



## MILTON PARISH COUNCIL

# CHAIRMAN'S ANNUAL REPORT 2013/14

### HAIL AND FAREWELL



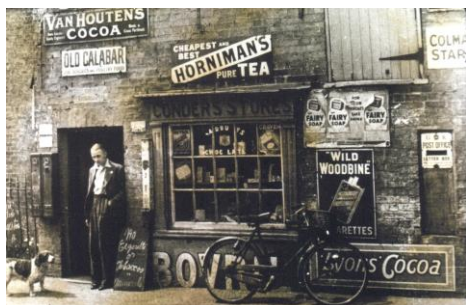
During the past year, we welcomed Anna Bradnam as a new parish councillor. Anna, who has lived in the village for many years, was co-opted onto the council at September's meeting. Alex Campbell and Gail Wynne-Jones have resigned from the council. I would like to thank Alex and Gail for all their hard work. We also have a new village clerk, Gemma Faulkner. Gemma joined us in February, and we wish her all the best in her new appointment. I would like to thank outgoing clerk Sue Humphreys for all her work on behalf of the council. Our assistant clerk, David Geasor, has also stepped down. I would like to thank David for his work over the past four years, particularly for the council's Land Group. His post has yet to be filled, and I urge anyone interested in the part-time position to contact the Clerk's Office.

### A WORD OF THANKS

Thanks to Milton Charities and the Community Centre Management Committee and staff for all their support during the year, and to Safer Neighbourhood Officer PCSO John Mason and village cleaner Philip Adams. Thanks to Milton resident Paul Capitain for his work in refurbishing the village sign and wooden seats by the war memorial, and to previous councillors Roger Day and Bob Waters for their work on tree issues in the parish. These are just some of the many individuals who contributed to the smooth running of the village during the past year. Your efforts are greatly appreciated!



### A STROLL DOWN MEMORY LANE



The grandson of Harold Easy, a former dairy farmer who lived in Butt Lane, has kindly provided the village with a whole host of old photographs of Milton. Parish councillor Jane Coston, former councillors Roger Day and Mark Ellwood, and Milton residents Graham Easy and Clive & Judy Milner (and numerous other older residents of the village) have spent the past year collating photos, putting

names to faces and identifying locations. The group's efforts have resulted in a fabulous collection of vintage photographs which offers a fascinating glimpse into Milton's past. The photos are available for viewing by appointment at the parish office. If you have any old photos of the village which you would like to add to the collection, please contact the Clerk's Office.



## ANNUAL PRECEPT

I'm happy to report that your parish council has voted to keep the village precept at the current level for 2014-15. Since our tax base has increased over the past year, this actually represents a *decrease* of 0.36% for a band D property in Milton. This is now the third year in a row that the precept has remained unchanged and we trust that this will help residents and families in the current economic climate.



## HELPING TO KEEP OUR VILLAGE CLEAN



The Milton Environmental Group won **FIRST PLACE** for Improving the Local Environment in this year's South Cambridgeshire District Council COMMUNITY PRIDE AWARDS. Congratulations to parish and district councillor Hazel Smith and her team! They work so hard throughout the year to ensure that our village looks its best and we are very grateful. Please consider joining them on one of their regular litter picks which are advertised on the parish notice boards. Hazel also continues dialogue with the Tesco store manager to deal with litter and other issues that come up through the year. Your Parish Council approved a dual recycling/litter bin to be placed beside the Tesco bus stop in an effort to increase the amount of waste recycled in the village.

## COMMUNITY CARE

Our Community Care warden Tracey Ebbon continues to do fantastic work with elderly residents in the village who want to maintain their independence and live in their own homes. This year, our Community Care Scheme received grants from Milton Charities and South Cambs District Council. I would also like to thank Vice-Chairman Ian May and the Community Care Committee for all their work on behalf of our elders in the village.



## YOUTH

The parish council continues to provide financial support to the youth club, and Milton Action for Youth (MA4Y) helps oversee youth work in the village. Thanks to parish councillor Ian Tyes and



MA4Y for their valuable work with the youth of the parish. Pupils from Milton Primary School gave a presentation to the parish council in March. Jodie, Megan, Noah and Joe spoke very eloquently and presented the school's survey results on ways to improve

Milton for children. Short and long term ideas were offered, including a water fountain at the Country Park, a swimming pool and a chocolate factory! A sub-committee was set up last Autumn to recommend future open space/ community facility projects, and the pupils' suggestions will be part of their deliberations.



## MILTON COMMUNITY CENTRE (MCC)



Why not make the most of this valuable resource which is right on our front doorstep by taking a class, joining a club or deciding to work off some extra pounds with the many sports activities available. You can also hire out the hall for special events. Remember, it is YOUR Community Centre, so why not use it? You can call MCC Manager Andy Gray on 862763 and view a timetable of activities at [www.miltonvillage.org.uk/mcc/](http://www.miltonvillage.org.uk/mcc/)

## NORTH LODGE PARK



The Bellway Homes sales office at the new North Lodge Park housing development is now open and the first family moved into the main site just this month. Villagers interested in the development should ring 862876 or visit [www.bellway.co.uk/new-homes/essex/north-lodge-park](http://www.bellway.co.uk/new-homes/essex/north-lodge-park) for more information. If Bellway can stick to the current timetable, the village should be receiving its new sports fields and pavilion in 2015.

## DEFIBRILLATOR DONATED TO THE VILLAGE

The East of England Ambulance NHS Trust has supplied the village with an automated external defibrillator as part of their Community Public Access Defibrillator (CPAD) project. Thompson Electrical very kindly agreed to install the apparatus for us free of charge as a service to the village. The defibrillator cabinet has been mounted on the wall of our Bowls Pavilion (opposite the surgery). The CPAD was launched on 26<sup>th</sup> February and is now ready for use. This is a terrific resource for our village. Many thanks to the East of England Ambulance NHS Trust and Thompson Electrical!



## WELCOME PACKS



The Clerk's Office has produced Welcome Packs for new residents, so if you know of anyone who has moved into the village recently please send them along to the Parish Office to pick one up. I also recommend that residents visit our parish council website ([www.miltonvillage.org.uk](http://www.miltonvillage.org.uk)) for more information about the village, including a virtual parish notice board with up-to-date local events.

## LOCAL ROAD IMPROVEMENTS

The public consultation on the A10/Landbeach Road junction held in September in the Community Centre was well attended. County Council staff present reported that lots of comments about the proposed layouts had been received. We look forward to working with the County Council to make this junction safer for drivers, cyclists and pedestrians. The Highways Agency gave a presentation to the council on the need for an A14 improvement scheme. Parish councillors had concerns about plans for the Milton junction as well as additional congestion during the improvement work. They also highlighted the need for improvements to the Girton junction. Details of the proposals can be found at: [www.highways.gov.uk/roads/road-projects/a14-cambridge-to-huntingdon-improvement-scheme/](http://www.highways.gov.uk/roads/road-projects/a14-cambridge-to-huntingdon-improvement-scheme/)



## YOUR PARISH COUNCIL NEEDS **YOU!**

Are you interested in what happens in Milton? Would you like to make it an even better place to live and work? If you've ever considered becoming a parish councillor, now is the time. We have three vacancies which need to be filled. Just a few hours a month is all that's required to make a significant contribution to village life. I urge you to consider joining us in our rewarding work and making your voice heard. For more information about being a parish councillor please see our website: [www.miltonvillage.org.uk/opus211.html](http://www.miltonvillage.org.uk/opus211.html). Or better yet, come along to a parish council meeting (dates and times advertised on the parish notice boards and website) or speak to one of our councillors and find out what they think of the job.

**Richard Summerfield**  
**Chairman, Milton Parish Council**

## ANNUAL RETURN – Statement of Accounts at 31 March 2014

	31-Mar-13	31-Mar-14	
<b>1 Balances B/F</b>	<b>205,525</b>	<b>220,750</b>	Total balances at beginning of year
<b>2 Annual Precept</b>	<b>125,000</b>	<b>125,000</b>	Total amount of precept received
<b>3 Total other receipts</b>	<b>29,734</b>	<b>32,976</b>	Total receipts or income less the precept
<b>4 Staff costs</b>	<b>44,167</b>	<b>40,544</b>	Total expenditure made to all council employees
<b>5 Loan interest/capital repayments</b>	<b>NIL</b>	<b>NIL</b>	Total payment of capital and interest
<b>6 Total other payments</b>	<b>98,542</b>	<b>70,823</b>	Total expenditure or payments
<b>7 Balances carried forward</b>	<b>217,550</b>	<b>267,359</b>	Total balances & reserves at end of year
<b>8 Total cash &amp; short term investments</b>	<b>226,810</b>	<b>273,286</b>	Sum of all bank accounts
<b>9 Total fixed assets &amp; long term assets</b>	<b>190,684</b>	<b>190,684</b>	Recorded book value of all assets
<b>10 Total borrowings</b>	<b>NIL</b>	<b>NIL</b>	Outstanding capital balance of all loans
<b>11 Trust Funds</b>	<b>No</b>	<b>No</b>	Council is responsible for managing trust funds

-----

### MILTON PARISH COUNCILLORS

Anna Bradnam	862364	<a href="mailto:anna.bradnam@btinternet.com">anna.bradnam@btinternet.com</a>
David Chamberlin	861511	<a href="mailto:rector@allsaintsmilton.org.uk">rector@allsaintsmilton.org.uk</a>
Jane Coston	c/o 861447	<a href="mailto:j.coston@ntlworld.com">j.coston@ntlworld.com</a>
Rob Farrington	860160	<a href="mailto:rob.farrington@btopenworld.com">rob.farrington@btopenworld.com</a>
Gary Heaney	690317	<a href="mailto:heanball@hotmail.com">heanball@hotmail.com</a>
Mark Hersom	07852 997771	<a href="mailto:mark.hersom@googlemail.com">mark.hersom@googlemail.com</a>
Ian May	521294	<a href="mailto:ian.may@ntlworld.com">ian.may@ntlworld.com</a>
Jim Mowatt	861024	<a href="mailto:jim@umor.co.uk">jim@umor.co.uk</a>
Michael Perkins	07769 665836	<a href="mailto:perkins_michael@yahoo.co.uk">perkins_michael@yahoo.co.uk</a>
Hazel Smith	860752	<a href="mailto:hazel.smith@miltonvillage.org.uk">hazel.smith@miltonvillage.org.uk</a>
Richard Summerfield	860715	<a href="mailto:richard@tsummerfield.freeserve.co.uk">richard@tsummerfield.freeserve.co.uk</a>
Ian Tyes	574394	<a href="mailto:bubblyian@gmail.com">bubblyian@gmail.com</a>

### DISTRICT COUNCILLORS

Mark Hersom	07852 997771	<a href="mailto:mark.hersom@googlemail.com">mark.hersom@googlemail.com</a>
Hazel Smith	860752	<a href="mailto:hazel.smith@miltonvillage.org.uk">hazel.smith@miltonvillage.org.uk</a>

### COUNTY COUNCILLOR

Maurice Leeke	441562	<a href="mailto:maurice16@ntlworld.com">maurice16@ntlworld.com</a>
---------------	--------	--

### Parish Office Opening Hours Monday - Thursday: 10am-12noon

If you wish to come to the Parish Office outside these opening hours, please contact us (Telephone 861447 or email: [clerk@miltonvillage.org.uk](mailto:clerk@miltonvillage.org.uk)) and we would be happy to make an appointment at a time convenient for you.

**Gemma Faulkner, Clerk to Milton Parish Council, April 2014**

Published by Milton Parish Council