

Village News Sheet

Delivered Free
Circulation 1,800

Merry Christmas
and a
Happy New Year

Winter Issue - December 1994

Issue 15

Milton School Association Quiz Night

Where were you on the evening of 14 October? Were you at home watching the television? Or were you down the pub? You could have been at Milton School, enjoying a drink and taking part in yet another Quiz evening!

Thirteen teams took part in another successful event, answering questions on History, Geography, Science, Showbiz, etc....

All enjoyed a ploughman's supper with gateau to follow. The winners just by a nose were a team made up of the Danns, Pullens & Scurlls, well done to them and all who took part. Make a date in your diaries for the next one - 31 March 1995, same time, same place.

Chris Cater



Christmas Tree Moves

How times change! A few years ago the area around the Post Office in Coles Road was considered to be a fairly central part of the village and since 1977 a Christmas tree was erected there every year by the Parish Council.

In 1978 the bypass was opened and the busy A10 trunk road which ran through the centre of the village moved to its present position. Suddenly the village began to expand and spread towards the new bypass, consequently the centre of the village appeared to move. The Parish Council felt that the whole village would benefit from the decorated tree if it similarly moved to a more central position. Therefore you will now see the large tree on the corner of High Street near the village sign decorated this year. The Parish Council has written to other local bodies suggesting they may also like to enter into the Christmas spirit and decorate their premises to make Christmas in Milton come alive.

J C

Mary Daniels Closes Up 50 Years As A Member Of Milton WI



Mary as she was presented with flowers, gifts and cards.

A wonderful evening was had by all at Mary's surprise party. Around fifty members attended the evening which started with a sherry reception. Celebrations then continued with a play 'Ill Fated' which everyone enjoyed and was followed with games of pass the parcel and 'Monologs'. Later lovely refreshments were served which included a wonderful cake made by one member and iced by another. The evening finished with a sing song and a member of the Badminton Club coming in from the adjoining hall to have a dance with Mary.

Wendy Stanley

All Saints "On Fire" Holiday Club

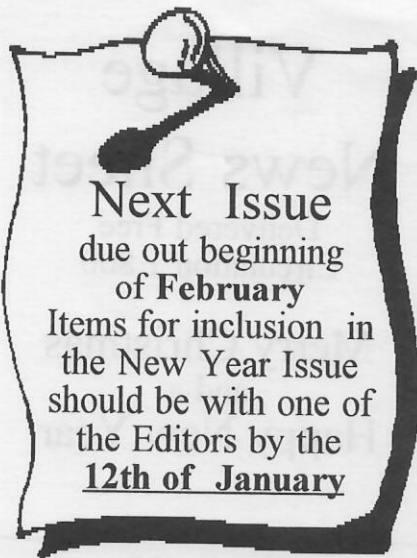
All Saints was 'On Fire' in half-term week when ninety excited youngsters between five and twelve years were there learning more about the Christian faith. The Daily Flame newspaper was produced after interviews with participants and articles on sport, and newsworthy activities were written by the oldest group. The paper was a sell out. There is also a video film showing highlights of the week planned and filmed by two groups of youngsters. Meanwhile the rest busied themselves

(continued on page 2)



Supported by Eastern Electricity
as part of their community investment programme

Powerful friends in the community



Please Note :
 We are happy to print your letters but please enclose your name and address even if you want to remain anonymous

(continued from front page) with salt dough 'flames', painting, singing and silly messy games as well as writing prayers and being led marching round the garden by the new rector. The week proved to be a great time for young and old culminating in a lively Sunday morning service.

On Monday, the LIGHT party livened up the hall again when 86 youngsters ate, sang and had great fun for one and a half hours. And still the Leaders want to do it all again next year!

R Trollope

Milton Playgroup Christmas Fayre

Milton Playgroup would like to thank the following for donating raffle prizes to their recent Christmas Fayre:-

- Tesco stores Ltd.
- Unicorn House/ Jaws Fish Bar
- G R Wallis & Sons
- Dillons Newsagents
- Masquerade
- Pizza Cottage
- The Lion & Lamb Public House
- The Jolly Brewers Public House
- Betty's Hair Stylist's
- Unwins Seeds Ltd.
- McDonalds Restaurants

Your support is very much appreciated. Many Thanks

Alternative Bonfire Night

On 5 November while everyone else was getting wet in the steady drizzle, a sensible group were enjoying excellent food in the warm atmosphere of the School Hall. This was the beginning of the Alternative Bonfire Night. Ian Cowley, our new Rector, and Michael Green (currently on tour around churches in the country) then answered a range of difficult questions such as "Does the Devil exist?", "Would Jesus approve of the Measles Vaccine?" "Why does God allow suffering?" and "What would Guy Fawkes blow up tonight?". Their question master, George Hubbard, commented that neither would make a good politician as they were too honest, ever admitting they didn't know the answer to one question.

The evening concluded with a short presentation by Michael Green on "The Biggest Explosion". This was punctuated by some well timed bangs, which I am assured were not pre-arranged! This included the interesting information that Guy Fawkes was baptised at St Michael Le Belfrey, York, a church which has burst into life over the last twenty years. A short sketch served to illustrate the most important question of the evening "Jesus is knocking at the door of your life - will you let HIM in!!?"

Jonathan Strickland

LETTERS TO THE EDITOR

Dear Parishioners

On 8 October 94, Councillor Coston and myself held a Joint Surgery at Milton Primary School.

The idea being that people could call in, on a drop in basis, and chat about any problems they may have that either the County Council or the Police could help with. Also available at the surgery are a comprehensive range of information leaflets covering just about every aspect of crime/accident prevention imaginable.

The surgery was advertised on local radio, local press, village magazine together with posters displayed round the village.

Despite this advertising not one person called in. Does this mean that everyone in Milton is completely happy with the service they receive from the County and the Police?

The date of the next surgery is January 21st from 11.30 am to 12.30 pm and will again be held in the village Primary School.

Please feel free to come along and discuss your problems or concerns, or contact Councillor Coston on 861655 or myself, Pc Gent on 232222. If there continues to be no requirement for this service, surgeries will consequently be cancelled.

Dave Gent Pc 149

Milton Gang Show 1995

"It's great to be young"

Milton Scout and Guide groups are proud to present "It's great to be young" from 23 to 25 February 1995. The show will feature a cast of all ages from Rainbows and Beavers, through Cubs and Brownies and on to Scouts and Guides. It promises to be an evening of music and laughter not to be missed.

"It's great to be young" follows hot on the heels of "Meet the Gang", presented at the Community Centre in February 1993. This was such a success that a sequel was planned immediately after.

The cast will start rehearsing soon after Christmas; learning the words to songs and sketches and perfecting their parts ready for the first night. It's hard work but, as everyone involved last time will tell you, well worth it. A lot of fun was had by all in 1993.

A team of adults will transform the Community Centre into Milton's answer to the London Palladium; staging lights, sound, costumes and scenery all add to the performance.

The real stars are the children give them your support and come along to see the show. They'll prove to you "It's great to be young".

Tickets will be on sale early in the New Year.

Chris Ward,

10 Butt Lane, Milton Tel: 441169

New Year's Eve Party

Cottenham Sports & Social Club

Disco - Ploughmans Supper - Raffle
 7.00pm - 1.00am

(Happy Hour 7.30pm - 8.30pm)

Tickets £5.00 each

Over 18's only

Admission by ticket only

Contact: Janette Tel. (0223) 862886

Betty's

Uni-Sex Hairdresser
 49 Cambridge Road
 Tel. 420526

FLORIES

BRIDAL FLOWERS

Fresh, dried & silk bouquets etc.

Let me design your wedding personally

Fully qualified florist for 22 years

Phone Daryl 862093/420720

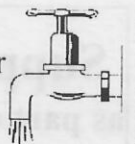
M J POTTS HEATING & PLUMBING SERVICES

10 Lander Close
 Tel: 0223 440795

All Installations/Repairs.
 undertaken

Approved CORGI Gas
 & TOTAL OIL Installer

Work Guaranteed
 FREE ESTIMATES



Milton Country Park

All events/activities start from the Visitor Centre. Please wear suitable clothing.

A charge is made for the childrens WATCH activities. For further information contact the Ranger - Malcolm Busby on (0223) 440196

January

Sunday 15th

Reed Bed Work

Clearing scrub to encourage the spread of reeds.

Wednesday 18th

WATCH - Torchlit Walk

Bring your torch for a walk with a difference, the walk will be followed by soup for supper. Booking essential. 6.30-8.00pm. Charge £1.00.

February

Saturday 4th

WATCH - Picture this, Wildlife Mural

A new year and our mural boards need a new look, come and help us. 2.00-3.30pm.



Milton Hospice

Carols with the Salvation Army

Dec. 7th at 8pm.
Church Hall

Milton Playgroup

Bingo Night.

Wednesday 7th Dec. 1994

Eyes down and looking 7.45pm. for 8.00pm.

Community Centre Annexe.

Fun for all.

Bring the family for this

CHRISTMAS SPECIAL

Prizes galore and raffle.

Refreshments available and complimentary glass of wine with your tickets.

For our senior Members, remember if you need a lift or escort home we will provide it

SEE YOU THERE.

IMPACT

- Future Events to be held at
Impington Village College

9 April 1995 - Craft Fair
21 May 1995 - Fun Run

Roller Skating

Thursday evenings
5.30 - 6.30pm.
At Milton
Community
Centre

Milton School Association

60/70's Disco

on

Saturday, 21 January 1995

8 pm To Midnight
at

Milton Community Centre
Dancing To Coast To Coast
Roadshow

Tickets £5.50 Including Supper
£3.50 Admission Only

Dress: Beach Wear (optional)

For Tickets Contact:

Lynda Tel: 862093

or Milton School 860279

Tickets On Sale Now.

VILLAGE FAYRE '95

Would you like to have a say in what we do for next years Village Fayre?

The first meeting of the Organising Committee is to be held on

Monday, 16 January 1995
in the office of Edmund House
at 8.00 pm.

Please come along and represent your village organisation or just yourself! Good company, coffee and biscuits the more the merrier.

Chris Hallworth

Secretary to the 1994 Organising Committee

Whist Drives

These continue to be very popular especially when we find out that someone has an 80th birthday which has happened at the last two, and we were able to surprise them. At the end of this year we shall have completed fourteen years of monthly whist drives.

The Christmas Whist Drive will be held on the third Tuesday of December, when we hope to have all the traditional Christmas fare for prizes.

Mary Daniels

Enterprise Club

Members of the Enterprise Club have several events to look forward to in the coming weeks.

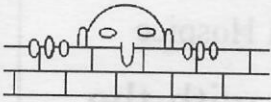
On Saturday, 3 December we will be going to Ely to see 'The Wizard of Oz' at the Maltings, and will be having our annual Christmas Party on Tuesday, 6 December in the Church Hall.

To start off the New Year with a flourish we have booked to see the Pantomime 'Cinderella' at the Corn Exchange on 4 January.

We look forward to joining all our friends at our fortnightly meetings in 1995 and wish you all a very Happy Christmas and Prosperous New Year.

Iris & Fred Chilton

Wot!!! No New Years Eve Dance organised on behalf of the Community Centre



Please do not phone Mick or Julie Gray for tickets.

The good news however is :-
The New Years Eve Dance will again be organised on behalf of the Community Centre (1995-96) and will be a joint effort by the Milton Cricket and Football Clubs. Watch this space in future issues of the Village View.
(Editors Note)

Thank You Milton

CAMSIGHT would like to thank the residents of Milton for their generosity and, in particular, the very kind people who collected on our behalf between 19 September and 1 October. The village raised over £75.00 towards helping blind and partially sighted people in the county. We are most grateful for this contribution to our funds.



The little shop on the corner of Fen Road and High Street.

Little Shop Of Milton

I suppose I could be called an old stick in the mud or someone in a rut. But, being one of those people who does not take kindly to change until gradually it grows on you.

Ever since I can remember there has been a little shop on the corner of the road which leads to Fen Road. First, it was a little Sweet Shop run by a Mrs Johnson, then by three Lander Sisters in turn, after that it was a butcher, then finally a bakers, before being turned into an office. In less than a week, it has been completely stripped of everything, and I have lost one of my advertising venues for Scrabble, Whist Drives, and a nice little place for a gossip!

Oh well, changes are inevitable I suppose, and must be accepted.

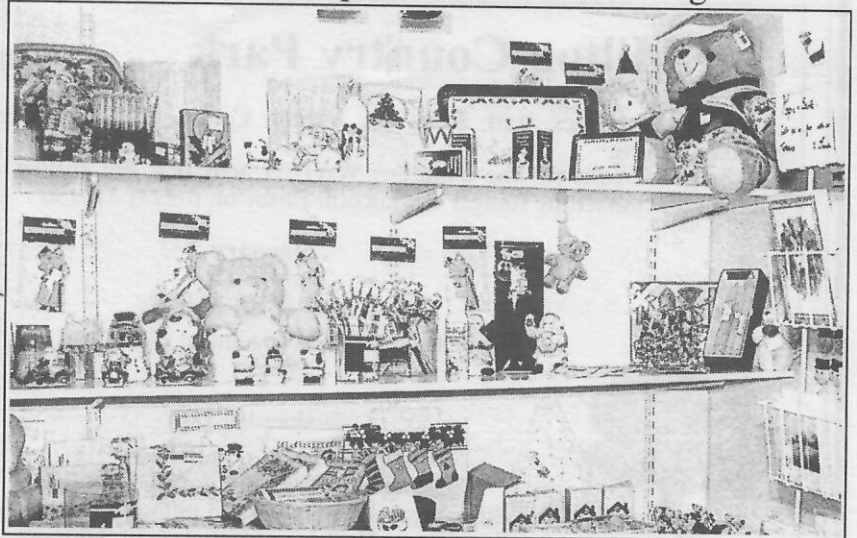
Mary Daniels

Contributions for our news sheet are always welcome.
Please try to keep within 100 words and no more than 200.
Thank you for your support. JC

Holiday Bungalow ORLANDO FLORIDA

Own heated pool, 3 beds, sleeps six
25 mins Disney Theme Parks
Photos & Video available
Tel. 441403 (Milton address)

Children's Hospice for the Eastern Region



Milton Hospice Shop with shelves piled high with Christmas stock
Open weekdays 10am - 4pm, Saturday and Sundays 2 - 4pm
and will close for Christmas on Wednesday 21st December.

The shop is to be found in behind the Hospice itself which is off Church Lane.

Patron of the Friends of the Children's Hospice for the Eastern Region, Mrs Norma Major, who officially opened the sensory room in July, was one of many visitors at the hospice over a summer of celebrations to mark its fifth birthday.

At the beginning of December, the Hospice's bereaved families will hold a remembering service at the parish church, to mark the lives of their children. This service happened for the first time last year. So many families felt its value, that it will become a regular feature of the hospice diary.

The nature of the work at the hospice means that it can't have an "open door" to visitors but readers would be more than welcome at one of the regular open days on the first Wednesday of each month. Call (0223) 441221 for further details.

Slimmers Send Bra's To Bosnia

The members of the slimming club Slimming World held a sponsored slim and raised almost £200 for Milton Hospice. They are now collecting undergrown bras to send to needy women in Russia, Bosnia and Africa and would appreciate any donations of unwanted bra's.

Please make your donations during class times at Milton Primary School, Infant Hall, Humphries way, Milton: Wednesday evenings 6.15pm - 8.00pm & 8.00pm - 9.30pm. Members of the Milton group during the last year lost between them almost 38 stone.

Sally-anne Tel. 328490

Lunch Club

We have just completed the FIRST DECADE in the Church Hall. There are still some members attending that came to the first meal fifteen years ago. It has grown slightly since then, with more space we can accommodate double the numbers which at the start was about fifteen and now stands at thirty-two. We are always pleased to welcome new members. Regrettably as much as we would like to have couples we must limit it to folk living on their own which is what the original idea was.

THE PRIME TEAM

Painter & Decorator
Interior & Exterior
High Class Decorating
Free Estimates

R.P. Kent

Tel. 0223

860995



MILTON
WINDOWS

Quality costs no more

PVCu windows, doors, cladding & conservatories

Telephone 0223 440376

Organisations in Milton

Group	Contact	Tel. No	Day	Venue	Times
All Saints Church	Rev. Ian Cowley	-	-	-	-
Badminton	Roy Martin	420526	Tues	Com. Centre	7.30pm
Beavers	-	-	Mon	Annexe	6.00pm
Brownies	Daphne Norman	860917	Tues	Annexe	6.15pm
Bowls Indoor Carpet Bowls	Keith Wright	-	Mon & Thurs	Com. Centre	2.30pm
	-	-	Thurs	Com. Centre	7.00pm
Outdoor Bowls	G Sheen	-	-	Coles Rd. Rec.	-
Childminders Group	-	-	-	-	-
Country Park	Warden - M Busby	440196	-	-	-
Cricket	Chris Almond	440715	-	Sycamores Rec.	-
Cubs	-	-	-	CC & Annexe	-
Darts	Frazer Confrey	860314	-	-	-
Enterprise Club	Iris & Fred Chilton	862381	1st,3rd Tues	Church Hall	2.00pm - 4.30pm
Football Club	Frazer Confrey	860314	-	Sycamores Rec.	-
Friends of Milton Hospice	-	-	-	-	-
Guides	Sue Andrews	316801	Tues	Annexe	7.30pm - 9.00pm
	Claire Steel	440662	-	-	-
Kids Band	Laurence Wickens	-	Mon	Church Hall	5.45pm - 6.30pm
Lunch Club	Mary Daniels	420532	Thurs -(term)	Church Hall	12.30pm
Monday Club	George Hubbard	441573	Mon	Church Hall	6.30pm - 7.30pm
Milton Ladies Group	Elizabeth Moule	860298	3rd Fri	Church Hall	8.00pm
Milton Parish Council	Jim Daniels (Clerk)	861447	1st Mon	Com. Centre	7.30pm
Milton Primary School	Mr T Gillmore (Head)	860279	-	-	-
Milton School Association	-	-	-	-	-
Morris Dancers	Dave Jones	-	Mon	M Primary Sch.	8.00pm
Mother & Toddler	Liz Hubbard	441573	Mon Wed Fri	Church Hall	10.00am - 11.45am
Mothers Union	Sybil Carlton	860769	1st Tues	Church Hall	-
Music Appreciation Group	Tony Stubbings	860923	1st Fri	Church Hall	7.30pm
Music Group	Liz Onyett	860699	Mon	Church Hall	8.00pm
Netball Club	Melanie King	-	-	Coles Rd. Rec.	-
Over 60's Club	-	-	Tues (alt)	Com. Centre	-
Play Group	Carolyn Furniss	441045	Mon -Fri	Annexe	9.15am - 12.00pm
	Caroline Johnston	441376	-	-	& 1pm - 3.00pm
Rainbow Guides	D Norman	860917	Wed	Annexe	6.15pm
Scout Group (50th)	R Norman	860917	-	-	-
Scrabble	Mary Daniels	420532	4th Fri	Church Hall	7.30pm
Social Car Scheme	Stan Diddams	861564	-	-	-
Starting Blocks	Liz Hubbard	441573	4th Tues	Church Hall	2.00pm - 3.00pm
Tea & Chat	Sue Nunn	861747	Wed	Church Hall	2.00pm - 4.00pm
Tennis Club	Sue Griffin	860825	-	Coles Rd. Rec.	-
Tumble Tots	Sylvia West	263412	Tues & Wed	Com. Centre	12 T & 10 W
Toy Library	Jo Sollars	862529	1st & 3rd Thurs	Com. Centre	10.30am -12.00
Venture Scouts	-	-	-	-	-
Whist Drive	Mary Daniels	420532	4th Tues	Com. Centre	7.30pm
Womens Institute	Mary Daniels	420532	3rd Tues	Com. Centre	7.30pm
Youth Club	Andy Allen (I.V.C.)	232835	Mon (term)	Com. Centre	7.00pm

Please contact us with information or alterations to add to this list. Tel. Jane Coston 861655

IMPACT UPDATE

£98,000 still required. Work on pool commenced 1.10.94. First turf ceremony on 12.10.94 when Councillor Eustace Bullman of South Cambs DC dug first turf. Pool due for completion June 1994.

Comments are requested from swimmers/non-swimmers who require lessons as to opening times.

Bob Waters

(Editors Note:- We intend to publish a preliminary timetable in the next issue)

M.J. BLACK
Carpentry & Joinery
Fitted Kitchen Specialists
complete service from
Planning to Installation

Tel. 861205
1 Butt Lane

R B
Electrical

Your Milton
Domestic and
Industrial Specialists

Tel. 861869

Karen's Hair Studio
1a Coles Road, Milton

Mondays & Wednesdays - Senior
 Citizens Days - 20% reduction

Opening hours
 Monday / Tuesday 9am-5.30
 Wednesday / Thursday 9am-6.00
 Friday 9am-7.00 Saturday 9am-5.00

Tel:(0223) 440198
Easy Parking

Birthdays

Mick

You went wild in your teens
You roared through the roaring
twenties
You had fun in your flirty thirties
Now welcome to the naughty forties.
Happy Birthday Mick for 1 January
1995
Lyn, Steve & Laura

Mick

You're still out in front, but I'm
following close behind, 55 was a
Vintage Year, Cheers Mick have a
happy birthday on 1 January 1995.
Love Daryl, David, Johanne &
Edward

Edward

Happy 16th Birthday for 24
November
Hope you have lots more fun sailing,
Good Luck for your exams. Love
Mum, Dad and Johanne

Johanne

Happy 19th Birthday on 31 December
Good Luck for your career in the
army, keep your head well down!
We'll miss you lots, love Mum, Dad
and Edward

Notice

Milton Village View is unable to
check or verify the warranty's
authenticity of or representations made
by their advertisers and must therefore
exclude liability howsoever arising
from any advertisements in this
newspaper. Nor do any statements
necessarily accord with the opinions or
beliefs of the Editors, Milton Parish
Council or Milton Village View.

Lizzies Workout raises

£108.00 for Milton Hospice

Thanks to all who helped to raise
this. Particular thanks go to
Masquerade who donated some gift
vouchers, also thanks to all those who
helped and donated prizes. Liz Ward,
herself, donated Sports Shoes worth
£60.00. Well done to all.

Lizzie's Step Workout

Milton Primary School

Monday's & Wednesday's
7.00-8.00 pm / 8.00-9.00 pm

Milton Community Centre Annexe

Sunday 10.30am

Tel. Liz Ward (0223) 512818

MASQUERADE

Hair & Beauty Salon

6 High Street, Milton, Cambs.

Tel. (0223) 863636

For all hair & beauty treatments

New Doctors Surgery For Milton?

Milton Parish Council are currently
discussing with the doctors in the
village the possibility of building a new
surgery on the corner of Coles Road
next to the Community Centre.

30 November 1954

*It was reported that Dr. Hartley of
Waterbeach had made arrangements
for his assistant, Dr. H B Whitmore, to
hold a surgery at Byhill Close, Fen
Road, on Monday and Thursday
mornings. - Research M Spooner*

The Community Lifeline Service For The Elderly And Disabled

Provides reassurance and peace of
mind to elderly and disabled persons,
and their relatives and carers, by
allowing help to be summoned quickly
at the touch of a button via a specific
lifeline telephone. Cover is provided 24
hours a day and is available to
residents of South Cambridgeshire for
less than £3.00 per week.

For further information, please
contact: Mr John Tremlett -
Community Lifelines Officer on
Cambridge (0223) 351795, ext. 334.

The Community Lifeline is a non-
profit making service provided by
South Cambridgeshire District Council.

Dog Bye-laws

SCDC intend revising the dog bye-
laws. If agreed the new laws will
make it an offence if dog owners do
not pick up dog faeces from paths and
highway verges. As long as the faeces
is double wrapped you will be able to
put it in your refuse sacks.

The Parish Council employs someone
to clear up litter and empty bins on the
recreation grounds. If you put dog
faeces in these bins please make sure
that it is well wrapped.

Thank You

Jim Daniels

(Clerk to the Parish Council)

Allotments For Rent

Contact Jim Daniels
Clerk to the Parish Council
Tel. 861447

IGM BUILDING SERVICES

EXTENSIONS ALTERATIONS
HOME IMPROVEMENTS
WALLS, PATIOS & FIREPLACES

FREE ESTIMATES
& ADVICE

MILTON
CAMBRIDGE
TEL. 440126

IAN G MARNOCH

Public Notices

Sunday Opening

Milton Community Centre

At a meeting of the Milton
Community Centre Management
Committee on 4th May it was
proposed that the Community
Centre be made available for hire
on Sundays. To ascertain the level
of demand for this facility it was
decided to ask the residents of
Milton for their response to the
opening of the Milton Community
Centre on a Sunday and to identify
the type of activities that you, the
villagers, would be interested in
using the Community Centre for on
that day.

All comments and suggestions
should be sent to the Secretary,
Milton Community Centre

Mobile Library

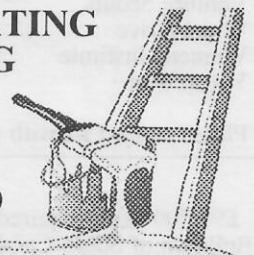
Cambridge East Area - Timetable
Community Centre - 2.45 - 4.00 pm
17 Nov, 1 Dec and 15 Dec
Post-Office - 9.15 - 9.45 pm
24 Nov, 8 Dec and 22 Dec
High Street - 9.50 am - 10.15 pm
24 Nov, 8 Dec and 22 Dec

Cambridgeshire County Council County Council Budget 1995/96

Public Consultations

Wednesday 18th January 1995
7.30p.m. Shire Hall, Cambridge.

PAINTING DECORATING GLAZING



Mobile
0860 453533
(local resident)

B.J. LEONARD

HOWARDS WAY

- * Your local Instructor
- * Excellent Pass Rate
- * Free Pick Up
- * Novice to Test
- * Extensive Motorway Tuition
Available
- * Discounts Available

TEL. Cambridge
(0223) 862501

DOT.ADL\CAADI.DIA.
193 The Rowans, Milton, Cambridge.

Puzzle Corner

LAST MONTH'S COMPETITION

There were many entries for the puzzle in Issue 14 - but there was not an all correct entry. The two winners with the highest scores were

Betty Askew of Willow Crescent and Pat Froment of Bene't Close. Congratulations to you both - a prize to celebrate your success is on its way. The prizes for this competition were kindly given by **R B ELECTRICALS** of The Rowans, Milton.

The answers to the puzzles are:

01 OUT (PUT) DOWN	16 DARK (HORSE) DOCTOR
02 QUICK (STEP) UP	17 MORNING (GLORY) HOLE
03 BOOT (BLACK) HOLE	18 SILVER (FOX) GLOVE
04 MAIL (ORDER) BOOK	19 GOLD (BRICK) BAT
05 COFFEE (TABLE) MOUNTAIN	20 PLATINUM (BLONDE)
06 LAST (POST) OFFICE	BOMBSHELL
07 LONELY (HEARTS) EASE	21 MINOR (KEY) RING
08 SHOP (WINDOW) SHOPPING	22 MAJOR (ROAD) BLOCK
09 OUTWARD (BOUND) OVER	23 OLD (SALT) MINE
10 LUCKY (STRIKE) OFF	24 ZIP (CODE) NAME
11 GATE (LEG) ROOM	25 JACK (POT) LUCK
12 COAL (MERCHANT) BANK	26 KING (PIN) UP
13 BICYCLE (CLIP) BOARD	27 HEAVY (WATER) FALL
14 CLOSE (KNIT) WEAR	28 LOW (SUNDAY) BEST
15 BLOW (DRY) CLEAN	29 RED (BRICK) WALL
	30 DRESS (COAT) HANGER

THIS MONTHS PUZZLE

ANAGRAMS

The puzzle this issue, is to unscramble the anagrams below. All the answers have a seasonal flavour, and may consist of one, or two or three words - except the last, which is five words.

You should send your answers to M J Spooner, 43a Old School Lane, Milton by 7th January 1995. There will again be prizes for the first two entries drawn out of the hat. **Karen's Hair Studio** of Coles Road, Milton has kindly donated a prize of a cut and blow dry also there will be a Village View prize of a voucher.

1 ACTOR SIDE ON	9 YOU STAR TREK
2 TAN IT IVY	10 YOU GELL
3 ALAS SUN ACTS	11 DID SMITH SCRAP GUN
4 STOLE TIME	12 ICES PIN ME
5 DELLS A HANGER	13 SEA TRIP
6 THE SIN WERE ME	14 SID CHARMS ME
7 MAPS IS THY PARCH	15 SERPENTS
8 CAR RIGS LESSON	16 ORDERS CALL ME MASTER HARDY SIR

Village Poet Wins 2nd Prize in Competition

Peter Howard who won £500 in the Canterbury Festival has recently had a collection of poems published by Envoi Poets Publications. The book is called *Low Probability of Racoons* and is priced at £3.95 and is available through him. He has kindly offered this poem for publication.

When I was young, the world was divided:

Big people knew all the answers
And could use electric drills.
Little people didn't
And couldn't.

As I grew older, there were fewer big people
(Or my criteria grew more stringent)
The number of little people
Grew larger.

Today, I drilled a hole in the wall
With my very own electric drill:
But I had to stand on a chair
To reach.

Peter Howard,
12 Butcher Close, Milton Tel. 440937

SHOTOKAN KARATE

At The St. Andrews Community School
North Cambridge

- * Caters for both adults and children
- * Modest club training fees
- * Experienced black belt instructors
- * Monday & Wednesday sessions
- * Personal accident/third party insurance

For further information contact the
Secretary Helen Johnson (0223) 834741

Crabbit Old Woman

What do you see, nurses, what do you see?
What are you thinking when you look at me?
A crabbit old woman, not very wise,
Uncertain of habits with faraway eyes.
Who dribbles her food and makes no reply
When you say in a loud voice, 'I do wish you'd try!'
Who seems not to notice the things that you do
And forever is losing a stocking or shoe.
Who, unresisting or not, lets you do as you will,
With bathing and feeding the long day to fill.
Is that what you're thinking? Is that what you see?
Then open your eyes, you're not looking at me.
I'll tell you who I am as I sit so still,
As I move at your bidding, as I eat at your will.
I'm a small child of ten, with a father and mother,
Brothers and sisters who love one another.
A young girl of sixteen with wings on her feet,
Dreaming that soon a lover she'll meet.
A bride soon at twenty, my heart gives a leap.
Remembering the vows that I promise to keep.
At twenty-five now I have young of my own,
Who need me to build a secure happy home.
A woman of thirty, my young now grow fast,
Bound to each other with ties that should last.
At forty my young will now soon be gone,
But my man stays beside me to see I don't mourn.
At fifty, once more babies play round my knee.
Again we know children, my loved one and me.
Dark days are upon me, my husband is dead,
I look to the future, I shudder with dread.
For my young are all busy with young of their own.
And I think of the years and the love I have known.
I'm an old woman now and nature is cruel,
'Tis her jest to make old age look like a fool.
The body it crumbles, grace and vigour depart,
And now there's a stone where I once had a heart.
But inside this old carcass, a young girl still dwells.
And now and again my battered heart swells.
I remember the joys, I remember the pain,
And I'm loving and living life over again.
I think of the years, all too few - gone too fast,
I accept the stark fact that nothing can last.
Do open your eyes nurse, open and see,
Not a crabbit old woman - look closer - see me.

This poem was found in a locker when nurses were turning out an old lady's possessions after she died in a geriatric hospital. She was unable to communicate but the poem had been written by her. Everyone was under the impression she was senile.

Sent in by Mike Geldart of The Rowans

Editors Note: Crabbit - probably a derivative of "Crabby" - "bad tempered".

Remembrance Sunday

On Remembrance Sunday, those of us who are old enough looked back to the days of the Second World War and remembered our friends and relatives who were killed and maimed in the fighting, the nights we spent in air-raid shelters during the Blitz, the long separations from our loved ones when they were in the armed forces and the children who were evacuated from the cities to strange homes and surroundings. All days of terror, sadness and a longing for peace.

As we grow old, the memories fade and become less painful, but let us never forget those days and hope and pray it never happens again.

Iris Chilton



Can You Identify These Footballers?

We are pleased to reproduce this photograph of Milton Football Team 1905-1906. Please contact the 'Village View' if you can identify any or all of the players.
Photo supplied by Roger Day.

Harry Captain

Milton Morris Men

Our Summer season was rounded off with a Guinness tasting evening at Hildersham (we tasted quite a lot!), a visit to deepest Norfolk at the invitation of the King's Men of King's Lynn and a charity dance out for the Sue Ryder foundation. We had a very good season this year visiting new venues and making new friends (some even bought us a drink).

Now we are well into our practice season preparing new dances for next summer. Many Morris dances were collected from the Cotswold area of England in the early 1900's. Cotswold village teams all had their own distinctive styles and these were written down and put together in a book which is used by the majority of modern Morris teams. For the past few years Milton Men have performed dances from the village of Sherbourne in Gloucestershire. Next year we are ringing the changes and will be performing dances collected from the village of Bledington in Oxfordshire. This means quite a challenge for our practice sessions but is keeping us on our toes (so to speak!).

Practice sessions are held at Milton Primary School from 8 pm on Monday evenings. We are all beginners this winter so why not come and be a beginner with us.

NB: We will be dancing around the village pubs as usual on Twelfth Night so watch out for us.

David Jones

Grafham Water Sailing Club

As a Milton resident and the Captain of the Fast Catamaran Fleet at Grafham Water Sailing Club in Huntingdon, I would like to tell you all about the Grafham Water Sailing Club and the excitement and fun which we get from sailing catamarans.

The Club is one of the largest in the country with over 150 catamarans on the water and one of the largest lakes in the country. We have an excellent clubhouse, first class catering facilities and racing during the year on Sundays and also on Wednesday evenings in the summer.

Whether you would like to try "messing about on boats" or experience the thrill of racing please contact me for more information.

Paul Storer Tel: 440209

Cambridge Regional College - College Hall Sports Complex

Our College Hall Sports complex is at our new premises in Kings Hedges in the north of Cambridge. Situated 5 minutes from the A45, and 10 minutes from the City centre, this facility provides easy access and plenty of free parking.

The facility can accommodate all ages, all levels of ability, and sports including Badminton, Basketball, 5-a-Side Football, Hockey Squash, Short Tennis, Volleyball, and our Fitness Suite. Regular early evening classes such as Step Aerobics, Cardio Funk, and Circuit Training are also a feature of our termly programmes.

The College Hall Sports complex is a relaxed, friendly, and safe environment which can provide recreational and supervised activities for the whole community.

For further information, either call in or telephone Ian Blake, College Hall Supervisor, Cambridge Regional College, Kings Hedges Road, Cambridge (0223) 418280.

BENET GARAGE

M.O.T TEST CENTRE

All Repairs and Servicing to any make of vehicle

Lubricare 2
Lubrication Service
Oil & Filter change
All Fluid levels topped up
Plus

"Health Check" and written report.

£38.95 + VAT

Price inclusive of parts & labour

Tel. 420380

lubricare 1 £16.95 + VAT
Engine Oil & Filter Change
(price includes labour)

Full Air Conditioning service available

Calor Gas & Lucas Electrical Stockists

Paraffin & Diesel

Thanks to all our customers for their continued SUPPORT

BOSCH

Service Agent for Cambridge
For Fuel Injection and Electronic Ignition Service

Lubricare 3 Major Service
Lubricare 2 - "Plus"

Engine tune up; New spark plugs;
New contact points; timing; OHV
Tappets; Carburettor Adjustments;
New air filter & Road Test.

£69.95 + VAT

Price inclusive of parts & labour

Printed by Cambridge Evening News, 51 Newmarket Rd, Cambridge.
Designed and published by Jane Coston, 67 Coles Road Milton Tel. 861655
Editors - Michael Spooner, Iris Chilton, Harry Captain, Kim Potts