

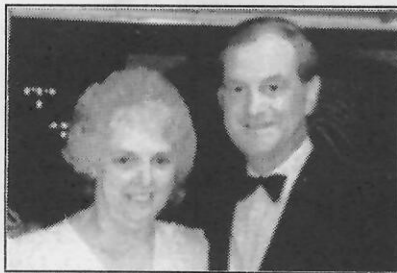
Village News Sheet

Delivered Free
Circulation 1,800

See page 7 for new competition

New Year Issue - February 1995

Issue 16



Daphne and Bill Wiltshire

Post Office Shock

Milton Post Office was robbed this month and one of the owners, Mr Wiltshire, was attacked. The incident happened on Tuesday 10th January soon after 5pm and police are asking for anyone with information to contact them. It has been reported that a substantial amount of cash was taken and the robbers escaped in a red Ford Escort. The getaway car had been stolen from Milton Tesco's car park and was later found abandoned on the old A10 near Eastern Electricity's offices.

Bill and Daphne who re-opened the shop on the Thursday after damage repairs said that they were overwhelmed by the flowers, cards and kind thoughts they had received and would like through the pages of this magazine, to thank the village for their support.

Anyone with information should contact the police on 01223 358966.

JC

10p Post Delivers 1800 Christmas Cards

Over the Christmas period, villagers of Milton were once again treated to a special deal by the Milton Venture Scout Unit. Stamps for posting Christmas Cards within the village were produced and local shops helped by acting as collection points. Approximately six Venture Scouts and their leaders, Tony Arnold and Clive Milner, were heavily involved over the two weeks the scheme ran which gave next day delivery every day with the exception of remote areas.

Each year the group contact the main Post Office and ask for permission to run the scheme and permission is given on the basis that the post within the village would not affect them.

"Many people have appreciated the scheme," said Clive Milner, "especially some of the elderly who find it hard to deliver their cards in bad weather. We did however have difficulty in delivering some cards as some of the addresses turned out to be non-existent and a little detective work had to be done".

The Venture Scout Unit wish to thank everyone who supported the Christmas postal service and a special thanks to Margaret Taylor at the Milton Wool Shop and all the staff at Dillons.

Coincidence?

One happy ending is that the Village View were given some envelopes which contained names but no addresses to publish in this magazine in the hope someone would recognise the writing, but one of our editors recognized one of the cards was for him and from that we have been able to contact the senders and return the other card.



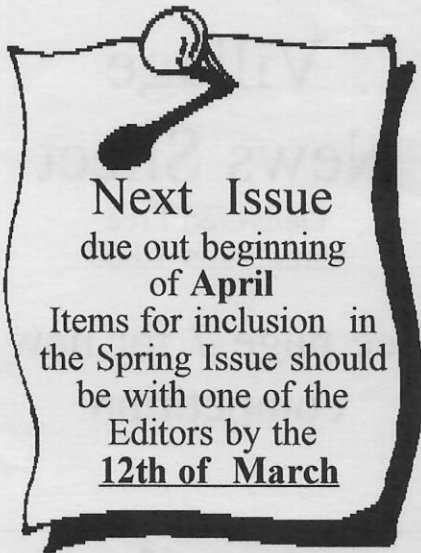
Sorting cards for delivery
Adam and Tim supervised by Assistant Venture Scout Leader, Clive Milner.

Jane Coston



Supporting the community





Milton Primary School
Humphries Way

LETTERS TO THE EDITOR

On Thursday 24th November Milton Primary School held Their Christmas Fayre. There were lots of stalls and Santa's Grotto. there was a Tombola, Lucky Dip, Toy stall and Children's stall and wine bottle stall. There was also Face painting and many others. We paid at the doorway. Lots of the classes made something for the Fayre.

It was a great success and all the effort made a grand total of £994.00 and we sent a donation to Children in need.

Clair Hickling (age 8)

Who Are These Children?

Seen on a fairly frequent basis, small groups of youngsters, between eleven and fourteen years of age, with school satchels on their backs, their heads enveloped in plumes of smoke, making their way via the Coles Road entrance to the Country Park some ten minutes before the school bus leaves Milton in the morning.

"Concerned"

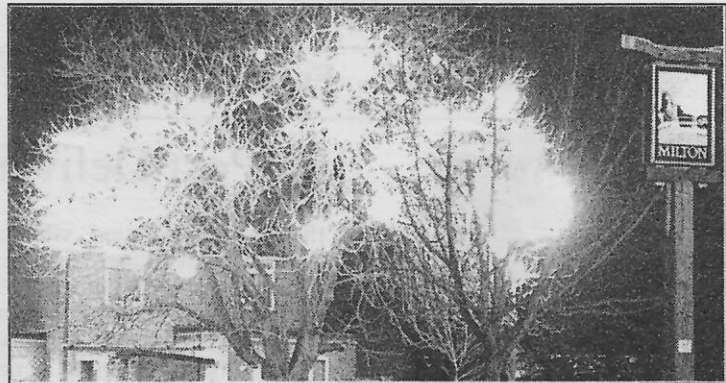
V.E. Day

This year, commemorative celebrations will be taking place between 6th May and 8th May as it will be the 50th anniversary of the cessation of World War II in Europe.

On Saturday 6th; a V.E. dance is to be held in the Community Centre. The organisers are keen to project the atmosphere correctly and would like to hear from 'Village View' readers who remember the original celebrations.

If you were there, do you have any photos? Can you remember what you were wearing? What was the celebration drink and how much did it cost? What music did you dance to and what kind of foods were prepared for the street parties? Do you still have a ration book?

If you can help with these questions or you would like to relate your memories of the time, please contact Ian Davis on Tel. No. 862463.



Christmas lights display in their new position in the High Street.

Whist Drive

Strange things happen at Christmas Whist Drives. The last two years the top prize of a Christmas cake was won by Jim Daniels. Last December it was won by Mary Daniels, who felt she had seen enough of Cakes so she swapped it for the cockerel with Doris Jennings. It was a very enjoyable evening with eleven tables in play. There were many prizes all with a festive air. Remember these are always on the fourth Tuesday.

Mary Daniels

Milton Day Care Centre

We ended 1994 with a Christmas lunch and 'in house entertainment' by the helpers (not guaranteed to win any Oscars!!)

Various activities were held during the year including talks from the police, fire brigade and the country park ranger. A stall at the village fair proved most successful, selling items made by members.

A trip to Hunstanton in June coincided with the the 90th birthday of Mrs. Hilda Day - the birthday cake travelled quite well considering the hot weather.

A coffee morning/bring and buy was held in November, many thanks to those who supported this, proceeds of which will go towards providing foot stools for the comfort of our members.

Children from Milton school have maintained a close link with the day centre, entertaining us with songs, carols and helping with games afternoons.

The day centre offers a day out for those who are frail, alone, housebound or needful of company. We offer company, entertainment, home cooking and a chance to have a chat with other villagers.

The committee would like to thank the Milton Community Centre Management Committee for all their help in providing facilities for the day centre, and above all the volunteers who help us run on a week to week basis. However - MORE HELPERS WOULD BE WELCOME . If you can spare a few hours weekly, fortnightly or monthly, to keep the day centre going, please ring Margaret Sandford on 862844. you will find it most rewarding.

**PAINTING
DECORATING
GLAZING**

Mobile
0860 453533
(local resident)

B.J. LEONARD

+++++
+
+ **Betty's** +
+ *Uni-Sex Hairdresser* +
+ 49 Cambridge Road +
+ Tel. 420526 +
+++++

✿ **FLORIES** ✿
✿ **BRIDAL FLOWERS** ✿
✿ Fresh, dried & silk bouquets etc. ✿
✿ Let me design your wedding personally ✿
✿ Fully qualified florist for 22 years ✿
✿ Phone Daryl 862093/420720 ✿

**M J POTTS
HEATING & PLUMBING
SERVICES**
10 Lander Close
Tel: 0223 440795

All Installations/Repairs
undertaken
Approved CORGI Gas
& TOTAL OIL Installer
Work Guaranteed
FREE ESTIMATES

50th Cambridge Scout Group
**MAMMOTH JUMBLE
 SALE**

Milton Community Centre
 18th March
 2.30pm

Admission 20p

House to House collections for Milton Village only, will take place on the evenings of 15th 16th & 17th March or leave at: 8 Hall End or 12 Faulkner Close or Tel. 861361

Milton Tennis Club
**ANNUAL
 GENERAL
 MEETING**

to be held on
**MON 20th MARCH
 AT 8 PM**



In The Bowls Pavilion
 Coles Road Recreation
 Ground
ALL WELCOME

50th Cambridge Scout Group

**Valentine's
 Dance**

11th February 1995
 8.00pm - Midnight

at
 Milton Community Centre
 Coles Road

**Dancing to live band
 FREE STYLE**

Tickets £6.00
 Including hot supper
 Licensed Bar
 Tel. 861361 or 861747

IMPACT

Future Events to be held at
 Impington Village College
 9 April
 Craft Fair

21 May
 Fun Run

Milton Community Centre
 23rd, 24th and 25th February 1995 7.15pm

DOORS OPEN 6.45pm

**It's Great To Be Young
 Gang Show**

An evening of music and laughter
 presented by

**The Guides & Scouts
 of Milton**

Tickets	Thurs:	Fri/Sat
Adults	£3.00	£3.50
Children/ Senior Citizens	£2.00	£2.50

Available from: Mrs L Twinn Tel. 861361 and
 "THE WOOL SHOP" Coles Road, Milton.

Block Bookings:
 Buy 9 tickets, any night, and the 10th ticket is free.

Milton School Association

**QUIZ
 NIGHT**

at
 Milton Primary School
 on
Friday 31st March 1995
 7pm for 7.30pm start

Licensed Bar

Tickets: £3 including
 Ploughman's Supper
 Phone Chris Cater Tel: 861413

*Questions are a team effort on
 an answer sheet.*

17 - 23 May 1995
 School Days only -
 Scholastic Book Fair

7 July 1995
 Annual Barbecue

Milton Country Park

All events/activities start from the Visitor Centre. Please wear suitable clothing.

A charge is made for the children's WATCH activities. For further information contact the Ranger -

Malcolm Busby on (0223) 440196

FEBRUARY

Saturday 4th
WATCH

Picture this, Wildlife Mural
 A new year and our mural boards need a new look, come and help us.
 2.00-3.30 pm.

Sunday 19th
Glade Opening

Removing unwanted scrub from areas to create sunspots for invertebrates.

MARCH

Saturday 4th
WATCH

Treasure Hunt
 A popular activity, answer the wildlife questions and claim your reward.
 2.00 - 3.30 pm.

Sunday 5th
Identi Tree

A look at trees coming into leaf around the park 2.00pm.

Sunday 19th
Reed Bed Work

More scrub clearance to encourage reeds to spread.

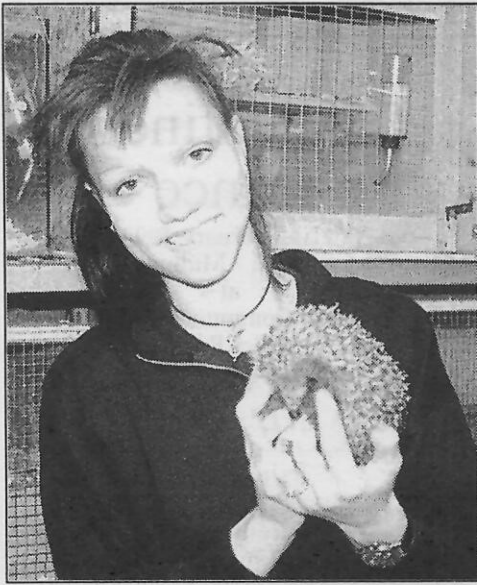
Milton Cricket Club

CEILIDH

"JUST THE WORMS"
 on
Saturday, 25 March
 8 pm to Midnight

at
 MILTON COMMUNITY
 CENTRE
 Licensed Bar

Tickets £5 from Chris Almond,
 12 David Bull Way Tel: 440715



Emma Horrod pictured here with a rescued hedgehog

Hamstede Animal Refuge - Milton

It all started 5 years ago when the first 'rescued' animals were acquired. These were 15 laboratory rabbits that were due to be put down. After making enquiries we managed to obtain permission to take all 15 rabbits home to the refuge. At the time we did not have housing for all the rabbits but fortunately we had a construction team on site ready to build hutches and runs - thanks to mum and dad.

Since then the refuge has received a large variety of animals, from barn owls and hedgehogs to ferrets and rats. The refuge is R.S.P.C.A. approved and take wildlife with the help and advice from the British Wildlife Rehabilitation Council.

It was a great relief when the Vet moved into the village, Peter Shenton and staff of Maple Cottage Veterinary Surgery, who have given the refuge continuous support, advice and encouragement.

Temporary and permanent accommodation is available for domestic pets, but not cats or dogs. Wild animals are only held until they are fit for release and include orphaned and injured creatures.

Short Cases

Domestic Pets

We have taken a variety of pets some of which have been rehomed. We have had rabbits from breeders who have no longer time to care for them. Young guinea pigs from owners who thought they had bought two females! Some pets come to the refuge because they are vicious and can not be handled.

We do arrange temporary homes and have 'baby sat' two guinea pigs for 18 months for one lady. These are but a few examples of the reason people use the refuge.

Wildlife

In the past week we have had some successful wildlife cases:-

About two and a half months ago a crow was brought to the refuge with quite severe feather damage and hence was unable to fly. We kept him in an aviary and fed him copious amounts of dog food, seed and soft bill food. After a successful moult and a new set of feathers we released him one Saturday morning. Saturday afternoon he came back asking for his dinner.

On the 21 October we received a phone call from a young girl who had found a hedgehog trapped in a net. The girl and her friend brought him to the refuge and we discovered on examination that the hedgehog was severely under weight for his size, dehydrated and suffering from hypothermia, indicating that it had been trapped in the net for several days.

A heat pad, hot water bottle and a fluffy towel cured the hypothermia and he gained a healthy appetite. Due to the onset of winter and the fact that he is under the recommended weight for hibernating, (600g.), he will be staying with the refuge until the spring.

The refuge will take domestic or wild animals but we do not have the facilities to take cats or dogs. There are plenty of local animals shelters who take such animals.

I would like to take this opportunity to thank everyone who has helped fund and support Hamstede Animal Refuge.

Emma Horrod
HAMSTEDE' Tel. 560495

Byelaws And Dogs

South Cambs. District Council are considering changing/have agreed to change the dog fouling bye-law from "no fouling" to "poop-scoop". Essentially the difference is that the onus is transferred from the dog to the person in charge of the dog. The offence is not that the dog poops, but that the person in charge fails to scoop de poop! This is fairer and easier to enforce and Milton Parish Council supports the change.

Whatever the bye-law it would be an advantage for us all if our streets and recreation areas could be kept free of dog faeces. Clearing up after one's dog is not a pleasant chore, but with the right equipment it can be dealt with cleanly and efficiently. There are various devices one can buy and in Milton a cheap and effective type is now on sale at the Country Park Visitor Centre and at Wallis' Greengrocery on the High Street or you can ask at your vets.

We are grateful to Malcom Busby and Graham Wallis for their co-operation in this and hope that dog owners will equip themselves to deal with the problem routinely. Disposal in one's own dustbin is acceptable if the excrement is double wrapped. There are bins in the Country Park but not around the village.

For those of you who would like reliable information about the risks to people, especially children, from faeces and worms in dogs and cats there are RSPCA leaflets available at the Country Park Visitors Centre, the doctors' surgery and Maple Cottage Veterinary Surgery. Routine worming every 4 to 6 months of dogs and cats and prompt cleaning up after dogs reduces the risks very substantially.

Jo Snaith

Contributions for our news sheet are always welcome. Please try to keep within 100 words and no more than 200. Thank you for your support. JC

Holiday Bungalow ORLANDO FLORIDA

Own heated pool, 3 beds, sleeps six
25 mins Disney Theme Parks
Photos & Video available
Tel. 441403 (Milton address)

Painter & Decorator
Interior & Exterior
High Class Decorating
Free Estimates

R.P. Kent
Tel. 0223
860995



MILTON
WINDOWS

Quality costs no more

PVCu windows, doors, cladding & conservatories

Telephone 0223 440376

Organisations in Milton

Additions and amendments to December 94 list

Group	Contact	Tel. No	Day	Venue	Times
Scout Group (50th)	Bob Norman (G.S.L.)*	860917			
Beavers	Julie Farrington (B.S.L.)*	860160	Mon	Annexe	6.15pm
Cubs 1st	Pat Farrington (C.S.L.)*	860160	Fri	Com. Centre	6.15pm
Cubs 2nd	Jane Garrett (C.S.L.)*	862152	Fri	Annexe	6.15pm
Scouts	Chris Ward (S.L.)*	441169	Fri	Com. Centre	7.45pm
Ventures	Tony Arnold (V.U.L.)*	571952	Tues	Com. Centre	7.45pm
Guide Assoc. Milton District					
District Commissioner	Elaine Halworth	441499			
Rainbows	-	-	Tues & Weds	Annexe	6.15pm
Brownies	-	-	Tues & Weds	Annexe	6.15pm
Guides	-	-	Tues	Annexe	7.30pm - 9.00pm
Day Care Centre	Margaret Sandford	862844	Fri	Com. Centre	

* (G.S.L.) - Group Scout Leader (B.S.L.) - Beaver Scout Leader (C.S.L.) - Cub Scout Leader (S.L.) - Scout Leader (V.U.L.) - Venture Unit Leader

We are pleased to publish any alterations and additions to our December list of organisations. Tel. 861655



Christmas for the Cubs was celebrated with a 'shorts and shades' beach style Christmas Party

Remembering Pam Engall

Everyone who knew Pam Engall will be saddened by her death, last November. She was a valued member of our community and belonged to many village organisations.

She was a keen Carpet Bowls player, an efficient W.I. minutes secretary, a member of the Enterprise Club, The Church Fellowship and Mothers Union.

We have lost a dear friend and she will be sadly missed.

Iris Chilton

Womens' Institute

After two very exciting meetings we must come back to earth. November was members night and it coincided with the 50 years membership of Mary Daniels, and what a wonderful surprise it was, a very well kept secret and I shall never forget what a wonderful time they gave me. I feel I can't thank them enough. They had invited Jessie Salter County Chairman of the C.F.W.I. and members from another W.I. There were flowers galore and other presents and cards.

The Christmas meeting was a do-it-yourself evening with more goodies and wine. We have recently welcomed one or two new members and we hope they enjoy our future meetings.

Our December meeting was tinged with sadness when we had a minute's silence in memory of Pamela Engall who was secretary until she was too ill to carry on, she will be sadly missed.

Mary Daniels

M.J. BLACK

Carpentry & Joinery
Fitted Kitchen Specialists
complete service from
Planning to Installation

Tel. 861205

1 Butt Lane

R B Electrical

Your Milton
Domestic and
Industrial Specialists

Tel. 861869

+++++

++ Karen's Hair Studio ++
1a Coles Road, Milton

Mondays & Wednesdays - Senior
Citizens Days - 20% reduction

Opening hours

Monday / Tuesday 9am-5.30
Wednesday / Thursday 9am-6.00
Friday 9am-7.00 Saturday 9am-5.00

Tel: (0223) 440198

Easy Parking

+++++



Lindsay and Richard in the Fresh F.M Radio Studio

Young Radio Interviewers

Lindsay Waggitt and Richard Barrett-Small, who live in Milton and are both students at Impington Village College, were recently invited by Youth Action Cambridge, to organise a radio interview. We put a few questions to Lindsay about this experience and these are her replies.

Lindsay, how did you first get involved in the radio program?

I occasionally go to Youth Action Cambridge (YAC) That is where I first heard about the radio program. It was the YAC organizer David Hill who was arranging everything for two weeks with Fresh F.M. I was just talking to him about the landfill site at Milton and he offered me a slot.

What was the program called?

What a waste! Milton tip feature.

How did you structure the program?

We started off with an introduction of our views. Next we interviewed, Simon from Greenpeace then Mr. Tassle from East Waste and then Jane Coston County Councillor. We concluded with our new views.

Did you enjoy it?

Yes, we definitely did, we learnt a lot about what happens behind the voices. We were nervous at first but we wanted to continue. We would love to do Radio again.

Is there anything else you would like to add?

Yes, more young people and schools should be involved in this type of activity.

NEWS FROM 100 YEARS AGO

More reports about Milton and adverts from 'The Cambridge Chronicle and University Journal, The Isle of Ely Herald and Huntingdonshire Gazette'. 1882

"THE BURYING GROUND Through the kindness and liberality of Mr. Chapman and King's College, a piece of land has been secured in the Parish for interments. To effect this, an acre of the Rectors land was exchanged with Pembroke College for half of an acre of theirs. This is owing to the proximity of the acquired plot to the Church, the distance being about five minutes walk. With a few exceptions, viz the reserved vaults, the old burying ground in the churchyard is quite full."

More advertisements include:-

"Messrs. WHITMORE of DOWNING STREET and TRINITY STREET 36 gallon caskets of BEER for 36/- and 46/-

HORNIMANS TEA (sold in packets only) at 5000 chemists, grocers and confectioners. 6d, 7d, 8d, 9d, 10d per quarter pound"

In 1892 the Duke of Devonshire was appointed Chancellor of Cambridge University and HORLICKS MALTED MILK could be obtained at all Chemists for 1/6, 2/6 and 11/- a bottle.

M Spooner

Public Notices

Allotments For Rent

Contact Jim Daniels
Clerk to the Parish Council
Tel. 861447

The Induction of Rev. Liz Hubbard

About fifty people from All Saints' Church, Milton attended a service at St. Mary and All Saints' Church, Willingham on Friday evening, 13th.

January, for the induction of the Rev. Elizabeth Hubbard, by the Bishop of Ely.

The commendation was made by Fred Carlton of All Saints' Church, and after the induction, Liz was welcomed by the Church Wardens of St. Mary and All Saints', Willingham and All Saints' Church Rampton,

as their new Rector and occupant of the parsonage at Willingham.

After the service, we were served a splendid buffet supper in the Church Hall.

Liz was Ass. Minister at All Saints' Church, Milton, for nearly three years. Now she has moved on to Willingham we will miss her and her husband George, very much.

Liz did an excellent job here, especially during the interregnum, and made many friends in Milton.

We wish Liz well, as she continues her ministry in Willingham and Rampton, and hope she and George will be happy in their new home in Willingham.

Iris Chilton

Milton Landfill Site

Following the public meeting held in Milton about the dumping of radio active waste, more information was requested by the villagers.

There will soon be a factual leaflet delivered to every home in Milton.

Lizzie's Step Workout
Milton Primary School
Monday's & Wednesday's
7.00-8.00 pm / 8.00-9.00 pm
Milton Community Centre Annexe
Sunday 10.30am
Tel. Liz Ward (0223) 512818

MASQUERADE
Hair & Beauty Salon
6 High Street, Milton, Cambs.
Tel. (0223) 863636
For all hair & beauty treatments

IGM BUILDING SERVICES
EXTENSIONS ALTERATIONS
HOME IMPROVEMENTS
WALLS, PATIOS & FIREPLACES
FREE ESTIMATES & ADVICE
MILTON CAMBRIDGE
TEL. 440126
IAN G MARNOCH

HOWARDS WAY
* Your local Instructor
* Excellent Pass Rate
* Free Pick Up
* Novice to Test
* Extensive Motorway Tuition Available
* Discounts Available
TEL. Cambridge
(0223) 862501
DOT.ADI./CAADI./DIA.
193 The Rowans, Milton, Cambridge.

Puzzle Corner

Competition Winners December Issue

My apologies are due to all puzzlers for a couple of errors in the anagrams last time. These were in numbers 14 and 16 so I have ignored these in all entries.

The solutions to the anagrams were;

- 1 Decorations
- 2 Nativity
- 3 Santa Claus
- 4 Mistletoe
- 5 Herald Angels
- 6 Three wise men
- 7 Happy Christmas
- 8 Carol singers
- 9 Roast Turkey
- 10 Yule log
- 11 Christmas pudding
- 12 Mince Pies
- 13 Parties
- 15 Presents

Many readers got all these right and the first name out of the hat was Cathie Martindale of The Rowans who wins the hair appointment generously donated by **KARENS HAIR STUDIOS**.

The second name out of the hat was Mary Daniels of Benet Close who receives a voucher. Congratulations to both readers.

A Milton Football XI 1905-06

In our Winter Issue of the Village View, we reproduced an old photograph of a Milton Football XI. However, after consulting two mines of information, namely Fred Carlton and Cyril Moule, I was unable to come up with the names of those on the photograph. Fortunately, Frank Burling got in touch and gave me the names of four of the twelve: George Mead, Fred Goodin, Reg Wilson and David Day. Frank also suggested that the photo was taken in the grounds of Milton Hall.

Harry Capitain

SHOTOKAN KARATE

At The St. Andrews Community School
Chesterton, Cambridge

Just a few minutes drive from Milton

- * Caters for both adults and children
- * Modest club training fees
- * Experienced black belt instructors
- * Monday & Wednesday sessions
- * Personal accident/third party insurance

For further information contact the Secretary, Helen Johnson (0223) 834741

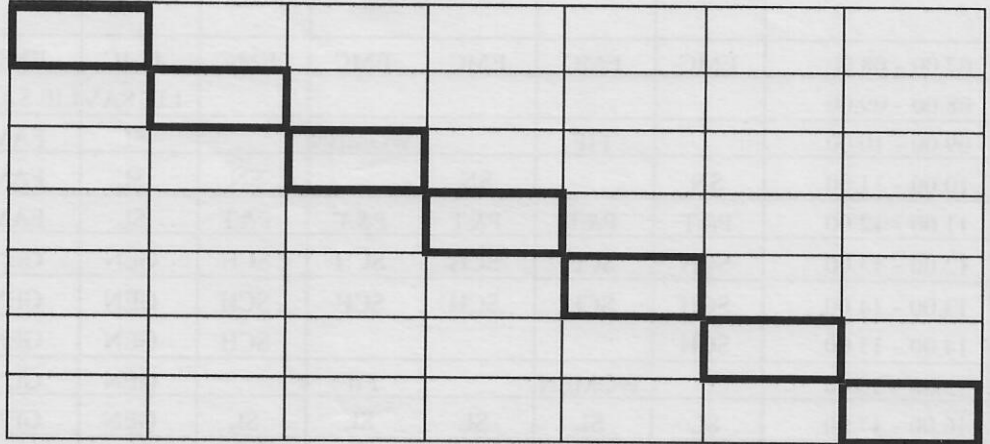
Notice

Milton Village View is unable to check or verify the warranty's authenticity of or representations made by their advertisers and must therefore exclude liability howsoever arising from any advertisements in this newspaper. Nor do any statements necessarily accord with the opinions or beliefs of the Editors, Milton Parish Council or Milton Village View.

This Month's Puzzle

When the seven flowers listed are correctly placed in the horizontal rows of the grid below, the letters in the diagonal (reading from top to bottom) will spell out the name of another flower. The puzzle is to find out the name of this other flower.

LOBELIA; ANEMONE; VERBENA; PRIMULA; ALYSSUM; FUCHSIA; TAGETES;



Send your answer to M J Spooner, 43a Old School Lane, Milton by 1st March 1995. **Betty's Hair Fashions** of Cambridge Road, Milton has kindly donated two £10 gift vouchers (Boots and M&S) for the first two correct entries drawn out of the hat.

Milton Cricket Club

INDOOR NETS

At Cottenham Village College on Mondays
March 27th April 3rd, 10th 24th from 8.00
pm to 9.00 pm.

COLTS UNDER 15'S LEAGUE CRICKET

This section of Milton Cricket Club is our life's blood for the future and we would appreciate parents' help in stimulating their children to join us, and to help in the running of this. Are there any parents who would be prepared to take on the job?

Some of our previous Colts are already making their mark in our senior side and others are playing in our second and third elevens.

Please contact Chris Almond Tel: 440715
or Harry Capitain Tel: 860819

SUNDAY SOCIAL SIDE

Please contact Paul Woodgate Tel 860232
if you would like to play Sunday Friendlies.

Harry Capitain

Thank You

Milton Village View would like to thank publicly Eastern Electricity for their decision to sponsor us for another year.

We would also like to thank all our advertisers for their continued support.

Thank you too to all those who have contributed to the pages of this magazine and those who help with delivery.

Lastly thank you to Cambridge Evening News for printing our village news letter.

We hope everyone will continue to help us keep the pages of this magazine varied by encouraging friends and neighbours too to contribute articles for publication.

Happy New Year.

Milton Morris

Milton Morris men wish everybody a happy new year. We had a happy start to the new year with our usual dance around the village on twelfth night. Four ex-members were able to join us to swell the numbers and an enjoyable evening was had by all. The four hostellers in the village did us proud and our thanks go to the four landlords for their continuing support of the Morris. We would also like to publicly thank the gentleman of the watching public who appeared from his house carrying a tray of whiskies which he offered to the dancers, a gesture much appreciated. Now it is back to practice for the coming summer and with bookings coming in thick and fast it looks to be another eventful year.

Dave Jones (Bagman) tel:441309

IMPACT INDOOR SWIMMING POOL

Provisional Timetable

	MON	TUES	WED	THUR	FRI	SAT	SUN
07.00 - 08.00	EMC	EMC	EMC	EMC	EMC	EMC	EMC
08.00 - 09.00						LIF SAV	LIF SAV
09.00 - 10.00		FIF		WOMEN		SL	FAM
10.00 - 11.00	SN		SN		SN	SL	FAM
11.00 - 12.00	P&T	P&T	P&T	P&T	P&T	SL	FAM
12.00 - 13.00	SCH	SCH	SCH	SCH	SCH	GEN	GEN
13.00 - 14.00	SCH	SCH	SCH	SCH	SCH	GEN	GEN
14.00 - 15.00	SCH				SCH	GEN	GEN
15.00 - 16.00		WOMEN		FIF		GEN	GEN
16.00 - 17.00	SL	SL	SL	SL	SL	GEN	GEN
17.00 - 18.00	CLU	GEN	GEN	GEN	GEN	GEN	GEN
18.00 - 19.00	CLU	GEN	GEN	GEN	GEN		
19.00 - 20.00	CLU	LIF SAV	LIF SAV	LIF SAV	ADU		
20.00 - 21.00	CLU	ADU	ADU	ADU	ADU		
21.00 - 22.00	CLU	ADU	ADU	ADU	ADU		

KEY TO TIME TABLE

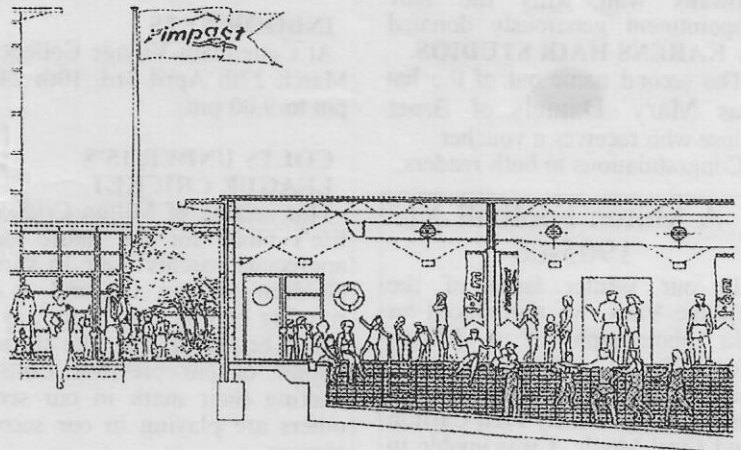
ADU
 Adults only
CLU
 Swimming Club
EMC
 Early Morning Club
FAM
 Family Time
FIF
 Over Fifties
GEN
 General Sessions
LIF SAV
 Life Saving Courses
P&T
 Parents and Toddlers
SCH
 Schools
SL
 Swimming Lessons
SN
 Special Needs
WOMEN
 Women Only

There may be other groups and activities which you would like to see included. Alternatively you might prefer to see one of our proposals held at a different time to that shown. It is important that you let us know what you think. Please write and tell us.

How can you help?

These are some of the ways that you can help bring the Impington indoor swimming pool project to a successful conclusion:

- * By making a donation
- * By making a covenant
- * By making a gift
- * By helping with fund raising
- * By passing on ideas for fund raising
- * By joining IMPACT



Contact Bob Waters Tel.860620

BENET GARAGE

M.O.T TEST CENTRE

All Repairs and Servicing to any make of vehicle

Tel. 420380

BOSCH

Service Agent for Cambridge
**For Fuel Injection and
 Electronic Ignition Service**

Lubricare 2
Lubrication Service
 Oil & Filter change
 All Fluid levels topped up
 Plus
 "Health Check" and written report.
£38.95 + VAT
 Price inclusive of parts & labour

lubricare 1 £16.95 + VAT
 Engine Oil & Filter Change
 (price includes labour)
Full Air Conditioning service available
Calor Gas & Lucas Electrical Stockists
Paraffin & Diesel
Thanks to all our customers for their continued SUPPORT

Lubricare 3 Major Service
Lubricare 2 -"Plus"
 Engine tune up; New spark plugs;
 New contact points; timing; OHV
 Tappets; Carburettor Adjustments;
 New air filter & Road Test.
£69.95 + VAT
 Price inclusive of parts & labour

Printed by Cambridge Evening News, 51 Newmarket Rd, Cambridge.
 Designed and published by Jane Coston, 67 Coles Road Milton Tel. 861655
 Editors - Michael Spooner, Iris Chilton, Harry Capitain, Kim Potts