

Village News Sheet

Delivered Free
Circulation 1,800

What's on page 3
Police update page 4
Local vacancies page 6
New competition page 7

Winter Issue - December 1995

Issue 20



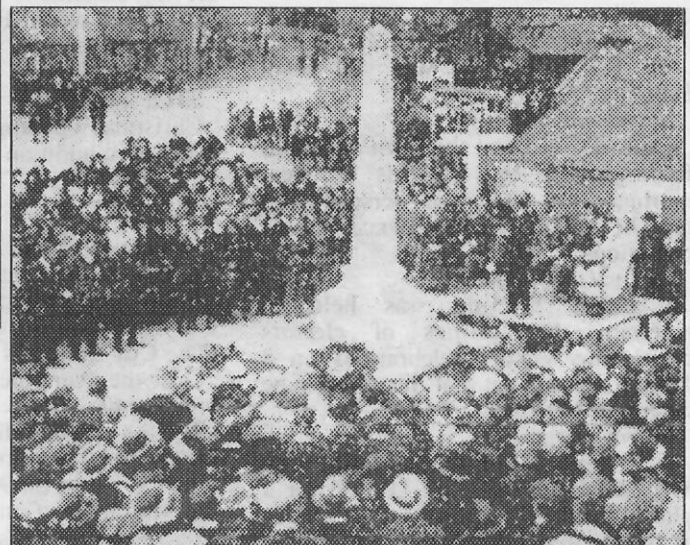
Left

Members of the village paying their respects at the war memorial on Saturday 11th November 1995 at 11.00am when two minutes silence was observed.

Below

The service to commemorate the unveiling of the War Memorial in 1922.

The "old" Waggon and Horses and Landbeach Road are top left. The old blacksmiths shop is the building to the top right where now the road goes straight on towards Ely.



Milton Remembers

War times as recorded in the Parish Minutes
8 May 1919

A Parish Meeting was held owing to the disagreement of a Committee appointed at a Public Meeting called for the purpose of considering the erection of some form of memorial to those who lost their lives.

It was proposed that a monument be erected in the village as a memorial.

continued on page 2



Supporting the community



Next Issue

due out beginning
of February

Items for inclusion in
the New Year Issue
should be with one of
the Editors by the
12th of January



Two members of Swallows staff

SWALLOWS

Swallows is a new and exciting joint initiative between Cambridge Mencap's Edmund House Group of Homes based here in Milton and the Compass Trust which runs the Compass Point Tea-rooms in Sawston High Street. It offers work experience opportunities to people with learning disabilities.

War times as recorded in the Parish Minutes

(continued from page 1)

7 March 1923

The Parish Council accepted the War Memorial from the War Memorial Committee on behalf of the Parish, with all liabilities connected thereto for all time and that the Council will keep the Memorial in proper repair.

29 September 1938

A special meeting was called to discuss arrangements in the event of air raids.

8 November 1938

Mr F M Garner was appointed Billing Officer.

13 December 1939

It was decided that the Barn at Manor Farm would be used as a local mortuary for bodies of persons who may be killed in consequence of war operations.

30 April 1946

A public meeting was held to ascertain the feelings of electors concerning Victory celebrations on 8 June. It was agreed that the children be entertained to tea.

25 November 1963

As a result of a Public Meeting, the War Memorial will be resited on a plot of land adjoining the Post Office at the corner of Fen Road and Coles Road.

Research M Spooner

As many of you will know Swallows is based within the visitors centre of Milton Country Park and offers light refreshments to visitors to the park.

Our current range of items for sale includes hot and cold drinks, fresh doughnuts and scones, selection of prepacked snacks, confectionery and ice-creams.

As winter approaches we have introduced hot soup served with a roll and butter. We hope in the near future to have the facility of a microwave which will increase the range of goods we will have on sale.

Our current opening times are every Saturday and Sunday from approximately 11.00 am to 4.00 pm. Soon after Easter '96 and throughout the summer months we will be open every day from 12.00 noon to 5.00 pm.

A number of people from Edmund House Group of Homes have been actively involved with all aspects of this project, including washing up, clearing tables, serving customers, using the cash register and regular trips to the cash and carry.

If anyone would like to find out further information or may like to help in any way please contact Ian May at Edmund House on 01223 440186 or Swallows on 01223 425231.

STOP PRESS!!

Christmas opening 11.00 am - 4.00 pm - 27th, 28th, 29th December and 1st January in addition to normal weekend opening.

Milton Craft Fayre

We would like to thank all from the Village who have given us their continued support for the Craft Fayre over the past ten years.

A special thanks go to our wonderful cake makers (far better than Mr Kiplings!), our tombola prize donators who are always so generous, our car park attendants (The City Council's got nothing to compare!) plus our very own band of helpers.

Over the years the fayre has become like a family event, and we are very proud and humble to have such a wonderful team.

Thanks to them all plus our exhibitors and the many visitors that help us to make money for those not as fortunate as ourselves. This year we were able to donate over £3,000 to the Macmillan Day Centre, plus we were able to give a donation to the Milton Day Centre and the Luncheon Club for their Christmas Celebrations.

The Craft Fayre has now raised over £22,000 over the past ten years.

Thank you all.

Tina Barker & Jean Bowyer

PAINTING
DECORATING
GLAZING

Mobile
0860 453533
(local resident)

B.J. LEONARD

Betty's

Uni-Sex Hairdresser
49 Cambridge Road
Tel. 420526

FLORIES

BRIDAL FLOWERS

Fresh, dried & silk bouquets etc.

Let me design your wedding personally

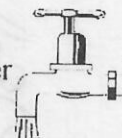
Fully qualified florist for 22 years

Phone Daryl 862093/420720

M J POTTS
HEATING & PLUMBING
SERVICES

10 Lander Close
Tel: 01223 440795

All Installations/Repairs
undertaken
Approved CORGI Gas
& TOTAL OIL Installer
Work Guaranteed
FREE ESTIMATES



New Years Eve Dance

Milton Community Centre

(organised by Milton Cricket and Football Clubs)

A J Disco
 Tickets: Harry Capitan Tel. 860819
 Barry Bond 836159
 Early booking advised

Milton Country Park

All events/activities start from the Visitor Centre. Please wear suitable clothing.

A charge is made for the children's WATCH activities.

For further information contact:-
 The Ranger - Malcolm Busby
 on (01223) 440196

DECEMBER

Saturday 2nd - WATCH -
 games and quiz. 2.00 - 3.30 pm.

Sunday 3rd - Christmas Walk

A walk, a warming drink and mince pies with the Ranger.
 Booking essential. Charge £2.00.
 2.00 pm.

Sunday 17th - Reed Bed Work
 for the final time this year
 clearance of scrub from an area to
 allow reeds to spread.

JANUARY

Saturday 6th - WATCH
 Picture This 2.00 pm - 3.30 pm

Sunday 28th - Voluntary Work
 Wetland Restoration
 9.00 am - 12.00 noon

FEBRUARY

Saturday 3rd - WATCH
 Sew A Scene 2.00 pm - 3.30 pm

Saturday 3rd - Night Hike
 6.00 pm start

50th Cambridge
 Milton & Landbeach Scouts

JUMBLE SALE

Milton Community Centre
SATURDAY 16TH MARCH
AT 2.30PM
 Admission 20p
 Thank you for your support

Friends of Milton Country Park

13 December
 Carol and Festive Song Evening in the
 Visitor Centre

13 January
 Visit to Welney leaving at 1.00 pm

26 March
 AGM at the Visitor Centre
 7.00 pm for 7.30 pm

June - Evening visit to Brandon Forest

Further details are available from
 The Visitor Centre or
 Sue Siggs - Tel: 01223 515750

Police & Councillor Local Surgery

Saturday 9th December 11.30 am
 Milton Primary School

50th Cambridge Scout Group

VALENTINE'S DANCE

17th February 1996
 Dancing to live band

SAX APPEAL

Milton Community Centre
 8.00pm to 12.00 midnight

Tickets from the Wool Shop
 Coles Road Milton
 Telephone 01223 420676
 (inc. hot supper)

10p Christmas Postal Service

Starts early December

Organised by

Milton Venture Scout Unit
 From 7th December
 you can leave your
 Christmas cards at
 Dillons News Agents
 or Milton Wool Shop

Please Note

we cannot accept any post for
 distribution outside the village
 This service has the cooperation of the Royal Mail
 and permission has been given

ALL SAINTS CHURCH

CHRISTMAS SERVICES

December

Wednesday 6th	8.00 pm
Sunday 17th	4.00 pm
Monday 18th-21st Dec.	7.00 pm
Sunday 24th	8.00 am
	10.30 am
	3.30 pm

Hospice Carols with Salvation Army
 Carol service
 Carol singing around the village
 Holy Communion
 Family service
 Starting Blocks Christmas Service.
 This service is especially for young
 children and their families
 Midnight Holy Communion

	11.15 pm
Christmas Day 25th	8.00 am
	10.30 am

Holy Communion
 Family Service
 followed by Holy Communion

PARK UPDATE

The Friends have been very pleased with the response to Aluminium Can collecting and another £20 went into the kitty this month. So please continue collecting them for us, and leave them at the Visitors Centre (crushed if possible) next time you come to the park.

We have now started work on the Sensory Garden, and look forward to completion. Before that can happen there is much work to be done, and with very limited funds we are looking for donations of materials for construction. Initially we need some topsoil - we know where it is but need transport, also we are looking for hard-core and materials to create several different surfaces for paths. Can you help - or can you give us a contact? Please ring Malcolm Busby on 01223 420060. Alternatively perhaps you would be willing to sponsor a plant or shrub.

Our activities for the new year include a visit to the Wildfowl and Wetland Trust at Welney, plus many other activities, so please look out for posters around the village.

The Friends are always pleased to welcome new members, and if anyone would like more information please pop into the Visitors Centre and chat to one of our members or call Tim Siggs on 01223 515750. Membership still remains only £5.00 per household per annum.

Sue Siggs

SCRABBLE CLUB

A very pleasant and successful evening was held in the Church Hall, the profits going to Charity. The winner scored 935 for two games - the charity of her choice was ME, of which her daughter is a sufferer. The amount raised was £40. The next Scrabble evening will be 12 January 1996, when this year's winner will be announced.

M Daniels

Safer Villages Initiative

Milton Parish Council in conjunction with the Police Service are exploring through the "Safer Villages Initiative" ways of preventing or dealing with crime in our village. You may ask, "what are the problems?" on the other hand you may have first hand experience as a victim.

The official police records show that the most common reported crimes in Milton for the period 1st Jan 1995 to 31st of August 1995 were:-

- 1) Theft from motor vehicles 94
- 2) Theft of motor vehicles 49
- 3) Criminal damage 34
- 4) Burglaries - Houses 15
- Other 26

In total 293 crimes were reported to the Police during the above period. (Which is not unusual for a village of this size.)

There are some simple measures that you as a resident can take to reduce the above:-

- 1) Report suspicious incidents to the Police
- 2) Join Neighbourhood Watch
- 3) Do not leave property in your car when parked
- 4) Protect your car with an alarm or crooklock
- 5) Ensure your home is secure when leaving it unattended

One subject that has caused concern and considerable inconvenience is criminal damage, vandalism, hooliganism, drunkenness, carried out by a small group of teenagers. Some of the group live in the village and clearly their parents could help by deterring them from their anti-social behaviour, before they end up with a criminal record.

The Police have been called many times during the last few months to deal with the above complaints. To help them the Parish Council have employed C.S.S. Security Services to randomly patrol the village. Should we be doing this? Should we be doing more? Your ideas or views would be appreciated. Please write to the Clerk to the Parish Council, 84 Coles Road, and let us know what you think.

Bob Waters

Parish Constable Minutes of Milton Parish Council 28 March 1895

On the proposition of Mr G Wilson and seconded by Mr W H Easy it was resolved that Mr Reech be Constable for the ensuing year. Further it was resolved on the proposition of Mr Elsdon and seconded by Mr Carlton that the Constable be paid £2-2-0 for the year ending 1895.

The Milton Beat

There are several mistaken beliefs about Policing. Some of the most common are: **The police already know about this.** Very often we don't because everyone has made the same assumption.

There is nothing the Police can do. That is correct if we are not informed, there is nothing we can do, however if we are made aware we can react accordingly.

Police Solve Crimes. We do not crack crimes in a Sherlock Homes style. The truth is that for the vast majority of crimes a conviction is secured by members of the public giving us the information.

Nothing happens to the offenders when the Police arrest them.

Approximately 80% of people cautioned for offences never re-offend. Perhaps if the other methods of punishment were effective we would not have a crime problem. Further for an offender to be cautioned they must make a full and frank admission of guilt. During the week 17th - 23rd November, as a result of increased youth related crimes, patrols were stepped up in the village. Using combinations of high profile and plain clothes patrols. A number of arrests have been made. It must be noted that a proportion of our problems come from within the village.

Problems contacting the Police? It would be appreciated if you would notify me in writing at Histon Police Station and I will then ensure that the appropriate department is made aware.

Ian Parton Pc 220

Community Beat Officer

Milton Day Centre

The Day Centre was two years old in September and continues to flourish with a varied programme of games, quizzes, speakers and activities.

The 50th VE/VJ Anniversary was celebrated with decorations and a wonderful display of memorabilia brought along by members, including medals, ration books, identity cards, photographs, etc., and both happy and some sad memories were shared, followed by a sing song of the favourite wartime songs. Some of our members went to the school to see their play 'The Evacuees' and also to help some of the older children doing a special wartime project by answering questions and sharing their experiences.

The close relationship with the school continues with the children visiting us on a regular basis to play bingo and games or to entertain us with music.

Our stall at the Village Fayre proved successful as was our summer trip to Needingworth for a most enjoyable lunch and several of our members joined with the Luncheon Club for a pleasant trip to Lavenham.

Our recent coffee morning and bring and buy was well supported, thanks to all concerned, and a special thank you must go to Jean Bowyer, Tina Barker and their colleagues for their generous donation of £100 as a result of the Craft Fair. This will help towards our Christmas Lunch at the White Horse in December.

We have had several new helpers join us (and sadly lost some for such reasons as ill health) and I would like to thank all those who support and help us and to wish everyone a Happy Christmas and a healthy and happy New Year.

Margaret Sandford

Contributions for our news sheet are always welcome.
Please try to keep within 100 words and no more than 200.
Thank you for your support. *JC*

Holiday Bungalow ORLANDO FLORIDA

Own heated pool. 3 beds, sleeps six
25 mins Disney Theme Parks
Photos & Video available
Tel. 441403 (Milton address)

Painter & Decorator Interior & Exterior High Class Decorating Free Estimates

R.P. Kent
Tel. 01223
860995



MILTON WINDOWS

Quality costs no more

PVCu windows, doors, cladding & conservatories

Telephone 01223 440376

KIDS R US

Out of School Club Launched

This club was launched with an open afternoon on Saturday 18th November at the Community Centre Annex.

This was well attended and enjoyed by children and parents who were offered the opportunity to sample some of the activities that the club would offer.

The table tennis was in frantic use with the ball making surprise visits to some of the other activities. These included puppet making, badge production, boxed games and Play Doh. Also very popular was a video of "The Lion King" and a computer. It's funny how long some parents took showing their children how to play the games!

We wish the club every success as a welcome addition to child care facilities in Milton. *J C*

Milton Out of School Club KIDS R US

Community Centre Annex
Term time 3.15pm to 6.00pm
School Holidays 8.00am to 6.00pm
Providing quality playcare for
children aged 4 to 11 years
For further information and
registration details
Tel. Karen Finney 01223 440212

Milton Toy Library

Milton Toy Library raised a total of £107 at their coffee morning on 19 October 1995, which will be used to purchase new toys. Many thanks to those who made cakes and helped to man stalls, sell raffle tickets and make the tea. We would also like to thank everyone who came along to support us and made this event such a success. Merry Christmas to all our members and we look forward to seeing you soon. *Sue Smith*

Notice

Milton Village View is unable to check or verify the warranty's authenticity of or representations made by their advertisers and must therefore exclude liability howsoever arising from any advertisements in this magazine. Nor do any statements necessarily accord with the opinions or beliefs of the Editors, Milton Parish Council or Milton Village View.

M.J. BLACK
Carpentry & Joinery
Fitted Kitchen Specialists
complete service from
Planning to Installation

Tel. 861205
1 Butt Lane



Village children enjoying a day at the All Saints' Holiday Club

ALL SAINTS' HOLIDAY BIBLE CLUB 1995

Over eighty happy village children were all at sea for a week in October, at what has now become an annual event in the calendar of the Parish Church. The youngsters enjoyed learning about Jesus through the eyes of the disciple Peter, the fisherman. The title of the activities, which all had a nautical theme, was "Shipshapes". To enhance the maritime atmosphere the Church Hall was transformed with fishing nets, lobster pots, life belts, fish and even real sea weed hanging from the rafters.

To enter the Hall each day the children had to climb along a ten foot dinghy and once "on board" they built themselves cabins from large sheets of cardboard. Much sticky tape and coloured paint was used!

There were videos, games, songs, dances and drama and lots of fun and laughter. On Sunday, following the week's events, many of the children came to Church with their parents, relatives and friends to celebrate the week at an especially lively family service. By then there were many exhausted older members of the Shipshapes crew, but everyone agreed it had been yet another wonderful Holiday Club. Already many dedicated people at All Saints are planning for next year. To keep everyone in SHAPE there will be a one-day event in the February half-term holiday. *R Trollope*

Mr Gerry Patten

Over the years to many "little people" of the Milton Play Group he was the old gentleman with a long white beard wearing a red cloak who visited them at their Christmas Parties - to a little girl he is "Mr Gerry" who will one day bring him his promised "bacon butt" and to members of management committees, groups and organisations and the general public he was, until recently, the Manager of The Milton Community Centre.

Gerry resigned from the position as Manager in September of this year and his going leaves a void difficult to fill.

Gerry's contact with the Community Centre and the village stretches back over many years - as a Parish Councillor - as a member of the Management Committee and then Chairman of the Management Committee.

On retiring from the Police Force Gerry was appointed Manager of the Community Centre which post he held for almost nine years.

Gerry also served as a Trustee of the Milton Parochial Charities for ten years and his contribution to the work of the charities within the village was given generously with the same care and attention as he gave to his duties as manager of the Community Centre.

Anne And Gerry - Happy Christmas and a Guid New Year.

Gerry Patten - A Man for All Seasons.....

Ann Moore

R B
Electrical

Your Milton
Domestic and
Industrial Specialists

Tel. 861869

++++++
Karen's Hair Studio
1a Coles Road, Milton
Mondays & Wednesdays - Senior
Citizens Days - 20% reduction
Opening hours
Monday / Tuesday 9am-5.30
Wednesday / Thursday 9am-6.00
Friday 9am-7.00 Saturday 9am-5.00
Tel: (01223) 440198
Easy Parking
++++++

RECTORY FARM SHOP A10 MILTON BY-PASS

FRESH VEGETABLES & POTATOES

FOR QUALITY
& VALUE FOR MONEY
BUY DIRECT FROM THE FARM



TURKEYS

DON'T FORGET TO ORDER
YOUR FARMFRESH CHRISTMAS
TURKEY

CHRISTMAS TREES

WE WILL HAVE CHRISTMAS
TREES FROM THE END OF
NOVEMBER
NORWAY SPRUCE, BLUE
SPRUCE, NORDMAN &
HOLLY WREATHS



R.H. CHAPMAN
RECTORY FARM
MILTON
TEL. 01223 860374

VACANCIES

Applications are invited
for three posts at the
Milton Community Centre

MANAGER/ADMINISTRATOR

10 hours a week on average.
at £6.00 an hour.

TWO CLEANERS/ CARETAKERS

21 hours a week on average.
at £5.00 an hour.

Details of posts can be obtained
from:

The Clerk to the Parish Council
Jim Daniels - Tel: 01223 861447

Applications should be made in
writing by 20 December 1995 to:

The Chairman,
Milton Parish Council,
3 Lyndhurst Close, Milton,
Cambridge.

Lizzie's Step Workout

Milton Primary School
Mondays & Wednesdays
7.00-8.00 pm / 8.00-9.00 pm
Tel. Liz Ward (01223) 512818

MASQUERADE

Hair & Beauty Salon
6 High Street, Milton, Cambs.
Tel. (01223) 863636
For all hair & beauty treatments

Traffic Calming

in High Street and Cambridge Rd.

The Parish Council have been discussing with Bob Menzies of the County Council's Traffic Management Section the possibility of introducing traffic calming in Milton.

Although traffic calming is very successful at reducing the number of accidents it is also controversial and it is County Council policy to only introduce traffic calming where there is local support. The Parish Council are also keen to establish that there is support in Milton before formally requesting traffic calming.

In the next few weeks a leaflet will be delivered to every house in Milton, which will include a questionnaire asking you whether you want traffic calming. Please read the leaflet carefully before answering the questions.

Both the Parish and County Councils will consider the response to this questionnaire before deciding whether or not to put forward a bid for funds.

While no design work has been done the scheme is most likely to consist of sheltered parking bays, mini roundabouts and pedestrian islands. Road humps (sleeping policeman) are unlikely to be used because of the needs of emergency vehicle access and buses. Sections of The Rowans and Coles Road may also need treating to discourage rat running. Road humps would be suitable in these roads.

A vote in favour at this stage does not commit Milton to having traffic calming. It is only the start of a lengthy process that will include more opportunities to have your say, not only about the general principle of traffic calming but also on the details.

If you have any questions please contact:- Bob Menzies.

Accident Investigation Team,
Cambridgeshire County Council.
Tel (01223) 317749.

Milton Waterbeach

Footpath/cycleway

You will have noticed recently that the footpath between Milton and Waterbeach has been improved. This is to make the path suitable for cyclists and will be completed with a small section leading into Milton early in 1996 exactly 60 years on from when it was first put in as a footpath at a cost of £500!

IGM BUILDING SERVICES

EXTENSIONS ALTERATIONS
HOME IMPROVEMENTS
WALLS, PATIOS & FIREPLACES

FREE ESTIMATES
& ADVICE
MILTON
CAMBRIDGE
TEL. 440126

IAN G MARNOCH

Congratulations

to
Fred & Sybil Carlton

Who celebrated their
Golden Wedding on
25th October
with friends and family

Travellers

Land adjacent to Tesco's

There have been many separate occasions on which this land has been occupied by travellers. Strenuous efforts are made by the Parish Council and your local District and County Councillor to control this.

Until recently measures taken seemed to be reasonably successful but unfortunately the most recent group of travellers cut their way through the hedge to gain access to the site.

The powers of our local police to help in these matters are restricted, so we are pleased that South Cambs District Council once again have paid for action to be taken to force the travellers to leave.

Now the travellers have been successfully evicted the site will be cleared.

The main problem with this strip of land is that it is privately owned. The Parish Council would like to buy this area and to change its use but so far the owners have been unwilling to sell. We are now trying to persuade the owners to build a bund/dig a ditch to stop unauthorised occupation of this site happening again.

Richard Summerfield (District Cllr)
Jane Coston (County Cllr)

County Council Budget 1996/97 - Public Consultations

Next year the County Council will be holding two public consultation meetings on its budget for 1996/97. These meetings offer a chance for members of the public (and Parish Councils) to express their views on the County's spending priorities for the forthcoming financial year.

These are to be held on Wednesday, 24 January 1996 at 7.30 pm at Neale Wade Community College, Wimblington Road, March and on Thursday, 25 January 1996 at 7.30 pm at the Shire Hall, Cambridge.

D Earle
Director of Finance & Administration
Cambridgeshire County Council

HOWARDS WAY

- * Your local Instructor
- * Excellent Pass Rate
- * Free Pick Up
- * Novice to Test
- * Extensive Motorway Tuition Available
- * Discounts Available

Tel. (01223) 862501
(0589) 218045

DOT.ADL\CAADI.IDIA.
193 The Rowans, Milton, Cambridge.

Puzzle Corner

The WORD CIRCLE proved to be a popular competition. The winning entries were from Helen Latchem of Ballard Close (209 Words) and Jim Daniels (159 Words). Congratulations to Helen and Jim who both receive prizes.

Here are the 209 words entered by Helen Latchem:

ABSENT
ALTO
ALTOS
ABET
ABETS
ATONE
ATONES
ABLET
ACTON
ALECOST



ASCOT
(12)
BLEAT
BLEATS
BLOAT
BLOATS
BOLT
BOLTS
BLEST
BASTIE
BEST
BLAST
BOAT
BOATS
BATS
BEATS
BEAT
BOAST
BENT
BLENT
BEAST
BLOT
BLOTS
BETS
BETA
BATON
BATONS
BELT
BELTS
BESOT
BATE
BATES
BOTS
BOTEL
BOATEL
BLET
BLATE
BLATS
BLAT
BASTO
BANT
BASNET
BAST
(41)
CONSTABLE
CLEAT
CLEATS
CAST
COST
CLOT
CLOTS
CASTE
COAST
CATS
COAT
COATS
COSTAL
CASTLE
CANT
CENT
CENTS
CLOSET
COST
COTS
COTE
COTES
COBALT
CANST

CANTO
CANTOS
CATE
CATES
CELT
CELT
CENTO
CENTOS
CLAT
CLOTE
COATE
COATES
COLT
COLTS
COSTE
COSTA
COSTEAN
COSET
(42)
EAST
EATS
ECLAT
ELTS
ENACT
ENACTS
ESCOT
ESTOC
ETALON
ETNA
(10)
LOST
LAST
LEAT
LEATS
LOCATE
LOCATES
LEAST
LEST
LANCET
LANCETS
LATE
LEANT
LENT
LENT
LACTOSE
LOTS
LACET
LANT
LANTS
LATS
LOAST
LOSTE
LOTA
LACTONE
(24)
NOTABLE
NOTE
NOTES
NEST
NEAT
NETS
NATES
NEOBLAST
(8)

OATS
OAST
OATEN
OBLAST
OBLATE
OCTAL
OLENT
(7)
STOLEN
STABLE
SLOT
STAB
STALE
STOLE
SLANT
SENT
SEAT
SABOT
SCANT
STONE
SATE
SLATE
SNOT
SCAT
SLAT
SALT
STEN
SCOT
STEAL
SALET
SALTO
SCEAT
SCENT
SCLATE
SECANT
SECT
SETA
SETON
STANE
STEAN
STOLA
(33)
TONAL
TONS
TANS
TENS
TONE
TONES
TEAL
TEALS
TABLE
TABLES
TOES
TABS
TEAS
TALE
TALES
TALON
TALONS
TACO
TACOS
TALC
TACE
TACES
TAEL
TAELS
TANE
TELA
TELOS
TELSON
TESLA
TOLE
TOSE
TOLA
(32)

TOTAL 209
WORDS

The puzzle for this month is a word association. You have to find a word that has a link with each of the three words. eg. STONE linked with HAIL...../.....AGE/..... THE CROWS

- 1 BOX TREE CARD
- 2 GOLF RADIO WATCHER
- 3 HORSE BASKET BRUSH
- 4 ACID BOW CHECK
- 5 BRANDY DRAGON DECISION
- 6 FANCY FULL UNIFORM
- 7 DERBY WORK ENGINE
- 8 LOG MARK END
- 9 BOX MILK DROPS
- 10 STOOL HOLE TOED
- 11 BEATEN FORECAST STORMY
- 12 COACH DOOR LANDING
- 13 BOOK GALLERY BIG
- 14 DOVE TURN SOUP
- 15 SOUP TABLE SINK
- 16 CHORUS FALSE RAID
- 17 VITAMIN COLOUR INCOME
- 18 WORD MOUNTAIN KEY
- 19 FORWARD TALKING GOING
- 20 SUMMER BLOCKS SEA

Please send entries to:

Michael Spooner, 43A Old School Lane, Milton by 7th January 1996

The prize this month has generously been donated by **Karen's Hair Studio**, 1a Coles Road, Milton and is for a cut and blow dry to the value of £11.50.

There will also be a small prize for the runner up.

Milton Outdoor Bowls Club

Milton Outdoor Bowls Club held their 4th Annual Dinner and presentation on 11 November 1995 at Chesterton Bowls Club, the evening was enjoyed by over 50 members, wives and guests this being the finale of another enjoyable season of bowling.

Trophies were presented by the president Mr T Arthur to the club winners:

Mens Singles - Lawson Salver : J Daniels

Ladies Singles - Capitain Rose Bowl : A Hodge

Ladies Pairs - Godden Cup : P Waters & L Sheen

Mixed Pairs - Haird Cup : J King & G Sheen

Member of the Year - Colin Barkham Trophy : T Arthur

Greenkeepers Trophy : M Daniels - This award was given to Mary for just being Mary Daniels and no further explanation should be required to regular readers of the Village View.

Mid-Week League - B Waters

Mini League : Stormers, it was good to see in this team our only playing junior member so well done to Daniel Coston and keep it up next season.

A whisky tumbler engraved with a bowls scene was presented to Terry Arthur for all the work on the Green during the course of the season. A plant and earthenware pot were presented to Sylvia Arthur for being support to Terry in his year as president and a willing pair of hands when washing up was required.

Godfrey Sheen (Secretary)

WHIST DRIVES

In December we complete fifteen years of monthly Whist Drives, there are usually eight tables in play. We are building up to the Christmas Drive which will be on Wednesday, 20 December, when the prizes will all be of a festive nature and we shall be letting our hair down! All these activities are quite hard work but worthwhile at the end of the day when everybody says they have enjoyed it.

M Daniels

Milton Morris

Milton Morris wish to inform everybody that their practice sessions now take place in the Dining Hall at Impington Village College every Tuesday evening from 8.00 pm. Everything else remains the same. We are hoping this will attract new members from the age of 14 years upwards. Now is the time to start to make the most of the fun for next summer. Full tuition is given so no experience is necessary.

We finished last season with a late flowish dancing at Thornham in Norfolk, Duxford, Anglian Water's Gala, and Great Chesterford Steam Rally during September and October.

Keep an eye out for us on Twelfth night (Jan 6) as we embark on our annual stagger from pub to pub in Milton. If you want to find out more about us do come and talk to us or better still give me a ring on 01223 441309. A happy new year from us all.

D Jones

Childminders Group

If you require a childminder or any general enquiries about childminding contact Lynda Molloy Tel. 862093

ARE YOU THERE?

Organisations in Milton List

Please help us update this list for publication hopefully in the February issue.

BANNOLD NURSERIES

SUPPLIERS OF:
SCREENED TOP SOILS
BARK MULCHES
MUSHROOM COMPOST,
SAND, GRAVEL
HARDWARE ETC.

ANY QUANTITY DELIVERED
SAME DAY WHENEVER
POSSIBLE

ALSO MINI DIGGER/DUMPER
& LORRIES FOR HIRE
LAND CLEARANCE
FACILITIES

01223 860671

MOBILE 0860 733960

4 BANNOLD COURT, WATERBEACH, CAMBRIDGE

IMPINGTON SPORTS CENTRE AUTUMN/WINTER PROGRAMME

	am	7	8	9	10	11	12	pm	1	2	3	4	5	6	7	8	9	10
Mon				School		P&T	BLT		50+	Ladies	Hire	General Swim	Club					
Tue						P&T	BLT		School	Lesson	Club	Gen S	Club					
Wed		EMS		School		50+	BLT		P&T	Gen S	Hire	General Swim	Ladies	Lanes	Adults			
Th				School			BLT		School	Lesson	Gen Swim	A F	50+	Adult less				
Fri		EMS		School		P&T	50+	BLT	Sch	Gen swim	School	General Swim	Ladies	Adults				
Sat						Lesson	Hire		P&T	General Swim								
Sun				Family Swim	Club	Hire			Gen swim		Lanes							
Admission Charges £1.60 - Adult, EMS, BLT 80p - Junior, OAP, Under 3 FREE EMS Early Morning Swim (lanes) P&T = Parent & Toddlers BLT = Bathing at Lunchtimes (lanes)																		

BRANFORD COMPUTING

Osicom Gold 486dx2/66

4mb Ram
 420mb hard disk
 Dual Speed CD-ROM Drive
 1.44mb Floppy Drive
 16 bit Sound Card
 25 Watt Speakers
 1mb SVGA graphics card
 14" SVGA NI Monitor
 other configurations available



CALL NOW FOR CHRISTMAS

01223 575253

37 Butt Lane, Milton, Cambridge

50th Milton Cub Scout Football Club

We are pleased to announce that 50th Milton Cub Scouts are now members of the Cambridge Cub Scout Football League. Our opening match was on 28 October against 54th Arbury and Milton worked hard to gain a 2-1 victory. The second match against 14th Cambridge on 11 November was a hard fought encounter, with Milton coming out winners in a seven goal thriller (4-3). Buster Harradine scoring a hat-trick and Danny Matthews scoring the other.

Thanks to an excellent team performance we have had a very encouraging start to the season, and hope that with enthusiasm and hard work we will enjoy a successful cup run.

Many thanks to all the Cubs and their parents for their support, to Mr Gilmore for allowing us to use the school field, and to our sponsors Anglian Water and Carl Ronnow for providing us with the team strip.

A Messett

Carpet Bowls Club

Three members of Milton Carpet Bowls (Len Sandford, Lorna and Godfrey Sheen) were selected to play for Cambridgeshire during the 1994/95 season and this culminated in a finals weekend at Scarborough Leisure Centre 3rd-6th Nov. This was for a team of 24 players from the County to contest the English National League Championship and the English National County Championships.

The English National League Championship was played between the winners of the Southern Area (Cambridgeshire) and the winners of the Northern Area (Durham) after 6 games and 66 ends of bowls the points score was level, so shots difference came into account and Cambridgeshire claimed victory by 7 shots.

The English National County Championships were played over a two day period against more Counties who had reached this stage (Durham, Northumberland, North Tyneside, Essex, Suffolk and Cambridgeshire) each team of 4 playing 10 games of 8 ends duration at the end the final score stood Durham 75 points Cambridgeshire 76 points, victors by 1 point.

People who claim that Carpet Bowls is not a Competitive and Exciting Sport should have been present during that weekend, it may have changed their minds. It was very rewarding for myself to be part of this as a player and also as Chairperson of the Cambridgeshire Carpet Bowls Association.

Godfrey Sheen

Milton fields three teams in the South Cambs Carpet Bowls League.

In Division One, Milton II, under Captain Godfrey Sheen has won 2 of its first 6 matches, with a points count of 26 for and 34 against. In the same division, Milton III under Captain Jim Daniels has won 4 of the first 6 matches. The points record for Milton III is 36 for and 24 against.

In Division II, Milton I under Captain Spencer Maltby, has made a remarkable start by winning all 6 matches and in the process accumulating 46 points and conceding just 14.

The Bowls Club meets on Monday and Thursday afternoon at 2.15 pm and on Thursday evening at 7.30 pm.

BENET GARAGE

M.O.T TEST CENTRE

All Repairs and Servicing to any make of vehicle

Lubricare 2 Lubrication Service

Oil & Filter change
 All Fluid levels topped up
 Plus

"Health Check" and written report.

£38.95 + VAT

Price inclusive of parts & labour

Tel. 420380.

lubricare 1 £16.95 + VAT

Engine Oil & Filter Change
 (price includes labour)

Full Air Conditioning service
 available

Calor Gas & Lucas Electrical
 Stockists

Paraffin & Diesel

Thanks to all our customers for
 their continued SUPPORT

BOSCH

Service Agent for Cambridge
 For Fuel Injection and
 Electronic Ignition Service

Lubricare 3 Major Service Lubricare 2 - "Plus"

Engine tune up; New spark plugs;
 New contact points; timing; OHV
 Tappets; Carburettor Adjustments;
 New air filter & Road Test.

£69.95 + VAT

Price inclusive of parts & labour

Printed by Cambridge Evening News, 51 Newmarket Rd, Cambridge.
 Designed and published by Jane Coston, 67 Coles Road Milton Tel. 861655
 Editors - Michael Spooner, Iris Chilton, Harry Capitain, Kim Potts