

Village News Sheet

Delivered Free
Circulation 1,800

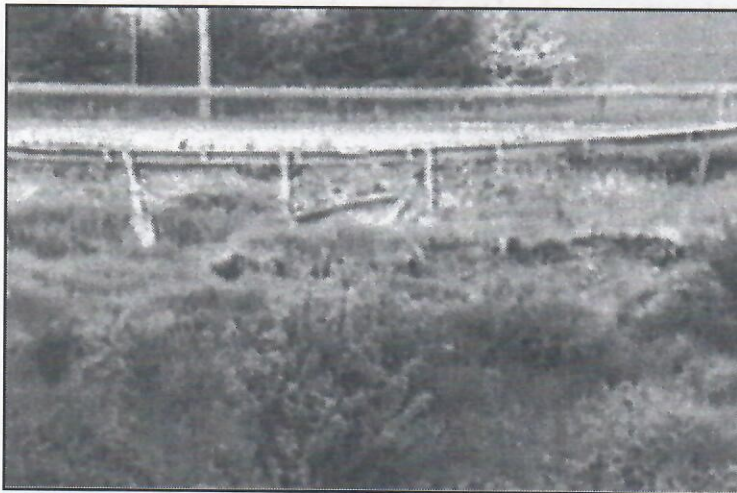
What's on
New competition

page 3
page 7

Summer Issue - June 1998

Issue 33

Milton Landslide



Milton slip road causing concern as the bank erodes and fence slips down the bank

A10 Milton Tesco's Slip Road

The slip road from the A10 to Milton village has an embankment slippage/surface failure directly behind the footway. This had been monitored prior to Easter when excessive rain caused the slippage to accelerate to its current position. The probable cause is that the embankment is constructed of local gault clay extracted from Milton which has weathered over time and allowed surface water to enter into the top of the embankment. Although dramatic the stability of the carriageway has not been affected.

Works to repair/replace the area of slippage have been put in hand for early June. The area of temporary fencing will be maintained until those works are completed.

Owen Williams, Managing Agents for Highways Agency

Marathon Man raises over £2,460

I would like to say a big thank you to everyone who sponsored me for my run in the London Marathon on April 26th. The support and enthusiasm given to me by Claire Vickery, Chairman of the Milton School Association, Tom Gillmore and his staff, and parents and school children was a great inspiration leading up to the big day.

So far we have raised a fantastic £2,460 for the M.S.A. and that figure is still rising. A special thank you also to Michael James and Bishops of Histon who acted as shirt sponsors.

Well done Peter Welton from all the editors



Peter Welton with his medal

Ode To The Marathon

At five miles I was doing well,
I looked fit, you could tell.
At ten miles I was feeling sore,
My feet were tender on the floor.
Fifteen miles gone, I felt the pain,
"Why am I doing this, must be insane."
At twenty five, I'm almost there,
With squelchy shoes and ratty hair.
The crowds cheer "come on Peter,
you're almost done."
I see the finish, the end has come.
I get my medal - pain, joy and glee,
I finished it in three hours, forty - three.
Peter Welton



Powerful friends in
the community



Eastern Group includes Eastern Electricity, Eastern Generation,
Eastern Natural Gas, Eastern Power & Energy Trading and Eastern Electricity Contracting

Next Issue

due out beginning
of **October**

Items for inclusion in
the Autumn Issue
should be with one of
the Editors by the
12th of September

To all my friends in Milton

On behalf of myself and my family, I would like to thank you very much for all the kind thoughts, messages of sympathy and flowers received on our very sad loss of Bill. I would like to send special thanks to all those who donated and to all those who were able to attend the service. It helped us all through these difficult times.

From Daphne.

Womens Institute

Our April Speaker was Alan Bingham, "road sweeper", "Cambridge Guide", who was such a marvellous speaker none of us dropped off to sleep. We heard how, although he was University taught, he came to be a road sweeper, a very happy contented man. We are a very happy band of people, and always ready to welcome new faces, on the fourth Tuesday.

Mary Daniels

Enterprise Club

The Enterprise Club for over 55's is held in the Church Hall the first and third Tuesday each month from 2p.m. until 4.30p.m.

New members are welcome. We have three 1/4 size snooker tables and also play scrabble and card games.

The snooker competition was won by Michael Spooner for the second year running. Congratulations Michael.

Further details available from

Iris and Fred Chilton Tel. 862381

Golden Wedding Anniversary



Maria and George Davis

Photo - courtesy of CEN

Maria and George Davis of Old School Lane, Milton, celebrated their golden wedding anniversary on 26th March. Maria began her celebrations that day by helping to prepare dinners for the Thursday Lunch Club in All Saints Church hall. "My wife is happy when she is busy," says

George. "In fact, I've spent so much time over the last 50 years thinking of how to keep her busy, I'm exhausted!"

The couple marked the occasion with their family, enjoying a restaurant meal in the evening and continuing their special anniversary with an all day party during the ensuing weekend. "We have a daughter, Donna, who lives in America with her husband and their three children. They couldn't be here in March but will be visiting us during the first three weeks of June when we can re-celebrate our anniversary and Donna's 40th birthday." Maria and George will be winging their way out to the States later in the year, just to keep the celebrations going and to keep Maria busy.

Milton Day Care Centre

Volunteer Drivers Wanted

Milton Day Care Centre meets on Fridays and caters for 20 elderly members, who are transported to and from their homes in Milton to the Community Centre by mini-bus.

The work entails picking up the mini-bus from Edmund House, Milton, at about 9.45 am. A volunteer helper accompanies the driver to supervise the collection of members. At about 2.45pm the members are returned to their homes by mini-bus.

In addition to mini-bus drivers we are in need of drivers who can use their own four-door car, to supplement the use of the mini-bus.

If you can spare an hour in the morning or an hour in the afternoon on a Friday, and would like to give some support to the elderly in the community, then please contact either:-

Jim Fisher (Chairman)

on 01223 862725 OR

Pauline Waters (Secretary)

on 01223 860620

Local Shopping Trips

Volunteer Drivers

Needed

There are many people in the village who already have help getting to and from Tesco's with their weekly shop but as this need increases, so does the need for more volunteers. If you feel you could help I would be pleased to hear from you and would be able to put you in contact with those who need this type of help.

If you require help from a volunteer driver please call and we will do our best to help.

Volunteer Contact Needed

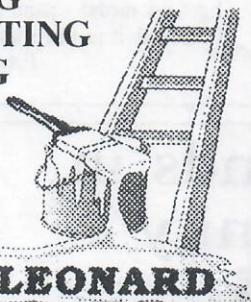
If anyone would not mind being the contact for this valuable service I would be very pleased to hear from them.

Jane Coston Tel 861655

PAINTING DECORATING GLAZING

Mobile
0860 453533

Fax:
01223 863620
(local resident)



B.J. LEONARD

Schwarzkopf

*For lasting curls
style and volume with
'Natural Styling'*

at
Bettys Unisex Hairdressers
Tel: 420526

FLORIES

BRIDAL FLOWERS

Fresh, dried & silk bouquets etc.

Let me design your wedding personally

Fully qualified florist for 26 years

Phone Daryl 862093 or 01353 688303

M J POTTS HEATING & PLUMBING SERVICES

300 The Rowans
Tel: 01223 440795

All Installations/Repairs
undertaken

Approved CORGI Gas
& TOTAL OIL Installer
Work Guaranteed
FREE ESTIMATES



MILTON SCHOOL ASSOCIATION

Summer Dance

Following on from their
success at last year's BBQ,
the music will be provided by

Rhythm & Rhapsody

Saturday 13th June
8.00 pm until 11.30 pm

Main Hall, Milton Primary
School

Adults only

Tickets £7.50 per person
including cold buffet
Bar available

Order early to avoid
disappointment

Bob Pain (01223)514332

A REGISTERED CHARITY NUMBER 103 5659

Milton Village Fayre Weekend

Family Fun Disco

Saturday 11th July

7.00p.m. - 11.00p.m.

Bar * Childrens Bar * Pay as
you eat BBQ

Milton Community Centre
Accompanied children free -
14 and over £1 only
Tickets - Tel 862763

Village Fayre

Theme

'The Wild West'

Sunday 12th July

12.30 - 5.00p.m.

Coles Road Recreation Ground

Arena Events

Stalls and Attractions

Static Displays

Friends of Milton Country Park

Events for 1998

26th July

Day visit to the Dragonfly
Museum, Ashton. Entry fee.
Refreshments may be available.

26th September

Afternoon walk at Grafham
Water. Picnic lunch before the
walk. Car park charge.

1st November

'Friends' Barbeque.

Social Evening for members.
6.00 pm at the Visitor Centre.
Booking is essential for all the
above events, please contact either
one of the Rangers (420060), or
Sue Siggs (515750).

also

12th and 13th June

Display at the Natural
History Society

Conversazione, Downing
Street, Cambridge.

11th July

Display and stall at Histon
Feast Market.

12th July

Display and stall at Milton
Village Fayre.

Help required at these events.

Volunteers please contact
Sue Siggs (515750).

A.G.M.

Notice is hereby given that, on Wednesday
17th June 1998 at 8.00 p.m., the following
A.G.M.'s will take place at Milton
Community Centre, Coles Road, Milton.

1. Milton Village Hall and Recreation
Ground. A.G.M.
2. Milton Community Centre and Recreation
Grounds. A.G.M.
3. A.G.M.'s to be followed by meetings of
elected and appointed members and officers.

Acting on the direction of the Charity
Commissioners, it is proposed to transfer the
assets and liabilities of the Milton Village
Hall and Recreation Ground to a new charity
to be known as the Milton Community Centre
and Recreation Grounds. The facilities will
continue to be managed in the same manner
for the benefit of the residents of the parish of
Milton. All residents of the parish of Milton,
aged 18 years and over, are entitled to attend.

New Secretary at Milton

Community Community Centre

Mrs Julie Gray has been appointed to the
post of secretary at the Community Centre in
the village and over the next few months,
ably assisted by her daughter Charlotte
Collen, will be contactable at the centre
during the times as shown on the list. Julie
takes over this recently extended job from Jo
Sollars who held the post for eighteen
months. So while we say goodbye and thank
you to Jo for all her hard work and dedication
we would like to welcome Julie and Charlotte
to the Community Centre team and say "Do
you realise what you've done?!!!!!!!" (Only
joking).

Below are the times we will make sure that
someone is at the Community Centre for any
queries or bookings.

From 1 June 1998 The Milton Community
Centre Office will be open for queries or
bookings at the following times:

Monday Evening	7.00pm. - 8.00pm.
Tuesday Evening	7.00pm. - 8.00pm.
Wednesday Morning	10.00am. - 11.00am.
Thursday Afternoon	3.00pm. - 4.00pm.
Friday Evening	7.00pm. - 8.00pm.


Messages can also be left on the
answerphone: 01223 862763 and someone
will return your call. Any alterations to the
above will be shown on the window of the
Community Centre Office.

Ian Davis Chairman.


Community Centre Management Committee

Violin
and
Piano
Tuition

Please contact:
Fiona O'Shea, B.Ed Hons
Tel. 440548 (Local resident)

MILTON
GAS
SERVICES

Eddie Kikas
29 Landbeach Road, Milton
Tel/Fax: (01223) 861810
Mobile: 0831 228181

Corgi Registration
Number 161938

Servicing, Installation & Repairs to
all Gas Boilers, Fires, Cookers,
Central Heating Systems etc.

Nigel GODDEN
AUTO SERVICES

All makes - service and repairs
CITROEN AND TOYOTA SPECIALIST
SERVICING, CAMBELTS REPIPING,
CLUTCHES, NEW CHASSIS, BRAKE
OVERHAUL, WELDING, ELECTRICAL
FAULTS, ABS, INJECTION SYSTEMS ETC.
CALL NOW FOR FRIENDLY ADVICE OR QUOTE

UNIT 13 CAVE IND ESTATE
FEN ROAD
CHESTERTON
CAMBRIDGE
TEL: 01223 425125 MOBILE: 0831 817981
MILTON RESIDENT

'What's In The Name of a road?' No. 2

So why Fox's Close, the question I posed in the last issue of the Village View? The answer is not directly related to a four-legged animal, but to one with two, Sir Cyril Fox the one time eminent local archaeologist and historian (note his book, 'The Archaeology of Cambridgeshire', published C.U.P. 1923). Sir Cyril lived at Red Gables opposite Butt Lane and next to the The White Horse where new gabled houses exist today.

Roads in Milton have increased in relation to the steady expansion of housing developments after the Second World War. The first of these was Bene't Close immediately after the War on land adjacent to Bene't Farm which was last farmed by the Easy family two decades ago before the Rowans development. The largest initial post War development was Coles Road named after the antiquarian the Rev. William Cole who restored Milton House, Fen Road in 1768 and lived there until he died in 1782. Old School Lane leads off Coles Road, partially developed on land to the rear of the site of the old school in Fen Road, and off this is a cul-de-sac Pryor Close named after the Pryor family who lived at Milton Hall at the turn of the century. Another cul-de-sac off Coles Road is Wilson Way named after a farming family connected with Milton for several centuries.

Other developments which occurred over three decades ago and named after local features or families are Cherry Close (an old orchard), Willow Crescent (after Willow House a farm once behind the Waggon & Horses), Goding Way (a corruption of Goodin the family farm on this site), Knights Way (on the site of the drive to Milton Hall where the Knight family lived after they built the Hall in the late 18th Century), and Lyndhurst Close on farm land behind Lyndhurst Farm house on Butt Lane.

In the next edition of the Village View I will begin to review the significance of the names of roads and housing developments which had occurred in Milton within the last 30 years.

Derek Booth

Cottenham Village College Summer School 10th - 14th August 1998

Word - processing
Woodcarving
Automata
Bridge
Spinning
Isle of Ely
Papier mache
Stained glass
Indigo dyeing
Watercolour painting
Patchwork and quilting
Cook around the world
Creative embroidery
Health and well being
Smoke your own pots
Silkscreen painting
Tapestry weaving
Fenland drawing

Tel. 01954 288944 Fax 01954 288949

Eric Pranklin trading as **Pete's Quality Meats**

1a Arbury Road, Cambridge
Tel. 01223 352853

Suppliers of first class pork,
lamb, beef, poultry and game

**HIGH WELFARE AND
FREE RANGE PRODUCTS A
SPECIALITY**

FREE delivery in Milton
Hand made sausages and burgers

B-B-Q packs, freezer packs,
mixed grills made to order

SPECIAL OFFERS AVAILABLE
Tel: Eric 01223 352853

From Muntjac to Motorcycles

An unexpected title for news from your Country Park, but both could be seen during the early part of May.

As part of the National Dawn Chorus week, seventeen of us gathered in the rather cold conditions outside the Visitor Centre at five, yes five, o'clock in the morning on the first Sunday. One of the nightingales was heard close by to send us on our way around. Just along by Remembrance Meadow, a small buck Muntjac came walking towards us. He appeared at first to be oblivious to a group of humans in the Park at that time of day, and kept coming for a while. Then, his nose was up in the air, he glanced at us, and decided that perhaps he would go for cover. It was rather cold and we had a few spots of rain and I think that most of the birds either thought it too early or too cold to do too much singing. Several species of bird life were heard on our trip round and we were treated to a flying display by a pair of terns over Dickersons Lake. We also had a glimpse of a kingfisher, and cygnets which were probably on their first outing from the nest that morning. After the walk we were rewarded for our guts and determination with breakfast in the Visitor Centre.

The previous week, the Ranger led a 'Dawn Chorus walk for those who could not get up in the morning'. It was on the Saturday, starting at a more respectable time of 6.30 pm, yes in the evening! I understand that in the sunset and twilight the birds in the Park gave a magnificent display of an evening chorus. That was followed by soup and a roll and a cuppa in the Visitor Centre. A few stayed on until almost ten o'clock, taking out the bat detector and listening to their calls at frequencies normally inaudible to us.

On the second Sunday of May, the Park was host, for the second time, to the East Anglian Branch of the Veteran Motor Cycle Club. The Club had organised a road rally around the area, starting and finishing at Milton. Over twenty old machines of all types, some three-wheelers, were put on display on their return mid-afternoon whilst their riders, and in some cases passengers enjoyed a well earned cup of tea and refreshments. This may become an annual event, we will have to wait and see.

Don't forget, the Visitor Centre is open every afternoon during the Summer. Come in and see the displays and have a cup of tea or ice cream. It's your Park, enjoy it.

Tim SIGGS.

Friends of Milton Country Park Chairman.

MILTON POST OFFICE

CARDS	SHOE REPAIRS
CONFECTIONARY	PHOTO COPYING
DRY CLEANING	FAX SERVICE
STATIONERY	GIFTS

2 COLES ROAD MILTON

Open: Mon - Fri 9.00am. to 5.30pm.
Saturday 9.00am. to 1.00pm.

**Painter & Decorator
Interior & Exterior
High Class Decorating
Free Estimates**

R.P. Kent

Tel. 01223

860995



**MILTON
WINDOWS**

Quality costs no more

PVCu windows, doors, cladding &
conservatories

Telephone **01223 440376**

World Book Day

On the 23rd April, it was World Book Day (William Shakespeare's birthday!) To celebrate, we had a rather unusual day. First, we were visited by Gillian McClure, an author. She told us about the book she was writing, and also told us how a book is structured. Her illustrations were especially good, and she had spent a long time doing them.

We then went to Dillons Bookshop in Cambridge where we were given a talk about publishing and printing books by Lynne Ashton of Child's Play Publishers. She also gave us an extremely energetic experience of how printing machines work, which involved screaming and the waving about of arms! She also told us about different styles of books which we found very interesting.

When we arrived back at school, we had a very short time to write a book review on our favourite book. Some of us then gave quick talks on these books in assembly. Our favourite book is 'Swallows and Amazons' by Arthur Ransome.

Matthew Taunton & Tim Hills
Class 10 B



School Days in Bromwich & Birmingham during the 1920's

I started school aged four years in the 1920's at Lodge Road Primary School, West Bromwich, Staffordshire.

I well remember my first day. It was a lovely pleasant room with a cheerful coal fire burning in the grate. The children sat in a circle and the teacher took me on her knee to introduce me. We discovered we shared the same birthday and so began a friendship which lasted many years after our family moved to West Bromwich.

When I was seven years old my father's work took us to south Birmingham and I attended the local village school.

While taking part in a school play I was 'spotted' by a member of the local dramatic group and I spent several years with them. I sat the 11 plus at Erdington High School for Girls and won a free place. Unfortunately my parents could not afford the uniform and I then moved to Bierton Road, Senior Girls School, a school four miles from my home. No school buses then so it meant walking in all weathers. I took my cooked lunch in a basin which was placed in the school kitchen oven. Sometimes it was warm when I got it but often it was not.

I played netball for the school and did some running.

I did not shine at housewifery. I had to report to the Headmistress because I could not blacklead the grate. Miss Copson was very kind and said "Don't worry. I wish I could write English Essays".

I think the toilets were across the playground but somehow those things do not seem to have remained in my memory. What I remember is being proud of being captain of the "Yellows" and thrilled when my sister was made school captain.

When I was fourteen I obtained a scholarship to Queen's Commercial College, Birmingham and emerged from there three years later a fully qualified secretary.

My working life has followed the same pattern. My qualifications ensured that I did not have to go into a factory when war came as my firm applied for me to be in a reserved occupation.

My husband's work brought us to Cambridge in 1961 and we settled in Milton. I spent several years as a typist at Eastern Electricity where I made many friends.

My final job as Secretary to the Training Officer at the University never seemed like work at all, I loved every minute of it.

Gwen Tonks

Further Names for the School Photo of 1958

Stuart Carlton has sent in some further names for the photo printed in the last issue of the Village View.

3rd row, right hand end - Susan Palmer.

He also thinks two of the Archibald children were Ian and Alistair but he is not sure which was which.

Other names he has given are David Worsley, Linda North and Angela Whittington.

He also remembers a trip in Miss Sutcliffe's car to Peakirk and thinks it was an Austin or a Ford Popular.

Bats in the Belfry?

OR was it a bird? It was quite worrying for someone living on her own when she kept hearing a bird whistling in her attic. She first thought about asking the Parish Clerk what to do about it, but instead asked Tony Onyett to investigate. So suitably attired complete with step ladder and a torch to locate this phantom bird, he decided perhaps she ought to get a new battery for the smoke alarm!!

Mary Daniels

M.J. BLACK

Carpentry & Joinery
Fitted Kitchen Specialists
complete service from
Planning to Installation

Tel. (01223) 277772

Mobile 0831 626398

R B *Electrical*

**Your Milton
Domestic and
Industrial Specialists**

Tel. 365200

+++++

Karen's Hair Studio
1a Coles Road, Milton

Wednesdays
- Senior Citizens Day - 20% reduction

Opening hours
Tuesday 9am-5.30 (Closed Mondays)
Wednesday / Thursday 9am-6.00
Friday 9am-7.00 Saturday 9am-5.00

Tel:(01223) 440198
Easy Parking

+++++

GUEST ADVERTISER

PRODUCTS THAT COMMUNICATE

Advertise effectively with products to build your business, promote your brand, or simply make people remember you.

ALL BUSINESS GIFTS ♦ MOUSE MATS ♦ PENS
PVC BINDERS ♦ WALLETTS ♦ FOLDERS
P.O.S. & DISPLAY HOLDER ♦ PLASTIC CARDS
EXHIBITION ITEMS ♦ CLOTHING

Osiran *Speciality Advertising*

Tel: 01223 425750 Fax: 01223 426576

The Burleigh Suite, Burleigh Business Centre,
52 Burleigh Street, Cambridge, CB1 1DJ, England

PRODUCTS THAT COMMUNICATE

Local Music Teacher

David Verge Tel. 01223 862077

Music Lessons

Alistair Lyle Tel. 01223 321915

BRICKLAYING/BUILDING CONTRACTORS

FOSTER & CARBIS Tel. 863275

PAINTER & DECORATOR

DAVID PECK Tel: 01954 211428

Garden Maintenance

Mr Medlow Tel 01954 252047

IZZIE'S QUALITY GIFTS

8 High Street, Milton Tel. 501601

Peacock Travel, Executive Coaches
Day Trips, Short breaks Tel. 811481

QUALIFIED COUNSELLOR

KATHY PLATT Tel. 01223 861510

The above are waiting for advertising space.

Concessionary Bus Passes

From April 1998 bus passes (which can be bought at the Post Office) cost £16 each (£5.50 for those in special need). Milton Parish Council will reimburse £5.50.

If you want to claim your £5.50 contact the clerk on 861447 giving your name and address, number of bus pass and expiry date.

Jim Daniels

Lizzie's Workout

Milton Primary School

Monday 6.45 pm - 7.30 pm BodyBlitz, Thighs, Bums & Tums
7.30 pm - 8.30 pm Step Class
Wednesday 7.30 pm - 8.30 pm Fat Burning Step

Tel. Liz Ward (01638) 721318

MASQUERADE

Hair & Beauty Salon

6 High Street, Milton, Cambs.

Tel. (01223) 863636

For all hair & beauty treatments

The Farmland Museum and Denny Abbey

The Farmland Museum tells the story of Cambridgeshire farming and village life, especially in the 1940s and 50s, and includes specially designed activities for children. The majority of artefacts and photographs come from villages across Cambridgeshire and this strong regional focus has proved very popular with local visitors.

Denny Abbey is a Grade 1 listed building dating from the twelfth century which at different times has housed communities of Benedictine monks, Knights Templar and Franciscan Nuns.

The Museum opened together with the Abbey last year for the first time and received nearly 11,000 visitors. This year, there are new displays on sugar beet and monastic life as well as two new Southdown sheep to go with the museum's four hens. We are very happy to welcome groups such as local societies, W.I's etc. and offer evening tours and teas. We also encourage school groups, who can use our classroom, handling collections and take part in themed activity sessions such as a Victorian Washday.

The Museum and Abbey host a varied joint events programme throughout the Summer. On the 24th and 25th May we are holding a Farm Animal Weekend with plenty of rare breeds of farm animals as well as basket-making and hurdle-making demonstrations. On 28th June there will be sheepdog demonstrations by Will Grey who rounds up not just sheep, but children and geese too! Sunday 5th, 12th and 19th July will see tours of Denny Abbey led by a Ghostly Countess of Pembroke, who lived at the Abbey in the fourteenth century. The last Sunday of July is Baskets, Barrels and Bodgers - a day of traditional country craft demonstrations.

Felicity Fallon

Assistant Curator Tel. 01223 860988

Denny Abbey is situated on the A10 between Waterbeach and Chittering Reg. Charity No. 289555.

Private Limited Company
No. 1808079. VAT Reg.No. 637 1589 1

National Carers Week 8th - 15th June 1998

Are you looking after someone at home?

Various events are being planned locally for carers.

● Trinity College visit Mon 8th June

● Carers consortium A.G.M. "voice of carers" - Thursday 11th June at Meadows Community Centre, St. Catherine Road, Cambridge 10.30 a.m. - 3.30 p.m.

● "Take care of yourself day" Saturday 13th June.

We also have information regarding support.

To receive The Carers Newsletter and obtain more information, or if you need help to attend, please ring the Carers' Centre (01223 712072).

Carers National Association contacts:
Sue Austin, C. N. A. Representative
Ely & Cambridgeshire --
Tel. 01353 663928

Liz Earl, C. N. A. Representative
Burwell -- 01638 742739

Notice

Milton Village View is unable to check or verify the warranties, authenticity of or representations made by their advertisers and must therefore exclude liability howsoever arising from any advertisements in this newspaper. Nor do any statements necessarily accord with the opinions or beliefs of the Editors, Milton Parish Council or Milton Village View.

ALMOND INDEPENDENT

INDEPENDENT FINANCIAL ADVISORS

Chris Almond

MLIA(dip)

FINANCIAL ADVISOR

A MEMBER OF DBS FINANCIAL MANAGEMENT PLC
Tel. 01223 440715 FAX. 01223 502510



MONDAYS
7.00 - 8.00 pm

LEGS, BUMS & TUMS
Main Hall
Milton Community Centre

NEW! WEDNESDAYS

7.00 - 8.00 pm

Commences:

14 January 1998

Hi/Lo AEROBICS
Milton Road Junior School
Gilbert Road, Cambridge

£2.50 per class

Please bring an exercise mat/towel with you

Julie Durrant : 01223 441036

RSAYMCA Qualified Instructor

Member of the Exercise Association

Clean Quality Workmanship from Planning to Completion.

FREE ESTIMATES & ADVICE



BUILDING
CONTRACTOR

86 Butt Lane
Milton

- New Houses
- Extensions
- Renovations
- Conservatories
- Loft Conversions
- UPVC Windows & Doors

TELEPHONE: 01223 440126

HOWARDS WAY

DOT.ADL/CAADI/DIA.

- * Excellent Pass Rate
- * Top Grade Instructor
- * Free Lesson / Discounts
- * Refresher Courses
- * Motorway / Dual

Carriageway Tuition

Tel. (01223) 862501
(0589) 218045

193 The Rowans, Milton, Cambridge.

Puzzle Corner

Congratulations to our two prizewinners of the April competition. They were Mary Daniels of Benet Close and Grace Cowley of The Rectory. Both received the prizes which were kindly donated by **M J POTTS - Heating and Plumbing Services.**

The answers to the 'disguised' proverbs were:

1. Many hands make light work
2. Too many cooks spoil the broth
3. Pride goes before a fall
4. A stitch in time saves nine
5. Look before you leap
6. Still waters run deep
7. Time and tide wait for no one
8. Faint heart never won fair lady

For the competition this month, you will have to find some holiday destinations. Each of the items below is an anagram of an English sea side holiday resort. Where do we go on holiday?

- 1 NO TAPING
- 2 RUM HOE TRAY TAG
(two words)
- 3 BE FARM COIL
- 4 PLANT BEARS
- 5 HARBOUR COGS
- 6 WE LIT FOXES
- 7 COP BALL OK
- 8 RUM THOU BONE
- 9 BURN SEA TOE
- 10 WEFT TOOLS

This month the prize is an unusual one. **Eddie Kikas of Milton Gas Services** has donated a 'free service to your central heating boiler or gas fire, excluding any parts which may be required'.

Please send your entries to Michael Spooner 43a Old School Lane Milton Cambridge CB4 6BS by 1st July.

Welcome Support For Milton Activities

Through East Waste Ltd and Enventure Southern
You may have noticed in the press, local projects being supported through the landfill tax credit scheme such as Tomkin's Mead at Milton Country Park.

'Tomkin's Mead is to be restored and made more accessible to the public after the Friends of Milton Country Park made a successful bid for funding to Enventure Southern, which is backed by leading Cambridgeshire waste management company East Waste via the Landfill Tax Credit Scheme.'
Cambridge Evening News, Dec'97.

And then Cambridge Evening News, 12 th Feb'98
'a new bridge and footpath suitable for wheelchair access has been installed at Tomkin's Mead.'

The Landfill Tax Credit Scheme allows landfill operators to invest some of the tax they collect on behalf of the Government into local community and environmental projects.

In the Milton area we are fortunate in having East Waste running the Milton landfill site. East Waste was one of the first landfill operators in the country, and the first in Cambridgeshire, to commit money to local projects through the Landfill Tax Credit Scheme.

East Waste's contributions are channelled through Enventure Southern an independent non profit making environmental body to whom grant applications should be made. Hazel Moran at Enventure Southern can be contacted on

Tel/Fax: 01284 765100.

Milton based projects that have received support so far are detailed below:

- | | |
|--|----------------------------|
| 1) All Saints Church Milton | Grant for £2,500 |
| To help with the maintenance of electrical and drainage works. | |
| 2) Milton project - details to be released later | Grant up to £10,000 |
| 3) Milton Cricket Club Colts Development | Grant for £2,500 |
| Support for funding towards an all weather pitch to enable further development of youth cricket at Milton. To help fulfil youngsters' potential in the game of cricket, in which Milton seems to be a county leader. | |
| 4) Milton Country Park | Grant for £3,000 |

At Tomkin's Mead a bridge has now been installed providing good access (including wheelchair and buggy users) from the community centre area into Milton Country Park through Tomkin's Mead nature reserve which is a haven for wildlife and orchids.

Enventure Southern and East Waste Ltd are pleased to be able to use this government tax scheme to put something back into the local community and as more projects receive support we will keep you updated through this News Sheet.

Say it with Flowers - answer
The daffodils on Milton Landfill spell EWL standing for East Waste Ltd.

CCAH - aka The Farm College

The future of the college has been uncertain for some years and various schemes have been explored to secure its status and continuation. A public announcement has now been made that a merger is to take place between CCAH and the Norfolk College of Arts and Technology, Kings Lynn, on August 1st 1998. The combined colleges will then work together under a new name.

This means that the college as we know it will continue its work here on its present site. Milton Parish Council has supported CCAH in its efforts to secure its future, and congratulates them on their success and wishes them well.

Jo Snaitth

Milton Hall

Pi Group, the present occupant of Milton Hall, has explained the delay in opening the new entrance from Ely Road. The car park inside the grounds has been re-modelled in preparation and the company fully intends to complete the scheme.

Due to expanding business Pi are building new premises at Cottenham, to open in September 1998, and the costs of this mean there is no money available just now to spend at Milton. Staff will be re-located to Cottenham and the temporary sheds and Portakabins here will be removed.

Once the new facility is properly established they will be able to complete the new entrance at Milton. Milton Parish Council will of course be monitoring this.

Jo Snaitth

VACUUM CLEANER SERVICE & REPAIR



Brian Honey
44 Denny End Road
Waterbeach
Tel: 01223 861708
evenings and week-ends

FREE ESTIMATES
LOCAL COLLECTION

MILTON SCHOOL OF DANCE



Under the direction of
JUDITH HILL R.A.D., I.S.T.D., BB, S.B.
For further details telephone 01223 236851

**Ballet . Tap . Jazz . Ballroom
Latin American**

DENNIS COUSINS

CARPENTER & JOINER



**EXTENSIONS
FITTED KITCHENS
ALTERATIONS
IMPROVEMENTS
CUSTOM JOINERY**

**23 GODING WAY
MILTON
CAMBS CB4 6AH
TEL: (01223) 560657**



Derek Underwood opens the new cricket nets

Milton Cricket Club

Colts Section

Because of the growing awareness that very little was being done for young cricketers in this area, The Milton Cricket Club Colts Development Fund was launched at the end of 1995, with Maurice Claydon-Wallace at the helm, the target being £23,000, to provide three practice nets with all-weather surfaces, and an all-weather strip to be laid within the cricket square.

On April 23rd, 1998 the club's dream was realised, when Derek Underwood the England and Kent cricketer, before a large crowd at the Sycamores Recreation Ground, officially declared the facility up-and-running.

The cricket club would like to thank the following organisations for their support of the Development Fund. Milton Parish Council, South Cambs D C, The Foundation for Sports and the Arts, The Lords Taverners, Anglian Water, Cambridge Corporate Communications, Cambridge Evening News,

Kernow Plusfile, JB UK Ltd. 3i, Ultra Violet Products, Milton Community Centre Management Committee. Thanks are also due to individuals who donated to the fund and who are too numerous to mention here.

Milton are now represented in the C.C.A's, under 15, under 13 and under 11 youth leagues, and have in excess of 50 youngsters on their books.

Harry Capitain President Milton C.C.

Milton Carpet Bowls Club

Our Club players have continued to excel themselves in competitions throughout the season.

The standard of play has been extremely high. Four members of the club play for Cambridgeshire County teams - Lorna and Godfrey Sheen, Jim Daniels and Spencer Maltby. Cambridgeshire were winners of the Southern Area and the Eastern Counties League. Durham won the Northern Area of the Eastern Counties League, so now Cambridgeshire will play Durham at Hemsby on Friday 30th October 1998. They will also compete in the National Fours Championship at Hemsby on Saturday 31st and Sunday 1st of November 1998.

Milton Club Competition Results

Ladies Singles Winner; Lorna Sheen, runner up; Janet Maggot.
Mens Singles Winner; Daniel Coston, runner up; Spencer Maltby.
Pairs Winners; Jim and Mary Daniels, runner up; Spencer Maltby and John Crush

Afternoons Sessions Competitions Results

Mixed Singles Winner; Iris Chilton, runner up; George Cunningham
Mixed Pairs Winners; Iris Chilton and Jim Daniels

South Cambs League

Milton I are to be congratulated for coming top of the first division in the South Cambs League, after being promoted from 2nd Division last season. Well done!

Iris Chilton



Miltons Team 1
Division 1 League Champions

BENET GARAGE

M.O.T TEST CENTRE

All Repairs and Servicing to any make of vehicle

Lubricare 2
Lubrication Service
Oil & Filter change
All Fluid levels topped up
Plus

"Health Check" and written report.

£38.95 + VAT

Price inclusive of parts & labour

Tel. 420380

lubricare 1 £16.95 + VAT
Engine Oil & Filter Change
(price includes labour)

Full Air Conditioning service
available

Calor Gas & Lucas Electrical
Stockists

Paraffin & Diesel

Thanks to all our customers for
their continued SUPPORT

BOSCH

Service Agent for Cambridge
For Fuel Injection and
Electronic Ignition Service

Lubricare 3 Major Service
Lubricare 2 - "Plus"

Engine tune up; New spark plugs;
New contact points; timing; OHV
Tappets; Carburettor Adjustments;
New air filter & Road Test.

£69.95 + VAT

Price inclusive of parts & labour

Printed by Cambridge Evening News, Winship Road, Milton, Cambridge, CB4 6PP

Produced and delivered by volunteers. Designed and published by Jane Coston, 67 Coles Road Milton Tel. 861655

Editors - Michael Spooner, Iris Chilton, Kate Marshall, Harry Capitain