

Village News Sheet

Delivered Free
Circulation 1,800

What's on	page 3
Parish Council spending	page 5
New competition	page 7

Spring Issue - April 1999

Issue 37

Village to get first sheltered housing scheme

A decade of planning has resulted in the building of a sheltered housing scheme which aims to enable future tenants to live in the same village as their relatives.

Contractors have started site preparations on a corner of Milton recreation ground where they will build 23 two-bedroom apartments, two one-bedroom apartments and one two-bedroom bungalow for pensioners, and a house for the scheme's warden. The scheme will be completed in March 2000. The first sheltered housing scheme of the new millennium?

After consultation with the Parish Council the scheme will be named Barnabas Court, after Mr Barnabas Shipp who was a well known Milton resident whose family is still connected with the village.

The scheme is a partnership between Milton Parish Council, South Cambridgeshire District Council and Cambridge Housing Society, which has vast experience in providing homes for the elderly.

Milton Parish Council has long recognised the need for sheltered accommodation in the village. Bob Waters, chairman of the parish council, said: "For the last 10 years we have been wanting sheltered housing in Milton. We have the largest population of any village in the South Cambridgeshire District Council area which has not got any sheltered housing for residents, so we are delighted that work has got under way to redeem this."

Richard Summerfield, South Cambridgeshire district councillor for Milton, said: "In the past, lots of our residents have had to move away from the village, their roots and friends as they've grown frail. In the future, some of them will be able to move into the sheltered housing scheme."

Sue Dellar, a Cambridge Housing Society officer, said: "The specific design of this scheme allows individuals who become frail and unable to look after themselves to receive care within their own apartment - all fixtures and fittings have been designed for easy use."

While the precise details of the nomination process are still to be finalised, it is important that anyone interested in moving into Barnabas Court has their name registered with South Cambridgeshire District Council housing department. If you have not done this, please contact them now as the allocation process is likely to take place in two or three months time.

The scheme has been funded by South Cambridgeshire District Council and Cambridge Housing Society and The Housing Corporation.

For more details, contact:

Bob Waters on 01223 860620

Coun Richard Summerfield on 01223 860715

Sue Dellar on 01223 357600



New road access is laid



Photograph shows: left to right, site visit...

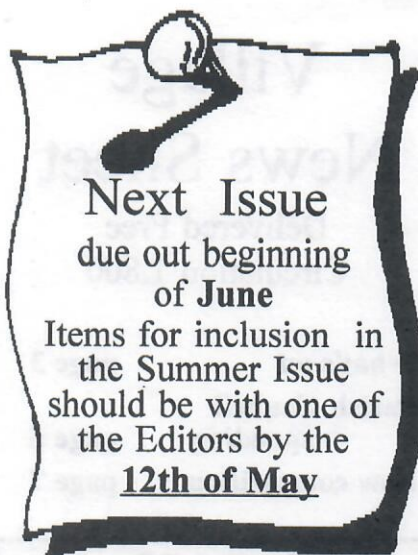
Sue Dellar, Bob Waters, and Richard Summerfield, discuss Milton's new sheltered housing scheme.



Powerful friends in the community



Eastern Group includes Eastern Electricity, Eastern Generation, Eastern Natural Gas and Eastern Power & Energy Trading



Next Issue due out beginning of June

Items for inclusion in
the Summer Issue
should be with one of
the Editors by the
12th of May

Many thanks

The editors of Milton Village View would like to express their sincere thanks to Don Wildman of The Rowans for all his willing help delivering the Village View to part of The Rowans.

Don has helped deliver the magazine now for many years and is retiring from his delivery round due to work commitments. Don also kindly delivered the magazine to the Jolly Brewers and the College of West Anglia and we are now looking for people who can help with these deliveries.

Many thanks Don

The editors

Community Care Warden Scheme

This scheme is to help elderly people in Milton who are in need of care, to live more comfortably in their homes.

If you need help, or know someone who would benefit from the scheme, phone Len Sandford 862844

Enterprise Club

The Club for active retired, average attendance thirty members. We have snooker, cards and scrabble, every body seems happy doing their own thing. There is quite a lot of laughter. We join with others on theatre outings, and are always happy to welcome new members. Tea and biscuits and raffle for 50p.

Mary Daniels

PAINTING DECORATING GLAZING

Mobile
0860 453533
Fax:
01223 863620
(local resident)



B.J. LEONARD

Edmund House Garden Service

The volunteers of the Edmund House Group of Homes are resuming the gardening service from the 1st of April. The service is free and open to the elderly or infirm living within the village, who are no longer able to cope with their own garden maintenance.

In July 1998 the group were offered the use of a large greenhouse where the volunteers are enjoying the opportunity of extending their horticultural work experience. The glasshouse is situated at Impington College and has enabled the cultivation of herbaceous perennials and container bedding plants. The plants are then sold off to help finance the project and pay for replacement compost and other materials, etc.

This season we are able to supply or refill window boxes, patio planters and hanging baskets from as little as £10.00 - for more details see our advertisement and price list.

If you would like to know more about the free gardening service, or place an order for professional filled basket and tubs, please contact Carolyn on 0403 381997 or 01223 712077.

Edmund House Group of Homes

Hanging baskets refilled

Small	£10.00
Medium	£12.00
Large	£14.00

Containers and window boxes refilled

Small	£ 4.00
Medium	£ 8.00
Large	£10.00

You supply your own tubs/window boxes/ baskets and we will fill them for you. Baskets and containers supplied at cost if needed. To place an order for professionally filled displays please phone Carolyn on 0403 381997 or 01223 712077.

BRITISH HEART FOUNDATION

CAMBRIDGE COLLEGES AND COUNTRY WALK AND FUN DAY - 20 JUNE 1999

Great family **FUN DAY** starting from 10.00am - 12.00 noon with a six mile walk from and returning to Coton Orchard, Coton for a fun packed afternoon.

- * Easy six mile circular route
- * Pleasant country walk with finest Cambridge College sights
- * Certificates for each walker, prize for highest individual fund raiser
- * Barbecue from 12.00 noon at Coton Orchard
- * Continuous event programme
- * Side shows, games, stalls

Everyone welcome, British Heart Foundation are looking for volunteers to help. Side shows, games, stalls, etc. also welcome.

Please contact Howard Taylor, BHF Representative (Tel: 01954 230644) if you can help or for further details.

Village View Delivery help urgently needed to deliver:-

THE ROWANS
230 - 300 evens 37 COPIES
295 - 363 odds 35 COPIES

Can you help?

Contact
Jane Coston Tel. 861655

Lunch Club and How it Began

The Club was launched in 1980 by Rev'd Kilner for people living on their own, space was limited as it was held in the Old Rectory dining room. The food was cooked in the Aga Cooker. Numbers then were fifteen at the most.

Audrey Ewbank prepared the vegetables, John Ewbank and John Hudson laid the tables, the members paid 40p. The Rector had a small list of friends who provided the desserts. May Bowers was one of the regulars who never missed, but somehow she was never really hungry when mince was on the menu, a real character of Milton.

To be continued. The PRIME TEAM
Do you remember these days? - write to us with your memories

Schwarzkopf

For lasting curls
style and volume with
'Natural Styling'

at
Bettys Unisex Hairdressers
Tel: 420526

MASQUERADE

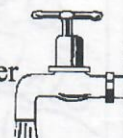
Hair & Beauty Salon
6 High Street, Milton, Cambs.
Tel. (01223) 863636
For all hair & beauty treatments

M J POTTS HEATING & PLUMBING SERVICES

300 The Rowans
Tel: 01223 440795

All Installations/Repairs
undertaken

Approved CORGI Gas
& TOTAL OIL Installer
Work Guaranteed
FREE ESTIMATES



Milton Country Park

April

Sunday 4th - Family Easter Egg Quiz

It's the return of one of our most popular events, with a 2.00pm start at the visitor centre, organised by FMCP. Adults £1.00, Under 16's - 50p.

Wednesday 7th - WATCH/YOC.

A look at trees as spring arrives, 6.30 to 8.00pm.

Members 50p, non-members £1.00.

Friday 9th - Cambridge Bird Club.

A talk on "Holme - A Birdwatchers Year" by Gary Hibberd, 8.00pm start. Non-members £1.00.

Saturday 24th - FMCP Event

A walk at Hayley Wood, a Wildlife Trust Reserve, meet in MCP car park at 1.30pm.

Sunday 25th - Conservation Work

Come and help us to monitor meadow areas for wild flower species, 10.00am to 3.00pm.

May

Sunday 2nd - Dawn Chorus

The early one, 5.00am start from the visitor centre to hear what is around on National Dawn Chorus Day, a breakfast in the centre on our return.

Booking by April 25th essential. Charge £5.00, organised by FMCP.

Friday 14th - WATCH/YOC

Off to Fowlmere for a walk round in the evening led by the Warden, Doug Radford, looking and listening for birds. Meet at 6.30pm in the reserve car park.

Sunday 23rd - Conservation Work.

Invasive shrubs can soon fill grass areas, we need your help to remove them, 10.00am to 3.00pm.

Wednesday 28th - Evening Walk.

A walk looking and listening for birds and other wildlife. Then back to the visitor centre for soup and a roll. Booking by 16th May essential. Charge £1.50, organised by FMCP.

MILTON OUTDOOR BOWLS CLUB

COLES ROAD

OPEN DAY

2PM SUNDAY 9TH MAY 1999

How would you like to learn to play the game of bowls? It is never too late or too early to take part, whatever your age.

You are invited to attend the Milton Outdoor Bowls Club Open Day at 2pm on Sunday 9th May 1999, at the Bowls Green, Coles Road Recreation Ground, Milton.

Free tuition will be given by the members and bowls will be provided, all you require is flat soled shoes or trainers.

Drinks and light refreshments will be available at no cost.

No need to book a place, just turn up on the day.

Any queries please contact Bob Waters on 860620.

Milton W.I. Programme 1999

20th April

The history of St. Johns Ambulance. Stall - Proceeds to St. Johns Ambulance. Competition

Favourite First Aid hint or tip.

18th May

Travelling Ladies by Louise Reed. Competition

One rose in a vase.



Saturday 15th May

11am - 4pm

It's a Big Top theme

Look out for our clowns and magicians!

Roll up, roll up!

East Anglia's Children's Hospice - Milton

Further details Tel: 01223 441221

Police & Councillor

Local Surgery

Friday 21st May

8.00 - 8.45pm

Milton Community Centre & Waterbeach Primary School at 7.00pm

Whist

Always the fourth Tuesday in the month with never less than 7 tables in play. Good evening with refreshments and raffle for £1.00. It is much more fun than watching T.V. especially when someone scores a grand slam of thirteen tricks, then you get your money back!!

Mary Daniels

Milton Branch Royal Air Force Association

Spring Dance

Milton Community Centre

Saturday 29th May 1999

Commencing 8pm

Dancing to

"The Billy White Band"

Tickets including Fish & Chip

Supper

£7.50 each

Available from:-

Mr. Bird, 32 Coles Road, Milton
Tel. Cambs. 514030

Millennium Calendar Event

7th January 2000 -

Day Care Centre - meal

Violin and Piano Tuition

For further details, please contact:
Fiona O'Shea B.Ed Hons (Camb.)
Tel No. 525656 (local resident).

MILTON GAS SERVICES

Eddie Kikas
29 Landbeach Road, Milton
Tel./Fax: (01223) 861810
Mobile: 0831 228181
Corgi Registration Number 161938
Servicing, Installation & Repairs to all Gas Boilers, Fires, Cookers, Central Heating Systems etc.

Nigel GODDEN AUTO SERVICES

All makes - service and repairs
CITROEN AND TOYOTA SPECIALIST
SERVICING, CAMBELTS, REPIPING, CLUTCHES, NEW CHASSIS, BRAKE OVERHAUL, WELDING, ELECTRICAL FAULTS, ABS, INJECTION SYSTEMS ETC.
CALL NOW FOR FRIENDLY ADVICE OR QUOTE

UNIT 13 CAVE IND ESTATE
FEN ROAD
CHESTERTON
CAMBRIDGE
TEL: 01223 425125 MOBILE: 0831 817981
MILTON RESIDENT

Milton Tennis Club

Why not learn to play tennis this summer? Or brush up on old skills? Starting 7th April, we meet every Wednesday evening from 6.30, junior club night is Monday from 6pm and Tuesday evening is a session with our fully qualified tennis coach. We also meet on a Sunday morning. If you would like to try your hand before committing yourself come along to our Open Day on Sunday 6th June from 2pm. For adults and juniors, beginners, improvers or experts! Our coach Peter Smith will be there to help you get started or give you advice if you already play. For more information and to book your place contact Sue Griffin Tel: 860825



MILTON TENNIS CLUB Application for Membership 1999

Name:
Address:
Tel No:
Family £30.00 Adult £15.00 Junior £6.00 - Cheque payable to Milton Tennis Club Plus £5.00 deposit for a key to the courts (£2.00 deposit for juniors)
Signed:
Please return to: Roger Barham, 31 Shirley Close, Milton
For more information telephone Roger Barham 860068 or Sue Griffin 860825

Milton School

During a recent non-fiction day children in year one wrote about things they had learned from books. Also the children in class 10 have been debating whether Milton should have a BMX track, a roller blade rink or a basketball court.

Why there should be a Rollerblading rink in Milton

I think that Milton should have a rollerblading rink because there are not a lot of activities in Milton for children to do, whenever they want. We also in the holidays / half terms are usually hanging about near the roads and there could be some serious accidents, which we don't want to happen.

Secondly, not just only children can participate, adults can too and you can learn to rollerblade from a very early age. Furthermore when children rollerblade on the streets the pavements are unsuitable to blade on because there are drains which you can get your rollerblades stuck down and fall over.

In spite of the possible difficulties of noise and disturbance to residents, I believe that it is still a very good idea to occupy children in this way.

In support of my arguments, another point is that the housing agents will make a lot more money because more people will want to buy the houses if there is a lot of things the children can do.

In view of these arguments people who rollerblade put candle wax on the kerbs so that they can go up them, people could slip down on them if they were walking somewhere and get hurt.

In conclusion, my proposal is that we should definitely build a rollerblading rink as soon as possible.

Molly Freeman Class 10

Why there should be a Basketball court in Milton

I think that Milton should have a basketball court. There are many reasons for this.

Firstly, there is nowhere to play publicly and there is nowhere in Milton with nets. The nearest is in Waterbeach.

Secondly, you can't play proper basketball with just a ball you need the nets.

Furthermore, you can loose your ball on roads and you could cause an accident but with bikes and roller blades you can't do that.

In spite of the possible difficulties of vandalism, inconvenience of nearby residents. I believe that if you were playing against a wall and you throw it and it hits someone elses property and broke something you would be in big trouble, you would have to pay for the damage.

In conclusion, my proposal is a Basketball court that can be used publicly.

Michael Vickery Class 10

Eric Franklin trading as **Pete's Quality Meats**

1a Arbury Road, Cambridge
Tel. 01223 352853

Suppliers of first class pork, lamb, beef, poultry and game

HIGH WELFARE AND FREE RANGE PRODUCTS A SPECIALITY

FREE delivery in Milton
Hand made sausages and burgers

B-B-Q packs, freezer packs, mixed grills made to order

SPECIAL OFFERS AVAILABLE
Tel: Eric 01223 352853

My book is about the world I found out that the wind blows the clouds and the wind blows all around the world.

The same wind that ruffles your hair may have ruffled the fur on a polar bear in the arctic.

Gemma Tilley Class 4a

Why there should be a BMX track in Milton

I think Milton should build a new BMX Biking Bowl. There are many reasons for this. Firstly, there is nowhere to go and it is dangerous doing stunts on busy roads. Secondly a childs bike could easily get a puncture. Furthermore there is no BMX biking near Milton. In spite of the possible difficulties of noise I believe that it seems the nearest biking bowl is in the Abbey. I think Milton should build a biking bowl.

In support of my argument, another point is that the track in Abbey is too dirty and your tyre might get stuck in the mud.

In view of these arguments I think that Milton should build a BMX biking bowl. In conclusion, my proposal is that Milton should build a BMX biking bowl.

Thomas Seymour Class 10

MILTON POST OFFICE

CARDS	SHOE REPAIRS
CONFECTIONARY	PHOTO COPYING
DRY CLEANING	FAX SERVICE
STATIONERY	GIFTS

2 COLES ROAD MILTON

Open: Mon - Fri 9.00am. to 5.30pm.
Saturday 9.00am. to 1.00pm.

Painter & Decorator Interior & Exterior High Class Decorating Free Estimates

R.P. Kent

Tel. 01223

860995



MILTON WINDOWS

Quality costs no more

PVCu windows, doors, cladding & conservatories

Telephone 01223 440376

Spring in the Park.

National Nest Box Week, as usual, began on Valentines Day and in Milton Country Park we began a week long project to provide new homes for birds in the area. Inclement weather forced the volunteers inside, but on the first day there was no lack of budding carpenters determined to show their skills. The 'Friends' decided that there would be a choice of boxes, slightly different in design, hoping to attract tits, robins or wrens.

Whilst thinking about the birds, why not come along to the Park on Sunday 2nd May for a Dawn Chorus Walk. I know its early, 5.00 am start, but after the walk a breakfast is provided in the Visitor Centre. The cost is £5.00 per person, and your place must be booked by 25th April. If you don't think you can make the early performance, then how about an evening walk? This will be on 26th May, charge of £1.50 to include soup and a roll afterwards. Booking by 16th May. For further information and booking please contact the Rangers, 420060.

Tim Siggs Chairman of the 'Friends'

Cottenham Village College

Summer School

August 9th -13th 1999

We are holding our summer school again this year with nineteen different courses. These include a wide variety of art and craft courses, local history, military aviation, computing, bridge, Tai Chi and walking. The tutors are first class, the catering is excellent and the atmosphere friendly but purposeful. It's an ideal way to meet other people and to extend your skills.

For further information ring the Village College for a brochure. Tel. 01954 288944

Women's Institute

March is our A.G.M. when we invite members to come on committee. We have lost one member on committee through moving away, we are lucky in the fact that we never have to pressurise anyone. We try to please everyone by having interesting speakers but what one likes another one doesn't, so we have to accept that. There is always a welcome for visitors or new members.

Mary Daniels

How does Milton Parish Council spend your money?

Milton Parish Council is committed to following the principle of 'Best Value' i.e.

"delivering the best service possible to all the inhabitants of Milton in the most cost-effective, efficient way".

If you look at your Council Tax demand from South Cambs District Council (SCDC) you will see an item for Milton. This is the amount that you will pay to cover Milton Parish Council's expenditure for the year. In 1998/99 the total expenditure of the Council was £78,473 and £61,000 of this was raised through Council Tax. Note that £3,000 was allocated to millennium projects but has not yet been spent. The pie chart on the right (top) shows in broad terms where this money was spent. Total income, including bank interest and various fees, was £87,000.

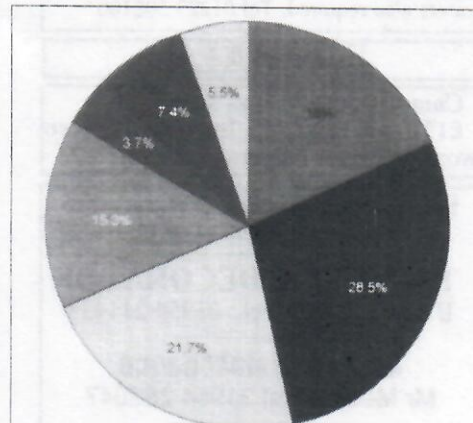
The Parish Council has budgeted for a total expenditure of £76,550 for 1999/2000 and has asked SCDC for a rate precept of £62,000. For a Band D house this equates to £38.56 on the Council Tax bill. The pie chart on the right (bottom) shows where the Council expects to spend the money.

Projects under consideration at present (but not detailed in the budget figures) include a community transport scheme and improvements to the facilities for the 7 - 18 age group eg BMX track and areas for roller hockey and basketball. £140,000 was received in 1997/98 for the sale of recreation land for sheltered housing. It is hoped to spend this money on recreation/leisure facilities, possibly on the two recreation grounds. An improved car park with lighting at The Sycamores Recreation Ground has been suggested. Do you have any suggestions as to how this money should be spent? On millennium projects perhaps? If so contact the clerk on 861447 or preferably in writing.

The Parish Council is also actively looking for more land for sports use, especially for football pitches for the colts. If you know of any land up to 20 acres that may be available please contact the clerk.

Expenditure 1998/99

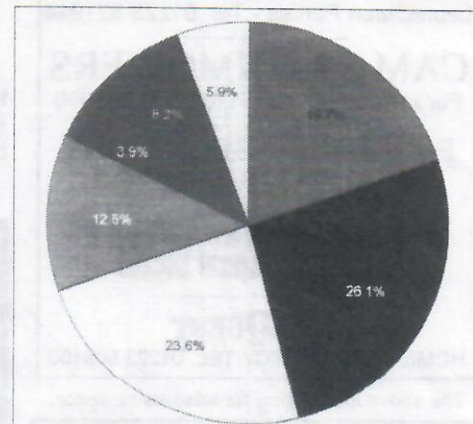
Administration	14843
Community Centre Grant & Recreation Grounds	23186
Community Centre - Loan Repayment	17665
Maintenance - Grass Cutting/Allotments etc	12480
Millennium (committed, not yet spent)	3000
Provision for Elderly	6058
Provision for Under 18's	4441
Total	81473



Administration	18%
Community Centre Grant & Recreation Grounds	28.5%
Community Centre - Loan Repayment	21.7%
Maintenance - Grass Cutting/Allotments etc	15.3%
Millennium (committed, not yet spent)	3.7%
Provision for Elderly	7.4%
Provision for Under 18's	5.5%

Budget 1999/2000

Administration	15100
Community Centre Grant & Recreation Grounds	20000
Community Centre - Loan Repayment	18100
Maintenance - Grass Cutting/Allotments etc	9550
Millennium	3000
Provision for Elderly	6300
Provision for Under 18's	4500
Total	76550



Administration	19.7%
Community Centre Grant & Recreation Grounds	26.1%
Community Centre - Loan Repayment	23.6%
Maintenance - Grass Cutting/Allotments etc	12.5%
Millennium	3.9%
Provision for Elderly	8.2%
Provision for Under 18's	5.9%

M.J. BLACK

Carpentry & Joinery
Fitted Kitchen Specialists
complete service from
Planning to Installation

Tel. (01223) 277772

Mobile 0831 626398

R B

Electrical

Your Milton
Domestic and
Industrial Specialists

Tel. 365200

PRODUCTS THAT COMMUNICATE

Advertise effectively with products to build your business, promote your brand, or simply make people remember you.

ALL BUSINESS GIFTS • MOUSE MATS • PENS
PVC BINDERS • WALLETS • FOLDERS
P.O.S. & DISPLAY HOLDER • PLASTIC CARDS
EXHIBITION ITEMS • CLOTHING

Osiran Speciality Advertising

Tel: 01223 425750 Fax: 01223 426576

The Burleigh Suite, Burleigh Business Centre,
52 Burleigh Street, Cambridge, CB1 1DJ, England

PRODUCTS THAT COMMUNICATE

VACACIES

CAREQUEST HOME CARE AGENCY

NEW CARERS ALWAYS WANTED
We will train you for a really rewarding and flexible job. We are looking for part-time carers, 10 - 30 hours per week. Live in carers also required. Tel 01223 508100

FOR SALE

Computer for sale as seen
£150 Tel. 861655 for details, also word processor - offers over £25

BRICKLAYING/BUILDING CONTRACTORS FOSTER & CARBIS Tel. 863275

PAINTER & DECORATOR DAVID PECK Tel.: 01954 211428

Garden Maintenance

Mr Medlow Tel 01954 252047

Peacock Travel, Executive Coaches
Day Trips, Short breaks Tel. 811481

ADMINISTRATION & SECRETARIAL SERVICE
Angela Ostler Tel. 01223 861445

Building Consultant

Paul S. Seaman Tel. 01223 563530

Aerobic Dance in Milton
From 15th Jan '99 Tel. 01223 504489

THEMED CHILDREN'S PARTIES
Leprechaun Parties - Tel. 01223 521944

CAM LAWNMOWERS
For repairs Tel. Milton (01223) 863690

FREELANCE SECRETARY
Tel. 01223 441107

Drainage & Groundwork Contractor
C H LUMB Tel. (01223) 354402

CAREQUEST
HOME CARE AGENCY TEL. 01223 508100

The above are waiting for advertising space.

* QUALITY GIFTS * FANCY GOODS *
TOYS * HOUSEHOLD PLANTS *
* CUT FLOWERS *



IZZIE'S

01223 501601
8 High Street, Milton



Lizzie's WorkOut Look New Classes !!!

Introduce a new member &
receive a 1/2 price class voucher

Monday : Thighs, Bums & Tums 6.45 pm
The Intense Body Firming WorkOut 7.30 pm

Wednesday: Beginners/Intermediate Step 7.00 pm

*Please ring and book your place.

Weights & Steps provided. Just bring a mat, towel & drink
Classes held at:
Milton Primary School, Humphries Way, Milton, Cambridge.

For further details call: Liz Ward on 01638 721318



All Saints Church Milton

MAUNDY THURSDAY
Thurs 1st April
8 pm - Holy Communion
Commemoration of the last Supper in the hall.

GOOD FRIDAY
Fri 2nd April
1pm - Prayer Walk around the village
2-3pm - Hour at the Cross
3 pm - Special Starting Blocks service
7pm - Family Service

EASTER EVE
Sat 3rd April
5 pm - Service of Baptism and
Renewal of vows and lighting of the
Easter candle

EASTER DAY
Sun 4th April
8.00 am Holy Communion BCP
10.30 am Family Holy Communion
with admission of children
6.30 pm Easter Praise



NEW APOSTOLIC CHURCH

Times of Services:

Sunday 10.30 am
Sunday School 9.00 am
Wednesday 20.00 pm

For special events please see notice
board or for information call the Rector,
Kevin Heynes, on (01223) 440329 or
<http://www.nak.org>

50th (Cambridge & Landbeach)
Scouts

Marquee hire

Marquee size 20 feet by 40 feet
(an area of 34 feet by 54 feet is
required to accommodate the ropes)
£150.00 for the first two nights plus
£15.00 for each additional night.
(Price includes delivery erection
dismantling & collection)
Telephone Bob on (01223) 514332

**Clean Quality Workmanship
from Planning to Completion.**
FREE ESTIMATES & ADVICE



BUILDING
CONTRACTOR
86 Butt Lane
Milton

- New Houses
- Extensions
- Renovations
- Conservatories
- Loft Conversions
- UPVC Windows & Doors

TELEPHONE: 01223 440126

LANDBEACH AND MILTON BAPTIST CHURCH

We warmly invite you to worship at the
church, which is located at the Milton
end of Landbeach High Street, just
across the A10.

Services are held weekly at 10.30 am on
Sundays, when there is also Sunday
School for children. Also at 6.30 pm
A number of homegroups meet during
the week, including one in Milton.

Easter Sunday, 4th April.
Come and celebrate,
Celebration Communion Service at 10.30
am
"Easter Praise" at 6.30 pm

Children's Club
On Tuesday 30th March the
"Storykeeper's",
5 - 11 year olds, meet at the church
From 6.30-7.30 pm
(20p)

Further details readily available from
Sheila (440395)
Malcolm (513567)

Notice

Milton Village View is unable to check or verify the
warranties, authenticity of or representations made
by their advertisers and must therefore exclude
liability howsoever arising from any advertisements
in this newspaper. Nor do any statements
necessarily accord with the opinions or beliefs of
the Editors, Milton Parish Council or Milton Village
View.

ALMOND INDEPENDENT

INDEPENDENT FINANCIAL ADVISERS

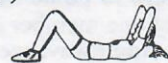
Chris Almond

MLIA(dip)
FINANCIAL ADVISER

A MEMBER OF DBS FINANCIAL MANAGEMENT PLC
Regulated by the F.I.A.

Tel. 01223 440715 FAX. 01223 502510

Julie's Legs, Bums & Tums Workout



Mondays Milton Community Centre
7.00 - 8.00pm Coles Road, Milton
Wednesdays Waterbeach Community Primary
7.00 - 8.00pm School Gym, High Street, Waterbeach
Remember to bring a mat, towel and a drink with you.

RSA/YMCA Qualified Instructor
Member of The Exercise Association
Tel: Julie 01223 441036 or 0411 569641

HOWARDS WAY

DOT.ADI.CAADI.DIA.

- * Excellent Pass Rate
- * Top Grade Instructor
- * Free Lesson / Discounts
- * Refresher Courses
- * Motorway / Dual
Carriageway Tuition

Tel. (01223) 862501
(0589) 218045

193 The Rowans, Milton, Cambridge.

Puzzle Corner

All the entries for the puzzle in issue 36 correctly found the word.
The answer was

B est	B old
A ide	A ims
D ock	D ime
G ong	G ain
E arn	E ast
R ace	R ust
S ell	S ave

Thus giving BADGERS as the new word.

The first prize was won by Margaret Deer of Knights Way and second prize by Ruth Overall of Old School Lane. Congratulations to both prize winners and the first prize was generously donated by **KARENS HAIR STUDIO**.

The puzzle this time involves six anagrams.

You should rearrange the letters on the left in the diagram to form new words which answer the clues. Enter these new words in the grid on the right. When correctly answered the name of something not a million miles away will be revealed when you read down the first column.

ANAGRAMS	CLUES	ANSWERS
INTERMAT	DISCIPLINARIAN	
GUILDEN	GRATIFY	
TENNIEL	MILD	
ROPED TO	WEAPON	
EVER SOB	NOTE	
TEAR RAN	TELL	

Send the answers to the anagrams together with the word formed when reading down the first column to Michael Spooner 43a Old School Lane, Milton, Cambridge CB4 6BS by 5th May.

The first correct answer out of the hat will win £10 and the second will win £5. The prizes this issue have been generously donated by **Benet Garage, Milton**.

M Spooner

Cycle Schemes

Two new options have been discussed by the Parish Council. Option C allowed for a cycle lane on the carriageway on the eastern side of High Street from Fen Road towards the shops. Option D allowed for a dual use path along this section. Because of the difficulties of providing for cycling positively in front of the shops it was intended to calm the traffic at either end and provide for parking. It was intended also to remove the three pedestrian refuges but narrow the carriageway near the Apostolic Church to help pedestrians cross. A zebra crossing has been suggested for this area. The bus stop would possibly need to be relocated.

The plans would be put before the joint area (South Cambs/County Council) meeting of June.

Extracts from the minutes of Milton Parish Council Feb-Mar 1999

Application by Hospice to build extra facilities

Council objected unanimously to this application on the following grounds:-

The increase in car parking does not match the potential increase in usage of the site.

The proposed car parking and road on the front lawn would change the character of the frontage of the old rectory - a listed building within a conservation area.

If the application is granted then an agreement should be entered into that:-

the training facilities should be reserved for the purposes of the East Anglian Children's Hospices (EACH) or similar and not hired out for commercial/business use;

a condition should be imposed restricting future use of the whole premises to the EACH or similar and not commercial/business use;

there should be no further development on this site.

Application by College of West Anglia - improvements to site and some residential housing

Comments by Council:-

A Section 106 agreement should be entered into with the developer in co-operation with the College of West Anglia specifically for the provision of a cycle/foot path from the main entrance in High Street along the boundary of the college as far as the "old" disused Landbeach Road so that this could link up with any future cycle/foot path to Landbeach and beyond.

The joint arrangements between the college and the County Council for access by the local community to the college's Information Technology Centre welcomed.

Concerned that the car parking - together with disabled parking - is insufficient.

Concerned about the potential hazards caused by the position of the access to the proposed residential development on the bend in Landbeach Road and in close proximity to the bus stop.

Section 5.8 page 15 of the Strategic Development Plan concerning the proposal for a Section 106 Agreement to prevent further residential development should be taken up.

Crime Update

The South Cambs Audit for 1998 showed Milton as top of the recorded crimes with 303 crimes. This, however, included Cambridge Regional College, Tesco and the Science Park.

In February 1999, however, three crimes were reported two at Tesco and one at Dillons

Millennium

Cut off date for applications for millennium money has been set for 21 June. MPC to decide allocation of grants at its July meeting.

VACUUM CLEANER SERVICE & REPAIR



Brian Honey
44 Denny End Road
Waterbeach
Tel.: 01223 861708
evenings and week-ends

FREE ESTIMATES
LOCAL COLLECTION

KATHY PLATT

Dip.(Adl) Counselling

QUALIFIED COUNSELLOR

dealing with
depression, stress, bereavement, personal
and relationship problems.

For more information about how counselling
could help you or to make an appointment,
please contact me on:-

01223 861510
MILTON

DENNIS COUSINS

CARPENTER
& JOINER



EXTENSIONS
FITTED KITCHENS
ALTERATIONS
IMPROVEMENTS
CUSTOM JOINERY

23 GODING WAY
MILTON
CAMBS CB4 6AH
TEL: (01223) 560657

Spaceships or Bicycles

Looking back over this century

At the beginning of this century a bicycle shop, owned by the Starling family was situated near Willow Crescent. There were also stables nearby at the Jolly Brewers and a Smithy in the area of our village sign. Then, as the car became more popular, a petrol pump was put up nearby. In 1933 Benet Garage was opened. As time passed a new set of petrol pumps replaced the old ones and business boomed. Then Tesco was built and the old competed for sales with the new and eventually Benet Garage stopped selling petrol leaving the petrol sales to Tesco. For a while Tesco opened their station 24 hours a day but they have recently reverted to closing at midnight. With petrol prices rising and the cost of running a car increasing it leaves me wondering what is going to be next?

Are we about to enter a new era and what will that be? Will it be electric cars or some other futuristic form of transport or are we going to be making more use of our cycles once again?

What do you think? All this has happened in the last 100 years.

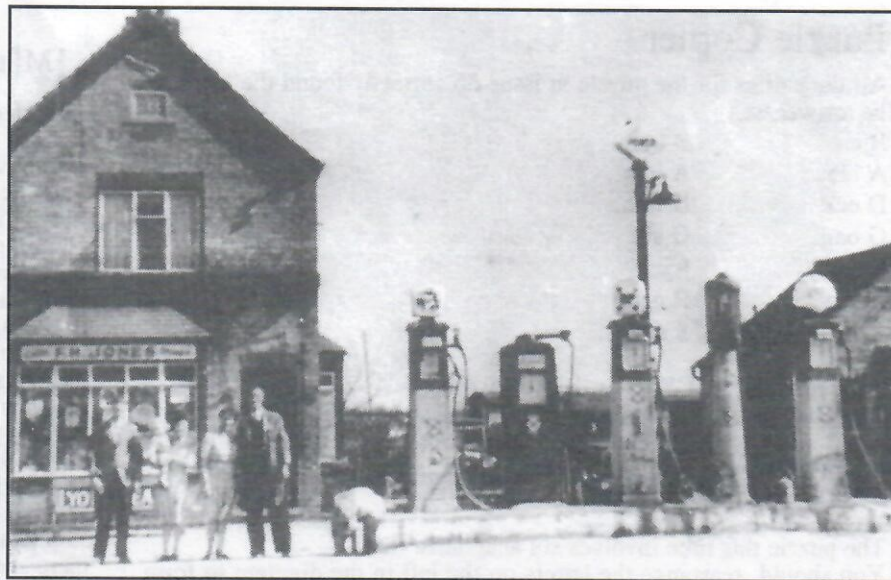
When I bought my bike 21 years ago it cost me £115 - over five weeks pay for me! In contrast I have recently seen new cycles for sale at £70!

When did you first buy a bike and how much did it cost you? Did you buy one locally and was it shared with the rest of the family? What distances did you travel by bike and where did you go?

Send us your stories of what changes you have seen in Milton this century. Perhaps you could tell us about the village shops and how they have changed or even how medical and midwife support worked in the village.

Jane Coston

PS. Benet Garage's advert has just changed. For the past seven years they had kept their costs for certain services in their advert the same! - Is this a record?



Benet Garage in 1948

(Does anyone remember this - is it a railway carriage at the back?)



Benet Garage 1999



Tesco Garage 1999

BENET GARAGE MILTON

Opening times:- Monday to Friday, 8.30am to 5.30pm, Saturday 8.30am to 12.30pm

**BOSCH
SERVICE
AGENT**

TEL. 420380

**TYRESAVE
CENTRE**

M.O.T. TESTS WHILE YOU WAIT

BY APPOINTMENT

Ask about our unleaded conversion package

Lubricare 1 Service
Change oil & filter
Check fluid levels tyres and lights
£15 labour

Full Service
& Engine Tune
£60 labour

Lubricare 2 Service
As lube 1 plus fit new plugs and
check all brakes
£35 labour

Bottled Gas Stockist

All prices plus parts and VAT

All Major Cards Accepted

Printed by Cambridge Evening News, Winship Road, Milton, Cambridge, CB4 6PP
Produced and delivered by volunteers. Designed and published by Jane Coston, 67 Coles Road Milton Tel. 861655
Editors - Michael Spooner, Kate Marshall, Harry Capitain.