

Milton Village View

Quarterly News Sheet

Delivered free
throughout the
village

Circulation of over 1,700

Summer Issue - June 1992

Issue 3

A Sign Of The Times

Three cheers and hip-hip hurray,
The village sign went up today,
Now some find it obtuse, ney fey,
Old stagers feel it should go away!
Ten years or more I think it be,
To create a slice of stormy history,
Its taken a while and a day,
To put it up without much pay,
The Parish Council scratched its head,
Through many ups and downs its said,
The idea from a learned tread,
Faltered when its champion fled-
This mortal coil, alas when dead,

A dovecote project came to grief,
When the designer sought relief,
And then came much deliberation,
For Baitsbite Lock to shun the nation!
Not everyone likes the theme
Of old-new views now seen,
Many just shout and scream
A nightmare from a pleasant dream,
How could such a peaceful vision,
Impel them to rabid derision,
They can't quite grasp the mood of change
Caught in this chunky double image,
A symbol of Milton past and present,
But always a favourite haunt in essence,

The sign should speak to all,
Young or old, short or tall;
Others may see a wealth of meaning
In the different-sided painting,
Still more will groan of money spent,
Though charity helped in the event,
Stout volunteers have done their bit
To ensure we have a sign to fit,
Sited where there was a pond,
Its one of which we could grow fond,
Nothing stilted or fancy-free,
Just simple plaques for you and me,
Once more I say "Hip, hip hurray."

David Waterson



Sunday
12th July



The original 1982
Dovecote idea
to be produced by
John & Gaye Holder

Is This a Record?

In 1953 the Parish Council decided to provide a seat near the railway crossing in Fen Road. In 1954 the seat was purchased but it was not till 1957 that it was finally installed only to be uprooted by vandals that same evening, so maybe ten years to put up a village sign (which after all is a much bigger project and has over the years involved many people with very varied views,) is not too bad. Without the perseverance of Len Sanford backed by the Parish Council I doubt if we would have seen it yet!

The original sign was to be a dovecote with portraits of men who had been very involved in the village. There were objections that only men were to be portrayed. Eventually the idea of the dovecote was dropped due to rising costs and the sudden death of Ken Humphries, who was the village historian working on the details. The Parish Council then asked for ideas. It was suggested that Baitsbite Lock could be the basis of the sign depicting the old along with the new. John Waterson a village artist was commissioned to paint the sign and Len Sandford volunteered his carpentry skills, finally resulting in the sign being erected on March 28th this year.

Maybe now villagers will understand why they should look at the sign and appreciate all the effort, similarly have a look at the seat by the crossing.

P.S. If you have an idea for a village project the Parish Council eagerly await, but remember to think well ahead.

JC



The village sign depicting the old and the new at Baitsbite Lock. The old lock gates were removed in 1989 to make way for the new guillotine type.

Village Sign Plaques

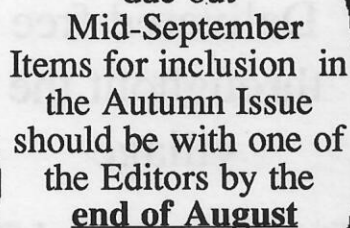
A brief explanation-

In 1954 Dr Whitmore was asked to set up a surgery in Milton. This he did and his work in the community was very much appreciated, so when he was killed in a very tragic accident in 1988 the people of the village were moved to make a collection. This collection was then given to the Parish Council towards a memorial on the village sign.

Ken Humphries worked on the ideas for the dovecot with his vast knowledge of the village and his work as Parish and District Councillor and Parish Clerk.

Cambridge
Evening News
The Voice of Mid-Anglia

Now we are neighbours
we're delighted to
print your village newsletter



Mary Daniels

H Smith

Stalls - Mrs Heath Tel. 860664 Arena Events - Mrs Wilson Tel. 862288
General Enquiries - Mr Davis Tel. 862463

Mary Daniels

For all your Heating and
Plumbing requirements from
minor repairs to installations
contact

M J POTTS
Heating & Plumbing
Services
Milton Cambridge
Tel. 0223 440795

Work Gauranteed
Free Estimates

Approved CORGI
Gas Installer

Milton Play Group
Garage Sale
 Saturday, 6th June 10 - 4
 at 83 Coles Rd
 Bric-a-brac, plants, toys,
 furniture, etc..

Forthcoming Events

Milton Primary School
Ceilidh
 July 4th
 at
 The Community Centre



Milton Village Fayre

Sunday 12th July

Coles Road Rec.



Bouncy
Castle

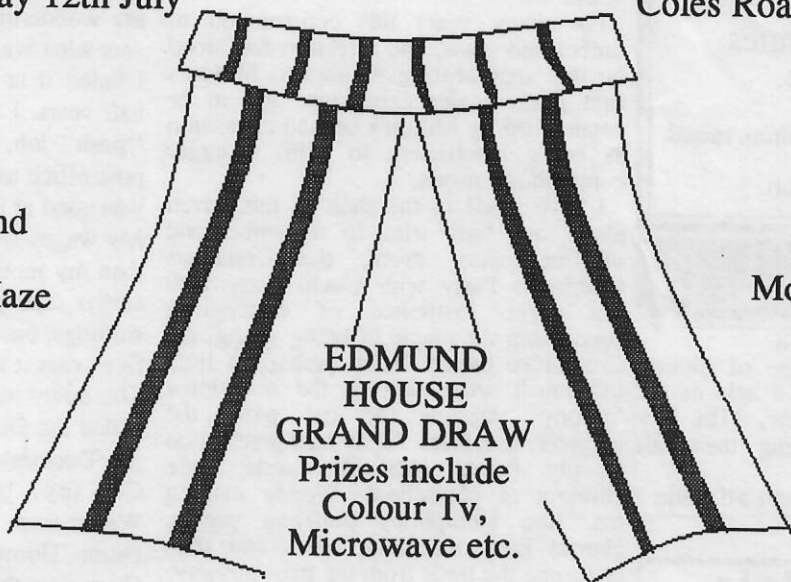
Velcro
Bar - Fly

Ball Pond
&
Tunnel Maze

Milton
Morris Men

Quad
Bikes

Arena
Displays



EDMUND
HOUSE
GRAND DRAW
Prizes include
Colour Tv,
Microwave etc.

Licenced bar, Bistro, Hot and Cold Food
Stalls and Activities for all

WALK TO HELP THE HOSPICE!

The Friends of the Children's Hospice are organising a sponsored walk
 on **SUNDAY, 14TH JUNE**

There will be four different routes of varying distances from 1 to 2 miles up to 15 miles to cater for all ages and abilities of walkers and the time available to them.

All walks will start at the Milton Community Centre.
 Sponsorship forms and further details are available from
 The Friends' Shop Tel. 860306 or

Pauline & Bob Waters at 3 Lyndhurst Close, Milton.
 Telephone 860620.

Do come along and enjoy the local countryside with your family and friends,
 as well as helping the Children's Hospice.

All Saints Church

Summer Fete

Saturday, 27th June

in the Rectory Gardens, followed by a
Bar-B-Q and Barn Dance
 in the Church Hall

The church will be decorated for the weekend.
Theme - Country Living



Country Park

GUIDED WALKS

21 June at 3pm.
Petal Power

2 August at 3pm.
Whose Leaf am I?

13 September at 2.30pm.
Natures Harvest

Meeting place for
 All Events

Milton Community Centre
 Coles Road Rec.
 unless otherwise stated.

WORK PARTIES

4 October at 9.30am.
Woodland Work

WATCH EVENTS

Children's activities
 A small charge will be made.
 Contact the Ranger
 for details. Tel. 440195

28 June 2.30 pm.
Walk on the Sensory Side

26 July 2.30 pm
Riverwatch

At Car Park
 Cam River end of Fen Road

20 September 2.30pm
Bird Games

THE LONDON MARATHON

Congratulations

to

Stephen Gillson

who completed the Marathon in
2 hours 53 minutes

and to

George Kyle

who finished in
2 hours 56 minutes.

Well Done.

Both men, who live in Milton, raised
money for
Cancer Research.

Marriages

Adamson - Safa

To Celebrate the marriage of Sharon
and Ufuk a blessing will be held at All
Saints Church on Saturday, 11th July
1992 at 1.30 pm. Wishing them all
happiness for the future,

Love always Mum, Dad and Michelle

Betty's Hair Fashions

are proud to introduce a
superb range of perms in the

JOICO INTERNATIONAL "Waves Series"



Tetra S.T.A.R. - A self adjusting acid
wave, giving the best of both worlds,
leaving hair at its best even after the
perm and optimum curl formation.

Solar System - Low temperature
waving lotion- excellent for long lasting
curls and hair that's difficult to perm.

Sine Wave - Non alkaline perm for fine
limp hair, tinted and hi-lighted hair,
leaves your hair with shine and curls
that flow with movement.

JOICO believe the ultimate perm is
one that leaves your hair in optimum
health, feeling natural and easy for you
to style.

Special offers on these perms
exclusively at

 **Betty's Hair Fashions,** 
Cambridge Rd.
Tel. 420526.

A PARISH FRIEND

A-k-el-a-we-will-do-our-best.

The horseshoe of Cub Scouts smartly to
the alert, even young Draper for one
glorious moment was quiet, a solemn but
happy moment, the last Grand Howl in
the old Milton Village Hall, the previous
week saw the last Cub Scout Investiture
in 'The Hall'. James stood slightly
nervous in the same spot as literally
dozens of Cubs before him, not only to
become a member of The Worldwide
Brotherhood of Scouting, but also a
citizen of Milton, an undoubtedly proud
boast.

For many years this construction of
timber and glass, and affection has stood
on this spot bearing witness to Milton's
first really major expansion, and to be
condemned by Milton's second expansion
as being insufficient to fulfil a larger
communities needs.

I have stood in the shell of this haven
alone, and have tried to remember and
imagine every event, the Christmas
Children's Party with Uncle Tony with
his sheer brilliance of conception
concerning the magic of being young, the
Committee dances when perhaps a little
too much wine flowed, the occasional
'moony' through the car park, the
laughter, streamers, funny hats perched on
equally funny 11.30'ish heads, little
children at playschool, Wendy making
tea, Ken Humphries shuffling papers,
Harold Easy forgetting notes and then
charming the birds from the trees anyway.

The meetings serious and controversial,
the Presentations to faithful servants, the
melted ice cream at Summer Fayre, the
frozen trifle at Christmas - you name it -
it has happened here. Where? In Milton
Village Hall naturally, the basic hallmark
of our community, that funny looking
building on the edge of the rec.

I, for one of many will mourn its
closing because its passing takes a little
of us all. We give thanks for its
successor, but we still look towards the
Coles Road end of the Rec and say Thank
You Village Hall you were part of us, as
we were part of you.

RCN

DRAINS UNBLOCKED NEW DRAINAGE WORK ALL GROUND WORK AND BUILDING WORK UNDERTAKEN

C.H.LUMB TEL.0223 354402

Painter & Decorator Interior & Exterior High Class Decorating Free Estimates

R.P. Kent

Tel. 0223

860995



Many Thanks

To everyone who contributed towards
the door to door collection in aid of
Dawn Wicks and Laura Peltier going to
Disney World, Florida with the Spastics
Society in October.

£433 was raised

J Wicks

MY FIRST JOB

My first job started when I was bundled
off into service at the age of 14 years
and 2 weeks. Service!! What is that you
are wondering? Well, I will tell you, I
was what was known as the housemaid,
I hated it at first, but stayed ten and a
half years. I had high hopes of having a
"posh" job, such as a shop assistant or
post office assistant, because I fancied I
was good at figures.

My wages were only £4.00 a year more
than my mother had started on 36 years
earlier, and apart from a bonus of ten
shillings, once every three months. After
five years it was still £1-6-9 per month.

The bonus was for collecting what was
called the Dis' club for people unable to
pay Doctors' bills, this was before NHS.
On my bike I pedalled round
Waterbeach, Landbeach, Milton, Fen
Ditton, Horningsea, Waterbeach Fen and
Chittering this had to be completed in
two days, I got into trouble if I had not
got it all in!

I had my 21st birthday party in the
British Legion Hall, this was quite
something during war years, with
rationing, no iced cakes in those days!

Although I felt I had a hard life, it
probably did me a lot of good, it taught
me the value of money and how to say
no to things I could not afford and could
manage without. I can still say no to
some things, but if anybody wants a
cake or pavlova I say yes!! M Daniels

Contributions for our news sheet are
always welcome.

Please try to keep within 100 words and
no more than 200.

Thankyou for your support. JC

ALAN LANGLEY CHARTERED BUILDING SURVEYOR

Architectural Design,
Planning/Building
Regulation Applications,
Supervision,
Building Surveys and
Reports.
TEL. 440525 (Milton)

Census

Dear Sir,

Regarding the article on the Census in the first edition of the newsletter, you refer to the 1891 Census, and say that there were six pubs listed, but one is unaccounted for; the others being the Three Tuns, Greyhound, Jolly Brewers, Lion & Lamb and White Horse.

The other was probably the Waggon & Horses for although the present building is modern (1930's) there was a pub on that site so I am told. The late Ken Humphries giving a talk on old Milton informed us that there was another pub next door to the Waggon & Horses. Could this have been the mysterious Greyhound to which the Census refers?

I have also heard that Queen Anne Lodge was a pub once, but I do not know the name, perhaps it predates the 1891 Census and that is why it is not mentioned. It would be interesting to know if it appears in an earlier one.

The Lion & Lamb used to be called the Lamb & Fleece and is the oldest pub in Milton.

Yours sincerely R Adams, 2 Milton Court

A SECRET GARDEN

Milton Churchgoers, and others for that matter, may now have at least partial access to a secret garden created by one of the greatest figures in the development of English country estates.

Mystified? Go round the back of the church and look at the iron railings which divide Milton Hall, the Church and Hospice grounds.

The gate apparently made an unheralded debut last Autumn and is concerned with the close relationship between the Hospice and the Hall, making mutual interchange much simpler.

It also provides access to a belt of woodland and what is variously known by the intelligentsia as the River Clytumnus for those with a classical bent and as the New River by the hoi polloi.

The woodland was part of a once delightful landscaped garden laid out in the Hall grounds in the eighteenth century by Humphrey Repton, who is also reputed to have designed the distinctive gate which used to be at the head of the drive to the Old Rectory before it became the Hospice.

At one time there was a path through the woodland strip by the river, still swampy but a shadow of its former self; there is also reputed to be traces of an old boathouse.

However, much of the woodland is now impenetrable, especially at the height of summer, and it probably never enjoyed general public access, although older residents can recall going to feasts and fetes in the grounds.

The history of the present Hall, which succeeded the former Manor sited down towards the Fen Road plantation, goes back about 250 years.

Rain interrupted a tentative exploration of the path the other day, but there have been vague whispers that Eastern Electricity is considering developing a mini-path network on the land and maybe the gate is the first step towards that goal.

The village is desperately short of footpaths, although the tracks through the Country Park now go some way to compensate for this deficiency. At least it is now luckier than many other villages in the area with the two main paths it has, having a particular historical and environmental interest.

Anyone who can shed light on the gate is welcome to do so.

D Waterson

NEWS FROM 100 YEARS AGO

A popular newspaper in 1892 was 'The Cambridge Chronicle and University Journal, The Isle of Ely Herald and Huntingdonshire Gazette'. (This is the longest title for a newspaper I have come across!)

DR Scotts Pills
Cure
Indigestion
Flatulence
Lassitude &
Want of Tone
In a square
Green Package
Sold
everywhere
Contains no
mercury

Some reports in the paper about Milton give a flavour of village life in those days - and some of the advertisements reflect a bygone age.

8 January 1892
Agricultural
Botany at
MILTON

"We have had the second lecture of the proposed course. It passed off far more successfully than the first, owing to the numerous and interesting questions which followed after the meeting. Mr Ellis was quite equal to the emergency and readily gave a reason to anxious enquirers who were themselves personally interested in the proceedings of the evening. The third lecture is to be delivered this Friday evening."

M Spooner

Orient Line
Passage to Australia
Newzealand & Tasmania
From London
via Naples, Albany,
Adelaide & Sidney

Calling at Columbia with Her Majesty's Mail
and taking all passengers to Australia

Fares from £17-17-0 to £70

Includes victualling,
bedding and cabin requisites.

M.J. BLACK

Carpentry & Joinery
Fitted Kitchen Specialists
complete service from
Planning to Installation

Tel. 861205 1 Butt Lane

R B *Electrical*

Your Milton
Domestic and
Industrial Specialists

Tel. 861869

++++++
+ **Karen's Hair Studio** +
+ 1a Coles Road, Milton +
+ Mondays & Wednesdays - Senior +
+ Citizens Days - 20% reduction +
+ **Opening hours** +
+ Monday / Tuesday 9am-5.30 +
+ Wednesday / Thursday 9am-6.00 +
+ Friday 9am-7.00 Saturday 9am-5.00 +
+ **Tel:(0223) 440198** +
+ **Easy Parking** +
++++++

Annual Parish Meeting

After the Country Park update, the following points were raised-
The need for an effective sound barrier, control of horses and dogs and accesses other than the access at the car park end to be unpublicised pedestrian access only.

Roger Day gave a report on the Parish Council activities over the past year followed by a question and answer session. There were questions about the open spaces and roads not yet handed over by the developers and the safety of the Butt Lane and Fen Road junctions.

At the end of the meeting Roger Day announced that he would be standing down as chairman but continuing as Parish Councillor.

At the Parish Council meeting following the annual meeting the incoming Chairman, Don Wildman thanked Roger for all his hard work as chairman over the past years and he was sure he spoke for everyone when he said he was pleased to see that Roger intends to remain actively involved on the Council. J C.

*Special Introductory Offer

for **£5** from
Betty's Hair Fashions
JOICO
Hair Repair
System

This is a deep conditioning "in salon" treatment to suit the need of the individual client.

Hair Repair System protects against excessive heat exposure from driers, hot brushes and also the damaging effects of U V light.

Most of today's hair products contain harsh chemicals but the gentle, deep cleansing and conditioning properties of the **JOICO** range leaves your hair soft, silky and manageable.

For more information or an appointment to discuss any hair problems.

Phone
Betty's Hair
Fashions, Cambridge
Road.
420526

Earth Care



Hair Care
We Care

* This range of products is exclusive to our salon.

Notice

Milton Village View is unable to check or verify the warranty's authenticity of or representations made by their advertisers and must therefore exclude liability howsoever arising from any advertisements in this newspaper. Nor do any statements necessarily accord with the opinions or beliefs of the Editors, Milton Parish Council or Milton Village View.

PARISH COUNCIL

DEVELOPMENT OFF COWLEY RD
The Parish Council will welcome commercial, social and leisure development subject to the provision of a suitable road system and access.

COUNTRY PARK

Proposals put forward include:-

Fishing: Both lakes to be let to an angling club and Milton residents to pay a nominal fee for fishing Dickersons Pit, but the full fee to be payable for fishing both.

Horses: To be restricted to 3m wide paths and to walk not gallop.

Entrances: For pedestrians to be at Fen Road, Shirley Close and Old School Lane.

TRAFFIC CALMING

The County Council will inspect sites for traffic calming measures. A Parish Council's willingness to contribute towards the cost of a scheme would be a factor taken into account when considering such schemes.

CABLE TV

Plans where Cable TV intended to lay cables have been received.

M Spooner

Non Sporting Groups Editors Note

As Editor of the Section for Non-Sporting groups I would be grateful if contributions for the September issue of the Village View could reach me by 10 August 1992.
Iris Chilton

IGM BUILDING SERVICES

**EXTENSIONS ALTERATIONS
HOME IMPROVEMENTS
WALLS & PATIOS**

FREE ESTIMATES
& ADVICE

MILTON
CAMBRIDGE
TEL. 440126

IAN G MARNOCH

Public Notices

WOOD GREEN ANIMAL SHELTERS STRAY DOGS

YOUR LOCAL COUNCIL HAVE
ARRANGED WITH WOOD
GREEN ANIMAL SHELTERS
FOR STRAY OR LOOSE DOGS
TO BE PICKED UP.
(ENVIRONMENTAL PROTECTION ACT 1990)

IF YOUR DOG IS MISSING
OR YOU WISH TO REPORT
A STRAY DOG
TELEPHONE: (0480) 830014

Milton Parish Council

Dates of meetings
1st June, 6th July, 7th September
7.30 at the Community Centre

CHILDMINDING GROUP

The new Children Act makes it a legal requirement that if you look after a child, under 8 years old, for more than two hours (in any one day), who is not a close relative, and you do it for reward, (which includes an arrangement between two mothers, i.e., she looks after your child, and you look after hers), then you are required, by law, to be registered with Social Services.

If you are unsure whether the childminder is registered, and insured, **ASK THEM.** They should be able to show you a Registration Certificate, issued by Social Services. (They cannot be insured without being registered).

Milton Childminding Group works closely with Social Services, to maintain and improve conditions for their childminded children. This includes a six week course before they become childminders. This helps them ensure that the children in their care are looked after, to the best of their ability, in a happy, caring environment.

For more information -

Tel. Lynda on 862093. Lynne Twinn

HOWARDS WAY

- * For all Driving Instruction
- * Beginner to Test Standard
- * Motorway Instruction

DOT.ADI\CAADI\ADIA.

TEL. Cambridge
(0223) 862501

193 The Rowans, Milton, Cambridge.

SPORTING MILESTONES

Saturday, 2 May 1992, a day to be remembered by Milton C.C. as the day they played their first ever game in the Cambs Cricket Association's Senior League 1.

Resultwise, however, it is also one to be forgotten, but definitely taken on board.

*

Batting for Milton 2nd in a C.C.A. Junior Cup round against Haslingfield, on 10th May 1992, Keith Wiilkanowski hit his maiden century.

The first 50 came in the 58 minutes and Keith completed the 100 runs in a total of 71 minutes.

Keith was undefeated and Milton won a very close and exciting match.

The "beer can" worked overtime after the game - didn't it Keith??

*

April 1992 Milton F.C. Reserve XI became Division 4 Champions of the Cambs League.

FOOTBALL CLUB

Another season has come to an end, a season of success for a variety of reasons, both on the field with some notable achievements and off it, in social events and fund-raising activities.

Milton 'A' began life this season as a means of providing a game for as many players, new and old, as it could. However, as the season progressed, clear potential could be seen for building a team that could, next season, be contenders for promotion. Some good performances were achieved and the team finished just below half-way in Division 5B.

Meanwhile, the Reserve Team continued their good form which had them in top spot at the halfway stage and, in spite of one or two hiccups, duly won division 4B of the Cambs League and promotion to Division 3. The "icing on the cake" was their subsequent victory over Bassingbourn Reserves, winners of Division 4A. I'm told there were some celebrations but I don't remember too much about them!! Milton First XI's season turned out to be a mixture of "the good, the bad and the indifferent". Some excellent victories, including inflicting the only defeat all season on Champions Somersham Town, was matched by some veritable disasters, such as failing to score a single penalty when a drawn cup-tie was decided by the undoubtedly contentious method of 'Penalties'. The team ended by consolidating their position in the upper half of Division 1B.

Two contrasting aspects of the Club's season must be mentioned. Firstly, of considerable concern was the very poor disciplinary record, and it is not something to be proud of. All involved in the club, both officers and players must do everything they can to reverse this unhealthy trend. On a lighter note, once again the splendid spirit and camaraderie throughout the club has, I am sure, contributed strongly to everyone's season.

Barry Bond

NETBALL CLUB 3 IN 1 SUCCESS

Despite injury, operations, sickness and pregnancy, the club has achieved the ultimate hat trick.

In any Club the Third team always has the greatest struggle due to their players being used to fill gaps in the other teams. However, with grit, sheer determination and team spirit, they were runners-up in their Division which gives them promotion to Division Three.

The Second team has shown how the standard of netball has improved in the Club over the past twelve months since they were the winners of the Third Division last season and runners-up of the Second Division this year. Promotion to Division One is somewhat daunting but Milton players are set for the challenge.

Nothing can be said that could really express the joy, pride and happiness felt by the entire Club at the success of our First Team. Being part of a small Village we all strive to put Milton on the map as a Club that is always willing to have a go and try our best. Milton One, however, has achieved all this and more by winning the First Division and hence gaining promotion to the cream of netball in our region, the Premier League. There is no doubt that the First team will have their work cut out in the Premier League but they look forward to this challenge. The ideas, tactics, skills, etc. that they will glean and bring back to the Club are sure to encourage all Milton members to greater and better things.

In the eleven years of the Club's existence no-one ever thought the day would come when, not only have all three teams been promoted but that the name of Milton would be part of the Premier League.

We all now look forward to the fun time during the Summer League before the serious challenge begins in September.

Sue Horrod

SPORTS NOTICES

TO ALL ASPIRING YOUNG CRICKETERS OF MILTON

Milton Cricket Club has this year launched a Colts section of the club, and all youngsters from Secondary School age and onwards are invited to attend at the Sycamores Recreation Ground on Wednesday evenings at 6.30

The sessions will be co-ordinated by Ray Scott, and tuition in all aspects of the game will be given by senior members of the cricket club. In addition to cricket instruction, it is hoped to arrange several competitive games with other clubs.

Parents, please encourage your children to take advantage of the new sporting facilities in the village. H C

Paul Harrold

SUNCLOSE FARM

BUTT LANE

STRAWBERRIES & RASPBERRIES!

Pick your own and ready picked.

also

**GOOSEBERRIES, BLACKCURRANTS,
REDCURRANTS, TAYBERRIES,
LOGANBERRIES and BLACKBERRIES.**

FOR A 5% DISCOUNT

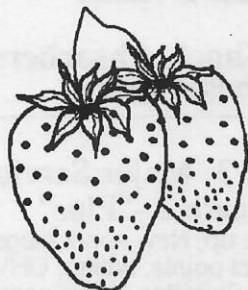
BRING THIS AD. COMPLETE WITH YOUR NAME AND ADDRESS

Name _____ Address _____

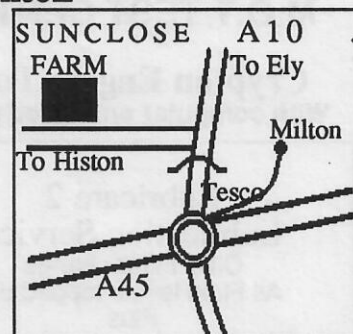
We look forward to seeing you

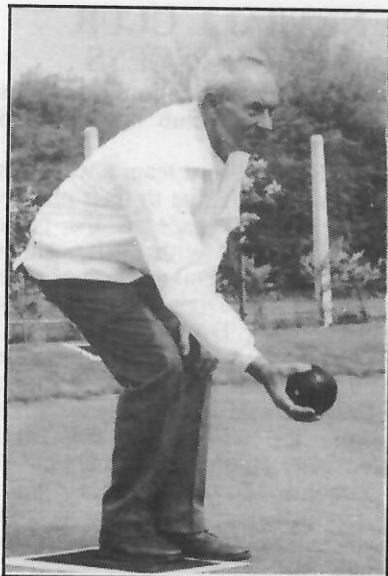
For up to date details -TEL: CAMBRIDGE 860522

Open 9am - 9pm WEEKDAYS 9am - 6pm SATURDAYS & SUNDAYS
JUNE - SEPTEMBER



Milton





Ray Godden plays the first bowl on the fine green he has lavished with T.L.C..

I stood admiring the bowls green, when a local resident, who shall be nameless, asked if I could tell him where he could obtain 'T.L.C.' (as reported in the last edition of the Village View) Fertilizer, since he wished to try it on his back lawn!

Needless to say my reply was extremely diplomatic. *H Captain*

Our congratulations go to Lorna and Godfrey Sheen and Len Sandford of the Milton 2 Carpet Bowls Team who won the South Cambs Carpet Bowls League Triples Final, held at Fowlmere on 15 March 1992, for the second year in succession.

They beat Spicers after a very good game, enjoyed by all who watched.

Well Done - Once Again.

OUTDOOR BOWLS CLUB

On Friday 1 May 1992 the bowling green at Milton was open for business, and many club members turned out to roll their "woods" over the new surface.

The playing surface looked in very good condition, and it was generally agreed that it played well. More than 50% of the club membership took part in a club drive on the following day.

On the 5th of May Milton played their first ever league game and defeated Great Shelford convincingly.

The playing surface, its surrounds and the club rooms look very good and that says a great deal about the club members. Their keenness is such that we have come an amazingly long way in a very short time, in terms of equipping the club with all the gear necessary to operate as a bowls club. Furniture, cutlery, crockery, glassware, cabinets, teapots, trees, shrubs and the like have been bought, begged or borrowed, and jobs like painting cleaning, weeding, edging, carpentry, cutting and digging have been carried out with real enthusiasm. A wonderful job well done.

Our activities have aroused considerable attention and, particularly when playing bowls, its unusual not to have spectators. If anyone would like to join Milton OBC, please contact me for details. If you have never played bowls please give me a ring and I will arrange a practical coaching session, free of charge!

Club Night is on a Wednesday each week, which provides an opportunity for club members to play each other, except on three occasions during the season when league games will be played.

Ken Lawson Hon. Secretary Tel. 862500

INJURY-HIT YOUNG SPORTING PROFESSIONALS

Two of Miltons young sporting professionals, footballer Kevin Wilkin and cricketer Darren Cousins, have been struck down by injuries sustained whilst pursuing their occupations.

After playing only a few games for Northampton Town FC in division four of the Football League, Kevin has had to undergo four operations on one of his knees. Recuperating from this type of injury is normally a long long haul, and I am sure that we all hope that Kevin's devotion to his sport, and his will to perform well, will be a factor towards his complete recovery and enable him, next season, to get on with the game which he loves so much.

Darren, who has this season, begun a two-year contract with County Champions, Essex, has suffered a recurrence of a back injury, and is currently awaiting the results of medical tests. He hopes that the problem can be cured by an adjustment to his bowling action. Darren, like Kevin, is also very much devoted to his game, and knowing them both, I am sure they will not throw in the towel and give up the fight back to full recovery. *H C*

CARPET BOWLS

On the 30th of April Milton Carpet Bowls Club held their annual end of season party.

Milton III team, who were promoted to the 1st Division this season, finished just one point behind Milton I team. They came about middle of the 1st Division league and hope to do better next season. Milton II came fourth in the 2nd Division.

Godfrey and Lorna Sheen, Margaret and Len Sanford did very well in the Premier Corps Competition at Soham in April, only losing by 1 shot to the Winners. They were worthy runners-up and received a nice Trophy each and a bottle of wine.

This season we have had quite a few children join the Carpet Bowls Club, and they come along early on Thursday Club night to enjoy an hour or so, learning to be good bowls players and have a lot of fun. There is a special morning session for children, during School holidays, on Thursday mornings.

Further information from Fred Chilton - 862381 or Jane Coston - 861655. *I Chilton*

BENET GARAGE

M.O.T TEST CENTRE

Crypton Engine Tuning
With computer enhanced printout

Lubricare 2
Lubrication Service
Oil & Filter change
All Fluid levels topped up
Plus
"Health Check" and written report.
£38.95
price inclusive of parts, labour & VAT

Tel. 420380

lubricare 1 £16.95
Engine Oil & Filter Change
(price inclusive of labour & VAT)

Full Air Conditioning service
available
Calor Gas & Lucas Electrical
Stockists
Paraffin & Diesel
Thanks to all our customers for
their continued SUPPORT

All Repairs and Servicing to any make of vehicle

Monroe Shock Absorbers
Authorised Centre

Lubricare 3 Major Service
Lubricare 2 - "Plus"
Engine tune up; New spark plugs;
New contact points; timing; OHV
Tappets; Carburettor Adjustments;
New air filter & Road Test.
£69.95
Price inclusive of parts, labour & VAT

Designed and published by Jane Coston, 67 Coles Road Milton Tel. 861655
Editors - Michael Spooner, Iris Chilton, Harry Captain, assisted by Kim Potts