

# Milton Village View

Established 1991

Millennium Dawn over Milton



Winter Issue - December 2000

## Village News Sheet

Merry Christmas  
& Happy New Year

Parish Council news page 6

Competition page 7

Issue 45

### Operation Christmas Child

Operation Christmas Child is a project within Samaritan's Purse, a registered charity, dedicated to relieving the suffering of children abroad who are homeless, live in orphanages or are without family support, or whose lives have been blighted by poverty, ill health, natural disaster, conflict or war.

This year the children of Milton Primary School have gathered together 583 boxes. Each box filled had to be accompanied by a cheque for £2.00 to cover the cost of sending the boxes to their various destinations. The boxes were all labelled by the senders giving details of the age range the gift was suitable for and whether it was for a boy or a girl. Anyone wishing to send a box of gifts was given details of suitable items that could be sent. Whilst I was there, one of the boxes lid came off and before it was replaced and secured I caught a glimpse of the gifts - gloves, sweets, crayons, colouring book, small doll, knitted teddy, toothpaste and toothbrush. Senders could also include a letter and a photo of themselves if they wished. Talking to the children, they had thoroughly enjoyed bringing gifts to the school to help children in other countries who were in need. Congratulations must go to organiser, Angela Campbell for all her efforts.



Photo from the Millennium Collection

Children of Milton Primary School with organiser Angela Campbell helping to pack the gifts ready for transporting abroad

JC

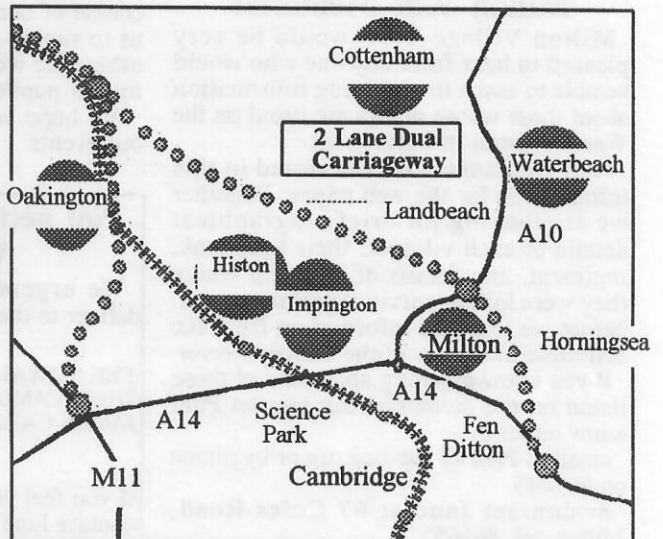
### A14 Multi-Modal Study

One of the 'strategies' on display at the public exhibition was as below. There are 4 very different 'strategies' and the public are being asked for their comments. It is expected that a mix and match of the 4 strategies will emerge.

A copy of the plans is now on display at the Community Centre and although the exhibition was not due to visit Milton, I have requested that it does. As soon as a date is fixed I will let you know.

From December 4th you will also be able to see these plans on the following web site - [www.go-east.gov.uk](http://www.go-east.gov.uk)

Jane Coston Tel. 861655



Multi-Modal study of the A14 'Strategy 3' includes a new dual carriageway on the north edge of Milton linking in with the A14 just beyond Fen Ditton

## Supported by



brilliant people running  
world class utility services

## Next Issue

due out beginning  
of February

Items for inclusion in  
the New Year Issue  
should be with one of  
the Editors by the  
**12th of January**

### Story to tell?

Club, Group or Sports Report to  
give? Anything Interesting?

Then please contact us. You only need  
write something the length of this appeal  
if you wish, but please let us know your  
news. If you let us know about your  
event/activity we will try to send  
someone along to take a photo. We are  
also happy to receive articles by e-mail.  
We need to hear your news to keep the  
Village View interesting.

Look forward to hearing from you.

*The Village View Editors*

### Milton War Memorial

Milton Village View would be very  
pleased to hear from any one who would  
be able to assist in gathering information  
about those whose names are listed on the  
War Memorial in Coles Road.

Paul Oldham is also interested in this  
information for the web pages. Together  
we are looking for brief biographical  
details of each villager: their age, rank,  
regiment, any details of how and where  
they were killed, surviving relatives, etc.  
before we lose this information from the  
collective memories of the village forever.

If you know anything about any of those  
listed on the memorial can you let Paul  
know either by:-

email at Paul @ the-hug.org or by phone  
on 861045

or contact Jane at 67 Coles Road,  
Milton. tel. 861655

### Tell us Your Views on Buses

Following this summer's controversial  
route changes, CamBUC (the Cambridge  
Area Bus Users' Campaign) has held  
three meetings in this area, discussing  
with local people the improvements  
needed in your bus services and facilities.  
Councillor Jane Coston has attended these  
and an action plan is being drawn up.

The next meeting will  
be held at the  
Community Centre,  
Denson Close,  
Waterbeach on  
Wednesday 10th  
January at 8pm. You  
are welcome to arrive  
at any time from 7:30  
onwards to talk about  
your bus problems.

You can get more details about CamBUC  
from its secretary, John Ratcliff, on  
245533 or from [www.cambuc.org.uk](http://www.cambuc.org.uk)

You can catch a number 9 bus to the  
meeting at 7:35 from the Waggon and  
Horses. Alight at the stop after the  
Brewery Tap. We will ensure the  
meeting ends in time for a scheuled bus  
back.



### Milton School Association

Registered Charity Number 1035659

Milton School Association would like to  
thank all those who have supported the  
school by way of donating items and/or  
attending our events. We have been  
fortunate to raise over £12,000 during the  
course of our last financial year enabling  
us to supply a great number of items that  
otherwise would not have been provided  
for our pupils.

We hope you will continue to support  
our events.

*Mandy Sievwright*

### Not getting your copy of the Village View?

We urgently require a volunteer to  
deliver to the following circular route.

THE ROWANS	101 - 163 - ODDS
THE SYCAMORES	1-44 ODDS & EVENS
JAMES CARLTON CT.	
TOTAL 86 copies	

If you feel you could help - please  
contact Jane Coston - Tel: 861655  
67 Coles Road, Milton

### Schwarzkopf

For lasting curls  
style and volume with

'Natural Styling'

at

Bettys Unisex Hairdressers  
Tel: 420526

### HARMONY

Hair & Beauty Salon

6 High Street, Milton, Cambs.  
Tel. (01223) 863636

Hair, Beauty, Reflexology, Aromatherapy, Physiotherapy

劍橋華人社區中心成立已  
有四載之久。

主要目的是為華人謀取福  
利，守望相助，敬老扶  
幼，發揚華夏優良傳統，  
促進文化，籌辦文娛，康  
樂，體育，等等，活動。  
是一個不謀利及沒有任何  
宗教信仰政治色彩的團  
體。歡迎居住在劍橋郡的  
華人，華僑，華裔等入  
會，本會需要更多會員積  
極參與會務，為華人服  
務，共謀福利，與當地政  
府攜手建立平等和諧大同  
的社會，使我們下一代的  
生活更安定和舒適。

THIS IS THE ENGLISH VERSION OF  
ABOVE:

The Cambridge Chinese Community  
Centre was formed four years ago. The  
aims are:

1) to provide services for the isolated  
Chinese to overcome the language barrier  
and get them into the mainstream society.

2) to assist in their social and welfare  
requirements.

3) to maintain our traditional culture  
through social activities.

4) to keep in line with the council's  
policies to build a multi-cultural,  
harmonious society for future generations.  
It is a non-profit making, equal  
opportunity organization.

We welcome residents of Cambridge to  
join in as members.

Contact: C.C.C.C. 11, College Fields,  
Cambridge CB4 1YZ Tel: 01223-426448

### Women's Institute

October, November and December all  
seem to be in party mood with members  
night, 75 years celebration and  
Christmas, so let's have a knees up.

*Mary Daniels*

### PAINTING DECORATING GLAZING

Mobile  
0860 453533  
Fax:  
01223 863620  
(local resident)



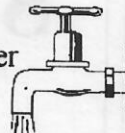
**B.J. LEONARD**

### M J POTTS HEATING & PLUMBING SERVICES

300 The Rowans  
Tel: 01223 440795

All Installations/Repairs  
undertaken

Approved CORGI Gas  
& TOTAL OIL Installer  
Work Guaranteed  
FREE ESTIMATES





Milton School Association

Future events taking place at Milton  
Primary School

## QUIZ NIGHT

Friday 26 January 2001

7.00pm for 7.30pm start

Tickets £6.00 each

Including fish & chip supper

## 70's Night

Saturday 24 March 2001

7.30pm - 11.30pm

Ticket price to be confirmed.

## CAR BOOT SALE

Saturday 28th April

9am - 1pm

Pitches £5 in advance

Wet weather plan

For further information,

please contact:

Mandy Sievwright on 570971

Milton Scout Group

## MAMMOTH JUMBLE SALE

Milton Community Centre

10th March 2001

2-30pm

Admission 20p

House to house collection

will take place

on the evening of

Friday 9th March 2001

Milton Pre-school

## Family Christmas Disco

Saturday 9 December 2000

7pm to 11pm

to be held at

the Community Centre, Milton

Tickets cost £2.00 per adult

(children free)

and are available from

the Pre-school (in the Annex),

Cambridge Building Society

in the High Street

&

the Post Office in Coles Road

Hot Dogs and Jacket Potatoes will be

available to buy and there will be a Cash

Bar and Grand Raffle

Milton Scout Group

## VALENTINES DISCO

Milton Community Centre

Coles Road, Milton

SAT 10th FEBRUARY  
2001

8.00pm - Midnight

Licensed Bar

Tickets £6 including supper

From the Post Office, Coles Road,

Milton or Tel. 01223 440677

Landbeach Busy Tots and  
Playgroup

## Christmas Bazaar

On

Saturday 2nd December  
at

Landbeach Village Hall,

2.00 - 4.00pm

Entrance 30p with a

Lucky Prize ticket

There will be a variety of craft  
stalls, face and nail painting, adult  
and children's tombolas, raffle,  
refreshments,

Santa's Grotto plus lots more.

Edmund House Group of Homes  
(A registered Charity)

## Christmas Concert

with the

Soham Comrades Band

and the

"Women of Note" (choir)

20th December

8pm Start

Coles Road Community Centre

Free refreshments

There is usually a demand for tickets

so do not delay, tickets available

from the Cambridge Building

Society, Milton.



Planet videos would like to  
welcome Milton to its newly  
opened store.

OPEN UNTIL 10PM EVERY DAY

All your nights entertainment under one  
roof. We stock multiple copies

Of all the latest releases videos / DVD /  
play station games.

We also serve fresh hot popcorn drinks  
& confectioneries

Now there's no need to make that trip  
into town every time you want a film.

Try us you won't be disappointed

You can find us at 4 Coles Rd next  
to the post office

Tel 01223 518300

Make your night a planet night

Advertisement

### MILTON W.I. PROGRAMME 2000

Dec 12th CHRISTMAS PARTY

2001

Jan 16th "Old Cambridge"

by Mr John Durrant

Feb 20th "Children we have loved"

by Mrs Wyatt

Mar 20th A.G.M. Cheese and Wine

Apr 17th "Cam Sight"

by Mr Peter Gibson



## MILTON GAS SERVICES

Eddie Kikas

29 Landbeach Road, Milton

Tel./Fax: (01223) 861810

Mobile: 07831 228181

Servicing, Installation & Repairs to all  
Gas Boilers, Fires, Cookers,  
Central Heating Systems etc.



Corgi Registration  
Number 161938

### Cambridge & County Folk Museum future events

9th December - Victorian Christmas

20th January - "Food, glorious food"

10th February - "Valentines"

For ages 6-10 years 2.30 pm - 4.00 pm

£2.50 per child (prices will increase to  
£3.00 in January 2001)

Book and pay in advance to avoid  
disappointment.

Please contact Jacqui Strawbridge at the  
Museum for further details.

## Nigel GODDEN AUTO SERVICES

All makes - service and repairs

CITROEN AND TOYOTA SPECIALIST

SERVICING, CAMBELTS, REPIPING,

CLUTCHES, NEW CHASSIS, BRAKE

OVERHAUL, WELDING, ELECTRICAL

FAULTS, ABS, INJECTION SYSTEMS ETC.

CALL NOW FOR FRIENDLY ADVICE OR QUOTE

UNIT 13 CAVE IND ESTATE

FEN ROAD

CHESTERTON

CAMBRIDGE

TEL: 01223 425125 MOBILE: 0831 817981

MILTON RESIDENT

## Children in Need



Linda Molloy and Lisa Kikas - St Trinians girls

Two St Trinians girls were seen terrorising the local pubs on Friday night, demanding money with menaces from unsuspecting local drinkers. Perennial schoolgirls Linda Molloy and Lisa Kikas raised £205 for Children in Need. Many thanks to the patrons of the four local pubs and the garage, who gave so generously.

## Lunch Club

The Xmas lunch will be our next big occasion, having had a special 80th birthday celebration, when the gentleman concerned had unexpected guests. It is lovely to have something to celebrate. We shall be doing our usual raffle and bathroom stall at the Church Bazaar. We have lost one of our helpers when Pat and Cecil moved away, they have helped ever since the lunch club started more especially since retirement, and we wish them well in their new abode.

*The Prime Team*



Photo from the Millennium Collection

Halloween Night - Trick or Treat

## Milton Country Park

After what seems like a very long wet spell of weather, there has been a lot for the Rangers to do in the Park this autumn. Much has been coppiced at the north end, and there has been tidying up done in the central area around Halls Pool. Unfortunately, the bridge over Halls Pool has been closed for some time after the discovery of rotting timbers. That problem should soon be sorted.

Some wildlife has suffered from badly discarded fishing tackle, but as I write, we appear to have a number of swans 'testing the waters'. If we do get a harsh Winter this year, please give a thought to the wildlife in our village, and if the lakes in the Park freeze over, please keep your children and dogs off.

The 'Friends' have managed to staff the enquiry office throughout the school holidays, and the Visitor Centre will be open every weekend during the winter. If you are not already aware, we do sell wild bird food and peanuts at very competitive prices. All the money we raise is put back into the Park.

The 'Friends' have just held their annual barbeque; Malcolm showed some 'old' slides of the Park during its transformation. We would welcome new members to the 'Friends', our aim is to enhance the area for the benefit of wildlife and visitors. If you are interested, please pick up a leaflet from the Visitor Centre.

*Tim Siggs* Chairman of the 'Friends'.

## MILTON POST OFFICE

CARDS	SHOE REPAIRS
CONFECTIONARY	PHOTO COPYING
DRY CLEANING	FAX SERVICE
STATIONERY	GIFTS

2 COLES ROAD MILTON

Open: Mon - Fri 9.00am. to 5.30pm.  
Saturday 9.00am. to 1.00pm.

**Painter & Decorator**  
**Interior & Exterior**  
**High Class Decorating**  
**Free Estimates**

**R.P. Kent**

Tel. 01223

**860995**



Eric Pranklin trading as  
**Pete's Quality Meats**

1a Arbury Road, Cambridge

**Christmas & Millennium**  
Free range and traditional

**TURKEYS**

Geese, Ducks,  
Hams, Gammon,  
Pork and Beef

**Free delivery in Milton**

**ORDER NOW!**

Tel: Eric 01223 352853

## Special Millennium Babies Photo

We would like to get a photo of all the babies born this year. If your baby was born this year - please come along and be part of the photo at

**December 6<sup>th</sup> 2.30pm**

AT

**All Saints Church Hall**

For more information -  
contact Sue Nunn Tel. 861747

## Millennium Photo Book

It is hoped this book will be available early in the new year when advance orders will be requested.

**Millennium Photos - Last Chance!**  
If you think we have missed a photo for the collection - please let us know.

For further information contact Jane Coston Tel. 861655

## Notice

Milton Village View is unable to check or verify the warranties, authenticity of or representations made by their advertisers and must therefore exclude liability howsoever arising from any advertisements in this newspaper. Nor do any statements necessarily accord with the opinions or beliefs of the Editors, Milton Parish Council or Milton Village View.

**MILTON WINDOWS**

CALL THE COMPANY THAT CARES  
Specialists In Replacement

- Windows • Doors
- Conservatories • Facias In
- PVCu • Hardwoods
- Aluminium • Etc.
- 21 YEARS EXPERIENCE IN THE INDUSTRY.

**CAMBRIDGE**  
**(01223) 440376**

**FAX (01223) 860284**

2 Bulteel Close, Milton, Cambridge  
• QUALITY COSTS NO MORE •



## Opening of the Youth Building

Our new Youth Building opened its doors for the first Youth Club on Monday 13th November. 43 young people came in and there was great enthusiasm for the activities on offer: pool table, table tennis, TV/video, and our tuck shop and coffee bar. We have had lots of praise from parents of the young people, who really appreciate this facility. At the moment there will be a structured Youth Club session on both Monday and Thursday nights, 7-9pm: eventually we hope to have separate junior and senior clubs. We hope to add some drop-in sessions on other nights of the week after Christmas. We are still looking for some equipment, and hope to get PC's and other games soon. The Youth Building Steering Group would like to extend our thanks to everyone who has worked on the project; it has been a real team effort, and I hope we can keep up the momentum and continue improving the facilities and opportunities for our young people. Hazel Smith (Youth Building Steering Group)

Thanks go to: Len Sandford, Eddie Belcher, Tom Nicholls, Dennis Cousins, Mick Gray, Julie Gray, Sue Horrod, Laing Construction, A.L. Fuller Electrical, Sue Lester of CAYC, Lynette and Steve Levitt and Celltech Chiroscience, Paul Lester, Rob Farrington and the Milton Scouts, Mrs Maltby and Mrs Price, not to mention every one else who has had to put up with it being an obsession for some of us ....  
Hazel Smith (Parish Council Youth Committee)

*Congratulations must go to all who have been involved in helping to provide this fantastic meeting place for all those of 20 and under. A great deal of hard work has been put in by this small but committed band of people - well done! - Editors*

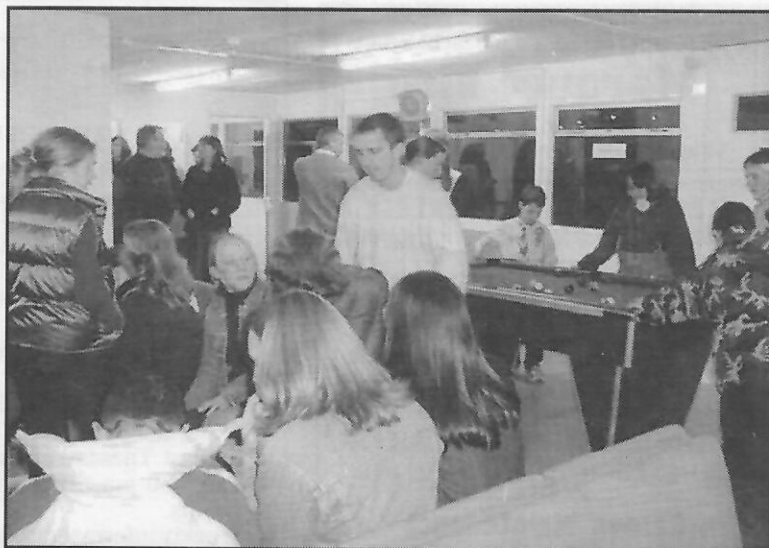


Photo from the Millennium Collection  
Busy 1st night in the Youth Building



Photo from the Millennium Collection  
Youth club members enjoying a game of pool

## Play Equipment on Coles Road Rec

Older children in the village will have been missing the Aerial Runway, which had to be disabled over a year ago, because the wood was rotting. The Parish Council and Community Centre and Recreation Grounds Committee couldn't afford to replace it straight away as the play area for younger children had to be replaced at the same time. We have worked hard to get grants towards the new equipment for older children, and work will start in December on a 6m high Space Net Climber, which was identified in our meetings with the teenagers as what they most wanted. There will also be rubber surfacing under the Tyre Swing, and the Roll-A-Barrel will be placed on a rubber surface beside it.

We are very grateful to the sponsors of this project: Waste Recycling Environmental, together with the Waste Recycling Group plc; the South Cambridgeshire Crime and Disorder Partnership, Histon Police, the Cambridge Evening News Community Challenge Awards, Milton Parish Council and Milton Community Centre and Recreation Grounds Committee.

Hazel Smith (Youth Action Group, Milton Community Centre and Recreation Grounds Committee).

### M.J. BLACK

**Carpentry & Joinery**  
Fitted Kitchen Specialists  
complete service from  
Planning to Installation

Tel. (01223) 277772

Mobile 0831 626398

### R B

**Electrical**

Your Milton  
Domestic and  
Industrial Specialists

Tel. 365200

*Adventure*

### Scouting in Milton

*Friendship*

Helping the development  
of young people

**ADULTS NEEDED  
CAN YOU HELP**

Beavers - 6 to 8 years old  
Cubs - 8 to 10½ years old  
Scouts - 10½ to 15 years old  
Ventures - 15 to 20 years old



For more information contact

Rob Farrington  
8 Pryor Close  
Milton Cambridge  
CB4 6BU

Telephone 01223 860160  
Or Email: [rob.farrington@x-stream.co.uk](mailto:rob.farrington@x-stream.co.uk)



### RECTORY FARMSHOP A10 MILTON BY-PASS



REMEMBER TO ORDER YOUR  
CHRISTMAS POULTRY EARLY!  
**FREE RANGE BRONZE TURKEYS,  
WHITE TURKEYS, GEESSE  
& LARGE CHICKENS.**

FROM THE END OF NOVEMBER  
WE WILL HAVE OUR CHRISTMAS  
TREES IN STOCK:  
ROOTED NORWAY SPRUCE, POTTED  
NORWAY & BLUE SPRUCE,  
NORDMANN & CHRISTMAS  
WREATHS.

CALL IN AND SEE OUR TEMPTING  
RANGE OF CAKES, JAMS, FUDGE,  
BISCUITS & ORGANIC FRUIT JUICES.  
HOME GROWN POTATOES & ONIONS  
AND FRESH LOCAL PRODUCE.  
WE ALSO STOCK LOGS & COAL

TEL: 01223 860374

MOST MAJOR  
CREDIT  
CARDS ACCEPTED.



50th (Cambridge & Landbeach) Scouts

## Marquee hire

for more information  
Telephone Bob on (01223)514332

## PHYSIOMOBILE

Physiotherapy now at Milton Surgery Tel. 441421

## JAMSING

Music For Pre-school Children Tel. 01223 232192

## BRICKLAYING/BUILDING CONTRACTORS

FOSTER & CARBIS Tel. 863275

## PAINTER & DECORATOR

DAVID PECK Tel.: 01954 211428

## Garden Maintenance

Mr Medlow Tel 01954 252047

Peacock Travel, Executive Coaches  
Day Trips, Short breaks Tel. 811481

## Building Consultant

Paul S. Seaman Tel. 01223 563530

## Aerobic Dance in Milton

Tel. 01223 504489

## PERSONALLY TAILORED THEMED CHILDREN'S PARTIES

Leprechaun Parties - Tel. 01223 521944

## CAM LAWNMOWERS

For repairs Tel. Milton (01954) 231569

## Drainage & Groundwork Contractor

C H LUMB Tel. (01223) 354402

## Planet Video Coles Road

Brian Davey, Recorder Lessons  
all standards Tel. 012223 440444

## PHYSIOTHERAPY & REFLEXOLOGY

Liz Cradock Tel: 01233 862501

## Visiting Chiropody Practice

Julia Adams Tel. Waterbeach 441733

## NEW LOOK NAILS Nail Extensions

Telephone Paula on Milton 511238

Brief, solution focussed, holistic therapy  
Michael Grevis Tel. 01223 563403

The above are waiting for advertising space.

## Julie's BLT Workout

at  
Milton Community Centre  
Mondays: 7.00 - 8.00pm

Introductory  
session only  
£1.50



Please remember  
to bring a mat,  
towel and a drink  
with you.

For further details please call Julie on:

☎ 01954 252992 or ☎ 07711 569641

RSA/YMCA Qualified Instructor  
Member of Fitness Professionals



## LANDBEACH AND MILTON BAPTIST CHURCH High Street, Landbeach

Our Sunday Services are held at 10.30 am  
when there are also activities for children  
and young people and at 6.30 pm when  
we have a more quiet, reflective act of  
worship.

Midweek activities include:

- A monthly club for children ages 5 - 11  
on the last Tuesday of each month from  
6.30 to 7.30 pm. Ring Sallie on 860410  
for details.

- Weekly informal discussion groups for  
Bible study and prayer held in Landbeach.

- A monthly homegroup held in Milton

- A fortnightly group on Wednesday  
afternoons to which a variety of speakers  
are invited. For details ring Nellie on  
863229.

For details of these and other activities,  
or if you'd like to speak to our minister  
then

please ring Rev. Sheila Martin  
on 440395.

## ALL SAINTS' CHURCH

### CHRISTMAS SERVICES

Sunday 17th December  
10.30 am

### Sunday School Play - Simeon

6.30 pm Celebration with Holy  
Communion led by the Youth Band

Friday 22nd December

7 pm Carols by Candlelight service  
followed by coffee and mincepies  
(collecting tinned items and toiletries for  
the homeless)

### Christmas Eve - 24th December

8.00 am Holy Communion

10.30 am Family Service

3 pm Starting Blocks Special Service  
(a special service, activities and  
refreshments for younger children and  
their families)

11.30 pm Midnight Holy Communion

### Christmas Day

8 am Holy Communion

10.30 am Family Communion (1 hour)

For further details:-

contact the Church Office on 441007



## Extracts from minutes of Parish Council Meeting November 6

### Casual Vacancies

- Council co-opted Liz Baker from The  
Sycamores and Tim Siggs to fill the  
vacancies caused by the resignation of  
two councillors. Tim's father was a  
parish councillor in the 1950's and 60's.

### Landfill Site Butt lane

- Access to the reclaimed land by  
members of the public would take a  
minimum of 5-10 years.

- A stacking lane on site for vehicles  
queuing for the recycling centre, to  
prevent backing up on to Butt lane, was  
being investigated.

- A permissive bridleway has been  
completed through the trees adjacent to  
the Mere Way.

### Electoral Review

- A working party of South Cambs  
District Council is recommending two  
district councillors for Milton and that the  
village be included with Horningsea, Quy  
and Fen Ditton.

### Drains

- The drains in the High Street have  
been causing problems again. The  
County Council arranged for them to be  
"jetted" on 31 October. It would appear  
that the drains are on an antiquated  
soakaway system and cannot cope with  
excessive rainfall. Unfortunately it would  
be too expensive to put in a new system  
the County tell us.

## Draft Register of Electors

South Cambridgeshire District Council  
are requesting that you check the Draft  
Register of Electors. This is available at  
the Community Centre, Coles Road.

## ALMOND INDEPENDENT

INDEPENDENT FINANCIAL ADVISERS

## Chris Almond

MLIA(dip)

### FINANCIAL ADVISER

A MEMBER OF DBS FINANCIAL MANAGEMENT PLC

Regulated by the F.I.A.

Tel. 01223 440715 FAX. 01223 502510

Email: [chris.almond@almondifa.co.uk](mailto:chris.almond@almondifa.co.uk)

## I.G.M

### I. G. MARNOCH

86 BUTT LANE MILTON ~ CAMBRIDGE CB4 6DG  
Phone 01223 563192

EXTENSIONS  
GARAGE CONVERSIONS  
LOFT CONVERSIONS  
RENOVATIONS  
NEW HOUSES

FROM PLANNING TO COMPLETION

Do you need?

## Driving Lessons? or Window Cleaners?

Ring Howard  
Howards Way  
Tel. 01223 862501 or 0589 218045



## PUZZLE CORNER

To give Michael Spooner a well-earned rest Harry Capitain has agreed to set the competition for this issue. A turkey generously donated once more by Eric Franklin of Petes Meats will go to the author of the first correct answer opened and a box of table wine donated by Harry will go to the author of the second correct answer opened.

The Puzzle:- DECODE THIS VERY WELL KNOWN SAYING

A B U O V L C J O T > A  
 U T > L V N T A T V U O  
 A B U E J < < F T O

It is not necessary to have access to an "ENIGMA" decoder, but persons who were in residence in Milton during February 1989 or who have received typing lessons should have a distinct advantage in solving this puzzle.

ENTRIES SHOULD ARRIVE BY 21 DECEMBER. Please send to Harry Capitain, 81 Coles Road, Milton.

There was a bumper response to the 'Millennium Puzzle' in the last issue - but there were only 3 all correct answers. Most of the incorrect entries occurred with 1937, 1975 or 1988. 1937 saw a Coalition Government under Neville Chamberlain (not a Conservative Government) 1975 saw the start of the Cod War with Iceland (not the Cold War) 1988 was the year of the Olympic Games in Seoul (not in Spain)

The correct list of the all the years is:

1. 1900 Relief of Mafeking
2. 1901 Queen Victoria Died
3. 1912 Expedition of Scott to the South Pole
4. 1914 Great Britain declares war against Germany
5. 1924 First Labour Government under Ramsay MacDonald
6. 1929 Wall Street Crash
7. 1936 Civil War breaks out in Spain
8. 1937 Coalition Government under Neville Chamberlain
9. 1948 Harry Truman elected President of the United States
10. 1949 People's Republic of China Established
11. 1951 Festival of Britain opened
12. 1952 Eva Peron died
13. 1963 Great Train Robbery
14. 1964 Harold Wilson becomes Prime Minister
15. 1975 Cod War with Iceland begins
16. 1976 New Prime Minister is James Callaghan
17. 1988 Olympic Games in Seoul
18. 1989 Demolition (Dismantling) of the Berlin Wall begins
19. 1995 Blackburn Rovers are League Champions
20. 1996 Duke and Duchess of York get Divorced

So on this occasion, a prize will be awarded to the 3 all correct entries, which were sent in by David Lyle of Willow Crescent, Tony Stubbings of Coles Road and Ted Easy of The Sycamores. Our congratulations go to all three.

### ANOTHER PUZZLE

Here is a little puzzle I saw in the paper recently - If a sequence of numbers is 1957, 1958, 1959 and the next number is not 1960, what is it? As usual there will be a small prize for the first correct entry opened - send your entries to Michael Spooner 43a Old School Lane Milton Cambridge CB4 6BS by 7th January 2001.

## Richard brings home a Bronze Medal

Young computer programmer Richard Smith, who went to China in September to represent Britain in the 12th International Olympiad in Informatics, a computing competition, came 89th, winning a Bronze medal. The medal proudly proclaims itself to be a Bronze Metal, a testament to the translators' skill! There were 276 competitors from 72 countries participating. The competitions were held in two massive halls in the Beijing International Conference Centre: each student had a table with a computer equipped with the same software (Turbo Pascal and Turbo C). In each of two 5-hour sessions they were set 3 problems for which they had to write programs which would give a correct answer within a very short amount of computing time. For each problem the program they wrote was tested with 10 different sets of data. Problems included, for example:

Building a given 3D shape from as few as possible 3D Tetris shapes with four or fewer blocks in each shape.

You are given a number of items in a list, each one having a value. You only know how many there are. You can compare any 3 of them (7777 times maximum) and be told which is the middle one. Design a program to find the middle one of the whole set.

You can see all the problems they encountered in more detail on the IOI 2000 website at [www.ioi2000.org.cn](http://www.ioi2000.org.cn)

## Scrabble

We have just held our last Scrabble for the year 2000 which was also our Charity Scrabble. The trophy for the year was presented to Michael English with an average score of 408 with Michael Spooner as runner up with a score of 378, a consolation medal was presented to Pauline Blackmore. The charity winner was Mrs Sheila Badcock of Shelford with a score of 932 for two games, her chosen charity was MAGPAS. The next evening will be January 12th 2001.

ARMY NEARGOGI ASLIDEN

## Enterprise Club

We have a steady increase of members, meeting twice a month. The Xmas celebration tea will be the first Tuesday in December, when the scrabble trophy will be presented to the player with the highest average score, and each member should receive a raffle prize.

*The Enterprise Club.*

## Millennium Memento

The Millennium Committee are trying to organise a special Millennium gift for all children 16 and under at the end of this year. The gift and funding has yet to be finalised but if you would like to help with the distribution of these gifts we would be very pleased to hear from you. Further details to follow.

Contact Jane Coston

Chairman of the Millennium Committee - tel. 861655

### VACUUM CLEANER SERVICE & REPAIR



**Brian Honey**  
44 Denny End Road  
Waterbeach  
Tel.: 01223 861708  
evenings and week-ends  
  
FREE ESTIMATES  
LOCAL COLLECTION

### KATHY PLATT

Dip.(Adl) Counselling

### QUALIFIED COUNSELLOR

dealing with  
depression, stress, bereavement, personal and  
relationship problems.

For more information about how counselling  
could help you or to make an appointment,  
please contact me on:-

01223 861510  
MILTON

### DENNIS COUSINS

CARPENTER  
& JOINER



EXTENSIONS  
FITTED KITCHENS  
ALTERATIONS  
IMPROVEMENTS  
CUSTOM JOINERY

23 GODING WAY  
MILTON  
CAMBS CB4 6AH  
TEL: (01223) 560657

## 24SEVEN - New Sponsor of Milton Village View

Milton Village View has a new sponsor. 24seven is an innovative new utility services company, set up this April to provide the power to 5.2 million homes and businesses across London and the Eastern region.

24seven - so called to highlight its round-the-clock responsive service - operates the two regional power distribution networks that were previously managed by Eastern Electricity and London Electricity.

It has taken over the Eastern Electricity training centre and depot in Milton, and you may well have seen its eye-catching orange and grey logo on vans and support vehicles, staff uniform and identity cards.

The company aims to expand into the design, development and operation of other utility networks, not only in electricity but also in gas and water.

If you have any problems with your electricity supply, the number to contact remains 0800 7 838 838.

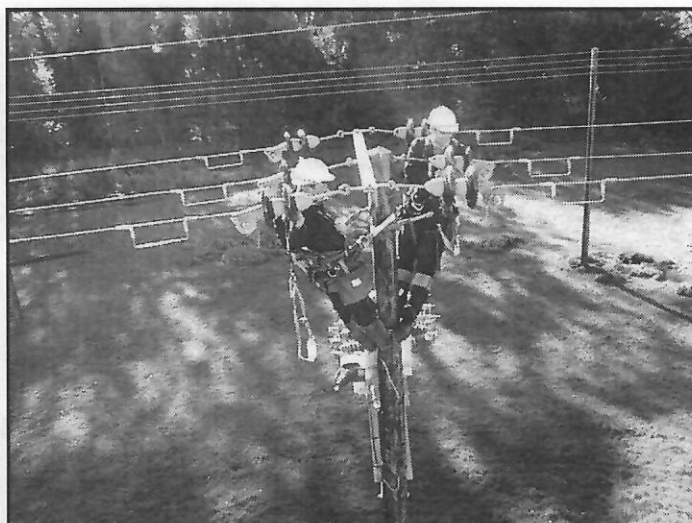


Photo from the Millennium Collection

24seven training training in Milton

## Milton 3rd Team Report

Milton 3rd's started the season by losing to Yelling 2nd's at their ground; heads down but only to bounce back the next week when we won against Longstanton, then going on to beat Fen Ditton in a cup match. Beating St Neots, Huntingdon, Willingham and then coming up against Yelling 2nd's again only this time to bowl them out for 97, not bad considering Yelling won the league only losing to Milton. We got the 98 runs required with 10 overs spare, Kirty not out for 51 and Graeme 24 runs, which took us to the dizzy heights of 2nd place in the League.

Unfortunately Milton's 1st and 2nd teams were not doing so well, which tarnished the 3rd team's success. After losing a player here and there we finished the season a creditable fourth.

I would like to thank all the players who played for the 3rd's for their commitment and support; a special thank you goes to Fraser Confrey for all his help.

*Bobby Newton*

## Local Cricketer has Successful Year

Milton's Darren Cousins plays professional cricket for Northamptonshire. Following seven years playing for Essex he signed a two-year contract with Northants this year and was rewarded with an impressive bowling performance.

He played in all 16 county matches and helped Northants to win the second division title. In the process, he took 67 wickets at a cost of 19.6 and only Australian internationals Glenn McGrath and Shane Warne took more wickets.

He has now been awarded a one year extension to his contract, received a double bonus, awarded his county cap and named Northants player of the year.

During his career he has had six major back and knee operations, but judging from his performance this year, seems to have overcome these problems.

Darren is a former pupil of Milton school and Impington Village College.

*M Spooner*

## Milton Cricket Club

The following were elected at the recent Annual General Meeting.

President	Frank Burling
Chairman	Peter Stoehr
Vice-Chairman	Jack Nayar
Treasurer	Phil Bone
Secretary	Chris Palmer
Asst Secretary	David May
Groundsman	Catherine Wesley
Asst. Groundsman	Graeme Newton
Fixtures Sec	David May

Representative to the recreation grounds management committee - Pauline Brindle

1st Team Captain	Phil Davies
2nd Team Captain	Bob Newton
3rd Team Captain	Sub Judice

If you would like to play for Milton Cricket Club in 2001 ring Chris Palmer.

Tel. 721095. The club with the finest facilities in Cambridgeshire.

## Cambridge Evening News

May we again thank the Cambridge Evening News for their continued support.

## BENET GARAGE MILTON

Opening times:- Monday to Friday, 8.30am to 5.30pm, Saturday 8.30am to 12.30pm

**BOSCH  
SERVICE  
AGENT**

**TEL. 420380**

**TYRESAVE  
CENTRE**

**M.O.T. TESTS WHILE YOU WAIT**

BY APPOINTMENT

**\*Ask about our unleaded conversion package\***

**Lubricare 1 Service**  
Change oil & filter  
Check fluid levels tyres and lights  
**£15 labour**

**Full Service**  
& Engine Tune  
**£60 labour**

**Lubricare 2 Service**  
As lube 1 plus fit new plugs and  
check all brakes  
**£35 labour**

**Bottled Gas Stockist**

**All prices plus parts and VAT**

**All Major Cards Accepted**

Printed by Cambridge Evening News, Winship Road, Milton, Cambridge, CB4 6PP

Produced and delivered by volunteers. Designed and published by Jane Coston, 67 Coles Road Milton Tel. 861655

Editors - Michael Spooner, Kate Marshall, Harry Capitain.