

# Milton Village View

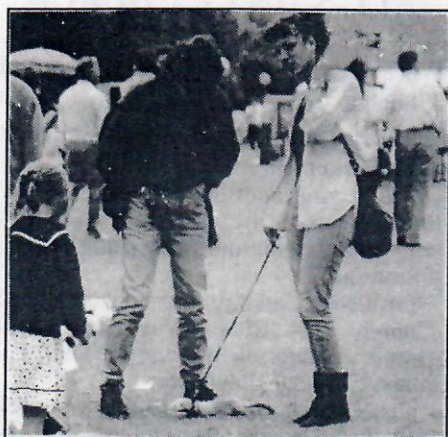
## Quarterly News Sheet

Delivered free  
throughout the  
village

Circulation of over 1,700

Autumn Issue - September 1992

Issue 4



Unusual visitor at Summer  
Fayre, A ferret on a lead.

## All The Fun Of The Fayre!

### Wot about the bunting then?

The rain held off but the wind blew and some very threatening clouds passed quickly overhead. Not that too many people were looking skywards. There was much too much to see on the Coles Road Recreation Ground. It was the 12 of July, it was the Milton Village Fayre and the tired (but still smiling) organisers waited to see if anyone would turn up. And you did! (didn't you? Where were you then?)

This was the first attempt for the Milton Scout Group Executive and the Friends of Edmund House, to jointly organise this event. A lot of hard work had gone into putting the show on the road. People had been persuaded to take on roles they might not normally have seen themselves doing. For instance look at the bunting (for the uninitiated, bunting is lots of triangular flags attached to a length of tape and used for decoration, giving colour and interest) numbers of ladies in Milton almost drove themselves mad cutting out the cloth triangles and Grace Richardson sewed them all onto 500 metres of tape, burning out her sewing machine in the process! I know I asked for two miles of bunting but I never thought we would get so much... ladies please accept my grateful thanks and, by the way, what are you doing next year?

The main concern when organising an event for the village, is knowing what the village wants. Should it be traditional, should it be "Thurstons", should it be a quiet, relaxing day for the adults, should it be geared to an all activity event for teenagers and children. Well, we chickened out, played the safe card and went for the lot. There was everything from coconut shies, golf games, beat the goalie and pony and trap rides to suzuki quad bikes, an inflatable velcro wall to hurl yourself at (did I see an upside down policeman!) a tunnel maze and ball pond and two bouncy castles! Most of the village organisations, societies and clubs were there in force to entertain or cajole us into spending some money. The folk from Edmund House, for whom the fayre is an annual opportunity to join in activities with the rest of the village and raise some much needed funds, were busy all day providing various activities to keep the public interested and having-a-go at other attractions too numerous to mention.

In the arena, the proceedings began with a superb, synchronized display of marching to music by the thirty strong team of majorettes from Ipswich. There was something happening in the arena or on the stage all afternoon (Tell me you didn't miss it. Oh! alright then) The Milton Morris Men danced, The Milton "Tang So Doo" Club karated each other, The Cambridge Academy of Music performed wonderfully, after a few nailbiting moments when the sound went, and then All Saints Church sang gospel music and performed some excellent street theatre, Fred Kilner giving a very good impression of a drill sergent major in the piece I saw. I wonder who cast him in the part?

Having exhausted yourself by all this, you could retreat to the mad hatters tea party, the Bistro, the bar, the bar-b-q. and relax, refresh yourself and start all over again.

I hope it was for you, (if you got there), what it was for me, an immensely enjoyable day spent with people I like to be amongst. To all those people who made it possible... Thankyou. To all of you who attended... Thankyou, and to those of you who missed it... see you next year. This is, after all, a village event for of the people.

*Ian Davis*

The Editors of the Village View congratulate all concerned on a job well done without whom there would have been no Village Fayre.

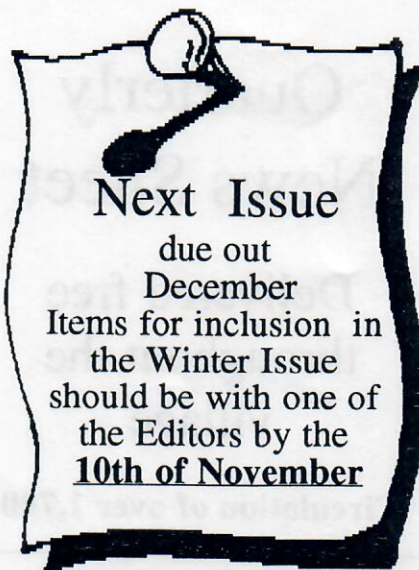
Milton  
Rowing Lake  
diversions of  
Fen Rd.

see page 7

Cambridge  
**Evening News**  
The Voice of Mid-Anglia

Now we are neighbours  
we're delighted to  
print your village newsletter





## Next Issue

due out  
December  
Items for inclusion in  
the Winter Issue  
should be with one of  
the Editors by the  
**10th of November**

### Thanks from Edmund House

May I, on behalf of residents and staff at Edmund House Group of Homes thank everybody who supported our grand Draw and stalls at Milton Fayre this year.

Either by spending money on the day, donating prizes, selling or buying draw tickets for us, your help and support is very much appreciated.

I am sure you will be pleased to know that Edmund House made a profit of £1,710.

A special thanks to Milton Scouts especially Ian Davis for ensuring that this event was a success.

*Ian May*

Edmund House Group of Homes

### WI

The local vet was our Speaker in June, who brought his dog with him, which he had nursed back to health having found it near to death, now its a blood donor!

In July we had some antiques?? valued by Mr David Palmer, and although we hadn't brought our really valuable items it was a very enjoyable evening.

We also presented the competition winner of the year Shield to Mrs Eileen Price.

See you on September 15, when our speaker will be talking on "Dealing with an Emergency in the Community" and the competition will be "An Emergency Item".

*M Daniels*

### "Grateful Thanks"

Through your pages I would like to say a few "Thank You's":

Firstly, to Reverend Fred Kilner for the truly lovely Church Blessing Service he gave for Sharon and Ufuk on 11th July 1992:

To my very good friend Rachel for the wonderful wedding cake:

To Georgina for the wedding buffet:

To Mrs Pearson for the lovely flower arrangements in the church:

To Shiralee for saving the day- re: dress:

To Karen for the lovely hair creations and,

To Gerry for his help and advice at the Community Centre.

A great day was had by all.

*Margaret Adamson*

## Milton in Bloom?

We look forward to  
entering the Village in  
Bloom competition due to  
be judged in May 1993

If you would like to help towards that goal and more importantly improve the amenities of the village by offering help as an individual or Village organization to plant an area with

### Daffodils and Nacissus

contact The Clerk to The Parish Council Jim Daniels Tel. 861447 or Jane Tel. 861655 as soon as possible for this planting season.

It is hoped that over the coming years more areas will be planted

**Please help**

## Country Park News

This year is rushing at a furious pace with the good weather both helping and hindering progress on the park. The lack of rain has caused great reductions in the lake water levels as well as restricting the growth of newly planted trees and shrubs. The sun has allowed us to make good progress on the car park which should open during September, meanwhile the visitors centre is beginning to rise from the ground as regular users will know the first two footbridges have been erected, with two further bridges almost complete movement around the park should soon become alot easier and now a call for help. Does anyone have any photographs, maps or memories of the site before it became a country park. We have some information but more is always useful.

See you in the park. *M Busby*

## ALL SAINTS' CHURCH

We sometimes read in the papers that Churches are being made redundant because of dwindling congregations. Not so in Milton!

The congregation at All Saints' increases week by week and we have a very enthusiastic and flourishing church fellowship.

On Easter Sunday, our ancient village Church was filled to capacity with people celebrating this very special day in the Christian Calendar.

The Church was beautifully decorated with flowers, and the children brought their traditional gifts of eggs.

Many thanks to all the people who made this Easter Sunday such a happy occasion, for me and so many others.

*Iris Chilton*

## "Thanks to Attles Apples"

Gwen Norman would like to thank Spencer and Karen of Attles Apples, the village fruit and veg shop, for their support in all local happenings, by displaying posters, giving prizes and donations, etc. Also more importantly for providing the village with a useful local amenity and hopes the support will be reciprocated.



**MILTON**  
**WOOL SHOP**  
 Wools & Haberdashery  
 Hand Knitted garments  
 Ladies & Childrens clothing  
 M A Taylor 4 Coles Road  
 Tel. 861247

**Betty's**  
 Uni-Sex Hairdresser  
 49 Cambridge Road  
 Tel. 420526

**FLORIE'S FLOWERS**  
 Local Delivery Same Day  
 Ring Daryl Tel 420720/862093

**M J POTTS**  
**HEATING & PLUMBING SERVICES**  
 28 Froment Way  
 Tel: 0223 440795  
 All Installations/Repairs undertaken  
 Approved CORGI Gas & TOTAL OIL Installer  
 Work Guaranteed  
**FREE ESTIMATES**



# Forthcoming Events

## Milton Country Park

Unless stated otherwise all walks start at the Community Centre, Coles Road.  
For further information contact **M Busby** Tel. (0223) 440196

### Volunteer Work

A chance for anyone interested to get involved in managing areas of the park for wildlife. Suitable clothing should be worn

**October 4th**

Scrub clearance and dead hedging to encourage wildlife



**Nov. 15th**

Opening up areas to sunlight for wild flowers

### Walks

**September 13th**

**Natures Harvest**

Looking at the different methods plants use to ensure their survival

**Start 2.30pm**

**October 25th**

**Autumn Stroll**

**Start 2.00pm**

**December 6th**

**Winter Wildlife**

**1.30pm**

### Watch Events

All events start at the **COUNTRY PARK CAR PARK**

**September 20th**

**Bird Games**

**Start 2.30pm**

**October 18th**

**start 2.00pm**

**Natures Superstore**

Fill a basket with goods from natures shelves

**November 15th**

**2.00pm**

**Woody Workshop**

Help manage the park for the benefit of wildlife  
These events are primarily aimed at children over 7 and last approximately one and a half hours. A small charge will be made and suitable clothing should be worn.

## Public Notices

### ALL SAINTS' SUNDAY SERVICES

**08.00 Holy Com.**

**10.30 Family Service**  
(Communion on 3rd Sunday)

**18.30 Evening Prayer**  
(Communion on 1st Sunday)

First Sunday after Family Service there is a

**"Bring & Share Lunch"**

Coffee is served in the Church Hall after Family Service  
Tea is served after Evening Prayer

Don't be caught on the hop,  
Come and visit our shop,  
After all the parking is free,  
With lots of gifts for you to see.

### Childrens Hospice Shop

Church Lane,  
Milton.

**Open Weekdays**

**10am - 4pm**

and from

**October to Christmas**

**Weekends 2pm - 4pm**

### The seventh Milton

## Craft Fayre

**Sunday October 25th**

**10am - 5pm**

Over 50 stalls of high quality crafts for you to enjoy. Refreshments and demonstrations all day

**Entrance 50p**

Accompanied children under 12 free.

### Pram Race

We are sorry that this event did not take place this year but we plan to run it again on  
**Easter Monday 1993**  
*D Wildman*

### Youth Club

**Re-opens 7pm.**  
**Monday 14th**  
**September**  
At The Community Centre

### Parish Council

Dates of meetings at the Community Centre, 7.30pm  
**Coles Road.**  
**5th Oct**  
**2nd Nov**  
**7th Dec**

### Halloween Dance

at  
**Community Centre**  
on

**31st October**

**8pm - Midnight**

**Live group - Food - Bar**  
for tickets Tel. Sue 861747  
or Lynn 861361





## WHAT IS A SENIOR CITIZEN?

A Senior Citizen is someone who was here before the Pill, Television, Frozen Foods, Credit Cards, Ball Point Pens and Computers! A chip meant a piece of wood, hardware was a type of shop which sold pots and pans, and software was an unknown word.

We were before Dishwashers, Tumbledryers, washing machines, microwave ovens and Electric blankets.

For us Timeshare meant togetherness, we got married first, lived together afterwards, and then had our children! We had no knowledge of Disposable Nappies, Convenience Food, Instant Coffee, Videos or Fast Food Outlets.

As teenagers we learned Ballroom dancing, and smoked cigarettes thinking it was daring and fashionable to do so. There were no football hooligans, and to be gay meant being the life and soul of the party, while Aids referred to Beauty Lotions, Grass was for mowing and pot was something used for cooking!

We are today's Senior Citizens. A hardy bunch when you consider how the world has changed in our lifetime and of all the adjustments we have had to make to keep up with the present times.

What does being a Senior Citizen mean to you?

Let me know in not more than 100 words.

*Iris Chilton* Editor

## THE ENTERPRISE CLUB

The Enterprise Club is a social club for the over 55's and is held between 2.00 pm and 4.30 pm on the 1st and 3rd Tuesday in the month, in the Church Hall in Milton.

We have a very friendly game of scrabble or cards and have three quarter size snooker tables which are well used by the ladies as well as the men. We play table tennis and darts and have a short session of "Keep Fit" to music which is not too strenuous and we enjoy it very much.

Recently the members have been to see the musical "Carousel", had a guided tour of some of the Colleges and a Picnic in Clare Country Park in Suffolk.

New members are always welcome, just come along to the Church Hall on the day. A charge of 50p includes tea and biscuits and a raffle.

Further information please phone

*Iris Chilton* 862381

**DRAINS UNBLOCKED  
NEW DRAINAGE WORK  
ALL GROUND WORK  
AND BUILDING WORK  
UNDERTAKEN  
C.H.LUMB TEL.0223 354402**

## MILTON AND WATERBEACH CHILDMINDING GROUP

Anyone who is a REGISTERED CHILDMINDER in Milton or Waterbeach, is considered to be a member.

We exist to give help and support to our members.

We meet informally round one of our members houses, where we discuss current issues, problems, and ideas connected with Childcare. We try and combine professionalism with humour, and a sense of fun.

All REGISTERED CHILDMINDERS are invited along to our next meeting, which will be in September, after the holidays.

We look forward to meeting you.

Please Telephone 861361 for further details.

\* \* \* \*

REGISTERED CHILDMINDERS are subject to stringent checks, through Social Services, to ensure their premises are safe and hygienic. They also check there is suitable equipment, (toys, books, etc), which enable the childminder to look after children in happy, comfortable surroundings.

Would you settle for anything less for YOUR child?

\* \* \* \*

If you are looking for a childminder in this area, please contact Lynda Molloy on 862093, who can advise you on vacancies with REGISTERED CHILDMINDERS.

\* \* \* \*

All other enquiries please contact me on 861361. *Lynne Twinn* Secretary

Contributions for our news sheet are always welcome.

Please try to keep within 100 words and no more than 200.

Thankyou for your support. *JC*

Please help  
protect children  
from danger by  
reporting  
any faulty play  
equipment to the  
Parish Council  
Parish Clerk Tel. 861447

## MILTON TOYBOX

Have you ever wished you could try out toys on your children before you buy them? Or are there toys your children would like to have but you don't have house room for, or you don't think they would be worth investing in? Milton's Toy Library could be the answer! We have a wide range of toys available for loan, suitable particularly for children aged 6 months - 4 years.

Membership costs just £1 a year and it is 40p or 50p to borrow a toy for two weeks. The Toy Library is open on the 1st and 3rd Thursdays of each month, 10.30 am - 12.30 pm, at the Community Centre. Why not come along and have a coffee with us and see what's available.

Calling all grandparents - how about borrowing some toys to have at home

when your grandchildren come and stay - gives them something "new" to play with, and you don't have to find cupboard space for toys after the children have left!



For more information contact:

Jo Sollars Tel: 862529

or Jackie Gray Tel: 862397

**Painter & Decorator  
Interior & Exterior  
High Class Decorating  
Free Estimates**

**R.P. Kent**

Tel. 0223

**860995**



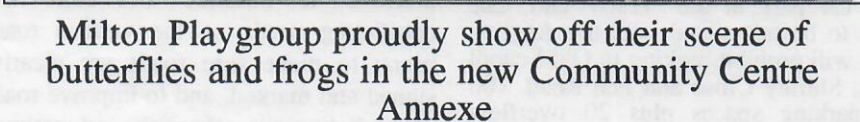
**ALAN LANGLEY  
CHARTERED BUILDING  
SURVEYOR**

Architectural Design,  
Planning/Building  
Regulation Applications,  
Supervision,  
Building Surveys and  
Reports.

**TEL. 440525 (Milton)**



## Lambs



## UNDER MY FEET

*Lindsay Hall*    Age 7

I can see slimy slugs and creeping spiders,  
I can run on a noisy drain, and twigs that snap  
when you stand on them,  
I walk on soft grass,  
The flowers grow into tall big flowers,  
Sometimes I walk on concrete,  
Sometimes I walk on grass,  
Sometimes I walk on flowers,  
Sometimes I walk on leaves,  
I must be careful not to tread on these,  
Just in case they tread on me.

*Ruth Strickland*    Age 7

A nice little snail is under my feet, I'd better be careful or I might step on him and I really don't want to kill him and he's on some nice soft grass. It's nice and crackly and I also meet a little creeping crawly, he says to me "Please don't stand on me", and I move on. Now I'm standing on the playground it's very very rough and I go back to my house and I stand on some stones they are bumpy. Then I stand on some soil it's just like mud - oh gosh - it's my bed time, so I'd better go to bed.

*Katherine McNamara* Age 7

**Tel. 861205     1 Butt Lane**

**Your Milton  
Domestic and  
Industrial Specialists**

**Tel. 861869**



## Congratulations

to

### Frazer Confrey

for being voted the most  
efficient football club  
secretary in the area

\*\*\*\*\*

Congratulations also to the

### Day Family

for winning the

### Fun Bowls Trophy

beating 23 other village  
groups and clubs in the  
this annual event

\*\*\*\*\*

### Netball Club Congratulations on becoming Champions

of the

**Cambridge and District  
Netball League.**

### Netball

Sue Horrod 73 Cambridge Road Milton (Tel. 420010) is the secretary of the Netball Club, and she would be pleased to hear from any newcomers to the village who might be interested in joining.

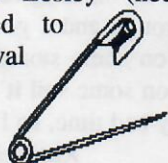
### Children In Need Appeal 1992

Thankyou for your support in 1991. The netball and football clubs will be clowning around again this year so be prepared.

*Sue Horrod*

## Births

**DUFFY, Paul and Lesley** (nee Davidson) are pleased to announce the safe arrival of Jack on Monday, 6th of July 1992 a brother for Karis.



**Births Deaths and Marriage notices**  
are free until further notice -

Contact an editor

### Notice

Milton Village View is unable to check or verify the warranty's authenticity of or representations made by their advertisers and must therefore exclude liability howsoever arising from any advertisements in this newspaper. Nor do any statements necessarily accord with the opinions or beliefs of the Editors, Milton Parish Council or Milton Village View.

## Planning Applications received

### Dentist

An application for a dental surgery at 41 High Street  
**Golf Driving Range**  
and nine hole driving range at Penfold Farm, Ely Road.

### Lanfill site

Arrangements for gas including Generating Electricity

## NEWS FROM THE PARISH COUNCIL

### COUNTRY PARK UPDATE

A Visitor Centre and separate toilet block (with full access for the disabled) will be built between July and March 93.

There will be a shop within the Visitors Centre which the Cambs and Beds Wildlife Trust is interested in managing.

40-50 fishing platforms have been built and fishing rights will be leased to an Angling Club. Milton residents will pay a reduced rate of membership.

An Assistant Ranger has been appointed and a Seasonal Ranger will be appointed in 1993.

Horses will be allowed on an identified route but galloping will not be allowed.

Pedestrian access only will be allowed at all entrances except the main entrance with car park at the 'Tesco' end. The lease to be negotiated with the Angling Club will prohibit parking in Old School Lane, Shirley Close and Fen Road. 100 car parking spaces plus 20 overflow spaces will be available by Summer 1992.

**APPOINTMENT OF CHAIRMAN :** Mr D T Wildman was appointed Chairman of the Parish Council and Mr R T Summerfield Vice-Chairman.

### COMMUNITY EDUCATION PATCH PLAN 1992-1995 :

Milton is included in the 'Pepys Patch' which also serves the other villages including Histon, Impington, Girton, Oakington and Madingley. The purpose of the 'Patch' includes the encouragement of personal development of adults and young people in terms of intellectual, practical, creative and physical skills and the development of community activities. The Patch Plan sets out an action plan over the next three years. A feature of the activity in Milton will be an enhanced provision for Youth work.

### CHARTERS

The County Council Citizen Charters for public transport, road safety and road planning have been received.

Some points from these Charters include:

**Public Transport:** Priorities are to protect essential links to main centres and market towns from surrounding villages; to protect links from residential areas to places of work and to shopping, medical, educational establishments and recreational centres.

**Road Safety:** The objectives of the County Council are to reduce the overall level of road accidents in the country; to improve the safety of sections of road with known accident problems; to achieve a balance between the conflicting needs of the various road users; to make sure roads are clearly signed and marked, and to improve road user behaviour through education, training and publicity.

**Road Planning:** Individual highway schemes are identified with reference to the degree to which roads are overloaded with traffic and the current level of accidents and environmental problems. A road scheme is given priority depending upon compliance with the Structure plan; the need in terms of highway capacity and accident problems; value for money and the effect on the environment..

All of the Charters define the times in which the various departments should respond to consumer enquiries and also detail the complaints procedures.

*M Spooner*

## IGM BUILDING SERVICES

**EXTENSIONS ALTERATIONS  
HOME IMPROVEMENTS  
WALLS & PATIOS**

FREE ESTIMATES & ADVICE  
MILTON  
CAMBRIDGE  
TEL. 440126

**IAN G MARNOCH**

## HOWARDS WAY

- \* For all Driving Instruction
- \* Beginner to Test Standard
- \* Motorway Instruction

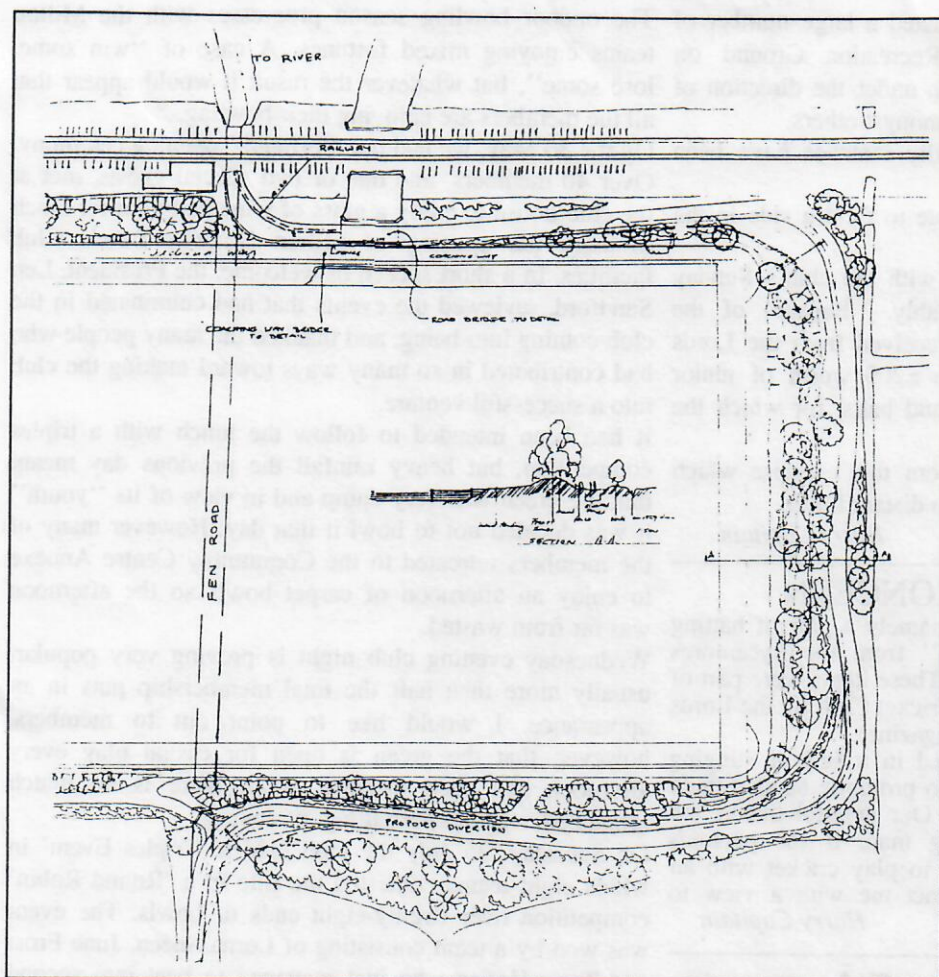
DOT.ADI.CAADI.DIA.

TEL. Cambridge  
(0223) 862501

193 The Rowans, Milton, Cambridge.



# PROPOSED ROWING LAKE AT MILTON



A Rowing Course of International standard is proposed for Milton. The course, 2200 metres long and with 8 lanes, is under consideration. It will follow the line of the Cambridge to Ely railway track on the Milton side of the line and requires the diversion of Fen Road, near the level crossing.

Access roads are planned to be from the Ely Road at Milton and from the Car Dyke Road at Waterbeach. 'Limited Access' only will exist from Fen Road.

A canal link will be constructed from the Cam to the Rowing Lake which will pass under the railway line near the level crossing in Fen Road. This will allow passage, albeit with narrow headroom, for boats to be rowed straight on to the lake.

Some paddocks exist on the lake site and these will be relocated.

Other features include the construction of a boathouse and the provision of footpaths and bridleways.

The first phase of development will include the construction of the lake and essential roads and tracks, landscaping and long term tree planting. The remaining work will be carried out as funding is made available.

The illustrations show the proposed scheme and the diversion which would be necessary in Fen Rd.

## Parish Council Objects

The Parish Council believes that the proposal to build the lake is contrary to the Milton Local plan (it is in an area of Important Landscape), the Cambridgeshire Structure Plan and the Cambridge Green Belt Local Plan (which permits development only where it will not adversely affect the rural and open nature of the area).

The parish council therefore recommends refusal of the proposed lake.

If the scheme is passed, however, a number of conditions are requested, including:

- The retention and protection of Fen Road and the area from Baits Bite Lock to Fen Drift. These are important areas of countryside.
- No further traffic on Fen Road even during large scale events.
- Heavy plant access should be via A10 and not through village.
- Fen Road width to remain the same even if diverted.
- Access road at Car Dyke, Waterbeach to be provided at an early stage.
- The canal bridge should enhance and not detract from the area.

The scheme is not objected to by Waterbeach Parish Council and no objections have been tabled by:

Department of Transport  
National Rivers Authority  
Conservators of River Cam  
Min of Agriculture  
Cambridge Ramblers Association

The scheme is supported by:  
Chief Planning Officer Cambridge City Council  
Eastern Council for Sports and Recreation  
Council for the protection of Rural England

Objections have been lodged by a majority of Fen Rd and Baits Bite Lock residents, Milton Parochial Charity, a resident in Waterbeach and Councillor Jim Fisher.

The planning application is for a change of use of the land (to a rowing lake) and is accepted in principle by South Cambs. District Council provided:

- Vehicular access is discouraged in Fen Road
- The archaeological importance of the site is protected
- Agreement is reached on public access
- A strategy for investigating drainage is agreed
- Agreement is reached on the management, maintenance and if necessary the restoration of the site.

M Spooner

## To be or not to be That is the question!

Where can you find a peaceful spot where Ladies Smock (cuckoo plant) and Ragged Robin usually only found in reserves, grow in abundance along with other wild flowers filling the fields with colour in spring? Where is this area that is also the home of bats, owls, woodpeckers, Grasshopper-warbler birds, mountjacks and butterflies? Well it is an area surrounded by willows and ash over 100 years old and belongs to a gentle man who looks forward to the return of the swallows to his barn each year and does not cut down the nettles when the butterflies are laying thier eggs.

Unfortunately it lies in the middle of the area destined to become a rowing lake. "I will not sell", says Colin Corcoran, "I feel I am luckier than an owner of a Constable painting as I can sit in mine and it changes every day with the oncoming winter and autumn leaves, the spring flowers and the wildlife visits". He feels it is an area of outstanding beauty peace and quiet, one of the last remaining areas of undeveloped Milton that could not be replaced.

Jane Coston



## CRICKET CLUB COLTS

This section of the Cricket Club has attracted a large number of Milton youngsters to the Sycamores Recreation Ground on Wednesday evenings. Instruction has been under the direction of Ray Scott, Dai Evans and Steve McHugh amongst others.

In addition to net practice, several friendly matches have been played against other village sides.

It is hoped, that next year, we shall be able to field a side in the C.C.A's under 15's league.

One or two of the lads have had games with the club's Sunday Social Side, and have performed creditably. Because of the formation of the colts section, we have received from the Lords Taverners a cricket bag containing some £200 worth of junior equipment comprising bats, pads, gloves and balls, for which the cricket club are most grateful.

Several bright prospects are emerging from this exercise which augurs well for Milton cricket in the not too distant future.

*Harry Captain*

### TO WHOM IT MAY CONCERN

Very recently some cricket equipment, namely a pair of batting pads and a cricket bat, was "borrowed" from the Sycamores Pavilion by a person or persons unknown. These items were part of a £200 gift of colts gear given to Milton Cricket Club by the Lords Taverners (as reported elsewhere in this magazine).

The bat and pads were found abandoned in a bed of stinging nettles in Coles Road, by a young boy who promptly handed them over to Bill Wiltshire at the Post Office. Our grateful thanks are extended to Bill and also to the young man. If the person/s "borrowing" this equipment would wish to play cricket with an easy conscience, would they please contact me with a view to joining Milton Cricket Club next season.

*Harry Captain*

## OUTDOOR BOWLS CLUB

The outdoor bowling season progresses with the Milton teams enjoying mixed fortunes. A case of "win some, lose some", but whatever the result it would appear that all the members are enjoying their bowling.

On the 30 May, we had our "official" opening ceremony. Over 40 members, and one or two special guests, met at the club house to enjoy a glass of wine and a buffet lunch to mark the opening of Milton Outdoor Bowls Club facilities. In a short speech of welcome, the President, Len Sandford, reviewed the events that had culminated in the club coming into being, and thanked the many people who had contributed in so many ways toward making the club into a successful venture.

It had been intended to follow the lunch with a triples competition, but heavy rainfall the previous day meant that the green was very damp and in view of its "youth" it was decided not to bowl it that day. However many of the members retreated to the Community Centre Annexe to enjoy an afternoon of carpet bowls so the afternoon was far from wasted.

Wednesday evening club night is proving very popular, usually more than half the total membership puts in an appearance. I would like to point out to members, however, that the green is open for casual play every afternoon and each evening, when there is no match scheduled, weather permitting, of course.

On Saturday, 25 July the club held a 'Triples Event' in which eight teams contested the title in a 'Round Robin' competition over twenty-eight ends of bowls. The event was won by a team consisting of Lorna Sheen, June Frost and Tony Hodge who just managed to beat into second place by one shot, the team of Len Sandford, George Maggott and Doug Wright. Small trophies were presented to the winners and runners-up to mark the occasion.

Once again, can I say, if anyone is interested in joining Milton Outdoor Bowls Club, or just having a try out to see if they might like the game, then please get in touch with me.

*Godfrey Sheen*

Tel: 861765

### Milton F.C. amongst Cambs F.A. awards

Frazer Confrey of Coles Road, long-serving secretary and player of Milton Football Club, has received a personal cheque for £100 together with an appropriate plaque from the Cambridgeshire Football Association. Frazer received the vote from the F.A. as being the most efficient secretary of all clubs under their jurisdiction in the County.

The club also received a cheque for £50 in recognition of the reserve XI finishing the 1991/1992 season as Division 4 Champions of the Cambs League.

*Harry Captain*

## BENET GARAGE

### M.O.T TEST CENTRE

**Crypton Engine Tuning**  
With computer enhanced printout

**Lubricare 2**  
**Lubrication Service**  
Oil & Filter change  
All Fluid levels topped up

Plus  
"Health Check" and written report.

**£38.95**

price inclusive of parts, labour & VAT

**Tel. 420380**

**Lubricare 1 £16.95**

Engine Oil & Filter Change  
(price inclusive of labour & VAT)

**Full Air Conditioning service**  
**available**

**Calor Gas & Lucas Electrical**  
**Stockists**

**Paraffin & Diesel**  
**Thanks to all our customers for**  
**their continued SUPPORT**

**All Repairs and Servicing to any**  
**make of vehicle**

**Monroe Shock Absorbers**  
**Authorised Centre**

**Lubricare 3 Major Service**  
**Lubricare 2 - "Plus"**

Engine tune up; New spark plugs;  
New contact points; timing; OHV  
Tappets; Carburettor Adjustments;  
New air filter & Road Test.

**£69.95**

Price inclusive of parts, labour & VAT

Designed and published by Jane Coston, 67 Coles Road Milton Tel. 861655  
Editors - Michael Spooner, Iris Chilton, Harry Captain, assisted by Kim Potts