

# Milton Village View

Established 1991



Summer Issue No 58 - June 2003

Village News Sheet

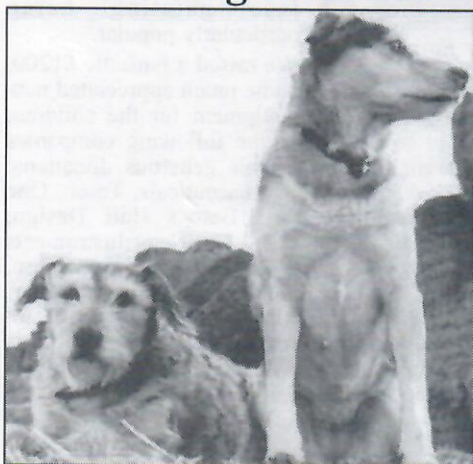
Delivered Free Circulation 1,800

Sewage Works Complaint Form Page 3

Whats On  
News in Brief  
Competition

Page 3  
Page 2  
Page 7

## Lost dog returned to owner



Fuzz - pleased to be home with her puppy Nip

thanks to all  
the  
concerned  
residents who  
contacted us

Fuzz, the lost dog featured in the last issue has at last been reunited with her owner Rich, who is delighted to have her home. Fuzz had been on the loose for some time. Her owner Rich said, "Fuzz is now getting quite old and has had

several bids for freedom in the last year, this one being the longest. She was found sleeping in a greenhouse thanks to Jane and several residents from Fen Road.

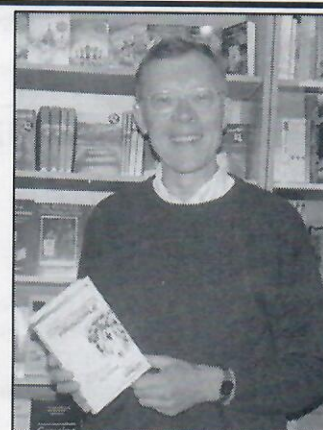
"After a bath and couple of days she seemed to lose her feral quality. She has other canine family in Somerset, and has nice place with a large garden and a warm fire waiting for her to retire to. Her mother was a Dougal look-a-like and was a stray collected at Glastonbury Festival in 1986. The father was a chap called Wilkins, a dog that sired untold puppies in the Mill Road area of Cambridge. This dog would take itself to the Boatrace Public House to entertain the patrons with its ability to throw fag butts for itself, then round them up. Fuzz has some of this quirky misbehaviour and has spent most of her time with her offspring Nip, (who also shares the same father).

"They are recognised in many towns in the country, as they have been enthusiastic stick collectors at music events and festivals for ten years. They have been P.R./security for a market stall from Lancaster to Penzance."

The Village View and Rich would like to thank everyone who helped find Fuzz including the lady who contacted us with a possible location for Rich.

## Rev Ian Cowley moving to a new parish

The Rev. Ian Cowley who has been Rector of All Saints' Church, Milton for 9 years will be moving to the parish of Yaxley, near Peterborough this summer. His last Sunday in Milton will be July 20th, when a farewell barbeque will be held after the morning service. We wish Ian, Alison, John & Grace the very best for the future and give thanks for their time here in Milton.



Rev. Ian Cowley

## Milton Community Minibus



Rob Farrington receiving the keys to the new minibus

On 2<sup>nd</sup> May 2003 Milton Parish Council took delivery of an LDV minibus with 16 passengers seats. Funding has been provided over a two-year period by: -

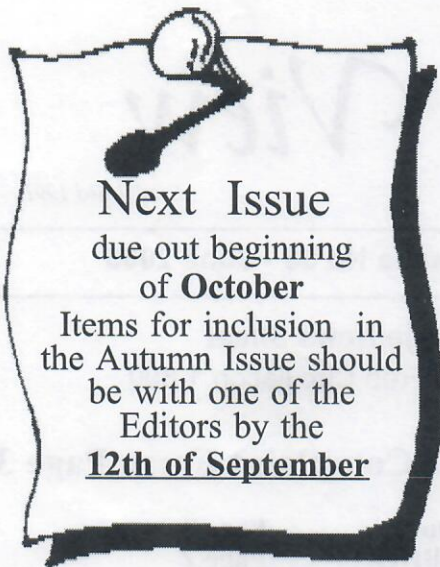
£10,000	The Countryside Agency (Vital Villages)
£6,000	South Cambridgeshire District Council
£7,265	Milton Parish Council
£6,832	Voluntary work (in kind)

Continued on page 2

## Supported by



brilliant people running world  
class utility services



## Next Issue due out beginning of October

Items for inclusion in  
the Autumn Issue should  
be with one of the  
Editors by the  
**12th of September**

### Send Us Your Stories

to 67 Coles Road or by e-mail to  
[vv@miltonvillage.org.uk](mailto:vv@miltonvillage.org.uk)  
We are also on the web at:  
<http://www.miltonvillage.org.uk/>

### Milton Community Minibus

*Continued from page 1*

The minibus will be available for hire to all organisations/groups within the Parish of Milton and the surrounding area. Charges for hire are: -

- 60p a mile for the first 50 miles (50p for Youth organisations) then 45p a mile.
- A minimum charge of £8 per day.
- Special rates may be negotiated for longer or regular bookings.

Drivers will have to undergo a familiarisation test and sign a declaration regarding their driving licence details etc. In some cases a driver can be provided at extra charge.

For more details contact the bookings co-ordinator on 01223 511668 or e-mail [minibus.booking@miltonvillage.org.uk](mailto:minibus.booking@miltonvillage.org.uk) or visit the village website at <http://www.miltonvillage.org.uk/minibus>

*Bob Waters*

### A Big Thank You

Thanks to everyone who donated their Computers for Schools vouchers to Milton Pre-School. Over 23,000 vouchers were collected, this means the Pre-School has enough vouchers for a computer and software!

### Red Cross Collection

A special thanks to all those who recently gave generously to the Red Cross collection, during Red Cross week at the beginning of May. A total of £716.09 was collected which will be used for local and international Red Cross projects. Special thanks to all the local collectors who gave their time to collect for this very worthy cause.

If anybody would like to consider helping next year please contact Chris McDonald on 235320.

### Royal Visit to Hospice

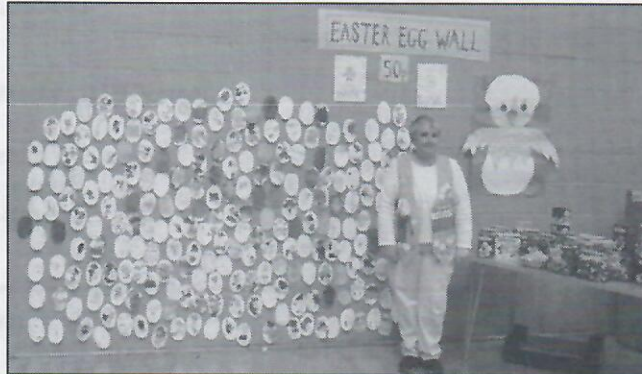
On the morning of Monday the 23rd June 2003, HRH The Princess Royal will be visiting East Anglia's Children's Hospices, to officially open the Education, Training and Research Centre. For security reasons, we have been advised by Buckingham Palace that some of the village roads will need to be cordoned off. EACH would like to apologise for any inconvenience that may be caused. If you have any concerns or queries, please contact Mrs Karen Beckett, PA to the Chief Executive on Cambridge 860306.

### Easter Fayre raised £1200 for Cygnet

The Cygnets Milton Pre-School Committee held this year's Easter Fayre on Sunday 13th April in the Village Community Centre. It was very well attended and everyone had a great day with the Easter egg wall, raffle, tombola and face painting being particularly popular.

We raised a fantastic £1200, which will go towards some much appreciated new books, toys and play equipment for the children. We would like to thank the following companies for supporting us with their generous donations: Amgen, 3i Plc, Napp Pharmaceuticals, Tesco, One Stop Convenience Store, Betty's Hair Design, Harmony Hair, Kernow and Co, Cecil Instruments Ltd, Maple Veterinary Surgery, Sunclose Farm, Cambridge Vending, Cambridge Building Society, Milton Precision Engineering, Ridgeons Ltd, Anglia Gifts and Promotions, Cambridge Arts Theatre, Imperial War Museum Duxford, Unwins Seeds Ltd and Warner Village Cinemas.

*Alison Cooper*



*Vanessa with the Egg Wall at the Easter Fayre*

### Vacancy for cleaner

The Youth Building at the Sycamores Recreation Ground will be requiring a cleaner from the end of July onwards for one hour a day, (either) in the morning or the evening.

This is not a difficult building to clean and the rates of pay are very good.

Any enquiries please contact Sue Horrod at the Community Centre (01223 862763)

### Cambridge Sewage Treatment Works

Anglian Water would like to apologise to both customers and neighbours for the odour problems in Milton recently.

Last summer a forum was convened of local councillors, environmental health officers, and representatives from Milton Parish council. The aim of the forum was to establish lines of communication through which Anglian Water could hear the concerns of the local community and feed back on the actions it was taking to reduce the odour coming from the works. We did a lot of work last year to reduce the odour coming from the sewage works. This included installing odour neutralising sprays along the boundary of the works with the A14, manufacturing new covers for part of the process and removing a biosolids treatment plant from the site.

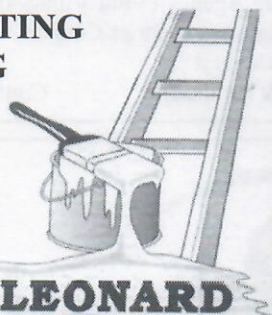
This year on the basis of extensive odour surveys that have been carried out, we are installing two odour-scrubbing units on the site. Unfortunately, we can not promise that the sewage works will never smell. This would be impossible due to the nature of the product we deal with. However, we will continue to strive to keep the odour levels to a minimum.

If you have any issues you would like raised at the local forum you can do this by contacting your local councillors. Alternatively, you can contact Anglian Water on 08457 145 145.

*Ian Rule Anglian Water*

### PAINTING DECORATING GLAZING

Mobile  
07860 453533  
Phone/Fax:  
01223 700800  
(local resident)



**B.J. LEONARD**

### Bettys Hair Design

Professional Hairstyling  
For Men and Women  
Tel: 01223 420526

49 Cambridge Road, Milton, Cambridge CB4 6AW

### HARMONY

Hair & Beauty Salon  
6 High Street, Milton, Cambs.  
Tel. (01223) 863636

Hair, Beauty, Reflexology, Aromatherapy, Physiotherapy

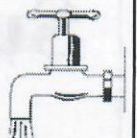
### M J POTTS HEATING & PLUMBING SERVICES

17 Headington Drive, Cherry Hinton,  
Cambridge, CB1 9HE  
Tel: 01223 242544

All Installations/Repairs undertaken

Approved CORGI Gas  
& TOTAL OIL Installer

Work Guaranteed  
FREE ESTIMATES



The Cygnets, Milton Pre-school presents the

Milton Village Fayre  
**FAMILY SUMMER DISCO**

Saturday 12th July 2003  
7.00pm - 11.00pm

Milton Community Centre

children's bar, cash bar, raffle, lucky dip, disco  
face painting

Tickets available from:  
Milton Pre-school - Community Centre Annex  
Cambridge Building Society - High Street,  
Milton Post Office, Coles Road, Milton

**MILTON SUMMER FAYRE 2003**

AT COLES ROAD RECREATION GROUND

SUNDAY 13 JULY 1 P.M. - 5 P.M.

-----  
**Village Fayre - Stalls**

You are invited as a member of Milton community to participate in the Village Fayre.

You may wish to advertise your group or club by having a display stand, or you may like to take the opportunity of running a stall, organising a game or activity to raise funds. Each pitch costs £5. Any charity/group can have a stall you do not necessarily have to be a village group.

If you would like to have a stall at Milton Village Fayre please contact the Community Centre office for a form. Tel. 862763.

**MILTON W.I. PROGRAMME 2003**

17<sup>th</sup> June Enigma by Beryl Lawry  
15<sup>th</sup> Jul Outing

**Summer Fair**  
at  
**Barnabas Court**

Saturday 21<sup>st</sup> June  
from 11.00 am

Home-made cakes  
Bric-a-brac, gifts & crafts  
plants, raffle,  
books & CD's,  
tea & coffee

**Milton Country Park Events**

Saturday 26th July.  
**Music Event**  
2 - 9.30pm

A full day showcasing the best of Cambridgeshire's up and coming talent in pop and rock music, free entry. This has been organised by 'The Junction'.

There will be refreshments and a Bar.

13th, 19th, 26th & 27th Aug.  
**Children's Summer Holiday Activity Days**  
10 - 3pm

A mix of environmental activities; sports and arts to help children to explore the world around them.

Cost: £7.50 per child, per day, aged 8-11

Sunday 31st August  
**Words and Music**  
2pm

String quartet and a folk band with the breaks in between being filled by storytellers.  
Free.

For details contact the Rangers on  
01223 420060.

**Sewage Works Smell Complaint Form**

Milton Parish Council and your local councillors have for some time now been complaining about the increase in the smell over the past 2 years that has been coming from the sewage works. If you would like to help by complaining, please fill in the form below and return it to one of our collection points: the post office, Coles Road, the Cambridge Building Society Milton Community Centre and Country Park Visitors Centre or post to 67 Coles Road, Milton, Cambridge CB4 6BL

**REGISTER YOUR PROTEST NOW!**  
South Cambridgeshire District Council are considering taking legal action against the sewage works so the more proof we have that there is a problem the better! If you would prefer to write a letter, please do.

Please encourage your neighbours to return the forms (photocopies will do) - you may even wish to collect the forms in your street. Visitors to Milton are also eligible to complain.



**Milton Sewage Works**

We the undersigned wish to register our complaint about the increase in smell from Milton Sewage Works that we have had to suffer over the past 2 years.

Name \_\_\_\_\_

Signature \_\_\_\_\_

Name \_\_\_\_\_

Signature \_\_\_\_\_

Name \_\_\_\_\_

Signature \_\_\_\_\_

Name \_\_\_\_\_

Signature \_\_\_\_\_

ADDRESS \_\_\_\_\_

Comments:

**I.G.M**  
CONSTRUCTION

**I. G. MARNOCH**

Montrose House, Ely Road, Waterbeach, Cambridge  
Phone 01223 441717 - 07050 251433

EXTENSIONS  
GARAGE CONVERSIONS  
LOFT CONVERSIONS  
RENOVATIONS  
NEW HOUSES

**FROM PLANNING TO COMPLETION**



**MILTON GAS SERVICES**

**Eddie Kikas**

29 Landbeach Road, Milton

Tel./Fax: (01223) 861810

Mobile: 07831 228181

Servicing, Installation & Repairs to all  
Gas Boilers, Fires, Cookers,  
Central Heating Systems etc.



Corgi Registration  
Number 161938

**GODDEN AUTO SERVICES**

All makes - service and repairs  
**CITROEN AND TOYOTA SPECIALIST**  
SERVICING, CAMBELTS, REPIPING, CLUTCHES,  
NEW CHASSIS, BRAKE OVERHAUL, WELDING,  
ELECTRICAL FAULTS, ABS, INJECTION  
SYSTEMS ETC.

CALL NOW FOR FRIENDLY ADVICE OR QUOTE

UNIT 13 CAVE IND ESTATE

FEN ROAD, CHESTERTON, CAMBRIDGE

TEL: 01223 425125

MOBILE: 07831 817981

**MILTON RESIDENT**



## Open Studios Event

### Milton Artist – Alison Hullyer

For the eighth consecutive year, local artist Alison Hullyer, will be taking part in the forthcoming 'Cambridge Open Studios'. Her studio will be open on 12th & 13th July and 19th & 20th July from 11am to 6pm. Visitors will be able to see a large range of work including framed and un-framed limited edition prints and paintings. Her recent collection of small contemporary oil paintings, based on French landscapes, the Suffolk seaside and imaginary flowers have proved very popular. There will also be a selection of handmade cards, published greetings cards and wrapping paper for sale, all at reasonable prices.

Come along and see the artist at work. Alison will be happy to explain the various print-making techniques and demonstrate her etching press in action.

Alison's studio is at Smallstone, Hall End, Milton. Telephone: 862974.

Booklets listing all 250 artists participating in Open Studios this year will be available in June. Details also available at <http://www.camopenstudios.co.uk>.

Cambridge Open Studios exists for the purpose of promoting the making of original works of art and craft and to provide an opportunity for the public to become involved in the arts by meeting artists in their studios, seeing their work and how it is produced.

## Milton Cycle/Footbridge

Work is progressing now with contractors preparing to build the southern ramp. The main steel structure will arrive in sections soon ready to be welded together on site. The A14 is expected to be closed on the weekend of the 13th - 14th September to allow the bridge to be wheeled across the A14 into position. The structure will be lifted by four computer controlled transporters, each with 24 independently controlled wheels. The contractors are thinking of providing a viewing platform for anyone wanting to watch this event. Once the main structure is in position the northern ramp will be built.

Milton website at:

<http://www.miltonvillage.org.uk> site has a link to the contractors Web site where you will be able to find up to date information on the progress of the work.

*Jane Coston*

## Lunch Club

We are back in business after a fortnights break for Easter. Lunch Club is so much part of my life that I can't really let go even on holiday, I am always working things out which would benefit the club, for instance, now we are trying to raise funds for a dishwasher. Because we are all living longer, therefore there are more special birthdays, which means a five course lunch, so more dishes to do. These lunches are very special and we enjoy organising them, at least I hope we do. It is interesting to note that some of us who have had one special birthday i.e. seventy or eighty years are now coming up to their second round! It would be nice if we could carry on until 2005 when we can celebrate a quarter of a century of All Saints Lunch Club, with a really special 'do' or is that expecting too much. There will be an outing to Lowestoft on July 2<sup>nd</sup> for the senior citizens of Milton.

The PRIME Team

## Greening Your Garden



Photo - Phil Mynott

*Berenice with her winning design*

Berenice Termote, aged 10 (pictured), a pupil at Milton Primary, took part in a special competition to design a compost bag. Berenice's design was overwhelmingly chosen as the winning entry and will be appearing on bags of compost for sale at £2 per bag throughout Cambridgeshire at the County's Recycling Centres.

The high quality compost, produced from organic garden material collected at the sites, is processed by local company Donarbon and conforms to the new PAS100 quality standard.

## Jubilee Holm Oak and Plaque

To celebrate the Queens Jubilee the Parish Council planted a Holm Oak near the war memorial in Coles Road. They also commissioned a plaque which has now been installed in front of the tree. The plaque was carved by Louise Tiplady, a stonemason who was brought up in Milton.

## Eric Pranklin

trading as

## Pete's Quality Meats

1a Arbury Road, Cambridge

**FRESH**

MEAT

FISH

CHEESE

DELICATESSEN

SPIT ROAST CHICKEN

BARBEQUES CATERED FOR

Prize winning sausages

**FREE** delivery in Milton

Tel: Eric 01223 352853

## Friends of Milton Country Park News

A local illustrator has produced a set of drawings of the park for us which will be appearing soon in a new nature trail. Friends membership is now free, look out for membership forms appearing in local places or join online at

[www.miltonvillage.org.uk/fmcp/](http://www.miltonvillage.org.uk/fmcp/).

### Ten things about Milton Country Park

1. It was opened on 26th May 1993.
2. The deepest lake is 'deep pool' at 30m.
3. A thick 'clay cap' over in-filled pits makes it hard to establish new trees.
4. The lakes were dug out for gravel extraction from 1930 to 1960's.
5. Todd's Pit is named after the previous manager and used as a private fishing lake.
6. The park has about 30 resident bird species with a further 30 annual visitors.
7. A traffic counter in the car park, counted 8000 cars in April 03.
8. The Rangers work with about 1000 school children each year.
9. The Visitor Centre has won an award for its design.
10. It is the only council owned park in South Cambs.

Theresa Feetenby

### Notice

Milton Village View is unable to check or verify the warranties, authenticity of or representations made by their advertisers and must therefore exclude liability howsoever arising from any advertisements in this newspaper. Nor do any statements necessarily accord with the opinions or beliefs of the Editors, Milton Parish Council or Milton Village View.

## MILTON POST OFFICE

CARDS	SHOE REPAIRS
CONFECTIONERY	PHOTO COPYING
DRY CLEANING	FAX SERVICE
STATIONERY	GIFTS

2 COLES ROAD MILTON

Open: Mon - Fri 9.00am. to 5.30pm.  
Saturday 9.00am. to 12.30pm.

Painter & Decorator  
Interior & Exterior  
High Class Decorating  
Free Estimates

R.P. Kent

Tel. 01223

860995



## MILTON WINDOWS

TALKING PAPERS

CALL THE COMPANY THAT CARES

Specialists In Replacement

- Windows • Doors
- Conservatories • Facias In
- PVCu • Hardwoods
- Aluminium • Etc.
- 21 YEARS EXPERIENCE IN THE INDUSTRY •



**CAMBRIDGE**  
**(01223) 440376**

FAX (01223) 860284

The Brambles, Green End, Landbeach, Cambridge, CB4 8ED

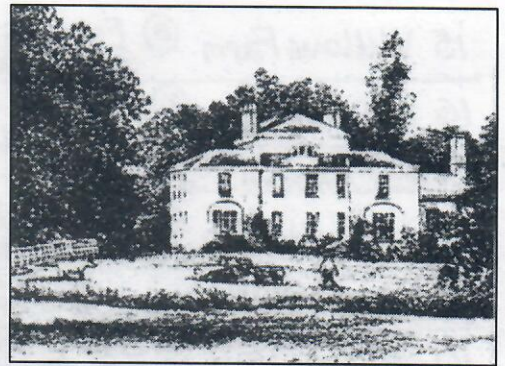
• QUALITY COSTS NO MORE •

# Milton 1900 to Modern Times

(The first of four parts)

This study of the houses present in the village during the first half of the last century is an attempt to list the heads of the families in occupation during that period and, in some cases, up to the present time.

This information has been collated from various lists, censuses and electoral roles, housed at the County Records Office at Shire Hall Cambridge, and many local advisors of which Edward Easy, the late Harold Easy, Roger Day, Robin Rose, Elizabeth & Joyce Moule, Edwin Mortlock, David & Beryl Waterson, Evelyn Cooper, Derek & Joan Haird, Don Shipp, Joan Bradley, Violet Barton, Valerie Rayner nee Warner, Shiela Gates and twin Audrey nee Poole have been especially helpful.



Drawing of Milton Hall  
(from the deeds)

## LANDBEACH ROAD

1 Rectory Farm	(a) Arthur Ison (b) Henry Stearn, Herbert Stearn, Tom Badcock, Tim Norman William Easy (c) Bob Dixon, Will Kean; Demolished by a crashing Jet 1946
2 (not shown)	Built c1934 (a) William & Annie Easy (c) David & Margaret Bull Robin Chapman
3a Manor	(a) Charles Tebbutt (b) Tom & Violet Page (c) John & Lillian Mynott Demolished c1960 for Agricultural College
3b Farm	(a) Victor Woolf, Edith Woolf; Demolished c1960 for Agricultural College (b) Robert & Martha Wayman, Walter & Ann Maskell
4a	(a) William Butler (b) William/George Butler (c) George & Amy Johnson Tom & Rose Easy
4b	(a) Tim Norman (b) John & Jessie Halls, George Smith (c) Fred Smith Dorothy Smith
5	(a) Charles Day (b) Charles Day (c) Charles = Wag & Lillian Day David & Margaret Taylor, Roger & Cora Kent
6 Braemar	(a) Mr. Unwin (b) Robert Barker, Bert Lander, Edward Diver Montague Easy (c) Mont & Alice Easy, Graham Easy
7a Eastleigh	Built c1935 (b) Robert & Edith Missing (c) Robert & Edith Missing Edward & Enid Pollentine, Barry, Went
7b Restormel	(b) John Halls (c) John & Jessie Halls (Florence Richmond) Robert & Daphne Norman
8a	(a) James Coulson (b) John & Jessie Halls, Arthur Coulson, Jacob Coulson; Demolished c 1940
8b	(a) Thomas Reed (b) Henry & Fanny Smith, Fred Smith, George Flack Demolished c 1940

## HIGH STREET

9a	(b) John Shipp (c) Alfred & Violet Edwards Demolished c 1955
9b The Slupe	(a) Will Daynes (b) Charles Daynes, William Tyrell (c) Roy & Katherine Bumpstead Demolished c 1955
9c or	(b) William & Louisa Carlton, Harry & Florence Matthews (c) David & Agnes Duncan; Demolished in 1955
9d	(b) Albert & Ethel Willett (c) Albert & Ethel Willett Leslie & Lillian Ding Demolished in 1955
10a Willard Cottages	(a) Thomas Nichols (b) Thomas Nichols, Leslie Edwards (c) Leslie & Christina Edwards, Kate Edwards
10b	(a) James & Eliza Carlton (b) Eliza Carlton, William & Louisa Carlton (c) James & Amy Carlton, Kate Carlton, Brian & Rose Lee
11 Hungry Hall	(a) John Wilson (b) John Wilson, Arthur & Minnie Conder (c) Arthur Conder, Cyril & Bessie Langley, Donald & Ann Beard; Demolished 1957
12 Fern Cottage	(a) George Wilson (b) George Wilson, Reginald Wilson (c) Reg. Wilson (Dot Ingham) Ruth Wilson
13a	(a) Ernest Carlton (b) Ernest Carlton, Fred & Edith Almond Demolished 1960s
13b	(a) H. Cullum (b) H. Cullum, Fred & Edith Almond (d) Demolished in 1960s
14 Waggon & Horses	(a) George & Mattha Oliver (b) Martha Oliver, William Coulson, Bert Lander, Harry Meech (c) Harry & Gladys Meech, Ray & Maureen Viney

15 Willow Farm (a) Frances Gunnell (b) Charles Butler, William & Matilda Hall,  
(c) William & Matilda Hall (John Callandine)

16 Willow House (a) Frances Gunnell (b) Frances Gunnell, Roland Woodman  
(c) Marcus Woodman Demolished c 1955

### THE HALL AREA

17 North Lodge (a) Charles Brown (b) Charles Brown (c) Adam Archibald  
Robert & Hester Rumble, John Grant, Richard Fulcher, Willett

18 West Lodge Palmer (b) Herbert Diver, Percy & Hannah Palmer (c) Percy  
Charles & Mary Carter David Coulson

19 Milton Hall (a) James Valentine Prior (b) James Valentine Prior, Lydia Brain, John  
& D. Bulteal

20 The Rectory (a) Rev. Chapman (b) Rev George Evans, Alfred Johnson, George Osbourne  
(c) Jack & Gwen Plumley, Herbert & Edith Franklin, Rev Fred Kilner

21 a (b) Tony Salmon

21 b Edgeways (b) George & Sarah Branch (c) Samuel & Ann Beacon  
or David & Iris Reynold

21 c Endways (b) Thomas Norman

21 d (b) Elizabeth Branch (c) George & Cissy Day

### CHURCH LANE

22 Lilac Cottage (b) Alfred Neech, Ernest Westrop, Daisy Freemantle, Mr. Steel  
Frances Chappell (c) Frances & Jane Chappell, Ronald Ward, John Wilson

23 a (a) John Starling & Elizabeth

23 b (b) Charles Howard Demolished  
c 1930

23 c (a) Fred Starling & Sarah

24 a The (b) Sarah Asplin, (c) Edith Bullman, Albert & Beryl Halls

24 b Poplars (a) Albert Humpfreys (b) Albert Humpfreys (c) Jack & Edna Bradnam  
Raymond Bradnam

25 Jolly Brewers (a) Thomas Essex (b) Thomas Essex, Percy Essex, Arthur Taylor  
(c) James & Phyllis Orchin, Morgan, Woodgate, Sanderson, Costard

### FEN ROAD

26 a (a) James Hatton (b) James Hatton, Mr. Roberts, John Waring  
(c) John & Alice Waring

26 b

27 b Queen (a) Thomas Howard (b) William Bird, G. Butler, George Pickering,  
Ann Tom & Violet Page (c) Tom & Violet Page (Lavinia Newton)

27 a Lodge (a) Howard (b) Peter Biggs, Alfred Neech (c) Sarah & Elizabeth  
Neech Coulson, John Holder



View of Landbeach Road from  
the War memorial

The numbers for the houses in the Residents List are those that appear in the drawings. The house names are mainly those used in the 1950's; some of these have been changed recently. The householders' names are hopefully in Chronological order:-

(a) before 1900 (b) 1901 - 1939 (c) 1940 to modern.

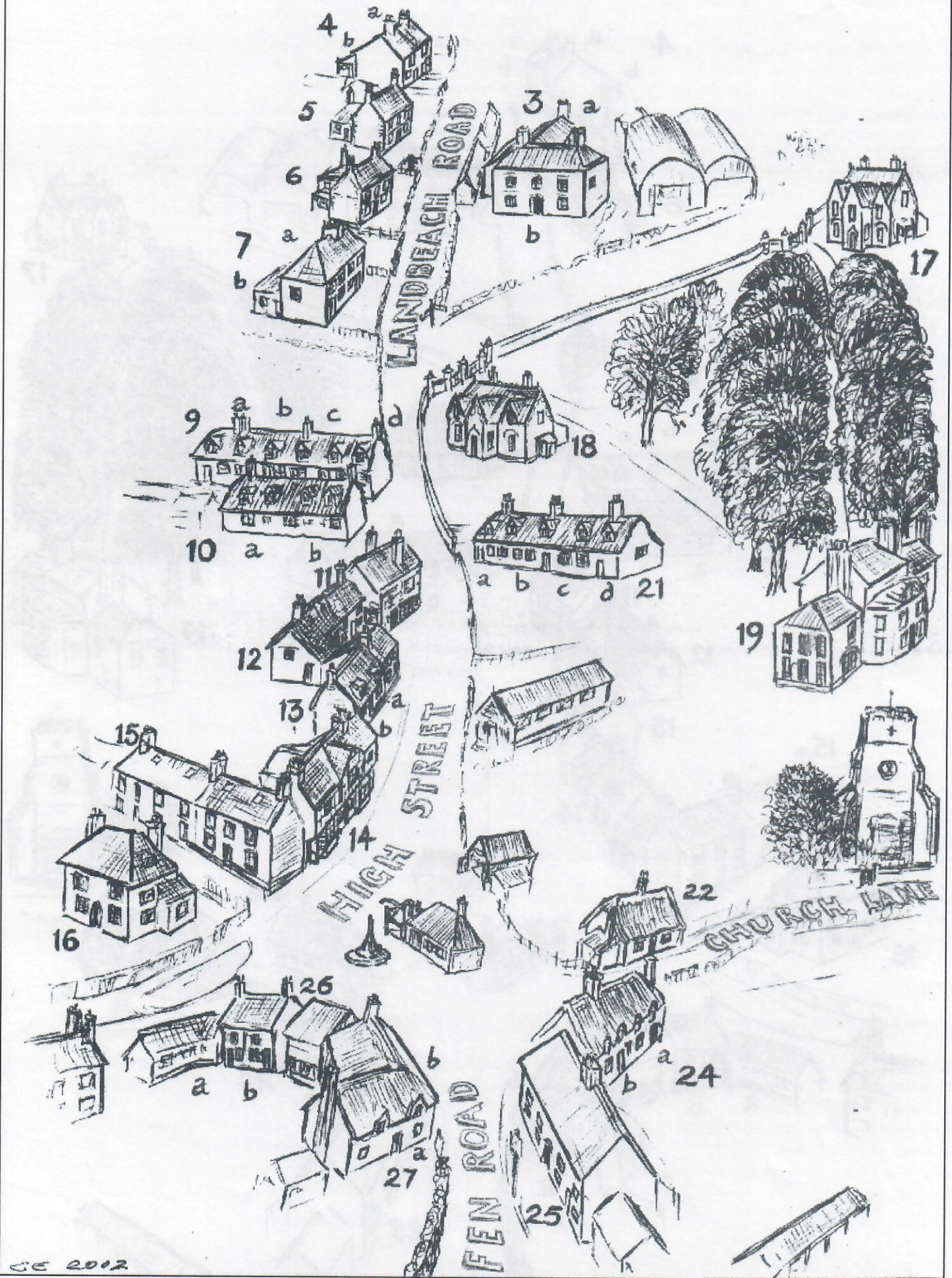
Here you the reader can help. If there is anything you find erroneous or omitted from the list please forward your information to:

Graham Easy, 11 Landbeach Road, Milton CB4 6DA

c 1900



c. 1940





## Milton Community Centre Tea Dance



In April the Community Centre held a tea dance with live entertainment by Leigh Murfet.

Leigh played and sang songs: waltzes, quicksteps, barndances,

sequence and line dancing, whatever anyone wanted he played, and everyone had a wonderful time. It was nice to see the hall fill up with over 60 people dancing in the afternoon. Lots of people just came to listen and have a cup of tea and as it was so successful I hope I can arrange another one in October.

My thanks go to several people who helped on the day as I was certainly *not* expecting anywhere near the amount of people that attended.

If you would like to be contacted when the next one is arranged please ring and leave your name and telephone number at the Community Centre (01223 862763)

*Julie Gray*

## Giant Wasp Nest



Mrs Roberts with the giant wasps nest removed from her loft. The nest is both amazing and beautiful. It is very light and the surface looks like paper shells. The honey comb effect can be clearly seen from the back of the nest.

## Milton 2000 - MINUS A YEAR OR TWO - By Harry Missing - Continued from February issue

Times were not particularly easy in those days between the wars, with many unemployed, but on the Farm we were fortunate in having a good employer who allowed us to consume all the eggs we wanted and always gave us a Cockerel at Christmas. Father always found time to keep a good vegetable garden in which Apple and Plum trees yielded us their fruit. In the hedgerows, the blackberries I mentioned earlier, together with Loganberries were in abundance. In the fields, tomatoes, a by-product of the manure brought in from across the main road, and beetroot, rogue seed in the Mangel-wurzels. Two of the fields were put down to grass after Uncle Fred had died and the flock of sheep sold. This was ideal for me and the Lucas boys as our own private Football, Cricket, French Cricket, Rounders and Clock Golf pitches. The field, to the right of the farm road was also the source of an abundant supply of mushrooms. Besides consuming some ourselves, I used to gather baskets of them and take to Aunt Emma who, by now, after the loss of Uncle Fred, together with a Grandson, had set up, with Pony and trolley, a Greengrocery Round. She would give me the princely sum of 6d (2½p) a basket.

The meadow on the left-hand side of the farm road was bounded on its left (the Cambridge side) by a large drainage dyke, having a width across its top of ten to twelve feet. This drain, which we always referred to as 'The Water Course' extended North-westerly almost to the Mere-way, or Mare-way as we used to call it, where it linked with other smaller drains. Halfway along its course, it turned to pass under the Histon Railway Line and King's Hedges Road, extending its catchment area to that now known as the North Arbury Estate. South-eastward from the farm, the drain ran under the main A10 road and is still visible running down to the river alongside and parallel to the Cowley Road. The water course was our largest source of free food, the banks being honeycombed with rabbit warrens.

Mother always made sure we had a joint of meat every Sunday, sliced cold again for Monday and finally minced for Shepherds Pie on Tuesday. Tuesday night Father would take the Gun and return with Rabbit or Hare for meals for the rest of the week. It was not always necessary to use a gun to catch a Hare - they're a bit stupid you know - and Father told me of one occasion before he left home when his Mother, immaculate as usual in her white starched pinafore, was gleaning in a field when a hare was 'put up' by men working in an adjacent field. The Hare ran down a furrow towards Granny, a good 5ft in stature, who stood one foot either side of the furrow holding out her piny. The Hare blindly ran into her piny knocking Granny on her back. As she fell she wrapped the pinafore around the Hare and hung on until help arrived. If you've ever had a kick from a Hare, you will know what she was up against. The second occasion related this time by my brother was when father and he went ploughing together. First thing of a morning, they would plough across the field keeping an eye open for a sitting Hare. If they spotted one they'd note in which direction the Hare was looking knowing full well that the Hare would continue to watch that ploughman. With this established they would return across the field to a point level with the Hare. Taking a 'spud' (a long handle tool, very much like a Dutch Hoe, used for cleaning the breasts of the plough), this would be stood upright in the ground with Father's cap on the top of it. The Hare's attention would continue to be focused on the cap whilst Father walked around the animal and picked it up.

Using enlarged Rabbit holes, the water course was also the permanent home for a large family of Foxes. Although the farm with its poultry was only 2-300 yards away, they would not take any of them, preferring to 'play away' and conceal their whereabouts. One could often see a Fox returning with a hen or duck over its back before it actually came into view by the small flock of birds that kept diving down on the predator and marked its progress homewards. Father used to shoot the Foxes and then immediately bring them home and skin them before they got cold. Their tail (Brush) being the most tedious and lengthy process of the task, being so important not to damage, was then sent off to London where it was fashioned into a Stole. If you saw anyone sporting such a Fox Stole in Cambridgeshire before the Second World War, she was probably an Auntie or close relative of mine as they all got one.

*To be continued*

**M.J. BLACK**

*Carpentry & Joinery*

Fitted Kitchen Specialists  
complete service from  
Planning to Installation

Tel. (01223) 277772

Mobile 07831 626398

**R B**

*Electrical*

Your Milton  
Domestic and  
Industrial Specialists

Tel. 365200

**PHYSIOTHERAPY  
REFLEXOLOGY**

LIZ CRADOCK  
Grad.Dip.Phys,MCSP,SRP,IIHHT

Chartered Physiotherapist  
& Qualified Reflexologist

Tel. 01223 862501  
Mobile 07714 052389

At 'Harmony', 6 High Street, Milton

## Landbeach and Milton Baptist Church

### Sunday Services

10.30 am Family Service  
6.30 pm Evening worship

### Midweek Home group

Landbeach every Wednesday Morning 10.00am

### Tuesday Children's Club

last Tuesday of each month at 6.30pm  
All are welcome to our small but friendly fellowship.

Further details may be obtained from Malcolm and Jenny Franklin,  
Tel 01223 513567

Is your child 3 years old before September 1<sup>st</sup> 2003?  
Are you looking for a nursery place for your child?

**King's Hedges Nursery Class** has spaces available for Sept. 2003. King's Hedges school has been presented with a "School Achievement Award" for 2001 and 2002.

Contact the school on **Cambridge 518330** to arrange a visit and to obtain an application form

## Silver Service Taxi

Tel. Ian May C. 502609 or 07989197816

### Chimney Sweep

J Wright Tel. 01223 570057

### PAINTER & DECORATOR

DAVID PECK Tel.: 01954 211428

### Building Consultant

Paul S. Seaman Tel. 01223 563530

### CAM LAWNMOWERS

For repairs Tel. (01954) 231569

*Brian Davey, Recorder Lessons*  
all standards Tel. 01223 440444

NEW LOOK NAILS Nail Extensions  
Telephone Paula on Milton 511238

Borderline - Gardens designed on  
Computer. Tel. 01223 510100

### SING ALONG DUO

FOR HIRE 01223 276502

The above are waiting for advertising space.

50<sup>th</sup> Cambridge (Milton) Scout Group

## Marquee Hire

Telephone Bob on (01223) 514332

E-mail:

[scoutmarquee@miltonvillage.org.uk](mailto:scoutmarquee@miltonvillage.org.uk)

Web site:

<http://www.miltonvillage.org.uk/scouts/marquee/>

## All Saints Church, Milton

*A welcoming, friendly group of people.*

*We have a variety of services with something for everyone:*

**8.00am** Traditional Holy Communion (said)  
**10.30am** Family service with Creche and Sunday School  
**5.30pm** Evening Prayer (said)  
**7.00pm** AS@7 contemporary worship with band (see below)

### Picnic Picnic Picnic Picnic Picnic Picnic

*You are invited to a picnic on the community centre field.*

Sunday June 29th - 4.00pm to 6.00pm

*Free ice-creams, entertainment, games.*

*Please bring your tea and something comfortable to sit on.*

*Meet your friends, relax and chat.*

### Village Fair

Also see us at the village fair on July 13th

### AS@7 All Saints at 7pm AS@7

What do you think a church service is like?

*Well this one probably isn't.*

What is it? A contemporary style service, followed by coffee bar, open to all ages, but particularly relevant to 15-35s.

When is it? Every Sunday at 7pm.

Where is it? All Saints' Church

When can I check it out?

Any Sunday, but these particular dates might be a good starting point:

29th June, 20th July

Where can I find out more?

[www.allsaintsmilton.org.uk](http://www.allsaintsmilton.org.uk)

## Computer Users

Let's get Waterbeach, Milton and BT Broadband connected!

Many homes in our village are unable to connect to cable services and no-one in the BT Waterbeach telephone catchment area, which also includes Landbeach and Milton, are able to receive BT's Broadband ASDL service either.

BT Broadband offers many benefits to home computer and business users. But not in the Waterbeach area, only where it is available!

BT has 67% of the UK covered by Broadband ASDL and hopes to have 90% covered by 2004. The exchanges are being upgraded "by demand" order. Highest demand area gets connected first!

BT's "BT Broadband" website says that if 300 people on the BT Waterbeach exchange register an interest they will connect us! So far 169 people have registered (May 6th), so we are well over half way there.

To help the village and yourself get connected and get nearer the 300 total registered, just log into [www.bt.com/btbroadband/register/ns\\_register\\_intro.jsp](http://www.bt.com/btbroadband/register/ns_register_intro.jsp) and fill in your box details at the bottom of the page. Nothing could be easier!

*David Creek*

## MILTON PARISH COUNCIL 2002-03

Where did your money go?

	2003	2002
Administration	9933	9996
Grass/maintenance & highways	22029	11858
Capital Schemes e.g. skate park*	11803	1430
Milton Community Centre	37115	38924
Millennium Book*	0	9993
Play areas & youth	9281	6477
Community Care (elderly/disabled)	8477	7196
Office Equipment	1232	664
Professional/legal fees	1638	2038
<b>TOTAL</b>	<b>101508</b>	<b>88576</b>

\* The expenditure for the skate park was offset by grants and the Millennium Book was paid for with grants and donations

Please note that these figures are provisional.

## Statement of Accounts

For the year ended 31 March 2003

	31-Mar-03	31-Mar-02
Balances B/F	175,498	171,706
Annual Precept	69,000	67,000
Total other receipts	22,171	25,339
Staff costs	16,980	16,591
Loan interest/	15,115	17,514
capital repayments		
Total other payments	69,413	54,442
Balances carried forward	165,161	175,498
Total cash & investments	173,986	180,364
Total borrowings	45,534	57,860

## Bargains Galore at Sofa!

Would you like to get your hands on some low cost furniture? Do you have some furniture or electrical items you no longer need? SOFA may be able to help!

Cambridge SOFA is a not for profit making charity which collects unwanted furniture, electrical and household items in order to sell at affordable prices to those on low incomes and benefits.

Call 01223 576535 for further information.

## BIA CLEANING SERVICES

Cheap  
Domestic & Commercial  
General Cleaning

For recommendations  
please call

Call Bobby on : 07717315992

: 07884205224

(Local Resident)

16 Lea Court, Coles Road, Milton, Cambs CB4 6BW



## Julia Adams MSSCh MBChA

Fully Qualified Surgical Chiropodist

## Visiting Chiropody Practice

Please telephone for an appointment or further information

Telephone 01223 441733

Mobile 07890 826 172

## Shapers

Toning : Tanning : Beauty Salon  
286 The Rowans : Milton : Cambs

- ✓ Beauty & Holistic Treatments
- ✓ Toning Systems
- ✓ Tanning Systems
- ✓ Dermalogica Skin Care
- ✓ Schwarzkopf Hair Care

Open 9am - 9pm Mon - Fri & 8.30am - 4.30pm Sat

Tel. 01223 440888 [www.shapers.co.uk](http://www.shapers.co.uk)

# PUZZLE CORNER

Many readers solved the puzzle in the Spring issue of the Village View. All the entries went into the hat and the first two drawn out were sent in by Mr Neville Ray of David Bull Way and Mr F C Hambly of Barnabas Court. Congratulations to both prize winners.

The solution to the word puzzle was:

- |               |   |
|---------------|---|
| 1. Skyjack    | 5. Headquarters   |
| 2. Buzzsaw    | 6. Meltdown (there were other possibilities for this one) |
| 3. Grapevine  | 7. Signpost   |
| 4. Rendezvous | 8. Foxglove.  |

The puzzle this month consists of some Trivia questions. You should be able to find the answers with a little bit of research!

- Which ancient city was the home of the Minotaur in Greek mythology?
- What was the former name of the African country Burkino Faso?
- Its Latin name is Troglodytes Troglodytes. What is its more common name?
- Which Roman ruler made his horse a Consul?
- What is the worlds widest river?
- Which musical show featured the song "There's no business like show business"?
- Which countrys name means "Land of Silver"?
- In what form is low density polyethylene (LDPE) sold in the local supermarket?
- What is the second christian name of Queen Elizabeth II of England?
- What is the collective noun for owls?

As usual there will be prizes for the first two correct entries drawn out of the hat and this month the prizes have been generously donated by R B Electrical.

Send in your entries to arrive by 5 July to Michael Spooner 43a Old School Lane MILTON Cambridge CB4 6BS

## 5 GOSPEL and 5 PORKIES

In a Previous Career !!!!  
ANSWERS to the last quiz

- John Prescott was a Ships Steward. - true
- Whoopi Goldberg was a Mortuary Beautician. - true
- Burt Lancaster was a Circus Acrobat. - true
- Clint Eastwood was a Swimming Instructor. - true
- Greg Dyke (B.B.C.) was a Wisbech Winkle Seller. - true
- Anthony Hopkins was a Coal Miner. - false
- Bruce Willis was a Ladies Hair Stylist. - false
- Julian Clarey was an Army Cadet. - false
- Bernard Manning was in the Salvation Army. - false
- Jo Brand was a Quality Controller at Cadburys Chocolate. - false

**'Crazy for You'**  
Mumford Theatre,  
Cambridge June  
10th-14th

We asked, 'In which American city was the recent film musical starring Richard Gere based?'

Answer: Chicago  
Wendy Stanley is the winner of the two tickets to the opening night.

## Scrabble

One way of keeping your brain active is to play scrabble so they say. Fifteen of us were doing just that at the last session. The trouble with an odd number is that a player either has to play two games at once or a person plays on their own. There is a break after one game when there are a few nibbles and a cuppa, and a raffle with three small raffle prizes, also the player with the smallest score has a consolation prize, which has no reflection on their ability to play. If you have a scrabble board and tiles could you bring it please.

*Rainy Egorina Damsel*

## Milton Netball Club

Milton will be starting to play in the Summer League on Thursday 29 May for a period of twelve weeks. This is an excellent opportunity to join a friendly village club whether you are a beginner or an experience netballer.

There is no club night at the moment but from September onwards we play at the Community Centre outdoor courts on a Tuesday at 7.30 p.m.

If you are interested in playing please ring Charlotte Collen on 01223 503741.

Do you need?

**Driving Lessons?**  
**or**  
**Window Cleaners?**

Ring Howard  
Howards Way  
Tel. 01223 862501 or 0589 218045

**KATHY PLATT**  
Dip.(Adl) Counselling

**QUALIFIED COUNSELLOR**  
dealing with  
depression, stress, bereavement,  
personal and relationship problems.

For more information about how counselling could help you or to make an appointment, please contact me on:-  
**01223 861510**  
MILTON

## Milton Primary School

Year 6 poems

### WHAT IS..... RED?

Red is a Liverpool shirt  
they all look really great,  
It is blood  
pouring out of the arm,  
It is fire flickering  
about to burn a house down,  
It is an emergency service  
which saves a lot of lives.  
It is a stop sign  
which prevents crashes.

*By Alex Hunn*

### WHAT IS ..... RED?

Red is the shape of a rose,  
blooming in the spring,  
It is the colour of danger,  
blood, love and hate.  
It is the glowing tinge of the sun  
shining at midday.  
It is the flame of fire,  
blazing bright and clear  
It is the hue of autumn leaves  
flying round in a breeze.

*By Sushruta Chandraker*

### WHAT IS..... RED?

Red is blood  
rushing through our bodies.  
It is comic relief  
raising money for starving people.  
It is the England flag  
swaying in the breeze  
It is the devil  
making burning fire  
It is a Ferrari  
smashing the chequered flag.

*By Nicholas Manning*

## Whist Drives

The number of tables vary from time to time due to holidays and bowls matches but it is always worth the effort knowing that people always seem to enjoy the evening. Once again we are collecting items for the tombolla at the village Fayre which will enable us to have a bumper drive at Christmas. Bottles, tins, toiletries are all very acceptable. All we want is a nice fine day; it should be alright being two days before St. Swithins! *Mary Daniels*

**C H LUMB**  
(BUILDERS)  
DRAINAGE - GUTTERING  
UPVC FACIAS & SOFFITS  
PATIOS & FENCING  
ALTERATIONS  
01233 354402  
Mobile 07762026290

# Milton Parish Council

Milton Parish Council was due to hold elections this year but there were only fifteen candidates for fifteen places so all were appointed to the council and no election was needed.



Liz Baker



Paul Oldham  
(Chairman)



Hazel Smith  
(Vice-Chairman)



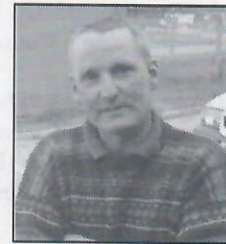
Ian May



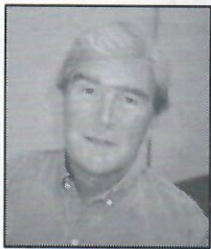
Barry Jefferson



Jim Daniels  
Clerk



Rob Chapman



Mark Ellwood



Lynne Twinn



Christopher Lock



Bob Waters



Jane Coston  
(Also - County Councillor)



Ian Cowley



Rob Farrington



Roger Day



Richard Summerfield  
(Also - District Councillor)

## BENET GARAGE MILTON

Opening times:- Monday to Friday, 8.30am to 5.30pm, Saturday 8.30am to 12.30pm

**BOSCH  
SERVICE  
AGENT**

**TEL. 420380**

**TYRESAVE  
CENTRE**

**M.O.T. TESTS WHILE YOU WAIT**

BY APPOINTMENT

**\*Ask about our unleaded conversion package\***

**Lubricare 1 Service**  
Change oil & filter  
Check fluid levels tyres and lights  
**£15 labour**

**Full Service**  
& Engine Tune  
**£60 labour**

**Lubricare 2 Service**  
As lube 1 plus fit new plugs and  
check all brakes  
**£35 labour**

Bottled Gas Stockist

All prices plus parts and VAT

All Major Cards Accepted

Printed by Cambridge Evening News, Winship Road, Milton, Cambridge, CB4 6PP  
Produced and delivered by volunteers. Designed and published by Jane Coston, 67 Coles Road Milton Tel. 861655  
Editors - Jane Coston, Michael Spooner, Kate Marshall, Paul Capitain.