

Milton

Established 1991

Village View

★
★ **Happy Christmas** ★
★

Village News Sheet

Delivered Free
Circulation 1,800

Whats On
Competition

Page 3
Page 7

Issue No. 70 - December 2005



New parish office being built on Coles Road Rec. behind the bowls pavilion

Milton Man runs in 'Chariots of Fire' Relay Race

Paul Isaacson pictured here on the left ran in the first leg of the relay (1.7 miles) for a Barclays Team. This part of the course was from Queens Green over Silver Street bridge and along Kings Parade, through Petty Cury, Sidney Street, Green Street, through Clare College and along the backs. The weather smiled on the entrants and many £'s were raised for the Milton Childrens Hospice.



Parish Office takes shape

The parish council has for some time been considering how it should provide office space for the clerk.

Now at last the clerk, Jim Daniels, will be able to move everything out of his front room into a new purpose built office. The new office incorporates a store where information belonging to the council can be kept. At the moment it is in various locations due to lack of space.

One hundred years ago all the paperwork for a year would have probably fitted into a brief case, now a years worth of paperwork would probably fill a wheelie bin and computers, photocopiers, overhead projectors, and phones replaced simple pens and paper.

The new office is expected to be finished early in the new year.

Gathering at the War Memorial



At 11am on the 11th November the village observed two minutes silence at the war memorial in Coles Road. Harry Captain recited the words

*They shall grow not old, as we that are left grow old:
Age shall not weary them, nor the years condemn.
At the going down of the sun and in the morning
We will remember them.*

The Chairman of the Parish Council laid a wreath on behalf of the village. Children from Milton Primary School also attended.

Milton Windows

(01223) 440376

FAX (01223) 860284 The Brambles, Green End, Landbeach, Cambridge, CB4 8ED

www.miltonwindows.co.uk

Email: - info@miltonwindows.co.uk



FENSA

Next Issue

due out beginning
of February

Items for inclusion in
the **New Year Issue**
should be with one of
the Editors by the
12th January

Send Us Your Stories

to Jane Coston, 67 Coles Road
Tel. 01223 861655 or by e-mail to:
vv@miltonvillage.org.uk
We are also on the web at:
<http://www.miltonvillage.org.uk/>

Local Concerns or Enquiries Parish Contacts

Clerk to Parish Council

Jim Daniels
84 Coles Road. Tel. 861447
clerk@miltonvillage.org.uk

Chairman of the Parish Council

Jane Coston
67 Coles Road. Tel. 563539
chair@miltonvillage.org.uk

Vice Chair of the Parish Council

Paul Oldham
4 Church Lane. Tel. 861045
paul@the-hug.org.uk

District Councillors

Hazel Smith, 7 Hall End. Tel. 860752
hazel.smith@miltonvillage.org.uk

Richard Summerfield
1 Willow Crescent. Tel. 860715
richard@tsummerfield.freeserve.co.uk

County Councillor

Michael Williamson, The Willows, Long
Drove, Waterbeach, Cambs. Tel. 860899
michael.williamson@cambridgeshire.gov.uk

Notice

Milton Village View is unable to check or verify the warranties, authenticity of or representations made by their advertisers and must therefore exclude liability howsoever arising from any advertisements in this newspaper. Nor do any statements necessarily accord with the opinions or beliefs of the Editors, Milton Parish Council or Milton Village View.

PAINTING DECORATING GLAZING

Mobile
07860 453533
Phone/Fax:
01223 700800
(local resident)



Bettys Hair Design

Professional Hairstyling
For Men and Women
Tel: 01223 420526

49 Cambridge Road, Milton, Cambridge CB4 6AW

HARMONY

Hair & Beauty Salon
6 High Street, Milton, Cambs.
Tel. (01223) 863636

Hair, Beauty, Reflexology, Aromatherapy, Physiotherapy

Future of Milton Country Park

With South Cambs District Council having to find budget cuts of more than 20% as a result of being capped Milton Country Park has been rated amongst the least important services provided by the Council. The Friends of Milton Country Park do not believe this reflects the views of the many users of the Park.

One option being considered is the possibility of finding a third party to take responsibility for running the Park but the Council's own accounts, show that the Park costs far more to run than any potential income from the Park. Any outside organisation would need to be heavily subsidised and would need experience of all aspects of running the Park.

Since the Park opened the Friends of Milton Country Park have been involved with organising events, raising funds and promoting the Park and its wildlife. The Friends have the following concerns for the future of the Park:

- The Park should continue to provide its existing roles; as a nature reserve, as a leisure and recreation facility and as an educational resource for local schools.
- The Park needs to be run by experienced staff, with both the skills to ensure visitors can enjoy the park and to maintain the varied and diverse Park wildlife.

The Friends would like as many park-users as possible to write to Councillor Deborah Roberts, South Cambridgeshire District Council, Cambourne Business Park, Cambourne, Cambridge CB3 6EA, explaining why you think the Park is important, or to reinforce the above points. This could be just a simple postcard, saying what you enjoy most about the Park, this will help show how important the Park is.

Stephen Bennett



Greetings From Greece

The Village View is read in Greece!
In a letter from Mrs Stella Watson she writes:

**'To all Milton People,
I wish you a Happy Christmas
and a prosperous 2006.'**

Mrs Hilda Day dies

Mrs Day, who celebrated her 101st birthday this year died on November 1st. She had lived in the village since 1935 and will be sadly missed by her family and friends.

The family would also like to give a special thanks to the Mobile Warden, Tracy in appreciation of all her help over the years.

Roger & Michael Day

A Christmas message from the Rector

Dear Friends,

It's now coming up to my second Christmas in Milton, and preparations are well under way at All Saints Church to celebrate this very special season. Last year, I was very impressed with the range and quality of services and events on offer, and you will find this year's details on page 6.

The Christmas story – a special baby born in a stable, a star, shepherds, wise men and angels – is a very familiar one; so familiar that I think many of us forget what a world-changing thing happened that night 20 centuries ago. God himself, in the person of Jesus, came to live among the people he had created, the beginning of a 33-year mission to defeat sin and death, culminating in Jesus' execution on a cross, and his victorious resurrection after three days dead in a tomb. It has been described as the greatest story ever told. Except... it's not just a story...

I do hope many of you will come to your parish church over the Christmas period – there is something for everyone – you will be made very welcome, and you will have the opportunity to find out more about this most wonderful of stories.

I wish you all a very Happy Christmas, and every blessing for the New Year.

Rev. David Chamberlin, Rector

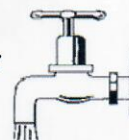
M J POTTS HEATING & PLUMBING SERVICES

17 Headington Drive, Cherry Hinton,
Cambridge, CB1 9HE

Tel: 01223 242544

All Installations/Repairs undertaken

Approved CORGI Gas
& TOTAL OIL Installer
Work Guaranteed
FREE ESTIMATES

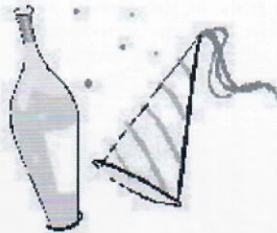


Milton Colts Football Club

New Years Eve Family Disco

Saturday 31st December
8.00 pm to 1.00 am

Milton Community Centre
Disco, Bar, Raffle and Buffet
Adults - £12.00 Children - £6.00



Admission by ticket only
Telephone Andy Gray: 01223 524744

Get in the mood for Christmas Choir 2000 Advent Concert Handel Messiah Part I (the Christmas Story)

Fri 9th and Sat 10th December 2005 8pm
Histon Baptist Church

Programmes £9 (concs £7), under 16's free.
On the door or from Jane's Frames, Histon or Corn Exchange Box Office
(01223 357851).

Seasonal refreshments will be available and
there will be a retiring collection in aid of MAGPAS.

Milton Country Park

Events

January

**Sunday 29th, Big Garden Birdwatch
Watch Wildlife Explorers Family Group**

An activity for children and families.

Come along and find out more and
take part in the Big Garden Birdwatch
event at the park.

Meet at the Visitor Centre, 2.00 to 3.30 pm

February

**Sunday 12th, Watch Wildlife Explorers
Family Group. Nest Box Making**

Families can make a bird box to take
home. All materials and tools supplied.
Turn up at the Visitor Centre on the day,
no booking required.

10.00 am to 4.00 pm. £5.00 a box.

April

Sunday 16th, Easter Treasure Hunt

Yes its back again, find the answers and
claim a reward. Meet at the Visitor Centre
at 2.00 pm. There will be a charge of £1.50
for each person seeking a reward.

**Sunday 30th, Evening Walk. Watch
Wildlife Explorers Family Group**

An evening walk in the park listening to the
birds. 7.00 pm start for 1 ½ hours.

For more information
contact the Country Park



Own a camera?

We are a newly formed group of people with a common
interest in photography are trying to get a photographic
club together in Milton. We meet at 7:45pm on the
second Wednesday of each month at the church-hall.

At each meeting we aim to cover a range of topics,
including film & digital, photographs and video,
techniques and styles. Rather than formal meetings and
competitions, we aim to create an informal setting for people to share
experience and learn new techniques.

See www.miltonphotographicclub.org.uk for more details.

Stephen Bennett

National Blood Service

Sessions at Milton Community Centre

13:00 to 15:30 and 16:30 to 19:00

Thursday, March 2, 2006

Friday, March 31, 2006

Monday, June 26, 2006

Friday, July 28, 2006

Do something amazing today - Give Blood.

Please call 0845 7 711 711.

You can visit us at www.blood.co.uk

I.G.M

CONSTRUCTION

I. G. MARNOCH

Montrose House, Ely Road, Waterbeach, Cambridge
Phone 01223 441717 - 07050 251433

EXTENSIONS
GARAGE CONVERSIONS
LOFT CONVERSIONS
RENOVATIONS
NEW HOUSES

FROM PLANNING TO COMPLETION



**MILTON
GAS
SERVICES**

Eddie Kikas

29 Landbeach Road, Milton

Tel./Fax: (01223) 861810

Mobile: 07831 228181

Servicing, Installation & Repairs to all
Gas Boilers, Fires, Cookers,
Central Heating Systems etc.



Corgi Registration
Number 161938

GODDEN AUTO SERVICES

**All makes - service and repairs
CITROEN AND TOYOTA SPECIALIST**

SERVICING, CAMBELTS, REPIPING,
CLUTCHES, NEW CHASSIS, BRAKE
OVERHAUL, WELDING, ELECTRICAL
FAULTS, ABS, INJECTION SYSTEMS ETC.
CALL NOW FOR FRIENDLY ADVICE OR QUOTE

UNIT 13 CAVE IND ESTATE
FEN ROAD, CHESTERTON, CAMBRIDGE

TEL: 01223 425125

MOBILE: 07831 817981

MILTON RESIDENT

MILTON 2000 – MINUS A YEAR OR TWO By Harry Missing

(Continued from issue 69)

Some contagious illnesses were more prevalent during the 1920's and 30's than today. Isolation hospitals were much in demand and the hospital at Papworth was established for patients with Tuberculosis. Even so, many patients with tuberculosis were to be seen being treated in their own homes, perhaps in an adapted Garden Shed or isolated bedroom with open windows. I notice that the Council has recently introduced traffic calming measures in the High Street. This is not a new phenomenon and, as far as I can remember, last occurred for short periods in 1925 and 1927. It took the form of a wagon load of straw spread over the road outside the house which is now the Spar Shop. At that time, it was the home of a Mr Coulson, mentioned earlier as the owner of one of the two Steam Threshing Machines in the village. The family consisted of four boys and three girls, all born around the beginning of the last Century. Three of the young men died from Tuberculosis, two in the period just mentioned and the third somewhat later, about 1934. The straw was used not only to slow down vehicles, it also deafened the noise from solid rubber tyres, metal clad wheels and horses shoes. It only remained for a short period, during the last few days of a life. This practice was not peculiar to Milton, I remember seeing it at Cottenham at around this time. What it does tell us is that families took more responsibility for their terminally ill then, than is necessary today. Incidentally, all three brothers were buried on the right, in the small Chapel Yard and share a single headstone but with separate graves. The Starling family in Fen Road will be reminded of their own loss from this scourge.

As the last few years of peace between the wars were slipping away, our attention as teenagers was drawn increasingly away from village activities, to that of the amenities available in Cambridge. How I now envy your Tennis Courts, your Bowling Green, your Floodlit All Weather Surfaces for Football and your Recreation Ground with its flat surface for Cricket and Football. We didn't appreciate it at the time, but gradually we were becoming influenced by pictures in newspapers of German Military build-up, the re-occupying of the Sudetenland, the issue of Gas Masks and the popular song of the day, "When the Poppies Bloom Again", with its subtle and poignant links to World War 1, to join the Territorial Army Units.

To be continued

Malta revisited

Once again Coles Road resident Harry Capitain has kept up his annual tradition of visiting Malta, where he spent three years during the Second World War. In April, along with companion Doug Teeboon, he visited the president of Malta, had lunch with the Australian ambassador and attended several other commemorative functions. Doug also took the opportunity to visit relations on the island.

Since then Harry has attended yet another reunion, this time at the Union Jack Club in London. He is seen here looking over war records with an old shipmate at the Royal Navy's HMS Matchless reunion in September.

Paul Capitain



Harry Capitain (right)

South Africa Revisited

I, like all WWII service personnel, had the opportunity to apply to a fund set up by the National Lottery for a grant to help towards the cost of returning to places anywhere in the world that we had served. Together with six others (all members of an association we have formed called The Queenstown & Hangklip Association) who were trained as Navigators in South Africa I decided to embark on a visit to the southern hemisphere. We commenced our visit in East London where our classroom training had started and then drove to Queenstown, which is nearly 4000 feet above sea level and to the airfield where we did our flying training.

In both places we were met by very welcoming people who are either connected with the RAF Association or in the case of Queenstown by enthusiasts of the flying club that has been formed at our old Air Navigation School. I suppose, Queenstown created the greatest interest as we were given flights in the Flying Club's private aircraft; I had the good fortune to be taken up in a Tiger Moth, which gave me the opportunity to take a number of aerial photos of the area over which I had not flown for over sixty years. One lady who joined us there had been a wireless operator in the SAAF who had flown in the Anson's with us during training.

After our flights we were taken to Queenstown cemetery, and wreaths were laid at a section where twenty-two personnel from our ANS are buried, the majority being trainee navigators.

Later on the same day we were taken on a tour of the local game reserve where we saw rhino, zebras, wildebeest and various members of the 'bok' family before going to the home of one of the pilots for a 'braai' (BBQ)

After returning to East London for a few more days we flew to Port Elizabeth where we were taken to the SAAF Museum and treated to another 'braai'.

My tour ended in Cape Town, where I had an excellent view over the city from my ninth floor hotel room. During my stay I was able to take some photos of the spectacular scenery from the top of Table Mountain, which is reached by cable car with a revolving floor to provide all round views. Previously I had only seen the mountain from a troopship in 1943.

A packed and very enjoyable eighteen days, accompanied by much reminiscence.

Ted Gunn, Fox's Close, Milton

Pete's Quality Meats Christmas Fayre

Traditional Turkeys
Fresh Geese / Ducks
Beef Ribs, Venison
Gammons, Cooked Hams
Turkey Breast Roll
Pork - Leg & Loin Rolled
Large Cockerels
Sausages / Bacon /
Chipalattes / Sausage Meat
Cheese / Olives selection

Telephone Ordering
FREE delivery in Milton
Tel: 01223 352853

1a Arbury Road, Cambridge

Pilates

Milton Community Centre
Monday 9.30 - 10.30am

Milton Community Centre Annexe
Tuesday 7.45 - 8.45pm

PILATES institute

Contact: Liz Ward
(01353) 749611 or (07768) 155278
for further details

Painter & Decorator
Interior & Exterior
High Class Decorating
Free Estimates

R.P. Kent
Tel. 01223
860995



MILTON
WINDOWS

CALL THE COMPANY THAT CARES

Specialists In Replacement

• Windows • Doors
• Conservatories • Facias In
• PVCu • Hardwoods
• Aluminium • Etc.

• 21 YEARS EXPERIENCE IN THE INDUSTRY •

CAMBRIDGE
(01223) 440376

FAX (01223) 860284

The Brambles, Green End, Landbeach, Cambridge, CB4 8ED

• QUALITY COSTS NO MORE •

Then till Now

The First 25 years of All Saints Lunch Club
(Final part - continued from issue 69)

This club has become part of life, Tuesday shopping day, Wednesday preparation day, and Thursday eating day, and Friday — we try to forget about it!! The success of our club must be that we are a dedicated team, and when someone joins us we don't say do this or do that, we just fall into a job after a few weeks, and then stick to it. We all get on well together hopefully and if we get on each other's nerves it doesn't appear to show.

There are so many people to say thank you to — The members for turning up, the team for all being so cheerful, the ladies who provide us with desserts, friends who help when we are short, those who use their transport. In addition Pat Fletcher for all she did before moving away and goodness knows what I, or the club would do without John and Dusty Scruby. I don't know how he fell into this job but I certainly don't know how to thank him; without his help we would never have got the dishwasher installed so quickly. Not forgetting Fred Kilner for having the brainwave for the lunch club, it has certainly stopped me from rusting away.

We had our first 100 year old birthday party last June and now in 2005 a celebration lunch for a quarter of a century of All Saints' lunches. I must finish with a plea, we could do with a bit more male company, why are they so backward in coming forward.

M of the Prime Team

Lunch Club

In the new year we are hoping to continue with weekly lunches again, having acquired a new team, we hope we can carry on in the same happy way as in the past 25 years. It is a worthwhile job and we feel we have achieved something when everybody goes home satisfied.

The time has come for me to hang up my cooking utensils, partly because of age which happens to us all, and stupidly falling over, however I hope to still be of use in a small way and will still be there. It is going to take a long time to get it out of my system.

I would like to wish the new team lots of happiness and laughs which we have always shared.

Mary Daniels

All Saints Lunch Club

Note from editors: Thank you Mary for all your hard work over the years, we are sure you will be missed.

50th Cambridge (Milton) Scout Group

Marquee Hire

Telephone Bob on C. 514332

E-mail: scoutmarquee@miltonvillage.org.uk

Web site: <http://www.miltonvillage.org.uk/scouts/marquee/>

Milton Community Minibus

Available for hire to non-profit making community and voluntary groups.

www.miltonvillage.org.uk/minibus

01223 860160

minibus.bookings@miltonvillage.org.uk

Milton Colts Football Club

(An F.A. Charter Standard Club)

On behalf of everyone involved with Milton Colts we would like to thank everyone who saved their Tesco Sports Vouchers and donated them to our Club. At the time of writing we have some 9,000 vouchers which will be redeemed for much needed additional equipment for our various teams.

People may be interested to know that we now have some twelve Colts teams catering for girls and boys from the ages of eight through to sixteen years. Some 150 children are involved in training sessions and regular matches week in week out and the majority of these live within the village.

We are always wishing to hear from local businesses who may be interested in sponsoring or assisting us in any way.

With the number of teams and therefore matches we are always looking for extra help. In particular at the present time we are urgently looking for people who would be willing to referee games on a regular basis either on a Saturday or a Sunday. The Football Association regularly run training courses with the majority of the fee refunded, once the candidate has refereed 10 games.

Anyone interested in helping in anyway please contact Ian May 01223 521294 or Chris Drummond 01223 863615 we will be pleased to hear from you.

Mereham Developers outline their plans

Stannifer Developments Ltd attended Milton Parish Council meeting on Monday 7th November to outline their proposals for a new village at Wilburton and how their plans may affect Milton.

Their plans showed in our area: Widening the A10 to 10m whilst retaining it as two lanes.

Traffic light controlled junctions at Ely Road and Landbeach Road junctions.

Demolition of the Butt Lane bridge and replacement with a pedestrian crossing. Replacing the Jane Coston bridge with a bus/cycle bridge.

Changes to the Tesco roundabout and bridge approach ramp.

Alterations to the High Street and Cambridge Road including replacing some bus shelters.

Milton Parish Council would expect to consult with the village if any of the proposals were likely to get approval.

Over recent years many developers have put proposals forward for new villages in Cambridgeshire and generally they have not gained approval. *JC*

R B
Electrical

**Your Milton
Domestic and
Industrial Specialists**

Tel. 365200

Parish Council

New councillors

Ian Davis and Phil Badley have recently joined the parish council filling the positions vacated by Chris Lock and Liz Baker who both recently stood down.

Recreation Land

Council agreed to pursue the purchase of agricultural land north west of the village for formal recreation (mainly football pitches).

Vandalism

There has been a spate of vandalism in the village with the new youth shelter and bins being damaged.

Youth Club Temporarily Suspended

The club has suffered from dwindling numbers of Milton youth attending the club and an increase of youth coming from outside the village. The club has been closed temporarily in the hope that when it reopens more Milton youth will attend.

Country Park

The District Council are considering handing over the management of the park to another body. They are also likely to introduce parking charges.

Cambridge Sport Lakes Trust

The following was reported:-

Land adjacent to Milton (to the East) and between Milton and Waterbeach, in the Parish of Milton, Waterbeach and Landbeach - change of Use to Rowing Lake and Country Park, construction of new and changed roads, a canal, bridges, embankment and boathouse including wardens' accommodation (2 residential units) - **refused**.

The planning application was received on 3rd June 1993 and was accompanied by an Environmental Statement (ES). At Planning Committee on 3rd November 1993 the Council resolved that, subject to the prior completion of a Section 106 Legal Agreement to secure appropriate management, to secure completion or reinstatement, to protect awarded watercourses through the site, to secure public access and to protect the public from payment of traffic management orders or highway alteration costs arising from the development, it was minded to approve the application.

The Section 106 Agreement had not been completed. In view of the considerable period which has lapsed since the preparation of the ES and the changes which the Trust proposed to make to the scheme, it was considered that the ES could no longer be relied upon to allow the Council to approve the application or to consider changes to the scheme without the submission of a new planning application.

(A new application is expected shortly.)

PHYSIOTHERAPY REFLEXOLOGY

LIZ CRADOCK

Grad.Dip.Phys.,MCSP,SRP,IIHHT

Chartered Physiotherapist
& Qualified Reflexologist

Tel. 01223 862501

Mobile 07714 052389

At 'Harmony', 6 High Street, Milton

COMMUNITY EDUCATION SPRING TERM 2006 AT IMPINGTON VILLAGE COLLEGE

Classes start week commencing 9 January 2006. Call for further details on times and course costs.

Please call 01223 200411 to enrol

TUESDAY

Acrylic Painting and Drawing
Beauty Workshop
Creative Card Making
ECDL Computing – to BCS Level 2
Food Hygiene Cert (level 2)
Interior Design for Improvers
Italian for Beginners
Lacemaking
Yoga – Dynamic Hatha for All

WEDNESDAY

Aerobics
Ballroom Improvers
Cheese Appreciation
CLAiT
Computing for Beginners
Creative Writing
First Aid for Child Carers (starts 22 Feb)
Food Hygiene Cert (Level 3)
Pilates
Reflexology
Yoga - Iyengar (Improvers)

THURSDAY

Italian Beginners
Pottery
Spanish for Beginners
Watercolour Painting

SATURDAY WORKSHOPS

– 25 FEBRUARY 2006
at Swavesey Village College
Please call 01954 230373 to enrol

Aromatherapy/Massage
Baby Massage
Ballroom Dancing
Carefree Computing
Creative Card Making
Creative Writing
Cook & Eat Vegetarian
Food Hygiene Cert
Improve your Digital Photography
Italian Taster (inc. lunch)
Jewellery Making with Beads
Life Drawing
Salsa
Spanish for Leisure
Sustainability
Tai Chi Corrections
Yoga (Beginners)
Yoga (Improvers)

Celebrate Christmas at All Saints' Church Church Lane, Milton (next door to the Hospice)

Carols by Candlelight
Tuesday 20th December 8pm
Followed by mulled wine & mince pies

Workers' Lunchtime Carol Service
Thurs 22nd December 1 – 1.45pm
For all who work in Milton (Organised jointly with the staff of Pi Technology)

Christmas Eve Crib Service
Saturday 24th December
4 - 5pm – for children & families

Christmas Eve Holy Communion
11.30pm

Christmas Day Holy Communion
Sunday 25th December 8am

Christmas Day All Age Worship
10.30 – 11.15am

For more information on any of the above
**please call the church office on
441007 or email
office@allsaintsmilton.org.uk
Please visit our website
www.allsaintsmilton.org.uk**

Christmas waste

13/12/2005 Black Bin
20/12/2005 Green Bin and Box
27/12/2005 No Collections
04/01/2006 Black Bin and Green Box
10/01/2006 Black Bin
17/01/2006 Green Bin and Box

Bin not collected?
Telephone 0840 450 063 by 3:30pm the following day (and 8pm on the scheduled day).

Wrapping Paper

The inks and the metallic content of some wrapping papers means they are not suitable for recycling or composting. Our advice is not to recycle or compost Christmas wrapping paper – please put it in the black bin.

Shapers

**Toning : Tanning : Beauty Salon
286 The Rowans : Milton : Cambs**

- ✓ Beauty & Holistic Treatments
- ✓ Toning Systems
- ✓ Tanning Systems
- ✓ Dermalogica Skin Care
- ✓ Schwarzkopf Hair Care

Open 9am – 9pm Mon – Fri & 8.30am – 4.30pm Sat
Tel. 01223 440888 www.shapers.co.uk

Landbeach and Milton Baptist Church

Sunday Services

10.30 am Family Service
6.30 pm Evening Worship

Midweek Home Group

Landbeach every Wednesday morning 10.00am

Tuesday Children's Club

last Tuesday of each month at 6.30pm
All are welcome to our small but friendly fellowship.
Further details may be obtained from Malcolm and Jenny Franklin,
Tel 01223 513567

Silver Service Taxi

Tel. Ian May C. 502609 or 07989197816

NEW LOOK NAILS Nail Extensions
Telephone Paula on Milton 511238

For all your airport and holiday travel
Supreme Drive 01223 514566

J.P. MORLEY Flat Roof Specialist
01223 863259

Aerobics Class - Milton Community Centre
Mon 6-7pm. Tel. Dianne on 01223 870454

Borderline - Gardens designed on
Computer. Tel. 01223 560490

Willows Aromatherapy & Reflexology Centre
Tel. 01223 860499 Mobile 0773 021 4705

Home Computing

Call Laurence on 01223 860242

Wardrobe Theatrical Costumiers
Tel 01223 518303

A C ALARMS - Security Systems
FREE QUOTE Tel. 01223 864016

**Lee Beamiss, General Carpentry &
Building Refurbishments** 0781 5118339

The above are waiting for advertising space.

Opening of Milton Surgery Library

As from 3rd January 2006, Milton Surgery will have a patient's library. To continue to use the service, there will be a small donation of 50p per book loaned out.

NEW APOSTOLIC CHURCH

1 Cambridge Road, Milton
**Invites you to come to our
Sunday Service 10.30 am**
(tea and cake after service)
Wednesday Service 8.00 pm
(choir practise after service)
Sunday School 9.45 — 10.15 am
(arts and crafts)
Everyone is heartily welcome
"Jesus Loves you"
www.nacukie.org

PUZZLE CORNER

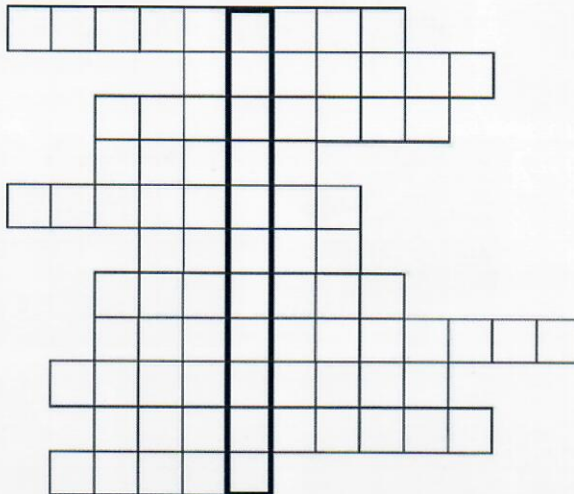
The prizewinners in the October issue were Stephanie Clarke of Ballard Close and Peter Howard of Butcher Close. The puzzle was to move from SLOW to FAST in 7 moves and I received no less than 5 different solutions! Here is one of them:

SLOW, SLAW, FLAW, FLAT, FEAT, FELT, FEST, FAST.

Congratulations to our prizewinners.

WIN A TURKEY

We shall be awarding a turkey again this year to the first prizewinner and a couple of Christmas goodies to the runners up in our December puzzle. The prizes will be distributed before Christmas, so make sure that your entries reach me by 20th December. Once again the turkey has been kindly donated by Petes Meats of Arbury Road.



Here are 11 items associated with Christmas.

PUDDING; CARDS; PRESENTS; BAUBLES; PANTOMIME; DECORATIONS; MINCE PIES; CHOCOLATE; SANTA; STOCKING; GOOSE.

If you enter them in the correct order in the grid, a well known pantomime (reading down) will appear in the highlighted area.

Send in the name of this pantomime and you stand a chance of winning the turkey.

Entries to Michael Spooner, 43A Old School Lane, Milton, Cambridge. CB4 6BS by 20th December. If you prefer to use email, end your entry to mjsmilton@tesco.net

Save £30 on your Water Bill

If you look at your last water bill part of the bill will be an Anglian Water sewerage standing charge. If the charge is £16 the bill is correct but if it is for £31 you are probably being overcharged.

The reduced charge is applicable if the surface water from your property does not go into the public sewerage system. For all modern houses and that means most of Milton the surface water from your roof discharges into soakaways and not into the public sewer.

To get the reduced charge you need to complete an application form which can be obtained by phoning Anglian Water on:

freephone 0800 1693271.

You will need your last water bill when you phone.

Richard Summerfield

Scrabble

The last scrabble evening for 2005 was on Friday 11th November. This was also our annual charity evening for which we charge a little more so that the winner can donate the prize money to a charity of their choice.

The winner was Sheila Badcock of Shelford, who scored 843 in her two games. She donated her winnings to the Milton Childrens Hospice. A pleasant evening was had with a few little nibbles and a few small prizes.

We also announced the winner who scored the highest average number of points per game during 2005. This proved to be Letty Burrell of Girton, with an average score of 401 per game. The runner up was Chris Chapman, also of Girton who averaged 386 per game. The consolation prize winner was Doreen Keen of Milton, with an average score of 257 per game.

Many thanks to those who come regularly to scrabble evenings, from Girton, Newmarket, Histon and Milton. The next meeting will be at 7.30pm in the Church Hall on Friday 13th January 2006.

I, AGONY, A GRIME SLANDER

YOGA in Milton

Monday 6.45 – 8pm

Milton Community Centre

Room 2 (upstairs)

All Welcome – Booking Essential

Contact: Cynthia Richardson

(Yoga Dip, Adv Yoga Dip)

01223 474242 for more information

Interested in working part time?

Do you want to get back into the work force?

Let us help you find a job.

WORKING MUMS

For more information contact:

Arlene on 440329 (local resident)

.....Not only for mums....

Milton Primary School

Poems written by children in Y5

Happiness

Happiness is multicoloured.

It smells like pretty scented flowers.

Happiness tastes like delicious chocolates.

It sounds like beautiful singing.

It feels soft and cuddly.

Happiness lives in the heart of a beautiful garden.

Anjuli

Happy

Happy is yellow.

It smells like the scent of flowers.

Happy tastes like chocolate cake.

It sounds like the laughs of a human.

It feels cosy and squishy.

Happy lives in the smile of a mouth.

Duncan

HOWARD'S WAY SCHOOL OF MOTORING Manual & Automatic Cars

- Male and Female Driving Instructors
- Patient and Friendly
- Top Grade 6
- Instructor Training
- Pass Plus Courses
- Intensive Courses
- Theory & Hazard Perception
- Motorway Courses
- Confidence/Refresher

HOWARD'S WAY WINDOWS

- Window Cleaning By Request
- Milton, Waterbeach, Landbeach
- Pubs, Clubs and Offices

Tel. 01223 862501

Mobile 07753 617310

E-mail Cradock@tesco.net

COUNSELLING and COACHING SERVICE

Offering help with anxiety, stress, abuse, depression, loss, relationship issues, work difficulties, personal growth.

For appointments please ring:-

01223 861510

or email:

kathylplatt@cambridge.uk.com

Kathy Platt MBACP(Accred), Dip. IIP

Colin Platt Dip. Life Coaching

C H LUMB (BUILDERS)

DRAINAGE - GUTTERING

UPVC FACIAS & SOFFITS

PATIOS & FENCING

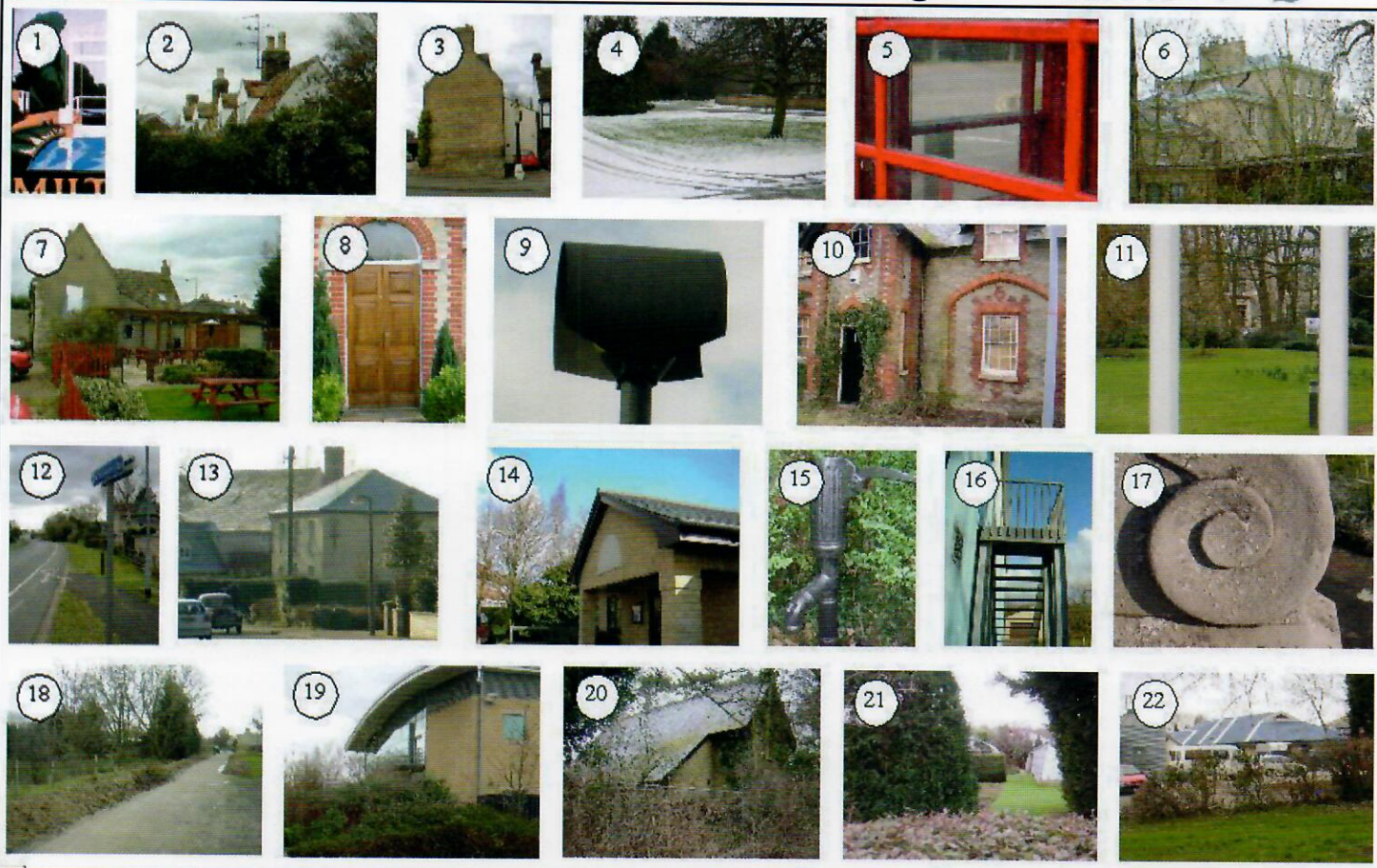
ALTERATIONS

01223 354402

Mobile 07762026290



Where's that? Picture Quiz



A little quiz for you to do over Christmas. Just note down the location in Milton of each picture and send your answers by the 10th January 2006 to Jane Coston, 67 Coles Road, Milton, Cambridge, CB4 6BL or email the answers to vv@miltonvillage.org.uk There will be a small prize for the winner.

Christmas Whist Drive

The Mammoth Christmas Whist Drive will be held on Tuesday 20th December at 7.30pm in the Community Centre. It would be nice to have a full house for once, a lot of work and shopping goes into it. The prizes are all well worth winning when all you pay is what would cost a cup of coffee and biscuit elsewhere. We aim to have a prize for everybody which is only because two ladies stand in the hot sun to organise a tombola at the Summer Fayre.

Please make it worthwhile organising and come along.

Mary Daniels

**Can you help the
Colts Football Club?**

Referees Wanted
Training can be given
Contact:-

Ian May 01223 521294
or Chris Drummond 01223 863615

**BOSCH
SERVICE
AGENT**

BENET GARAGE MILTON

Opening times:- Monday to Friday, 8.30am to 5.30pm, Saturday 8.30am to 12.30pm

TEL. 420380

**TYRESAVE
CENTRE**

M.O.T. TESTS WHILE YOU WAIT

BY APPOINTMENT

Air Conditioning Service Centre

Lubricare 1 Service
Change oil & filter
Check fluid levels tyres and lights
£22.50 labour

Full Service
& Engine Tune
£65 labour

Lubricare 2 Service
As lube 1 plus fit new plugs and
check all brakes
£47.50 labour

Bottled Gas Stockist

All prices plus parts and VAT

All Major Cards Accepted

Printed by Cambridge Evening News, Winship Road, Milton, Cambridge, CB4 6PP
Produced and delivered by volunteers. Designed and published by Jane Coston, 67 Coles Road Milton Tel. 861655
Editors - Jane Coston, Michael Spooner, Kate Marshall, Paul Capitain.

The future of Milton Country Park

South Cambridgeshire District Council is looking at different options for the future running and management of Milton Country Park to improve services and increase income

**Hear the options, make suggestions
and have your say on**

Sunday 22nd January
2.00pm (Meet at the visitor centre)

Options being considered include:

Introducing car park charges
Better use of the visitor centre
Recruiting more volunteers
New management for the park

Can't make it?

Send your comments and suggestions to
miltoncp@scambs.gov.uk or visit: www.scambs.gov.uk

For further information contact the rangers at the visitors
centre or tel: 01223 420060 e: miltoncp@scambs.gov.uk

Published & distributed by Milton Parish Council