

Issue No. 89 - October 2009

Milton Village View

Established 1991

Village News Sheet

Delivered Free
Circulation 1,850

Page 2 Milton Fayre, Hospice needs help, Minidigs
Page 3 What's On
Page 4 Local council news
Page 5 Milton Primary School
Page 7/8 Puzzle, W.I., Sport

Milton Pioneers "Foodshare"

Milton has made news headlines on BBC1 and BBC radio as pioneers of a new scheme called Foodshare, partnering local growers with charities. The project was launched on the Allotment by some Milton residents and in just six weeks, plot holders donated £500 worth (150kg) of produce to Children's Hospice.

The "Milton Kitchen Gardener" scheme has now been launched and you can donate fresh surplus fruit or veg at the "Donation Stations" at Milton Allotment or 1 Faulkner Close. The daily deliveries help the Hospice reduce their annual food bills by thousands, with the environmental benefits of reducing food 'miles' and waste.

Milton Primary School are dedicating a bed on their allotment with pupils growing for the children at the Hospice. All Saints' Church have also joined, and hope to inspire churches around the country to follow suit.

www.foodsharenetwork.org is encouraging allotments, kitchen gardeners, schools and churches to set up their own scheme. With easy step-by-step start-up guides, schemes are launching from New Zealand to New York. In the UK alone, if Milton Foodshare's success can be replicated, over £26m of food will be delivered to charities annually.

Listen to BBC interviews, show your support and spread the word at www.foodsharenetwork.org. To get involved in this 100% volunteer-powered project, please email mark@foodsharenetwork.org

The Milton Foodshare Team

The Big Lunch

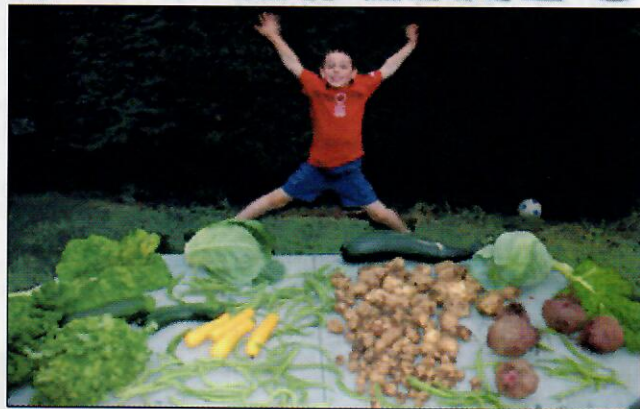


Sunday July 17th had been planned nationally as the day of 'The Big Lunch' - when neighbours would organise street get-togethers in an effort to promote more of a community spirit.

Unfortunately this initiative didn't receive much publicity - and the weather on the day was not promising, but the residents of Hall End have a long tradition of holding street parties and are not so easily put off! Indeed for us it was an opportunity not to be missed as the musicians in the close had arranged for their band to hold their planned 'rehearsal' outside - as a free concert for us all!

So, despite initial showers, tables were set out and the barbecue lit and all the families enjoyed a couple of hours of sunshine in which to eat, drink and chat, with the added bonus of fantastic 'foot-tapping' live entertainment from the 'New Essex Bluegrass Band'! *Continued on page 2*

foodshare



A daily Foodshare delivery to the Children's Hospice

College of West Anglia opens new facilities in Milton

This September saw the opening of fantastic new learning facilities at the College of West Anglia's Cambridge campus, based at Milton. The college, which is the first general further education college in Cambridgeshire to be rated 'outstanding' by Ofsted, has invested over £3m in the redevelopment of the campus, which includes a new teaching and learning facility and a new farm workshop.



Official opening on 23rd September of the new state-of-the-art Discovery building by Mr Hugh Duberly, the Lord Lieutenant of Cambridgeshire and our local Olympic equestrian event rider, Sharon Hunt

RECTORY FARM SHOP

CHRISTMAS POULTRY - ORDERS TAKEN FROM 24TH OCTOBER

CHRISTMAS BARN - OPEN FROM 24TH OCTOBER - DECORATIONS, LIGHTS AND GIFTS.

CHRISTMAS TREES - FROM THE END OF NOVEMBER

FIND US ON THE A10 MILTON BY - PASS ~ 01223 860374

COME TO RECTORY FARM SHOP FOR A MAGICAL CHRISTMAS

www.rectoryfarmshop.co.uk



Next Issue

due out beginning
of December

Items for inclusion in
the **Christmas Issue**
should be with one of
the Editors by the
12th November

Village View Publication Dates

December Issue - due out beginning of Dec
Closing date for articles - 12th November
February Issue - due out beginning of February
Closing date for articles - 12th January
April Issue - due out beginning of April
Closing date for articles - 12th March
June Issue - due out beginning of June
Closing date for articles - 12th May
October Issue - due out beginning of October
Closing date for articles - 12th September

Send us your news

Please help us keep the village informed by
sending us your photographs and news.
We are looking for articles that are about
50 to 100 words with a maximum of 200
words. For articles longer than 200 words
please contact one of the editors.

The best way to contact us is via email:
vv@miltonvillage.org.uk otherwise send
your articles to Jane Coston, 67 Coles
Road, Milton CB24 6BL Tel. 01223
563539 or contact one of the editors.

Email version available

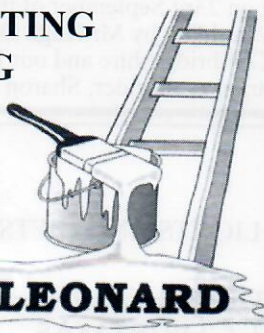
For an email copy email
vv@miltonvillage.org.uk and ask to be
added to the mailing list.

Notice

Whilst every effort is made to ensure accuracy
the publisher accepts no responsibility for errors
or omissions. Views and opinions expressed in
the Village View are not necessarily those of the
publisher or the editorial staff. The publisher
does not accept any responsibility for claims
made by advertisers.

PAINTING DECORATING GLAZING

Mobile
07860 453533
Phone/Fax:
01223 700800
(local resident)



Stephanies Unisex Hairdressing

Professional Hairstyling
For Men and Women
Tel: 01223 420526

49 Cambridge Road, Milton, Cambridge CB24 6AW

HARMONY

Hair & Beauty Salon
6 High Street, Milton, Cambs.
Tel. (01223) 863636

Hair, Beauty, Reflexology, Aromatherapy

The Big Lunch - Continued from page 1

Our grateful thanks to the band for making
the occasion so enjoyable for us - and
congratulations to them for coming second
the following week in the European
Bluegrass competition held in France,
where they represented Britain. We're very
fortunate to have such talent in our midst!

Ruth Henderson

Your Local Children's Hospice needs your help

The Milton Children's hospice is looking
for Collection Box Organisers and
Publicity Officers.

Both roles would involve a few hours a
month and full training will be given.
Your help will enable us to ensure that we
can continue to provide care to children
with life-threatening conditions and
complex health care needs and support to
their families.

If you are interested in becoming part of the
children's hospice at Milton and would like
to learn more about the work of EACH
please come along to our Volunteer Open
Day on Monday 12 October 2009 from
3pm-6pm. Places are limited so please
book early to avoid disappointment.
Contact Nicky Jackson or Beccy Turner on
01223 205180 or email:-
nicky.jackson@each.org.uk to book your
place and to answer any questions.

Registered charity number 10692894

Minidigs in Milton

The small archaeological excavations
which were proposed for Milton in May
were detailed in the April edition of the
Village View as part of the 800th
Anniversary of Cambridge University,
unfortunately they did not occur. We could
not find enough suitable sites but one of
our neighbouring villages, Cottenham had
some well established minidigs operating,
so those in Milton who had expressed an
interest in becoming involved in minidigs
were given the opportunity to get
experience of field archaeology at
Cottenham. I would like to thank all those
who expressed an interest in minidigs and I
hope those who went to Cottenham from
Milton, found it a rewarding experience.

Derek Booth

Parish Archaeological Warden

A BIG THANK YOU

Thank you to everyone who very kindly
donated and supported our stall for
Breakthrough Breast Cancer at the Fayre
recently. We had a super afternoon and are
delighted to let you know that with your
help we raised £270 for this very worthy
charity. Thank you again for all your kind
generosity and support.

Alice Hall & Karen Northfield

Milton Fayre 2009



Milton recreation ground came alive on Saturday 11th July when Milton held its Annual
Summer Fayre. The event was a huge success with fun, games, stalls and entertainment
for all, carrying on right through into the evening. The paintball alley, cap guns and rodeo
bull were very popular and the jeeps were fun too.

The music from our bands and male vocalist Simon Rose was brilliant, with people
dancing late into the evening. We were also lucky with the weather as the rain held off
until it was nearing the end. Feedback from stall holders was that they had a great day as
there was a super range of activities for all ages with brilliant organisation all round. I
would like to say thank you and well done to all the Summer Fayre Committee, who are
Rebecca Aldhouse, Jackie Tolliday, Mick Hagger, Steve Aldhouse, Vivian Hill and Diane
Hodgson for all their hard work, also thank you to all our sponsors and the people who
helped before and on the day to make this event a great success.

If anyone has any ideas for next years event please get in touch by emailing
miltonfayre@yahoo.co.uk or phoning Lynda Molloy on 01223 862093

Date for next years Fayre is Saturday 10th July

Well done to all for organising once again this wonderful village event - Editors

MJ POTTS

HEATING & PLUMBING
SERVICES LTD
01223 242544



- Boiler Installation - Gas & Oil
- Power-flush & Servicing
- Complete Bathroom Installation
- Tiling - Free Estimates

E-mail: malcolm.potts@btconnect.com
Unit 8, Ronald Rolph Court,
Wadlows Road, Cambridge CB5 8PX

Remembrance Day

You are invited to the
War Memorial in Coles Road on
November 11th
at 10.50 am

There will be two minutes silence at 11am after
which the words of

"They shall not grow old"

will be spoken and a wreath will be laid by the
chairman of the parish council

Scrabble

At the Church Hall

Charity Evening

Nov 13th

7.30pm - 10pm

Plus winner of 2009

"IAN OILS MY GARDEN GEAR"
Mary Daniels

Milton Outdoor Bowls Club

Jumble Sale

Saturday 10th October 09

Open 11am at

The Bowls Pavilion

Coles Road

Milton

Band Competition

In a band? Aged between 13 & 25?

Then we need you for the 3rd
Gamlingay Records

Battle of the Bands Competition

Saturday 14th November 2009

Gamlingay Community Centre

Closing date for applications

16th October

Application forms call

Bridget 01767 650510

Email - bridget@glockling.com

www.gamlingayrecords.org.uk

Milton Outdoor Bowls Club

Pre Christmas Concert

Saturday 28th November 09

Milton Outdoor Bowls Club present
a Brass Band Concert featuring

Waterbeach Brass Band

at Milton Community Centre

Doors open at

7pm for 7.30pm start

Tickets

£6 for adults

£4 for under sixteens

(to include light refreshments
during the interval)

Tickets are available from:-
Milton Community Centre and
Milton Parish Council Office

Milton Day Centre

Coffee Morning

Bring & Buy

Cakes/Christmas Raffle

from 11am to 12 noon

on

Friday 13th November 2009

at Barnabas Court

Everyone Welcome

All Saints Church is pleased to
welcome back the

Great Eastern Ceilidh Company

to play at

All Saints

Supper & Ceilidh

to celebrate Harvest.

Last year's event was a real success
and enjoyed by many in the
community of Milton.

Saturday 10th October 2009

Milton Community Centre

7.30pm 'til late

Tickets: £10/£5 under 16 (includes
supper)

See publicity for more details

Phoenix

Annual General Meeting

We are holding our second AGM on
Wednesday the 28th October in the
Community Centre (Rooms 1 and 2)
6.30 for 7.15 pm.

If you are interested in this local
Charity, wish to know about the work
we do for our beneficiaries, and would
like to attend please contact Kate
Geeson the Company Secretary for
details.

As last year following the formalities
we hope to have a couple of
presentations from partners on their
links with the Trust and the benefits of
Social Firms like ourselves. All are
welcome

Barry Jefferson

The Phoenix Trust (Milton) Ltd

Unit 8, Milton Trading Estate

Tel: 01223 420669

e-mail kate@phoenixtrust.org

J.P Morley Roofing

Established 1985

All types of roofing

Flat Roof Specialist

Home Number

01223 863259

Mobile 07941 198771



MILTONgasservices

161938



- Servicing, Installation and Repairs
- Gas Boilers, Fires, Cookers and Central Heating Systems
- Powerflush Cleansing of Central Heating Systems
- Energy Efficiency upgrades
- Landlord Gas Safety Checks and Certificates

Contact - Eddie Kikas

Your Local Gas Specialist

Tel / Fax : 01223 861810

Mobile : 07831 228181

Email : miltongas@btinternet.com

www.miltongas.co.uk

29 Landbeach Road, Milton, Cambridge CB24 6DA

CLIVES GARDENING SERVICES

For all your
basic garden
maintenance
needs

01353 861897



Milton Parish Council

Parish Office Opening Hours

10am -12 Mon, Fri, Sat

5.30pm-7.30pm Wednesdays

If you wish to come to the Parish Office outside these opening hours, please contact us. Tel. 861447

or e-mail: clerk@miltonvillage.org.uk

Find Recycling Challenging?

Congratulations to Clare W, who won Milton Environment Group's "Recycling Challenge" at the Summer Fayre. Clare managed to sort a selection of rubbish correctly in 52 seconds flat. That was pretty impressive as some others took over two minutes to decide if the items should be disposed of in the Green Wheelie Bin (compostables), Green Crate (recyclables), Black Wheelie Bin (household waste) or indeed recycled at Milton Dump (batteries) or at Tesco Car Park (tetrapaks). Uncertain recyclers had two seconds added to their time for every item put in the wrong bin.

The "Challenge" generated interest and competition and attracted parents and children alike to the stall, where they could also collect an energy-saving light bulb or a "PowerDown" unit which automatically turns off peripherals (speakers and printers) when you turn off your personal computer.

The Group also asked people how much insulation their houses have, and mapped the village with the information gathered.

Clarke Brunt displayed graphs of the energy used by and generated from his house which has photovoltaic panels which generate electricity from the sun, the surplus of which is fed back into the grid and solar panels which heat water. The Group also demonstrated a "Current Cost" meter which displays the amount of energy being used in a building continuously. The Group has four meters for loan to households in the village. If you'd like to borrow a meter to check you own usage, please contact Clarke on 01223 502400 or clarke.brunt@viridis.net. **Anna Bradnam**



Parish Councillors on their most recent annual tour of the village looking at specific areas of concern

Barnabas Court

Specially designed accommodation for older people in Milton

Some villagers have been asking the parish clerk how they could be considered for a flat to rent in Barnabas Court. These are for people over 55, with a connection to Milton, and are owned by Cambridge Housing Society. However, any vacant flats are allocated by South Cambs District Council to people already registered with Home-Link and judged as needing a new home. Since February 2008 the Council and its partner landlords now allocate their empty properties by advertising them in a fortnightly magazine called Home-Link, available free of charge from Waterbeach Post Office. There is also often a copy in the Milton Parish Office. You can get it sent to your address by subscribing if you want to follow it regularly. The advertisements are also available on the internet at www.home-link.org.uk. You can register your application on the same website or you can request an application form by telephoning 03450 450 051.

The District Council can help you bid for advertised properties and can also send you an edited version of the adverts that you may bid for. If you require any help with the application or the bidding process please telephone 03450 450 051.

We also recommend that you give your name and telephone number or e-mail address to the Parish Clerk's Office so that they can notify you when there is an opening at Barnabas Court.

Cycle route

Milton to Impington

Cambridgeshire County Council approved a scheme on the 29th September 2009 to provide a foot/cycleway along Butt Lane to Impington. The County Council have stated that this may mean that the school bus, which was won by appeal, may be lost, as the route may be deemed safe when the cyclepath is in place for an accompanied child to walk to school but in practice many local residents believe it will still be unsafe for children and have voiced their concerns. The County Council held a consultation event in late August at short notice but following pressure held another event in early September. Residents had until the 10th September to comment on the scheme.

At the September Parish Council meeting local residents voiced their concerns and one resident spoke in favour of the scheme. Both the Parish Council and the Milton Primary School Governors wrote raising issues about the route and opposing the scheme if the school buses, which presently carry over 200 children, were to be taken away as a consequence.

I presented a petition to the County Council Cabinet meeting of 350 signatures (gathered in only 5 days) opposing the scheme if the school buses could not be guaranteed.

The County Council have stated that stakeholders will be invited to a meeting / workshop to discuss the detailed design. The stakeholders invited will be Milton and Impington Parish Councils, County and District Councillors for both patches and perhaps representation from the Cyclists Touring Club and Cycling Campaign.

The problem is that if the school bus is taken away I know that it is very difficult for parents to organise a school bus. It needs the bus company to agree to run a bus only during term times for the children and experience prior to 1992 showed at that time it was impossible for parents to organise - so there were no buses for the children.

Jane Coston

Please note the above is not written as a member of any committee or group

Milton Park & Ride - extension of car park

The Park & Ride site just off Butt Lane in Milton opened in 2008 with 500 car parking spaces. Original plans for the site provided for an expansion to 1,000 spaces which would be constructed on a phased basis.

The second phase for an additional 250 spaces started on 22 September. It is anticipated that some of the spaces will be released in time for Christmas with the remaining amount fully operational early in 2010.

Cambridgeshire County Council is managing the scheme, with Jackson Civil Engineering building the new site and Atkins acting as consultants.

A14 Bridge Lights and CCTV

Closed circuit television cameras have now been installed on the Jane Coston Bridge - 5 years after it was opened. The CCTV was originally planned to be available when the bridge opened but has been subject to long delays.

The lights were vandalised some time ago but work is expected to start on the 12th October to replace them with special reinforced polycarbonate bowl lanterns, these will offer maximum resistance to vandalism. **JC**

SILVER SERVICE TAXI

Licensed Taxi Service,
Reliable, Local & Friendly

Ian May

Mobile 07989 197816

Tel: 01223 502609

email: ian@silverservicetaxi.co.uk

Multi-Seater 1 to 8 passengers
Airport & Group Bookings welcome
Special Needs A Speciality

www.silverservicetaxi.co.uk

C H LUMB

(BUILDERS)

DRAINAGE - GUTTERING

UPVC FACIAS & SOFFITS

PATIOS & FENCING

ALTERATIONS

01223 354402

Mobile 07762026290



**Rowans
Music**

Piano Tuition

**Steven
Levitt**

Tel: 01223 567427
Mob: 07769 561658

Email: Steven.Levitt@rowans-music.co.uk
15 The Elms, Milton, Cambridge CB24 6ZQ

Established 1980
CRB Enhanced Disclosure Certificate

Milton Primary School

Grafham Water

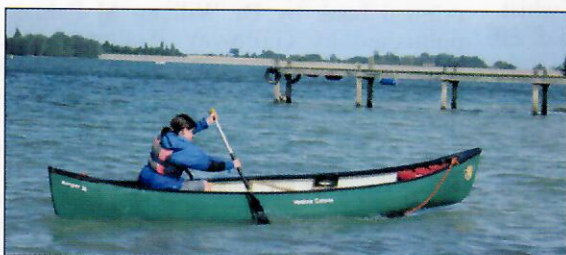
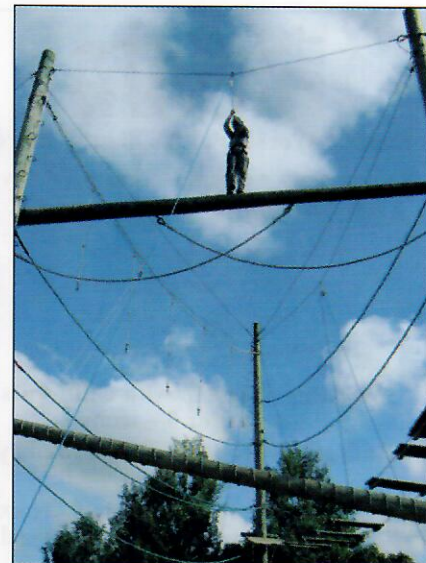
From the 9th to the 11th of September the children visited Grafham Water Outdoor Activity Centre. The children took part in a wide range of exciting and challenging activities ranging from High Ropes to Sailing to Archery and the famous Grafham Challenge. All the children who went had a fantastic time. Have a look at the photos to see what a great time we all had.

Some of the comments by the children:

"I couldn't believe it when our canoe sank, it was scary but hilarious at the same time."

"High ropes was scary but because my team supported me I got all the way across!"

"Grafham Water was the best trip I have ever been on, I will never forget it."



Romeo and Juliet - rock n' roll and blues



Pupils at Milton C of E Primary School performed Shakespeare's Romeo and Juliet to packed audiences at the end of term. Children from Years 5 and 6 combined their talents to act, sing and dance their way through a new version of the play, with rock n' roll and blues songs and modern dance pieces. There were two performances, with a Year 5 and a Year 6 class in each.



Catherine Phillips, Year 6 teacher said: 'It has been wonderful to see the many talents on show at Milton - the children and staff have worked incredibly hard to create such a professional production in a matter of only a few weeks'. Nikki Cutts, Year 5 teacher added: 'It is great that Years 5 and 6 can come and work together so well at the end of the year - we are so proud of them. They all enjoyed the traditional tale with modern music and dance routines'.

Visiting Composer

On 16th September Y5 & Y6 pupils had the opportunity to work with Douglas Coombes, a prolific composer and conductor well known throughout the UK. They had a fantastic afternoon!

He will continue to work with Y6 pupils on a project based on ideas from Carnival of the Animals by Saints Saens. A school-based performance of the children's work will take place on the 19th November. A small group of children will also take part in an interschools' concert at West Road. This is a wonderful opportunity for our children.

Milton Primary School

Humphries Way, Milton

Cambridge CB24 6DL

Tel: 01223 508783

email: office@milton.cambs.sch.uk

<http://www.milton.ccceducation.org>

Pilates

Mondays

Milton Community Centre

9.30 am - 10.30 am Mat - improvers

10.30 am - 11.30 am Mat - beginners

Tuesdays

Milton Primary School

6.40 pm - 7.40 pm Ball - mixed ability

7.50 pm - 8.50 pm Mat - mixed ability

Contact: Liz Dolman (01353) 749611 or (07768) 155278 for further details

R.B. Electrical LTD

N.I.C. Registered

Your Milton Domestic
& Industrial Specialists
25 Yrs Experience

Tel. 365200

LIZ CRADOCK

MCSP, MICT

Chartered Physiotherapist
and Reflexologist

Treatments at:

24 Spurgeons Avenue,
Waterbeach CB25 9NU

Tel. 01223 862501

Mobile 07714 052389

E-mail: cradock@tesco.net

#

Puzzle Corner

Congratulations to all who sent in answers to the Dingbats puzzle in the last issue.

The winners of the competition were Emma Harbours of The Sycamores, Shaun Reid of Butchers Close and Paul Mutimer of Fen Road.

The answers were:

1. O my aching back
2. Fed up to the back teeth
3. Out on a limb
4. Nothing to write home about
5. Cross country run
6. Potter around in the garden
7. The good the bad and the ugly
8. Robin Hood
9. OK by me
10. Cash on delivery
11. Count me out
12. Down in the dumps

The puzzle this month is in the form of a grid. A statement is coiled in the grid below. To spell it out, start with one letter in the bottom row and move to an adjacent letter in any direction. One letter is not used.

S	W	O	R	U	A	N	Y
I	E	R	T	O	S	D	S
P	I	U	H	T	H	W	D
A	C	T	E	N	T	O	R

Send your answer to Michael Spooner 43a Old School Lane MILTON Cambridge CB24 6BS or if you prefer email to mjasmilton@tesco.net

The closing date for entries is 9 November. There will be prizes for 3 winners.

Remembrance

When war is done
And men come home
Do they stay or travel far
And always are reminded of their past
And of those who gave their lives for us
Many like the guns stay silent
And do not make a fuss
In time they will tell us
That what they did was just
And each year in November
On Remembrance Day
The guns will break their silence
The bugles will sound their call
The flags will dip in honour
To those who gave their all

Dickie Bird

Milton W.I.

We have had some very interesting and informative speakers at our summer meetings and a coffee morning. We started in May with Andrew Morton who with some companions drove across the USA on Route 66 to raise money for Motor Neurone Disease research. His mother-in-law who had a Minstrel Group died of the disease.

They drove across in a 1974 Pontiac convertible (11 miles to the gallon) which was purchased in Sacramento and they were sponsored by Avis cars. The journey started in Chicago in an Avis hire car while major repairs were done to the automatic transmission of the Pontiac. They had a team song which was 'Happy Wanderer'. A lot of the old gasoline stations on Route 66 have been preserved in their original condition and the intrepid team tried to stop at each one of them.

In St. Louis, Missouri they did some fund raising and raised \$1000. In St. Louis there is still the old Union Station, which was the largest station in the USA but is now a conference and shopping centre. St. Louis also has a large and beautiful botanic garden. From there they travelled down to Springfield, Missouri and on to the beautiful Ozarks (hillbilly country) then Carthage and some old battlefields. There is also the 66 Drive-in theatre. On they drove for 16 miles through Kansas not a lot considering the size of this state, on to Oklahoma. Then Texas and Amarillo where they found a gigantic patchwork shop, cattle ranches and a monument where 10 Cadillacs are buried in concrete. You can spray paint if you wish. New Mexico came next and because there had been a substantial rainfall the desert was in full bloom. Must have been a magical sight. On through Sante Fe with all the old architecture with its Mexican influence. There is a large Indian Reserve where the Indians make their lovely silver jewellery. Then they come to the Continental Divide, which is the highest point on the route. Arizona is next with the Painted Desert and the Petrified Forest. Very bleak area. There is the 'Wigwam Hotel' with the rooms shaped like wigwams but in concrete. There is this enormous Meteor crater 150ft across and 500ft deep, it is used for Lunar training.

They stayed at Flagstaff so that they could visit the Grand Canyon which is 350 miles long then over the Sitgreaves Pass to California seeing the wild Mules on the way (around 10,000) which are protected. Passing the old London Bridge and over the Mojave Desert in to California and Santa Monica on the Pacific. The journey took 13 days and raised £8,500, which purchased a lot of specialist equipment. It is difficult to find the true route of the old Route 66 as it was removed from the road maps back in 1984 and a lot of it has been abandoned or built on etc.

We were taken in to the realms of Forensic Science, in June by Gerry Metcalfe.

Gerry studied handwriting and apparently this is still taken as absolute proof of either guilt or innocence today even over DNA. No one writes their signature exactly the same twice, and we saw some instances of this. Also the modern printers that we all use do not leave any tell tale signs like the old typewriters. I think we all went home to practise our signatures just to see if we could prove Gerry wrong.

We had a talk by Deana Hudson called 'The Mistress, her Maid and the Men their lives'. Deana worked in the RSC theatre at Stratford making costumes. She still makes wonderful dresses. She brought along a large collection of various dresses, underwear and shoes to show us. Wendy Stanley was dressed up in the Victorian underwear and the dress. To be dressed like that must have been quite uncomfortable and on a hot day I would imagine unbearable, no wonder they needed smelling salts to revive them. Little girls were put into a corset at the age of 9 months. Their feet were much smaller than ours are today as Deana had some size 2 1/2.

In 1790 an English man, Thomas Saint, made the first sewing machine. The French invented a machine to do chain stitch but the workers destroyed them as they thought they would be out of work. The USA produced the first lockstitch machine. Ebenezer Butterick made the first dressmaking pattern in 1863 and within 13 years had formed a large pattern empire. Next was James McCall at the beginning of the 20th century. Altogether quite an insight into how the Victorians dressed.

We have some excellent speakers booked for the future. In October Bill Wittering will tell us about an imaginary historic train journey between Kings Cross and Cambridge, November Ken Smith tells us about the East Anglian Food Bank and December Mary Ellis talks about 'Sheets and Sausages', life running a B&B.

You are all welcome to come and join us on the third Tuesday of the month at 7.30p.m. at the Community Centre. December it is the second Tuesday.

Should you wish to come along our President is Veronica Hinchliffe tel.01223 441464.

Jan Chessum

HOWARD'S WAY SCHOOL OF MOTORING Manual & Automatic Cars

- Male and Female Driving Instructors
- Patient and Friendly
- Top Grade 6
- Instructor Training
- Pass Plus Courses
- Intensive Courses
- Theory & Hazard Perception
- Motorway Courses
- Confidence/Refresher

HOWARD'S WAY WINDOWS

- Window Cleaning By Request
- Milton, Waterbeach, Landbeach
- Pubs, Clubs and Offices

Tel. 01223 862501
Mobile 07753 617310
E-mail Craddock@tesco.net

Lee Beamiss Carpentry & Building

Tel 01223 440001

Mobile 07815 118339

web site www.leebeamiss.com

email enquiries@leebeamiss.com

All your re-upholstery needs
"COVERED"

S.PROCTOR
UPHOLSTERY

Antique & Modern Domestic & Commercial Foam Cut To Size, D.I.Y Sales

Family Trade Since The 1940's

TEL.01223 440430

Email: shaun.proctor@tesco.net

UNIT 9 PEMBROKE AVE, WATERBEACH, CAMBRIDGE, CB25 9QP



John Poulter and Jim Daniels

Bowls Finals

On Saturday 12th September Jim Daniels (Milton Outdoor Bowls Club) was in three finals at the Cambs & District Finals held at Cottenham. In the Evening News it was reported that Deadly Daniels was in 3 Finals. The result was that Deadly Daniels did the Double. He won: - The Mens Singles and The Over 60's Singles. The picture shows Jim having just beaten John Poulter of Balsham in the mens singles.

Bob Waters

News from the Community Centre

After a relatively quiet period during the summer holidays, all our regular groups have now started up again. This term we have three new groups - Aerobics and Body Tone on a Friday morning in the main hall, Watercolour Painting, run by IVC Adult Education upstairs on a Tuesday morning and Taiji (relaxation and exercise) on a Tuesday evening in the Annexe. The Saturday morning Pilates class is now running an extra session for beginners and we also have Pilates on a Monday morning (2 sessions) and a Thursday evening. Pilates seems to be a very popular activity in Milton!

Saturday and Sunday mornings are generally a busy time at the Community Centre, with up to 4 Colts football matches being played (boys and girls) and up to 8 ladies netball matches taking place on the courts.

The Community Centre, Annexe and Youth Building are all available to hire for Birthday Parties, Weddings, Social/Fund Raising etc. To enquire, ring Andy on 862763 or email, mcc@miltonvillage.org.uk

Andy Gray

Community Centre Manager

Cricket Club AGM

Milton Cricket Club's Annual General Meeting will be on Friday 13 November, 7.30pm at The Sycamores. All players and parents representing senior or colts team players welcome. Nominations for elected positions should be sent to the secretary (by emailing jonamphlett@hotmail.com) by Friday 30 October.

Grant approved for Country Park

At a meeting on the 16th July 2009 South Cambridgeshire District Council approved the grant of up to £261,000 to Cambridge Sport Lakes Trust for the re-development of the Visitor Centre.

Adult Education Impington Village College

We offer a range of courses in art, craft, dance, fitness, languages and many more. Courses are run from 5 weeks to 10 weeks. We offer Saturday workshops once a term.

You can look at our website for course information

www.impington.cambs.sch.uk

Contact the Adult Education office for course information and to book on courses

Telephone: 01223 200411 Email:

community@impington.cambs.sch.uk

The office is open Monday to Friday 9.30am to 1.30pm,

Tuesday and Wednesday evenings

(adult education term time only) 6.30pm – 9.30pm.

Triples Winners



John King, Joy King, Tony Lilleyman (Captain), Pauline Waters, Jim Daniels, Angela Crush, Ray Daniels, Bob Waters, David Waterson

Congratulations to the triples team of nine Milton bowlers who won the final of the Frank Turner Cup, in an Ely and District competition. The game was played on 6th September at Chippenham Bowls Club against a team from Bottisham Bowls Club. It was a pleasing way to round off the end of the outdoor season for the club after a busy five months of league games and club competitions.

Pauline Waters
President

Godden Auto Services Ltd

Benet Garage, Cambridge Road, Milton, Cambridge CB24 6AW

Servicing and repairs to all makes of vehicles

MOT TESTS WHILE YOU WAIT

Web site

www.goddenautoservices.co.uk

By appointment only

All major
credit cards accepted

Tel: 01223 420380

Opening times: Monday to Friday 8.30am - 5.30pm, Saturday 8.30am - 12.30pm

Printed by Cambridge Evening News, Winship Road, Milton, Cambridge, CB24 6PP

Produced and delivered by volunteers. Designed and published by Jane Coston, 67 Coles Road Milton Tel. 563539

Editors - Jane Coston, Michael Spooner, Kate Marshall, Paul Capitain.