



## Milton Primary School Goes Solar!

Milton Primary School has launched an exciting new initiative to become a more energy-friendly, sustainable school. This project, set up by the school and eco-council, is to help us to learn about and become a more carbon-friendly, environmentally sustainable school through the use of solar energy.

Launched in November with a "Green Day" theme, the Milton Solar project got off to a flying start including a competition to design a mascot for the project, won by Molly in class 5.



Part of the initiative of the solar project is to utilize some of the roof space to fit solar panels, enabling the school to get a clean, sustainable electricity supply.

Funding is a key part of the project: our target is £15,000. You can read more about the school activities, plans and progress on the school's dedicated webpage, at: [milton.cambs.sch.uk/site/24228-solar-schools](http://milton.cambs.sch.uk/site/24228-solar-schools)

Why Solar? Our school building is not the most eco-friendly and we are constantly working to reduce our energy costs. This solar panel project will help us to work together to reduce our carbon emissions and learn and live more sustainably by changing to clean energy supplied by the sun and reducing our energy costs and carbon footprint.

The school has a huge amount of roof space, some of it openly south facing. We have a great opportunity to take advantage of space for solar panels, saving the school on energy costs which would allow us to invest more in our children's education.



Funding is a key challenge. In order to achieve our aim of being a 'Green school' using clean energy, **we need your help to raise £15,000** in capital to purchase a solar system. Donations can be made on the school website by purchasing solar panel tiles. The more tiles we can sell the closer to our target. All donations are gratefully received, so please tell your friends, family and colleagues....

Also, are you involved in some way with Sustainability or 'Clean Energy'? The schools & eco-council would love to hear from you and learn how your changing the world. If so, please contact the school at: [office@milton.cambs.sch.uk](mailto:office@milton.cambs.sch.uk)

## Easter Egg Hunt 2014: Your Country Park needs YOU!

The Friends of Milton Country Park are looking for local clubs, groups and businesses to take part in the 2014 Easter Egg Hunt. We provide you with chocolate eggs to give out, you get a stand and a chance to meet 250 young people and their families. Stands are hidden around the park for children to find.

We also need volunteers to help manage entries and direct people around the park. If you would like to be part of the Easter Event 2014 you need to be available on Sunday 20th April between 1:45 and 4:15pm. Please email Liz Cook at [liz@elizabethcook.co.uk](mailto:liz@elizabethcook.co.uk) if you would like to take part.

Liz Cook

### SILVER SERVICE TAXI

*Licensed Taxi Service, Reliable, Local & Friendly*

**Ian May**

**Mobile 07989 197816**

Tel: 01223 502609

email: [silverservicetaxi@gmail.com](mailto:silverservicetaxi@gmail.com)



Multi-Seater 1 to 8 passengers

Airport & Group Bookings welcome

Special Needs A Speciality

[www.silverservicetaxi.co.uk](http://www.silverservicetaxi.co.uk)

**Celebrating over 10yrs Supplying Taxi Services in Milton**

## In This Issue...

- Easter Events
- New Cygnets Sessions
- Community Lifeline Service

*And much more!*

## Contact Us

Send us your news and photos:

**vv@miltonvillage.org.uk**

1 Knights Way, Milton, CB24 6DE

Deadlines for articles are:

**12th January**

**12th March**

**12th May**

**1st September**

**1st November**

Issues will be published approx.  
2 weeks after the dates above.

## Online Archive

Find back copies of Village View  
(back to April 2011) on our website:

**milton.org.uk/mvv**

Printed by Cambridge Newspapers Ltd.

**Delivered Free  
Circulation 1,850**

### Publisher's Notice

Whilst every effort is made to ensure accuracy the publisher accepts no responsibility for errors or omissions. Views and opinions expressed in the Village View are not necessarily those of the publisher or the editorial staff. The publisher does not accept any responsibility for claims made by advertisers.



**Forest  
Stewardship  
Council™**

Milton Village View is printed on  
FSC approved paper.

**Stephanie's**  
MILTON'S UNISEX HAIRDRESSERS

Professional Hairstyling for Men and Women

**Telephone: 01223 420526**

*Discount for all new clients*

49 Cambridge Road, Milton, Cambridge, CB24 6AW

## Free and confidential advice about support for adults with long-term needs and carers

A series of drop-in events has been organised to provide free and confidential information and advice to adults living with a long-term illness or disability, older people struggling with an age-related condition, and anyone providing unpaid support to adult family members or friends who could not manage without this help.

The drop-in sessions are being held on the last Wednesday of the month during 2014 at the Horizon Centre, 285 Coldhams Lane, Cambridge CB1 3HY (near the roundabout opposite Sainsburys). Come along any time between 3.30pm and 5.30pm for a cup of tea and to find out about the support available to you.

For more information phone 01480 377616 or visit [www.cambridgeshire.net](http://www.cambridgeshire.net) and search for "Adult Support Drop-in".

### The sessions will feature:

29<sup>th</sup> January – Discussion about Assistive Technology

26<sup>th</sup> February – Activity session: Chair-based exercise

26<sup>th</sup> March – Specialist information from the Village Benefits Advice Team

## Twilight at the Museums

As darkness falls, museums and collections across Cambridge are opening their doors into the night for an exciting evening of FREE drop-in and bookable family events,



taking place on Wednesday 19<sup>th</sup> February from 4.30-8.30pm in twelve venues across the city. Set out and discover the extraordinary world of Cambridge museums and collections after dark.

Whether it's experiencing the sights and sounds of ice at The Polar Museum, journeying by torchlight through the Botanic Garden Glasshouses or creating amazing

photographs in the evocative setting of the Museum of Technology, there will be plenty to explore! Get ready for the adventure by visiting [www.cam.ac.uk/museums/twilight](http://www.cam.ac.uk/museums/twilight)

The full list comprises: the Farmland Museum and Denny Abbey at Waterbeach, the Museum of Archaeology & Anthropology, Cambridge University Botanic Garden, the Museum of Cambridge (Folk Museum), Cambridge Science Centre, the Museum of Classical Archaeology, Fitzwilliam Museum, Kettle's Yard, the Polar Museum, the Sedgwick Museum of Earth Sciences, the Cambridge Museum of Technology and the Whipple Museum of the History of Science.

**PAINTING  
DECORATING  
GLAZING**

**Mobile  
07860 453533  
Phone:  
01223 700800  
(local resident)**



**B.J. LEONARD**



**M.J Potts**

**HEATING & PLUMBING  
SERVICES LTD**

- GAS SAFE REGISTERED
- Boiler Installation - Gas & Oil
- Complete Bathroom Design and Installation
- Landlords Certificates
- Power Flush
- Tiling
- Under Floor Heating
- Gas Boiler Servicing
- Free Estimates

\* Covering Cambridge for 30 years \*



**Ph: 01223 242544**

Email: [malcolm.potts@btconnect.com](mailto:malcolm.potts@btconnect.com)  
Unit 8, Ronald Ralph Court, Waddees Road,  
Cambridge, CB5 8PX



2163



# DIARY DATES : Sept — Nov

See p.9 for more events at the pubs.

## February

**Sun 16th** Messy Church, All Saints, 3.30-5.30pm

**Sun 16th** Birdbox Making, Milton Country Park. The Friends of Milton Country Park will show you how to make a bird box. Turn up anytime from 10.30am to 3pm and build a wooden birdbox to put up in your garden, £7.50 per box made.

**Weds 19th** Twilight at the Museums, 4.30-8.30pm (See p.2 for details.)

## March

**Weds 5th** Holy Communion for Ash Wednesday, All Saints, 8pm

**Sun 23rd** Sport Relief Mile, Milton Country Park, 8.30am-5pm (See below for details.)

**Sat 29th** Hand in Hand – A day of worship, teaching and prayer for women, All Saints (See below for details.)

## April

**Sun 6th** First Sunday Celebration, All Saints, 6.30pm

**Weds 16th** Mothers Union Holy Week Meditation, All Saints, 7.30pm

**Thurs 17th** Maundy Thursday Holy Communion, All Saints, 8pm

**Fri 18th** Messy Easter, All Saints, 10am

**Fri 18th** Hour at the Cross, All Saints, 2pm

**Sun 20th** Holy Communion, All Saints, 8am

**Sun 20th** Easter Celebration with Holy Communion, All Saints, 10.30am

**Sun 20th** Songs of Praise, All Saints, 4pm

**Sun 20th** Easter Egg Hunt, Country Park, 2-4pm

See [www.milton.org.uk/diary.html](http://www.milton.org.uk/diary.html) for more event details. See [www.miltoncountrypark.org](http://www.miltoncountrypark.org) for more park events.



## Lent Matters

On Wednesdays in Lent, the Mothers Union will be running a series of Lent lunches in the church hall. Just turn up at 12.00 for a simple lunch followed by a talk. The speakers will be: Revd Valerie Kilner, Jackie Metcalfe, Revd Paul Butler, Julia Chamberlin, John Baker & Revd. John Proctor. All welcome.

## EACH Events

In 2014 we're celebrating our 25th anniversary as Milton hospice was opened on 1 August, 1989, by Diana Princess of Wales. We'll keep you updated in future MVV editions and at [www.each.org.uk](http://www.each.org.uk).

Plus: Hospice Gala Day 10th May & 5k/10k races at Wimpole on 18th May.

## Sport Relief Mile

Show Cambridge what you're made of at the Sainsbury's Sport Relief Mile in Milton Country Park, hosted by the Cambridge Medical Centre Ltd.

Choose your distance — 1, 3 or 6 miles — and do the Mile in a beautiful setting that will take you through trees, past lakes and along natural trails. Don't miss out; sign up to The Cambridge Mile now!

The event starts at 8.30am, with the first runners starting at 9.30am. There are also start times of 10.30am and (for 1 or 3 miles) 11.30am. For more information, visit [www.sportrelief.com](http://www.sportrelief.com) and find the Cambridge mile event.

## Hand in Hand



A day of worship, teaching and prayer, for women.

Saturday 29th March at All Saints Milton with guest speakers Jenny Peters and Elaine Storkey, the retiring president of Tearfund. Book online at:

[www.allsaintsmilton.org.uk](http://www.allsaintsmilton.org.uk)

**J.P.Morley**  
**Roofing**

Est. 1985

**All types of roofing**  
**Flat roof specialist**

1 Old School Lane, Milton

Home: 01223 863259

Mobile: 07941 198771

[josephmorley@btinternet.com](mailto:josephmorley@btinternet.com)



- Servicing, Installation and Repairs
- Gas Boilers, Fires, Cookers and Central Heating Systems
- Powerflush Cleansing of Central Heating Systems
- Energy Efficiency upgrades
- Landlord Gas Safety Checks and Certificates

Contact - Eddie Kikas  
Your Local Gas Specialist

Tel/Fax: 01223 861810 Mobile: 07831 228181

Email: [miltongas@btinternet.com](mailto:miltongas@btinternet.com)  
[www.miltongas.co.uk](http://www.miltongas.co.uk)

51 Bourneys Manor Close, Willingham, Cambridge, CB24 5GX



## Pilates Classes 2013

- Mon - Milton CC, 9.30am -- Mat/Ring Mixed Ability
- Mon - Milton CC, 10.30am -- Mat/Ring Mixed Ability
- Mon - Landbeach Village Hall, 9.30am -- Mat Mixed Ability
- Tues - Milton School, 6.25pm -- Ball & Mat Mixed Ability
- Tues - Milton School, 8.15pm -- Mat Mixed Ability Class
- Fri - Landbeach Village Hall, 9.30am -- Mat Mixed Ability

Pilates helps you to strengthen your core and back muscles whilst improving your posture and flexibility. Leave the class feeling stretched and relaxed. Class suitable for all ages, both men and women.



Contact Liz to book your space and check availability  
on 07768 155278 or email [liz.dolman@lovepilates.co.uk](mailto:liz.dolman@lovepilates.co.uk)  
[www.lovepilates.co.uk](http://www.lovepilates.co.uk)

Visit: [www.lovepilates.co.uk](http://www.lovepilates.co.uk) for full details and other classes held in the local area



## Albert Cowell, 1929-2013

Born in Bethnal Green on Cup Final Day, Albert was destined to be a footballer. Honours came at an early age with

selection for the Sea Cadets national football team and an invitation to join West Ham. This was short lived however, because his mother couldn't afford the bus fare to get him there!

Sport remained his main focus during National Service in Germany with the Royal Engineers where he also made several parachute jumps after transferring to the Airborne Division for more pay!

After moving to Cambridge, Albert joined Cambridge Town FC and scored 8 goals in his first match. He soon became a fans' favourite and with one fan in particular, Peggy, who he eventually married. Joining the Athenian League in the 1950-51 season, the newly named Cambridge City FC attracted huge crowds and Albert was part of it. He later moved to St Neots Town FC and played as a semi-professional for many years before joining Haddenham as player/coach and finally Milton.

An all round sportsman, Albert was also an excellent cricket wicket keeper and had a

good eye with the bat. He has been men's captain at Waterbeach Golf Club and was a founder member of Milton Bowls Club.

Having lived in Milton for 46 years, Albert was always a prominent member of the community, whether it was serving on committees or on the sports field. Peggy feels privileged to have lived in the village for so long and would not want to move anywhere else.

Peggy, Graham, Jan, Janette, Chris and granddaughters Sian and Laura would like to thank everyone for their help and kindness during Albert's illness and all the cards and support at the Crematorium. It was a great comfort to them. They would also like to thank everyone for their generous donations to 'Hospice at Home' which raised £821.50.

Albert was patient, practical, dependable, competitive, generous and a family man to the core. He will be sorely missed.

Paul Capitain

## Milton Village Fayre Saturday 12th July 2014 1.30-10 pm

Plans are well underway for this year's Fayre. We have a host of music & entertainment for everyone. This year we have changed the format slightly by having, with the exception of two dance groups, just music in the arena during the afternoon and evening. We will be supporting local bands from the Milton & Histon area, plus a band called Stiff who will be playing in the evening - more details to follow.

We would also like thank everyone for their continued support for this event, and to take this opportunity to mention again to everyone that the present committee are stepping down after this year's Fayre - so, please, if you would like to see this very popular community event continue, please get in touch by emailing us at [miltonfayre@yahoo.co.uk](mailto:miltonfayre@yahoo.co.uk) or by phoning Lynda on 01223 862093.

Thank you, Lynda Molloy



**For all your Concrete  
And Wooden Garden Products**

Paving, Edging, Ornaments, Bird Feeders, Planters, Trellis, Nest Boxes, Pot Hangers, Picnic Benches and much more

**A limited range of Pot Plants  
for your Garden, Planters, and Pot Hangers**

**Tel: 01223 420669**

[www.phoenixtrust.org](http://www.phoenixtrust.org) Unit 8, Milton Trading Estate

*Supported work experience for people with learning difficulties*

## London Marathon for Dr Hunt

In April, Dr Hunt of Milton Surgery is running the London Marathon in aid of EACH, the children's hospices charity one of which is located in Milton, and is hoping you will support him. He writes:

"I am really excited about running the London Marathon for the East Anglia Children's Hospices. They provide an oasis of love and care for children and their families when they really need it.

This is my first Marathon - so it is a little bit scary - but it will be a terrific challenge and raise money for a cause I believe in too.

I really appreciate all your support and thank you for any donations.

Cain"

You can donate now by visiting his fundraising page:

**[uk.virginmoneygiving.com/CainHunt](http://uk.virginmoneygiving.com/CainHunt)**

Paul Oldham



## Harmony

Hair and Beauty Salon



[www.harmonysalon.co.uk](http://www.harmonysalon.co.uk)

*Expert hair stylists for Men, Women and Children  
Beauty therapists offering a range of treatments*

Telephone **01223 863636** to book an appointment

6 High Street, Milton, Cambridge, CB24 6AJ

Open 9-6pm Monday - Friday  
9-2pm Saturday



**Dance Fitness Classes 2013**

**Milton School, Humphries Way, Milton**

**Tuesday Evening**

**7.20pm Zumba for all**

**Come along for a FREE taster session**

- Helps reduce cholesterol levels
- Adapts body to burn fat so you lose weight and tone up
- Improves cardiovascular fitness levels
- Decreases blood pressure and reduces stress levels
- Improves posture, flexibility and range of motion
- Have fun, make new friends and enjoy getting fit for once

Contact Liz on 07768 155278 or email [liz.dolman@lovezumba.biz](mailto:liz.dolman@lovezumba.biz)  
Liz is a fully Qualified Fitness and Licensed Zumba Instructor

Visit: [www.lovepilates.co.uk/zumba](http://www.lovepilates.co.uk/zumba) for full details and other classes held in the local area



## Everest Trek



At the end of March I am setting off with a group of people from Leeds University to trek to Everest Base Camp! We are trying to raise money for an AMAZING charity called Kidasha, whose aim is to protect and support vulnerable children in Nepal by, for example, providing them with a centre where they can play and learn basic literacy skills - this could be the only short period in the day when they are allowed to be a "child" and are not subjected to manual labour.

Roughly half of children aged 10-14 in Nepal are working and Kidasha aims to improve their quality of life by giving them a childhood. Any money people could donate would be GREATLY appreciated, even if it's just a couple of £s!!! I have lived in Milton all my life (18 years) and I was hoping to get support from the village! My fundraising page is:

[www.justgiving.com/Emily-Whitelock](http://www.justgiving.com/Emily-Whitelock)



Emily Whitelock

## Encouraging Imagination in Young Children

Creative Movements offer lively classes to encourage imagination and creativity in young children. Books and stories are used as tools to evoke ideas and interpretations, then the children are invited into imaginary worlds where they can explore themes and characters through role-play and creative dance.

Last term we started two new after-school classes at Milton Primary and they were a great success! The children explored stories such as Cinderella, The Selfish Crocodile and The Stick Man. They volunteered ideas as to why different characters acted the way they did and offered ways of solving problems. It is often surprising which characters are most appealing to young children (not always the archetypal good characters). We finished the term with a very magical class where the children became toys that came to life at night and danced around the toyshop to a soundtrack of festive music.

Classes (suitable for boys and girls) run on the following days:

Tuesdays at Milton Community Centre  
3.15pm – Make Believe for 2-4 years

Fridays at Milton C of E Primary  
3.30pm – Make Believe for 2-4 years  
4.15pm – Creative Movements for 5-7 years

For more details, contact [michelle@creativemovements.co.uk](mailto:michelle@creativemovements.co.uk) or call 07837844759. Everyone welcome to a free trial class.

(Photo from 'Charlie and the Chocolate Factory' workshop at Milton Community Centre)



Michelle Coates

## New Cygnets Sessions

From September 2014 The Cygnets Milton Pre-School will be offering "whole day" sessions in addition to the separate morning and afternoon sessions.



The new session times will be 9.15 to 2.45. Morning and afternoon sessions will continue to be offered.

Please contact [miltoncygnets@gmail.com](mailto:miltoncygnets@gmail.com) for more details and an application form.

**PHYSIOMOBILE**  
Sarah Koets BSc MCSP MACP  
Registered with the Health Professions Council

- Back and neck pain
- Sports injuries
- Post operative rehabilitation
- Arm, hand and shoulder problems
- Hip, knee and ankle pain
- Repetitive strain injuries
- Postural problems

Self referral accepted Recognised by all major insurers

Milton Surgery, 87 Coles Road,  
Milton, Cambridge CB24 6BL  
07790 512094 - [www.physiomobile.co.uk](http://www.physiomobile.co.uk)

## If You Live Near Milton, Fixing Your Car Doesn't Have To Be Expensive!

We've a reputation for treating our customers as if they're family.....so you get top quality, friendly service at some of the best prices in town. But don't just take our word for it, see our customer reviews at:

[www.cambridgeonline.com](http://www.cambridgeonline.com) or [cr-autoservices.co.uk](http://cr-autoservices.co.uk)

**Tel: 01223 423982**

Unit 2, Cambridge Rd Ind Estate (nr. Milton Country Park), Milton, CB24 6AZ



**TYRES & SERVICING**  
**At Probably The**  
**Best Prices in**  
**Cambridge**

Approved fitting centre for blackcircles.com

### Lots of FREE Stuff

- FREE Vehicle Health Check
- FREE Antifreeze check
- FREE pre-MoT check
- FREE Brake Fluid check
- FREE Battery check

**M.O.T's at**  
**the best price in**  
**Cambridge!**

**From only**  
**£27\***

\* not available to trade

## EACH Carol Service



East Anglia's Children's Hospices (EACH) Milton Christmas Carol service took place on Dec 17th and was a truly magical evening. Milton Road Primary School graced the stage with their beautiful renditions of some carol classics.

Readings were also enjoyed from Ely Friends Group, Milton friends group, an EACH volunteer, Reverend David Chamberlin and BBC Radio Cambridgeshire's Jeremy Sallis. We raised £1243.03 on the night, so many thanks to everyone involved for their support.

## Let's Hair It for Joe!

There can't be many teenagers who get rounds of applause for having his hair cut off. But uniformed services student Joe Esgate, 19, endured an emotional time at the Cambridge campus of the College of West Anglia, as he saw his life change in front of his eyes and helped a national cause at the same time.

Fellow students and friends gave money to sponsor Joe to have all his locks lopped off. And that meant saying goodbye to his hair which had taken no less than eight years to grow, reaching 60cm in length before the shears got to work at the campus at Milton just before Christmas.

His hair will be sent to the Little Princess Trust where it will be used to create wigs and hair-pieces from real hair for youngsters who suffer hair loss due to cancer treatment. Earlier this year singer Jessie J donated her famous black locks to the Little Princess Trust. Joe hopes to have raised around £300 for the Trust from losing his hair.

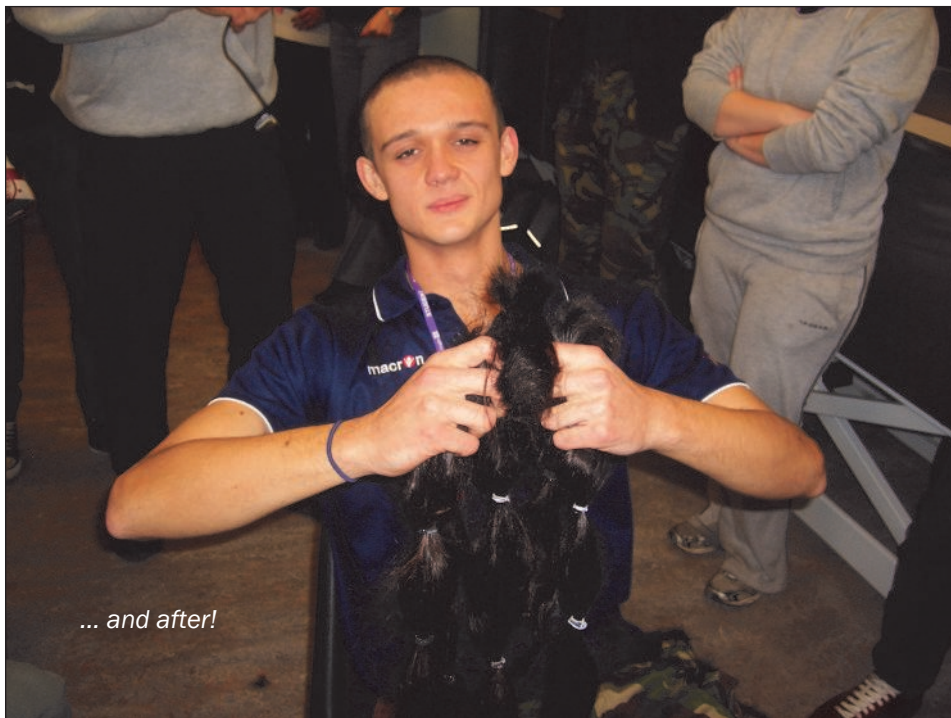
It took about an hour to remove Joe's hair and having started by feeling

nervous, he ended with cheers and emotion. He said: "It is hard not to feel emotional. It is eight years of my life."

Fellow uniformed services students, friends from Cambridge and his brother, Sam, were among those who had sponsored him, with those paying the most getting the honour of chopping off hair – with electric cutters in the dog grooming section completing his new cropped look.

Joe's new look will have to stay with him. He completes his course at Milton in the summer and hopes to hear in the New Year that he has won a place at Coventry University, studying disaster management and emergency planning. And he explained: "Because I hope to apply to become a retained firefighter I will sadly have to keep my hair on the short side."

"This course has given me a great opportunity to meet some great people. If you are looking for a career in any public or uniformed service, you are in the right place. Stick with it, make it through the course and gain a great grade out of it."



### AMBASSADOR LODGE BED & BREAKFAST

37 High Street, Milton, CB24 6DF  
(next to the Waggon & Horses pub)

Friendly, family-run B&B

Contact: Phil or Fizz Turner  
Tel: 01223 860168

www.ambassadorlodge.co.uk  
e-mail: ambassadorlodge@yahoo.co.uk

### C H LUMB (BUILDERS)

DRAINAGE - GUTTERING  
UPVC FACIAS & SOFFITS  
PATIOS & FENCING  
ALTERATIONS  
01223 354402  
Mobile 07762026290

### Michaela Overton F.CInst.L.Ex

- ◆ **Wills,**
- ◆ **Probate Assistance**
- ◆ **Lasting Powers of Attorney**

Tel. 07810 140967  
Free home visits





Photo: David Chamberlin

The choir get ready for Carols by Candlelight at All Saints Church

## Carolling round Milton

A merry time was had carolling in the Advent season. Funny moments included singing Once in Royal David's City to the tune of Hark the Herald Angels Sing, While Shepherds watched their Flocks By Night to the tune of On Ilkley Moor Bar Tat (yes it does fit, along with the umpa, umpas) and when CAMSAR visited with a car towing Santa in a lit up sleigh blaring Slade, at the Lion and Lamb pub.

Special moments: when the children sang

on their own in the pubs and you could hear a pin drop, a beautiful rendition of Silent Night, Edmund House community joined in the carols and singing that medieval carol, Gaudete.

A big thanks to the Guides who swelled the numbers at Barnabas Court and all of the hosts who provided food and drink, hic. O Come Ye, O Come Ye and Join us Next Year!

Angela Steele

## EACH Santa Run

Another year and another successful Santa Run! 330 Santas took part raising more than £7,000. There were some fantastic costumes worn by adults, children, babies and even pets!



Santas started off at the Grafton Centre, led by presenters from Star Radio. As the runners crossed the finish line they were greeted by the delightful sounds of Anglia Ruskin University Choir Vox Touring and the chance to indulge in delicious cakes and hot drinks donated by The Garden Café at Cambridge University Botanic Garden.

THANK YOU to all the many volunteers who gave their time so generously to help.

## Milton Wind Group

As a local woodwind teacher, I took a group of my Milton pupils to play some carols at the Jolly Brewers on 23rd December.

The plan was to play outside under the tree but the weather thwarted that somewhat! The management cleared a space for us in the restaurant and the children really enjoyed playing to their parents, friends and the customers!

We are now starting rehearsals for our next event - performing at the Music For Youth Regional Festival in Bedford in March.

Sheanna Ashman



Photo: Sheanna Ashman

### AFFORDABLE STORAGE

- ✓ SECURE STORAGE
- ✓ FLEXIBLE HIRE PERIODS
- ✓ COMMERCIAL & DOMESTIC
- ✓ RANGE OF SIZES AVAILABLE
- ✓ OFFICE & RETAIL
- ✓ 24 HOUR ACCESS
- ✓ EXCELLENT STORAGE
- ✓ CCTV MONITORED
- ✓ PICK-UP / DELIVERY SERVICE

01223 420440 / 07711 084164

email: mwheeler.bromley@btopenworld.com

UNIT 105, NORMAN INDUSTRIAL ESTATE, MILTON, CAMBRIDGE, CB24 6AT

## R.B. Electrical LTD

N.I.C. Registered

Your Milton Domestic  
& Industrial Specialists  
25 Yrs Experience

Tel. 365200

### PHYSIOTHERAPY

Treatment for sports injuries, back and neck pain, joint problems etc.

**Liz Cradock** MCSP, MICT  
Chartered Physiotherapist and  
Reflexologist, HPC registered

Recognised by major medical insurance companies

Treatments at:

'Wellbeing at 17', 17 High Street,  
Waterbeach CB25 9JU

Tel: 01223 860928 Mob: 07714 052389

Email: liz.cradock.physio@gmail.com

## Milton WI

As we approached winter, and in time for Christmas, Cheryl Brightly demonstrated the art of homemade chocolates and brought along a wonderful selection of chocolates for sale. Our Christmas Party night was attended by over 60 members who enjoyed an evening of fun and games along with the beautiful singing voice of entertainer Kristen Ellery. Refreshments included a delicious Christmas cake baked by Jan Chessum and decorated by Nathalie Garbolino-Riva.

The Munchers lunch in January will be at the Jolly Brewers, and our usual monthly meeting will be on 21st January with the speaker Ann Datson on "To be or not to be on the Stage" (a change from that previously advertised) and in February we shall be entertained by Jeff Harrison on "Through the Year in a Nature Photographer's Garden". We also have an outing arranged to the Department of Astronomy which promises to be a sparkling evening.

As well as our own meetings the local area headquarters at Girton arrange day and evening activities including Coffee, Cake, Craft and Chatter on the fourth Tuesday of each month.

Our meetings are held on the third Tuesday of each month in the Church Hall. New members are always welcome and anyone can come along for a taster meeting before deciding whether to join. Our President Gill Offley (01223 293231) or Secretary Bridget Crow (01223 441755) will be very pleased to hear from you.

Anne Newman



### Sunday services

#### 8am Holy Communion

A quiet, reflective way to start the day

#### 10.30am Morning Worship with Children's Groups

The 10:30am service is designed to cater for the whole church, from ages 0-100+. Refreshments served.

#### Evening Services

Monthly programme—see website.

#### Midweek groups & events

Little Rainbows Toddler Group, Parents & Under 1s, Lunch Club, Mothers' Union, Stitchers' Club, Reading Group ...

For full details of all these and more please visit

[www.allsaintsmilton.org.uk](http://www.allsaintsmilton.org.uk)

## Mencap Befriending

Would you like to make a difference to the life of a child or young person with learning disabilities in your area? Cambridgeshire Mencap is looking for volunteers for its Befriending & Family Support Schemes.

Our Befriending scheme matches volunteers with young people with learning disabilities, to enable them to socialise. It only takes a few hours of your time and it really does change lives.

We give training and support, but it's the young people who make it all worthwhile. Rob said "If you're thinking about volunteering; just do it, you'll never regret it."

Like to know more? Contact Marika Newman on 01223 883 141 or email:

[volunteer@cambridgeshiremencap.co.uk](mailto:volunteer@cambridgeshiremencap.co.uk)

## Landbeach and Milton Baptist Church

### Sunday Services

10.30am Family Service  
6pm Evening Worship

### Midweek Home groups

- Tues 7.30pm, Landbeach  
- Thurs 10.30am, 143 Waterbeach Rd.

All are welcome to our small but friendly fellowship. Further details from Maureen Clark, tel 01954 250118

## Police Twitter Alerts

Cambridgeshire Constabulary is urging people to sign up to a new social media scheme — Twitter Alerts — that allows it to release important information quickly in times of emergency.

Twitter users can sign up for the alerts (at [twitter.com/cambscops/alerts](https://twitter.com/cambscops/alerts)) to receive a notification directly to their phone via SMS. Users of Twitter for iPhone or Android will receive a push notification direct to their mobile.

Events that could require an alert include: natural disasters or severe weather, chemical, biological or terrorist incidents, or criminal activity that places the public in life-threatening harm

Alerts could warn of imminent danger, give evacuation directions, issue preventative instructions or give urgent safety alerts.

Paul Oldham

## IVC Alumni

Impington Village College has just launched an Alumni Network. As we approach the 75th Anniversary of the Village College, we are looking for former students to reconnect with. If you know of anyone who studied at IVC between 1939–2012 please extend our invitation to join the Alumni. More information can be found at: [www.impington.cambs.sch.uk/javascript/coming-soon.html](http://www.impington.cambs.sch.uk/javascript/coming-soon.html)

Amy Wormald  
Development and Engagement  
Manager

## Milton Scout Group Minibus

For hire to non-profit community and voluntary groups (section 19 permit needed)

T: Rob - (01223) 860160

E: [minibus@50thcambridgescouts.org](mailto:minibus@50thcambridgescouts.org)

W: [www.50thcambridgescouts.org/minibus](http://www.50thcambridgescouts.org/minibus)

### EMPLOYMENT OR FAMILY PROBLEMS?

\*Settlement Agreements\*Unfair Dismissal\*

\*Discrimination\*Breach of Contract\*

\*Divorce\*Children Disputes\*

\*Financial Settlements\*Separation Agreements\*

FREE INITIAL ADVICE

SMITH

MAY

SOLICITORS LLP

Barnwell House, Barnwell Drive,  
Cambridge CB5 8UU

BRIDGET GILTINANE – Family Lawyer

[bridget.giltinane@smslaw.co.uk](mailto:bridget.giltinane@smslaw.co.uk)

JOANNE MAY – Employment Solicitor

[joanne.may@smslaw.co.uk](mailto:joanne.may@smslaw.co.uk)

CALL 01223 415372

FREE PARKING

[www.smslaw.co.uk](http://www.smslaw.co.uk)

## STRIKE FIT

Fridays 1pm-2pm  
Milton Community Centre

also available

1 to 1 personal training

Contact : Alex Campbell  
Tel. 01223 862184 or 07746 122749  
Email [alex@alexercise.co.uk](mailto:alex@alexercise.co.uk)  
[www.alexercise.co.uk](http://www.alexercise.co.uk)



## Jolly Brewers

Tel: 01223 863895

A Very Happy New Year from the Jolly Brewers! A huge thank you to everyone who took part in the recent prize draw: we raised £100 for EACH.

Now showing BT Sports alongside Sky Sports. If there's a game you want to watch or any other sporting event just ask behind the bar.

**Regular Restaurant Events include:** Curry & Pint on Monday Nights and 'Beat the Clock' on Tuesday Nights (see website for details).

**Upcoming 'Special Occasions' include:** Valentines Night on 14th and 15th February and Mothering Sunday Lunch – an opportunity to spoil Mum! – on 30th March.

**Our popular Themed Nights will be available throughout 2014, starting with:** A Night of Authentic Thai Cuisine – 26th February and Pie Night – Chef's choice of Traditional Pie Dishes – 19th March. Menus for the above will be available on our website very soon, as will details of any offers.

Ruth Kivlin,

[www.jollybrewersmilton.co.uk](http://www.jollybrewersmilton.co.uk)

## Lion and Lamb

Tel: 01223 860202

Happy New Year from us all at the Lion & Lamb! Download one of the vouchers from [www.lion-lamb.co.uk](http://www.lion-lamb.co.uk) and save up to £10. Also: buy 10 and get 1 free draught beers and lagers with our Lion & Lamb Savers Club!

We have changed the scheduling of our Ladies Dinner Clubs and these will take place on the first Tuesday of the month so they don't clash with the Milton WI meetings.

**Upcoming events** include Psychic Suppers on 12th Feb and 19th March, Valentines Evening on 14th Feb, Soul Night on 28th Feb, and Mothers Day on 30th March. There will be a Live Music Event featuring the *Indietones* on 11th April at the Community Centre: tickets available from the Lion and Lamb. And save the date: our 3rd Annual Beer Festival is 22-27th May!

Our seniors menu is available Monday to Thursday from 12-3pm and we offer a variety of weekday dining offers: free puddings on Steak Night Monday, 2 for £15 Pie Night Tuesday and Wednesday, and 2 for £18 Fish Night Thursday.

Lawrence & Sally, [www.lion-lamb.co.uk](http://www.lion-lamb.co.uk)

## White Horse

Tel: 01223 860327

Wishing you all a happy and prosperous New Year! Thank you all for the kind support and friendship in 2013 - we look forward to seeing you all in the New Year.

**Special Events** coming up include Valentine's Day, 14th February: pre-booking is advised for this and Mother's Day. On 24th January there will be Country & Western music from Ashby and Jones, and A Sound of Pop Art on 28th February. Our Mini Winter Beer Fest is from 28th February to 3rd March.

**Regular Events** in Karaoke Friday on 7th February, 7th March and 4th April, Cash Bingo Wednesday 7:30-9pm, Quiz night Thursday 9pm and Balti night (also Thursday) 5:30-8:30pm. For other upcoming events please look out for our boards.

Many new specials coming up, with more homemade pies, burgers and vegetarian dishes. We will also be developing more Thai recipes following Chef's return from Thailand.

Ava, Alan, Adam, Emma, Kimberly,  
Shaun and James.

## Community Lifeline Service

The South Cambridgeshire District Council Community Lifeline Service provides a pendant alarm in your home which, when pressed, contacts a response centre. Help is available at the press of a button, whenever you need it, 24 hours a day, 365 days a year. Response centre operators are trained to assess your situation and can arrange for a keyholder contact to call, next of kin or the emergency services. A community lifeline is a valuable source of help for people of any age, whether you have a disability, are an older person enabling you to stay in your own home, living alone or have a special need.

A Community Lifeline is for anyone living in or near South Cambridgeshire. The cost of installation is currently £20.00. There is also a quarterly charge for the hire and monitoring of equipment. The charges for 2013/14 are £55.38, or £4.26 per week (without VAT). For more information and how to apply visit the SCDC web site.

There is also another option: the Borough Council of King's Lynn and West Norfolk also run a similar service. Their Careline Personal Alarm works exactly the same way and although we're not in their district they do cover Milton. Their installation charge is higher at £35.40 but their weekly rental is only £2.76 so you're saving £1.50 a week which mean you'll be in profit after ten weeks. So good value if you're on a fixed income!

Paul Oldham

### Sports Therapy Services

Sports Massage and Injury Rehabilitation



Don't put up  
with the pain

SAVE 25% on your  
first appointment

Additional offers available

call Lesley on 07940 110309  
or visit  
[www.sportstherapyservices.co.uk](http://www.sportstherapyservices.co.uk)

### Need glasses?

Buy direct from the manufacturer!

SAVE UP TO 75%

Just bring in your up-to-date prescription for a Top Quality bargain.

- Premium frames & lenses
- Emergency supply & repairs\*
- High/Complex prescription
- Free specs for NHS Vouchers\*
- Reglaze your own frame\*
- Large selection of frames

(\*T&C's apply, please call for details)

Please telephone for an appointment

01954 231545 or 07824 706969

email: [info@all-eyes.co.uk](mailto:info@all-eyes.co.uk)

[www.all-eyes.co.uk](http://www.all-eyes.co.uk)



Visit our Factory Shop:  
20 Norman Way Ind. Park,  
Over, Cambridge, CB24 5QE  
Mon-Fri: 9.00am to 5.00pm

### Swedish Massage



Contact Alex Campbell on 01223 862184

or 07746 122749

email: [alex@alexercise.co.uk](mailto:alex@alexercise.co.uk)

Benefits include\*:

- Relief from Stress, Anxiety and Tension
- Feelings of Deep Relaxation
- Improved Mood
- Improved Sleep
- A general sense of Wellbeing

Appointments available in Milton & Chesterton  
Sports Centre, Gilbert Road, Cambridge

\*Massage should not be used in place of conventional medical care. Always consult a GP or other Health professional for medical attention and advice.

## From the Desk of the Parish Council Chairman



On behalf of the parish council, I would like to wish everyone in the village a healthy and happy New Year. I would like to give special thanks to Milton resident Dave Collins and Parish Councillor Rob Farrington for putting up our Christmas lights again this year and contributing to the festive mood in the village.

I would also like to thank Milton resident and World War II veteran Ron Driver for his participation in November's Armistice Day Ceremony. This has become a favourite village tradition for many years and is always well attended. It is good to see traditions like this continued.



Thanks to all who came out on 3rd November for the litter pick. It's good to see our village neat and tidy for the holiday season. Thinking of making any resolutions for 2014? Please remember that the Environment Group organises regular litter picks throughout the year. You can find out dates and times by consulting the village notice boards.

The first houses have gone on sale at North Lodge Park, the new housing development by Bellway Homes Ltd. If they can stick to the current timetable, the village should be receiving its new sports fields and pavilion in 2015.

The NHS has a new non-emergency medical helpline: 111. This free-to-call service should be used if medical help or urgent advice is needed but it's not a life-threatening situation. Call 111 if:

- it's not a 999 emergency
- you think you need to go to A&E or another NHS urgent care service
- you don't think it can wait for an appointment with your GP
- you don't know who to call for medical help

Finally, I would like to call your attention to a leaflet which has come through your door about joining the parish council. We currently have three openings and are looking for residents who might be interested in becoming parish councillors. You can find out more by visiting the parish council website at [www.miltonvillage.org.uk](http://www.miltonvillage.org.uk) and clicking 'How to Become a Parish Councillor' under General Information. If you have just a couple of hours to spare each month, you can make a significant contribution to village life.

*Richard Summerfield, Chairman Milton Parish Council*

Below please find an updated list of your councillor contact details (for email addresses: please visit the website at [miltonvillage.org.uk](http://miltonvillage.org.uk) and click on 'Meet Your Parish Councillors'):

### Parish Councillors

Richard Summerfield <i>Chairman</i>	860715
Ian May <i>Vice Chairman</i>	521294
Anna Bradnam	862364
David Chamberlin	861511
Jane Coston (c/o Parish Office,	861447)
Rob Farrington	860160
Gary Heaney	690317
Jim Mowatt	861024
Michael Perkins	07769 665836
Ian Tyes	574394
Sue Humphreys <i>Clerk</i>	861447

### Parish & District Councillors

Mark Hersom	07852 997771
Hazel Smith	860752

### County Councillor

Maurice Leeke	441562
---------------	--------

## Assistant Parish Clerk Vacancy, Milton Parish Council

Starting Salary: between £8.43–£10.30 per hour dependent on experience (£16,215–£19,817 p.a. full time). Hours will normally be approx. 40 per month. These will be worked in accordance with the demands of the job and will include some evening work and may include weekend work.

The Parish Council of 15 councillors is friendly, dynamic and forward thinking. There is a Parish Council office in the village and the council has achieved Quality Status. We are looking for someone who is friendly and enjoys working with the public. The post holder will require a high level of IT competence, be organised, efficient and flexible.

Full details and an information pack are available from: Sue Humphreys, Parish Clerk, Parish Council Office, Coles Road, Milton, Cambridge. CB24 6BL. Tel: 01223 861447 or email: [clerk@miltonvillage.org.uk](mailto:clerk@miltonvillage.org.uk)

Closing date for applications: 28th February 2014

**Matthew Harney**

General Building Work  
Painting & Decorating

[matthew.harney@btinternet.com](mailto:matthew.harney@btinternet.com)  
Tel: 01223 696508  
Mob: 07962 398114

With us...it's personal

**MILTON VILLAGE TRAVEL AGENT**  
**MR ELI KARRAM**

IATA and ATOL Member

I can book any holiday you may have seen elsewhere  
Generally more choice and flexibility than available online  
No limit on booking size Business travel UK and abroad  
Everything financially protected, including flights only  
26 years experience No obligation quotations

**01223 864260 or 07963 841 679 any time**

[eli.karram@travelcounsellors.com](mailto:eli.karram@travelcounsellors.com)  
[www.travelcounsellors.co.uk/eli.karram](http://www.travelcounsellors.co.uk/eli.karram)

2013 awards: Sunday Times / HSBC International Track 200  
and Sunday Times Profit Track 100

**Omega Clean**  
*Cambridge*

Window Cleaning Service  
Cleaner for Longer!

**Tel: 01223 864335**  
**Mobile: 07734 711839**

Website: [www.omegaclean.co.uk](http://www.omegaclean.co.uk)



## Wildlife Notes

Do birds have some way of knowing accurately how long the days are? I have just noticed that since the Solstice, those in Milton and along the riverbank seem to have become much more voluble. I suppose the mild weather helps: maybe a cold snap will shut them up. But it is almost as if they know the days are getting longer and are making preparations for Spring.

During daylight hours, there are several song thrushes singing during the day along the riverbank as I cycle to work, and I've heard great spotted woodpeckers drumming a couple of times now. When I went for a walk in the Country Park at the weekend, there was a good background chatter of birds. One advantage of hearing birds in daylight at this time of year is that, with no leaves on the trees, you've more of a chance of being able to see what is singing.

However, it is either end of the day that I am finding most interesting. If you are anywhere near any thickets of trees, such as the north end of the Country Park, especially Tomkins Mead, nearing dusk, don't rush home because it's getting dark, but tarry a while and listen: you will be rewarded by the dusk chorus as the light fades. Wait for a robin or several to sing and for the blackbirds to start their territorial calls. The blue tits might join in too. You won't see any of them, but that makes it all the more mysterious and enjoyable, and one of nature's marvels.

I am also hearing the beginnings of the dawn chorus, in the hour before sunrise. The other day, there was a particularly loud and persistent song thrush, so I hope no-one was wanting a lie-in!

*Heather Coleman*

## Cycle Legacy: Small Grant Fund

One of the greatest sporting events on the planet will be racing along the roads of Cambridgeshire this summer.

On Monday 7 July, Cambridge will host the start of the 3rd stage of Le Tour De France 2014. The riders will set off by Parkers Piece, cycling through the historic city streets and then into the beautiful south Cambridgeshire countryside before heading down to London for the conclusion of the stage on The Mall.

In celebration of this exciting event, Cambridgeshire County Council announces the Cycle Legacy Small Grant Fund. Small grants are now available and will be awarded to local groups and organisations to support activities or events linked to and inspired by cycling or the race. We would like you to design and deliver activities within your community that involve and motivate people to create a lasting and positive legacy to mark this historic occasion for Cambridgeshire.

Each grant will be up to a maximum of £500 and additional funding or support in kind will be expected. The grants are being awarded in three rounds. The deadlines for applications for each round are 17 January, 7 March and 11 April.

For more details and how to apply for a Cycle Legacy Small Grant, call 01223 715479 or email:

[gary.hughes@cambridgeshire.gov.uk](mailto:gary.hughes@cambridgeshire.gov.uk)

*Gary Hughes, Lead Officer Growth*

Hi it's me again, Val. Just to say a HUGE THANK YOU to everyone for all the lovely retirement gifts, cards ,and good wishes I received when I left the post office.

I WAS TRULY TOUCHED. As for retirement: so far, so good!

*Val Nicholls*

## Mission News

Postage stamps for the Leprosy Mission makes for happy restored lives! 2013 was a record year - I was able to send stamp parcels every 2 - 3 weeks, and nationally TLM raised £122,610 from sales of stamps and collectables, and they have sent a personal thank you note to Milton for your contributions. In addition to postage stamps, collectables include postcards [used and unused], coins and old notes, cigarette cards and medals.

Mission to Europe - 'all year - shoeboxes' for children and for men and women. ME have just reported with grateful thanks that your latest contributions were included in the 2013 Christmas batch of 1502 shoeboxes [mostly unused items] which arrived safely at a church for distribution in an extremely poor area of Eastern Romania. Haberdashery items are always extremely appreciated.

Now we start the 2014 challenge! I can collect any contribution - large or small - or you can leave at my home, at Milton Post Office or at All Saints' Church.

Thank you,

*Paul Mutimer, 54b Fen Road, Milton, CB24 6AD.  
Tel:01223 440674.*

### HOWARD'S WAY School of Motoring

#### Manual & Automatic Cars

- Male and Female Driving Instructors
- Pass Plus Courses
- Intensive Courses
- Instructor Training
- Theory & Hazard Perception Confidence / Refresher
- Patient and Friendly
- Top Grade 6
- Motorway Courses

### HOWARD'S WAY WINDOWS

- Window Cleaning by Request
- Milton, Waterbeach, Landbeach
- Pubs, Clubs and Offices

T: 01223 440767 M: 07753 617310  
E: [hcradock@btinternet.com](mailto:hcradock@btinternet.com) [www.h2way.com](http://www.h2way.com)

### Lee Beamiss Carpentry & Building

Tel 01223 440001

Mobile 07815 118339

web site [www.leebeamiss.com](http://www.leebeamiss.com)

email [enquiries@leebeamiss.com](mailto:enquiries@leebeamiss.com)

All your re-upholstery needs  
"COVERED"

### S.PROCTOR UPHOLSTERY

Antique & Modern Domestic & Commercial Foam Cut To Size D.I.Y. Sales

Family Trade Since The 1940's

TEL: 01223 440430

Email: [sproctorupholstery@gmail.com](mailto:sproctorupholstery@gmail.com)

C2 BUTTON END IND EST, HARSTON, CAMBRIDGE, CB22 7GX

## Milton Badminton Player Represents England At World Senior Championships

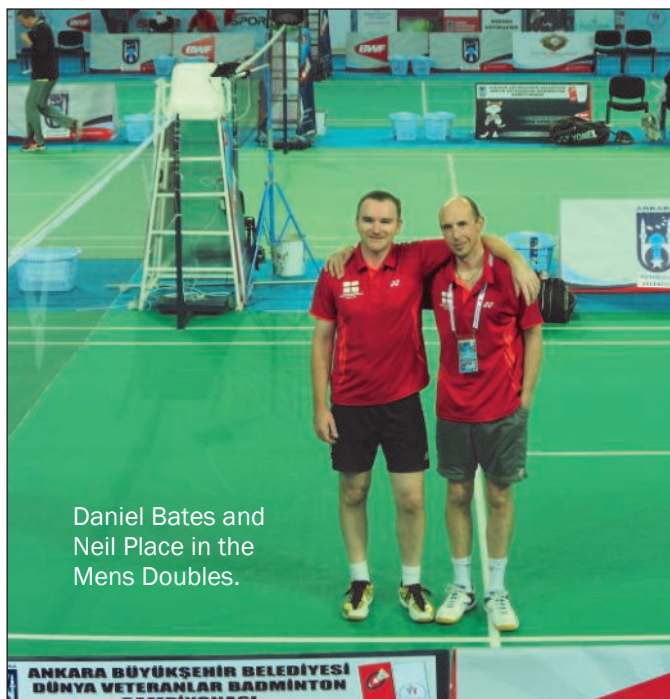
Cambridgeshire Badminton Association players Daniel Bates, Olga Bryant and Neil Place were the first Cambs players in recent history to represent England at the BWF World Senior Championships, which was held last year in Ankara, Turkey, on 9-14th September.

Milton resident Daniel and Neil had the benefit of a dream start. Following a bye in the first round, their feared clash against the 1st seed pairing in the 035 mens doubles ended in a walkover when one of the Japanese pair did not arrive. In the third round, they faced a strong Swiss pairing, but in a marvelous and explosive performance closed out the game in straight sets.

This led to a quarter-final match against a German pairing, which began poorly with an early 12-21 defeat. However, Neil and Daniel rallied themselves and in a nailbiting finish were pipped 20-22 in the second end.

Olga competed in all three disciplines of ladies doubles, singles and mixed doubles in the 040 category and she made good progress in all events, getting a bronze medal in the mixed doubles and losing to the eventual winners in the singles and ladies doubles.

Story: Cambridgeshire Badminton ([cambridgeshirebadminton.org](http://cambridgeshirebadminton.org))



Daniel Bates and Neil Place in the Mens Doubles.

### Milton Tennis Club Annual General Meeting

Wednesday 5th March 2014 7.30pm  
Milton Community Centre, Coles Road, Milton  
All welcome

Sue Griffin

### Milton Football Club

Saturday 22nd March 2014. 3.00 pm kick off  
Semi-Final of the William Cockell Memorial (League) Cup.  
Milton FC v Fenstanton FC

Please come along to The Sycamores Recreation Ground to support your local club in their biggest match of the season!

### The Flaming June Half Marathon

Registration is now open to apply for the Flaming June Half Marathon, a rural multi terrain half marathon across flowing Cambridgeshire countryside, starting at 10am on Sunday 1st June. The start and finish of the event is the Histon & Impington Recreation Ground.

There is a £20 entry fee with male/female age groups 17 upwards. Register online at [www.theflamingjunehalf.co.uk](http://www.theflamingjunehalf.co.uk) or call 01223 232514.



## Godden Auto Services Ltd

*Benet Garage, Cambridge Road, Milton, Cambridge CB24 6AW*

**Servicing and repairs to all makes of vehicles**

**MOT TESTS WHILE YOU WAIT**

Web site  
[www.goddenautoservices.co.uk](http://www.goddenautoservices.co.uk)

By appointment only

All major  
credit cards accepted

**Tel: 01223 420380**

**Opening times: Monday to Friday 8.30am - 5.30pm, Saturday 8.30am - 12.30pm**