



[www.milton.org.uk/mvv](http://www.milton.org.uk/mvv)

# Milton Village View

Issue No. 116 – Jan 2015

## In This Issue...

- Footgolf coming to Milton
- New clothing recycling bank
- Winter photos
- Easter Events

*And much more!*



*Photo: Stephanie Clarke*

# Contact Us

Send us your news and photos:

**vv@miltonvillage.org.uk**

1 Knights Way, Milton, CB24 6DE

Deadlines for articles are:

**12th January**

**12th March**

**12th May**

**1st September**

**1st November**

Issues will be published approx.  
2 weeks after the dates above.

## Online Archive

Find back copies of Village View  
(back to April 2011) on our website:

**milton.org.uk/mvv**

Printed by Langham Press Ltd.

**Delivered Free  
Circulation 2,000**

### Publisher's Notice

Whilst every effort is made to ensure accuracy the publisher accepts no responsibility for errors or omissions. Views and opinions expressed in the Village View are not necessarily those of the publisher or the editorial staff. The publisher does not accept any responsibility for claims made by advertisers.

**MSA** FILM NIGHT - FRIDAY 30 JANUARY 6PM  
DOORS OPEN AT 5.45PM

Disney  
**FROZEN**  
Sing-A-Long



PRE ORDERED TICKETS ADULTS £3, CHILDREN £2.50  
[ALL CHILDREN MUST BE ACCOMPANIED BY AN ADULT]  
TICKETS LEFT WILL BE SOLD ON THE DOOR FOR £3.50/£3  
DRINKS AND SNACKS WILL BE AVAILABLE FROM 50P  
WHY NOT COME AS YOUR FAVOURITE FROZEN CHARACTER?

## Village Litter Pick

There will be a Village Litter Pick on Sunday 22 February, starting from the Parish Office at 2pm. It's an opportunity to meet people from Milton. Litter picking sticks, adult-sized gloves and bags will be provided. Wear clothing suitable for the weather and stout shoes, boots or wellingtons.

*Anna Bradnam*



If you use our advertisers, please mention Village View. Thank you to our volunteer distributors.

## January

- Fri 30th** Sing-a-long 'Frozen' MSA Film Night, School, 6pm (p.2)  
**Sat 31st** 5th Anniversary **Parkrun**, Country Park, 9am (p.4)



## February

- Sun 15th** **Birdbox Making**, Country Park, 10.30am-3pm *Turn up any time between 10.30am & 3pm and build a wooden birdbox to put up in your garden. £7.50 per box.*  
**Sun 15th** **Messy Church**, All Saints', 3.30pm  
**Weds 18th** **Ash Wednesday** Holy Communion, All Saints', 8pm  
**Sat 21st** **All Saints Saturday Night Live**, details TBA, 7.30pm  
**Fri 27th** **MSA Quiz Night**, main school hall, 7 for 7.30pm (p.4)  
**Sun 22nd** **Village Litter Pick**, meet at 2pm at the Parish Office. (p.2)  
**Tues 24th** **First Lent Matters** Lunch, All Saints', 12 noon (See below)



## March

- Sat 7th** **MOBC Quiz Night**, Milton Community Centre, 6.30 for 7pm (p.5)  
**Sat 21st** **All Saints' Women's Day** (a day of worship, teaching and ministry in partnership with New Wine) – see [www.allsaintsmilton.org.uk](http://www.allsaintsmilton.org.uk)  
**Sun 29th** Morning worship for **Mothering Sunday**, All Saints', 10.30am

## April

- Thurs 2nd** **Maundy Thursday** Holy Communion, All Saints', 8pm  
**Fri 3rd** **Messy Easter**, All Saints', 10am  
**Fri 3rd** **Good Friday Hour at the Cross**, All Saints', 8pm  
**Sun 5th** **Easter Celebration** Holy Communion, All Saints', 10.30am



See pp.22-23 for more events at the pubs.  
 See [www.milton.org.uk/diary.html](http://www.milton.org.uk/diary.html) for more event details.  
 See [www.miltoncountrypark.org](http://www.miltoncountrypark.org) for more park event details.

## Lent Matters 2: My Faith, My Life

Please join us each Tuesday in Lent at 12 noon for prayer, a talk and a tasty lunch.

- 24 February:** Revd Dr Alex Hughes (Archdeacon of Cambridge)  
**3 March:** Susan Baker (Ely Mothers' Union Diocesan President)  
**10 March:** Revd Ruth Adams (Parish priest and Bishop's Advisor for Resilience in Conflict, Diocese of Ely)  
**17 March:** Kathy English (Reader at All Saints' Milton)  
**24 March:** John Baker (Methodist Lay Preacher)  
**31 March:** Revd David Chamberlin (Rector of Milton and Priest in charge of Waterbeach and Landbeach)

There is no charge for the meal but there will be an opportunity to contribute to the work of the MU.

## School Quiz Night

The Milton School Association organises a fun quiz night at the school every year. All funds raised will go towards the school to buy much-needed resources. Why not get a team together from your village group?

*Will the Women's Institute beat the Photography Club?*

*Are the toddler parents wittier than the baby group parents?*

*Are bowls players more switched on than the Pilates group?*

There is only one way to find out:



**MSA QUIZ NIGHT**

**BRING YOUR OWN FOOD AND DRINKS**

A FUN EVENING OF QUESTIONS & RAFFLE

MILTON PRIMARY SCHOOL  
FRIDAY 27 FEBRUARY  
7.30PM - DOORS OPEN 7PM

TICKETS £3.50 PER PERSON  
ENTER AS A TEAM ( MAX 6 )

Register your teams by emailing me on [msaquiz2013@gmail.com](mailto:msaquiz2013@gmail.com) (yes, 2013!) and pay on the night. N.B. This is an adult-only event and that the school premises are strictly non-smoking.

*Birgit Meldal, on behalf of the MSA*



**On 31<sup>st</sup> January 2015**  
**Cambridge parkrun is 5 years old**

Since that first event with 71 pioneers, we've now had 8,500 different people run almost as far as to the moon!

We will be celebrating our birthday in the usual way with a free, timed 5km run at 9am around Milton Country Park

Fancy dress is optional and cake is likely



**PAINTING  
DECORATING  
GLAZING**

Mobile  
07860 453533  
Phone:  
01223 700800  
(local resident)



**B.J.LEONARD**

*Stephanie's*  
**MILTON'S UNISEX HAIRDRESSERS**

Professional Hairstyling for Men and Women

**Telephone: 01223 420526**

*Discount for all new clients*

49 Cambridge Road, Milton, Cambridge, CB24 6AW

## Saturday Night Live at All Saints'



In November All Saints' Church was once again turned into a night club and welcomed a group of our favourite talented musicians, this time as The Midas Collective (previously as Rich Clifford and The Silhouettes): [www.midascollective.weebly.com](http://www.midascollective.weebly.com).

We were entertained and enthralled with over 20 classics of jazz, blues and rock & roll, from *The Girl from Ipanema* through *Paper Moon* to *Johnny B Goode*.

The real highlights of the evening, giving really outstanding performances, were 17-year-old Anastasia Barnes, whose singing and phrasing was reminiscent of Ella Fitzgerald and Sarah Vaughan, and the outstanding saxophone playing of 16-year-old Josh Reeder. Make a note of these two names: we are sure you will hear of them in the future.

Over £200 was raised for Ekisa Ministries and Great Ormond Street Hospital.

The next Saturday Night Live is on 21st February with acoustic guitarist and folk singer Steve Logan.

Barry Brown

# March *Fit*

**07 March** - Wimpole Night Run (6K)

**08 March** - Cambridge Half Marathon

**14 March** - Parkrun (5K)

**15 March** - Junior Parkrun (2K)



**JustGiving™**

**to Raise £8,500 for the Milton School Solar Refit**

**We need your Help! [MiltonSchoolAssociation.wordpress.com](http://MiltonSchoolAssociation.wordpress.com)**

## Milton Outdoor Bowls Club Quiz Night

6.30pm for a 7pm start on Saturday 7th March 2015 in Milton Community Centre

You are invited to enter a team, of not more than 8 and no less than 6 persons. The cost is £8 per person, which includes:

- ◆ Eight rounds of quiz
- ◆ A fish & chip supper in the interval
- ◆ Prizes for the winning team

Each team please provide one raffle prize and bring your own drinks/nibbles. If you wish to enter a team, please contact Bob Waters by no later than Monday 23rd February at 3 Lyndhurst Close or telephone 01223 860620 or email [robert.waters1@ntlworld.com](mailto:robert.waters1@ntlworld.com).

## Events



### Create for Christmas

Nearly 80 people came to Create for Christmas in December, to cut, stick, thread, weave, stuff, sew, stamp, arrange flowers, sip mulled wine and munch mince pies. A lovely way to start the festive season!



### Three Wise Men visit Milton

The 'three wise men' were spotted at the toddler group Christmas party this year, helping David Chamberlin to hand out the presents.

*Mary-Ann Johnson*



### Milton Summer Fayre 2015

Early call to Milton clubs and charities

Preparations are well underway for this year's Milton Summer Fayre on Saturday 11th July 2015 and an awesome event is already being planned!

Booking forms will be available in the next MVV edition but we're asking Milton clubs and charities to get in touch now at:

[www.miltonfayre.uk/contact](http://www.miltonfayre.uk/contact)

so we can promote you in the Fayre.

Please all continue to 'like' us to show your support and keep-up with the news at:

[www.miltonfayre.uk/like](http://www.miltonfayre.uk/like)

*Milton Fayre Committee*



#### HEATING & PLUMBING SERVICES LTD

- GAS SAFE REGISTERED
- Boiler Installation - Gas & Oil
- Complete Bathroom Design and Installation
- Landlords Certificates
- Power Flush
- Tiling
- Under Floor Heating
- Gas Boiler Servicing
- Free Estimates

*\* Covering Cambridge for 30 years \**



Ph: 01223 242544

Email: [malcolm.potts@btconnect.com](mailto:malcolm.potts@btconnect.com)  
Unit 8, Ronald Ralph Court, Wadlows Road,  
Cambridge, CB5 8PX



2163

### J.P.Morley Roofing

Est. 1985



### All types of roofing Flat roof specialist

1 Old School Lane, Milton

Home: 01223 863259

Mobile: 07941 198771

[josephmorley@btinternet.com](mailto:josephmorley@btinternet.com)

## New Clothing Bank

A new charity clothing recycling bank has been installed just inside the gates of Milton Primary School. This is available for anyone to use whenever the Humphries Way gate is open. The profits from items collected in this bank will be split between the Salvation Army and Milton primary school.

Clothes, household linens, bags, belts, shoes, boots, towels, sheets, blankets and duvet covers can all be donated, but please do not leave duvets themselves or pillows or cushions.

The GREAT thing is that even ripped and stained items fit only for recycling can be donated as well as items for resale and reuse. Everything needs to be clean and dry and in a closed plastic bag.

So please do make use of the new clothing bank whenever you have a clear out, and support both your village school and the Salvation Army's work with people in need.

*Many thanks, A Turner*



## Fun with Carols

Great fun was had at the various carol-singing events round the village at the end of last year.

All the pubs were visited — some more than once! There was singing at Tesco, together with the fantastic Waterbeach Brass Band, and carols at the farm college on Christmas Eve, which even the pigs enjoyed in their own way (!).

A group went carol singing round North Lodge Park, and was told by one resident with a beaming smile that “nothing like this has happened to me before!”. Ellie, age 3, stole the show at the Lunch Club carols with her rendition of ‘Away in a Manger’. And not forgetting the packed church we had for the ‘Carols by Candlelight’ service!

Thanks to all who joined us, and see you next Christmas!

*Mary-Ann Johnson*



**MILTON**gasservices  
your local gas specialist

161938



- Servicing, Installation and Repairs
- Gas Boilers, Fires, Cookers and Central Heating Systems
- Powerflush Cleansing of Central Heating Systems
- Energy Efficiency upgrades
- Landlord Gas Safety Checks and Certificates

**Contact - Eddie Kikas**  
Your Local Gas Specialist

**Tel/Fax: 01223 861810 Mobile: 07831 228181**

Email: [miltongas@btinternet.com](mailto:miltongas@btinternet.com)  
[www.miltongas.co.uk](http://www.miltongas.co.uk)



### Pilates Classes Milton & Landbeach

Mon 9.30am - Mixed Ability Mat Class (MCC)  
Mon 10.30am - Mixed Ability Mat Class (MCC)  
Tues 6.20pm - Intermediate Mat Class (Sch)  
Tues 8.15pm - Mixed Ability Mat Class (Sch)  
Fri 10.30am - Mixed Ability Mat Class (LVH)

Contact Liz on 07768 155278  
or [liz.dolman@lovepilates.co.uk](mailto:liz.dolman@lovepilates.co.uk)  
NVQ level 3 Pilates & PureStretch Instructor  
For further info, visit [www.lovepilates.co.uk](http://www.lovepilates.co.uk)

## New Year's Eve Family Disco & Party Games

A “fantastic atmosphere” and a “great children's event” was the consensus of everyone on New Year's Eve at Milton Community Centre.

Children loved the Children's Bar - the candy floss was a hot favourite - and adults loved the £100 Card Bingo cash prizes! (thank you World of Computers and Tesco for these donations). The organised party games and disco went down a storm and congratulations to Chloe Kranz, winner of the karaoke and releaser of the torrent of balloons at midnight!



Thanks to everyone who supported this unique and memorable event organised by Milton Fayre volunteers - only made possible by the support of Milton Community Centre. We'd love to hear your feedback - whether you attended or not - to help us improve future events. Short feedback form here:

[www.miltonfayre.uk/newyear/feedback](http://www.miltonfayre.uk/newyear/feedback)

*Milton Fayre Committee*

## Protection for Pubs

Milton has recently gone from four pubs to three, with the Waggon and Horses being converted to a restaurant. Under current planning legislation, a pub can be lawfully converted to other business premises (e.g. offices or a shop) without any further planning permission.

Directions”, a planning power which could mean a pub would need a planning application in order to be converted or demolished.

To have your say, visit:

[www.scambs.gov.uk/content/consultation-greater-protection-public-houses](http://www.scambs.gov.uk/content/consultation-greater-protection-public-houses)

However, SCDC is running a **consultation until the 23rd February** over “Article 4

*Paul Oldham*

## Harmony

### Hair and Beauty Salon

Expert hair stylists for Men, Women and Children.

Beauty therapists offering a wide range of treatments.

Chiropody (HCPC Registered). Sports therapy and massage (See website for more details)

Gift vouchers available

6 High Street, Milton, Cambridge, CB24 6AJ

[www.harmonysalon.co.uk](http://www.harmonysalon.co.uk)

Call **01223 863636** to book an appointment

Open 9 - Late Mon – Fri

9 - 2pm Sat



## Community Oil Buying Scheme

Here in Milton most houses are heated by gas, as we had mains gas laid here in the sixties, but some older houses are heated by other means, often heating oil, and owners of those can benefit from joining Cambridgeshire ACRE's Community Oil Buying Scheme. Their bulk-buying scheme for domestic heating oil aims to bring communities together to make the most of joint buying power so that greater savings can be made and passed on to customers.

Anyone can join the Scheme; domestic users, community groups such as village halls or even businesses. All members pay a small annual membership fee but this is more than offset by the savings made on oil orders. The average saving is usual around 2p/litre off online prices. For more details visit:

[www.cambsacre.org.uk/community-oil-buying-scheme.php](http://www.cambsacre.org.uk/community-oil-buying-scheme.php)

*Paul Oldham*

## One Mountain...Three Worthy Causes



On the 5<sup>th</sup> February, Gary O'Shea (Butt Ln) and Howard Scarborough (Coulson Cl) will be flying off to Tanzania to climb Mt Kilimanjaro (19,340ft) over 8 days. As well as having a bit of an adventure and some fun, they will be using the trip to raise money for three worthy

causes: Royal Engineers Bomb Disposal Association, Macmillan Cancer Trust and Ekisa Ministries. They are looking to raise around £6,000, split equally between these three causes.

So if you would like to make a donation or read a little more about this trip, visit:

[fundrazr.com/campaigns/4rV17](http://fundrazr.com/campaigns/4rV17)

Cheque or cash donations in an envelope marked "Kilimanjaro Fund Raiser" can be dropped off at All Saints' Church Office.

*Gary O'Shea*



**Dance Fitness Class**

**Zumba Classes in Milton 2014**  
**Licensed Zumba Instructor Liz Dolman**

Milton Primary School  
Tuesday Nights 7.15pm  
All Abilities Welcome  
Weekly £6 or 5 Session Card Available

For further information  
contact Liz on 07768 155278  
or [liz.dolman@love2zumba.biz](mailto:liz.dolman@love2zumba.biz)  
Visit [www.lovepilates.co.uk/zumba](http://www.lovepilates.co.uk/zumba)

## AMBASSADOR LODGE BED & BREAKFAST

37 High Street, Milton, CB24 6DF  
(next to the Waggon & Horses pub)

Friendly, family-run B&B

Contact: Phil or Fizz Turner  
Tel: 01223 860168

[www.ambassadorlodge.co.uk](http://www.ambassadorlodge.co.uk)  
e-mail: [ambassadorlodge@yahoo.co.uk](mailto:ambassadorlodge@yahoo.co.uk)



## Footgolf coming to Milton

The UK Footgolf Association has decided to base their East of England headquarters at the 9-hole Milton Park golf course on Ely Road at the north end of the village which went into liquidation last summer. The course itself will become an 18 hole footgolf course.

Footgolf is essentially like golf - only, rather than using a golf ball and clubs, players use a football and kick it into a cup in as few shots as possible. The new headquarters - which will include fully serviced offices, bar and catering facilities, function rooms, conference facilities and a footgolf merchandise shop - will have its grand opening on Saturday, 28th February and will then be open to the public seven days a week.

*Paul Oldham*

## Fire & Rescue Service Recruitment

THINK the fire service is all about putting out fires and rescuing people from road crashes? Think again.

At Cambridgeshire Fire and Rescue Service, the men and women on our frontline deliver important fire safety advice to dozens of different communities. From visiting schools to care homes, mother and toddler groups to community fetes, our firefighters play an integral role in keeping YOUR community safe.

And we'd like you to think about joining us.

The role of a firefighter is varied and exciting but most importantly, it can make a real different to people's lives. It is a profession that provides development from the start, with opportunities to grow into management or specialist roles for those who want to.



The next recruitment process for wholtime firefighters opens in February. To find out more, log on to [www.cambsfire.gov.uk](http://www.cambsfire.gov.uk). Find us on Twitter, Facebook and Instagram.



*For all your Concrete  
And Wooden Garden Products*

Paving, Edging, Ornaments, Bird Feeders, Planters, Trellis, Nest Boxes, Pot Hangers, Picnic Benches and much more

**A limited range of Pot Plants  
for your Garden, Planters, and Pot Hangers**

**Tel: 01223 420669**

[www.phoenixtrust.org](http://www.phoenixtrust.org) Unit 8, Milton Trading Estate

*Supported work experience for people with learning difficulties*

## SILVER SERVICE TAXI

*Licensed Taxi Service,  
Reliable, Local & Friendly*

**Ian May**

**07989 197816**

Email: [silverservicetaxi@gmail.com](mailto:silverservicetaxi@gmail.com)

**Multi-Seater 1 to 8 passengers  
Airport & Group Bookings welcome  
Specials Needs & A Speciality**

[www.silverservicetaxi.co.uk](http://www.silverservicetaxi.co.uk)



## East Anglia's Children's Hospices (EACH) Update

### Milton Carol Service

Our annual Milton Christmas Carol service took place on 18<sup>th</sup> December and was a truly magical evening. Milton Road Primary School graced the stage with their beautiful renditions of some carol classics. Readings were also enjoyed from EACH families, an EACH volunteer, Reverend David Chamberlin and BBC Radio Cambridgeshire's Jeremy Sallis. The church was also visited by Milton Pets as Therapy (PAT) dog Deogie, who dressed as a reindeer for the occasion. We raised just under £500 on the night, so many thanks to everyone involved for their support.



### Cambridge Santa Run

The eighth Cambridge Santa Run was as festive as always with around 300 Santas surprising Sunday shoppers. Families and friends got into the Christmas spirit with some fantastic costumes. The event started at The Grafton with Waterbeach Jazzercise warming everyone up and ended with medals being handed out by The Mayor of Cambridge, Councillor Gerri Bird. Runners were cheered on by enthusiastic marshals and even got the chance to listen to performer Geoff Ash, putting on a charity musical performance at the finish line.



THANK YOU to all the many volunteers that gave their time so generously to ensure another successful day.

### Upcoming Events:

**Saturday 18<sup>th</sup> April** – EACH Peterborough Abseil contact Beccy Gillings at EACH Fundraising Office on 01223 204916 for more information.

## C H LUMB

(BUILDERS)

DRAINAGE - GUTTERING  
UPVC FACIAS & SOFFITS  
PATIOS & FENCING  
ALTERATIONS

01223 354402

Mobile 07762026290

## Amethyst Caravan Holidays

Static Caravans available to  
rent at Manor Park  
Hunstanton

Tel: 07795 087907

Email:

[amethystcaravans@hotmail.com](mailto:amethystcaravans@hotmail.com)

## From the Archives

10 Years Ago: Jan 2005

### Plastics Again !!



Due to the huge demand for plastics disposal at Tesco, as reported in the last two issues of Milton Village View a bigger RORO, (roll off-roll on) container is in place now. The Parish Council had raised the problem with SCDC who reacted quickly to solve it. It is emptied twice a week at the moment. *Please remember to crush your bottles whenever possible to maximise the amount of space available.*

## Unwell? Choose Well



Your **pharmacist**, **GP** or **NHS 111** can help you get treatment quickly

**A&E is for life threatening emergencies only**

<p>For illnesses like coughs and colds - see your pharmacist</p>	<p>For illnesses like headaches, sore throats and stomach aches - Self-care</p>	<p>For illnesses that won't go away - see your GP</p>	<p>unsure where to go or need advice? - call 111</p>
--	---	---	--

Help your NHS save lives

[www.choosewellcambs.nhs.uk](http://www.choosewellcambs.nhs.uk)



### 25 Years Ago: Jan 1990

#### 4 White Horses Outside the White Horse

Victorian villagers welcoming the arrival of the Mail Coach for their Christmas fayre.

### Need glasses?

Save money, buy direct from ALL EYES Specs

Complete specs from only £9.00!\*

- Repairs & emergency specs\*
- Reglaze your own specs\*
- Complete sunspecs from £49.00\*
- Specs for all sports
- Excellent customer service



\*T & C's apply.

Just bring your new prescription to:

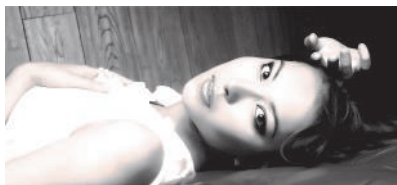
ALL EYES Specs Makers  
20 Norman Way Ind. Park  
Over, Cambridge CB24 5QE

Tel: 01954 231545; 07824 706969

Mon - Fri; 9am to 5pm

(PLEASE RING FOR AN APPOINTMENT)

[www.all-eyes.co.uk](http://www.all-eyes.co.uk)



## Reporting Missed Bin Collections Online

If South Cambridgeshire District Council fail to collect your bin, which can happen sometimes as most villagers who've lived in Milton for a while will know, then they now have a new way of reporting this online using a form on their web site:

[www.scambs.gov.uk/content/report-your-missed-bin-online](http://www.scambs.gov.uk/content/report-your-missed-bin-online)

It also offers advice of how to ensure your bin is collected (they now collect from 6am to 6pm so your bins really need to go out the night before).

*Paul Oldham*

---

## Consultation on New Station Area Plans

Local residents, organisations and businesses are being asked for their views on how the final major piece of brownfield land available in Cambridge could be regenerated.

The “Cambridge Northern Fringe East” area is just the other side of the A14 from Milton, between Milton Road and the railway line, and includes the new railway station.

A series of public exhibitions about the redevelopment have been held on the plans, and the exhibitions boards are available online, via:

[www.cambridge.gov.uk/cnfe](http://www.cambridge.gov.uk/cnfe)

You can also comment on the redevelopment project online via this web page until 2nd February at 5pm. Among the options up for discussion are the extent of redevelopment, the mix of industrial and residential zoning and the name of both the new railway station and this part of Cambridge as a whole.

The comments from the issues and option consultation will then help shape an Area Action Plan, which will be consulted on by both councils next autumn.

*Mary-Ann Johnson*



---

## Practise speaking English!

ESOL Café – Beginners to Intermediate  
(Monday/Friday 9.30am)

Just Talk! – Advanced discussion group  
(Monday/Friday 11.15am)

Spoken English for Work –Exam group  
(Friday 1-2pm)

Chesterton Community College, Cambridge

Contact Sarah Adams

[sadams@chesterton.cambs.sch.uk](mailto:sadams@chesterton.cambs.sch.uk)



Neil Hobbs



Sally Milligan



Beth Oldham



David May



Stephanie Clarke



'Frozen Reflections', Caroline Dod

## Milton MU News

At our Christmas party in December we collected presents of toiletries to give to the residents of Whitworth House in Chesterton, which provides accommodation and support for single young women in need.

On 3rd February at 7.30pm the film *The Vow* will be shown in the church hall. There is no charge for admission. Refreshments will be served and there will be a retiring plate collection for the Mothers' Union. Lent sees the commencement of Lent Matters 2. Everyone is invited to join us at noon in the church hall for prayer, a talk and tasty lunch. On 1st April at 7.30pm we reflect upon the events of Holy Week by looking at the second part of the BBC film, *The Passion*.



*Christmas Gifts for Whitworth House from Milton M.U.*

*Jacqueline Metcalfe*

## Messy Christmas

On the Saturday before Christmas, 100 children and adults took 2 hours out of their busy schedules to spend time together exploring the story of the birth of Jesus. As the name suggests this was not a time of sedate reflection but a joy-filled opportunity for craft, story, prayer, fun, laughter, eating, chatting and friendship; following the usual Messy pattern of craft time, then an altogether slot and finishing with food.

The next Messy Church 'God's Promise' will be on Sunday 15th February 3.30-5.30pm. All welcome.



*Christian Osborne*

## Milton RAF Association Standard comes home

Following a random conversation at the All Saints' Lunch Club in November last, and some careful detective work, Nobby Clark of Fen Road - a World War 2 RAF Veteran - and I went over to Oakington ATC on 9th December to collect the Milton RAFA Standard. There hasn't been a RAFA branch in Milton for a few years now, but it was felt that it would be good to have the Standard back in the village, and have it available to display at Remembrance season in All Saints' Church. The Standard will be formally 'laid up' at a ceremony later this year. *David Chamberlin, Rector*



*Nobby Clark receiving the Milton RAFA Standard*

## Dennis Cousins, 1937-2014



Initially raised in Coton on a smallholding, Den was brought up on a life of farm animals, gardening (which he hated) and country pursuits. His father would take him shooting and he maintained a keen and active interest in this throughout his life.

After leaving Impington Village College at the age of 15 he joined local building firm Brignalls as an apprentice joiner. This would become his lifelong career and many examples of his workmanship can be found both locally and around Cambridge and the colleges. He would always take great exception if anyone called him a carpenter; he was 'a joiner!' Many friends were made locally as he worked around the village during his later working life.

After his marriage to Deanna in 1963 he set up home in Milton. In 1971 they had a son, Darren, who would eventually play first class cricket for Essex and Northamptonshire. Cricket was always Dennis's first love and he will probably be best remembered by many for his exploits with the ball for both Cambridge Granta and Cambridgeshire. He was awarded his county cap in 1973 and was always so proud to wear the county crest on his blazer.

Sadly, Deanna passed away in 1984 after a long illness but her two sisters, Tina and Linda, who also live in the village, were always there for support.

In 1995 Den met Ros and this heralded a new phase in his life. They were married in 2001 and enjoyed many happy years together before he was sadly diagnosed with cancer in 2009. Always a fighter, Den was known as 'The Old War Horse' by his consultant. A 'gentle giant' who always commanded respect both on and off the sports field, Den finally lost his fight on December 15th 2014. He will be sadly missed.

*Paul Capitain*

### AFFORDABLE STORAGE

- ✓ SECURE STORAGE
- ✓ FLEXIBLE HIRE PERIODS
- ✓ COMMERCIAL & DOMESTIC
- ✓ RANGE OF SIZES AVAILABLE
- ✓ OFFICE & RETAIL
- ✓ 24 HOUR ACCESS
- ✓ EXCELLENT STORAGE
- ✓ CCTV MONITORED
- ✓ PICK-UP / DELIVERY SERVICE

**01223 420440 / 07711 084164**

email: [mwheeler.bromley@btopenworld.com](mailto:mwheeler.bromley@btopenworld.com)

UNIT 105, NORMAN INDUSTRIAL ESTATE, MILTON, CAMBRIDGE, CB24 6AT

## R.B. Electrical LTD

### N.I.C. Registered

**Your Milton Domestic  
& Industrial Specialists**  
**25 Yrs Experience**

**Tel. 365200**

## From the Desk of the Parish Council Chairperson

I would like to wish everyone in the village a happy and healthy New Year. Special thanks to Milton resident Dave Collins and Parish Councillor Rob Farrington for putting up our **Christmas lights** again this year and contributing to the festive mood in the village.

Parish Councillor **Ian May is standing down** after nearly 25 years of service on the council. Ian has served as vice-chairman for many years, as well as chairman of the Community Care Committee. He has been on the Land Group and liaised with the FA concerning the new sports pitches and pavilion at North Lodge Park. We thank Ian for all his hard work on behalf of the village and wish him and his family all the best. Ian's departure leaves **two vacant seats** on the parish council. I urge you to volunteer as a way to contribute to village life and have a say on important parish issues. Why not come along to the next meeting (in the Bowls Pavilion on the first Monday of each month except August) to see your council in action and find out about becoming a parish councillor. I would like to welcome our **new Assistant Clerk**, Susan Wilkin. Susan lives in Waterbeach and has relatives in Milton. We look forward to working with her and wish her success in her new role.

We have received a number of complaints **about dangerous parking** on The Rowans. Your council has contacted the Highways Dept and asked that an engineer be sent out to offer practical solutions, such as the installation of double yellow lines on dangerous corners.

I would like to thank Milton resident and World War II veteran Ron Driver for his participation in the **Armistice Day ceremony**. It was good to see so many children from the school who had made their own poppies. Crosses were also laid on the previous Sunday by Explorer Scouts.



You may have noticed **tree maintenance** work around the village. I would like to thank former councillors Roger Day and Bob Waters for sorting out this important annual work. Finally, I would like to thank our two district councillors, Anna Bradnam and Hazel Smith, for their work to clean up the verges on the southern approach to Milton. Please consider joining them for the next village **litter pick** (see p.2).

*Jane Coston, Chairperson, Milton Parish Council*

### PHYSIOTHERAPY

Treatment for sports injuries, back and neck pain, joint problems etc.

**Liz Cradock** MCSP, MICT  
Chartered Physiotherapist and  
Reflexologist, HPC registered

*Recognised by major medical insurance companies*

Treatments at:

'Wellbeing at 17', 17 High Street,  
Waterbeach CB25 9JU

**Tel: 01223 860928 Mob: 07714 052389**

**Email: liz.cradock.physio@gmail.com**

### STRIKE FIT

Fridays 1pm-2pm

Milton Community Centre

also available

**1 to 1 personal training**

Contact : Alex Campbell

Tel. 01223 862184 or 07746  
122749

Email alex@alexercise.co.uk

www.alexercise.co.uk

## Councillor Directory

Below please find an updated list of your councillor contact details (for email addresses, please visit the website at [miltonvillage.org.uk](http://miltonvillage.org.uk) and click on 'Meet Your Parish Councillors'):

### Parish Councillors

Jane Coston *Chairperson*

	861447*
David Chamberlin	861511
Adam Dark	07403 162266
Rob Farrington	860160
Gary Heaney	690317
Mark Hersom	07852 997771
Jim Mowatt	861024
Michael Perkins	07769 665836
David Stirrups	861447*
Richard Summerfield	860715
Ian Tyes	574394
Gemma Faulkner <i>Clerk</i>	861447*

\* - Parish Office

### Parish & District Councillors

Anna Bradnam	862364
Hazel Smith	860752

### County Councillor

Maurice Leeke	441562
---------------	--------

## Blood Donation Session

The next regular blood donation session is at the Community Centre on February 20th. Sessions are 1-3.15pm and 4.30-7pm. You can now book an appointment rather than simply turning up and waiting your turn. Visit [www.blood.co.uk](http://www.blood.co.uk) for details.

## Community Orchard

With last month's grant application approved we're starting to put plans in place for the community orchard at Milton Country Park.

Fencing should be taking place over February – if any of you have experience in fencing it would be great to hear from you (likewise if you know of someone who could help with machinery). Ten new heritage apple trees have been ordered ready for planting in March (date to be finalised).

We are also hosting a pruning skills workshop on March 22nd 10am-1pm with experienced tree expert Bob Lever ([www.orchardbob.co.uk](http://www.orchardbob.co.uk)) - this will be a great opportunity to get the trees we have in better shape and learn how to look after the new trees. Places are £10 with no experience necessary and all tools provided. Please email [orchard@miltoncountrypark.org](mailto:orchard@miltoncountrypark.org) if you'd like to reserve a place; it is already proving popular!

Sarah Harris

1863  
de  
Philibert Roustin

@milton post office

coffee  
*postino*

Legafredo  
ESPRESSO

The Post Office, 2 Coles Road, Milton, Cambridge, CB24 6BW

[postinocoffee.com](http://postinocoffee.com)

## Local Interest

# Milton WI

Marie Fella and her wonderful assistants took over for the evening in November. This was a fun and interesting meeting when we also welcomed Chris Clarke a theatrical make-up artist. She told us tales of the stars she had made up and also demonstrated on some of our members. It is amazing what illusions can be created with some make-up and wigs.

We had two Christmas celebrations this year; our lunch was at Il Piccolo Mondo in Bottisham where over 40 members enjoyed delicious Italian food, and at our Christmas Party in Milton, we had fun, food and frolics organised by our Committee with magic and games provided by JezO a leading entertainer and magician. One of our members lived to tell the tale of almost having her head chopped off!

We have a full programme this year; in January we will be welcoming Marian French who will be enlightening us on the Social History of Cambridge and Peter Jackson from Scotsdales Nursery will be speaking to us in February. March will be with Holli McNish a young and very talented poet. During the coming months we will also be squeezing in walks, lunches, darts, the WI Centenary celebrations and much more.

New WI members are always welcome, and anyone can come along for a taster before deciding whether to join. Contact our President Gill Offley (01223 293231) or Secretary Bridget Crow (01223 441755) for further details, or just come along. Meetings are on the third Tuesday of each month.



Anne Newman

### Swedish Massage



Contact Alex Campbell on 01223 862184  
or 07746 122749  
email: alex@alexercise.co.uk

Benefits include\*:

- Relief from Stress, Anxiety and Tension
- Feelings of Deep Relaxation
- Improved Mood
- Improved Sleep
- A general sense of Wellbeing

Appointments available in Milton & Chesterton  
Sports Centre, Gilbert Road, Cambridge

\* Massage should not be used in place of conventional medical care. Always consult a GP or other Health professional for medical attention and advice.

## Matthew Harney

General Building Work  
Painting & Decorating

matthew.harney@btinternet.com

Tel: 01223 696508

Mob: 07962 398114



## Milton Country Park Update

The park had some amazing visitors over 2014 with everything from Wookies to Spartans to Zombies wandering the paths!! It supported many charities by offering itself up as a place to come and do that 5 or 10K you promised yourself you would do and it continues to welcome many community groups.

Seeing so many families enjoying the Eid celebration in the play area was wonderful and we are particularly pleased to see the number of children now turning up on a Sunday morning to run the Junior Parkrun that was introduced in 2014. Special mention to Tracey Hutchison for the tireless efforts and passion that drove that forward. Regular paddleboarding sessions and the Open Water Swim sessions were all very successful in 2014 and will be repeated in 2015. Our Autumn Festival was a wonderful day focussing on the values of local quality products. We expect to be in a position to publish a draft list of events for the coming year by early March.

Practical work in the Park is year round and despite the cold we press on with our delivery of the New to Work and City & Guilds Level 1 in Land Based Operations. This is a great partnership between ourselves and Cambridge Regional College that continues to support young adults in the transition between Education and the workplace, gaining life skills and hands on practical experience of working outdoors.

So much to be positive about but there is always more to do as we work hard to ensure the park is maintained and serviced. With no regular direct funding the park is always juggling the needs of its users against the need to be financially stable. At this time of year it is particularly difficult as one of the main income sources, the carpark, is less busy than in the warmer months. The success of the park is reliant on the community to thrive and actively support the benefits that the park delivers. If you are a regular park user who enjoys the freedom of access to this wonderful space on your doorstep do please consider making a contribution to the ongoing costs, either via the JustGiving page at [www.justgiving.com/CambridgeSportLakesTrust](http://www.justgiving.com/CambridgeSportLakesTrust) or directly through the Ranger Office.

*Lorraine Whybrow*



*With us...it's personal*

### MILTON VILLAGE TRAVEL AGENT MR ELI KARRAM

IATA and ATOL Member

I can book any holiday you may have seen elsewhere  
Generally more choice and flexibility than available online  
No limit on booking size Business travel UK and abroad  
Everything financially protected, including flights only  
27 years experience No obligation quotations

**01223 855290 or 07963 841 679 any time**

[eli.karram@travelcounsellors.com](mailto:eli.karram@travelcounsellors.com)  
[www.travelcounsellors.co.uk/eli.karram](http://www.travelcounsellors.co.uk/eli.karram)

2014 awards: Queen's Award for Enterprise

## Sports Therapy Services

Sports Massage and Injury Rehabilitation



Don't put up  
with the pain

SAVE 25% on your  
first appointment

Additional offers available

call Lesley on **07940 110309**  
or visit

[www.sportstherapyservices.co.uk](http://www.sportstherapyservices.co.uk)

# Around the Pubs White Horse

Tel: 01223 860327

Happy New Year!

We are looking forward in seeing you all in 2015.

Please keep an eye out for special and new events on our blackboards outside or log in to The White Horse Milton Facebook.

*Alan, Ava, Adam, Kimberley, Shaun, Charlie, Jono, Daro, Julian and Lynda.*

## HOWARD'S WAY School of Motoring

### Manual & Automatic Cars

- Male and Female Driving Instructors
- Pass Plus Courses
- Intensive Courses
- Instructor Training
- Theory & Hazard Perception Confidence / Refresher
- Patient and Friendly
- Top Grade 6
- Motorway Courses

## HOWARD'S WAY WINDOWS

- Window Cleaning by Request
- Milton, Waterbeach, Landbeach
- Pubs, Clubs and Offices

T: 01223 440767 M: 07753 617310  
E: hcradock@btinternet.com www.h2way.com

## Lee Beamiss Carpentry & Building

Tel 01223 440001

Mobile 07815 118339

web site [www.leebeamiss.com](http://www.leebeamiss.com)

email [enquiries@leebeamiss.com](mailto:enquiries@leebeamiss.com)

All your re-upholstery needs  
"COVERED"

## S.PROCTOR UPHOLSTERY

Antique & Modern  
Domestic & Commercial

Foam Cut To Size  
D.I.Y. Sales

Family Trade Since The 1940's

**TEL: 01223 440430**

Email: [sproctorupholstery@gmail.com](mailto:sproctorupholstery@gmail.com)

C2 BUTTON END IND EST, HARSTON, CAMBRIDGE, CB22 7GX

## MILTON ANTIQUES AND COLLECTABLES

Offering a wide range of items  
Clocks, China, Glass,  
Brass, Copper, Silver plated articles  
Costume jewellery, small pieces of furniture  
Musical instruments and much, much, more

363 The Rowans Milton Cambridge

Tel No. 01223 860061

Mob: 07771620752

We also purchase good quality items.

## Lion & Lamb

Tel: 01223 860202

Look out for our New Year Voucher which will save you up to £10 on meals: see our website for full details, as well as our Monday to Thursday meal offers!

The outside play area remains open – the children can enjoy the fresh air while you enjoy a lovely hot drink and the real log fire!

### Forthcoming events

PSYCHIC SUPPER: 28th January and 25th February.

SOUL NIGHT: 30th January!

LADIES DINNER CLUB: 3rd February: "Barbados!" with Claire Dudley. 3rd March: "Paint it Purple, celebrating International Women's Day" with Val Ross. 7th April (TBC). 5th May: "Cocktail Making" with Lawrence.

VALENTINE'S DAY: 4 course menu with wine and Champagne - £65 per couple.

Live music from DALE TAYLOR on 13th March from 9pm.

MOTHERS DAY: 15th March, 2 courses £14.45, 3 courses £17.95.

4th Annual BEER & CIDER FESTIVAL with live music, disco, BBQ & Hog Roast, 21st-25th May

Full details and how to book our events can be found at on our website. We look forward to welcoming you.

Lawrence & Sally [www.lion-lamb.co.uk](http://www.lion-lamb.co.uk)

## Jolly Brewers

Tel: 01223 863895

A Very Happy New Year to All Our Customers and a Big Thank You! We are excited to announce that the Restaurant refurbishment took place during the middle of January: it now offers a cosy and less formal dining experience complete with new seating and layout. Call in and see for yourselves!

### Forthcoming & Speciality Dining Events

Valentine's Day Dinner: 13th and 14th February. Treat the 'One you Love' to a romantic evening, menu now available!

An Evening of Contemporary Italian Pasta Dishes: 25th February.

Mothering Sunday Lunch: 15th March. Bring along the family: it's time to spoil Mum! (Booking recommended)

An Evening of Dishes from the Provençal Region of France: 25th March

We're proud to say our menu is packed with Great British pub food classics, including dishes like hand-battered fish and chips, succulent sausages and mash and our fantastic Chef's Signature Dishes. Our drinks include a great range of real ales and an extensive wine list. Still serving our Winter Warmer Ales, including Pegasus and IPA, with an ever changing choice of guest beers, such as Fireside!

The team at the Jolly Brewers look forward to welcoming you soon! Call us for all Restaurant and Accommodation bookings or view events and menus on the website.

[www.jollybrewersmilton.co.uk](http://www.jollybrewersmilton.co.uk)



**YOUR PROPERTY LOOKED AFTER AS IF IT WERE OUR OWN**

**LETTINGS  
LETTINGS  
& LETTINGS,**

Lettings and  
Property Management  
Specialists  
Over 30 Years  
Experience in the  
Cambridge Lettings Market  
24/7 contact

**IT'S ALL  
WE DO,  
7 DAYS A  
WEEK**

Direct line to Jo Clark  
**07976 463 944**  
Direct line to Nicola Webb  
**07896 352 160**  
Office 01223 967277  
or 01954 214441  
[www.letsrentcambridge.co.uk](http://www.letsrentcambridge.co.uk)  
[info@letsrentcambridge.co.uk](mailto:info@letsrentcambridge.co.uk)



Lettings and  
Property Management  
Specialists



## Landbeach and Milton Baptist Church

### Sunday Services

- 10.30am Family Service
- 6pm Evening Worship

### Midweek Home groups

- Tues 7.30pm, Landbeach
- Thurs 10.30am, 143 Waterbeach Rd.

All are welcome to our small but friendly fellowship. Further details from Maureen Clark, tel 01954 250118

### EMPLOYMENT OR FAMILY PROBLEMS?

- \*Settlement Agreements\*Unfair Dismissal\*
  - \*Discrimination\*Breach of Contract\*
  - \*Divorce\*Children Disputes\*
  - \*Financial Settlements\*Separation Agreements\*
- FREE INITIAL ADVICE**

**SMITH  
MAY  
SOLICITORS LLP**

Barnwell House, Barnwell Drive,  
Cambridge CB5 8UU

**BRIDGET GILTINANE – Family Lawyer**

[bridget.giltinane@smslaw.co.uk](mailto:bridget.giltinane@smslaw.co.uk)

**JOANNE MAY – Employment Solicitor**

[joanne.may@smslaw.co.uk](mailto:joanne.may@smslaw.co.uk)

**CALL 01223 415372**

**FREE PARKING**

[www.smslaw.co.uk](http://www.smslaw.co.uk)

### Sunday services



### Midweek groups & events

#### 8am Holy Communion

A quiet, reflective way to  
start the day.

#### 10.30am Morning Worship with Children's Groups

Designed to cater for the  
whole church, from ages  
0-100+. Refreshments  
served.

**Evening Services**  
See website.

Little Rainbows Toddler  
Group, Parents & Under  
1s, Lunch Club, Mothers'  
Union, Stitchers' Club,  
Reading Group ...

For full details of all  
these and more  
please visit:

**[allsaintsmilton.org.uk](http://allsaintsmilton.org.uk)**

## Milton Good Companions

Milton Good Companions Club has enjoyed a good year with various speakers and in-house entertainment and lunch at The Dolphin, St Ives in the summer.

We are pleased to say we have a full house at present so if anyone is interested in joining us we now have a waiting list. Membership is by invitation to residents of Milton and Pauline or Margaret are happy to speak to anyone who is interested. Phone 860620 or 860829.

We are always looking for volunteer help and in particular we would appreciate more help with car transport. This involves about an hour in the morning and afternoon picking up and taking home the members which would involve help on a 3- or 4-week rota. Interested? Contact Margaret on 860829.



*Members and volunteers getting ready to enjoy their Christmas Dinner (above) prepared by our very able cook, Lorna Sheen, and her team of helpers (below).*



## Christmas Family Fun Success at Farm

Woodside Farm welcomed over 400 people on Christmas Eve for the College of West Anglia's Christmas family fun day. Attractions included craft activities, a live nativity of donkeys, sheep, pigs, llamas, alpacas, cattle and chickens, Father Christmas taking any last minute present requests, and local carol singers got everyone into the festive spirit.

Don't worry if you missed out on Christmas Eve: we look forward to building on the event for Christmas 2015! And the farm is open every 1st & 3rd Saturday of the month for Farmer Toms Open Mornings, 11am-1pm. Car parking available at the farm, £5 per family which includes feed to give to our animals, a ride on the pedal tractors and colouring activities.



**AG First Aid  
Training**

**Amelia Grant**  
First Aid Trainer Instructor

31 Old School Lane

Milton, Cambridge

[ameliagrant@btinternet.com](mailto:ameliagrant@btinternet.com)

<http://www.agfirstaidtraining.co.uk>

07795680733

*Luxury  
therapies  
at affordable  
prices.*

**No27**  
THERAPY ROOM  
Tracy Wesson  
Holistic Therapist

27 Fen Road · Milton · Call 01223 501534  
[WWW.NO27THERAPYROOM.CO.UK](http://WWW.NO27THERAPYROOM.CO.UK)

**20% OFF**  
all treatments  
on your first  
booking

## Stamps, Collectables, Toys & Toiletries

I am very grateful for the steady stream of used stamps that I receive all year round and dispatch to the Leprosy Mission, but I am aware that there are thousands still being thrown away in ignorance, which could raise even more to help and heal lepers around the world. Please keep sending and tell your family, friends and work colleagues of my plea. This includes medals, old and foreign coins, cigarette & post cards, match boxes and other collectables. I also send haberdashery, toiletries, clothes and toys to Romania and its adjoining countries, through Mission for Europe.

I can collect or you can leave at my door, at All Saints' Church or at Milton Post Office.

*Paul Mutimer, 54b Fen Road (tel: 440674)*

## Collared Doves: Beware of the Buzzard!

In *Milton Village View* (issue 94, October 2010), I wrote about the common buzzard becoming a familiar sight hovering over Milton. Since then, many people in the village have seen this majestic bird with its cat-like call, particularly gliding over the country park and above fields off Fen Road. It seems that the buzzard is likely to stay a while yet because it has a plentiful supply of food: not just the large rabbit population in the country park but also the collared dove, that all-too-common bird with light grey feathers and black collar that came to Britain over 50 years ago after migrating across Europe.

Recently, in our garden in Fen Road, there was a great flapping of wings, with feathers flying into the air right outside our window: a large buzzard had plunged down, brown wings spread, yellow legs with talons sunk into its prey, to catch a collared dove. Others have witnessed a similar event in the village. Nature has a way of controlling over-populations of species, although this bird does have an alternative image as a dove of peace!

Copies of my book *Milton through Time* (£10.99) and the reprint of *William Cole of Milton* (£10) are still available: contact me on [booth30@btinternet.com](mailto:booth30@btinternet.com) or phone 860116.

*Derek Booth, Parish Archaeological Warden*

### PHYSIOMOBILE

**Sarah Koets BSc MCSP MAACP**

Registered with the Health and Care Professions Council

- Back and neck pain
- Sports injuries
- Post operative rehabilitation
- Arm, hand and shoulder problems



- Hip, knee and ankle pain
- Repetitive strain injuries
- Postural problems

Self referral accepted Recognised by all major insurers

Milton Surgery, 87 Coles Road, Milton, Cambridge, CB24 6BL

**07790 512094** - [www.physiomobile.co.uk](http://www.physiomobile.co.uk)

Also at: Fen Ditton and Girtton

## Wildlife Notes

As I write this, it seems that Christmas is only just over, but I know by the time this drops through letterboxes, there will probably be reasonable numbers of snowdrops in sheltered places and the rest of the spring bulbs will be showing promising foliage, even though it will still be deepest winter. There were actually some snowdrops nearly in flower on New Year's Day at Anglesey Abbey.

The winter migrants on the water in the Country Park will still be there for at least another month or two. When I had a couple of walks over Christmas, there were large numbers of gadwall and tufted ducks. The islands in the middle of Dickerson's seem very popular with cormorants, which I also see on the river. There are also a decent number of shovellers and wigeon, which are both a lovely sight. There appear to be a large number of greylag geese, which seem to come and go noisily in large groups at random times of day and night. They seem to fly north, so whether they are heading for the lakes near Waterbeach, I don't know. The little grebes are shunning the Country Park this season; there are plenty of them on the river.

The birds are appreciating the garden feeders. If you have feeders it is worth keeping them well topped up. There are several pyracantha bushes in my neighbourhood including a magnificent hedge. It was quite amusing cycling past these bushes when there are still berries there and seeing the blackbirds flying out with a real commotion.

It will be lovely when it's warm enough for the hedgehogs to start visiting again. I hope they have survived their hibernation. I'm going to keep an eye out for any poo in the garden, as then I can start putting some food out for them to give them a head start in recovering from their lean winter. That will be a real sign that Spring is happening.

*Heather Coleman*

## GJK Accountancy Limited

**Accountancy services**  
**annual and monthly accounts**  
**bookkeeping**  
**VAT and tax returns**  
**Company formations**

griffith.kinsman@ntlworld.com  
 30 The Rowans, Milton, CB24 6YU  
 Mobile 07710 503 148

## Curry & Pizza

Selling delicious...

- ♦ Curry
- ♦ Southern Fried Chicken
- ♦ Burgers
- ♦ Pizza



6B High Street, Milton, Tel: 861948

## Dance, Movement and Storytelling for Children

Through lively classes we invite children to participate in stories and movement in order to encourage independent thought and enquiry. Our material is lively, educational and creative, encouraging both group interaction and individuality.

### Classes on Friday afternoons at Milton Primary

3.30pm (2-4 years) and  
 4.15pm (4-7 years)

We also run workshops in the holidays and Children's Birthday Parties!

Tel. 07837844759

michelle@creativemovements.co.uk

www.creativemovements.co.uk

www.facebook.com/cambridgecreativemovements





*The Cathedrals Express passing Milton  
Level Crossing on 6th December 2014.  
(Photo: Paul Oldham)*

# Godden Auto Services Ltd

*Benet Garage, Cambridge Road, Milton, Cambridge, CB24 6AW*

**Servicing and repairs  
to all makes of vehicles**

**MOT TESTS WHILE YOU WAIT**

**By appointment only**

**[www.goddenautoservices.co.uk](http://www.goddenautoservices.co.uk)**

**All major credit cards accepted**

**Tel: 01223 420380**

**Opening times: Monday to Friday 8.30am—5.30pm, Saturday 8.30am—12.30pm**