



# Milton Village View

Est. 1991. Issue No. 113- June 2014

[www.milton.org.uk/mvv](http://www.milton.org.uk/mvv)

## A14 Changes Underway

As you will have seen, a programme of road improvements has now started on the A14 between J31 at Girton and J32 at Histon, and is likely to take up to 10 months to complete. The improvements include adding an additional lane in both eastbound and westbound directions and improving the existing westbound slip roads at the Girton interchange (to both the M11 and A14), and are intended to improve traffic movements through this extremely busy section of road.

This is just a precursor to the main Cambridge to Huntingdon upgrade which will include adding extra capacity (but not tolling it).

The proposal now is for the three lane section to be extended



from Histon, where it will end after the current work is completed, as far as Milton. They have dropped the proposal to upgrade the A14 to three lanes as far as the next junction at Ditton Lane. **A consultation on the new proposals is now being held and will run into mid-June.**

Here's a snapshot from the consultation document (left). Items of interest include:

- the extra dedicated lane for traffic coming off the A14 eastbound going north up the A10
- a third lane on the eastern bridge on the existing roundabout

There are large exhibitions at numerous locations (details on the website). You can also view the consultation materials until 15th June at various community centres including Travelodge Cambridge Orchard Park (24 hours) and A14 Cambridge Services, Boxworth.

The deadline for responses is **Sunday, 15th June.**

Comments on the proposals can also be made by completing a questionnaire:

[www.highways.gov.uk/A14CambridgetoHuntingdon](http://www.highways.gov.uk/A14CambridgetoHuntingdon)

*Paul Oldham*

## Village View is Changing Shape!

From the September issue, Village View will be printed in an A5 booklet format. This gives us more flexibility with the layout of the magazine and also means that we can accept some more advertisers. If you are interested in advertising in Milton Village View, please contact [miltonvillageview@gmail.com](mailto:miltonvillageview@gmail.com). For any other queries, please contact [vv@miltonvilage.org.uk](mailto:vv@miltonvilage.org.uk).

*Mary-Ann Johnson*

## Sewage Works Upgrade

Anglian Water have just started a £21 million upgrade to the sewage works on Cowley Road. The vintage 1915 filter beds (the main cause of the smell and flies) will be decommissioned and replaced with a pumping station and eight new treatment tanks.

Phase 1 of the work will finish in March 2015, and phase 2 by Autumn 2015. In the meantime, they have been 'dosing' the pumping stations to try and prevent the sewage going septic (and therefore smelly) by the time it reaches Cowley Road.

*Mary-Ann Johnson*

### SILVER SERVICE TAXI

*Licensed Taxi Service, Reliable, Local & Friendly*

**Ian May**

**Mobile 07989 197816**

Tel: 01223 502609

email: [silverservicetaxi@gmail.com](mailto:silverservicetaxi@gmail.com)



Multi-Seater 1 to 8 passengers

Airport & Group Bookings welcome

Special Needs & A Speciality

[www.silverservicetaxi.co.uk](http://www.silverservicetaxi.co.uk)

**Celebrating over 10yrs Supplying Taxi Services in Milton**

## In This Issue...

- Buses & the Tour de France
- Fantastic Fundraisers
- Milton History Books

*And much more!*

## Contact Us

Send us your news and photos:

**vv@miltonvillage.org.uk**

1 Knights Way, Milton, CB24 6DE

Deadlines for articles are:

**12th January**

**12th March**

**12th May**

**1st September**

**1st November**

Issues will be published approx.  
2 weeks after the dates above.

## Online Archive

Find back copies of Village View  
(back to April 2011) on our website:

**milton.org.uk/mvv**

Printed by Langham Press Ltd.

**Delivered Free  
Circulation 1,850**

### Publisher's Notice

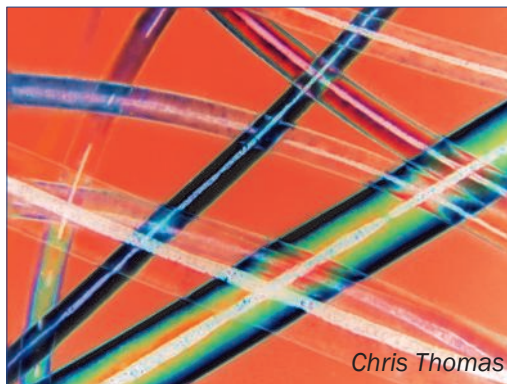
Whilst every effort is made to ensure accuracy the publisher accepts no responsibility for errors or omissions. Views and opinions expressed in the Village View are not necessarily those of the publisher or the editorial staff. The publisher does not accept any responsibility for claims made by advertisers.



## Events

### Cambridge Open Studios 2014

July heralds the start of Cambridge Open Studios. In Hall End, off Fen Road, photographer, Chris Thomas and illustrator and printmaker, Alison Hullyer, can be found in their studios on the weekends of 12 - 13th and 19th - 20th July from 11am until 6pm.



Chris Thomas

Follow the yellow flags to see Chris's dazzling photographs taken through a microscope. He will have a variety of postcards and large prints for sale. His common and unusual subjects reveal hidden beauty and structures. This year's theme will be HAIR, and if you remember the 60's, it might remind you of the Psychedelic era. He'll have his microscope on hand and welcomes old friends and new visitors.

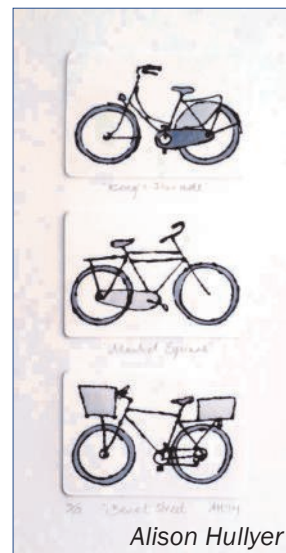
Alison will be exhibiting for the 18th year. She will be showing new

drypoints inspired by patterns in nature, boats and bicycles. Pictures are available framed and unframed. Also this year she has screen printed tea towels and coasters as well as a large selection of her cards and wrapping paper, published by award winning publisher Phoenix Trading. There will be printmaking demonstrations and she is happy to answer questions about her work.

Pam Paterson is taking part in Open Studios for the first time and is open all four weekends in July. With ten years of experience with bead weaving, visit her studio at 2 Mansfield Close, to see her jewellery and other items.

You can pick up free guides, which include a map showing nearly 300 artists taking part, from the Post Office, Community Centre and many other places. To find out more see:

[www.camopenstudios.co.uk](http://www.camopenstudios.co.uk)  
[www.hullyer.co.uk](http://www.hullyer.co.uk) / [www.miltoncontact.com](http://www.miltoncontact.com)



Alison Hullyer

### Holiday Club for Primary-Age Children

Monday 18th & Tuesday 19th August 2014 10am-3pm  
including lunch, at All Saints'

Join Professor Topping, The Quality Controller and Captain Ketchup for two days of songs, drama, stories, games, craft, food and very bad jokes!

Advance booking essential: download booking form from  
[www.allsaintsmilton.org.uk](http://www.allsaintsmilton.org.uk) or call 01223 441007.



**All Saints  
MILTON**  
Church at the heart of the community

**Stephanie's**  
MILTON'S UNISEX HAIRDRESSERS

Professional Hairstyling for Men and Women

Telephone: 01223 420526

Discount for all new clients

49 Cambridge Road, Milton, Cambridge, CB24 6AW

**PAINTING  
DECORATING  
GLAZING**

Mobile  
07860 453533  
Phone:  
01223 700800  
(local resident)



**B.J. LEONARD**

**M.J Potts**

**M.J Potts**

**HEATING & PLUMBING  
SERVICES LTD**

- GAS SAFE REGISTERED
- Boiler Installation - Gas & Oil
- Complete Bathroom Design and Installation
- Landlords Certificates
- Power Flush
- Tiling
- Under Floor Heating
- Gas Boiler Servicing
- Free Estimates

\* Covering Cambridge for 30 years \*

**iphe**

Ph: 01223 242544

Email: [malcolm.potts@btconnect.com](mailto:malcolm.potts@btconnect.com)  
Unit 8, Ronald Ralph Court, Wadoes Road,  
Cambridge, CB5 8PX

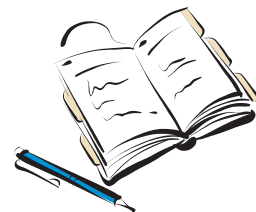


2163



# DIARY DATES

See p.9 for more events at the pubs.



## June

- Sat 7th** Galactosaemia Fun Run/Walk, Milton Country Park (See [www.gsgfundraising.org](http://www.gsgfundraising.org) for details)  
**Sun 8th** Open Farm Sunday — animals, demos, craft, quiz & rides, College of West Anglia, 10am-3pm  
**Sun 8th** Cruse Footprints Memory Walk, 10am, Milton Country Park (See [www.cruse.org.uk/cambridge/events](http://www.cruse.org.uk/cambridge/events) for details)  
**Sat 14th** CAMSAR World Record Attempt Hide & Seek Event, 12pm, Milton Country Park (See [www.camsar.org](http://www.camsar.org) for details)  
**Sun 15th** Macmillan 10k Father's Day Run, Milton Country Park (See [www.macmillan.org.uk](http://www.macmillan.org.uk) → 'Get Involved' → 'Events')  
**Sat 21st** Open Day at Emmaus (off the A10), 9am-5pm  
**Sat 21st** Family Open Day at AmeyCespa waste management park (off the A10), 10am-4pm  
**Sat 21st** Fun Open Day at New Apostolic Church (Milton High Street), face painting, cakes, choir, 10am-4pm, Free Admission  
**Sat 21st** Musical Evening with Sheanna Ashman Wind Players' (children from Milton) Church Hall, 6pm, Free Admission  
**Sat 28th** Parklife, a chance for adults and children to try new outdoor sports for free, Milton Country Park

## July

- Thurs 3rd** GoTri Cambridge mini triathlon for beginners, Milton Country Park (See [www.entrycentral.com/GOTRI-Cambridge](http://www.entrycentral.com/GOTRI-Cambridge))  
**Sat 12th** Milton Summer Fayre, Coles Road, 1.30-10pm (See p.5 for details)  
**Sun 13th** Alzheimers Big Walk, 5km / 10km, Country Park, 10am start (See [www.everydayhero.co.uk/event/Big-Walk-2014](http://www.everydayhero.co.uk/event/Big-Walk-2014))  
**12th-13th, 19th-20th** Open Studios (See p.2 for details)  
**Sun 27th** Family Angling open day, 10am-4pm, Milton Country Park (See [cambridge-fpas.co.uk](http://cambridge-fpas.co.uk) for details)

## August

- Fri 1st** Alice in Wonderland, Milton Country Park (tickets from park office or [www.cambridgetouringtheatre.co.uk](http://www.cambridgetouringtheatre.co.uk))  
**Sat 9th** Mothers Union Garden Party to celebrate Mary Sumner Day  
**Sun 10th** SQWHEEL Fun Family Bike Event, 10am-3pm, Milton Country Park  
**18th-19th** Pizza Factory holiday club, All Saints' Milton, 10am-3pm (See p.2 for details)

## September

- Sat 21st** Food, Farming & Countryside Day, including Produce Show and Dog Show, Milton Country Park

See [www.milton.org.uk/diary.html](http://www.milton.org.uk/diary.html) for more event details. See [www.miltoncountrypark.org](http://www.miltoncountrypark.org) for more park event details.



Local charity Emmaus (off the A10) will be welcoming the general public at its Open Day on Saturday 21<sup>st</sup> June. You may have visited the charity's second-hand superstore but rarely get to see behind the scenes.

With tours of the accommodation and gardens, stalls, displays and music throughout the day, the Open Day will give people an opportunity to better get to know the community and what they do.

## Paddleboarding Returns to the Park

You can learn to walk on water when paddleboarding returns to Milton Country Park this summer. Experts say paddleboarding, which involves standing on a board and moving through the water using a long paddle, feels like walking on water because it works on the still surface of a lake.

One of the world's fastest-growing water sports, paddleboarding is good exercise for the whole body and easy to learn. The boards are lightweight but incredibly buoyant and stable.

Forty-five minute taster sessions, led by qualified instructors, will run between 10am and 1pm every Sunday up to the 29th June. Sessions cost just £10 per person.

For those wanting to progress from the thirty minute taster, sixty minute sessions will be available between 1.30pm and 3.30pm on the same days at a cost of £14 per person.

Spaces are limited so please book early to avoid disappointment by contacting Helen Stepney on 07732 222905 or [helen.stepney@scambs.gov.uk](mailto:helen.stepney@scambs.gov.uk).

Paul Oldham

**J.P.Morley**  
Roofing

Est. 1985

All types of roofing  
Flat roof specialist

1 Old School Lane, Milton  
Home: 01223 863259  
Mobile: 07941 198771  
[josephmorley@btinternet.com](mailto:josephmorley@btinternet.com)



- Servicing, Installation and Repairs
- Gas Boilers, Fires, Cookers and Central Heating Systems
- Powerflush Cleansing of Central Heating Systems
- Energy Efficiency upgrades
- Landlord Gas Safety Checks and Certificates

Contact - Eddie Kikas  
Your Local Gas Specialist  
Tel/Fax: 01223 861810 Mobile: 07831 228181  
Email: [miltongas@btinternet.com](mailto:miltongas@btinternet.com)  
[www.miltongas.co.uk](http://www.miltongas.co.uk)  
51 Bourneys Manor Close, Willingham, Cambridge, CB24 5GX



**Pilates Classes**  
**Milton & Landbeach**

Mon 9.30am - Mixed Ability Mat Class (MCC)  
Mon 10.30am - Mixed Ability Mat Class (MCC)  
Tues 6.20pm - Intermediate Mat Class (Sch)  
Tues 8.15pm - Mixed Ability Mat Class (Sch)  
Fri 10.30am - Mixed Ability Mat Class (LVH)

Contact Liz on 07768 155278  
or [liz.dolman@lovepilates.co.uk](mailto:liz.dolman@lovepilates.co.uk)  
NVQ level 3 Pilates & PureStretch Instructor  
For further info, visit [www.lovepilates.co.uk](http://www.lovepilates.co.uk)



## Thank You

A big thank you from all the Trustees, staff and beneficiaries at Phoenix for the exceptional number of visitors we have received over the recent school holidays and especially on Easter Sunday when the Easter Egg Hunt took place.

Many people now use the gateway from the Milton Country Park to see what we have to offer and often they leave after making a purchase or placing an order for one of our larger items like our picnic tables or benches.

Following a live broadcast on BBC Radio Cambridgeshire on Easter Sunday saw 154 children visit our site to collect their Easter eggs, together with their parents. Many visitors took time to have a good look around and our wooden products attracted a lot of interest; as a result subsequent orders for three arbours were placed amongst other smaller items.

Our thanks also to BBC's Christopher South for promoting Phoenix on the Sunday gardening programme.

Being a Social Firm we rely on product sales, training income and grants to continue providing the backing for our beneficiaries which is our prime objective namely supported work experience and training for young people and adults with learning difficulties.

Pay us a visit and view our large range of concrete and wooden products together with our selection of pot plants, all situated in our improved site.

Everything on sale is either made or grown on site. We buy nothing in for resale. Phoenix is open Tues to Friday 9.00 till 4.00pm Tel: 01223 420669

Barry Jefferson (Chairman)  
The Phoenix Trust (Milton) Ltd  
Unit 8, Milton Trading Estate  
[www.phoenixtrust.org](http://www.phoenixtrust.org)



*For all your Concrete  
And Wooden Garden Products*

Paving, Edging, Ornaments, Bird Feeders, Planters, Trellis,  
Nest Boxes, Pot Hangers, Picnic Benches and much more

A limited range of Pot Plants  
for your Garden, Planters, and Pot Hangers

Tel: 01223 420669

[www.phoenixtrust.org](http://www.phoenixtrust.org) Unit 8, Milton Trading Estate

*Supported work experience for people with learning difficulties*

## Park & Ride Latest

If you wrote to Cambridgeshire County Council about the proposed charges to park at the Milton P&R site you should have got a letter from the council thanking you for your representation.

The letter details the changes:

- that the charge of £1 will apply for 18 hours parking rather than 12;
- that parking will be prohibited in Butt Lane beyond the A10 bypass;
- that the council will undertake a survey of the level of parking in Milton before and after the introduction of the parking charge, to see what effect if any the parking charge has on parking there.

It's also worth noting that the letter says:

The largest number of representations were concerns about the risk of parking being displaced, in particular in the village of Milton and increasing the level of traffic around Milton Primary school.

so thank you to everyone who wrote in. The volume of representations clearly had an effect.

Paul Oldham

## Event on The Sycamores Recreation Ground

On Thursday 24<sup>th</sup> July, local company Velocix (Sponsors of Milton Community Football Club) will be holding their annual Staff Summer Party at The Sycamores Recreation Ground. This will run on similar lines as last year and is likely to be attended by around 100 members of staff and their families. The party will start at 1.00pm, it will feature live music and will be finished by 6.00pm. Velocix will use part of the ground close to the Pavilion and Youth Building; the remaining area will be available for use by the general public. Attendees will be encouraged to park in the Recreation Ground car park.

Andy Gray, Manager, Milton Community Centre

## Effect on Buses of the Tour de France

As you probably know by now, the Tour de France comes to Cambridge on 7th July and one of the consequences is alteration to city bus routes. You can find details online at [www.cambridge.gov.uk/le-tour-cambridge](http://www.cambridge.gov.uk/le-tour-cambridge). The main impact for Milton is that:

- service 9 - will terminate on Milton Road near the City Ground
- Milton P&R - will terminate on Milton Road near the City Ground
- Citi 2 - will not go into the city centre; it will divert via Coldham's Lane and Newmarket Road

The most significant element of this is that **if you have a hospital appointment on 7th July and normally use the P&R service this won't be available to you** so you may want to re-book your appointment or make other travel arrangements. The tour route is online to help you plan your journey but it's likely that the whole of Cambridge will be very busy that day.

Paul Oldham

## Harmony

Hair and Beauty Salon



[www.harmonysalon.co.uk](http://www.harmonysalon.co.uk)

Expert hair stylists for Men, Women and Children  
Beauty therapists offering a range of treatments

Telephone **01223 863636** to book an appointment

6 High Street, Milton, Cambridge, CB24 6AJ

Open 9-6pm Monday - Friday  
9-2pm Saturday



Dance Fitness Class

**Zumba Classes in Milton 2014**  
**Licensed Zumba Instructor Liz Dolman**

Milton Primary School  
Tuesday Nights 7.15pm  
All Abilities Welcome  
Weekly £6 or 5 Session Card Available

For further information  
contact Liz on 07768 155278  
or [liz.dolman@love2zumba.biz](mailto:liz.dolman@love2zumba.biz)  
Visit [www.lovepilates.co.uk/zumba](http://www.lovepilates.co.uk/zumba)



## Railfuture Conference & Science Park Station Update

Many Milton residents are regular users of the railway. At peak times it can take up to 30 minutes to drive from Milton to Cambridge station, and even longer by bus. One alternative, if you are going to London, is to drive to Waterbeach station. However, from May 2016 everyone in Milton will have much easier access to the national rail network when the new £30m Cambridge Science Park station is opened. Located on part of the Chesterton sidings site, the new station will be a quick cycle ride away, or up to 30 minutes' walk. Planning approval has been given and funding has been assured. Construction will be commencing in the summer. The station will have frequent services, not just the stations to King's Cross and Liverpool Street in London but also to Norwich, King's Lynn and, still subject to confirmation, Stansted, Peterborough, Leicester and Birmingham.

The project is being managed by Cambridgeshire County Council, which had first proposed a station in 1987. The council's project manager, Bob Menzies, who was previously Head of Delivery for the Guided Busway, will be speaking at the all-day Railfuture national conference in Cambridge at the

University Centre on **Saturday 21st June 2014**. He will be joined by his colleague, Jeremy Smith, who will talk about the council's aspirations for the railway over the next 20 years. The conference will be a great opportunity to find out what is planned and to ask questions. Amongst the speakers will be the managing director of First Capital Connect, one of the two local train operators.

The modest fee to attend the non-profit-making conference includes refreshments upon arrival and a buffet lunch. All of the speakers will be focusing their presentations on the importance of the railway to Cambridge. **Use the offer code 'MVV'** to get £5 off the price!

Details are at [www.railfuture.org.uk/conferences](http://www.railfuture.org.uk/conferences), where you can book online (with a credit/debit card, or using your PayPal account) or download a flier and post it off. Anyone who joins Railfuture having attended the conference can claim £5 off the membership fee, in addition to the discount on the conference.

*Jerry Alderson*

## Milton Summer Fayre Saturday 12th July 1.30-10.00pm

We have a great line up again this year, with the local stalls, fair rides, go karts, inflatables, reptiles etc. We also have a fun dog show & scurry – please give them some support by bringing your dogs along to join in the fun.

There is a fantastic line up of music from all local young bands: The Rowans, DeWolf, Sound of Pop Art & Stormdreamer, with Phil Laws band Stiff playing us out until the end of the evening.

All proceeds this year from committee-led attractions (such as sale of programmes, raffle tickets, pro mobile inflatables) will be donated to EACH Hospice in Milton.

**All we want now is your company & the sunshine** – we are looking for help on the day selling raffle tickets etc., so if anybody could spare half an hour please let us know. If you haven't booked your stall yet, the booking form is available in the April issue of MVV at [milton.org.uk/mvv](http://milton.org.uk/mvv).

The present committee are stepping down this year and would like to say thank you for your help and support for this great family village event.

Milton Summer Fayre is still looking for a new committee – unless someone takes it over, there will NOT be a village fayre next year! If you are interested, please come and speak to one of the committee on the day or email us at [miltonfayre@yahoo.co.uk](mailto:miltonfayre@yahoo.co.uk).

*Lynda Molloy*

## Update on Lent Matters

Each Tuesday in Lent the MU hosted a lunchtime talk which was followed by a tasty soup and lively conversations around the table. Our invited speakers addressed a range of topical subjects and provided much food for thought. Many thanks to everyone who came along and supported this initiative. £300 was raised to further MU projects in South Sudan.



## Forthcoming MU Events

We continue to offer a varied programme of events as we seek to support the mission of the Mothers' Union, which is to bring transformation to communities world-wide, through the promotion of stable marriage, family life and the protection of children.

We look forward to welcoming members and non-members alike to our forthcoming meetings. Check us out the All Saints' Milton Mothers' Union Group page on Facebook or contact Jackie Metcalfe at [jacques0701@gmail.com](mailto:jacques0701@gmail.com) for further information.

**PHYSIOMOBILE**  
Sarah Koets BSc MCSP MACP  
Registered with the Health Professions Council

- Back and neck pain
- Sports injuries
- Post operative rehabilitation
- Arm, hand and shoulder problems
- Hip, knee and ankle pain
- Repetitive strain injuries
- Postural problems

Self referral accepted Recognised by all major insurers

Milton Surgery, 87 Coles Road,  
Milton, Cambridge CB24 6BL

07790 512094 - [www.physiomobile.co.uk](http://www.physiomobile.co.uk)

## If You Live Near Milton, Fixing Your Car Doesn't Have To Be Expensive!

We've a reputation for treating our customers as if they're family.....so you get top quality, friendly service at some of the best prices in town. But don't just take our word for it, see our customer reviews at:

[www.cambridgeonline.com](http://www.cambridgeonline.com) or [cr-autoservices.co.uk](http://cr-autoservices.co.uk)

**Tel: 01223 423982**

Unit 2, Cambridge Rd Ind Estate (nr. Milton Country Park), Milton, CB24 6AZ



**TYRES & SERVICING  
At Probably The  
Best Prices in  
Cambridge**

Approved fitting centre for blackcircles.com

### Lots of FREE Stuff

- FREE Vehicle Health Check
- FREE Antifreeze check
- FREE pre-MoT check
- FREE Brake Fluid check
- FREE Battery check

**M.O.T's at  
the best price in  
Cambridge!**

**From only  
£27\***

\* not available to trade

## Milton Community Café



April's launch of the Community Café featured David Hutchings' lemon cake and very chocolatey brownies. We also saw that the ladies have a very competitive streak, with Sue Nunn dominating the table tennis matches and Elaine Offley scoring highly on the air-hockey table. Thanks to Sally Milligan for helping out on the day.

We look forward to expanding our numbers this month on 27th May, 2:30-4:30pm. £1 per person includes drinks. You will find the Milton Community Café in the Youth Building on the Sycamores recreation ground, next to the sports pavilion.

This is a community activity run by volunteers and is an idea from the Milton Surgery PPG. May's sponsor of the hall hire and cakes is Milton Contact Ltd. For more information call Sue Nunn (861747) or Chris Thomas (440024).

*Chris Thomas*

## North Lodge Park Update

The road names have now been chosen for the North Lodge Park housing development. The main road through will be called "North Lodge Park", with side roads of "Lodge Close", "Repton Gardens" (after Humphry Repton, who designed the Milton Hall gardens and park in 1791) and "Daniels Park" (after the Daniels family in the village).

The North Lodge building itself (the derelict Victorian building near Ely Road) is being sold off separately as a renovation project, via Bidwells. Hopefully someone will take it on and restore this Grade II listed building to its former glory once again soon!

*Mary-Ann Johnson*

## EACH Gala Day Photos



This year's Gala Day for East Anglia's Children's Hospice was held on 11th May at Milton Hall. It was a great event and has raised many thousands of pounds for their worthy cause.



*Photo: Paul Oldham*

### AMBASSADOR LODGE BED & BREAKFAST

37 High Street, Milton, CB24 6DF  
(next to the Waggon & Horses pub)

Friendly, family-run B&B

Contact: Phil or Fizz Turner  
Tel: 01223 860168

www.ambassadorlodge.co.uk  
e-mail: ambassadorlodge@yahoo.co.uk

### C H LUMB (BUILDERS)

DRAINAGE - GUTTERING  
UPVC FACIAS & SOFFITS  
PATIOS & FENCING  
ALTERATIONS  
01223 354402  
Mobile 07762026290

### Michaela Overton F.CInst.L.Ex

- ♦ **Wills,**
- ♦ **Probate Assistance**
- ♦ **Lasting Powers of Attorney**

Tel. 07810 140967  
Free home visits



## From the Archives

10 Years Ago: June 2004

### New Rector at All Saints

Rev. David Chamberlin from Swardeston in Norfolk has been appointed Rector of All Saints' Church, Milton. His service of welcome and institution will be on Monday 6th September at 7.30pm at All Saints' Church. For further information please contact the church office on 441007 or visit - [www.allsaintsmilton.org.uk](http://www.allsaintsmilton.org.uk).



25 Years Ago: May 1989



### First Families at Children's Hospice

In July 1986 a meeting was held in Milton Church Hall at which the idea of establishing a respite care centre for chronically sick children and their families at the old Rectory was first explained publicly. Now, almost exactly three years later, having gone through the processes of purchasing property, designing an extension, obtaining planning permission, constructing new buildings, refurbishing the old one and raising over £1 million to finance the whole project, the Cambridge Children's Hospice for East Anglia is almost ready to receive its first families. After a series of open days during the second week of May when any interested members of the public were able to look round the Hospice, the staff are now preparing the final touches for the first guests to arrive during the first week in July.

## River Photos: Milton to Waterbeach

Rebecca Ostler



## Milton Woodwind at Music For Youth

On March 23rd pupils from Sheanna Ashman Woodwind Tuition performed their very own composition "Milton Doble" at the Music For Youth festival in Bedford.

The children were aged from 8 - 13 and played a variety of instruments - flute, clarinet, oboe, saxophone, bass clarinet and drum kit. We had a great day out - performing and listening to others perform. The feedback from the music mentors was very encouraging and positive and included comments like "What a brilliant piece!", "We love this group" and "You are all versatile musicians".



There will be a chance to hear the "Milton Doble" at our Musical Evening on June 21st in All Saints' Church.

### AFFORDABLE STORAGE

- ✓ SECURE STORAGE
- ✓ FLEXIBLE HIRE PERIODS
- ✓ COMMERCIAL & DOMESTIC
- ✓ RANGE OF SIZES AVAILABLE
- ✓ OFFICE & RETAIL
- ✓ 24 HOUR ACCESS
- ✓ EXCELLENT STORAGE
- ✓ CCTV MONITORED
- ✓ PICK-UP / DELIVERY SERVICE

01223 420440 / 07711 084164

email: [mwheeler.bromley@btopenworld.com](mailto:mwheeler.bromley@btopenworld.com)

UNIT 105, NORMAN INDUSTRIAL ESTATE, MILTON, CAMBRIDGE, CB24 6AT

## R.B. Electrical LTD

N.I.C. Registered

Your Milton Domestic  
& Industrial Specialists  
25 Yrs Experience

Tel. 365200

### PHYSIOTHERAPY

Treatment for sports injuries, back and neck pain, joint problems etc.

**Liz Cradock** MCSP, MICT  
Chartered Physiotherapist and  
Reflexologist, HPC registered

Recognised by major medical insurance companies

Treatments at:

'Wellbeing at 17', 17 High Street,  
Waterbeach CB25 9JU

Tel: 01223 860928 Mob: 07714 052389

Email: [liz.cradock.physio@gmail.com](mailto:liz.cradock.physio@gmail.com)



## Lord Williams Visits Milton Primary School



The Rt Revd, Rt Hon Lord Williams of Oystermouth PC came to visit the children of Milton CE Primary School on May 7th to dig over their Foodshare Garden and plant a Rowan and Williams pear tree to commemorate his visit. Lord Williams found out from the pupils what it means to be 'Food philanthropists' before

rolling up his sleeves to work with the children on the Foodshare Garden. The school supports EACH and Jimmy's Soup Kitchen. Head teacher Anna Reeder said, "The children were very excited about Lord Williams' visit and they enjoyed showing him the fruit of their labours, and gardening with him. Foodshare has had an enormous impact on the whole school and we are very proud to have been the first ever Foodshare Garden."

Foodshare is an international charitable movement founded in Cambridge that enables school children to grow and donate food, helping to nourish the most vulnerable people in their local community. Milton Primary School set up the first Foodshare Garden in 2009 as a result of an idea by recording artist Mark Desvaux and Cambridge entrepreneur Dan Spencer. Since then, over 7500 school children across the UK and internationally have joined the Foodshare family, donating over £100,000 of fresh produce to over 200 organisations. To donate please visit [nottscf.org.uk/donate/foodshare](http://nottscf.org.uk/donate/foodshare)



### Sunday services

#### 8am Holy Communion

A quiet, reflective way to start the day

#### 10.30am Morning Worship with Children's Groups

The 10:30am service is designed to cater for the whole church, from ages 0-100+. Refreshments served.

#### Evening Services

Monthly programme—see website.

### Midweek groups & events

Little Rainbows Toddler Group, Parents & Under 1s, Lunch Club, Mothers' Union, Stitchers' Club, Reading Group ...

For full details of all these and more please visit [www.allsaintsmilton.org.uk](http://www.allsaintsmilton.org.uk)

### EMPLOYMENT OR FAMILY PROBLEMS?

\*Settlement Agreements\*Unfair Dismissal\*

\*Discrimination\*Breach of Contract\*

\*Divorce\*Children Disputes\*

\*Financial Settlements\*Separation Agreements\*

**FREE INITIAL ADVICE**

**SMITH**

**MAY**

**SOLICITORS LLP**

Barnwell House, Barnwell Drive,  
Cambridge CB5 8UU

**BRIDGET GILTINANE – Family Lawyer**

[bridget.giltinane@smslaw.co.uk](mailto:bridget.giltinane@smslaw.co.uk)

**JOANNE MAY – Employment Solicitor**

[joanne.may@smslaw.co.uk](mailto:joanne.may@smslaw.co.uk)

**CALL 01223 415372**

**FREE PARKING**

[www.smslaw.co.uk](http://www.smslaw.co.uk)

## Rotavirus Vaccination Success

Dr Hunt from Milton Surgery is keen to share the results from vaccinating babies against rotavirus. Rotavirus is a particularly nasty disease and is the most common cause of severe diarrhoea among infants and young children.

Vaccination started in the UK in July last year using an oral vaccine and the first results of programme have just been published online at [tinyurl.com/mvv-rotaviruspdf](http://tinyurl.com/mvv-rotaviruspdf). They're best summed up by the observation that at the peak they were getting about one sixth of the cases of a typical year pre-vaccination.

Paul Oldham

## Landbeach and Milton Baptist Church

### Sunday Services

10.30am Family Service  
6pm Evening Worship

### Midweek Home groups

- Tues 7.30pm, Landbeach  
- Thurs 10.30am, 143 Waterbeach Rd.

All are welcome to our small but friendly fellowship. Further details from Maureen Clark, tel 01954 250118

## Milton WI

Have you ever thought about joining Milton WI? We are an active group enjoying varied and interesting speakers each month as well as lunches, craft activities, walks, bowling and cinema trips. We have two darts teams in the WI league and these are doing very well. We don't sing Jerusalem at our meetings, and neither do we have to make jam, but what we do have is a good sense of support, fun and friendship. In April, Hilary Ritchie, Addenbrooke's Hospital archivist, transported us back in time to the Old Addenbrooke's Hospital in Trumpington Street and the Mill Road Maternity Hospital where many of our children (and even some of us) were born. It was very interesting to hear how it started with John Addenbrooke, and to see some of the old photographs. Our summer outing this year will be on 1 July to Hythe and the Romney Marsh. We have a few spare seats at the time of writing, and non-WI members are welcome to fill these.

At our June meeting, we will be hearing about the work of the Citizens Advice Bureau, and in July, Bob Harding-Jones will entertain us with "Laughter in the Village". We have a summer break in August but reconvene in September. Our meetings are held on the third Tuesday of each month in the Church Hall. New members are always welcome, and anyone can come along for a taster before deciding whether to join. Our President Gill Offley (01223 293231) or Secretary Bridget Crow (01223 441755) would be delighted to hear from you.

Anne Newman

## Milton Scout Group Minibus

For hire to non-profit community and voluntary groups (section 19 permit needed)

T: Rob - (01223) 860160

E: [minibus@50thcambridgescouts.org](mailto:minibus@50thcambridgescouts.org)

W: [www.50thcambridgescouts.org/minibus](http://www.50thcambridgescouts.org/minibus)

## STRIKE FIT

Fridays 1pm-2pm

Milton Community Centre

also available

**1 to 1 personal training**

Contact : Alex Campbell

Tel. 01223 862184 or 07746 122749

Email [alex@alexercise.co.uk](mailto:alex@alexercise.co.uk)

[www.alexercise.co.uk](http://www.alexercise.co.uk)



## White Horse

Tel: 01223 860327

With trees trimmed and benches ready, hopefully we will all have a good summer in our large garden at the back of the pub. New carpet has now been laid with more refurb happening soon.

Chef's Specials and menu available lunchtimes and evenings. More award winning ales coming soon, with a variety to choose from. Watch out for our 5th Beer Festival in September.

June 5th (9pm) Charity Quiz night for Camsight.

June 20th (9pm) Live Band: "JACK"

July 12th. Newmarket Races: Champagne breakfast here, then on to coach to Newmarket. Book Now.

August 22nd Live Band: "Split Whiskers"

Live World Cup games shown here: watch out for offers. All through the summer, there's Karaoke on the first Friday of the month, as well as Bingo every Wednesday and Quiz Night every Thursday.

*Ava & Alan, Adam, Emma, Kimberley, Shaun and Staff*

## Lion and Lamb

Tel: 01223 860202

We are delighted to say we raised over £300 for Cambridge Search & Rescue at our Charity Race Night on the 26th April.

We are pleased to be hosting Milton Football Club Presentation Evening on May 31st. Come on in and support your local team - Hog Roast followed by the live Boxing from Wembley on SKY Box Office.

June 12th-July 13th – WORLD CUP – WIN £250 to spend at the bar! We will be showing all the matches and offering late evening food on England games and for the latter stages of the competition too. Keep an eye on the blackboards for updates and details. Culminating in the WORLD CUP FINAL & Family BBQ on Sunday 13th July – all welcome!

June 3rd – Ladies Dinner Club with after dinner talk from Val Ross on Inspiring Women - The Life and Legacy of Anne Frank - £10 per person, including dinner.

June 13th – Live Band: "SUBMARINE RACERS" from 9pm

July 4th – Prom Night, "Dress to Kill" Disco and bar 9pm-2am

July 12th – find us at the Fayre behind the bar and hog roast

Sept 2nd – Ladies Dinner Club with after dinner talk and demonstrations from Ann Fordham, "The life of a Clairvoyant" - £10 per person, including dinner

Sept 12th – Soul Night with Andy Stearn and Star Radio's Chris Brown

*Lawrence & Sally, [www.lion-lamb.co.uk](http://www.lion-lamb.co.uk)*

## Jolly Brewers

Tel: 01223 863895

Open all day every day from noon – earlier openings can be arranged for group meetings. Food can be served in the Bar Area for a more informal meal.

May 30th – Jolly Brewers 2nd Birthday Celebration, music from local band "Stiff". Thai and Mexican Buffet served from 7pm. All advanced tickets purchased will be entered into a raffle with a chance to win Sunday Lunch for 2.

World Cup Promotion (June 12th-July 13th) – Buy a drink during the World Cup matches and you will be entered into a free prize draw to win a Keg of Beer or a Firkin of Ale. The winning ticket will be drawn at half time during the World Cup Final. GOOD LUCK!! England's group matches are 14th June (11pm UK time), 19th June (8pm) and 24th June (5pm).

June 15th – Father's Day

June 25th – Mediterranean Cuisine

Mid July – Wine Tasting Evening – recommend early booking!

July 30th – Greek Night

August 20th – Surf & Turf

Accommodation 2 Night Special – Any consecutive 2 night B&B stay only £140. For full details of all our menus and accommodation offers check out the website.

[www.jollybrewersmilton.co.uk](http://www.jollybrewersmilton.co.uk)

## Morning Glory Cycle

It's one of those lazy, hazy afternoons

Echoes the voice under the monarch's bridge.

Ride past the house with gabled-end and roundel

Slide past the purse-lipped blue butler forever serving at the sashed window

Observe the heady flow of blade on Calm water, blade on Calm water,

-without falling off-

Reach the haven, banked garden opposite where beehives sit on chairs, mounted

Green lawns stretched, stripe-mowed in glorious Summer coat

Richly fed and watered, espied through topiary hedge?

Rhythmic cow-mown tussocks chewed and chewed with dewy eyes

On passers by

Rolling foot over spindle and down

And up and over the verdant Dragon Bridge

Reverie jolted by jarring mallard calling

soothed by the Myna bird and lapping

Round the long boat's gleaming side.

At last, greeted by that double-fronted house,

Whose windows unseeing against the heat kept at bay,

Eponymous blue, such joy grown for all to see

Trumpeting Morning,

To be reborn the next day

Riverside

*Angela Steele, July 2013*

### Sports Therapy Services

Sports Massage and Injury Rehabilitation



Don't put up  
with the pain

SAVE 25% on your  
first appointment

Additional offers available

call Lesley on 07940 110309  
or visit  
[www.sportstherapyservices.co.uk](http://www.sportstherapyservices.co.uk)

### Need glasses?

Buy direct from the manufacturer!

SAVE UP TO 75%

Just bring in your up-to-date prescription for a Top Quality bargain.

- Premium frames & lenses
- High/Complex prescription
- Reglaze your own frame\*
- Emergency supply & repairs\*
- Free specs for NHS Vouchers\*
- Large selection of frames

(\*T&C's apply, please call for details)

Please telephone for an appointment

01954 231545 or 07824 706969

email: [info@all-eyes.co.uk](mailto:info@all-eyes.co.uk)

[www.all-eyes.co.uk](http://www.all-eyes.co.uk)



Visit our Factory Shop:  
20 Norman Way Ind. Park,  
Over, Cambridge, CB24 5QE  
Mon-Fri: 9.00am to 5.00pm

### Swedish Massage



Contact Alex Campbell on 01223 862184

or 07746 122749

email: [alex@alexercise.co.uk](mailto:alex@alexercise.co.uk)

Benefits include\*:

- Relief from Stress, Anxiety and Tension
- Feelings of Deep Relaxation
- Improved Mood
- Improved Sleep
- A general sense of Wellbeing

Appointments available in Milton & Chesterton  
Sports Centre, Gilbert Road, Cambridge

\*Massage should not be used in place of conventional medical care. Always consult a GP or other Health professional for medical attention and advice.



## Climbing "Kili" for Meningitis Research

I have lived in Milton all my life, and this year became a student at University of Nottingham, where I took up the challenge of climbing Mount Kilimanjaro for Meningitis Research Foundation. The trek will take place in September for 6 days walking 5-15 hours at a time in climates ranging from tropical jungle to -15°C!

MRF is a very special charity to me, as it can affect anyone at any age, with devastating effects. As a student, my age group is one of the most at risk, as we constantly meet new people and, in doing this, increase our chance of exposure to the illness.

This summer, at the Milton Fayre, I will run a fundraising stall selling cupcakes, a Winner-Takes-All raffle and face painting for all ages, and would love to see you all there! If anyone would like to make a donation, my website is [uk.virginmoneygiving.com/LauraNunnKiliTrek2014](http://uk.virginmoneygiving.com/LauraNunnKiliTrek2014). Thank you!

Laura Nunn

## Coast-to-Coast Cycle Challenge

In memory of Sarah Jane, Jill and Richard Murray are competing in a Coast to Coast Cycle Challenge from Whitehaven to Tynemouth, 12th-14th June. Visit [www.justgiving.com/Jill-Murray1](http://www.justgiving.com/Jill-Murray1) or email [scarysylv@hotmail.co.uk](mailto:scarysylv@hotmail.co.uk) to sponsor them.



Sadly, Sarah passed away on May 22nd 2013. Just 25, she fought a long and courageous battle with dignity and grace and we are all so proud of her.

We are fundraising for John Farnam ICU at Addenbrooke's. Here, Sarah Jane received the best care from the amazing staff from June 2010 to May 2013. Myself, Robbie, Katie and all our family are very grateful to everyone who worked hard to help Sarah get better. This is a very worthy cause and we hope to be able to raise as much money as we can with your support to benefit others being treated in the ICU.

Sylvia Wright

## Nightrider for C3 Centre

In the early hours of 8th June, Steve Campbell will be completing his first ever bike ride challenge called Nightrider. Riding 100km through the streets of London will be a sharp contrast to the Fens where he has been training!

Money raised will be put towards the new C3 centre, Coldhams Lane facility where Steve is the senior pastor. He says, "This is an ambitious project. Over the last 20 years we have built a church that encourages and trains people within and engages with its community. Programmes such as food bank, CAP, Hope House, divorce recovery and debt courses have made significant differences to people."



If you would like to sponsor Steve, go to [my.give.net/nightrider](http://my.give.net/nightrider)

## The Norm 2014



You may have seen Steve Mew of Pryor Close running or cycling around Milton or kayaking on the river. He is training for an 800 mile challenge departing on the 70th Anniversary of D-Day (5th June) in memory of his father: Norman Mew died when Steve was 11 years old. All proceeds will go to the Royal British Legion.

Steve will run, cycle and kayak over 800 miles in 14 days following the WW2 route taken by his father through France, Belgium, Holland and Germany. Amazingly, Steve broke his leg 5 years ago and was told he would never walk again.

The Norm is Steve's tribute not only to the father he lost but to all the ordinary soldiers who were never recognized for their efforts yet still risked their lives. If you'd like to get involved you can sponsor Steve at [www.justgiving.com/thenorm2014](http://www.justgiving.com/thenorm2014) and follow his blog at [www.thenorm2014.com](http://www.thenorm2014.com)

### Matthew Harney

General Building Work  
Painting & Decorating

[matthew.harney@btinternet.com](mailto:matthew.harney@btinternet.com)  
Tel: 01223 696508  
Mob: 07962 398114



travel counsellors With us...it's personal

MILTON VILLAGE TRAVEL AGENT  
MR ELI KARRAM

IATA and ATOL Member  
I can book any holiday you may have seen elsewhere  
Generally more choice and flexibility than available online  
No limit on booking size Business travel UK and abroad  
Everything financially protected, including flights only  
26 years experience No obligation quotations

01223 864260 or 07963 841 679 any time

[eli.karram@travelcounsellors.com](mailto:eli.karram@travelcounsellors.com)  
[www.travelcounsellors.co.uk/eli.karram](http://www.travelcounsellors.co.uk/eli.karram)

2013 awards: Sunday Times / HSBC InternationalTrack 200  
and Sunday Times Profit Track 100



Omega Clean

Cambridge

100% money back guarantee.

Carpet - Upholstery - Rugs

Spotter with every clean. Free!!

01223 864335/07734 711839

Safe - Natural - Cleaning

[www.omegaclean.co.uk](http://www.omegaclean.co.uk)



## Wildlife Notes

I've not been keeping records long enough to say whether Spring has been earlier or later this year. The willows down at the river and the Country Park were beginning to come into leaf, and bats were out of hibernation, in mid-March. However, there was still blackthorn in full flower at the end of March. We saw a hedgehog on 16th March and have one visiting the feeding station in our garden on a regular basis. The blackbirds seem to be enjoying the cat biscuits, dried mealworms and water we put out for the hedgehogs and, much to our amusement, a parent has been training a fledgling to use the hedgehog feeder.

The really promising signs of Spring are when I spot various migratory birds. I was so pleased to see swallows on 14th April, down in their usual spot where the A14 crosses the river. I definitely heard whitethroats down Fen Road on the 22nd and got to see one at the end of April. The common terns on the river made an appearance on the 25th April. Our first swift sighting was on the early May Bank Holiday and they have now been heard screaming over the Country Park: hopefully those in the village who have swift nesting boxes on their houses are seeing some interest. I first saw housemartins on 25th April, and they are now plentiful over the Country Park and hopefully are nesting again on the houses off Humphries Way.

I saw a large family of ducklings in the Country Park just into the second week of April, and a swan sitting on a nest. I have seen one set of ducklings on the river since and there are now (mid-May) many young birds in the Country Park.

My oddest sighting recently was a barn owl at the very late time of 8am near the level crossing on the Fen Road. It had rained heavily overnight and was very damp, gloomy and misty: perhaps he had a very poor night of hunting and was having one last go at getting supper at that late hour? I hope there is a nest somewhere and I wish him or her better hunting in future nights so that any young will prosper.

Heather Coleman

## Milton History Books

The 1935 book, *William Cole of Milton*, about one of Milton's most famous men, is now available in softback for £10, and includes the last 13 years of his life spent at Milton House in Fen Road, which he converted from a 17th century farmhouse in the late 18th century while he was a curate at Waterbeach. There are many photographs of the house and Milton in the early 20th century, and details about the house including the stained glass in all the windows before Cole's death in 1782.



A new paperback book, *Milton through Time, 'From Stone Age to Science Park'* by Derek Booth the Parish Archaeological Warden for Milton has just been published, priced £10.99. The book deals with a review of all the archaeology of Milton in relation to the evolution of the village, people, buildings, farmland, the Science Park and other establishments. The story of fact is told through a fictional dialogue between a tutor and a student providing a human element to the story. There are many sketch maps and colour photos.

To order a copy of either book, contact Derek Booth at [booth30@btinternet.com](mailto:booth30@btinternet.com) or phone 01223 860116.

## Breakthrough in Breast Cancer

We are having a stall at the village fayre again, to raise funds for Breakthrough in Breast Cancer. Please have a 'sort out' and donate any of those unwanted presents, bath products, tins of food, bottles of drink, etc. Please take your donations to Alice at 6 Recreation Close or tel. Karen on 07808 520576 and she will collect them.

Karen Northfield and Alice Hall

## Assistant Parish Clerk Vacancy

Starting Salary: between £8.43-£10.30 per hour dependent on experience (£16,215-£19,817 p.a. full time).

We are looking for someone who is friendly and enjoys working with the public. The post holder will require a high level of IT competence, be organised, efficient and flexible.

Hours will normally be approx. 40 per month. These will be worked in accordance with the demands of the job and will include some evening work and may include weekend work.

Full details and an information pack are available from: Gemma Faulkner, Parish Clerk, Parish Council Office, Coles Road, Milton, Cambridge CB24 6BL. Tel: 01223 861447 or email: [clerk@miltonvillage.org.uk](mailto:clerk@miltonvillage.org.uk)

Closing date for applications: 20 June 2014

### HOWARD'S WAY School of Motoring Manual & Automatic Cars

- Male and Female Driving Instructors
- Pass Plus Courses
- Intensive Courses
- Instructor Training
- Theory & Hazard Perception Confidence / Refresher
- Patient and Friendly
- Top Grade 6
- Motorway Courses

### HOWARD'S WAY WINDOWS

- Window Cleaning by Request
- Milton, Waterbeach, Landbeach
- Pubs, Clubs and Offices

T: 01223 440767 M: 07753 617310  
E: [hcradock@btinternet.com](mailto:hcradock@btinternet.com) [www.h2way.com](http://www.h2way.com)

### Lee Beamiss Carpentry & Building

Tel 01223 440001

Mobile 07815 118339

web site [www.leebeamiss.com](http://www.leebeamiss.com)

email [enquiries@leebeamiss.com](mailto:enquiries@leebeamiss.com)

All your re-upholstery needs  
"COVERED"

### S.PROCTOR UPHOLSTERY

Antique & Modern Domestic & Commercial Foam Cut To Size D.I.Y. Sales

Family Trade Since The 1940's

TEL: 01223 440430

Email: [sproctorupholstery@gmail.com](mailto:sproctorupholstery@gmail.com)

C2 BUTTON END IND EST, HARSTON, CAMBRIDGE, CB22 7GX

## Looking for new players!

Milton Netball club train on a Tuesday evening at the community centre on Coles road, Milton 7.30 -9pm.

We currently have 3 adult teams with varying ability that all play competitive netball in the Cambridgeshire leagues and we welcome players aged 16+ . We have a fab coach that trains us each week and makes training enjoyable for all abilities.



**We are holding two trial sessions for new players on Tuesday 15<sup>th</sup> and Tuesday 22<sup>nd</sup> July - please come and join us. ☺**

Although we play competitive netball we are always smiling win or lose. Come and join us on a Tuesday evening and see what we are about.

If you would like further information then please call 07709790412 or email [Rachelmwells@hotmail.co.uk](mailto:Rachelmwells@hotmail.co.uk).

## Milton Tennis Club News

A new bench was purchased to commemorate Roger Barham's 19 years as Chairman of Milton Tennis Club and a short dedication was held on 23<sup>rd</sup> April with Rosemary Barham and family unveiling the bench.

A ballot for three pairs of Wimbledon tickets was held at the end of April; Peter Rice, Jiny Bradshaw and Martin Coles were the lucky winners.

On Saturday 26<sup>th</sup> April a number of tennis club members enjoyed a fun, foam ball competition run by our tennis coach and won by Jason Bevan.

Upcoming events at the club are Dant Cup 1<sup>st</sup> June, Volleyball evening 18<sup>th</sup> July, Barham Cup 13<sup>th</sup> July, and the Nick Lock Cup, 7<sup>th</sup> September. To see all MTC information including all calendar events - coaching, Business House League matches and dates when courts are used for netball sessions - go to [www.miltontennisclub.co.uk](http://www.miltontennisclub.co.uk)

Sue Griffin, MTC Secretary

## Campod Charity Golf Challenge Day

The 14<sup>th</sup> annual Campod golf day is being held at Ely City Golf Club on Tuesday 22<sup>nd</sup> July to raise funds for vital medical research. Join us for 18 holes, followed by a BBQ lunch and charity raffle. £170 per team of four or £45 per player. To enter please see [www.campod.path.cam.ac.uk](http://www.campod.path.cam.ac.uk) or call Sue Griffin on 01223 333711. Sponsorship opportunities also available.



Milton Cricket Club are hosting the first ever Milton CC Invitational Cup at the Sycamores Recreation ground on Sunday 29<sup>th</sup> June, starting at 11am. Competing will be teams from Willingham, Haddenham, Waterbeach and of course Milton in a Twenty20 format.

There will be a Bar, BBQ and of course, lots of cricket! All spectators welcome, no entrance fee.

Many thanks to our sponsors - The Lion and Lamb - for helping put this on.

## Milton FC News

On 6<sup>th</sup> May the Club's Reserve team played the final match of a long season (over 150 competitive fixtures were played by our 6 Senior teams i.e. 3 Mens Saturday teams, a Sunday Mens team, a Mens Veterans (35+) team and a Ladies team). Whilst no silverware was won this season it is pleasing to report that all teams maintained their current league status with our Sunday team being the highest placed (3<sup>rd</sup> in Division 1a) and also that a number of teenagers, who previously played for Milton Colts, are making good progress in the adult game.

Ahead of the 2014/15 season we would like to make a direct appeal for Help and

Money. We are both one of the oldest and largest clubs in the county. To not only sustain the current number of teams but to develop the club and improve facilities we are seeking the following:-

- . Active Committee Members, Team Managers/Assistants , Qualified Coaches and First Aiders
- . Match day helpers (tasks include preparation of the pitches, help in the club shop, officials hospitality, general administration)
- . Private Donations (with or without public recognition)
- . New Sponsors (Packages available from Match ball sponsors £30, pitch side

banners £250 and kit sponsorship £500 with sponsors printing)

For full information about the club please visit our website [www.miltonfc.org.uk](http://www.miltonfc.org.uk)

If you can help the club in any way please speak to Club Chairman Ray Daniels 07990 602944 or Club Secretary Fraser Confrey 07763 351490 or email the club at [fconfrey@waitrose.com](mailto:fconfrey@waitrose.com)

\*Pre-Season Training starts Tuesday 8<sup>th</sup> July @ The Sycamores Recreation Ground, Milton at 7pm. All present, past and new players welcome\*

Fraser Confrey

# Godden Auto Services Ltd

*Benet Garage, Cambridge Road, Milton, Cambridge CB24 6AW*

## Servicing and repairs to all makes of vehicles

## MOT TESTS WHILE YOU WAIT

Web site

[www.goddenautoservices.co.uk](http://www.goddenautoservices.co.uk)

By appointment only

All major  
credit cards accepted

## Tel: 01223 420380

Opening times: Monday to Friday 8.30am - 5.30pm, Saturday 8.30am - 12.30pm