



[www.mvv.org.uk](http://www.mvv.org.uk)

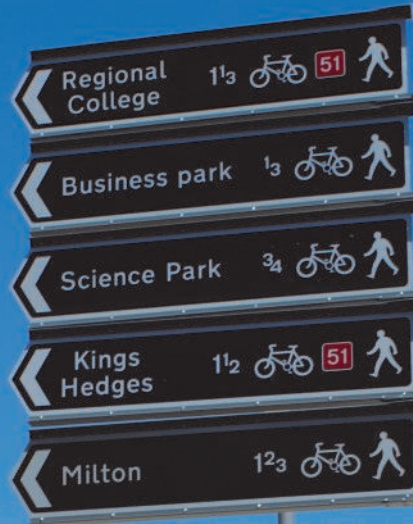
# Milton Village View

Issue No. 128 – June 2017

## In This Issue...

- ▶ New Railway Station Open
- ▶ Gala Days & Garden Parties
- ▶ Mobile Library Day Change
- ▶ New GP for Milton

*And much more!*



Cambridge North Station, Nat Johnson

# Contact Us

Send us your news and photos:

**[mvv@milton.org.uk](mailto:mvv@milton.org.uk)**

1 Knights Way, Milton, CB24 6DE

Deadlines for articles are:

**12th January**

**12th March**

**12th May**

**1st September**

**1st November**

Issues will be published approx.  
2 weeks after the dates above.

## Online Archive

Find back copies of Village View  
(back to April 2011) on our website:

**[www.mvv.org.uk](http://www.mvv.org.uk)**

Printed by Langham Press Ltd.

**Delivered Free  
Circulation 2,000**

#### **Publisher's Notice**

Whilst every effort is made to ensure accuracy the publisher accepts no responsibility for errors or omissions. Views and opinions expressed in the Village View are not necessarily those of the publisher or the editorial staff. The publisher does not accept any responsibility for claims made by advertisers.

## School Summer BBQ

Friday 7<sup>th</sup> July,

6 – 8pm

Milton Primary School  
playing fields



**Great Food/Drink:** BBQ with fresh local burgers and sausages, bar, strawberries and cream

**Great Fun:** Games, tombolas, raffle, entertainment, stalls and much, much more.

### **ALL WELCOME**

Open not only to school families, but also the wider community, so please come and enjoy a nice summer's evening and help raise some much needed funds for our local school.

More details will follow in the June, so watch for posters and other advertising in the village.

If you are interested in donating prizes, setting up a stall or helping at the event, please email [miltonce.msa@gmail.com](mailto:miltonce.msa@gmail.com)



If you use our advertisers, please mention Village View. Thank you to our volunteer distributors.

## June

- Fri 9th** Jolly Brewers **5th Anniversary**, 8pm (p.18)  
**Sun 11th** **Open Farm Sunday**, College of West Anglia, 10am-3pm  
**Sun 11th** Bring & Share **International Meal** for the village, All Saints', 4.30-6pm  
**Sun 11th** **Evensong**, All Saints', 6.30pm  
**Sun 25th** **Parklife** *try new sports for free*, Country Park, 10am-5pm

## July

- All weekends:** **Open Studios**, various locations (p.4)  
**Sat 1st** EACH **Gala Day**, Milton Hall, 11.30am-5pm (p.6)  
**Sat 1st** **Mamma Mia Singalong**, Country Park, 10pm  
**Fri 7th** **MSA BBQ**, Milton Primary School, 6-8pm (p.2)  
**Sat 8th** **Village Garden Party**, White Horse, 12 noon (p.19)  
**Sun 9th** **Family Angling Day**, Country Park, 10am-4pm  
**Sun 9th** **Free Tennis Sessions**, Tennis Courts, 11am-2pm (p.23)  
**Sun 16th** **Cricket 'Invitational Club Day'**, Sycamores rec. ground, 10.30am-late (p.23)



## August

- Weds 16th** **Wind in the Willows** Theatre, Country Park, 3.30pm  
**Sat 26th** **Pictures in the Park: ET**, Country Park, 8.45pm

## September

- Tues 5th** **Coffee, Tea, Cake & Chat**, All Saints', after school drop-off am/pm (p.3)  
**Sun 24th** **Autumn Festival and Produce Show**, Milton Country Park (p.5)  
**Fri 29th** **Macmillan Coffee Morning**, Lion & Lamb, (p.19)

Pub events: see pp.18-19.

Regular events: [www.milton.org.uk/directory.html](http://www.milton.org.uk/directory.html)

## Child Starting School?

- ✓ Is your child starting school?
- ✓ Or have you recently moved to Milton?
- ✓ Meet or catch up with other parents
- ✓ All Milton Primary School parents welcome

### Coffee, Tea, Cake and Chat

Tues 5th Sept, after am & pm School Drop-off  
 All Saints Church Hall, Milton



## Cambridge Open Studios 2017

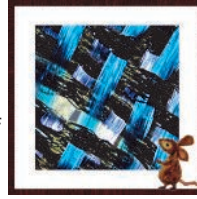
The beginning of July heralds the start of Open Studio season and this year we have a record nine artists taking part in Milton.

Open the first two weekends is silver wire artist and painter Rhiannon Thomas (no relation to the other three). She can be found at 14 The Sycamores.



On the second and third weekends Cheryl Bird and Linda Bartlett will be showing their beautiful jewellery. Their work can be found in the studio in the garden of 6 Cambridge Road.

At 31 Cherry Close you will find Richard Morgan and Marie Georghiou showing their striking mosaics and delicate animal sculptures.



It's a family affair in Hall End, off Fen Road, with Chris, Jane and Louise Thomas showing photographs taken through a microscope, patchwork pieces and illustrations.

Also in Hall End is professional printmaker Alison Hullyer with her prints of local scenes, cards and gifts.



All their studios are open to the public on the weekends stated (free entry, look for the yellow flags), from 11am until 6pm, or at other times by appointment.

You can pick up free guides covering all 300 local artists from the Post Office, Community Centre and many other places. To find out more see:

[www.camopenstudios.co.uk](http://www.camopenstudios.co.uk)

[www.hullyer.co.uk](http://www.hullyer.co.uk)

[www.louisespatchworkpatch.co.uk](http://www.louisespatchworkpatch.co.uk)

[www.miltoncontact.co.uk](http://www.miltoncontact.co.uk)

[www.divinedecadencejewellery.co.uk](http://www.divinedecadencejewellery.co.uk)

[www.rhiannonthomas.co.uk](http://www.rhiannonthomas.co.uk)

[twitter.com/HestiaMosaics](https://twitter.com/HestiaMosaics)

**PAINTING  
DECORATING  
GLAZING**



**Mobile**  
07860 453533  
**Phone:**  
01223 700800  
(local resident)

**B.J.LEONARD**

*Stephanie's*

**MILTON'S UNISEX HAIRDRESSERS**

Professional Hairstyling for Men and Women

**Telephone: 01223 420526**

*Discount for all new clients*

49 Cambridge Road, Milton, Cambridge, CB24 6AW

## What Could You Enter in the Produce Show?



The Milton Produce Show is on Sunday the 24th of September this year, with categories covering vegetables, fruit, flowers and plants, home produce, baking, creative food and handicrafts, plus a category for children's entries.

As always, the show is intended to be a fun village event with plenty of prizes on offer, so don't be shy about entering. Put in your home-grown fruit and veg, jams, cakes, knitting, origami, edible hats (I'm not making that one up; you really can), or any of the other wide range of entries we accept. See the website ([www.miltoncountrypark.org/produceshow](http://www.miltoncountrypark.org/produceshow)) or email [produceshow@milton.org.uk](mailto:produceshow@milton.org.uk) for more details.

*Stephanie Clarke*

## Milton Local History Group

We are an informal group; just pay £2 at the door, first Tuesday of the month in the Community Centre Lounge. We have run a series of events and talks from both Milton residents and invited speakers. I have recorded as many of the talks/events as possible and make them available free online via the Internet Archive – search for “MHLG” on [archive.org](http://archive.org).

MHLG is advertised around the village, and also has a mailing list – to be added to the list, please email to [chris@miltoncontact.com](mailto:chris@miltoncontact.com). Next meetings: 6th June and 4th July, starting at the Community Centre Lounge, 7.30pm

Depending on the weather, we will either have 1. A walk around Milton, with Clive Milner, relating old photos of the village to the present or 2. Telling us about your ancestors (or another person who interests you), following on from the introduction to researching history from Robert Parker in May. We hope to see you at a future talk!

*Chris Thomas and the MLHG*



### HEATING & PLUMBING SERVICES LTD

- GAS SAFE REGISTERED
- Boiler Installation - Gas & Oil
- Complete Bathroom Design and Installation
- Landlords Certificates
- Power Flush
- Tiling
- Under Floor Heating
- Gas Boiler Servicing
- Free Estimates

*\* Covering Cambridge for 30 years \**



**Ph: 01223 242544**  
Email: [malcolm.potts@btconnect.com](mailto:malcolm.potts@btconnect.com)  
Unit 8, Ronald Ralph Court, Wadlows Road,  
Cambridge, CB5 8PX



2163

## J.P.Morley Roofing

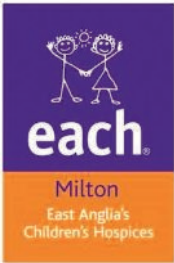
Est. 1985



## All types of roofing Flat roof specialist

34 Fen Road, Milton  
Home: 01223 863259  
Mobile: 07941 198771

[josephmorley@btinternet.com](mailto:josephmorley@btinternet.com)



**EACH Milton Gala Day supported by Cambridge Round Table**  
**Saturday 1<sup>st</sup> July • 11:30am – 5:00pm**  
**Milton Hall, Ely Road, Milton**  
**Adults £3 • Child (11-18 yrs) £1 • Under 10's Free**



Listen to great music from some local bands; watch great entertainment from cheerleaders to samba dancers. We've even conjured up a magician. Meet up with family and friends browse and buy from a variety of stallholders. Sit and chill whilst we grill the hottest of hot dogs and best burgers on the BBQ accompanied by a licensed bar. Think you could be the next Robin Hood? Then come and try your hand at a spot of archery. There will also be a raffle with fantastic prizes on offer, a fire engine and classic cars and so much more to see. We'll also be serving up delicious cream tea. There is something to entertain everyone. Come along; you won't be disappointed!



If you would like to volunteer on the day please contact our fundraising team: 01223 204916.

Keep visiting [www.each.org.uk](http://www.each.org.uk) for even more great additions to our gala day.



## New Mobile Library Days

2nd Friday of the month:

- Post Office 9.45-10.45am
- The Rowans 10.50-11.15am

4th Friday of the month:

- Post Office 2.25-3.25pm
- Community Centre 3.30-4.30pm



- Servicing, Installation and Repairs
- Gas Boilers, Fires, Cookers and Central Heating Systems
- Powerflush Cleansing of Central Heating Systems
- Energy Efficiency upgrades
- Landlord Gas Safety Checks and Certificates

Contact - Eddie Kikas  
 Your Local Gas Specialist

Tel/Fax: 01223 861810 Mobile: 07831 228181

Email: [miltongas@btinternet.com](mailto:miltongas@btinternet.com)  
[www.miltongas.co.uk](http://www.miltongas.co.uk)



Mon 9.30am - Mixed Ability Mat Class (MCC)  
 Mon 10.30am - Mixed Ability Mat Class (MCC)

### NEW TIMES FOR MILTON SCHOOL CLASSES

Tues 6.30pm - Intermediate Mat Class (Sch)  
 Tues 8pm - Mixed Ability Mat Class (Sch)  
 Fri 9.15am - Mixed Ability Mat Class (CBC)  
 Fri 10.30am - Mixed Ability Mat Class (LVH)

Contact Liz on 07768 155278  
 or [liz.dolman@lovepilates.co.uk](mailto:liz.dolman@lovepilates.co.uk)  
 NVQ Level 3 Pilates Instructor

Visit [www.lovepilates.co.uk](http://www.lovepilates.co.uk)  
 for further information on classes & venues

## Community Café

I remember one day in the Community Cafe, when my neighbour on the table turned to me and said "You know, this makes a big difference!" I asked why: two hours once a month seemed such a little thing. It was something to look forward to, he replied, something different, meeting or even just being with other people, a change from the monotony of four walls and the afternoon TV.

We would like to make an even bigger difference – currently about 16 people come along regularly. Feel free to drop in on the fourth Tuesday of the month, 2:30 – 4:30 pm, whether you are just back from a walk in the park, are at the playground nearby with your young child, or just want a change from your own four walls.

You are Welcome! £2 gets you a tea/coffee/squash (plus refills) and a piece of cake or a biscuit or two. Our next events are on 23rd May, 27th June and 24th July.

*Chris Thomas, Tel: 440024*



**Wild Thyme & Embers** are launching three new outdoor learning experiences for children and their families. Held in the Wild Place inside Milton Country Park, the sessions aim to inspire people

to spend more time outside and reconnect with nature.

[www.wildthymeandembers.co.uk](http://www.wildthymeandembers.co.uk)

Sessions will be Tuesdays and Thursdays for toddlers and families with an additional weekend family bushcraft course running alongside.

## Final 'Milton Ladies'

Milton Ladies met on the 19th May, on the 50th anniversary of the first ever Milton Ladies meeting.

Sadly, this was also the final Milton Ladies evening. A group will still meet on the third Friday of the month in the Church Hall, but in the afternoon instead, from 2-4pm, for tea and a chat.

*Sue Nunn*

## Harmony

### Hair and Beauty Salon

Expert hair stylists for Men, Women and Children.

Beauty therapists offering a wide range of treatments.

Chiropody (HCPC Registered). Sports therapy and massage (See website for more details)

Gift vouchers available

6 High Street, Milton, Cambridge, CB24 6AJ

[www.harmonysalon.co.uk](http://www.harmonysalon.co.uk)

Call **01223 863636** to book an appointment

Open 9 - Late Mon – Fri

9 - 2pm Sat



## New 'Cambridge North' Railway Station

Cambridge North station opened on Sun 21st May and is now the closest railway station to Milton. A new cycleway links the station to Milton Road and there is a large undercover bike park to park 1000 bikes. The station site is large, with a bus interchange and 450 car-parking spaces.



Great Northern trains to and from Kings Cross are hourly during the day, with some additional trains in the morning peak. Similarly there is a roughly hourly Greater Anglia service to Liverpool street.

Heading north, there are frequent services to Ely, but almost all services going north of Ely stop at Waterbeach

instead of Cambridge North, meaning that journeys for stations to Kings Lynn will generally require a change at Ely. Only a handful of early morning and late evening trains stop at both Cambridge North and Waterbeach.

From 2019, trains on Greater Anglia's new route between Norwich and Stansted Airport will also call here.

Bus access from Milton is commuter focussed, with a targeted morning and evening service. The Citi 2 runs from Milton to Cambridge North in the morning, with the first bus at Landbeach Road at 06:07, then every 20 minutes until 08:07. Returning in the evening there is a bus every 20 minutes from the new station to Milton between 17:56 and 19:36, along with three late night buses at 22:24, 22:54 and 23:24.

*Nat Johnson*

### Matthew Harney Ltd

Tel 07962398114

[www.matthewharney.co.uk](http://www.matthewharney.co.uk)

Milton resident

**General building work &  
property maintenance**

**Including fencing, decking,  
pergolas and the supply, design  
and installation of sheds and  
garden buildings**



## New Playground: Funding Help Needed

Project to build a new play area on Coles Road Recreation Ground in jeopardy

The Playground Working Group have been working hard to consult and plan for a new play area to be built on Coles Road Recreation Ground but now we really need your help to fill a funding gap of around £14,000 in any of the following ways:

- helping at a fundraising event
- private donation
- company donation
- help to secure additional grants

The total cost of the new play area is £100,000. We believe we can secure £83,000 through grants and Parish Council support and a further £3,000 has been pledged in local donations. If you can offer any help please contact the Parish Office on 01223 861447 or email the Clerk on [clerk@miltonvillage.org.uk](mailto:clerk@miltonvillage.org.uk)

Without sufficient funds this project will not go ahead.

*Playground Working Group - Milton Village*

## Local Election Results

Congratulations to Anna Bradnam (Liberal Democrat) who was elected our County Councillor in the recent elections. Anna got 46.4% of the vote.

The Conservative party have 9 seats on the council, with 39.97% of the vote, and the Liberal Democrats have 6 seats, with 39.80% of the vote.

We also have the first elected Mayor of Cambridgeshire. James Palmer (Conservative) won with 56.9% of the vote.

## AMBASSADOR LODGE BED & BREAKFAST

37 High Street, Milton, CB24 6DF  
(next to the Waggon & Horses pub)

Friendly, family-run B&B

Contact: Phil or Fizz Turner  
Tel: 01223 860168

[www.ambassadorlodge.co.uk](http://www.ambassadorlodge.co.uk)  
e-mail: [ambassadorlodge@yahoo.co.uk](mailto:ambassadorlodge@yahoo.co.uk)



*For all your Concrete  
And Wooden Garden Products*

Paving, Edging, Ornaments, Bird Feeders, Planters, Trellis, Nest Boxes, Pot Hangers, Picnic Benches and much more

**A limited range of Pot Plants  
for your Garden, Planters, and Pot Hangers**

**Tel: 01223 420669**

[www.phoenixtrust.org](http://www.phoenixtrust.org) Unit 8, Milton Trading Estate

*Supported work experience for people with learning difficulties*

## SILVER SERVICE TAXI

*Licensed Taxi Service,  
Reliable, Local & Friendly*

**Ian May**

**07989 197816**



Email: [silverservicetaxi@gmail.com](mailto:silverservicetaxi@gmail.com)

**Multi-Seater 1 to 8 passengers  
Airport & Group Bookings welcome  
Specials Needs & A Speciality**

[www.silverservicetaxi.co.uk](http://www.silverservicetaxi.co.uk)

# From the Archives

*25 Years Ago: June '92*

*10 Yrs Ago: June '07*

## OUTDOOR BOWLS CLUB

On Friday 1 May 1992 the bowling green at Milton was open for business, and many club members turned out to roll their “woods” over the new surface.

### New Village Sign

The original sign was to be a dovecote with portraits of men who had been very involved in the village. There were objections that only men were to be portrayed. The Parish Council then asked for ideas. It was suggested that Baitsbite Lock could be the basis of the sign depicting the old along with the new. John Waterson a village artist was commissioned to paint the sign and Len Sandford volunteered his carpentry skills, finally resulting in the sign being erected on March 28th this year.



## Retirement Village Proposals for old Electricity Board Site

**Village Exhibition planned**

Urban Renaissance Villages (URV) and its investment partner, Helical Bar, have recently acquired the former Milton Transmitter Station, Ely Road, Milton. Their proposals for the site are at a very early stage of preparation but will involve a retirement village comprising of between 80 and 120 units.

*Above right: Front and back of the sign in 2017, Mary-Ann Johnson*

# Flat Roofing Specialists

**INSURANCE BACKED GUARANTEES FOR ALL NEW ROOFS**



NO HIDDEN COSTS

PUNCTUALITY

PROFESSIONALISM

COMMUNICATION

01223 782382



info@roofing-cambridge.co.uk  
www.roofing-cambridge.co.uk



## New GP for Milton

It is with great pleasure that the surgery announces the appointment of Dr Uju Mokah who will start on the first of August this year. Dr Mokah will replace Dr Steward as a full time partner in the practice.

Nigerian-born Dr Mokah obtained her medical degree at University of Ilorin. She did her foundation doctor training in North Lincolnshire and Yorkshire, while her GP training was here in Cambridgeshire. Dr Mokah has keen interests in women's health, diabetes, child's health and joint injections. She is married with three children; cooking is one of her hobbies and she likes to try out new recipes. She is very enthusiastic about her vocation as a GP and is looking forward to starting in August.

Dr Steward reflects on her 28 years with the practice:

*"I started when the surgery was in the private home of Dr Eddie Draper. The appointment system was turn up and be seen in turn. If you got there early you were better placed in the waiting room and often people who brought their children made their breakfast and got them ready for school. One way of getting seen before your turn was to engineer a dramatic collapse shortly after arrival, this happened regularly with one elderly and resourceful client.*

*The waiting room then was tiny and the nurses practiced from the scullery. There was a branch surgery in a receptionist's kitchen in Fen Ditton and the consultations were often enjoyed by the waiting patients unless you kept your voice down. It didn't matter because most of the neighbours already knew the problems and the solutions. We provided 24 hour care 7 days a week between the two of us. Continuity of care was assumed and an uncomplicated heart attack stayed at home.*

*Dr Draper left for the USA in 1993 and new premises and colleagues had to be found. I had the good fortune to employ the ever youthful and dynamic Dr Cain Hunt. The generous help of the Parish council and the unconditional and selfless support of Roger Welham at the FPC allowed us to acquire the site near the community centre and build our current surgery. At the time we both had small children and the annex room off the main waiting room was built as a weekend consultation room as we worked on our own. Shortly after this the young and learned Dr Tara Scott came to join us. Since then and for the last 18 years we have had the pleasure of working together and with many other wonderful members of staff, who have given so much time and care to others.*

*Milton and its surrounding villages has a diverse and cosmopolitan population ranging from rural to urban with people who have had and those who expect to have a huge variety of life experiences. My clinical experience has been extremely varied, occasionally very distressing but sometimes dramatic and uplifting.*

*Through all of this it has been the greatest privilege to have been a part of so many wonderful people's lives and families. I am very grateful for the support of the community during my working career in Milton and wish you all well in the future."*

Dr Rebecca Steward

*Catherine Walker**Rebecca Ostler**Rebecca Ostler**Heather Coleman*

## Your Photos Could Be Here!

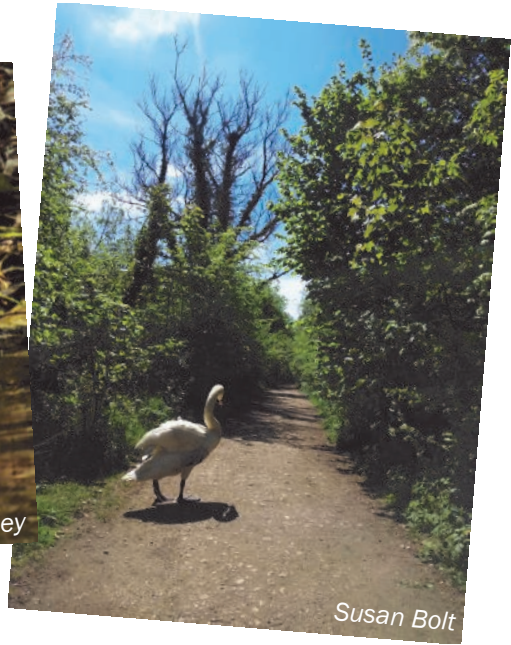
Photos taken in and around Milton always welcome – of places, people, events or just something that strikes you as beautiful. No lower or upper age limit!

Send them to [mvv@milton.org.uk](mailto:mvv@milton.org.uk), and we'll include as many as we can.



Paul Stepney

Chris Thomas, "Lava in Hall End"



Susan Bolt

## Feeding Hedgehogs

Hedgehogs are a popular subject this issue—we've been sent photos of two different hedgehog feeding stations in the village.

Sally Milligan (right) cut and taped a 5" hole in an old box as described at [thehedgehog.co.uk](http://thehedgehog.co.uk).

Heather Coleman (below left, see also *Wildlife Notes*, p.17) shows us the



TV feed of her feeding station from the side, made of bricks and a thin board. Can you see the spiky bottom?

Hedgehogs enjoy eating dry or tinned cat and dog food, cheese and peanuts. Did you know you can also buy special hedgehog food at pet shops?

Mary-Ann Johnson



## School Lunchtime Supervisor Required

Milton CE Primary School,  
Humphries Way, Milton, CB24 6DL.  
Tel: 01223 508783

Email: [office@milton.cambs.sch.uk](mailto:office@milton.cambs.sch.uk)



The successful candidate(s) will:

- ✓ contribute to making lunchtimes safe, positive and productive for our children
- ✓ be able to make good relationships with children and adults alike
- ✓ have high expectations for pupils' behaviour
- ✓ be well organised and able to work well as part of a team
- ✓ respond positively and cheerfully to the variety of tasks
- ✓ be in sympathy with our school's Christian ethos

We can offer:

- ✓ friendly children
- ✓ a welcoming supportive team
- ✓ training for the task

We have an excellent staff team and are a very popular and successful Church of England village primary school. Days of the week negotiable. Hours of work will be 12:15-1:30pm term time only. Salary Scale 1C Point 8: £7.19. Please contact the school office to request an application pack or visit our website. Visits welcome.

The Governing Body is committed to safeguarding and promoting the welfare of children and young people and expects all staff and volunteers to share this commitment. The successful candidate will undertake an enhanced DBS check.

## C H LUMB

(BUILDERS)

DRAINAGE - GUTTERING  
UPVC FACIAS & SOFFITS  
PATIOS & FENCING  
ALTERATIONS

01223 354402

Mobile 07762026290

Looking to learn  
or refresh your  
French?



**Exams, Business, Leisure...**

*Professional, qualified and friendly native speaker offers:*

- Local tailored private tuition
- Group / family classes
- Conversation
- In-company options
- Exam preparation
- Help with all things French

All levels / ages absolutely welcome

**Call or text me: 07792 974035**

**E-mail me: [ameliefalc@gmail.com](mailto:ameliefalc@gmail.com)**

**Website: [frenchalacarte.eu](http://frenchalacarte.eu)**



## Cambridge Writers

Cambridge Writers consists of a number of groups that meet monthly. Reading of work is followed by wider discussion and constructive criticism. You can attend two meetings of any reading group free of charge. Joining Cambridge Writers allows you to attend all the reading groups. The £20 annual fee also entitles you to attend the regular general meetings, which feature presentations by established authors and key figures from the world of publishing, and workshop sessions. A monthly newsletter updates members on literary events in the area, national competitions, writing courses and there is an annual short story competition exclusively for members. Further details are available at [www.cambridgewriters.net](http://www.cambridgewriters.net)

Ian Osler

## Spot a Spotted Flycatcher!

Do you have flycatchers in your garden? Please let the Bird Club know. Last year many Cambridgeshire communities helped with a county-wide survey of Spotted Flycatchers.

These attractive little migrant birds (*left*) are summer visitors to village gardens and churchyards. Although they breed here, they spend ten months of the year travelling between here and their wintering grounds in Southern Africa. This is an dangerous journey for them and sadly they are in deep decline. Widespread losses amounted to a 50% decline during 1995-2010, continuing an 90% decline since 1970. Only some fifty pairs remain breeding in Cambridgeshire, so it's now quite a rare bird, but most rural villages still have a pair or two.

The Cambridgeshire Bird Club is again running a survey to find and monitor nesting pairs, and it is almost certain that there are additional pairs in our villages of which we are not aware. Please email [spofl@cambridgebirdclub.org.uk](mailto:spofl@cambridgebirdclub.org.uk) or phone 01223 263962 with any info, including records of single birds, anytime between now and September.

See also [www.cambridgebirdclub.org.uk/spofl2017.html](http://www.cambridgebirdclub.org.uk/spofl2017.html) for details of the project and how to send in your records.



Andrew Evans



"Just look at what some of our satisfied clients have to say"

"I would thoroughly recommend. Fast, friendly and efficient service with a great result. Like having a new carpet."

Mrs G from Cambridge

"The carpets look and feel like new. I wouldn't hesitate to recommend your company to anyone."

P McDonald, Cambridge

  
Omega Clean  
Cambridge

  
NCCA  
The National Carpet Cleaning Association  
membership number 2103

# £20 OFF

WITH THIS VOUCHER

on any of these services

- Upholstery Cleaning • Leather Cleaning
- Rug Cleaning • Carpet Cleaning

"100% cast iron money back promise"

"If you are not happy with our work we will re-clean and if you are still not happy we will refund every penny... that's a promise"

Call NOW to get your £20 OFF on 01223 864335 [www.omegaclean.co.uk](http://www.omegaclean.co.uk)

## Milton MU

Many thanks to all those of you who supported our Lent lunches. We certainly had some stimulating talks that gave us much food for thought. The lunches were tasty and the conversations over the tables were lively. Approximately £400 was raised.



The start of May saw us hosting the annual deanery service. We were joined by MU members from Willingham, Impington and Stapleford. Thanks to our Rector David Chamberlin for a thoughtful service of Holy Communion and other church members for the music and the sound desk.

Please join us at our next meeting on 6<sup>th</sup> June for a talk by Rita Evans about work done by MU members at Birmingham Prison and Swinfen Hall, and an update from Milton member Beryl Waterson about MU work at Littlehey Prison.

## Country Park Update

Over the past six months we've been consulting with visitors and local children on how they would like to see our **playgrounds** improved. This consultation has helped inform an exciting new design which we expect to unveil in June! We have local funding opportunities but cannot make these improvements without the support of our visitors. Outdoor play helps make the park a great resource for our community and we hope to create something to enjoy for years to come.

To find out more and pledge your support please visit: [www.miltoncountrypark.org/playground](http://www.miltoncountrypark.org/playground). You can also donate to Milton Country Park's playground fund by texting **MCPK01 £10** or **MCPK01 £5** to 70070.

The summer programme is now in full swing. Booking for **paddle boarding** sessions is available on our website. You can also enjoy the lake with our **open water swimming** sessions, take the kids to our **visiting outdoor theatres** or enjoy a film under the stars with our **pop up cinema** events! **Parklife** will be returning on June 24<sup>th</sup> and is a great opportunity to try a new sport or activity. Information about all these activities and events can be found at: [www.miltoncountrypark.org](http://www.miltoncountrypark.org).

[mcp@cambridgesportlakes.org.uk](mailto:mcp@cambridgesportlakes.org.uk)



**J Bowles  
Electrical**

RESIDENTIAL & COMMERCIAL  
ELECTRICIAN BASED IN MILTON

Call John on: 07725 351582

[www.jbowleselectrical.co.uk](http://www.jbowleselectrical.co.uk)

[info@jbowleselectrical.co.uk](mailto:info@jbowleselectrical.co.uk)

**R.B. Electrical LTD**  
**N.I.C. Registered**

**Your Milton Domestic  
& Industrial Specialists**  
**25 Yrs Experience**

**Tel. 365200**



## Wildlife Notes

I'm in somewhat of a quandary what to highlight this edition, as there is so much going on at this time of year. Despite the cold start to spring, I've seen many swallows by the river as I travel to into town. I've seen at least four going into the structure of the A14 bridge, where it's known they nest. If you stand under the bridge, you can see there are pipes and expansion joints. They have managed to find spaces high up, beyond my view in dark crevices, where they rear their young. A convenient spot, as there's a ready laid-out buffet of insects flying over the river below, as I note every time I cycle along there at dusk risking eyefuls of insects. The terns that fish the river are also back, and I've heard and seen whitethroats along the Fen Road.

I'm so glad we have a camera with microphone pointing at the hedgehog feeding station (see photo on p.13), along with a movement alarm so we know when there's some action to watch. I'm almost thinking that someone is releasing rescued hedgehogs, either in the Country Park or somewhere else in the Fen Road area. Several look as if someone has attempted to paint different marks on them, presumably in the hope of seeing them again? Either that, or there's someone in the area who has been painting a fence or wall in a pale colour with very disappointing results!

I've had much excitement; not just one spiky individual and the sound of munching, but two hedgehogs circling each other, with what I can only describe as loud huffing and puffing noises. Various sources seem to indicate that such noises are connected with competition between males or when a male is trying to impress a female. A couple of times a third has rushed in, and rammed one of the other two. I can only surmise that my feeding station has become the Milton "nightclub" for hedgehogs, a place where you come to try to pick up a mate! My conclusions are that the one being circled is a female, an amorous male paying particular attention to her. Is the interloper another male, also trying his luck? As we've found a hog in one of the hog houses in our garden. Hopefully we've provided appropriate habitat for a nest, should one of these males get lucky!

Stop Press: look out for a black squirrel at the northern end of the Country Park.

*Heather Coleman*

 *With us...it's personal*

**MILTON VILLAGE TRAVEL AGENT  
MR ELI KARRAM**

IATA and ATOL Member  
I can book any holiday you may have seen elsewhere  
Generally more choice and flexibility than available online  
No limit on booking size Business travel UK and abroad  
Everything financially protected, including flights only  
29 years' experience No obligation quotations

**01223 855290 or 07963 841 679 any time**

[eli.karram@travelcounsellors.com](mailto:eli.karram@travelcounsellors.com)  
[www.travelcounsellors.co.uk/eli.karram](http://www.travelcounsellors.co.uk/eli.karram)

2014 awards: Queen's Award for Enterprise



Growing your own fruit and vegetables couldn't be easier with a straw bale garden.

 Low Maintenance
  Educational
  Space Efficient

**www.mystrawgarden.co.uk**  
07956 857651 info@mystrawgarden.co.uk

# Jolly Brewers

Tel: 01223 863895

[www.jollybrewersmilton.co.uk](http://www.jollybrewersmilton.co.uk)

The new managers Julie & Ken have been at the Jolly Brewers for nearly four months now and have no plans to leave: so the Jolly Brewers is no longer up for sale.

**Restaurant:** Come and try our GLUTEN FREE MENU and our new summer menu from May 30<sup>th</sup>. Open Tuesday to Saturday noon–2pm and 6–9pm. Sunday Roasts from noon–3pm. Sunday evening 6–9pm (Pub Grub Menu). Ever changing Specials Boards.

**Bar:** Open from noon every day. Real Ales and Cider, including Cromwell and Thatcher's Ciders, Elgood's Cambridge, Milton Brewery, Greene King IPA and 2 Guest Beers.

**Garden:** Relax in the beautiful front garden, with more seating to the rear of the pub with the Children's Play Fort and ample parking.

**Accommodation:** Friends or family coming to visit? Book one of our 4 en-suite B&B rooms.

**5<sup>th</sup> Birthday Bash!!** 9<sup>th</sup> June from 8pm. DJ Steve will be providing the tunes from his fantastic disco. We will be providing the free buffet. Thanks to you all for your support!

Please be advised that the restaurant will not be open on the evening of the Birthday Bash.

**Sunday 18<sup>th</sup> June - Father's Day:** – enjoy Sunday Lunch and get a free pint for Dad!

## HOWARD'S WAY School of Motoring

### Manual & Automatic Cars

- Male and Female Driving Instructors
- Pass Plus Courses
- Intensive Courses
- Instructor Training
- Theory & Hazard Perception Confidence / Refresher
- Patient and Friendly
- Top Grade 6
- Motorway Courses

### HOWARD'S WAY WINDOWS

- Window Cleaning by Request
- Milton, Waterbeach, Landbeach
- Pubs, Clubs and Offices

T: 01223 440767 M: 07753 617310  
E: [howardcradock@gmail.com](mailto:howardcradock@gmail.com) [www.h2way.com](http://www.h2way.com)

## PHYSIOTHERAPY

Treatment for sports injuries, back and neck pain, joint problems etc.

**Liz Cradock** MCSP, MICT  
Chartered Physiotherapist and  
Reflexologist, HCPC registered

*Recognised by major medical insurance companies*

Treatments at:

'Wellbeing at 17', 17 High Street,  
Waterbeach CB25 9JU

Tel: 01223 860928 Mob: 07714 052389  
Email: [liz.cradock.physio@gmail.com](mailto:liz.cradock.physio@gmail.com)

All your re-upholstery needs  
"COVERED"

## S.PROCTOR UPHOLSTERY LTD.

Antique & Modern      Foam Cut To Size  
Domestic & Commercial      D.I.Y. Sales

Family Trade Since The 1940's

**TEL: 01223 440430**

Email: [sproctorupholstery@gmail.com](mailto:sproctorupholstery@gmail.com)

C2 BUTTON END IND EST, HARSTON, CAMBRIDGE, CB22 7GX

## GJK Accountancy Limited

Accountancy services  
annual and monthly accounts  
bookkeeping  
VAT and tax returns  
Company formations

[griffith.kinsman@ntlworld.com](mailto:griffith.kinsman@ntlworld.com)  
30 The Rowans, Milton, CB24 6YU  
Mobile 07710 503 148

## Lion and Lamb

Tel: 01223 860202  
[www.lion-lamb.co.uk](http://www.lion-lamb.co.uk)

It's great to see you enjoying the garden – and the children so happy in the Pirates Lagoon! Our Bouncy Castle will be available every day throughout the school holidays – providing the weather is suitable! We open daily from 10am so you can enjoy breakfast or savour a fresh Barista coffee with the papers.

We strive to place ourselves in the heart of our community and like to help local groups, clubs and charities with fundraising. We are delighted that Chris (right) & Terrie Drummond have reached a milestone in their fundraising for Alzheimer's Research UK: raising over £20,000. Massive congratulations to you both!

**EACH Firewalk:** 15<sup>th</sup> September from 6pm. We dare you... to walk on fire! Full details can be found on the EACH website.

**Macmillan World's Biggest Coffee Morning:** 29<sup>th</sup> September, bigger than ever this year, with our craft and gifts market too!

**So 80's... for Prostate Cancer Care:** 29<sup>th</sup> September from 9pm – music extravaganza with live band So 80's! You won't want to miss them, and dress to impress – 80's style!

**Fathers Day on Sunday 18<sup>th</sup> June** is always busy and we take bookings for the garden tables and inside tables: just call.

**Ladies Dinner Club:** 27<sup>th</sup> June summer cocktails with supper. 26<sup>th</sup> September late summer BBQ.

**Psychic Supper:** 21<sup>st</sup> June, 17<sup>th</sup> July, 13<sup>th</sup> September - please call to buy a ticket.

**Ladies Day - Boogie Nights:** 13<sup>th</sup> July - join us at the pub after Newmarket Ladies Day at the races for a good Old School DISCO 7-11pm

**Milton Country Park Autumn Festival:** 24<sup>th</sup> September – we will be providing refreshments and look forward to seeing you at the bar!

*We look forward to welcoming you.... Lawrence & Sally*



## White Horse

Tel: 01223 860327  
[www.facebook.com/whitehorsemilton](https://www.facebook.com/whitehorsemilton)

**Garden Party Saturday 8<sup>th</sup> July from noon. Free Entry**

Free Quiz night: Thursdays from 9pm

Karaoke: first Friday of month from 9pm ★ **Split Whiskers:** 21<sup>st</sup> July

**Beer and Cider festival: 5<sup>th</sup>-10<sup>th</sup> July**

We are proud to continue as a community pub, published in the Good Camra Beer Guide. We have six real ale pumps with a good selection of wines, ciders and lager.

There are Daily Chef Specials with a menu to accommodate everyone: Chefs pie and Thai dishes are a hot favourite. Home cooked food, catering for special diets & allergies. Best to book for Sundays, the Kitchen continues to be open all day on Sundays. Book early for Father's Day: Sunday 18<sup>th</sup> June

Our games room continues to be popular with our bar billiards table, pool table and dartboard. There are two very good ladies darts teams and a bar billiards team.

Look forward in seeing you all soon.

*Ava, Alan, Adam, Shaun, Gemma, Nikki, Tegan, Daro, Jamie, Lucy and Will*



Louise qualified as a dog groomer at the College of West Anglia and has been grooming at a local parlour for the last 4 years.

She has vast experience with most breeds of dogs.

Call today for an appointment on

**01954 252869**

67 Histon Road  
Cottenham  
Cambridge  
CB24 8UF  
[www.wagglebumz.co.uk](http://www.wagglebumz.co.uk)

Give your dog a treat and book today



## Landbeach & Milton Baptist Church

All are welcome to our small but friendly fellowship. Further details from Maureen Clark, tel 01954 250118

## Sunday Services

10.30am Family Service  
6pm Evening Worship  
(4th Sunday @ Girton)

## New Apostolic Church

High Street, Milton,  
CB24 6AJ

Sunday Service @ 10.30am

All welcome

## EMPLOYMENT OR FAMILY PROBLEMS?

\*Settlement Agreements\*Unfair Dismissal\*

\*Discrimination\*Breach of Contract\*

\*Divorce\*Children Disputes\*

\*Financial Settlements\*Separation Agreements\*

**FREE INITIAL ADVICE**

**S**SMITH  
**M**MAY  
**S**SOLICITORS LLP

Barnwell House, Barnwell Drive,  
Cambridge CB5 8UU

**BRIDGET GILTINANE – Family Lawyer**

[bridget.giltinane@smslaw.co.uk](mailto:bridget.giltinane@smslaw.co.uk)

**JOANNE MAY – Employment Solicitor**

[joanne.may@smslaw.co.uk](mailto:joanne.may@smslaw.co.uk)

**CALL 01223 415372**

**FREE PARKING**

[www.smslaw.co.uk](http://www.smslaw.co.uk)

## Sunday services

**The Saints MILTON**  
Church at the heart of the community

## Midweek groups & events

### 8am Holy Communion

A quiet, reflective way to start the day.

### 10.30am Morning Worship with Children's Groups

Caters for the whole church, ages 0-100+. Refreshments served.

### 6.30pm Evening Prayer

Said service with short reflection

Little Rainbows Toddler Group, Parents & Under 1s, Lunch Club, Mothers' Union, Stitchers' Club, Reading Group ...

For full details of all these and more please visit:

[allsaintsmilton.org.uk](http://allsaintsmilton.org.uk)

## Milton School Chess News

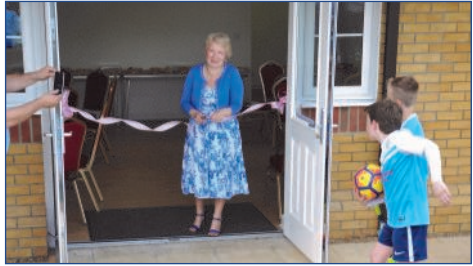
The Milton chess team have performed very well in finishing 7th in the Cambridgeshire Schools Chess League. Full results and table may be found on the Cambridge Schools Chess league website at [www.cambridgechess.co.uk](http://www.cambridgechess.co.uk). Seven Milton players competed in a field of 260 children in the Megafinal (regional tournament for school age group champions). Jian Zhou Mei was the best performer in the tournament, winning all 6 matches to become the Boys U9 champion.



*Jian Zhou Mei with the Boys Under 9 trophy*  
John Williams did really well to score 4 in a very strong Boys U11 section and, with Jian Zhou, has qualified for the National stages of this tournament, known as the Gigafinal.

*Robert Henderson*

## North Lodge Pavilion Opening



North Lodge Pavilion was opened on 22<sup>nd</sup> April by Jane Coston, Chairman of Milton Parish Council (*above*). Invited guests had afternoon tea which was then cleared 'locust style' by the Colts footballers. The cricket club organised a taster session and the colts had an informal kickabout. The sun shone and a wonderful afternoon was had by all. The following day Milton Cricket Club played their first friendly match on the new all-weather strip (*below*).

To book the Pavilion please call 01223 862763 or email [mcc@miltonvillage.org.uk](mailto:mcc@miltonvillage.org.uk).



*Photo by Andy Race*



**AG First Aid  
Training**

**Amelia Grant**  
First Aid Trainer Instructor

31 Old School Lane  
Milton, Cambridge  
[agfirstaidtraining@btinternet.com](mailto:agfirstaidtraining@btinternet.com)  
<http://www.agfirstaidtraining.co.uk>  
07795680733

## Amethyst Legal Services

- ◆ **Lasting Powers of Attorney (prepared and registered)**
- ◆ **Wills**
- ◆ **Probate assistance**

Tel: 07341 958604

[amethystlegalservice@hotmail.com](mailto:amethystlegalservice@hotmail.com)

**FREE HOME VISITS**



Milton Cricket Club are proud to be hosting the ECB All-Stars program this year, providing cricket activities weekly on a Sunday Morning from 21<sup>st</sup> May to 9<sup>th</sup> July. The programme is set centrally by the ECB and players are provided with a personalised kit as part of their registration. For more information and to sign up visit [www.ecb.co.uk/play/all-stars](http://www.ecb.co.uk/play/all-stars)

## Cambridge Vaulting Club

The Milton-based Cambridge Vaulting Club (CVC) welcomed Sparsholt Vaulting Group to their very first competition, along with returning vaulters from Harwich, Shropshire, Unicorn and Contessa. Competitors as young as four took to the saddle to compete. CVC's youngest vaulter won over the judges with her debut routine, which she had based on the story of Elsa from *Frozen*. Overall, CVC outperformed all previous competitions, with a first place rosette in every class they entered.

The college's equine director Jade Rouchy said: "It was a very exciting competition for CVC as we had our first ever college-based equine students competing. The four level 2 students did an excellent job, placing first to fourth in their section." The girls train at college every Tuesday as part of their technical skills classes. Everyone is looking forward to their next competition on 18<sup>th</sup> June. To find out more about upcoming competitions, or joining the club, visit [www.facebook.com/cwacambridgevaultingclub](http://www.facebook.com/cwacambridgevaultingclub)



*Pictured: Isabelle, Lilli, Sheri-anne, Chloe, Arabella and Vivienne*

**Est. 2002**



\*£11.00 for 5 or more hours

**THE CLEANING SERVICE  
BELLE CASA**

~ Beautiful Homes ~

A professional cleaning, washing and ironing service for a fully inclusive rate at only £11.50 per hour\*

Housekeepers specially selected & insured  
The same housekeeper each week

**01223 441055**

[www.cleanerscambridge.com](http://www.cleanerscambridge.com)

## Milton Tennis Club



The Nick Lock Cup, postponed from September, was held in April (above) and winners were Lizzie Wieser and John Whitehouse. Our next tournament will be the Dant Cup on 4<sup>th</sup> June.

Tennis coaching with Greg Ryder has been organised for the summer, see webpage for details. Samy Fennich is continuing his junior coaching on Friday afternoons.

Come and **try tennis for free**: the MTC are taking part in the LTA Great British Tennis Weekend again this year at Milton Tennis Club courts on 9<sup>th</sup> July 11am-2pm. To find out more go to [www.lta.org.uk/gbtw](http://www.lta.org.uk/gbtw). Greg and Samy will be available to give advice, there will be mini tennis for youngsters, a speed gun to find out your serving speed and the ball machine to use.

*Sue Griffin, MTC Secretary*

[www.miltontennisclub.co.uk](http://www.miltontennisclub.co.uk)

[www.facebook.com/TennisMilton](https://www.facebook.com/TennisMilton)

## Milton Cricket Club Fundraising Day

On the 16<sup>th</sup> July, Milton Cricket Club will be hosting their 3<sup>rd</sup> annual 'Invitational Club Day' at The Sycamores Recreation Ground.

This will include a cricket tournament involving 5 other local teams, a BBQ, a fantastic cake stall, a fully licensed bar, a bouncy castle and other family entertainment.

Along with this there will be a raffle draw with prizes including :

- Tour of Lords Cricket ground for 4
- 1 month free gym membership
- £100 cash
- meals out
- cricket matchday tickets
- and many more!



For any further information on the day, if you would like to buy raffle tickets or if you would like more information on the club itself please get in touch at [Cricketclubmilton@gmail.com](mailto:Cricketclubmilton@gmail.com).

We hope to see you on 16<sup>th</sup> July for what promises to be a fantastic day.

*James Drummond*



### Summit Landscapes

PAVING

CARPENTRY

DRIVEWAYS

GROUNDWORK

BRICKWORK



[www.landscapingpaving.co.uk](http://www.landscapingpaving.co.uk)

**0 1 2 2 3 - 9 2 9 3 9 4**

## Football Successes

As the football season closes, Milton and its youth football club, Milton Colts F.C. & Milton Ladies Youth, has a lot to be proud of. The U14 team finished top of its league in the Cambridge & District and Colts League (division PST 14B) and two other teams brought back some silverware to the village. On 13<sup>th</sup> May, in a full stadium at Soham Town Rangers FC, the U9 Sky team (*right*) won the Cambridgeshire **Mini Soccer League U9 Cup** 9-0 against Bar Hill Colts



Tornadoes Blue,

after a very successful season. That same day, in the afternoon, in an equally full stadium, the U11 team (*left*) won the Cambridgeshire **Mini Soccer League U11 Plate** 3-2 against Willingham Wolves, despite missing some key players in the team due to injuries. Both teams celebrated their hard-earned and well-deserved trophies with parents, friends and families. Congratulations to both and all the other teams in the club for continuing to develop and grow intelligent football players in our community.

*Arnaud Miège, Milton Colts U11 Manager*

# Godden Auto Services Ltd

*Benet Garage, Cambridge Road, Milton, Cambridge, CB24 6AW*

**Servicing and repairs  
to all makes of vehicles**

**MOT TESTS WHILE YOU WAIT**

By appointment only

**[www.goddenautoservices.co.uk](http://www.goddenautoservices.co.uk)**

All major credit cards accepted

**Tel: 01223 420380**

Opening times: Monday to Friday 8.30am—5.30pm, Closed Sat/Sun