



[www.mvv.org.uk](http://www.mvv.org.uk)

# Milton Village View

Issue No. 138 – June 2019

## In This Issue...

- Your Summer Event Calendar
- Cinema in Milton
- Annual Parish Report

*And much more!*

*Photo: Catherine Lee*

# Contact Us

Send us your news and photos:

**mvv@milton.org.uk**

Mary-Ann Johnson,  
1 Knights Way, Milton, CB24 6DE

Deadlines for articles are:

**12th January**

**12th March**

**12th May**

**1st September**

**1st November**

Issues will be published approx.  
3 weeks after the dates above.

## Online Archive

Find back copies of Village View  
(back to 1991) on our website:

**www.mvv.org.uk**

Printed by Langham Press Ltd.

**Delivered Free  
Circulation 2,000**

### **Publisher's Notice**

Whilst every effort is made to ensure accuracy the publisher accepts no responsibility for errors or omissions. Views and opinions expressed in the Village View are not necessarily those of the publisher or the editorial staff. The publisher does not accept any responsibility for claims made by advertisers.

## Milton Produce Show

The Milton Produce Show will be held in Milton Country Park on Sunday 8<sup>th</sup> September. This is a fun event with plenty of prizes to be won.



Categories include vegetables, fruit, flowers & plants, home produce, creative produce, handicrafts, photography and children's entries, so there's plenty of scope to show us your proud work. For the gloriously unsuccessful there's the hotly-contested ugliest vegetable class...

Visit [www.miltoncountrypark.org/produceshow](http://www.miltoncountrypark.org/produceshow) for more information, and we hope to see you there.

*Ellie Crane*



If you use our advertisers, please mention Village View. Thank you to our volunteer distributors.



## June

- Sat 8th** Summer Garden Party *in aid of local charities*, White Horse (p.19)  
**Thurs 13th** Go-Tri: mini triathlon, Country Park, 6-8pm (p.5)  
**Mon 17th** Moonlit open water swim, Country Park, 8:45-10:15pm (p.5)  
**Thurs 20th** *Romeo & Juliet*, Landbeach Tithe Barn†, 6-7pm  
**Sat 22nd** EACH Gala Day, Milton Hall, 11:30am-4pm (p.11)  
**Sat 22nd** Pictures in the park: *Bohemian Rhapsody*, Country Park, 6:30-10pm (p.5)  
**22nd, 23rd** Fen Edge Festival Open Day, Landbeach Tithe Barn†, 1-5pm  
**Sun 23rd** Eastern Energy Family 1940s Day, Community Centre, 10am-4pm (p.9)

## July

- Fri 5th** School Summer BBQ, Milton CofE Primary School, 6-8:30pm (p.8)  
**Sat 6th** Tithe Barn Talk, Landbeach Tithe Barn†, 2pm  
**Sun 7th** United Songs of Praise, Landbeach and Milton Baptist Church, 6pm  
**6/7, 13/14, 20/21** Find Your Wild camp nights, Country Park, 4.30pm-9am (p.5)

- Weekends** Cambridge Open Studios, (p.4)  
**Sun 21st** *A Midsummer Night's Dream*, Open Air Theatre, Country Park, 3-6pm (p.5)  
**Thurs 25th** Festival of Archaeology, Denny Abbey‡, 1-5pm  
**25th-31st** Holiday Bushcraft Clubs, Country Park, 8:30am-4pm (p.5)  
**(weekdays)**  
**29th-31st** Go Wild activity days, Country Park, 10am-4:30pm (p.5)



## August

- Thurs 1st** Go-Tri: mini triathlon, Country Park, 6-8pm (p.5)  
**1st-30th** Holiday Bushcraft Clubs, Country Park, 8:30am-4pm (p.5)  
**(weekdays, not Bank Holiday)**  
**Thurs 15th** Moonlit open water swim, Country Park, 7:45-9:15pm (p.5)  
**Thurs 22nd** *Alice in Wonderland*, Open Air Theatre, Country Park, 3-5:30pm (p.5)  
**25th, 26th** Denny Time Machine: medieval event, Denny Abbey‡, 11am-5pm

## September

- Sun 8th** Produce Show, Country Park (p.2)  
**Sat 14th** Scout Jumble Sale, Community Centre, 2:30pm  
**Sat 14th** Heritage Open Day, Landbeach Tithe Barn†, 1-5pm  
**Sun 15th** Heritage Open Day, Denny Abbey‡, 11am-5pm  
**Sun 22nd** Autumn Festival, Country Park, 10:30am-5pm (p.5)  
**Sun 22nd** United Harvest Service, All Saints' Landbeach


† [tithebaritrust.org.uk](http://tithebaritrust.org.uk), 01223 862297

‡ [dennyfarmlandmuseum.org.uk](http://dennyfarmlandmuseum.org.uk), 01223 860988

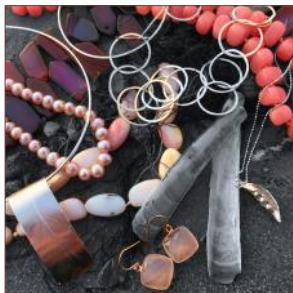
## Cambridge Open Studios 2019

The beginning of July heralds the start of Open Studio ([www.camopenstudios.co.uk](http://www.camopenstudios.co.uk)) season and this year we have a record twelve artists taking part in Milton.

Printmaker Alison Hullyer's ([www.hullyer.co.uk](http://www.hullyer.co.uk) and picture, right) garden studio in Hall End (off Fen Road) is open on the 6th, 7th, 13th, 14th, 27th & 28th July (1st, 2nd and 4th weekends). She will be demonstrating various printmaking techniques and have for sale original prints, cards, screen-printed tea towels and her popular range of coasters.



The new North Cambridge Studios ([www.oldindustries.com](http://www.oldindustries.com)) has opened in the industrial estate near Tesco, where seven professional artists can be found showing sculpture, painting, photography and film. Their studio is open 2nd & 3rd weekends.



Also on the 2nd and 3rd weekends, Cheryl Bird and Linda Bartlett will be showing their beautiful handmade silver jewellery ([www.divinedecadencejewellery.co.uk](http://www.divinedecadencejewellery.co.uk) and picture, left). Their work can be found in the studio in the garden of 6 Cambridge Road. At 31 Cherry Close you will find Richard Morgan and Marie Georghiou showing their colourful mosaic homewares ([twitter.com/hestiamosaics](https://twitter.com/hestiamosaics)) and clay figures inspired by myths and legends.

All the studios are open to the public on the weekends stated (free entry), from 11am until 6pm, or at other times by appointment. Look out for the bright yellow flags springing up around the village and surrounding areas, they signify a studio is open.

You can pick up free guides, which include a map showing over 300 artists taking part, from the Post Office, Community Centre and many other places.

### PAINTING DECORATING GLAZING

Mobile  
07860 453533  
Phone:  
01223 700800  
(local resident)



**B.J.LEONARD**

### Stephanie's MILTON'S UNISEX HAIRDRESSERS

Professional Hairstyling for Men and Women

Telephone: 01223 420526

*Discount for all new clients*

49 Cambridge Road, Milton, Cambridge, CB24 6AW

## Summer Events at Milton Country Park

There are many different events at Milton Country Park this summer, with something for everyone! You can find more information (including age restrictions for certain events) and how to book these events at [www.miltoncountrypark.org/events](http://www.miltoncountrypark.org/events)

For your entertainment, there are 3 shows for you to enjoy. The movie *Bohemian Rhapsody* will be shown on June 22<sup>nd</sup> and then there will be two open air theatre presentations: *A Midsummer Night's Dream* on July 21<sup>st</sup> and *Alice in Wonderland* on August 22<sup>nd</sup>.

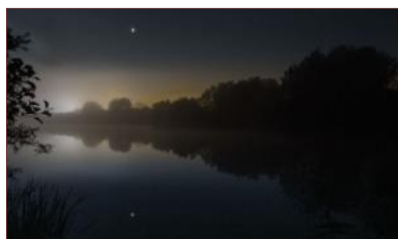
If you are looking for something more active, why not try out a Mini Triathlon on June 13<sup>th</sup> or August 1<sup>st</sup>? The evening will comprise of coaching (bike fit, transition tips, course familiarisation, run and swim technique advice) followed by a 100m swim across one of Milton Country Park's lakes (we will endeavour to provide wetsuits for those who don't have them) followed by a 3 lap (3km) off-road cycle ride and finally a 1 lap (1km) run.

For something more serene, consider a moonlit open water swim on June 17<sup>th</sup> or August 15<sup>th</sup>. Places are limited so book early to get the opportunity to have a swim with a difference under the light of a silvery full moon.

For the children there are events throughout the summer. On the first three weekends of July, the Park will be hosting Find Your Wild camp nights: activities include campfire cooking, woodland art and craft, nature watching, problem solving and team games. There are Go Wild activity days for the last three days of July where your child will have half a day of bushcraft and survival skills with a forest school instructor then an afternoon of water skills (paddle boarding, canoeing or kayaking) with qualified water sports coaches. Throughout the school holidays there will also be a Holiday Bushcraft Club where your children will learn about shelter building, knots and rope work, use of cutting tools and whittling, plant and tree recognition and uses, fire lighting techniques and wilderness cooking skills. More details at [www.wildthymeandembers.co.uk/holiday-bushcraft-club/](http://www.wildthymeandembers.co.uk/holiday-bushcraft-club/)

And finally, just as we are leaving summer, an event to lead into the next season: the Autumn Festival on September 22<sup>nd</sup>.

Paul Milligan



**ELCISA**  
Part of the Elex Group

**Complete Domestic Electrical  
Installation Services**

**Elecsa Part P Approved  
Contractor**

Office: 01223 424282  
Simon: 07810 862301

[www.proservcambridge.co.uk](http://www.proservcambridge.co.uk)  
[info@proservcambridge.co.uk](mailto:info@proservcambridge.co.uk)

**J.P.Morley  
Roofing**

Est. 1985



**All types of roofing  
Flat roof specialist**

34 Fen Road, Milton

Home: 01223 863259

Mobile: 07941 198771

[josephmorley@btinternet.com](mailto:josephmorley@btinternet.com)

## Events

### Alpha

*Why am I here?*

*Is there more to life than this?*

For answers to these and many other questions, why not try Alpha, starting again in September 2019. Alpha is a very good introduction (or reintroduction) to the Christian faith. For more info, please contact the church office at All Saints' Milton – email [office@allsaintsmilton.org.uk](mailto:office@allsaintsmilton.org.uk) or call 01223 441007



You are invited to

**'Refill'**

**Café Church**

**Sunday 1<sup>st</sup> September, 10.30am**

**A service with a difference!**

**Relaxed café style venue with 'yummy' refreshments!**

**Everyone welcome!**



**All Saints' Church, Church Lane, Milton, CB24 6AB**  
[allsaintsmilton.org.uk](http://allsaintsmilton.org.uk)



**MILTON**gasservices  
your local gas specialist



- Servicing, Installation and Repairs
- Gas Boilers, Fires, Cookers and Central Heating Systems
- Powerflush Cleansing of Central Heating Systems
- Energy Efficiency upgrades
- Landlord Gas Safety Checks and Certificates

**Contact - Eddie Kikas**  
Your Local Gas Specialist

**Tel/Fax: 01223 861810 Mobile: 07831 228181**

Email: [miltongas@btinternet.com](mailto:miltongas@btinternet.com)  
[www.miltongas.co.uk](http://www.miltongas.co.uk)

### Pilates Classes

**Milton, Landbeach & Cottenham**

- Mon 9.30am - Mixed Ability Mat Class (MCC)  
Mon 10.30am - Mixed Ability Mat Class (MCC)  
**NEW CLASS TIMES FOR MILTON SCHOOL**  
Tues 6.30pm - Intermediate Mat Class (Sch)  
Tues 7.30pm - Mixed Ability Mat Class (Sch)  
Fri 9.05am - Mixed Ability Mat Class (CBC)  
Fri 10.30am - Mixed Ability Mat Class (LVH)

Contact Liz 07768 155278  
[liz.dolman@lovepilates.co.uk](mailto:liz.dolman@lovepilates.co.uk)  
NVQ level 3 Pilates



Visit [www.lovepilates.co.uk](http://www.lovepilates.co.uk) for further information

## Milton Summer Fair

For those who have been in the village for a few years, you might remember the Milton Summer Fair which was last held in 2015. There are a small number of us who wish to bring the Summer Fair back to the village but we can not do it alone. We are looking for volunteers who are willing to help us, give up some of their free time to meet regularly and organise the event.

If you are able to help us in any way and you are interested about being on the committee, then please email: [summerfairmilton@gmail.com](mailto:summerfairmilton@gmail.com)

## Girlguiding in Milton

Girlguiding is the leading charity for girls and young women in the UK, with over 500,000 members.

Thanks to the dedication and support of over 100,000 amazing volunteers, we are active in every part of the UK, giving girls and young women a space where they can be themselves, have fun, build brilliant friendships, gain valuable life skills and make a positive difference to their lives and their communities.

We build girls' confidence and raise their aspirations. We give them the chance to discover their full potential and encourage them to be a powerful force for good. We give them a space to have fun.

Here in Milton, we run Brownies (7–10 years) and Guides (10–14 years) and have links to nearby Rainbows (5–7 years) and Rangers (14–18) units.

If you're interested getting your daughter into a unit or would like to join our fantastic team of volunteers then please visit the Girlguiding website: [www.girlguiding.org.uk](http://www.girlguiding.org.uk)

*Beth Wildman*



## Harmony

### Hair and Beauty Salon

Expert hair stylists for Men, Women  
and Children.

Beauty therapists offering a wide range  
of treatments.

Chiroprody (HCPC Registered). Sports therapy and massage  
(See website for more details)

Gift vouchers available

6 High Street, Milton, Cambridge, CB24 6AJ

[www.harmonysalon.co.uk](http://www.harmonysalon.co.uk)

Call **01223 863636** to book an appointment  
Open 9 - Late Mon – Fri  
9 - 2pm Sat





## BIRD&CAGE CINEMA



The Bird & Cage Cinema is now at Milton Community Centre. For now, the cinema will run once a month, but I hope that as we develop an audience, we will be able to offer more screenings, including matinee events for children. Our first film was the critically acclaimed *Leave No Trace* (Debra Granik, 2018) on the 1<sup>st</sup> June.

You can visit the website for more details ([birdandcagecinema.wordpress.com](http://birdandcagecinema.wordpress.com)), like our Facebook page ("BirdandCageCinema") or follow us on Twitter: [@birdcagecinema](https://twitter.com/birdcagecinema)

Clelia McElroy

## Singing in the Summertime

Community Centre 10:30-11:30am.

Fridays: 12<sup>th</sup> & 19<sup>th</sup> July, 16<sup>th</sup> & 23<sup>rd</sup> August

The singing sessions will be warm friendly fun relaxing and inclusive and people will leave feeling uplifted and refreshed. We will explore voice, and discover ways into singing through physical and vocal warm-ups.

- ♥ Sing rounds and easy to sing part songs.
- ♥ Create delicious harmonies and explore rhythm.
- ♥ Sing songs from around the world, and from these isles.

All songs taught by ear so no need to be a music reader.

Penelope Lutoslawska

## Milton Primary School Summer BBQ

You & your family are invited to join the Milton CofE Primary school Summer BBQ on Friday 5<sup>th</sup> July, 6.00pm-8.30pm.

Traditional family fun including: BBQ, bar, inflatables, raffle, games, crafts and community market.

Burgers, Sausages and Veggie burgers all £3.75 in advance (£4.50 on the night). Please order from: [www.jumblebee.co.uk/msasummerbbq2019](http://www.jumblebee.co.uk/msasummerbbq2019)



## Matthew Harney Ltd

Painting and  
Decorating  
  
Carpentry



See my Facebook page for  
photos of recent work  
[@matthewharneyltd](https://www.facebook.com/matthewharneyltd)

Tel: 07962 398114  
[www.matthewharney.co.uk](http://www.matthewharney.co.uk)





## EASTERN ENERGY (CAMBRIDGE) FORMER EMPLOYEES ASSOCIATION

INVITE YOU AND YOUR FAMILY TO  
MILTON COMMUNITY CENTRE COLES ROAD MILTON CB24 6BL  
SUNDAY 23<sup>RD</sup> JUNE 2019 10-4pm

1940s FAMILY DAY



Free entry Dress up and join the fun Bring your friends  
WW2 Re-enactment group Punch and Judy Swings and slides



• Draw Bring a picnic

Share pictures stories memories on our notice board

Information to 10 Sutton Close Milton 01223 860044

(formerly Eastern Electricity Milton Hall)



**PhoenixMilton**  
handmade paving and garden accessories

*For all your Concrete  
And Wooden Garden Products*

Paving, Edging, Ornaments, Bird Feeders, Planters, Trellis,  
Nest Boxes, Pot Hangers, Picnic Benches and much more

A limited range of Pot Plants  
for your Garden, Planters, and Pot Hangers

Tel: 01223 420669

www.phoenixtrust.org Unit 8, Milton Trading Estate

Supported work experience for people with learning difficulties

## SILVER SERVICE TAXI

*Licensed Taxi Service,  
Reliable, Local & Friendly*

**Ian May**

**07989 197816  
01223 851158**

Serving Milton for 15 years

Email: [silverservicetaxi@gmail.com](mailto:silverservicetaxi@gmail.com)

Multi-Seater 1 to 8 passengers  
Airport & Group Bookings welcome  
Special Needs & A Speciality  
[www.silverservicetaxi.co.uk](http://www.silverservicetaxi.co.uk)



# From the Archives

## 25 Years Ago: June 1994

### Milton Day Centre

We enjoyed our first outing on 22nd April with a mystery tour around some very pretty villages followed by a good lunch at the Soham By-Pass Motel.

Another 'first' was our A.G.M. on the 29th April when it was announced that Jim Fisher was standing down as Chairman of the Committee. Jim was instrumental in getting the Day Centre off the ground and thanks were expressed for his hard work.

The new committee elected was:

Chairperson	Margaret Sandford
Treasurer	Jackie Strickland
Minutes Secretary	Jeannie Medd
Committee	Ian May
	Judith Dalton
	Olivia Watson
	Rose Coulson

We are holding a coffee morning and bring and buy sale on Friday, 10th June commencing at 11am - please come along and support us

More volunteers to help at the Day Centre would be appreciated - if you can spare a few hours please ring Margaret Sandford on 862844.

*M Sandford*

## 10 Years Ago: June 2009

### Parish Councillors take a trip on Guided Bus



On the 15th of April members of Milton Parish Council were given the opportunity to travel on the Guided Bus as far as Histon. The full route is not completed yet.

Six of us travelled on the upper deck where the height of the roof was too low for some members of the group but the trip was enjoyed by all.

*Jane Coston*

## Digiorgio Roofing



Tel: 07928 106227 Email: [digiorgioroofing@gmail.com](mailto:digiorgioroofing@gmail.com)

CALL 07928106227 or EMAIL [digiorgioroofing@gmail.com](mailto:digiorgioroofing@gmail.com)

ALL ASPECTS OF REPAIRS UNDERTAKEN

### ALL ASPECTS OF ROOFING WORK

Re-Roof/New Roofs

Flat Roofs

Slate/Tile Work

Lead Work

Velux Window Installation

Chimney Repointing

Cladding Repointing

Cladding

UPVC Fascias, Soffits & Guttering

Cambridge Round Table proudly supports:



East Anglia's Children's Hospices (EACH)

# Milton Gala Day

Join us for a day full of family festival fun!



**Saturday 22<sup>nd</sup> June - 11:30am-4:00pm**

in the grounds of Milton Hall, Ely Road, Milton CB24 6WZ

**Craft Stalls**  
**Live Bands**  
**Archery**

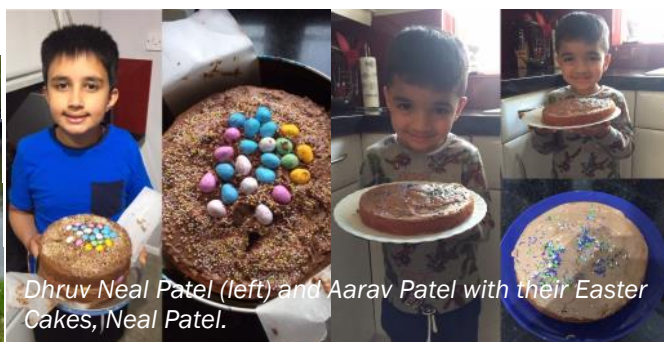
**Licensed Bar**  
**Hands-on Science**  
**Bouncy Castle**  
and much more...

**BBQ**  
**Cream Teas**  
**Fire Engine**



For more information visit [www.each.org.uk](http://www.each.org.uk) or call **01223 204916**





## Your Photos Could Be Here!

Photos taken in and around Milton always welcome – of places, people, events or just something that strikes you as beautiful. No lower or upper age limit!

Send them to [mvv@milton.org.uk](mailto:mvv@milton.org.uk), and we'll include as many as we can.



Ingrid Zoat



Stephanie Clarke



David May



John Wheeler



Sleeping Hedgehog,  
Mara Townsend



Rebecca Ostler

## Organisations

### Dance Fitness

Milton Community Centre: Mondays, 7:30-8:30pm. Dance Fitness is a super fun way of exercising:

- ♥ Starting off with an aerobic style full body warm up.
- ♥ Set Dances/Combinations working different parts of the body.
- ♥ Moving onto legs, bums and tums toning.
- ♥ Finishing with a relaxing cool down.

There will be a wide range of music played and some weeks will be themed too! If you are 16 and over you may attend! All fitness abilities are welcome to join, there will be different options for you to choose from.

To book, please email [hello@thenextstepentertainment.co.uk](mailto:hello@thenextstepentertainment.co.uk) or call 07735 075655. You *must* book to attend the class. Limited spaces available. £6 per class or book a few classes together for a discounted price. More information at [www.thenextstepentertainment.co.uk](http://www.thenextstepentertainment.co.uk)



### Scouting in Milton

**Beaver Scouts** (6-8 years old) have been having fun with Hama beads, Lego and spaghetti bridge building. They can't wait to start their cycling badge and making rocky road over the Summer.

**Cub Scouts** (8-10½) have been walking in the dark in the park, swimming, cooking pancakes and making their own mini torches! They raised £36.85 for CAMSAR through selling biscuits they had baked.

**Scouts** (10½-14) had an exciting weekend away during Easter on a four-day camp where they had great fun rafting, climbing and cooking on open fires!

This year the **Explorer Scouts** (14-17) helped at the Cambridge Half Marathon and are preparing for their week long camp in the summer, where they will be ghyll scrambling, bridge building and having a two-day hike to the summit of Snowdon!

For more information about how you can get involved and the adventures we get up, email [gsl@50thcambridgescouts.org](mailto:gsl@50thcambridgescouts.org), visit our website at [www.50thcambridgescouts.org](http://www.50thcambridgescouts.org) or go to our Facebook page at [facebook.com/50thCambridge](https://facebook.com/50thCambridge)

#### W J LUMB (BUILDERS)

GUTTERING — DRAINAGE  
UPVC FACIAS & SOFFITS  
BUILDING & FENCING  
WORK

01223 510623  
Mobile 07720 146815

#### AMBASSADOR LODGE BED & BREAKFAST

37 HIGH STREET  
MILTON  
CB24 6DF  
(Next to the Waggon & Horses Pub)

Friendly, family run B & B  
Contact Phil or Fizz Turner

01223 860168  
[www.ambassadorlodge.co.uk](http://www.ambassadorlodge.co.uk)  
[ambassadorlodge@yahoo.co.uk](mailto:ambassadorlodge@yahoo.co.uk)

## Milton Local History Group

The Milton Local History Group meets at the community centre on the first Tuesday of the month, 7:30-9:30pm. £2 per meeting. Last month, our talk by John Froment was on the history of Fen Skating and Albert Edward Tebbit, a Milton resident, who won many amateur titles and represented GB at the first winter Olympic Games in 1924.

If anyone has any information about the week of National Speed Skating events that took place at Baits Bite, Milton in February 1954, please contact the group through Chris Thomas (tel: 440024, email: [chris@miltoncontact.com](mailto:chris@miltoncontact.com)) or John Froment.

*John Froment*

## Tesco Parking

A word or warning to not only villagers but any driver/shopper going to Tesco more than once a day, separated by the 3 hour limit imposed by the whoever set the limit.

Just recently I received a letter from the car parking company claiming I had parked there for more than 8 hours. I tried to appeal online, but could not manage it, as their ref no for me exceeded the amount of characters allowed in the appeal box. It would appear the cameras this firm has cannot cope with cars going in the car park more than once a day. If you do find this happening, please report it to the Tesco management team, who will deal with it appropriately.

*Ray Daniels*

## Pay Online for Parking at Milton Country Park

The car park fee is one of the most important sources of revenue for the park, with money from ticket sales going directly towards the upkeep of the park.

If you want to avoid queuing at the car park machine or taking children to and from the car to display your ticket you can now pay and print your ticket in advance online.

Simply visit [www.miltoncountrypark.org/parking](http://www.miltoncountrypark.org/parking) and be sure to include the date of your visit and arrival time (e.g. Jan 1st 10am). Please print out your receipt and display on your dashboard.

You can also use this page to buy a longer-term parking permit if you are a regular park visitor.

## ANDREW EVANS

**01954 780 999 – 01223 864335**

email: [andrew@omegaclean.co.uk](mailto:andrew@omegaclean.co.uk) [www.omegaclean.co.uk](http://www.omegaclean.co.uk)

Family Business Since 1980

- ✓ Carpet Cleaning
- ✓ Upholstery Cleaning
- ✓ Tile & Grout Cleaning

- ✓ Leather Cleaning
- ✓ Oriental Rug Cleaning
- ✓ Carpet & Fabric Protection

- ✓ Allergy Relief Treatment
- ✓ Odour Eradication
- ✓ Stain Removal
- ✓ Carpet Fitting



## Milton WI

Several members attended the annual Cambridge Federation Council Meeting at Impington Village College and as well as the usual business we welcomed Baroness Floella Benjamin who spoke about her life in Trinidad and then in Britain from the age of 10. She became a television presenter, actress, singer, businesswoman and more recently since 2010 a member of the House of Lords. For over 20 years she has campaigned for a Minister for Children.

We also visited the Madingley American Cemetery with a guided tour giving an amazing insight into the lives and heroism of those buried at the cemetery and those missing and named on the wall. We were told by a gardener that the crosses were cleaned every three days which is a remarkable task. It is in an extremely tranquil and well cared for location.

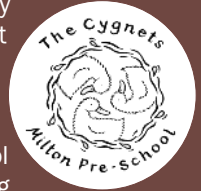
Upcoming meetings will include a flower arranging demonstration in June and Angela Collins on *A Puppet's Tale* in July. There is no meeting in August.

New members welcome. Contact Gill Offley (01223 293231) – President, or Bridget Crow (01223 441755) – Secretary, for further details, or come along. Meetings are on the third Tuesday of each month at 7.30pm in the Church Hall.

Anne Newman

## Cygnets Chair

As a registered charity Cygnets cannot exist without a Committee. We are currently looking for a parent volunteer to Chair our Pre-School Committee, starting September 2019.



Chair Responsibilities:

- ✓ Represents and acts as key spokesperson for the Pre-School
- ✓ Chairs meetings and sets the agenda for termly meetings
- ✓ Familiar with Committee procedures
- ✓ Coordinates the responsibilities and work for Committee members
- ✓ Acts as the nominated person for Ofsted purposes
- ✓ Line manages and supports the Pre-School Manager

Committee members are required to hold an enhanced DBS certificate. If you do not have a DBS, you can apply through the Committee application process.

If you are interested in the role please contact Kirsty Freestone or Alison Macklin on [milton.cygnets@gmail.com](mailto:milton.cygnets@gmail.com), call 01223 712286 or visit [www.cygnets.org.uk](http://www.cygnets.org.uk)

# SUMMIT

## SCAFFOLDING LTD

**01223 350179**

[andy@summitscaffolding.co.uk](mailto:andy@summitscaffolding.co.uk)



[www.summitscaffolding.co.uk](http://www.summitscaffolding.co.uk)

# R.B. Electrical LTD

## N.I.C. Registered

**Your Milton Domestic  
& Industrial Specialists**  
**25 Yrs Experience**

**Tel. 365200**



## EACH News



On 22<sup>nd</sup> June, East Anglia's Children's Hospices will be holding our annual Gala Day in the grounds of Milton Hall: see page 11 for more details. We *urgently need volunteers* to help at this event to help with running games, stalls, selling raffle tickets, helping on the entrance and much more! If you are interested please contact Ellen Bing at [ellen.bing@each.org.uk](mailto:ellen.bing@each.org.uk) or 01223 204 916.

■ On 27<sup>th</sup> June EACH will be holding a collection at Milton Tesco between 9am–5pm. If you can spare a few hours to help at this collection please contact Ellen Bing.

■ In celebration of the Milton Hospice's 30th Anniversary, EACH are looking for 30 fearless individuals to take part in the Team EACH skydive at Sibson Airfield on 3<sup>rd</sup> August. When you sign up you will be asked to pay a £50 deposit, we then have two options. *Self-funded*: A final payment of £165 on the day paid by the participant, then simply raise as much as you can before the event! *Charity Funded*: Suggested fundraising target of £350 (this will cover the £165 fee for UK parachuting). When you sign up, you will receive a fundraising pack from the EACH fundraising team, providing advice and tips to support all of your fundraising activities! The team will also be available to answer any questions you may have running up to the event. If you would like to find out more or to sign up, head to our website [www.each.org.uk/get-involved/events-diary/details/30th-anniversary-skydive](http://www.each.org.uk/get-involved/events-diary/details/30th-anniversary-skydive) or contact the fundraising team on 01223 204916 or [cambs@each.org.uk](mailto:cambs@each.org.uk), we look forward to hearing from you!

## Whist drives

As many of you may know, whist drives have been held in the village for a long time, and continuing soon after the Community centre opened some 30+ years ago, But since December 2017, numbers playing whist have dropped sufficiently now to say that, if we do not get more people playing, the monthly sessions will cease after the January 2020 whist drive.

The next four monthly sessions will be held on September 24<sup>th</sup>, October 22<sup>nd</sup>, November 26<sup>th</sup> and December 17<sup>th</sup>. (We are not card sharps but we enjoy whist)

Ray Daniels 3G (3rd generation)!!



## PHYSIOTHERAPY

Treatment for sports injuries, back and neck pain, joint problems etc.

**Liz Cradock** MCSP, MICHT  
Chartered Physiotherapist and  
Reflexologist, HCPC registered

Recognised by major medical insurance companies

Treatments at:

"Wellbeing at 17", 17 High Street,  
Waterbeach CB25 9JU

Tel: 01223 860928 Mob: 07714 052389

Email: [liz.cradock.physio@gmail.com](mailto:liz.cradock.physio@gmail.com)

travel counsellors



With us...it's personal

MILTON VILLAGE TRAVEL AGENT  
MR ELI KARRAM

IATA and ATOL Member

I can book any holiday you may have seen elsewhere  
Generally more choice and flexibility than available online  
No limit on booking size Business travel UK and abroad  
Everything financially protected, including flights only  
31 years' experience No obligation quotations

01223 855290 or 07963 841 679 any time

[eli.karram@travelcounsellors.com](mailto:eli.karram@travelcounsellors.com)  
[www.travelcounsellors.co.uk/eli.karram](http://www.travelcounsellors.co.uk/eli.karram)

Best Independent Travel Agency - British Travel  
Awards 2018

## Lion and Lamb

Tel: 01223 860202

[www.lion-lamb.co.uk](http://www.lion-lamb.co.uk)

Calling all Pirates & Mermaids! The family patio and fantastic Pirates Lagoon play area is a safe environment for the little ones to play from 10am daily. You can also enjoy a Full English breakfast 7 days a week until 11.30am, or treat yourself to a Barista coffee or TeaPigs tea. Our bouncy castle will be out at weekends as well as weekdays during school holidays – providing the weather is suitable of course!

For all sports lovers – we show SKY & BT Sport – on the big screen in the lounge bar and the big screen on the outside terrace.

Enjoy one of our meal offers – Monday is Steak Night - enjoy a FREE pudding with every steak meal. Tuesday & Wednesday - 2 for £20 - Handmade Pie & Chips. Thursday - 2 for £22 - Fresh beer-battered 8-10oz Cod & Chips. Friday Wine & Dine night – try one of Chef's tasty specials and wine offers. Our range of gluten free, dairy free, vegetarian and vegan dishes grows and our menu identifies all dishes that fall into these categories. As we cook to order we can also tailor many further dishes to individual requirements.

**Fathers Day** 16<sup>th</sup> June - we take bookings for the inside and outside tables – call to reserve.

11<sup>th</sup> July - Join us for some music after Newmarket Ladies Day - **FUNK & SOUL** -7-11pm

**2nd Annual Gin Festival** – 23-26 August. Gin tent in the garden loads of suggestions, mixes, spritz's, fizz and loads of Gin. Sunday afternoon - chilled Soulful House & Funk tunes in the garden with Nigel Barrett.

6<sup>th</sup> September – **The Lonely Tone** - a musical collaboration of THE LONELY and INDIETONES front man Foxy - you won't want to miss this! In the main bar from 8.30pm

20<sup>th</sup> September - we welcome back **Freddie Hall** – book your tables now for another fantastic evening with Freddie playing his mix of Jazz, Soul, Motown and R&B

27<sup>th</sup> September - **Macmillan World's Biggest Coffee Morning** - join us for tea, coffee & cake raising funds for this great charity. Then, live in the bar from 8.30pm - **Phil Watts – 80's Unplugged** – all those great tunes from this masterful musician!

**Psychic Suppers** - 3<sup>rd</sup> July & 4<sup>th</sup> September – one-to-one readings including dinner.

Full details of all events can be found at on the website, follow us on twitter or find us on Facebook

Lawrence & Sally

**Jolly Brewers is CLOSED until Further Notice**

All your re-upholstery needs  
"COVERED"

**S.PROCTOR**  
UPHOLSTERY LTD.

Antique & Modern  
Domestic & Commercial

Foam Cut To Size  
D.I.Y. Sales

Family Trade Since The 1940's

**TEL: 01223 440430**

Email: [sproctorupholstery@gmail.com](mailto:sproctorupholstery@gmail.com)

C2 BUTTON END IND EST, HARSTON, CAMBRIDGE, CB22 7GX

**GJK Accountancy Limited**

Accountancy services  
annual and monthly accounts  
bookkeeping  
VAT and tax returns  
Company formations

[griffith.kinsman@ntlworld.com](mailto:griffith.kinsman@ntlworld.com)  
30 The Rowans, Milton, CB24 6YU  
Mobile 07710 503 148

## Waggon & Horses

Tel: 01223 570471

[www.waggonandhorsesmilton.co.uk](http://www.waggonandhorsesmilton.co.uk)

With summer approaching its time to enjoy our large secure garden with a covered decking area. Our garden is open daily from 10:30am, perhaps a full English breakfast could accompany you, available until 12pm Tues - Sun. The petanque court is ready to be used. We are looking to build a team of people who can learn the game before entering the local friendly league and perhaps the competitive league next year? In addition you can find table tennis and a bouncy castle over the summer months!

We are proud to be able to offer most of our dishes as a gluten free option too. Our new menu will boast a range of Sandwiches, Burgers, Light Bites and Snacks with the addition of Pizzas on Fridays and Saturdays which have proved very popular. We are stocking a new range of gluten free and alcohol free beer & cider. After receiving feedback over the past year it was apparent we were missing something from our lager offering and so we have added Carlsberg! We have also increased our range of ale lines from 5 to 7.

Ales Tuesdays – from 4pm until 8pm ALL of our ales drop to £3.00 a pint!

Food Truck Thursday - different every week bringing choice and something for everyone.

Keep your eyes on our Facebook page or website for the latest on our events, offers or beers.

*George and the Waggon Team*

## White Horse

Tel: 01223 860327

[www.facebook.com/whitehorsemilton](http://www.facebook.com/whitehorsemilton)

We look forward to seeing you during this summer either in the bar or in our garden; you are welcome to walk to us or you can park in our large car park. From 8th June we will have a new children's play area in the garden. To make sure that the area remains safe and clean for children to play it will be fenced; you will be able to enjoy your drink or your meal al fresco while you watch your children playing safely, and there will still be plenty of space in the garden for your dogs. Dogs are welcome at all times both indoors and outside and there are doggy treats at the bar. We respectfully ask you to keep your dog on a lead.

All our food is home cooked on the premises by our four qualified chefs (Adam, Simon, Ava and Dan); it is locally-sourced and freshly prepared, and includes several vegetarian and vegan options. We offer our usual Sunday roasts, plus Adam's Thais and Pies, and his daily Chef's Specials. We also have our 5-star food hygiene award to recommend us. You can phone or call in to book – please tell us about any food allergies.

We have 6 rotating ales plus a craft ale, with 2 gluten-free beers and 3 non-alcoholic beers; we always have at least 5 ciders.

Our entertainment line-up for the next few months includes:

- 🎵 June 7th – Karaoke
- 🎵 June 21st – live music from So80s Band
- 🎵 July 5th, August 2nd, October 4th – Karaoke
- 🎵 August 21st – Freddie Hall Band
- 🎵 September 13th – Jack Band

In our Games Room we have bar billiards and a dart board, and of course we still have Alan's free-to-play Quiz Night every Thursday from 9pm (with free chips!)

*Ava, Alan, Adam, Gemma, Nikki, Simon, Dan, Kate, Milly, Mollie, Fiona and Kelli*

## Yoga in the Park

This introductory yoga course will focus on postures and mindfulness techniques to reduce stress, anxiety and building confidence and self-esteem. This 6 week course beginning Monday 10<sup>th</sup> June is in the tranquil setting of Milton Country Park, in the Wild Place. All equipment is provided and the entire course costs £45.

The course is led by Jenny, yoga teacher and founder of Perfectly Imperfect. She will use meditation, mindfulness, journaling techniques, positivity games, quotes and speech to build the course content and deliver techniques that can be used thereafter. These are techniques for life.

The course is perfect for you if:

- ⊗ You are experiencing low energy levels
- ⊗ You would like to give your confidence a boost
- ⊗ You feel stressed or anxious
- ⊗ You would like an introductory, friendly yoga class with likeminded people!

Book your place at [tinyurl.com/mcparkyoga](http://tinyurl.com/mcparkyoga). Concessionary rates are available for people on income support – please contact us at [sport@cambridge.gov.uk](mailto:sport@cambridge.gov.uk) for details

## Cleaner Required

All Saints Church, Milton is looking for a reliable cleaner for 4½ hours a week to clean the Church Hall. The hours required would be 8-9:30am Mondays, Wednesdays and Fridays.

For further details please contact Michelle in the church office on 01223 441007 or by email on [office@allsaintsmilton.org.uk](mailto:office@allsaintsmilton.org.uk)

### Landbeach & Milton Baptist Church

All are welcome to our small but friendly fellowship. Further details from Maureen Clark, tel 01954 250118

### Sunday Services

10.30am Family Service

6pm Evening Worship

(4th Sunday @ Girton)

### EMPLOYMENT OR FAMILY PROBLEMS?

\*Settlement Agreements\*Unfair Dismissal\*

\*Discrimination\*Breach of Contract\*

\*Divorce\*Children Disputes\*

\*Financial Settlements\*Separation Agreements\*

**FREE INITIAL ADVICE**

**SMITH**

**MAY**

**SOLICITORS LLP**

Barnwell House, Barnwell Drive,  
Cambridge CB5 8UU

**BRIDGET GILTINANE – Family Lawyer**

[bridget.giltinane@smslaw.co.uk](mailto:bridget.giltinane@smslaw.co.uk)

**JOANNE MAY – Employment Solicitor**

[joanne.may@smslaw.co.uk](mailto:joanne.may@smslaw.co.uk)

**CALL 01223 415372**

**FREE PARKING**

[www.smslaw.co.uk](http://www.smslaw.co.uk)

### Sunday services

**St. Paul's  
MILTON**  
Church at the heart of the community

### Midweek groups & events

#### 8am Holy

#### Communion

A quiet, reflective way to start the day.

#### 10.30am Morning Worship with

#### Children's Groups

Caters for the whole church, ages 0-100+. Refreshments served.

#### 6pm Evening Prayer

Said service with short reflection

Little Rainbows Toddler Group, Parents & Under 1s, Lunch Club, Mothers' Union, Stitchers' Club, Reading Group ...

For full details of all these and more please visit:

[allsaintsmilton.org.uk](http://allsaintsmilton.org.uk)



## Wildlife Notes

I've recently been in correspondence with another Milton wildlife enthusiast, Derek Booth, who comments that when he first lived in Milton hearing cuckoos was common, and even nightingales could be heard down the Fen Road in spring. Presumably since then, new houses, and garden clearances at the older houses, tidying up and removing trees and thickets which presumably gave them habitat, has meant these species are long-gone. Even sparrows have retreated since I moved to Milton, with just a couple of residual populations hanging on; one near the Post Office on Coles Road, where I suspect they nest under the roof of the lovely old house nearby, and another in the hedge surrounding what I see Open Street Map calls "Teletubby Hill" near the hairdressers on The Rowans.

I first saw swallows on St George's Day, both over Milton Fen and then near the A14 bridge over the river where they nest. It was a good commute to work that day, as then I saw three common terns. Perhaps the lovely warm Easter weekend, surrounded by cold miserable weather, had given them a nudge? A colleague saw housemartins at the large colony at Addenbrooke's the same day, but it wasn't until the 28th April that I spotted them in Milton. On 11th May (what a cold and miserable day!) I heard housemartins chattering overhead so looked up to see them. There were also two swifts, but not screaming in their usual uplifting manner. Perhaps they were thinking they'd made a mistake and it was still only February; it was cold enough! The hawthorn really only came into flower in late April; sometimes it's nearly been over by mid-May.

A piece of good news; it does appear that hedgehogs are making it back into my area although their visits to the feeding station are somewhat intermittent, suggesting I'm still only on the edge of their range. This alerts me to issue a reminder to be very careful when emptying compost heaps or tidying up piles of leaves or undergrowth. There may be a hedgehog asleep in there as they sleep during the day and go out foraging at night. Horrific and fatal injuries can be caused by strimmers. Undergrowth and leaf or log piles not only provides homes for invertebrates, which in turn provide food for hedgehogs, but they also provide homes for hedgehogs, who often seem to prefer such places to the twee hedgehog houses sold in garden centres, although in the absence of anything else, I'm sure they wouldn't shun such a construction.

*Heather Coleman*



**AG First Aid  
Training**

**Amelia Grant**  
**First Aid Trainer Instructor**

31 Old School Lane  
Milton, Cambridge  
[agfirstaidtraining@btinternet.com](mailto:agfirstaidtraining@btinternet.com)  
<http://www.agfirstaidtraining.co.uk>  
07795680733



**J Bowles  
Electrical**

**RESIDENTIAL & COMMERCIAL  
ELECTRICIAN BASED IN MILTON**

**Call John on: 07725 351582**

[www.jbowleselectrical.co.uk](http://www.jbowleselectrical.co.uk)  
[info@jbowleselectrical.co.uk](mailto:info@jbowleselectrical.co.uk)

## All Stars Cricket for Junior Players



All Stars Cricket provides boys and girls from 5-8 years old with 8 weeks of non-stop fun. The activity and game based programme is suitable for all skill levels, providing your child with the foundations to begin a lifelong love of physical activity and cricket, while making friends in a safe and enjoyable environment.

It costs £40 for the 8 week programme and there is a personalised kit bag for every player



For more information about your All Stars session contact Jack Drain at [cricketclubmilton@gmail.com](mailto:cricketclubmilton@gmail.com) or call 07840104293.

For more information about the programme or to book, visit [tinyurl.com/milton-allstars-2019](http://tinyurl.com/milton-allstars-2019)

## Milton Tennis Club

Are you a tennis player or want to start playing again? Join Milton Tennis Club, a member of the Lawn Tennis Association. Play social tennis or as a member of match teams

- Club Nights: Wednesdays & Fridays from 6pm
- Match Teams: Ladies, Mens, Mixed and Super Seniors
- Intra-club Tournaments (e.g. Dant Cup - 2019 winners pictured right)
- 2 coaches (for adults and juniors)
- Friendly Matches and various Social Events



Please come along to a Wednesday Club Night for a game and a chat. Email: [milontennisinfo@gmail.com](mailto:milontennisinfo@gmail.com); Web: [www.milontennisclub.co.uk](http://www.milontennisclub.co.uk)

*Sue Griffin, MTC Secretary*

**Est. 2002**

**THE CLEANING SERVICE**

**BELLE CASA**

*~ Beautiful Homes ~*



A professional cleaning, washing and ironing service for a fully inclusive rate at only £12.50 per hour\*

Housekeepers specially selected & insured  
The same housekeeper each week

**01223 441055**

**[www.cleanerscambridge.com](http://www.cleanerscambridge.com)**

\*£12.00 for 5 or more hours

## CWA Team Takes Gold at Inter-College Competition

On 3<sup>rd</sup> April College of West Anglia (CWA) students from the college's Cambridge campus rode to victory at the Inter-College Equine Team Competition. The day-long competition was hosted by Hadlow College, Kent and saw four-person student teams from Hadlow, Plumpton, Merrist Wood, Berkshire College and CWA compete.



Success for (left-right) Tate Frost, Ella Wilson, Emma Pewter (team manager), Victoria Gedny and Maddie Paul.

CWA student Tate Frost won the Preliminary dressage test with an impressive 68.65% - over 4% ahead of the second placed rider - and Victoria Gedny continued this success in the Novice test with another win for

CWA with a whopping score of 69.58%, before Maddie Paul and Ella Wilson became the only students from the same team to clear their two show jumping courses, penalty free. Finally, the teams participated against each other in a quiz, which tested knowledge across a wide range of equine subjects. An interesting 'Jeopardy' format made for an exciting finale, with teams able to decide how many points they wished to gamble on bonus questions. CWA finished 2nd in the quiz to become overall winners on the day.

Programme manager of Equine Studies at CWA's Cambridge campus said: "I am so proud of what the team have achieved. A special mention for the reserve rider, Grace Mallows, who also attended practices, had to learn both dressage tests, was a fantastic support on the day and selected the all-important envelope of drawn horses."

*Grace Jones*



**Summit Landscapes**

PAVING

DRIVEWAYS

BRICKWORK

CARPENTRY

GROUNDWORK



[www.landscapingpaving.co.uk](http://www.landscapingpaving.co.uk)

**0 1 2 2 3 - 9 2 9 3 9 4**

## Milton Colts FC

Two Milton Colts teams competed in the Colts League Cup Finals in their respective age groups: these were fantastic achievements and great recognition for the club.

On 11<sup>th</sup> May the U12 Sky team won 1-0 vs Cambourne, becoming the first Milton Colts team to lift the trophy at U12 (pictured, right). This success means that the U12 Sky have completed the 'double' having won their League two weeks earlier.



On 10<sup>th</sup> May the U11 Sky team narrowly lost 1-0 against Isleham Colts. Both teams are highly regarded in their age group and as always it was a tight game.

Meanwhile, Milton Colts Navy Under 11s team (2019/2020 season) are looking for new players. The team has a new coach who is amazing and they also have a lot of parent support, all they need now are some new players! They currently train on Thursdays and play matches on Saturdays. They are a fantastic group of friendly kids who would welcome anyone enthusiastically. Please email the club manager Neal Patel - [nealpatel81@hotmail.com](mailto:nealpatel81@hotmail.com) or Yoko Watanabe - [yokowtnb@hotmail.com](mailto:yokowtnb@hotmail.com)

# Godden Auto Services Ltd

*Benet Garage, Cambridge Road, Milton, Cambridge, CB24 6AW*

**Servicing and repairs  
to all makes of vehicles**

**MOT TESTS WHILE YOU WAIT**

**By appointment only**

**[www.goddenautoservices.co.uk](http://www.goddenautoservices.co.uk)**

**All major credit cards accepted**

**Tel: 01223 420380**

**Opening times: Monday to Friday 8.30am—5.30pm, Closed Sat/Sun**