



[www.mvv.org.uk](http://www.mvv.org.uk)

# Milton Village View

Issue No. 117 – March 2015

## In This Issue...

- Summer Fayre Booking Form
- Polling Station Move
- Solar School Refit
- New Cygnets Site
- Community Orchard

*And much more!*

*Starwheel on Fen Road, Chris Thomas*

# Contact Us

Send us your news and photos:

**vv@miltonvillage.org.uk**

1 Knights Way, Milton, CB24 6DE

Deadlines for articles are:

**12th January**

**12th March**

**12th May**

**1st September**

**1st November**

Issues will be published approx.  
2 weeks after the dates above.

## Online Archive

Find back copies of Village View  
(back to April 2011) on our website:

**milton.org.uk/mvv**

Printed by Langham Press Ltd.

**Delivered Free  
Circulation 2,000**

### Publisher's Notice

Whilst every effort is made to ensure accuracy the publisher accepts no responsibility for errors or omissions. Views and opinions expressed in the Village View are not necessarily those of the publisher or the editorial staff. The publisher does not accept any responsibility for claims made by advertisers.

## EACH Gala Day & Fun Dog Show

The annual EACH Gala Day and Dog Show will be held on Saturday 16th May at Milton Hall, Ely Road. The day runs from 11am to 3pm.

There will be a range of entertainment throughout the day, including various stalls and games for adults and children, an animal petting area, bouncy castle, face painting and plant



stall. New for 2015, a Craft Fayre will also be held in All Saints' Church. Refreshments, including a BBQ and afternoon teas, will be on offer throughout the day.

There will also be a classic car display and members of the Totally Unstable Scooter Club will be attending to show off their scooters!

The Fun Dog Show will be hosted by STAR Radio star Nicksy. The show starts at 12.45pm with various classes and agility displays throughout the session.

Anyone available to volunteer on the day is asked to contact Lucy Glover at the EACH Fundraising Office on 01223 204916.



If you use our advertisers, please mention Village View. Thank you to our volunteer distributors.





## April

- Thurs 2nd** Maundy Thursday Holy Communion, All Saints', 8pm  
**Fri 3rd** Messy Easter, All Saints', 10am  
**Fri 3rd** Walk with the Cross, Landbeach & Milton Baptist Church, 10.30am  
**Fri 3rd** Hour at the Cross, All Saints', 2pm  
**Fri 3rd** Contemplation — The Journey to the Tomb, All Saints', 3-6pm  
**Sun 5th** Easter Day Holy Communion, All Saints', 8am  
**Sun 5th** Easter Celebration with Holy Communion, All Saints', 10.30am  
**Sun 5th** Easter Day Service, Landbeach & Milton Baptist church, 10.30am  
**Sun 5th** Easter Egg Hunt, Country Park, 2-4pm (see below)  
**5th/6th** Easter Fun at Denny Abbey, 10.30am-5pm  
**Sat 11th** Tudor Tithe Barn Fun Day, Waterbeach Road, Landbeach, 10.30am-1pm  
**Sat 11th** MOBC Jumble Sale, Bowls Pavillion, Coles Road, 11am (see p.4)  
**Tues 28th** Community Café, Community Centre, 2.30-4.30pm (see p.4)

## May

- 2nd-31st** Textile Festival, Denny Abbey (inc. half-term craft activities on 27/28 May)  
**Sun 3rd** Milton Outdoor Bowls Club Open Day, Coles Road, 2-4pm (see p.4)  
**Mon 4th** May Monday Arts & Crafts Fair, Denny Abbey, 10.30am-4pm  
*Including stalls, morris & maypole dancing and children's activities.*  
**Thurs 14th** Ascension Day Holy Communion, All Saints', 8pm  
**Sat 16th** EACH Gala Day, Dog Show & Craft Fayre, Milton Hall, 11am-3pm (see p.2)  
**Sun 24th** Pentecost Celebration & Junior Church, All Saints', 10.30am  
**24th/25th** 40s at Denny Abbey, 12 noon-4pm  
*Vintage vehicles, maypole dancing, 40s sing-a-long, and much more!*

## June

- Sat 13th** MU Strawberry Tea, All Saints' Church Hall, 2.30pm  
*Enjoy the early summer with a scrumptious strawberry cream tea. All welcome.*

See pp.18-19 for more events at the pubs.

See [www.milton.org.uk/diary.html](http://www.milton.org.uk/diary.html) for more event details.

See [www.miltoncountrypark.org](http://www.miltoncountrypark.org) for more park event details.

## Easter Egg Hunt

Milton Country Park  
 Easter Sunday (5th April)

Entries 2-3.30pm

£2.50

Start at the Visitors Centre

## Make a Will for ACT

Haven't got around to writing a Will or need to update an old one? From 20-24th April, you can make a will and raise money for Addenbrooke's Charitable Trust (ACT) at the same time. For further information visit: [www.act4addenbrookes.org.uk/makeawill](http://www.act4addenbrookes.org.uk/makeawill) or call Alice Macek on 01223 217331.



## MOBC Jumble Sale

There will be a **Jumble Sale at 11am on Saturday 11<sup>th</sup> April at Milton Outdoor Bowls Club Pavilion, Coles Road.** Do come along and get yourself some bargains.

The season will soon be starting for Milton Outdoor Bowls Club at Coles Road Milton. All members of the public are welcome to come and try this very sociable game at our **Open Day: 2pm to 4pm Sunday 3<sup>rd</sup> May.**

The only requirement is to wear flat shoes or trainers. Bowls are provided, with help and guidance from Club members.

For more information about the Milton Outdoor Bowls Club, you can contact either the chairman, Bob Waters, on 860620 or the secretary, Jim Daniels, on 502194 or alternatively look at the web site: [mobc.org.uk](http://mobc.org.uk)

## Community Café

The Milton Community Café is now nearly a year old. It is a friendly venue run by Milton volunteers. We provide a safe, welcoming place to relax with a hot or cold drink. Some come to chat, others for a game or two. We even have a craft table – Janet Cook successfully introduced a small group of us to making cards in the last two sessions.

£2 entry for adults covers your tea, coffee or squash and a piece of cake or a biscuit. Come along: we look forward to seeing you!

Contact either Chris Thomas 440024 or Sue Nunn on 861747 if you have any questions or need help with transport within Milton.



### PAINTING DECORATING GLAZING

Mobile  
**07860 453533**  
Phone:  
**01223 700800**  
(local resident)



### Stephanie's MILTON'S UNISEX HAIRDRESSERS

Professional Hairstyling for Men and Women

**Telephone: 01223 420526**

*Discount for all new clients*

49 Cambridge Road, Milton, Cambridge, CB24 6AW

## MCP Community Orchard Project

Recently, you may have noticed more activity than usual at the Milton Country Park orchard! Gates and rabbit fencing are going up, the weeds have been reduced and more planting has begun. The volunteers have held several productive work parties, learnt new skills and enjoyed some fine weather and biscuits in the process. With help from Mick Woolhouse from CSLT, the park rangers, students from Cambridge Regional College and some expert fencing advice from local volunteer Nik Browning, this area of the park is starting to take shape and become a really attractive place to visit.



On 8th March ten new local heritage apple trees were planted by the junior rangers, a group led by park ranger, Lorraine Whybrow. The orchard now includes all 12 local variety eating apple trees, something we all look forward to sampling over the coming years!

The rabbit fencing and the fact that the orchard is recognised as a 'priority habitat' means that the volunteers now have a space where they can focus on improving biodiversity. Wild flowers will be added, a tree pruning workshop is being held on 22nd March and future plans include species counts, hedge planting and creating a wildlife pond.

If you would like to get involved or learn more about the project then please do get in touch. We're a friendly group of all ages and no experience is necessary. Just send an email to [orchard@miltoncountrypark.org](mailto:orchard@miltoncountrypark.org) or visit [www.miltoncountrypark.org/orchard](http://www.miltoncountrypark.org/orchard)

*Sarah Harris, MCP Community Orchard Project Coordinator*



### HEATING & PLUMBING SERVICES LTD

- GAS SAFE REGISTERED
- Boiler Installation - Gas & Oil
- Complete Bathroom Design and Installation
- Landlords Certificates
- Power Flush
- Tiling
- Under Floor Heating
- Gas Boiler Servicing
- Free Estimates

*\* Covering Cambridge for 30 years \**



**Ph: 01223 242544**

Email: [malcolm.potts@btconnect.com](mailto:malcolm.potts@btconnect.com)  
Unit 8, Ronald Ralph Court, Wadlows Road,  
Cambridge, CB5 8PX



2163

## J.P.Morley Roofing

Est. 1985



### All types of roofing Flat roof specialist

1 Old School Lane, Milton

**Home: 01223 863259**

**Mobile: 07941 198771**

[josephmorley@btinternet.com](mailto:josephmorley@btinternet.com)

## Milton CE Primary Solar Refit

Schools are under increasing financial pressure, with rising energy costs bringing additional strain on budgets. In 2014/15 Cambridgeshire was the lowest-funded education authority in the country, and Milton School is having to make hard decisions about how to use its budget. The boilers are ageing and the building is inefficient, leading to high energy bills, but the money that the school has for building maintenance is not enough to make the improvements needed.

Through Cambridgeshire County Council's Mobilising Local Energy Investment for Cambridgeshire (MLEI) project, the school is looking at an arrangement whereby improvements are made to the school building now and paid for from the



future energy savings. As part of this, the school is aiming to install solar panels to generate electricity, which will be a source of income for the school.

The Solar Refit project combines both new solar panels and a retrofit of energy saving measures for the school building. If the solar panels can be funded by the school then the money from energy generation will benefit the school sooner. Milton School Association (MSA) have thrown themselves behind this project, with lots of fundraising planned. Members of the school participated in March Fit, a running challenge to raise funds (and fitness) during March. A group of teachers and parents ran Wimpole Night Run in early March and the following day three of the school's parents ran the Cambridge Half Marathon. Other supporters of the school ran both the Parkruns in Milton Country Park. If you would like to support the Solar Refit project, please visit [www.justgiving.com/marchfit](http://www.justgiving.com/marchfit).

Nat Johnson



**MILTON**gasservices  
your local gas specialist

161938



- Servicing, Installation and Repairs
- Gas Boilers, Fires, Cookers and Central Heating Systems
- Powerflush Cleansing of Central Heating Systems
- Energy Efficiency upgrades
- Landlord Gas Safety Checks and Certificates

**Contact - Eddie Kikas**  
Your Local Gas Specialist

**Tel/Fax: 01223 861810 Mobile: 07831 228181**

Email: [miltongas@btinternet.com](mailto:miltongas@btinternet.com)  
[www.miltongas.co.uk](http://www.miltongas.co.uk)



### Pilates Classes Milton & Landbeach

Mon 9.30am - Mixed Ability Mat Class (MCC)  
Mon 10.30am - Mixed Ability Mat Class (MCC)  
Tues 6.20pm - Intermediate Mat Class (Sch)  
Tues 8.15pm - Mixed Ability Mat Class (Sch)  
Fri 10.30am - Mixed Ability Mat Class (LVH)

**Contact Liz on 07768 155278**

or [liz.dolman@lovepilates.co.uk](mailto:liz.dolman@lovepilates.co.uk)

NVQ level 3 Pilates & PureStretch Instructor

For further info, visit [www.lovepilates.co.uk](http://www.lovepilates.co.uk)



## Exciting Future for Cygnets Milton Pre-school

After 2½ years of researching and planning, the Cygnets Milton Pre-school will be starting the new school year in a new building! In partnership with Cambridgeshire County Council (and with the help of Section 105 funding) and the Milton Primary School, our new building is scheduled to be erected over the Easter break. Of course, there will still be a lot to do before we can actually move in, but it will be great to finally see it on site on the east side of the school playing fields.



The new building is a 7-bay mobile unit, and will consist of two separate 'classroom' areas, in addition to an office, toilets, a kitchen, a lobby and an outdoor play space. We are so excited to be able to have our own dedicated space and we are sure it will mean more can be done to ensure fantastic pre-school provision for families in Milton and the surrounding area.

**Please note that the application deadline for September allocations is 30<sup>th</sup> April 2015.**

### Can you help us?

We are a registered charity, which means any help from local people or companies would be greatly appreciated.

Can you or someone you know help with any of the following?

- interior fit-out (fire & security alarms, heating systems, furniture & appliances, etc.)
- maintenance (cleaning, servicing, supplies, etc.)
- cash donations
- grant applications and/or funding

We would love to hear from you. Or if you are able to spare some time to help with the physical move in the summer, please do get in touch by contacting the preschool on 862323 or by emailing Lesley Burtenshaw ([chair.cygnets@gmail.com](mailto:chair.cygnets@gmail.com)) or Alison Macklin ([miltoncygnets@gmail.com](mailto:miltoncygnets@gmail.com)).

*On behalf of Cygnets Staff and Management Committee*

## Harmony

### Hair and Beauty Salon

Expert hair stylists for Men, Women  
and Children.

Beauty therapists offering a wide range  
of treatments.

Chiropody (HCPC Registered). Sports therapy and massage  
(See website for more details)

Gift vouchers available

6 High Street, Milton, Cambridge, CB24 6AJ



[www.harmonysalon.co.uk](http://www.harmonysalon.co.uk)

Call **01223 863636** to book an appointment  
Open 9 - Late Mon – Fri  
9 - 2pm Sat



## New polling station

For the 7 May elections, the polling station for the village has changed. **Please go to Milton Community Centre**, Coles Road to cast your vote. The polling station will be open from 7am to 10pm. To be able to vote in the elections, you must be on the electoral register by 20 April. You can register online at [www.gov.uk/register-to-vote](http://www.gov.uk/register-to-vote), or call SCDC on 03450 455214 to register over the phone. Whichever way you register, you'll need to have your National Insurance number to hand.

## Milton Landfill Site

The landfill site behind the recycling centre on Butt Lane is run by FCC Environment. They have created a page on their website with information regarding on the site:

[www.fccenvironment.co.uk/milton.html](http://www.fccenvironment.co.uk/milton.html)

## Reporting of Smells

If you are a resident of Milton Village affected by smells, and want specific updates from the Milton Air Quality Working Party, please email [Hazel.smith@miltonvillage.org.uk](mailto:Hazel.smith@miltonvillage.org.uk) with your contact details or call her on 01223 860752. Please give your name, address and email address. You can give your telephone number if you'd like one of us to call you, but it is optional.

## Parish Councillors

Below please find an updated list of your councillor contact details (for email addresses, please visit the website at [miltonvillage.org.uk](http://miltonvillage.org.uk) and click on 'Meet Your Parish Councillors'):

### Parish Councillors

Jane Coston *Chairperson*

	861447*
David Chamberlin	861511
Adam Dark	07403 162266
Rob Farrington	860160
Gary Heaney	690317
Mark Hersom	07852 997771
Jim Mowatt	861024
Michael Perkins	07769 665836
David Stirrups	861447*
Richard Summerfield	860715
Ian Tyes	574394
Gemma Faulkner <i>Clerk</i>	861447*
* - <i>Parish Office</i>	

### Parish & District Councillors

Anna Bradnam	862364
Hazel Smith	860752

### County Councillor

Maurice Leeke	441562
---------------	--------



**ZUMBA**  
fitness

Dance Fitness Class

**Zumba Classes in Milton 2014**  
**Licensed Zumba Instructor Liz Dolman**

Milton Primary School  
Tuesday Nights 7.15pm  
All Abilities Welcome

Weekly £6 or 5 Session Card Available

For further information  
contact Liz on 07768 155278  
or [liz.dolman@love2zumba.biz](mailto:liz.dolman@love2zumba.biz)

Visit [www.lovepilates.co.uk/zumba](http://www.lovepilates.co.uk/zumba)

## AMBASSADOR LODGE BED & BREAKFAST

37 High Street, Milton, CB24 6DF  
(next to the Waggon & Horses pub)

Friendly, family-run B&B

Contact: Phil or Fizz Turner  
Tel: 01223 860168

[www.ambassadorlodge.co.uk](http://www.ambassadorlodge.co.uk)  
e-mail: [ambassadorlodge@yahoo.co.uk](mailto:ambassadorlodge@yahoo.co.uk)



## From the Desk of the Parish Council Chairperson

At our February meeting we welcomed John Saunders as a co-opted member and we hope he enjoys his time on the parish council. We have other vacant seats and so would urge everyone to consider standing for the parish council. Why not come along to our next meeting in April to see what we do and meet other parish councillors? We are looking for people to stand this May for election.

**Cycle/footway improvement:** A small group of parish councillors met with the County Council Cycling Officer who is looking at improving the area between the cycle bridge and Winship Road. Initially the hedge has been cut back along side this path. Cycleway/footway width improvements are being planned, as well as improvements at the bottom of the bridge. We continue to have issues with people parking at the bottom of the bridge and urge people to report any incidents to the police.

**North Lodge Park:** May I take this opportunity to welcome all the new residents of North Lodge Park. We understand that all the homes in this new development are now occupied. The Parish Council have been working over many years with the various developers of this site to get the best for the village in the legal agreements. The legal agreements cover various items and include a sum for public art. The Parish Council are considering what to spend this on as a wide range of options could be considered public art. We also are awaiting the handing over of the new pavilion and sports area, which will have two football pitches. A large part of the open space, the new play area and the Repton Lake will remain the responsibility of a management company and will not be passed on to the Parish Council.

**Consultations:** Recently we have been consulted on the redevelopment of the area around the new railway station and have sent in lengthy response. We were also represented at a recent consultation about the A14 and have sent in an initial response.

**Sewage works:** On a personal note I was very pleased to be invited to see the massive changes that are going on at the sewage works. I felt very privileged to be able to see inside all the new structures before they are commissioned. I understand there is still more work needed on site to decommission some of the very old parts of the site. Prior to all this work starting I was invited to see a site where a similar system was in use and was pleasantly surprised how little odour there was even when I stood next to the various systems.

Jane Coston

Chairperson, Milton Parish Council



*For all your Concrete  
And Wooden Garden Products*

Paving, Edging, Ornaments, Bird Feeders, Planters, Trellis,  
Nest Boxes, Pot Hangers, Picnic Benches and much more

**A limited range of Pot Plants  
for your Garden, Planters, and Pot Hangers**

**Tel: 01223 420669**

www.phoenixtrust.org Unit 8, Milton Trading Estate

*Supported work experience for people with learning difficulties*

### SILVER SERVICE TAXI

*Licensed Taxi Service,  
Reliable, Local & Friendly*

**Ian May**

**07989 197816**

Email: [silverservicetaxi@gmail.com](mailto:silverservicetaxi@gmail.com)

**Multi-Seater 1 to 8 passengers  
Airport & Group Bookings welcome  
Specials Needs & A Speciality**

[www.silverservicetaxi.co.uk](http://www.silverservicetaxi.co.uk)



# From the Archives

*10 Years Ago: Apr 2005*

## Tsunami Appeal

We have now raised  
**£15,591.13**

**Each box cost £490**

You can see us on the Shelterbox website listed under M as **The people of Milton Village, Cambridgeshire**. See the new shelterbox web site at

[http://home.btconnect.com/Shelter Box/](http://home.btconnect.com/ShelterBox/) where you will be able to find the latest updates (reflecting the status at around the beginning of April).

Since our last report Milton Primary have held fund raising events and boosted our funds. Also the staff at Boots headed by a Milton lady raised £1,000 and sent it to us to purchase shelterboxes.

Thank you to everyone

The Account is now closed but any future fund-raising can be channelled through All Saints Church.

*25 Years Ago: Mar 1990*

## Pram Race in Progress

Competitors leaving the second watering hole on the inaugural Village Pram Race.

A number of cometiitors had problems keepng on four wheels which had nothing to do with the drinking but more to the lack of stability in their conveyances.

A good turn out by the Villagers ensured a hearty send off after interviews by Radio Cambridgeshire.

The eventual winners were the landlords of the Jolly Brewers and Lion and Lamb.

Obviously their wheels were well oiled!!?



## C H LUMB

(BUILDERS)

**DRAINAGE - GUTTERING  
UPVC FACIAS & SOFFITS  
PATIOS & FENCING  
ALTERATIONS**

**01223 354402**

**Mobile 07762026290**

## Amethyst Caravan Holidays

**Static Caravans available to  
rent at Manor Park  
Hunstanton**

**Tel: 07795 087907**

Email:

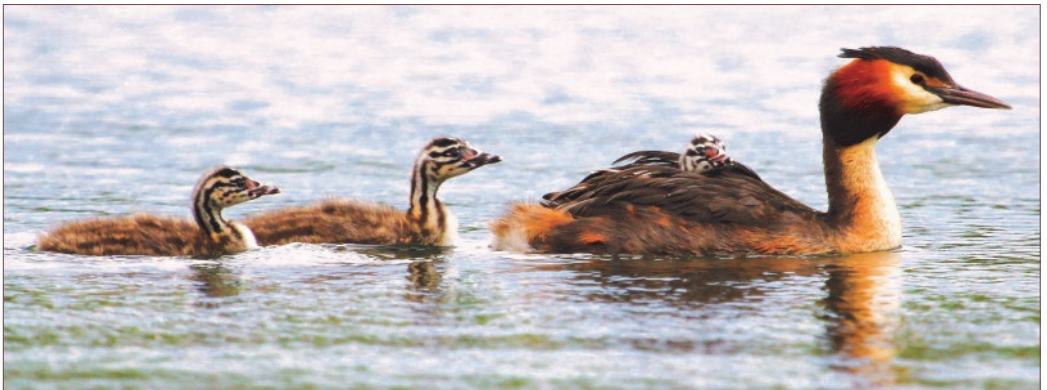
[amethystcaravans@hotmail.com](mailto:amethystcaravans@hotmail.com)



Above: Mayflower 61306 at Milton level crossing , Elizabeth Oldham



Above left: Sunrise over Milton, Dawn Eagle  
Above right: Kingfisher in the Country Park, David May  
Below: Grebe and her chicks, David May





## Summer Fayre, Sat 11th July from 1.30pm

All ages catered for at this year's Milton Summer Fayre: teens water slide and adults watering holes; children's dance events; martial arts demonstration; the amazing Cambridge pole fitness display; the wonderful W.I. cafe, of course; live music from local bands ... and Milton's own very wonderful EJ Allen of 'Let the Geek Out' as our guest MC.

If all that wasn't enough - we will be announcing more surprises in the coming months! Please 'like' us to keep up with news: [www.miltonfayre.uk/like](http://www.miltonfayre.uk/like)

**Stallholders: it's time to book your stall:** Please return the form opposite with cheque payable to MILTON VILLAGE FAYRE by **27th June 2015** to Milton Community Centre, Coles Road, Milton, CB24 6BL.

OR book online: [www.miltonfayre.uk/book](http://www.miltonfayre.uk/book) (form can be completed on website)

**Can you spare us an hour to help on the day?** Come and join the fun of volunteering at the fayre - just an hour of your time will help the entire village and you'll have some fun with us at the same time! Please see here for more details and please join us in the fun: [www.miltonfayre.uk/help](http://www.miltonfayre.uk/help)

### Stall Information

A pitch is four meters wide (13 feet) and one trestle table can be supplied per pitch (chairs are not provided) OR you may bring your own gazebo and equipment. If your stall has any other requirements please add a note to the booking form asking for us to contact you to discuss. To assist in clearing up after the Fayre please:

- Return tables (cleaned) to Community Centre rear entrance
- Use the bin bag/s provided and place any rubbish in the skip by the garage
- For the safety of all attendees no vehicles in the arena between 1pm and 6pm
- Please note, all stalls to be set up by 12.30pm and close at 6pm

### Need glasses?

Save money, buy direct from ALL EYES Specs

Complete specs from only £9.00!\*

- Repairs & emergency specs\*
- Reglaze your own specs\*
- Complete sunspecs from £49.00\*
- Specs for all sports
- Excellent customer service



\*T & C's apply.

Just bring your new prescription to:

ALL EYES Specs Makers

20 Norman Way Ind. Park

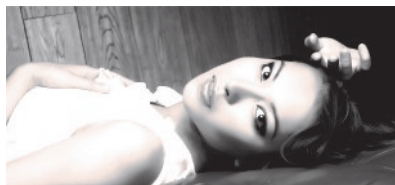
Over, Cambridge CB24 5QE

Tel: 01954 231545; 07824 706969

Mon - Fri; 9am to 5pm

(PLEASE RING FOR AN APPOINTMENT)

[www.all-eyes.co.uk](http://www.all-eyes.co.uk)



# Summer Fayre Booking Form

13

Charity/company/organisation **name**:

Details of stall/activity **description**:

**Number of pitches** required: (circle) 1 2 3 4 (one pitch is 4m wide by about 3m)

**Does your stall/activity have special requirements and you would like us to contact you?** Yes / No

**Price** per pitch: (circle) £10: Milton Charity £20: Milton non-Charity £35: non-Milton

Do you require a **trestle table**? Yes / No (one table can be supplied per pitch)

Contact **name**:

Contact **telephone number**:

mobile:

Contact **address**:

**Additional notes/queries**:

Please confirm that you have read and accept the terms at [www.miltonfayre.uk/terms](http://www.miltonfayre.uk/terms)

Please note: there are no refunds and all bookings are subject to acceptance by Milton Fayre.

Signed:

print:

✂

## Another Litter Picking Story....

In February a gallant band of Litter Pickers braved what I can honestly say seemed like the worst weather ever (freezing cold, rain AND wind) to tidy up the village.

Robin, Anna, Jo, Anne, John, John and Elaine, David, Jamie, Pauline, Judith, Roger, Dianna and Peter all scoured various parts of the village and collected about 20 bags of rubbish.

I note that Clive Betts MP, chair of the Communities and Local Government Committee has recently recommended introduction of a national litter strategy to deal with the problem of litter, before struggling local councils become overwhelmed. I wholeheartedly agree.

Anna Bradnam

### AFFORDABLE STORAGE

- ✓ SECURE STORAGE
- ✓ FLEXIBLE HIRE PERIODS
- ✓ COMMERCIAL & DOMESTIC
- ✓ RANGE OF SIZES AVAILABLE
- ✓ OFFICE & RETAIL
- ✓ 24 HOUR ACCESS
- ✓ EXCELLENT STORAGE
- ✓ CCTV MONITORED
- ✓ PICK-UP / DELIVERY SERVICE

**01223 420440 / 07711 084164**

email: [mwheeler.bromley@btoopenworld.com](mailto:mwheeler.bromley@btoopenworld.com)

UNIT 105, NORMAN INDUSTRIAL ESTATE, MILTON, CAMBRIDGE, CB24 6AT

### R.B. Electrical LTD

### N.I.C. Registered

**Your Milton Domestic  
& Industrial Specialists**  
**25 Yrs Experience**

**Tel. 365200**

## Milton WI

In *January*, we welcomed Marian French who spoke on The Social History of Cambridge. In 1972 she was the first lady Hackney carriage driver in Cambridge, reminding us of Pyes, Laurie & McConnell's and Mitchams, at Mitchams Corner of course, Town & Gown with its problems, the first women graduates, and the first 'talkie' film in Cambridge in 1929, *The Broadway Melody*. *February's* meeting hosted Peter Jackson from Scotsdales Nursery and Garden Centre. He introduced us to some beautiful winter flowering shrubs and plants, and explained about thinning and pruning.

In *April*, Lucy Lewis will be speaking about her life in the army as the first female bomb disposal expert and in *May*, Stephen Poyser on Honey from Flower to Table. *June* would appear to be an intriguing meeting with Clare Mulley talking on The Spy who Loved: secrets and lives of Christine Granville.

Our two darts teams, the May Bs and Might Bs, have been practising for their first matches this year. The May Bs will be playing Over WI on 20th March (Over Community Centre) and the Might Bs will be playing Lode WI on 7th April (at home at the White Horse).

New members are always welcome, and anyone can come along for a taster before deciding whether to join. Contact our President Gill Offley (01223 293231) or Secretary Bridget Crow (01223 441755) for further details, or just come along. Meetings are on the third Tuesday of each month at 7.30pm in the Church Hall.

Anne Newman

## Cambridge Gliding Centre Open Day, 12th April

Come and visit Gransden Lodge Airfield on Sunday 12th April 10am-4pm to find out about the sport of gliding. All welcome with free admission. Trial flights with our qualified instructors available on a first-come, first-fly basis. Refreshments available.

The airfield entrance is on the B1046 between Little Gransden & Longstowe, opposite Gransden Lodge Farm (enter SG19 3EB into your Sat Nav). More information at [www.camgliding.uk](http://www.camgliding.uk)

Andrew Watson

### PHYSIOTHERAPY

Treatment for sports injuries, back and neck pain, joint problems etc.

**Liz Cradock** MCSP, MIGHT  
Chartered Physiotherapist and  
Reflexologist, HPC registered

*Recognised by major medical insurance companies*

Treatments at:

'Wellbeing at 17', 17 High Street,  
Waterbeach CB25 9JU

**Tel: 01223 860928 Mob: 07714 052389**

**Email: [liz.cradock.physio@gmail.com](mailto:liz.cradock.physio@gmail.com)**

### STRIKE FIT

Fridays 1pm-2pm

Milton Community Centre

also available

**1 to 1 personal training**

Contact : Alex Campbell

Tel. 01223 862184 or 07746  
122749

Email [alex@alexercise.co.uk](mailto:alex@alexercise.co.uk)

[www.alexercise.co.uk](http://www.alexercise.co.uk)



## Milton MU

So far we have run two most successful Lent lunches which have been very well attended. (Four more to go!). Rev Dr Alex Hughes, Archdeacon of Cambridge was our speaker at Lent Matters 2: My Faith, My Life.



### Forthcoming events (held in the Church Hall)

- Tues 6th May at 7.30pm: Gary O'Shea speaking about his work
- Sat 13th June at 2.30pm: Strawberry tea

"The Mothers' Union unites Christians of all ages across the world. Through praying, campaigning and volunteering, members strengthen marriage and family life and bring about positive changes in their communities. Membership is open to anyone who has been baptised and who will support our aims and objectives. You don't have to be a mother; you just have to believe in the importance of strengthening family life within society".



Jacqueline Metcalfe

## Heavenly ExChange

We are thrilled to announce a VIP will attend our next gathering in the Community Centre. He is the happiest man alive, who loves to make others happy. He is known for his extravagant giving, love of science and nature, and he reconciles and restored relationships. That's right I am talking about Jesus Christ who loves every single person.

We enjoy the happy gospel, a relationship with Papa God, Jesus and Holy Spirit, who are always ecstatic to see us and always eager to spend time talking with us. There is no attendance fee, but a word of warning: if you're looking for religion you won't find that with us, but everyone is more than welcome. Look forward to seeing you: the next gathering is in Milton Community Centre at 7pm - 10pm: next date is 18th April.

Leona, Anthony and the Heavenly ExChange clan, [www.heavenlyexchange.org.uk](http://www.heavenlyexchange.org.uk)

1863  
*Philibert Rostin*

@ milton post office

**Segafredo**  
ESPRESSO

coffee

# postino

The Post Office, 2 Coles Road, Milton, Cambridge, CB24 6BW

[postinocoffee.com](http://postinocoffee.com)

# Cambridgeshire Neighbourhood Watch

There has been much talk about recent crime in Milton and references made to joining NHW by way of helping the community stay safe. NHW comprises people who care about their environment and who actively work with the police in order to keep it safe.



## Why is NHW directly messaged by the police?

The police have recognised this commitment to be active and target their messages to give NHW members as much detail as they can to assist them in the prevention and the solving of crime. They are sent through the Alert system to Street Coordinators who have been police checked.

## Why are these messages sometimes very different in content from E-Cops?

E-cops is a social media message that is for the public realm. When sending such a message the police have to consider the effect of that message upon the unknown receiver: that criminals may pick up this message; that people receiving the message are interested but may not be committed to actively work with the police.

## How is Milton NHW organised?

Milton has eleven street coordinators and one more awaiting police check. They each have an email list of their members to whom they forward police NHW messages and who they encourage to be active within their community. As Histon Policing Area Coordinator I support them as much as I can. Milton does not however have a Village NHW Coordinator to bring together the work of coordinators and to see the overall Milton picture. Most villages do have a coordinator and this delivers the most effective service.

## I want to make a difference: how do I do that?

E-mail me. I can arrange for new coordinators to be registered and checked. I can assist a volunteer to commence the role of Village Coordinator. For more NHW information, visit [www.cambsnhw.org.uk](http://www.cambsnhw.org.uk); for information about local crime, visit [www.police.uk/cambridgeshire/SCambs\\_Histon/crime/](http://www.police.uk/cambridgeshire/SCambs_Histon/crime/)

Area Coordinator Polly Wilderspin, [polly.wilderspin@btinternet.com](mailto:polly.wilderspin@btinternet.com)

## Swedish Massage



Contact Alex Campbell on 01223 862184  
or 07746 122749  
email: [alex@alexercise.co.uk](mailto:alex@alexercise.co.uk)

Benefits include\*:

- Relief from Stress, Anxiety and Tension
- Feelings of Deep Relaxation
- Improved Mood
- Improved Sleep
- A general sense of Wellbeing

Appointments available in Milton & Chesterton  
Sports Centre, Gilbert Road, Cambridge

\* Massage should not be used in place of conventional medical care. Always consult a GP or other Health professional for medical attention and advice.

## Matthew Harney

General Building Work  
Painting & Decorating

[matthew.harney@btinternet.com](mailto:matthew.harney@btinternet.com)

Tel: 01223 696508

Mob: 07962 398114



## 1 Mountain, 3 Worthy Causes and 6 Days Later....

On the 5th February 2015, Howard Scarborough and I left for Tanzania to climb Mt Kilimanjaro (5,895m or 19,340ft). Our adventure started with a team meeting on the 7th February before departing the next day from the Machame Gate. During the next 6 days we covered some 90km, from a starting altitude of 1,800m to 5,895m. Our longest day was both physically and mentally challenging, with 27km covered in just 22 hours. We arrived at the summit of Mt Kilimanjaro at 7.25am on the 12th February, having ascended 7km through the night: three of our group did not make the summit.

The group we travelled with were supported by 35 amazing porters who carried all the kit and food we needed during our time on the mountain. These guys were encouraging us all the way, especially when it got really tough. They even found time to bake a birthday cake for one of our group at 4,000m: a definite 'technical challenge' by the standards of the Great British Bake Off!

To date we have raised **£2,760** for three worthy causes, so to all those that have donated generously – thank you. We would like to achieve the £3,000 milestone, so if you would like to make a donation, visit: [fundrazr.com/campaigns/4rVI7](http://fundrazr.com/campaigns/4rVI7)

Gary O'Shea



travel counsellors



With us...it's personal

### MILTON VILLAGE TRAVEL AGENT MR ELI KARRAM

IATA and ATOL Member

I can book any holiday you may have seen elsewhere  
Generally more choice and flexibility than available online  
No limit on booking size Business travel UK and abroad  
Everything financially protected, including flights only  
27 years experience No obligation quotations

01223 855290 or 07963 841 679 any time

[eli.karram@travelcounsellors.com](mailto:eli.karram@travelcounsellors.com)  
[www.travelcounsellors.co.uk/eli.karram](http://www.travelcounsellors.co.uk/eli.karram)

2014 awards: Queen's Award for Enterprise

## Sports Therapy Services

Sports Massage and Injury Rehabilitation



Don't put up  
with the pain

SAVE 25% on your  
first appointment

Additional offers available

call Lesley on 07940 110309  
or visit

[www.sportstherapyservices.co.uk](http://www.sportstherapyservices.co.uk)



## Around the Pubs

# White Horse

Tel: 01223 860327

We have added 6 new real ale pumps, and come and check out our new restaurant area for 32 people.

Benches are out ready for the nice weather!

Happy Easter from all at the White Horse.

Follow us on Facebook: [www.facebook.com/whitehorsemilton](http://www.facebook.com/whitehorsemilton)

*Ava & Alan*

### HOWARD'S WAY School of Motoring

**Manual & Automatic Cars**

- Male and Female Driving Instructors
- Pass Plus Courses
- Intensive Courses
- Instructor Training
- Theory & Hazard Perception Confidence / Refresher
- Patient and Friendly
- Top Grade 6
- Motorway Courses

### HOWARD'S WAY WINDOWS

- Window Cleaning by Request
- Milton, Waterbeach, Landbeach
- Pubs, Clubs and Offices

T: 01223 440767 M: 07753 617310  
E: [hcradock@btinternet.com](mailto:hcradock@btinternet.com) [www.h2way.com](http://www.h2way.com)

## Lee Beamiss Carpentry & Building

**Tel 01223 440001**

**Mobile 07815 118339**

web site [www.leebeamiss.com](http://www.leebeamiss.com)

email [enquiries@leebeamiss.com](mailto:enquiries@leebeamiss.com)

All your re-upholstery needs  
"COVERED"

## S. PROCTOR

### UPHOLSTERY

Antique & Modern  
Domestic & Commercial

Foam Cut To Size  
D.I.Y. Sales

Family Trade Since The 1940's

**TEL: 01223 440430**

Email: [sproctorupholstery@gmail.com](mailto:sproctorupholstery@gmail.com)

C2 BUTTON END IND EST, HARSTON, CAMBRIDGE, CB22 7GX

## MILTON ANTIQUES AND COLLECTABLES

Offering a wide range of items  
Clocks, China, Glass,  
Brass, Copper, Silver plated articles  
Costume jewellery, small pieces of furniture  
Musical instruments and much, much, more

**363 The Rowans Milton Cambridge**

**Tel No. 01223 860061**

**Mob: 07771620752**

**We also purchase good quality items.**

## Lion & Lamb

Tel: 01223 860202

**Ahoy matey!** The patio and play area are now open daily from 10am. Savour a fresh Barista coffee al fresco and relax while the children let their imagination run wild in the fabulous Pirates Lagoon!

### Forthcoming events

**Lion & Lamb 4<sup>th</sup> Annual BEER & CIDER Festival** takes place on **Thursday 21st to Bank Holiday Monday 25th May**, with approximately 40 real ales and ciders available. Live Music on Saturday from **The Woodleys** and **Dale Taylor**, more music on Sunday evening too! Hog Roast & BBQ over the weekend. We hope to see you in the beer tent!

**BOOGIE NIGHTS** with DJ Chris Light – Good Friday 3rd April from 9pm

**EASTER SUNDAY LUNCH** with Easter Egg Hunt – Sunday 5th April 12-7pm

**LADIES DINNER CLUB...** Tuesday 7th April ***“Forever Living!” with Sarah.*** Tuesday 5th May ***“Summer Cocktails” with Lawrence.*** Tuesday 2nd June ***“B-Yourself” with Bev Briggs.***

**PSYCHIC SUPPER** on Wednesday 15th April and Wednesday 27th May.

Don't forget to book... **Father's Day Lunch** on Sunday 21st June – 12-7pm.

Full details of all events can be found at on our web site. We look forward to welcoming you...

Lawrence & Sally [www.lion-lamb.co.uk](http://www.lion-lamb.co.uk)

---

## Jolly Brewers

Tel: 01223 863895

Open all day every day from 12 noon - earlier openings can be arranged for group meetings or get togethers - please ask. Restaurant opening times available online: try out the newly refurbished restaurant/bar for a cosy and less formal dining experience complete with new seating and layout. Call in and see for yourselves!

Watch the football and rugby on Sky and BT Sports, accompanied by an aptly-named ale or two, and with the better weather coming, the garden will be open for business!

### Forthcoming events and Themed Restaurant Evenings include:

Wednesday 25th March - Provençal Night (Classic French Cuisine)

Sunday 5th April - Easter Sunday Lunch

Wednesday 15th April - Classic Chicken Dishes

Wednesday 13th May - Steak Night

Saturday 23rd May - Jolly Brewers 3rd Birthday Party - Late Bar and Disco featuring sounds of Ska, Reggae and 2-Tone. Thank you for all your support over the last year!

For all regular offers on dining and accommodation check out the website:

[www.jollybrewersmilton.co.uk](http://www.jollybrewersmilton.co.uk)



**YOUR PROPERTY LOOKED AFTER AS IF IT WERE OUR OWN**

**LETTINGS  
LETTINGS  
& LETTINGS,**

**IT'S ALL  
WE DO,  
7 DAYS A  
WEEK**

Lettings and  
Property Management  
Specialists  
Over 30 Years  
Experience in the  
Cambridge Lettings Market  
24/7 contact

Direct line to Jo Clark  
**07976 463 944**  
Direct line to Nicola Webb  
**07896 352 160**  
Office 01223 967277  
or 01954 214441  
[www.letsrentcambridge.co.uk](http://www.letsrentcambridge.co.uk)  
[info@letsrentcambridge.co.uk](mailto:info@letsrentcambridge.co.uk)



Lettings and  
Property Management  
Specialists



**Zoopla.co.uk**



## Landbeach and Milton Baptist Church

### Sunday Services

- 10.30am Family Service
- 6pm Evening Worship

### Midweek Home groups

- Tues 7.30pm, Landbeach
- Thurs 10.30am, 143 Waterbeach Rd.

All are welcome to our small but friendly fellowship. Further details from Maureen Clark, tel 01954 250118

### EMPLOYMENT OR FAMILY PROBLEMS?

- \*Settlement Agreements\*Unfair Dismissal\*
  - \*Discrimination\*Breach of Contract\*
  - \*Divorce\*Children Disputes\*
  - \*Financial Settlements\*Separation Agreements\*
- FREE INITIAL ADVICE**

**SMITH  
MAY  
SOLICITORS LLP**

Barnwell House, Barnwell Drive,  
Cambridge CB5 8UU

**BRIDGET GILTINANE – Family Lawyer**

[bridget.giltinane@smslaw.co.uk](mailto:bridget.giltinane@smslaw.co.uk)

**JOANNE MAY – Employment Solicitor**

[joanne.may@smslaw.co.uk](mailto:joanne.may@smslaw.co.uk)

**CALL 01223 415372**

**FREE PARKING**

[www.smslaw.co.uk](http://www.smslaw.co.uk)

### Sunday services



### Midweek groups & events

#### 8am Holy Communion

A quiet, reflective way to start the day.

#### 10.30am Morning Worship with Children's Groups

Designed to cater for the whole church, from ages 0-100+. Refreshments served.

#### Evening Services

See website.

Little Rainbows Toddler Group, Parents & Under 1s, Lunch Club, Mothers' Union, Stitchers' Club, Reading Group ...

For full details of all these and more please visit:

**[allsaintsmilton.org.uk](http://allsaintsmilton.org.uk)**

## Wildlife Notes

I am reminded of an article written by Simon Barnes, where he suggested that we needed a new conservation movement: the Society for the Preservation of Nothing Very Special. In my opinion, Fen Road is one of those Not Very Special places; it's not a nature reserve, it's the road to the river, and used by many on two wheels for commuting, but there is so much more to see.

What reminded me of this was three sightings in one week of a bird that's really quite hard to spot. It's not particularly rare, but very secretive and easier to see in winter: the water rail. It was in the right place, freshwater wetlands: the ditch along the Fen Road, skulking in the reeds. I suspect it's not a resident but is an individual from the continent spending winter here, a bit like the little grebe I've seen several times in the same ditch. The other day's offering was a grey wagtail, and a heron can often be seen in the same place.

I note Derek Booth's sighting of a buzzard closer to the village from the last Village View. I've still not seen it despite trying to keep alert. I've had very reliable reports that the barn owl is alive and well and has been seen several times by others. I finally saw it myself on a very early cycle to work around twenty minutes before sunrise on a very gloomy morning.

In the bit of the road that could be called properly in the village, I've heard a great spotted woodpecker in the more mature trees several times. Where there are houses on only one side of the road, the other side is a fantastic hedgerow with masses of ivy and thicket. It's always a chatter of birds there, and is worth stopping and listening if you have the time.

Down below the railway, I've already heard the yellowhammer calling in very late February: will it stay and nest? I fear not; it's a bird that lives on spilt grain, so potatoes or maize are probably not to its taste. Could we persuade the farmer to initiate a small agri-environment scheme, namely to plant a margin of grain left unharvested, specifically for this very endangered bird, at the edges or corners of the field near to the bushes by the road and railway where I've heard these birds sing many times in the past?

*Heather Coleman*



**AG First Aid  
Training**

**Amelia Grant**  
**First Aid Trainer Instructor**

31 Old School Lane

Milton, Cambridge

[ameliagrant@btinternet.com](mailto:ameliagrant@btinternet.com)

<http://www.agfirstaidtraining.co.uk>

07795680733

*Luxury  
therapies  
at affordable  
prices.*

**No27**  
**THERAPY ROOM**  
Tracy Wesson  
Holistic Therapist

27 Fen Road · Milton · Call 01223 501534  
[WWW.NO27THERAPYROOM.CO.UK](http://WWW.NO27THERAPYROOM.CO.UK)

**20% OFF**  
all treatments  
on your first  
booking



## Milton in 3D

Iain has written to point out that Google Earth ([www.google.com/earth/](http://www.google.com/earth/)) now offers 3D buildings for Milton. Just visit Milton and make sure you've got the "3D Buildings" layers selected. It's really very cool. For the benefit of those of you without access to Google Earth (and it really is worth getting, it's free) here is a screen capture of the Community Centre, Surgery and part of Coles Road. There is also a video showing a tour of Milton at [www.milton.org.uk/news/opus3029.html](http://www.milton.org.uk/news/opus3029.html).

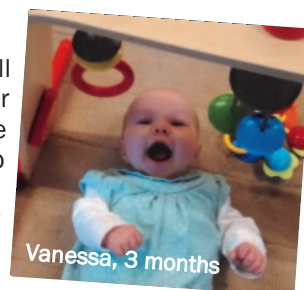


By the way, if you do have Google Earth then check out our World War II photo overlay, at: [www.milton.org.uk/history/ww2](http://www.milton.org.uk/history/ww2).  
Paul Oldham

## New Parents

If you've had a baby in 2015 then head down to the Church Hall on a Wednesday, 2-4pm. *Parents and Under 1s* is a free group for anyone whose baby isn't yet walking. Tea and chat are available and there is a large range of toys. Your baby can feed or sleep and there are changing and bottle-warming facilities. There is also a new Facebook group for parents of children under five. Join at [www.facebook.com/groups/miltonunder5s](https://www.facebook.com/groups/miltonunder5s)

Elizabeth Cook



## PHYSIOMOBILE

**Sarah Koets BSc MCSP MAACP**

Registered with the Health and Care Professions Council

- Back and neck pain
- Sports injuries
- Post operative rehabilitation
- Arm, hand and shoulder problems



- Hip, knee and ankle pain
- Repetitive strain injuries
- Postural problems

Self referral accepted Recognised by all major insurers

Milton Surgery, 87 Coles Road, Milton, Cambridge, CB24 6BL

**07790 512094** - [www.physiomobile.co.uk](http://www.physiomobile.co.uk)

Also at: Fen Ditton and Girton

## Our Other Roman Road?

The boundary separating Milton and Impington is defined by the Roman road Mere Way. However it is likely that we had a second, minor Roman road in Milton, connecting the Mere Way with the river Cam. A few weeks ago while walking from the Park & Ride, as I came down the slope onto Butt Lane and looked into the far distance, I noticed the coned top of a tall metasequoia tree beyond the white cottage on the High Street facing Butt Lane. This tree is in the front garden of a bungalow on the corner of Goding Way and Fen Road and is directly in line with Butt Lane. The tree suggests a (likely Roman) road went straight from the Mere Way to the river Cam for the passage of people and goods.



This was before the village of Milton expanded after the Norman Conquest in 1066 and, by the present day, all traces of this road would have become obscured by farmland and houses. Residents in houses on Coles Road immediately south of the shops, or living in the middle of Hall End, may come across hard packed gravel in their garden indicating the remains of a Roman road. Please let me know if you reveal anything like this: you could be discovering more hidden history in your village!

*Derek Booth,  
Parish Archaeological Warden,  
booth30@btinternet.com*

## GJK Accountancy Limited

**Accountancy services**  
**annual and monthly accounts**  
**bookkeeping**  
**VAT and tax returns**  
**Company formations**

griffith.kinsman@ntlworld.com  
30 The Rowans, Milton, CB24 6YU  
Mobile 07710 503 148

## Curry & Pizza

Selling delicious...

- ◆ Curry
- ◆ Southern Fried Chicken
- ◆ Burgers
- ◆ Pizza



6B High Street, Milton, Tel: 861948

## Dance, Movement and Storytelling for Children

Through lively classes we invite children to participate in stories and movement in order to encourage independent thought and enquiry. Our material is lively, educational and creative, encouraging both group interaction and individuality.

### Classes on Friday afternoons at Milton Primary

3.30pm (2-4 years) and  
4.15pm (4-7 years)

We also run workshops in the holidays and Children's Birthday Parties!

Tel. 07837844759

michelle@creativemovements.co.uk

www.creativemovements.co.uk

www.facebook.com/cambridgecreativemovements





**Milton Rangers U6 team**

This year's Milton Rangers U6s training hard and having fun while preparing for next season's league football at Milton Primary School. Have a child, boy or girl who would like to join them for **fun, fitness and football**? Then pop down on a Saturday morning and let their FA-trained coach help them.

They are looking for sponsorship to further their progress and looking for managers/coaches to take on next year's U6s. If you are interested please contact [steven.ayms@tesco.net](mailto:steven.ayms@tesco.net) or Steve Aym's 01223 861584.

## Milton Tennis Club

Our first 'official' club night this season will be on 1st April from 6pm: if you are a tennis player do come along any Wednesday club night for a taster session.

Application form, details of tournaments, matches and social events are available at [www.miltontennisclub.co.uk](http://www.miltontennisclub.co.uk). This is the first year that Milton Tennis Club members will be playing in the LTA leagues so if you are a keen tennis player, do join us! Also, all current members of MTC can register as British Tennis Members free with the LTA ([www.lta.org.uk](http://www.lta.org.uk)) and have a chance of Wimbledon tickets through our ballot.

*Sue Griffin, Secretary*

# Godden Auto Services Ltd

*Benet Garage, Cambridge Road, Milton, Cambridge, CB24 6AW*

**Servicing and repairs  
to all makes of vehicles**

**MOT TESTS WHILE YOU WAIT**

**By appointment only**

**[www.goddenautoservices.co.uk](http://www.goddenautoservices.co.uk)**

**All major credit cards accepted**

**Tel: 01223 420380**

**Opening times: Monday to Friday 8.30am—5.30pm, Saturday 8.30am—12.30pm**