



[www.mvv.org.uk](http://www.mvv.org.uk)

# Milton Village View

Issue No. 118 – May 2015

## In This Issue...

- IVC School Bus Campaign
- Denny Abbey Season Ticket
- Sewage Works Update
- Pyramid Rock Holiday Club

*And much more!*



Gog Magog Molly at the EACH Gala Day, Mary-Ann Johnson

# Contact Us

Send us your news and photos:

**vv@miltonvillage.org.uk**

1 Knights Way, Milton, CB24 6DE

Deadlines for articles are:

**12th January**

**12th March**

**12th May**

**1st September**

**1st November**

Issues will be published approx.  
2 weeks after the dates above.

## Online Archive

Find back copies of Village View  
(back to April 2011) on our website:

**milton.org.uk/mvv**

Printed by Langham Press Ltd.

**Delivered Free  
Circulation 2,000**

### Publisher's Notice

Whilst every effort is made to ensure accuracy the publisher accepts no responsibility for errors or omissions. Views and opinions expressed in the Village View are not necessarily those of the publisher or the editorial staff. The publisher does not accept any responsibility for claims made by advertisers.

## Open Farm Sunday - 7th June

The College of West Anglia's Cambridge campus is throwing open its doors for an open day that promises something for everyone, as part of National Open Farm Sunday.

Come and explore our Woodside farm and equestrian centre, and meet our animals and horses, enjoy some equine displays, ride the horse simulator and see our state-of-the-art equine therapy centre.



There will also be competitions and a chance to tour our companion animal centre. Why not get up close and personal with everything from ferrets to snakes, rabbits to chinchillas, alpacas to tarantulas?!

For those interested, there will also be a team on hand to provide course information and advice, offering guidance on the best way to achieve your career goals.

There will also be bedding plant sales, quad bike demonstrations, tractor tours and much more.

The campus, on **Landbeach Road, Milton**, will be open from **10am to 3pm** and **both parking and admission is completely free**. Come along and enjoy a wheelie good day out!



If you use our advertisers, please mention Village View. Thank you to our volunteer distributors.



## June

**Sun 7th**  
**Fri 12th**

**Open Farm Sunday**, College of West Anglia, 10am-3pm (p.2)  
**'Music and Mayhem'** music & cinema, Country Park, 7.45pm  
See [thelittleboxoffice.com/summersmash](http://thelittleboxoffice.com/summersmash) to book.

**Sat 13th**

**MU Strawberry Tea**, All Saints' Church Hall, 2.30pm  
*Enjoy the early summer with a scrumptious strawberry cream tea. All welcome.*

**13th/14th**

**'A Celebration in Flowers'** Landbeach & Milton Baptist Church (p.5)

**Tues 16th**

**NCT Coffee Morning**, Country Park Café, 10am (See below)

**Sun 21st**

**'Fruit of the Spirit' Messy Church**, All Saints', 3.30-5.30pm



## July

**11th July**

**Milton Summer Fayre**, 1.30pm onwards (p.11)

**11th/12th**

**Open Studios**, 11am-6pm (p.4)

**18th/19th**

**Open Studios**, 11am-6pm (p.4)

**Sun 19th**

**Parklife**, Try new sports for free, Country Park

**Sun 26th**

**Family Angling Open Day**, 10am-4pm, Country Park



## August

**Sun 2nd**

**Summer Smash**, New family-oriented music festival, Country Park

**18th-21st**

**'Pyramid Rock' Holiday Club**, All Saints', 10-12am (p.5)

**Thurs 20th**

**GoTri Cambrige**, Mini triathlon for beginners, Country Park

**Thurs 27th**

**Robin Hood**, Cambridge Touring Theatre, 3pm, Country Park

## September

**Sun 6th**

**Footprints Memory Walk**, Country Park

**Sun 13th**

**CAMSAR World Record Hide and Seek Attempt**, Country Park, 2-4pm

**Sun 27th**

**Autumn Festival/Produce Show/Fun Dog Show**, Country Park

See pp.22-23 for more events at the pubs.

See [www.milton.org.uk/diary.html](http://www.milton.org.uk/diary.html) for more event details.

See [www.miltoncountrypark.org](http://www.miltoncountrypark.org) for more park event details.

## Parents & Under 5s NCT Coffee Morning

Calling parents and carers of children under 5 years of age and parents-to-be! Milton volunteers for the National Childbirth Trust (NCT) are holding a coffee morning at Milton Country Park at 10am on Tuesday 16th June. Come along with your little ones, meet other parents and talk about life as a parent of young children in Milton: what is good and what could be improved.



If you can't attend on the day but would be interested in or have any ideas for postnatal support, such as planned activities, social gatherings, babysitting circles or any other ideas, please email me on [ehb102@hotmail.com](mailto:ehb102@hotmail.com). Similarly, if you have a service or resource for children you would like to share, please contact me.

Liz Cook

## Cambridge Open Studios 2015

The artistic community in Milton is expanding with three new people taking part in the village this year, joining Alison Hullyer, Chris Thomas and Pam Paterson. So look out for the yellow flags springing up all over the village in July.



We have jewellers **Cheryl Bird** and **Linda Bartlett** showcasing their beautiful silver and gold jewellery inspired by nature and incorporating pearls and semi-precious stones. Their work can be found at the studio in the garden of 6 Cambridge Road.

In Hall End, off Fen Road, **Chris Thomas** will be showing his dazzling photographs taken through a microscope, with postcards and prints available. His daughter **Louise Thomas** is showing her unique patchwork pieces and will have quilts and everyday items on display. Also in Hall End is professional illustrator and printmaker **Alison Hullyer**, showing her new bird themed drypoint prints and her wonderful range of screen printed tea towels, coasters and cards.

All their studios are open to the public on the weekends of **11th & 12th** and **18th & 19th July**, from 11am until 6pm.

**Pam Paterson** is taking part in Open Studios for the second time and is open all four weekends in July. With over ten years experience of bead weaving, visit her studio at 2 Mansfield Close, to see her jewellery and other items.

You can pick up free guides, which include a map showing over 300 artists taking part, from the Post Office, Community Centre and many other places. To find out more, see:

[www.camopenstudios.co.uk](http://www.camopenstudios.co.uk)  
[www.hullyer.co.uk](http://www.hullyer.co.uk)

[www.louisespatchworkpatch.co.uk](http://www.louisespatchworkpatch.co.uk)  
[www.divinedecadencejewellery.co.uk](http://www.divinedecadencejewellery.co.uk)



### PAINTING DECORATING GLAZING

Mobile  
07860 453533  
Phone:  
01223 700800  
(local resident)



**B.J. LEONARD**

### Stephanie's MILTON'S UNISEX HAIRDRESSERS

Professional Hairstyling for Men and Women

Telephone: 01223 420526

*Discount for all new clients*

49 Cambridge Road, Milton, Cambridge, CB24 6AW

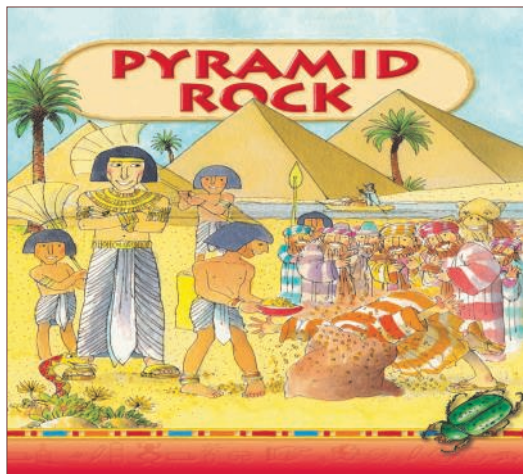
## Pyramid Rock Holiday Club 18th-21st August

Join Dr Potty, Postman Pete and Captain Ketchup for four mornings of songs, drama, fun, bible stories, games, craft, snack and very bad jokes!

10-12am, Tuesday-Friday, at All Saints' church, for Reception — Year 6. £5 per family. Come and join the fun! Followed by a 'Pyramid Rock' special morning service at 10.30am on Sunday 23rd August.

Advance booking (from 4th June) essential:  
[www.allsaintsmilton.org.uk](http://www.allsaintsmilton.org.uk) (booking form),  
call 441007

or email [office@allsaintsmilton.org.uk](mailto:office@allsaintsmilton.org.uk)



*Cows on Ely Road, Heather Coleman*



### HEATING & PLUMBING SERVICES LTD

- GAS SAFE REGISTERED
- Boiler Installation - Gas & Oil
- Complete Bathroom Design and Installation
- Landlords Certificates
- Power Flush
- Tiling
- Under Floor Heating
- Gas Boiler Servicing
- Free Estimates

*\* Covering Cambridge for 30 years \**



**Ph: 01223 242544**

Email: [malcolm.potts@btconnect.com](mailto:malcolm.potts@btconnect.com)  
Unit 8, Ronald Ralph Court, Wadlows Road,  
Cambridge, CB5 8PX



2163

## 'A Celebration in Flowers'

At Landbeach and Milton Baptist Church



**Saturday 13th June:**  
10am - 4pm

**Sunday 14th June:**  
12pm - 4pm

Entrance £2 / Children free  
Refreshments available

All proceeds in aid of  
our church restoration fund

## J.P.Morley Roofing

Est. 1985



**All types of roofing  
Flat roof specialist**

1 Old School Lane, Milton

Home: 01223 863259

Mobile: 07941 198771

[josephmorley@btinternet.com](mailto:josephmorley@btinternet.com)

# Milton Country Park News



The summer is fast approaching and we have already started our Events programme for this year.

There has been a busy birdbox-making day delivered by the Friends of Milton Country Park, along with the very popular Easter Treasure Hunt. Many thanks to the organisers of both those

events, with proceeds going directly to the park!

This last Bank Holiday Monday saw the fabulous "Wookie Walk" in aid of the homeless support charity Winter Comfort. There were lots of mini Luke Skywalkers and Princess Leias, along with some grown-up ones too, taking part!

We are looking forward to many old favourites returning this year, such as the "Wacky Races" raft challenge in aid of the Arthur Rank Hospice and organised by Method Creative, South Cambs District Council's ever-popular "Parklife" event and the park's own Autumn Festival in September.

With some exciting new additions, it is going to be a busy season.

Full details of the park's events programme, including special and regular events, can be found on the website at [www.miltoncountrypark.org/events](http://www.miltoncountrypark.org/events), or alternatively see posters around the site. *[A summary of the summer events is also on p.3 of Village View — ed.]*

See you in the park!



Lorraine Whybrow



**MILTON**gasservices  
your local gas specialist

161938



- Servicing, Installation and Repairs
- Gas Boilers, Fires, Cookers and Central Heating Systems
- Powerflush Cleansing of Central Heating Systems
- Energy Efficiency upgrades
- Landlord Gas Safety Checks and Certificates

**Contact - Eddie Kikas**  
Your Local Gas Specialist

**Tel/Fax: 01223 861810 Mobile: 07831 228181**

Email: [miltongas@btinternet.com](mailto:miltongas@btinternet.com)  
[www.miltongas.co.uk](http://www.miltongas.co.uk)



## Pilates Classes Milton & Landbeach

Mon 9.30am - Mixed Ability Mat Class (MCC)  
Mon 10.30am - Mixed Ability Mat Class (MCC)  
Tues 6.20pm - Intermediate Mat Class (Sch)  
Tues 8.15pm - Mixed Ability Mat Class (Sch)  
Fri 10.30am - Mixed Ability Mat Class (LVH)

Contact Liz on 07768 155278

or [liz.dolman@lovepilates.co.uk](mailto:liz.dolman@lovepilates.co.uk)

NVQ level 3 Pilates & PureStretch Instructor

For further info, visit [www.lovepilates.co.uk](http://www.lovepilates.co.uk)



## Paddleboarding is Back!

South Cambridgeshire District Council are running another programme of paddle boarding in Milton Country Park this summer. Experts say paddle boarding, which involves standing on a board and moving through the water using a long paddle, feels like walking on water because it works on the still surface of a lake. One of the world's fastest-growing water

sports, paddleboarding is good exercise for the whole body and easy to learn. The boards are lightweight but incredibly buoyant and stable.

They are running taster sessions weekly from 30th April to 25th September, weekly courses in April, June and September and advanced three hour "ready to ride" courses six times on various dates from May to



Photo: SCDC

September.

Finally, once you've completed all of these courses you can hire a paddle board and go off on your own.

This is only the very briefest summary of what's on offer. For full details, prices, and how to book visit the Paddle Boarding 2015 page on SCDC's web site:

[www.scambs.gov.uk/content/paddle-boarding-2015-0](http://www.scambs.gov.uk/content/paddle-boarding-2015-0)

*Paul Oldham*

## Harmony

### Hair and Beauty Salon

Expert hair stylists for Men, Women  
and Children.

Beauty therapists offering a wide range  
of treatments.

Chiropody (HCPC Registered). Sports therapy and massage  
(See website for more details)

Gift vouchers available

6 High Street, Milton, Cambridge, CB24 6AJ

[www.harmonysalon.co.uk](http://www.harmonysalon.co.uk)

Call **01223 863636** to book an appointment  
Open 9 - Late Mon - Fri  
9 - 2pm Sat



## Farmland Museum Local Residents Season Ticket

Denny Abbey Farmland Museum, just up the A10, has a "local residents season ticket", which costs less than two visits! These are available at the museum shop, or you can download a form from their web site:

[www.farmlandmuseum.org.uk](http://www.farmlandmuseum.org.uk)

Ticket Prices: Families £17, Adults £8, Concessions £7, Children £5.



## Edmund Trust Trustees



**The Edmund Trust**

SUPPORTING PEOPLE WITH LEARNING DISABILITIES

We are looking for Trustees. Do you have expertise in Finance, Law, Human Resources, Marketing or Business Development? If so, our local charity needs your support.

We are based in Fulbourn, with a site in Milton, and need new trustees to join our board, whose aim is to enhance the lives of people with learning disabilities living in your community.

For more information, visit our website [www.edmundtrust.org.uk](http://www.edmundtrust.org.uk)

Contact Lyn Jenkins General Manager on 01223 883130 for an informal discussion or email [lyn.jenkins@edmundtrust.org.uk](mailto:lyn.jenkins@edmundtrust.org.uk)

The Edmund Trust welcomes applications from all sectors of the community. Successful candidates will be subject to Disclosure and Barring Service checks prior to appointment.

*The Edmund Trust, Edmund House, 9 Church Lane, Fulbourn, Cambridge CB21 5EP  
(Registered Charity No.1030968)*



**ZUMBA®**  
fitness

Dance Fitness Class

**Zumba Classes in Milton 2014**  
**Licensed Zumba Instructor Liz Dolman**

Milton Primary School  
Tuesday Nights 7.15pm  
All Abilities Welcome

Weekly £6 or 5 Session Card Available

For further information  
contact Liz on 07768 155278  
or [liz.dolman@love2zumba.biz](mailto:liz.dolman@love2zumba.biz)

Visit [www.lovepilates.co.uk/zumba](http://www.lovepilates.co.uk/zumba)

## AMBASSADOR LODGE BED & BREAKFAST

37 High Street, Milton, CB24 6DF  
(next to the Waggon & Horses pub)

Friendly, family-run B&B

Contact: Phil or Fizz Turner  
Tel: 01223 860168

[www.ambassadorlodge.co.uk](http://www.ambassadorlodge.co.uk)  
e-mail: [ambassadorlodge@yahoo.co.uk](mailto:ambassadorlodge@yahoo.co.uk)



## Campaign to Save the Milton-IVC Free School Bus

All Milton parents with children at IVC, or in Year 6 of Milton Primary School, were sent a letter by Cambridgeshire County Council at the end of April saying the school bus will be withdrawn at the end of this term, as the route is now considered a 'safe walking route for an accompanied child'. They are not required to provide buses on a route of under 3 miles, (Milton is approximately 2.5 miles) if it is considered 'safe'.

However there are several serious safety concerns:

The narrow shared-use cycle-pedestrian path, lack of street lighting along virtually all of the 50 and 60mph part of the route, the proximity to the road, parts of the path with no kerb or verge and dangerous junctions to cross at the Park & Ride entrance/cut-through road to the A10 to Cambridge direction, and at the Recycling Centre/Landfill Site entrance.

There is no guarantee that there will even be a paid-for bus after the free bus is withdrawn, as the CCC are under no obligation to provide one.

Many parents have appealed against the decision, with the appeal hearing on 30<sup>th</sup> June. It is hoped as many affected parents as possible will go along to the hearing to show the Appeal Panel the depth of feeling in the community about the decision.

A core group of campaigners, with help from parish councillors, has been spending many hours putting together an appeal report which backs up the individual appeals with evidence.

For more information, and downloadable posters, see:

[wiki.milton.org.uk](http://wiki.milton.org.uk)

[www.facebook.com/savethemiltonbus](http://www.facebook.com/savethemiltonbus)

[the-hug.net/cgi-bin/mailman/listinfo/milton-bus](http://the-hug.net/cgi-bin/mailman/listinfo/milton-bus)

Even if you were not eligible to appeal, but have safety concerns / evidence of safety issues / personal experiences or would just like to support our campaign, please get in touch via one of the above webpages.

*Milton Bus Group*



*For all your Concrete  
And Wooden Garden Products*

Paving, Edging, Ornaments, Bird Feeders, Planters, Trellis,  
Nest Boxes, Pot Hangers, Picnic Benches and much more

**A limited range of Pot Plants  
for your Garden, Planters, and Pot Hangers**

**Tel: 01223 420669**

[www.phoenixtrust.org](http://www.phoenixtrust.org) Unit 8, Milton Trading Estate

*Supported work experience for people with learning difficulties*

### SILVER SERVICE TAXI

*Licensed Taxi Service,  
Reliable, Local & Friendly*

**Ian May**

**07989 197816**



Email: [silverservicetaxi@gmail.com](mailto:silverservicetaxi@gmail.com)

**Multi-Seater 1 to 8 passengers  
Airport & Group Bookings welcome  
Specials Needs & A Speciality**

[www.silverservicetaxi.co.uk](http://www.silverservicetaxi.co.uk)

# From the Archives

*10 Years Ago: Jun 2005*

## New Golf Course for Milton



A view looking down the 9th fairway towards the clubhouse

A new 9 hole golf course is close to completion. The course, sited on the north edge of the village opposite the allotments, is due to open in late July. Once the club house is completed there will be a bar and restaurant 'The Cantabrigian' open to non members. There will be pay and play available and currently the owners are looking for 50 founder members. Founder members will pay £350 for a years membership. Usual membership fee £375, concessions £175 and juniors £80 with no joining fee.

Anyone interested can visit the website at [www.parksgolfcourse.co.uk](http://www.parksgolfcourse.co.uk) or telephone Bob Wickham, Tel 01223 862543 for further details.

*25 Years Ago: July 1990*

## CHAPEL NEWS

### ROMANIA

The question was asked by someone in Milton "How did the Chapel get involved in the Romanian Aid Fund"? Let me try and explain.

David Brunning, who we have mentioned in our other article, went to Romania about 3 months ago and came back to Cambridge with a real desire to help the children in the orphanage at Timisoara.

Offers of clothing and childrens toys etc. came flooding in from all over the area of Cambridgeshire, but no storage space was available. So thats where we came into the story.

As you know we have moved from the Chapel to the Hall at the rear to have our services, so we offered the Chapel space for storage of all those goods destined for Romania. About 3/4 tons were stacked up in the Chapel and were collected by two lorries on Saturday 26th May, and have now been safely delivered to Romania.

David reported on his trip to Romania on Friday 6th July at 7.30 pm. Also there were photographs and slides on display relating to David's journey, and Shelia Moore spoke of her visit to Romania with the London Emmanuel Choir.

## C H LUMB (BUILDERS)

**DRAINAGE - GUTTERING  
UPVC FACIAS & SOFFITS  
PATIOS & FENCING  
ALTERATIONS**

**01223 354402**

**Mobile 07762026290**

## Amethyst Caravan Holidays

**Static Caravans available to  
rent at Manor Park  
Hunstanton**

**Tel: 07795 087907**

**Email:**

[amethystcaravans@hotmail.com](mailto:amethystcaravans@hotmail.com)

# Milton Summer Fayre

Saturday 11th July 2015 from 1.30pm  
***Not Long Now!***



More info online: [www.miltonfayre.uk/summer](http://www.miltonfayre.uk/summer)

## Stalls & Entertainment

Teens **FREE** waterslide courtesy of Alexercise - bring your swimsuit and lilo! Children's dance demos; martial arts displays; and the amazing Amy Peachey Cambridge pole fitness and acro circus display! Refreshments from the W.I. cafe, live music from local bands, food, outdoor bar ... and guest MC: Milton's very own EJ Allen of 'Let the Geek Out' !



This year, **Cambridge 105** will broadcast live from the fayre where you can see **vintage cars, trucks, fayre rides and cheap games** - plenty! Come and **try bowls for free** and many **other free stalls!**

## Dog owners!

Please bring your dogs to the **FREE St. Ives Dog Training Club (SIDTC) Fun Dog Show**. SIDTC will be pleased to get your dog to enjoy the free fun dog events and agility training. Come along - you and your dog will have a great time!

## Stallholders Deadline

**Deadline for Stallholders 27th June 2015 - stalls are filling very fast** - we already have 50 booked - please complete the online form: [www.miltonfayre.uk/book](http://www.miltonfayre.uk/book)



## Join us at the Volunteers' Social Event



It's the new organisers' first summer fayre - have fun volunteering and get an **exclusive invite to a future volunteers social event!** All we ask is a couple of hours of your time to help run a stall on the day - please sign up at: [www.miltonfayre.uk/help](http://www.miltonfayre.uk/help)

## Local Business, Charity or Club?

Are you a local business, charity or club? Don't miss the opportunity of being represented at your local fayre - get in touch now and we'd be pleased to help you make the most of the fayre: [www.miltonfayre.uk/contact](http://www.miltonfayre.uk/contact)





## The Sycamores Recreation Ground

On Thursday 23<sup>rd</sup> July, local company Velocix (Sponsors of Milton Community Football Club) will be holding their annual Staff Summer Party at The Sycamores Recreation Ground. This will run on similar lines as the last couple of years and will be attended by around 100 members of staff and their families. The party will start at 1.00pm, it will feature live music and will be finished by 6.00pm. Velocix will use part of the ground close to the Pavilion and Youth Building; the remaining area will be available for use by the general public. Attendees will be encouraged to park in the Recreation Ground car park.

*Andy Gray - Manager, Milton Community Centre*

## Rectory Farm Shop



Rectory Farm Shop will now only open only during the Summer Maze Season selling locally sourced products: strawberries from neighbouring fields, cakes, jams and local wines and beers, plus a selection of greeting cards and gifts. The pet food section is no more. However the farm will still be selling Christmas poultry and trees. For more details visit their web site:

[www.rectoryfarmshop.co.uk](http://www.rectoryfarmshop.co.uk)

*Paul Oldham*

## Take it to the Tip – Don't Burn it!

Warm weather is here and lots of households are clearing out, sprucing up the garden and carrying out DIY.

Please avoid burning waste: the best place to take it is the local waste & recycling centre (nr. the P&R site). However, if you do have a bonfire:

- ✓ Check the weather – never light bonfires in windy conditions.
- ✓ Don't leave bonfires unattended.
- ✓ Build bonfires well clear of buildings, fences and hedge.
- ✓ Never use flammable liquids or burn hazardous materials.
- ✓ Check that children and animals are not hiding inside and are a safe distance away.

## Need glasses?

Save money, buy direct from ALL EYES Specs

Complete specs from only £9.00!\*

- Repairs & emergency specs\*
- Reglaze your own specs\*
- Complete sunspecs from £49.00\*
- Specs for all sports
- Excellent customer service



\*T & C's apply.

Just bring your new prescription to:

ALL EYES Specs Makers

20 Norman Way Ind. Park

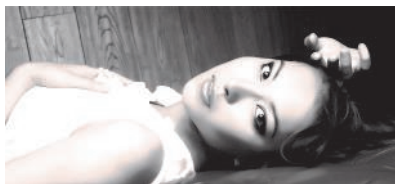
Over, Cambridge CB24 5QE

Tel: 01954 231545; 07824 706969

Mon - Fri; 9am to 5pm

(PLEASE RING FOR AN APPOINTMENT)

[www.all-eyes.co.uk](http://www.all-eyes.co.uk)



## Seasonal flu jabs for 2015/16

Milton Surgery will be running dedicated surgeries on the following dates. Please ring Milton Surgery on 420511 to book an appointment.

Tuesday 6 October 2015	1400 – 1800
Thursday 8 October 2015	0800 – 1200
Friday 9 October 2015	1400 – 1800
Saturday 10 October 2015	0800 – 1200
Monday 26 October 2015	1400 – 1800
Tuesday 27 October 2015	0800 – 1200
	1400 – 1800
Thursday 29 October 2015	0800 – 1200
	1400 – 1800

### People Who Should Have a Flu Jab

The injected flu vaccine is offered free of charge on the NHS to people who are at risk. This is to ensure they are protected against catching flu and developing serious complications.

You are eligible to receive a free flu jab if you:

- are 65 years of age or over
- are pregnant
- have certain medical conditions
- are very overweight (BMI over 40)
- are living in a long-stay residential care home or other long-stay care facility
- receive a carer's allowance, or you are the main carer for an elderly or disabled person whose welfare may be at risk if you fall ill
- are a healthcare worker with direct patient contact, or a social care worker

If you are unsure if you should have a flu jab, please ring Milton Surgery on 420511.

#### **AFFORDABLE STORAGE**

- ✓ SECURE STORAGE
- ✓ FLEXIBLE HIRE PERIODS
- ✓ COMMERCIAL & DOMESTIC
- ✓ RANGE OF SIZES AVAILABLE
- ✓ OFFICE & RETAIL
- ✓ 24 HOUR ACCESS
- ✓ EXCELLENT STORAGE
- ✓ CCTV MONITORED
- ✓ PICK-UP / DELIVERY SERVICE

**01223 420440 / 07711 084164**

email: [mwheeler.bromley@btopenworld.com](mailto:mwheeler.bromley@btopenworld.com)

UNIT 105, NORMAN INDUSTRIAL ESTATE, MILTON, CAMBRIDGE, CB24 6AT

#### **R.B. Electrical LTD** **N.I.C. Registered**

**Your Milton Domestic  
& Industrial Specialists**  
**25 Yrs Experience**

**Tel. 365200**

## Community Orchard Logo

Milton illustrator Alison Hullyer was asked earlier this year to design the logo for the new Community Orchard. It has recently been made into beautiful signs by the charity 'Rowan Humberstone' and you can see them attached to the new gates and fencing around the orchard.

Rowan Humberstone is a Cambridge-based charity and arts centre that was established in 1984 to bring artists and learning-disabled people together in the production of fine artwork and crafts, while providing opportunities for self-expression and creative exploration.

Everyone contributes their own individual skills to each piece of artwork and this collaborative style of working gives rise to beautiful, high-quality, unique works of art.



## Fling a Fiver at Phoenix

The roof leaks and the floor creaks, the windows rattle and we are faced with a battle! Our trusty old portacabin which is vital to our work is rapidly reaching the end of its usable life.



The portacabin is essential to our everyday needs: it is not only used as a sales office but a place for our trainees to learn the theory behind the practical work they do on site.

At ten thirty and twelve thirty every day it is transformed into our canteen for much needed break times and social interaction: the portacabin also houses a canteen kitchen where trainees learn independent living skills whilst providing a two course hot lunch for trainees, staff and volunteers. We also hold seasonal fundraising events in it throughout the year.

Our current target is to raise a massive £88,000 between now and summer 2016, which will help make our wish come true. Please support us by making a donation to help us fund the much needed portacabin: [secure.thebiggive.org.uk/charity/view/63774](https://secure.thebiggive.org.uk/charity/view/63774)

Thank you for your kindness and support,  
The Phoenix Team



## Sewage Works Project Update

Anglian Water is spending £21million expanding Cambridge Water Recycling Centre (just south of Milton) to ensure it can deal with used water from the growing population in and around Cambridge.

The project started last summer and is now reaching a milestone with the first phase completed in March. You may have seen recent media coverage featuring the large new concrete treatment tanks which are already coming on line.



Phase 1 of the project consisted of a new pumping station to transfer used water into the new treatment process, two new aeration lanes and two new final settlement tanks.

The used water (including sewage) comes into the aeration lanes where it is broken down by natural microbes, and then passes into two settlement tanks where sludge is separated from water. The sludge will then be treated separately and will eventually end up on farmers' fields to help fertilise the region's crops. The clean water will

be released back into the river network.

By the end of May, phase 2 will be complete and the remaining aeration lanes will start being used. We will then be able to start turning off most of the old equipment on the site – including the treatment tanks which have been processing sewage from Cambridge since the 1930s.

This will be complete by October, when all construction will be completed and the upgrade will be finished and fully operational.

The project has been designed to future proof Anglian Water's facilities near Milton, to ensure we can support the growth of Cambridge and the surrounding areas for years to come.

Alongside this scheme, work has been ongoing for the past two years to deal with odours. A nitrate dosing plant installed in Histon in 2013 has stopped sewage from breaking down anaerobically and going septic, which is a major cause of odours when it enters the treatment site. The feedback we've had is that instances of odours from the site have declined significantly.

The new works uses the latest technology in sewage treatment and should improve the situation even further. However we will continue to monitor odours and we welcome feedback from residents and businesses in the area.



## EACH: Thank you for your support!

East Anglia's Children's Hospices (EACH) would like to say a huge thank you to everyone involved in making the annual Milton Gala Day and Dog Show a great success. The event was held on Saturday 16<sup>th</sup> May and thanks to a team of organisers, volunteers and attendees a fun filled day.



The event hosted a range of activities, the ever popular dog show and stalls, as well as a new addition for 2015 with Craft Fayre held in All Saints Church.

£5,927 was taken on the day, with an extra £6,840 coming from Lloyds volunteers, Dog Class sponsorships and craft stall pitches, making an amazing grand total of £12,767!

### Interested in Volunteering for a Local Cause?

EACH hospice in Milton is looking for computer literate volunteers to help at the hospice reception on Thursdays and Fridays. Interested? Contact Gillian Phillpot, EACH HR co-ordinator on 205183, [gillian.phillpot@each.org.uk](mailto:gillian.phillpot@each.org.uk).

### Upcoming EACH Fundraising Events

In the next few months, you can support EACH at the Skyline World Record Skydive, Soham Beer & Music Festival, Stretham Charity Bowls Day, Haddenham Steam Rally, and many other events — search for “take part” on [www.each.org.uk](http://www.each.org.uk) for the events diary.

## STAR CURTAINS

**25 years of expertise**  
**Come & buy direct from**  
**our factory**  
**Beautiful fabrics ~**  
**superb quality ~**  
**great prices**  
**Friendly & efficient service**

[www.starcurtains.co.uk](http://www.starcurtains.co.uk)

**2B Swan Lane**  
**Business Park,**  
**Exning, CB8 7FN**

**Our Once A Year**  
**Fabric Sale**

**Saturday 19th**  
**September**

**From 10am to 1.00pm**  
**End of rolls remnants**  
**etc.**

**From just £1.00**  
**Make sure to put this**  
**date in your diary**

**Opening hours:**

**Mon to Thurs**

**9.00 to 4.30**

**Fri & Sat**

**10.00 to 2.00**

**01638**

**578700**



# The Edmund Trust



## Working with people with learning disabilities

**Support Worker vacancies: starting salary £8.63 per hour\***

Full time, part time and casual positions available

The Edmund Trust is a local charity and our mission is to empower and support people of all ages with a learning disability, across Cambridgeshire

**We are recruiting for permanent vacancies available immediately and are interested in hearing from people who are due to complete a level 2 or 3 Diploma in Health and Social Care**

Suitable candidates will be aged 18+ with an interest in working with people of all ages with a learning disability

Successful candidates will be able to demonstrate enthusiasm, flexibility, good practical and organisational skills

\*With a level 2 or 3 Diploma

For a job pack and Application Form visit our website [www.edmundtrust.org.uk](http://www.edmundtrust.org.uk)

or contact **Kelsey Tobolik** on 01223 883130

or email [kelsey.tobolik@edmundtrust.org.uk](mailto:kelsey.tobolik@edmundtrust.org.uk)

The Edmund Trust is an Equal Opportunities employer and welcomes applications from all sectors of the community. Successful candidates will be subject to Disclosure and Barring Service checks prior to appointment.

The Edmund Trust, Edmund House, 9 Church Lane, Fulbourn, Cambridge CB21 5EP  
(Registered Charity No.1030968)



## Milton WI

We welcomed local poet Hollie McNish to our meeting in March which was also our Annual Meeting. Hollie entertained us with poetry from her own life experiences and was charismatic and amusing. In April, Lucy Lewis, a bomb disposal expert, spoke about her life in the army. Stephen Poyser will be at our May meeting and speaking on *Honey from Flower to Table*. Our June meeting promises to be intriguing with Clare Mulley talking on *The Spy who loved: secrets and lives of Christine Granville*. In July "The Five Minute Palmist" Vic Botterill will be joining us; a "fun" evening that should not be taken seriously.

With better weather approaching, walks are being planned, and monthly lunches to pubs or restaurants continue to be enjoyed. Our two darts teams have opened the season well and have been very successful in their matches.

The Cambridge Federation organised a visit to Highclere Castle (Downton Abbey) and this was enjoyed by members. The home of the Carnavon family, it has artefacts from the 5<sup>th</sup> Earl's excavations with Howard Carter and replicas from their discovery of Tutankhamun's tomb. We were able to see many of the rooms used for the filming of Downton Abbey.

New WI members are welcome; anyone can come along for a 'taster'. Contact our President Gill Offley (01223 293231) or Secretary Bridget Crow (01223 441755), or just come along. Meetings are on the third Tuesday of each month at 7:30pm in the Church Hall.

Anne Newman

## Breast Cancer Campaign: New Name, Same Charity

Many of you have supported our stall at Milton Fayre over the years, and we thank you sincerely! Please can you help again by donating any unwanted gifts, 'smellies', bottles of drink, etc. and any unwanted gift bags (we can recycle them!). All the money raised will go towards Breast Cancer Campaign! Please bring your donations of gifts to 6 Recreation Close or tel 07808 520576 if you would like someone to collect.

Thank you again!

Alice Hall and Karen Northfield

### PHYSIOTHERAPY

Treatment for sports injuries, back and neck pain, joint problems etc.

**Liz Cradock** MCSP, MIGHT  
Chartered Physiotherapist and  
Reflexologist, HPC registered

*Recognised by major medical insurance companies*

Treatments at:

'Wellbeing at 17', 17 High Street,  
Waterbeach CB25 9JU

**Tel: 01223 860928 Mob: 07714 052389**

**Email: liz.cradock.physio@gmail.com**

### STRIKE FIT

Fridays 1pm-2pm

Milton Community Centre

also available

**1 to 1 personal training**

Contact : Alex Campbell

Tel. 01223 862184 or 07746  
122749

Email alex@alexercise.co.uk

www.alexercise.co.uk

## Foodshare

Foodshare is now in its 4th year and is an not-for-profit, volunteer-powered charity where growers (schools, allotments and kitchen gardeners) partner with local charities. Our vision is for every school to have a Foodshare Bed and for allotment holders, community and kitchen gardeners to grow extra and share their surplus with a local charity that feeds people. The founder of Foodshare, Mark Desvaux, had an allotment plot here in Milton before migrating to Canada to get Foodshare off the ground there.

For those new to Milton, the allotments are situated down the Ely Road opposite the golf course and the 'Donation Station' is by the noticeboard near the gate. For the past 3 years I have organised a daily rota system where someone would check the 'station' and write, email or text me a note of its contents. Maybe you have a plot and could volunteer? We currently have Sundays, Tuesdays and Wednesdays covered.

If you have any questions or would like to help then please email [foodshareuk@yahoo.com](mailto:foodshareuk@yahoo.com) or text 07895 199028. There are more details about Foodshare at [www.foodshare.org.uk](http://www.foodshare.org.uk)

Theresa, Foodshare Ignite team

## Milton MU

The amount raised by our Lent lunches was £400. This was donated to the Mothers' Union Big Wheels Appeal for people both at home and abroad who are refugees, survivors of abuse or living in poverty. We broadened our understanding of conditions faced by others in the world when Gary O'Shea came to speak at our May meeting about "hazardous occupations".

Our next event will be on June 13th when we will be serving strawberry teas in the church hall from 2:30pm. Bring your friends and spend a relaxing hour or two.

Ely MU is celebrating its 125th anniversary: with a Garden Party held in the Bishop's Garden on June 19th 6:30-8:30pm. There will be an opportunity to look at interesting memorabilia and to catch up with friends.

On July 7th at 12:30pm we are holding a lunch to welcome Jo Wibberley, archdeaconry vice president to Milton. In her final year of office Jo is going on a bike ride around the archdeaconry to raise awareness of the MU. Anyone who is interested to find out more about our work is very welcome to join us at this event. Do contact Jackie Metcalfe for further details: [jacques0701@gmail.com](mailto:jacques0701@gmail.com)

Jacqueline Metcalfe




@milton post office

coffee

postino



The Post Office, 2 Coles Road, Milton, Cambridge, CB24 6BW

[postinocoffee.com](http://postinocoffee.com)



Cambridgeshire  
& Peterborough  
Campaign to Protect Rural England

## Renewable Energy and Energy Efficiency - a View from CPRE

The Campaign to Protect Rural England (CPRE) in Cambridgeshire is confronting major development proposals which impact on our market towns, villages and countryside. The demand and location for thousands of new homes and major road schemes could result in the loss of Green Belt and some of the country's best high quality farmland. There has been a huge increase in proposals for renewable energy developments. Whilst CPRE is broadly sympathetic to the need to reduce carbon emissions, we have to respond to vociferous concerns about the impact of on-shore wind turbines and solar farms which have an unacceptable impact on the landscape.

New research by Cambridge Architectural Research and Anglia Ruskin University, commissioned by CPRE, shows current Government policy may be misguided. Our Warm and Green report ([goo.gl/WFo2gq](http://goo.gl/WFo2gq)) claims energy efficiency has been grossly underplayed in the approach to England's future energy supply. Researchers based in Cambridge looked at case studies from across the country to explore barriers to making energy improvements in rural buildings. They found cost, the difficulty of finding skilled installers and payback time were problems too great for many people to overcome. To ensure progress on reducing our energy demand, the report calls for:

- A bold national programme to reduce energy and carbon emissions from homes and community buildings
- The implementation of stronger zero carbon standards for new homes
- Rural communities to receive a fairer share of funding for energy efficiency.

To find out more about energy efficiency incentives in your area, we suggest you contact your District Council. To find out more about CPRE please e-mail our office at [office@cprecambs.org.uk](mailto:office@cprecambs.org.uk) or call 01480 396698.

### Swedish Massage



Contact Alex Campbell on 01223 862184  
or 07746 122749  
email: [alex@alexercise.co.uk](mailto:alex@alexercise.co.uk)

Benefits include\*:

- Relief from Stress, Anxiety and Tension
- Feelings of Deep Relaxation
- Improved Mood
- Improved Sleep
- A general sense of Wellbeing

Appointments available in Milton & Chesterton  
Sports Centre, Gilbert Road, Cambridge

\* Massage should not be used in place of conventional medical care. Always consult a GP or other Health professional for medical attention and advice.

### Matthew Harney

General Building Work  
Painting & Decorating

[matthew.harney@btinternet.com](mailto:matthew.harney@btinternet.com)

Tel: 01223 696508

Mob: 07962 398114



## Auditions for *Les Misérables* – The Play

St John's Players, based at the Townley Memorial Hall, Fulbourn, are holding auditions in June for their October 2015 production, *Les Misérables* – The Play (from the novel by Victor Hugo, adapted by playwright Tim Kelly). This is a play version of the world-renowned West End musical - only schools are allowed to do the musical version outside of the West End production; however, we plan to make our version as memorable as the musical, with atmospheric music, special effects and an exciting 'barricade scene', which we hope will be one of the most spectacular in local Am-Dram! The play will be directed by Andrew Clark, who previously directed *Pride & Prejudice* and *The Crucible* for us.

We are looking for a large cast, from teenagers to senior citizens, to fill the parts. Singing ability is *not* required in this production, and casting will be made on acting ability – *however*, if you are able to sing, we shall try to utilise your talent where possible, with some rousing group songs.

The production will be held during half-term week and auditions will take place on June 1<sup>st</sup>, June 8<sup>th</sup> and June 10<sup>th</sup> at 7:30pm at the Townley Memorial Hall, The Fulbourn Centre, Home End, Fulbourn, Cambridge, CB21 5BS. You only need to come to one of the audition evenings. The casting will take place after June 10<sup>th</sup> and rehearsals will start on June 15<sup>th</sup>.

For more information on the production (including plot and brief outlines of characters), please look on the "Auditions" section of the St John's Players' website: [www.stjohnsplayers.co.uk](http://www.stjohnsplayers.co.uk) or contact me (Carole Ransom, the producer) on 01354 694782 or 07758 598859 or email: [carole.ransom7@googlemail.com](mailto:carole.ransom7@googlemail.com)

So, if you are already in amateur theatre, or if you have always wanted to 'have a go', please join us – you will be able to tell your grandchildren that you were in *Les Misérables*!



*With us...it's personal*

### MILTON VILLAGE TRAVEL AGENT MR ELI KARRAM

IATA and ATOL Member

I can book any holiday you may have seen elsewhere  
Generally more choice and flexibility than available online  
No limit on booking size Business travel UK and abroad  
Everything financially protected, including flights only  
27 years experience No obligation quotations

01223 855290 or 07963 841 679 any time

[eli.karram@travelcounsellors.com](mailto:eli.karram@travelcounsellors.com)  
[www.travelcounsellors.co.uk/eli.karram](http://www.travelcounsellors.co.uk/eli.karram)

2014 awards: Queen's Award for Enterprise

## Sports Therapy Services

Sports Massage and Injury Rehabilitation



Don't put up  
with the pain

SAVE 25% on your  
first appointment

Additional offers available

call Lesley on **07940 110309**  
or visit

[www.sportstherapyservices.co.uk](http://www.sportstherapyservices.co.uk)



# Around the Pubs

## Jolly Brewers

Tel: 01223 863895

Monday Club is a popular event running from 4-7pm every Monday. Ask the Staff for details and be a winner!

### Dining Experiences

Wednesday 17<sup>th</sup> June – Chef's Choice of Surf and Turf

Sunday 21<sup>st</sup> June – Father's Day: enjoy Sunday Lunch and get a free pint for Dad!

Wednesday 15<sup>th</sup> July – Greek Night

More speciality dining evenings on the way

### Accommodation

2 Night Special – any consecutive 2 night Bed & Breakfast stay only £140: please quote "2 Night Special" when booking. Discounts are available for groups booking all four rooms.

[www.jollybrewersmilton.co.uk](http://www.jollybrewersmilton.co.uk)

### HOWARD'S WAY School of Motoring

#### Manual & Automatic Cars

- Male and Female Driving Instructors
- Pass Plus Courses
- Intensive Courses
- Instructor Training
- Theory & Hazard Perception Confidence / Refresher
- Patient and Friendly
- Top Grade 6
- Motorway Courses

### HOWARD'S WAY WINDOWS

- Window Cleaning by Request
- Milton, Waterbeach, Landbeach
- Pubs, Clubs and Offices

T: 01223 440767 M: 07753 617310  
E: [hcradock@btinternet.com](mailto:hcradock@btinternet.com) [www.h2way.com](http://www.h2way.com)

## Lee Beamiss Carpentry & Building

Tel 01223 440001

Mobile 07815 118339

web site [www.leebeamiss.com](http://www.leebeamiss.com)

email [enquiries@leebeamiss.com](mailto:enquiries@leebeamiss.com)

All your re-upholstery needs  
"COVERED"

## S. PROCTOR UPHOLSTERY

Antique & Modern  
Domestic & Commercial

Foam Cut To Size  
D.I.Y. Sales

Family Trade Since The 1940's

TEL: 01223 440430

Email: [sproctorupholstery@gmail.com](mailto:sproctorupholstery@gmail.com)

C2 BUTTON END IND EST, HARSTON, CAMBRIDGE, CB22 7GX

## MILTON ANTIQUES AND COLLECTABLES

Offering a wide range of items  
Clocks, China, Glass,  
Brass, Copper, Silver plated articles  
Costume jewellery, small pieces of furniture  
Musical instruments and much, much, more

363 The Rowans Milton Cambridge

Tel No. 01223 860061

Mob: 07771620752

We also purchase good quality items.

## White Horse

Tel: 01223 860327

Our large garden has had many trees lowered and trimmed to maximize sunlight for our guests. With the play area and large car park, it is ideal for large groups. A new addition to our games room is a dartboard, which has joined the pool and bar billiard tables.

Our six real ale pumps continue to host many award winning ales with Doombar as a permanent Ale. Our Annual Beer Festival is September 9<sup>th</sup>-13<sup>th</sup>.

Our chef continues to produce many attractive specials alongside his menu. Our Restaurant area has been refurbished with new tables and chairs, seating 32. We are proud to have 5★ food hygiene awarded January 2015.

Karaoke is on the first Friday of each month and watch our notice boards for bands performing here. Quiz Night is every Thursday from 9pm. Free to play.

We have a new web page to find out more details, at [www.whitehorsemilton.co.uk](http://www.whitehorsemilton.co.uk)

Ava &amp; Alan

## Lion & Lamb

Tel: 01223 860202

Over £880 was raised for Pancreatic Cancer at our fundraising event on May 2<sup>nd</sup>. Good luck to Adam – all he has to do now is complete the London to Paris cycle on June 11<sup>th</sup>! More details at [www.doitforcharity.com/ahallworth](http://www.doitforcharity.com/ahallworth)

June 6<sup>th</sup> sees us hosting a Charity Bingo Quiz Night: another great fun event. All money raised on the evening goes to a great cause: *Team Drummond's London Marathon for Alzheimer's Research UK*; here are Chris and Terrie after completing the Marathon in April!



The patio and Pirates Lagoon are now open from 10am. Have a fresh Barista coffee al fresco and relax while the children let their imagination run wild! Don't forget to book your table for Father's Day on June 21<sup>st</sup> – enjoy lunch on the lovely sunny patio.

### Forthcoming events

*Race Day Boogie Nights with DJ Chris Light*, July 9<sup>th</sup> 7-11pm: join us at the pub after Newmarket Ladies Day at the races for a good old boogie!

*Ladies Dinner Club*: June 2<sup>nd</sup> "B-Yourself" with Bev Briggs; September 8<sup>th</sup> "Dementia Friends, [dementiafriends.org.uk](http://dementiafriends.org.uk)" with Trisha

*Psychic Supper*: summer dates now available, please call for details and to book.

*Soul Night*, September 18<sup>th</sup>: with the fabulous Andy Stearn and Chris Brown.

*Macmillan World's Biggest Coffee Morning*, September 25<sup>th</sup>: bigger than ever this year!

Full details of events can be found at on our website, on Twitter and on Facebook. We look forward to seeing you all at the Summer Fayre on July 11<sup>th</sup> – come and enjoy a Hog Roast or a pint from the bar.

Lawrence & Sally [www.lion-lamb.co.uk](http://www.lion-lamb.co.uk)



**YOUR PROPERTY LOOKED AFTER AS IF IT WERE OUR OWN**

**LETTINGS  
LETTINGS  
& LETTINGS,**

Lettings and Property Management Specialists  
Over 30 Years Experience in the Cambridge Lettings Market  
24/7 contact

**IT'S ALL WE DO, 7 DAYS A WEEK**

Direct line to Jo Clark  
**07976 463 944**  
Direct line to Nicola Webb  
**07896 352 160**  
Office 01223 967277  
or 01954 214441

[www.letsrentcambridge.co.uk](http://www.letsrentcambridge.co.uk)  
[info@letsrentcambridge.co.uk](mailto:info@letsrentcambridge.co.uk)



Lettings and Property Management Specialists



Zoopla.co.uk  
Finda Property.com

## Landbeach and Milton Baptist Church

### Sunday Services

- 10.30am Family Service
- 6pm Evening Worship

### Midweek Home groups

- Tues 7.30pm, Landbeach
- Thurs 10.30am, 143 Waterbeach Rd.

All are welcome to our small but friendly fellowship. Further details from Maureen Clark, tel 01954 250118

### EMPLOYMENT OR FAMILY PROBLEMS?

- \*Settlement Agreements\*Unfair Dismissal\*
  - \*Discrimination\*Breach of Contract\*
  - \*Divorce\*Children Disputes\*
  - \*Financial Settlements\*Separation Agreements\*
- FREE INITIAL ADVICE**

**SMITH  
MAY  
SOLICITORS LLP**

Barnwell House, Barnwell Drive,  
Cambridge CB5 8UU

**BRIDGET GILTINANE – Family Lawyer**

[bridget.giltinane@smslaw.co.uk](mailto:bridget.giltinane@smslaw.co.uk)

**JOANNE MAY – Employment Solicitor**

[joanne.may@smslaw.co.uk](mailto:joanne.may@smslaw.co.uk)

**CALL 01223 415372**

**FREE PARKING**

[www.smslaw.co.uk](http://www.smslaw.co.uk)

### Sunday services

**St. Paul's  
MILTON**  
Church at the heart of the community

### Midweek groups & events

#### 8am Holy Communion

A quiet, reflective way to start the day.

#### 10.30am Morning Worship with Children's Groups

Designed to cater for the whole church, from ages 0-100+. Refreshments served.

**Evening Services**  
See website.

Little Rainbows Toddler Group, Parents & Under 1s, Lunch Club, Mothers' Union, Stitchers' Club, Reading Group ...

For full details of all these and more please visit:

[allsaintsmilton.org.uk](http://allsaintsmilton.org.uk)

## Wildlife Notes

I always find March and April exciting months, as old friends turn up again. If any chiffchaffs overwintered in the Country Park this winter just gone, I didn't hear them. I heard my first one of the year in the Country Park car park just after mid-March. By the time of writing this in early May, they are everywhere.

I saw my first swallow on 15th April, although there don't seem to be that many down by the river yet. Either they're not coming or haven't arrived yet. I started hearing what I assumed to be whitethroats in mid-April too. The housemartins may have been a little later; I first saw a couple down at Addenbrooke's on 22nd April, and in the city centre on the same day. I was over in Humphries Way on 25th, and I could hear them in good numbers, so they've properly returned to Milton. There are now clouds of them over Addenbrooke's. My first swifts were heard, then seen, on 7th May.

The blackthorn around the area, either on Cowley Road, or along the river seemed to have a very extended flowering time, almost as if some plants are earlier than others. I noted the ones on Cowley Road were in full flower before mid-March but I was still seeing a lot of flowers on the riverbank in mid-April. We can't have had that hard a winter, as the hawthorn that was coming into leaf still had quite a few berries on it, which feels like a very unusual sight. The hawthorn flowers are just starting to come into flower in early May, so this year it looks as if it should follow its common name of "the may" as other years it's flowered in late April or even earlier.

I'm not sure what's happened with the hedgehogs. We had a couple coming to our feeding station for about three weeks from late March but didn't see one for several weeks. Maybe there are better pickings elsewhere? Or we're just not spotting them? After glimpsing one and frightening it when putting the bins out, I put food out in a clean bowl at the feeding station. There were tell-tale spines in the bowl the next day, so it came back. Memo to self: make sure bowl is filled every evening!

Heather Coleman



**AG First Aid  
Training**

**Amelia Grant**  
First Aid Trainer Instructor

31 Old School Lane  
Milton, Cambridge

ameliagrants@btinternet.com  
<http://www.agfirstaidtraining.co.uk>  
07795680733

*Luxury  
therapies  
at affordable  
prices.*

**No27**  
**THERAPY ROOM**  
Tracy Wesson  
Holistic Therapist

27 Fen Road · Milton · Call 01223 501534  
[WWW.NO27THERAPYROOM.CO.UK](http://WWW.NO27THERAPYROOM.CO.UK)



**20% OFF**  
all treatments  
on your first  
booking





The new Cygnets Pre-school building is now erected and nearly ready for handover to the committee and staff. There is still a lot to do before we can move in, but it is exciting to see it on location. There will be two classrooms, and we will endeavour to split older and younger children where it is feasible. This will be only the second year in recent history that Cygnets will offer morning sessions to the younger 2 and 3 year old children. We have decided to offer the following sessions to all 2-4 year olds:

- ◆ 9:05 – 11:35 (2.5 hrs)
- ◆ 9:05 – 12:35 (3.5 hours, with packed lunch)
- ◆ 9:05 – 15:05 (6 hours, with packed lunch)
- ◆ 11:35 – 15:05 (3.5 hours, with packed lunch)
- ◆ 12:35 – 15:05 (2.5 hrs)

Please note that the application deadline for September allocations was April 30<sup>th</sup>, however, you can still apply as there are some spaces available. Please contact Alison Macklin on 01223-862323 for an application form.

We are a registered charity, which means any help from local people or companies would be greatly appreciated. We would love to hear from you. If you are able to spare some time to help with the physical move in the summer, please do get in touch by contacting the preschool on 01223-862323 or by emailing Lesley Burtenshaw ([chair.cygnets@gmail.com](mailto:chair.cygnets@gmail.com)) or Alison Macklin ([miltoncygnets@gmail.com](mailto:miltoncygnets@gmail.com))

*On behalf of Cygnets Staff and Management Committee*

## PHYSIOMOBILE

**Sarah Koets BSc MCSP MAACP**

Registered with the Health and Care Professions Council

- **Back and neck pain**
- **Sports injuries**
- **Post operative rehabilitation**
- **Arm, hand and shoulder problems**



- **Hip, knee and ankle pain**
- **Repetitive strain injuries**
- **Postural problems**

Self referral accepted Recognised by all major insurers

Milton Surgery, 87 Coles Road, Milton, Cambridge, CB24 6BL

**07790 512094** - [www.physiomobile.co.uk](http://www.physiomobile.co.uk)

Also at: Fen Ditton and Gilton

## Milton FC (Seniors)

Player of the Year Awards Night/BBQ/Grand Raffle will be held in the garden of the Lion & Lamb, Milton on Saturday 30th May 7pm onwards (immediately following the FA Cup Final - 5.30pm kick off). All present/past players and supporters are welcome.

### NEW PLAYERS WANTED!

We are seeking new, committed players, for the 2015-16 season. We will once again be running 6 Adult teams - 3 Saturday Men's teams; the first team play in Kershaw Senior A, the Reserves in NMC 1B & the "A" team in NMC 4A, a Sunday Men's team in the Senior division, a Sunday Men's Veterans (35+) team and a Sunday Ladies team.

For more information please contact Club Secretary Fraser Confrey by email: [fconfrey@waitrose.com](mailto:fconfrey@waitrose.com). or ring/text to mobile 07763 351490.



## Waterbeach Colts

Players needed for Waterbeach Colts football team.

Waterbeach Colts has places available for next season in its U11 squad (i.e. boys who will be in Year 6 in September). If your son is interested in playing please contact the coach, Matt Tilley, on 07855 025568, 01223 977344, email:

[mtilley1977@gmail.com](mailto:mtilley1977@gmail.com)

## GJK Accountancy Limited

**Accountancy services**  
**annual and monthly accounts**  
**bookkeeping**  
**VAT and tax returns**  
**Company formations**

[griffith.kinsman@ntlworld.com](mailto:griffith.kinsman@ntlworld.com)  
 30 The Rowans, Milton, CB24 6YU  
 Mobile 07710 503 148

## Curry & Pizza

Selling delicious...

- ♦ Curry
- ♦ Southern Fried Chicken
- ♦ Burgers
- ♦ Pizza



6B High Street, Milton, Tel: 861948

## Dance, Movement and Storytelling for Children

Through lively classes we invite children to participate in stories and movement in order to encourage independent thought and enquiry. Our material is lively, educational and creative, encouraging both group interaction and individuality.

### Classes on Friday afternoons at Milton Primary

3.30pm (2-4 years) and  
 4.15pm (4-7 years)

We also run workshops in the holidays and Children's Birthday Parties!

Tel. 07837844759

[michelle@creativemovements.co.uk](mailto:michelle@creativemovements.co.uk)

[www.creativemovements.co.uk](http://www.creativemovements.co.uk)

[www.facebook.com/cambridgecreativemovements](https://www.facebook.com/cambridgecreativemovements)



# Godden Auto Services Ltd

*Benet Garage, Cambridge Road, Milton, Cambridge, CB24 6AW*

**Servicing and repairs  
to all makes of vehicles**

**MOT TESTS WHILE YOU WAIT**

**By appointment only**

**[www.goddenautoservices.co.uk](http://www.goddenautoservices.co.uk)**

**All major credit cards accepted**

**Tel: 01223 420380**

**Opening times: Monday to Friday 8.30am—5.30pm, Saturday 8.30am—12.30pm**