



[milton.org.uk/mvv](http://milton.org.uk/mvv)

# Milton Village View

Issue No. 115 – Nov 2014

## In This Issue...

- Christmas Events
- New Restaurant
- Park & Ride Tickets
- OFSTED Report
- Sports Grants

*And much more!*



*Apple Press at the Autumn Festival, Louise Shane*

## SILVER SERVICE TAXI

*Licensed Taxi Service, Reliable, Local & Friendly*

**Ian May**

**Mobile 07989 197816**

Tel: 01223 512609

email: [silverservicetaxi@gmail.com](mailto:silverservicetaxi@gmail.com)

Multi-Seater 1 to 8 passengers  
Airport & Group Bookings welcome  
Specials Needs & A Speciality

[www.silverservicetaxi.co.uk](http://www.silverservicetaxi.co.uk)



*Celebrating over 10 years Supplying Taxi Services in Milton*

# Contact Us

Send us your news and photos:

**vv@miltonvillage.org.uk**

1 Knights Way, Milton, CB24 6DE

Deadlines for articles are:

**12th January**

**12th March**

**12th May**

**1st September**

**1st November**

Issues will be published approx.  
2 weeks after the dates above.

## Online Archive

Find back copies of Village View  
(back to April 2011) on our website:

**milton.org.uk/mvv**

Printed by Langham Press Ltd.

**Delivered Free  
Circulation 1,850**

### Publisher's Notice

Whilst every effort is made to ensure accuracy the publisher accepts no responsibility for errors or omissions. Views and opinions expressed in the Village View are not necessarily those of the publisher or the editorial staff. The publisher does not accept any responsibility for claims made by advertisers.

## EACH Charity Events to Warm Your Hearts this Winter



Christmas is coming, which means it's time to dust off those Santa Suits and get running around Cambridge in the EACH annual **Cambridge Santa Run!** Our popular fun run will be on Sunday 14<sup>th</sup> December starting at The Grafton Centre in Cambridge. Join other families and groups and run/jog/walk or even wheel your way round the



ultimate Cambridge Christmas Course. Sign up and we can provide you with a Santa suit. Save the date: online entry will be available via:

[www.each.org.uk/santaruns](http://www.each.org.uk/santaruns)

And prepare yourself for another magical evening of carol classics at the 2014 **Milton Carol Service**. Hear some heart-felt readings and join in with some singing to embrace the Christmas Spirit with EACH. Be part of the celebration on Thursday 18<sup>th</sup> December at All Saints Church in Milton starting at 7pm. We look forward to seeing you there.



If you use our advertisers, please mention Village View. Thank you to our volunteer distributors.

## November

- Sat 22nd** All Saints Nite Live, pop, rock & jazz, All Saints', 7.30pm  
**Tues 25th** MU Quiet Day, All Saints', 10am-3pm (p.4)  
**Sat 29th** Ekisa Orphanage Charity Day, Lighthouse Toys, Histon  
*Raise money and get Topsy & Tim books signed by the author!*  
**Sun 30th** Christingle Service, All Saints', 3.30-4.30pm



## December

- Fri 5th** Carols Round the Tree at the Lion & Lamb, 6.30pm  
**Mon 8th** Create for Christmas, Church Hall, 7.30-9.30pm (see below)  
**Sun 14th** EACH Santa Fun Run, [www.each.org.uk/santaruns](http://www.each.org.uk/santaruns) (p.2)  
**Sun 14th** Santa's Grotto, Country Park (see below)  
**Thurs 18th** EACH Milton Carol Service, All Saints', 7pm (p.2)  
**Fri 19th** Carols Round the Pubs, starting at Edmund House at 6.30pm  
**Sat 20th** Messy Christmas, All Saints', 3.30-5.30pm  
**Sun 21st** Carols by Candlelight, with mulled wine & mince pies, All Saints', 7pm  
**Mon 22nd** Milton Wind, playing at the Jolly Brewers, 6-7pm  
**Weds 24th** Crib Service, family nativity service, All Saints', 3-4pm  
**Weds 24th** Christmas Eve Family Fun Day, College of West Anglia, 10am-2pm (p.5)  
**Weds 24th** Christmas Eve Holy Communion, All Saints, 11.30pm  
**Thurs 25th** Christmas Day Celebration, All Saints', 10.30-11.30am



## January

- Sun 4th** Epiphany Carol Service with the Wren choir, All Saints', 3pm  
**Tues 6th** Mothers Union AGM, Church Hall, 2.30pm

See pp.18-19 for more events at the pubs.

See [www.milton.org.uk/diary.html](http://www.milton.org.uk/diary.html) for more event details.

See [www.miltoncountrypark.org](http://www.miltoncountrypark.org) for more park event details.

### Santa's Grotto in the Country Park

A truly wonderful way to see Father Christmas and support a worthwhile cause at the same time. Set in our magical "Wild Place", children will visit Santa in a woodland setting and receive a small gift before getting the chance to follow the star trail to hang wishes in Fairy Wood.

Sunday 14th December — tickets on sale from Cafe Diem from mid-November (look out for posters in the park nearer the time for details).

### Create for Christmas

Monday 8th December 2014  
 7.30-9.30pm

All Saints' Church Hall  
 Enjoy mulled wine and seasonal treats whilst creating your own Christmas crafts.

No experience needed!

Cost £5 (to cover materials)

Accompanied young people aged 11+ free.

Book online at [www.allsaintsmilton.org.uk](http://www.allsaintsmilton.org.uk)

or call 01223 441007





## Mothers Union Harvest Supper



The recent Mothers Union Harvest Supper was shared with MU members from Stapleford MU. The evening provided an opportunity to renew friendships and also raise money for MU projects working to support family life.

Thanks must go to all the members who prepared the meal, Daphne for organising a most successful table top sale and John Uttin for the sterling work he did in the kitchen.



*Jackie Metcalfe*

## All Saints' Milton MU News

Tuesday 25 November is the Ely Diocese Mothers' Union Quiet Day led by Rev Valerie Kilner at All Saints' Church Milton. The day will start at 10.30am with refreshments served from 10am. It will close at 3pm. Please bring a packed lunch. The cost of the day, payable upon arrival, is £5. To book a place please ring 564361.

The aim of the Mothers' Union's aim is to be transformational. MU is a worldwide fellowship of over four million members who bring Christian care to families of all kinds. The grassroots nature of our locally-based membership means that the focus of Mothers' Union is on promoting marriage and building stable family life within local communities. We:

- Pray for relationships to be flourishing and loving
- Enable development of all kinds: economic, relational and personal, so that family life is strengthened
- Campaign for social justice for those on the margins and for greater recognition of the value of stable family life

For further details please contact Jackie at:

[jacques0701@gmail.com](mailto:jacques0701@gmail.com)

## PAINTING DECORATING GLAZING

Mobile  
07860 453533  
Phone:  
01223 700800  
(local resident)



**B.J. LEONARD**

*Stephanie's*  
MILTON'S UNISEX HAIRDRESSERS

Professional Hairstyling for Men and Women

**Telephone: 01223 420526**

*Discount for all new clients*

49 Cambridge Road, Milton, Cambridge, CB24 6AW



# Christmas Eve Family Fun Day

24th December 2014 - 10am-2pm



*Animal nativity display  
Meet Father Christmas in his tractor  
Christmas craft activities  
Carol singers*

*Hot food and drink available*



## Book online at [cwa.ac.uk/shop](http://cwa.ac.uk/shop)

*Tickets £1 per person\* (50p for under 12s  
includes admission to all attractions)*

*\*Milton residents receive 2 free tickets per household  
\*CWA staff and students receive 2 free tickets per person*

*Book online before 30th November to receive  
one free tea or coffee per order!*

**The College  
of West Anglia**



CAMBRIDGE CAMPUS  
LANDBEACH ROAD, CAMBRIDGESHIRE, CB24 6DB

## Autumn Litter Pick

It was a beautiful warm day on Sunday 19 October and eight volunteers collected rubbish all around the village. It's a good way to get some exercise and meet people who care about the village.

We met, as usual, at the Parish Office at 2pm and made sure everyone had litter-picking sticks, gloves and bags and then set off in different directions.

Louise and Trevor went along Cambridge Road and tackled the Tesco shrubbery on their way to clearing the A14 slip road. Anne and David took a long route north up the High Street to the allotments, then back past the College of West Anglia to Butt Lane and tidied the far side of the A10 footbridge.

Hazel and Robin went north up Coles Road, then along Butt Lane and down the bund path to the Sycamores Recreation ground.

Peter and I tidied up Cambridge Road, Tesco's footpath and the Sycamores Recreation ground. We collected around 15 bags of rubbish between us, which SCDC collected the next day.

The next Litter Picks will be in mid-February and around the end of May.

Remember whenever you are out and about - Please take your rubbish home or put it in a bin. In the words of Annika Pauly, fourth grade, New Haven Elementary, Kentucky,

"If our whole world was littered then our lives would be rubbish."

*Anna Bradnam*

## Adult Support Drop-In Events

For anyone who is living with a long-term illness or disability, providing unpaid support to adult family members or friends who could not manage without this help, or struggling with an age-related condition, drop-in support events are being held at Sawston Free Church on 16th December (10.30am to 1pm) and Tesco Bar Hill Community Room on 17th November and 15th December (10.30am to 1.30pm).

## Waggon & Horses Bus Stop

For safety reasons, there is a need to move the southbound bus stop opposite the Waggon & Horses Public House. Stagecoach have suggested re-routing the southbound bus past Knights Way then along Ely Road, with the bus stop near the sewage pumping station. The Parish Council would appreciate your views on this suggested site or an alternate position for the bus stop.



# M.J. Potts

**HEATING & PLUMBING  
SERVICES LTD**

- GAS SAFE REGISTERED
- Boiler Installation - Gas & Oil
- Complete Bathroom Design and Installation
- Landlords Certificates
- Power Flush
- Tiling
- Under Floor Heating
- Gas Boiler Servicing
- Free Estimates

*\* Covering Cambridge for 30 years \**



**Ph: 01223 242544**

Email: [malcolm.potts@btconnect.com](mailto:malcolm.potts@btconnect.com)  
Unit 8, Ronald Ralph Court, Wadlows Road,  
Cambridge, CB5 8PX



2163

# J.P.Morley Roofing

Est. 1985



## All types of roofing Flat roof specialist

1 Old School Lane, Milton

**Home: 01223 863259**

**Mobile: 07941 198771**

**[josephmorley@btinternet.com](mailto:josephmorley@btinternet.com)**



David Cottingham



David Cottingham

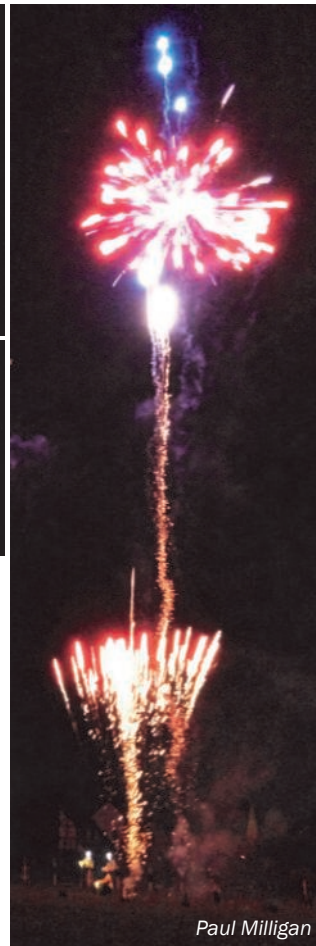


## School Fireworks

The MSA fireworks display at the school was open to the whole village this year, and as usual it was a spectacular display, enjoyed by hundreds of people.

The Scout barbecue on site also did a great trade!

David Cottingham



Paul Milligan



**MGS**

**MILTON**gasservices  
your local gas specialist

161938



- Servicing, Installation and Repairs
- Gas Boilers, Fires, Cookers and Central Heating Systems
- Powerflush Cleansing of Central Heating Systems
- Energy Efficiency upgrades
- Landlord Gas Safety Checks and Certificates

Contact - Eddie Kikas  
Your Local Gas Specialist

Tel/Fax: 01223 861810 Mobile: 07831 228181

Email: [miltongas@btinternet.com](mailto:miltongas@btinternet.com)  
[www.miltongas.co.uk](http://www.miltongas.co.uk)

51 Bourneys Manor Close, Willingham, Cambridge, CB24 5GX



### Pilates Classes Milton & Landbeach

Mon 9.30am - Mixed Ability Mat Class (MCC)  
Mon 10.30am - Mixed Ability Mat Class (MCC)  
Tues 6.20pm - Intermediate Mat Class (Sch)  
Tues 8.15pm - Mixed Ability Mat Class (Sch)  
Fri 10.30am - Mixed Ability Mat Class (LVH)

Contact Liz on 07768 155278  
or [liz.dolman@lovepilates.co.uk](mailto:liz.dolman@lovepilates.co.uk)  
NVQ level 3 Pilates & PureStretch Instructor

For further info, visit [www.lovepilates.co.uk](http://www.lovepilates.co.uk)

## Your Parish Council Needs You!

Are you interested in what happens in Milton? Would you like to make it an even better place to live? Consider becoming a parish councillor. Just a few hours a month is all that's required to make a significant contribution to village life

For more information about being a parish councillor, please see our website:

[www.miltonvillage.org.uk/opus211.html](http://www.miltonvillage.org.uk/opus211.html)

Or better yet, come along to a parish council meeting (dates and times advertised on the parish notice boards and website) or speak to one of our councillors and find out what they think of the job.

## Reporting of Smells

If you are a resident of Milton Village affected by smells, and want specific updates from the Milton Air Quality Working Party, please email your contact details to [Hazel.smith@miltonvillage.org.uk](mailto:Hazel.smith@miltonvillage.org.uk) or call her on 01223 860752. Please give your name, address and email address. You can give your telephone number if you'd like one of us to call you, but it is optional.

Below please find an updated list of your councillor contact details (for email addresses: please visit the website at [miltonvillage.org.uk](http://miltonvillage.org.uk) and click on 'Meet Your Parish Councillors'):

## Parish Councillors

Jane Coston *Chairperson*

(c/o Parish Office, 861447)

Ian May <i>Vice Chairman</i>	521294
Richard Summerfield	860715
Anna Bradnam	862364
David Chamberlin	861511
Rob Farrington	860160
Gary Heaney	690317
Jim Mowatt	861024
Michael Perkins	07769 665836
Ian Tyes	574394
Adam Dark	07403 162266
David Stirrups (c/o Parish office)	861447
Gemma Faulkner <i>Clerk</i>	861447

## Parish & District Councillors

Mark Hersom	07852 997771
Hazel Smith	860752

## County Councillor

Maurice Leeke	441562
---------------	--------



*For all your Concrete  
And Wooden Garden Products*

Paving, Edging, Ornaments, Bird Feeders, Planters, Trellis, Nest Boxes, Pot Hangers, Picnic Benches and much more

**A limited range of Pot Plants  
for your Garden, Planters, and Pot Hangers**

**Tel: 01223 420669**

[www.phoenixtrust.org](http://www.phoenixtrust.org) Unit 8, Milton Trading Estate

*Supported work experience for people with learning difficulties*

## Harmony

Hair and Beauty Salon



[www.harmonysalon.co.uk](http://www.harmonysalon.co.uk)

*Expert hair stylists for Men, Women and Children  
Beauty therapists offering a range of treatments*

Telephone **01223 863636** to book an appointment

6 High Street, Milton, Cambridge, CB24 6AJ

Open 9-6pm Monday - Friday  
9-2pm Saturday





## From the Desk of the Parish Chairperson

As the **new Chairperson** for Milton Parish Council I would like to thank Richard Summerfield, the outgoing Chairman, for all his work during his tenure. I would also like to welcome **two new Councillors**, Milton residents David Stirrups and Adam Dark, and wish them both the best of luck with their future involvements. I would like to remind you that there is still an opening **for one more parish councillor**, and I would ask you to consider volunteering for this rewarding role on the council.



I was very proud and happy to present Milton resident George Cunningham with chocolates and flowers to help celebrate his **100th birthday**. I am sure you will all join me in wishing George a Happy Birthday. A retired pharmacist and former RAF serviceman from Cambridge, George celebrated his 100th birthday with a celebratory trip to the Imperial War Museum (IWM) at Duxford.

**Milton Approaches Working Group** is looking at improvements to the approaches into Milton Village to tackle parking on grass verges, litter and illegal signs.

The **notice board at the end of Coles Road** by the War Memorial has been temporarily taken down so refurbishment work can be carried out on the wall. When the work is complete the notice board will be returned so you can again have easy access to local information.

**Bellway Development.** As you are aware, the new housing development on Ely Road is progressing rapidly: in fact there are now residents moved into a number of the properties. Work is also well underway on the new football pitches and pavilion that the village will receive when complete. We are continuing to work with Bellway to ensure that local residents receive the best possible facilities.

*Jane Coston,  
Chairperson, Milton Parish Council*



**Dance Fitness Class**

### **Zumba Classes in Milton 2014** **Licensed Zumba Instructor Liz Dolman**

Milton Primary School  
Tuesday Nights 7.15pm  
All Abilities Welcome  
Weekly £6 or 5 Session Card Available

For further information  
contact Liz on 07768 155278  
or [liz.dolman@love2zumba.biz](mailto:liz.dolman@love2zumba.biz)  
Visit [www.lovepilates.co.uk/zumba](http://www.lovepilates.co.uk/zumba)

## **AMBASSADOR LODGE** **BED & BREAKFAST**

37 High Street, Milton, CB24 6DF  
(next to the Waggon & Horses pub)

Friendly, family-run B&B

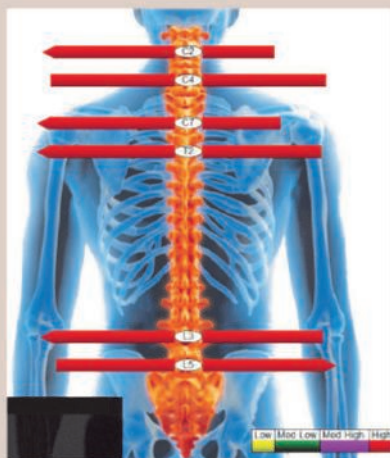
Contact: Phil or Fizz Turner  
Tel: 01223 860168

[www.ambassadorlodge.co.uk](http://www.ambassadorlodge.co.uk)  
e-mail: [ambassadorlodge@yahoo.co.uk](mailto:ambassadorlodge@yahoo.co.uk)



## BACK AND NECK PAIN SPECIALISTS

Winners of the **Patient Partnership Quality Award** from the Royal College of Chiropractors, our Milton clinic offers you excellent treatment for neck and back pain.



Using the latest technology the **Myovision** system allows for increased accuracy in diagnosis and treatment.

See our website or call us for more information:

[www.miltonchiropractic.co.uk](http://www.miltonchiropractic.co.uk) 01223 864444



2013 - 2015

Accepted by all major  
insurance companies

## Extra Machines for P&R

Since parking charges were introduced at Cambridge's Park & Ride sites, there have been queues to use the machines at busy times, so the Council have installed more machines.

The improvements are part of a number of initiatives by Cambridgeshire County Council to make it easier for people to pay for their parking and catch a bus at the Park and Ride.

Thousands of people are also going online to [www.cambridgeparkandride.com](http://www.cambridgeparkandride.com) to pay for their parking at the sites, where a number of options are available, from discounted annual season tickets to pay-as-you-go for occasional users.

Now eight extra machines are being put in at the five Cambridge sites. The parking system is ticket free; all drivers need to do is enter their registration number in the machine.

There have also been reports of pensioners getting confused, and pressing the "Park and Ride" button which then charges them for riding, which is free with a bus pass - for now at least they only need to pay to park.

*Paul Oldham*

## New Italian Restaurant



The refurbishment at the Waggon & Horses has now finished, and it has reopened as an Italian restaurant, *Osteria*. Find them on Facebook ("Osteria Waggon & Horses") or Twitter (@OsteriaWH).

*Mary-Ann Johnson*

## Macmillan Coffee Totals

At the end of September, both the Lion & Lamb and the White Horse held World's Biggest Coffee Morning events in aid of Macmillan Cancer Support. The events raised £1103.50 and £335.10 respectively, which we make a total of £1438.60. Well done to all involved.

*Paul Oldham*

### **C H LUMB**

**(BUILDERS)**

**DRAINAGE - GUTTERING**

**UPVC FACIAS & SOFFITS**

**PATIOS & FENCING**

**ALTERATIONS**

**01223 354402**

**Mobile 07762026290**

**Michaela Overton**

**F.Clnt.L.Ex**

- ♦ **Wills,**
- ♦ **Probate Assistance**
- ♦ **Lasting Powers of Attorney**

**Tel. 07810 140967**

**Free home visits**



25 Years Ago: Nov 1989



### Cycle/Pedestrian Underpass

White lines in place showing where the cycle and footpath are going to be placed at the railway crossing near the Science Park.

This work will make this dangerous section of Milton Road much safer.

Work is scheduled to be finished in the spring of 1990.

## From the Archives

10 Years Ago: Dec 2004

### Cubs snake adventure



Cubs were treated to a rare experience when Mick Skeldins attended their meeting to talk about his job as a Customs Officer. They were allowed to lie on a snakeskin.

*Wendy Stanley*

## If You Live Near Milton, Fixing Your Car Doesn't Have To Be Expensive!

We've a reputation for treating our customers as if they're family.....so you get top quality, friendly service at some of the best prices in town. But don't just take our word for it, see our customer reviews at:

[www.cambridgeonline.com](http://www.cambridgeonline.com) or [cr-autoservices.co.uk](http://cr-autoservices.co.uk)

**Tel: 01223 423982**

Unit 2, Cambridge Rd Ind Estate (nr. Milton Country Park), Milton, CB24 6AZ



**TYRES & SERVICING  
At Probably The  
Best Prices In  
Cambridge**

Approved fitting centre for [blackcircles.com](http://blackcircles.com)

### Lots of FREE Stuff

- FREE Vehicle Health Check
- FREE Antifreeze check
- FREE pre-Mot check
- FREE Brake Fluid check
- FREE Battery check

**M.O.T's at  
the best price in  
Cambridge!**

**From only  
£27\***

\* not available to trade

## Christmas Present Safety Advice

The countdown to Christmas is on and with this in mind it is time to think about how secure your property and gifts are. To play your part in the campaign, please remember to:

- ◆ Close the curtains once it gets dark outside, especially if inside lights are on
- ◆ Keep doors and windows locked
- ◆ Hide from view any wrapped presents
- ◆ Remove presents from vehicles as soon as you can.
- ◆ Look out for any elderly or vulnerable neighbours and encourage them to follow these tips
- ◆ Not leave empty boxes outside as these could advertise the Christmas goodies inside the house
- ◆ Register your gifts for free on the Immobilise database. Immobilise is a free property registration system which allows stolen or lost goods to be identified and returned to the owner. Property can be registered at [www.immobilise.com](http://www.immobilise.com).

Have a very secure and Merry Christmas

PCSO John Mason

## Arthur Conder Jr

Thanks to Jonathan Conder, there is now a copy of Arthur Conder junior's life story on the village web site at [www.milton.org.uk/history/opus2899.html](http://www.milton.org.uk/history/opus2899.html). Arthur's father ran the village shop between the wars and Arthur junior gives a fascinating account of village life then. The following are a few excerpts from the page:

*"I arrived in Milton just after the First World War with my parents, brothers and sisters, to take over the General Stores."*

*"The village was made up of dairy farmers and small holders who formed a co-op run by Mrs Wilson and Mr Honey in the Red House next to the White Horse pub"*

*"The other luxury that came with the Post Office was the telephone. Our number was Waterbeach 31. It wasn't automatic ... and we had to turn a little handle before you picked up the receiver"*

*"One thing I would like to see revived is Milton Feast which was held on the second week of May on the village green, when all the village people invited their friends from the neighbouring villages for Feast Sunday"*

Along with his life story, the page also includes a few contemporary photos of the shop and Arthur Conder's family.

### AFFORDABLE STORAGE

- ✓ SECURE STORAGE
- ✓ FLEXIBLE HIRE PERIODS
- ✓ COMMERCIAL & DOMESTIC
- ✓ RANGE OF SIZES AVAILABLE
- ✓ OFFICE & RETAIL
- ✓ 24 HOUR ACCESS
- ✓ EXCELLENT STORAGE
- ✓ CCTV MONITORED
- ✓ PICK-UP / DELIVERY SERVICE

**01223 420440 / 07711 084164**

email: [mwheeler.bromley@btopenworld.com](mailto:mwheeler.bromley@btopenworld.com)

UNIT 105, NORMAN INDUSTRIAL ESTATE, MILTON, CAMBRIDGE, CB24 6AT

## R.B. Electrical LTD

### N.I.C. Registered

**Your Milton Domestic  
& Industrial Specialists**  
**25 Yrs Experience**

**Tel. 365200**

# Milton Community Café and the PPG

Our last two meetings of the Milton Community Café were in the Community Centre Lounge, with nearly twenty people attending. But we could do so much more. For the past year, the Milton Patient Participation Group (PPG) has asked around for volunteers to become part of a team so that we could give more support in the community. The response – pretty much NIL. Obviously our advertising has to be a lot more gripping: here's volunteering in Milton in an alternative universe...

*I slipped through the surgery door. The PPG crowd were there. Brian, the Boss, nodded to me. The eyes in Bob's grizzled face glanced across before returning to Lynn's pen as it sped across the paper, recording Pam's latest news on the Surgery front.*

*A week later Sue called. "You got a car?". "Sure!" I replied. "Has it got a big boot?" I could imagine her questioning eyebrow. "Big enough. What do you want it for?". "I'm getting the gang together. You pick up Rene and Aileen and I'll hit the Church for some cushions – we'll be real comfortable and all."*



*Steam curled up from the cups, obscuring faces on the next table. I couldn't see any aces hidden up a sleeve, but it was obviously a mean game of Newmarket.*

*"ZO!" Came the triumphant cry on my left. The alternative spelling of dzo (offspring of a yak and a cow) blocked my chance of a triple letter score in Scrabble. Then I spied my chance and triumphantly filled the gap between LOVE coming down the board with a horizontal RING, using my O, L, U, N, T, E, E over a double word score. Yes, VOLUNTEERING, that's my game!*



So, have we seduced you into the steamy fictitious world of volunteering in Milton? Or could you be equally happy with experiencing the warm glow of helping out in your community? The next Community Café is November 25th, 2.30-4.30pm, followed by December 9th.

Contact either Pam Vincett at Milton Surgery, Sue Nunn on 861747 or me Chris Thomas on 440024 for information and drop in on one of our PPG meetings.

## PHYSIOTHERAPY

Treatment for sports injuries, back and neck pain, joint problems etc.

**Liz Cradock** MCSP, MIGHT  
Chartered Physiotherapist and  
Reflexologist, HPC registered

*Recognised by major medical insurance companies*

Treatments at:

'Wellbeing at 17', 17 High Street,  
Waterbeach CB25 9JU

**Tel: 01223 860928 Mob: 07714 052389**

**Email: liz.cradock.physio@gmail.com**

## STRIKE FIT

Fridays 1pm-2pm

Milton Community Centre

also available

**1 to 1 personal training**

Contact : Alex Campbell

Tel. 01223 862184 or 07746  
122749

Email alex@alexercise.co.uk

www.alexercise.co.uk



# Milton Primary: Ofsted Inspection

*"This is a good school"*

Milton CE Primary was inspected on September 18/19th by Ofsted. I am delighted that we have received a good rating overall with good ratings in all key areas: leadership and management, behaviour and safety of pupils, quality of teaching, achievement of pupils and early year's provision. I am delighted that some of the key areas that we have been working on as a part of our school development plan have been recognised as making a measurable impact, such as progress of vulnerable groups, the use of teaching assistants, our development of the curriculum and feedback to pupils about their learning.

My favourite parts of the report (which is written in bland 'Ofsted-speak', as are all the reports these days) are all about our fantastic pupils. I'm so proud of them all.

*"Behaviour around the school is exemplary. Pupils are polite and show respect for one another and adults"*

*"Potentially vulnerable pupils, including those with a disability or special educational needs, are accepted by everyone and included in all activities."*

My thanks go to the whole of the school team who all played their part:

*"Teachers have a good knowledge of what pupils can do and what interests them, and they use it to plan lessons that are interesting and engaging and build upon pupils' previous learning."*

*"Teaching assistants make a good contribution to the learning of groups of pupils within the classroom."*

*"The governing body is highly committed to the school and to its vision and ethos"*

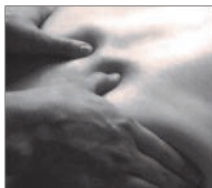
It was a rigorous process and the report reflects accurately where we are as a school. We look forward now to the next phase of continuing our journey to provide an excellent education for all our pupils.

Anna Reeder

Headteacher, Milton CE Primary School

## Sports Therapy Services

Sports Massage and Injury Rehabilitation



Don't put up  
with the pain

SAVE 25% on your  
first appointment

Additional offers available

call Lesley on **07940 110309**  
or visit  
[www.sportstherapyservices.co.uk](http://www.sportstherapyservices.co.uk)

## Need glasses?

Buy direct from the manufacturer!



**SAVE UP TO 75%**

*Just bring in your up-to-date prescription for a Top Quality bargain.*

- Premium frames & lenses
- High/Complex prescription
- Reglaze your own frame\*
- Emergency supply & repairs\*
- Free specs for NHS Vouchers\*
- Large selection of frames

(\*T&C's apply, please call for details)

Please telephone for an appointment

**01954 231545** or 07824 706969

email: [info@all-eyes.co.uk](mailto:info@all-eyes.co.uk)

[www.all-eyes.co.uk](http://www.all-eyes.co.uk)



Visit our Factory Shop:

20 Norman Way Ind. Park,  
Over, Cambridge, CB24 5QE

Mon-Fri: 9.00am to 5.00pm

## Milton WI

The Centenary baton reached the Cambridge Federation on its journey around the UK. It had a stop in Milton on November 1st when members greeted it, and then cheered it on its way to the City Centre. We then celebrated with lunch at The Jolly Brewers. We have two darts teams in the WI league, and have started the season with a new home: The White Horse.

We welcomed Eva Clarke to our October meeting. She was born in Mauthausen concentration camp in 1945 near the end of World War Two. Her story is remarkable: her father, a German Jew, had fled to Czechoslovakia before the war, and had married Anka Bergman, who lived to be 96. Eva talks in schools and works alongside the Anne Frank Trust and the Holocaust Educational Trust. Members will be taking our November meeting and our meeting on December 9th is our Christmas Party organized by the Committee. In January, Marian French will be talking on The Social History of Cambridge.

New members are always welcome: Contact President Gill Offley (01223 293231) or Secretary Bridget Crow (01223 441755) for further details, or just come along.

Anne Newman

Can you spare a little bit of time to make a difference to a family who need support?



Home - Start provides a unique **Support and friendship for families**

service for families recruiting and training volunteers to support parents with young children at home. We are currently seeking volunteers to offer support to families in the Cambridge City and South Cambs area.

Do you have parenting experience and 2-3 hours a week available? Full training will be given and you will gain valuable experience, support, friendship and skills in a rewarding volunteer role.

Next course starts on 20th January 2015 and will be within school hours.

We support families in a variety of circumstances, eg mental health issues, disability, isolation, new to region, multiple births, poverty, relationship breakdown, helping them gain confidence and move forward.

To talk about volunteering contact our friendly team: 01223 210202 or

[office@homestartcambridge.co.uk](mailto:office@homestartcambridge.co.uk)

Registered Charity No. 1106007

### Swedish Massage



Contact Alex Campbell on 01223 862184  
or 07746 122749  
email: [alex@alexercise.co.uk](mailto:alex@alexercise.co.uk)

Benefits include\*:

- Relief from Stress, Anxiety and Tension
- Feelings of Deep Relaxation
- Improved Mood
- Improved Sleep
- A general sense of Wellbeing

Appointments available in Milton & Chesterton  
Sports Centre, Gilbert Road, Cambridge

\* Massage should not be used in place of conventional medical care. Always consult a GP or other Health professional for medical attention and advice.

## Matthew Harney

General Building Work  
Painting & Decorating

[matthew.harney@btinternet.com](mailto:matthew.harney@btinternet.com)

Tel: 01223 696508

Mob: 07962 398114



# MCP Community Orchard Project

In 2006 The Friends of Milton Country Park (MCP) helped plant a small orchard at the southern edge of the Park. Since then it has been maintained by Cambridge Sports Lakes Trust. There is some fantastic work being done locally at Trumpington and Histon which now have established community orchard projects. The main purposes of this project would be as follows:

- Better maintain and protect the orchard trees already at the site.
- Protect and encourage wildlife to improve biodiversity at the site.
- Expand the area with additional tree planting and incorporation of a wildflower area

This is an exciting project currently in the early stages of planning. Funding will hopefully come from grants and the input of local businesses and as part of the grant application process it is important that there is community support.

What I would like to do now is ask anyone interested in being part of the MCP Community Orchard Project to please get in touch. I am hoping to get a group of volunteers together to be involved in any aspect of the orchard. For example, do you have:

- A few hours spare for tree planting, pruning, weeding and general maintenance?
- A particular skill which could help us? It could be anything from gardening, wildlife/fruit tree knowledge, fencing/hedge laying through to more creative skills like wood working, map design, artist's drawings.

Are you a local school or children's group who could use the site for educational purposes: planting trees, conducting wildlife surveys, sowing seeds; or something fun like a wassailing event or apple pressing? Do you know of a local business who might contribute to the project? Perhaps they could fund an item like a bench, fence, information board or sign, or make a smaller contribution by sponsoring a tree? They could even arrange a staff event to volunteer their services by helping plant a hedge or do some weeding!

In whatever capacity you might like to help, I'd love to hear from you at [orchard@miltoncountrypark.org](mailto:orchard@miltoncountrypark.org). Many thanks,

*Sarah Harris, Milton Country Park Community Orchard Project*





*With us...it's personal*

**MILTON VILLAGE**  
**TRAVEL AGENT**  
**MR ELI KARRAM**

IATA and ATOL Member

I can book any holiday you may have seen elsewhere  
 Generally more choice and flexibility than available online  
 No limit on booking size Business travel UK and abroad  
 Everything financially protected, including flights only  
 26 years experience No obligation quotations

**01223 864260 or 07963 841 679 any time**

[eli.karram@travelcounsellors.com](mailto:eli.karram@travelcounsellors.com)  
[www.travelcounsellors.co.uk/eli.karram](http://www.travelcounsellors.co.uk/eli.karram)

2013 awards: Sunday Times / HSBC International Track 200 and  
 Sunday Times Profit Track 100

Ω

**Omega Clean**

Cambridge

100% money back guarantee.

Carpet – Upholstery – Rugs

Spotter with every clean. Free!!

01223 864335/07734 711839

Safe – Natural – Cleaning

[www.omegaclean.co.uk](http://www.omegaclean.co.uk)



## Around the Pubs

# Lion & Lamb

Tel: 01223 860202

We are really pleased that the new outside play area has been so well received. We were blessed with a beautiful September: it was great to see so many enjoying this great space.

- \* SOUL NIGHT: November 14th and January 30th
- \* LADIES DINNER CLUB Christmas Dinner & Wine Tasting on December 2nd (this must be booked in advance)
- \* PSYCHIC SUPPER on November 19th

Christmas is just around the corner and our big Christmas tree will be appearing in December. The festive season sees us hosting CHRISTMAS PARTY NIGHTS on December 12th and 19th. Santa is in the bar on Christmas Eve followed by a New Years Eve Party to round off the year! If you are thinking of joining us for a Christmas meal, our menu and details of all Christmas events can be found on our website along with opening times and food service times - [www.lion-lamb.co.uk](http://www.lion-lamb.co.uk)

Sally, Lawrence and the team look forward to making you welcome on your next visit to the Lion & Lamb xx

### HOWARD'S WAY School of Motoring

#### Manual & Automatic Cars

- Male and Female Driving Instructors
- Pass Plus Courses
- Intensive Courses
- Instructor Training
- Theory & Hazard Perception Confidence / Refresher
- Patient and Friendly
- Top Grade 6
- Motorway Courses

### HOWARD'S WAY WINDOWS

- Window Cleaning by Request
- Milton, Waterbeach, Landbeach
- Pubs, Clubs and Offices

T: 01223 440767 M: 07753 617310  
E: [hcradock@btinternet.com](mailto:hcradock@btinternet.com) [www.h2way.com](http://www.h2way.com)

## Lee Beamiss Carpentry & Building

Tel 01223 440001

Mobile 07815 118339

web site [www.leebeamiss.com](http://www.leebeamiss.com)

email [enquiries@leebeamiss.com](mailto:enquiries@leebeamiss.com)

All your re-upholstery needs  
"COVERED"

## S.PROCTOR UPHOLSTERY

Antique & Modern  
Domestic & Commercial

Foam Cut To Size  
D.I.Y. Sales

Family Trade Since The 1940's

TEL: 01223 440430

Email: [sproctorupholstery@gmail.com](mailto:sproctorupholstery@gmail.com)

C2 BUTTON END IND EST, HARSTON, CAMBRIDGE, CB22 7GX

## MILTON ANTIQUES AND COLLECTABLES

Offering a wide range of items  
Clocks, China, Glass,  
Brass, Copper, Silver plated articles  
Costume jewellery, small pieces of furniture  
Musical instruments and much, much, more

363 The Rowans Milton Cambridge

Tel No. 01223 860061

Mob: 07771620752

We also purchase good quality items.

## Jolly Brewers

Tel: 01223 863895

We are featured in the *CAMRA Good Beer Guide 2015*: one of only 26 pubs in Cambridge in the guide! Real Ales always on tap plus some Festive Guest Beers will be available during the party season! Join us for Winter Warmer Pie Night on November 26th.



Meet a Boxing Legend on December 5th 7:30pm - Come and join us for An Evening with Dave Boy Green MBE, "The Fen Tiger". Tickets (£8 per person) available behind the bar or call Mikki Dowling on 07964 945342.

Christmas Parties: Join us December 2nd-22nd - Lunch and Dinner. Reserve for 10+ people and 1 person dines for FREE. Only £5 deposit per person to secure your booking!

Enjoy a sumptuous Christmas Day menu without lifting a finger!! Reserve your table anytime between noon and 3pm! £60 per adult, Children under 12, £35 (half portions) Under 2s Free. You can sit back and relax as the table is yours for the duration of service, with the restaurant closing at 5pm, deposits required.

New Year's Eve Party Night with music from 'The Cover Project'. Everyone welcome and there is no admittance charge. We will be serving Thai Curry or Chilli for £7.50 per person.

New Year's Day BBQ: tickets £9.95 (adult) £4.95 (child) 3-5pm. Full menu also available noon-2pm.

To view all events and menus check out the website.

[www.jollybrewersmilton.co.uk](http://www.jollybrewersmilton.co.uk)

---

## White Horse

Tel: 01223 860327

Bar billiards winter league has started, but it is never too late to join us. The new dartboard has been successful in the public bar. Poker continues to be well supported, starting at an earlier time of 8pm on Wednesdays. Thursday Quiz night from 9pm: new teams very welcome, free to play.

Balti is still available with our full menu on Thursday evening, from 5:30pm. Chef's homemade Thai and Pies have continued to be ever popular with Adam's varied specials, including a wider range of vegetarian dishes.

We are taking Christmas bookings: pre orders (with a small deposit) only please, for small and large groups up to 40 people. Our chef has put together a varied menu for all to enjoy. Opening dates for Christmas and New Year will be up so please pop in to see all the times and updated events.

Karaoke 5th December and again on New Years Eve. Free entry but please reserve a table for meals if eating from our special New Years Eve three-course menu.

We are open for food on New Year's Day, noon-2:30pm and 5:30-8:30pm.

We have a Facebook Page ("The White Horse Milton"), which is helpful for updated news. Look out for signs for our Winter Beer Festival date.

Thank you all for the support and friendship over this past year. We wish you all a Happy Christmas and Peaceful New Year.

*Alan, Ava, Adam, Kimberley, Shaun, Charlie, Jonathan, Daro, Lynda and Julian*



**YOUR PROPERTY LOOKED AFTER AS IF IT WERE OUR OWN**

**LETTINGS  
LETTINGS  
& LETTINGS,**

**IT'S ALL  
WE DO,  
7 DAYS A  
WEEK**

Lettings and  
Property Management  
Specialists  
Over 30 Years  
Experience in the  
Cambridge Lettings Market  
24/7 contact

Direct line to Jo Clark  
**07976 463 944**  
Direct line to Nicola Webb  
**07896 352 160**  
Office 01223 967277  
or 01954 214441

[www.letsrentcambridge.co.uk](http://www.letsrentcambridge.co.uk)  
[info@letsrentcambridge.co.uk](mailto:info@letsrentcambridge.co.uk)



Lettings and  
Property Management  
Specialists



**Zoopla.co.uk**  
**Finda Property.com**

## Landbeach and Milton Baptist Church

### Sunday Services

- 10.30am Family Service
- 6pm Evening Worship

### Midweek Home groups

- Tues 7.30pm, Landbeach
- Thurs 10.30am, 143 Waterbeach Rd.

All are welcome to our small but friendly fellowship. Further details from Maureen Clark, tel 01954 250118

### EMPLOYMENT OR FAMILY PROBLEMS?

- \*Settlement Agreements\*Unfair Dismissal\*
  - \*Discrimination\*Breach of Contract\*
  - \*Divorce\*Children Disputes\*
  - \*Financial Settlements\*Separation Agreements\*
- FREE INITIAL ADVICE**

**SMITH  
MAY  
SOLICITORS LLP**

Barnwell House, Barnwell Drive,  
Cambridge CB5 8UU

**BRIDGET GILTINANE – Family Lawyer**

[bridget.giltinane@smslaw.co.uk](mailto:bridget.giltinane@smslaw.co.uk)

**JOANNE MAY – Employment Solicitor**

[joanne.may@smslaw.co.uk](mailto:joanne.may@smslaw.co.uk)

**CALL 01223 415372**

**FREE PARKING**

[www.smslaw.co.uk](http://www.smslaw.co.uk)

### Sunday services

**St. Paul's  
MILTON**  
Church at the heart of the community

### Midweek groups & events

#### 8am Holy Communion

A quiet, reflective way to  
start the day.

#### 10.30am Morning Worship with Children's Groups

Designed to cater for the  
whole church, from ages  
0-100+. Refreshments  
served.

**Evening Services**  
See website.

Little Rainbows Toddler  
Group, Parents & Under  
1s, Lunch Club, Mothers'  
Union, Stitchers' Club,  
Reading Group ...

For full details of all  
these and more  
please visit:

**[allsaintsmilton.org.uk](http://allsaintsmilton.org.uk)**



## Wildlife Notes

The leaves finally seem to be falling in great numbers but I've been a little disappointed with the lack of many autumn colours this year. But after such a lovely warm and dry September and fairly benign October, I'm not sure it's correct to complain about a slight lack of leaf colour. Maybe that good weather made up for a not terribly good August?

The swifts seemed to leave even earlier than normal, although it's not as if they announce their departure. You just suddenly realise you've not heard or seen them for a few days. The swallows are a little better at least at hinting they might be thinking of going. In early September, along the river, by the houses the other side, where there are overhead wires, a very large number were lined up. They were bobbing on and off, perhaps getting a last meal of insects from above the river or the field.

I saw my now usual early September kingfisher, in several different places on subsequent days. The difference this year is that I've had sightings on various days well into October, mostly in the Country Park but a couple of times on the river at the bottom end of Fen Road. I'm wondering whether we might be lucky enough to have a kingfisher having taken up residence in the Country Park. The RSPB says "The size of the territory depends on the amount of food available, and on the bird population in the area. Territories tend to cover at least 1km of river, but may extend over 3-5 km. Any nearby waterbody that provides good fishing will be included in the territory" so my current hypothesis is that I'm seeing the same bird in both places, as the river can be very busy but the Country Park has some nice quiet bits. Perhaps there is also a good mix of food between the two?

I've seen few winter migrants back yet, possibly as the weather has been so warm. I finally saw a couple of female tufted ducks in the Park in mid-October, joined by a male when the zombies arrived! Two male and one female shoveller also turned up the last weekend of October. If previous winters are repeated, there will be plenty more of interest as the season progresses.

*Heather Coleman*



**AG First Aid Training**

**Amelia Grant**  
First Aid Trainer Instructor

31 Old School Lane  
Milton, Cambridge  
[ameliagrant@btinternet.com](mailto:ameliagrant@btinternet.com)  
<http://www.agfirstaidtraining.co.uk>  
07795680733



*Luxury therapies at affordable prices.*

**No27**

**THERAPY ROOM**  
Tracy Wesson  
Holistic Therapist  
27 Fen Road · Milton · Call 01223 501534  
[WWW.NO27THERAPYROOM.CO.UK](http://WWW.NO27THERAPYROOM.CO.UK)

20% OFF  
all treatments  
on your first  
booking

## Junior Parkrun

### What is Cambridge junior parkrun?

It is a 2k run for juniors only (4-14 year olds). If you are not a junior, please try the regular Saturday parkrun event instead.

### When is it?

It is held every Sunday at 10am.

### Where is it?

Milton Country Park. The course is run entirely on gravel paths. Some sections of the course may accumulate mud, leaves and puddles after rain. The course will be marshalled so that juniors will be in sight of a marshal at all times.

### What does it cost to join in?

Nothing - it's free! Please register before your first run and only register with parkrun once. Don't forget to bring a printed copy of your barcode (request a reminder).

### How fast do I have to be?

The aim is to have fun. Please come along and join in whatever your pace!

Every week we grab a post parkrun coffee in Café Diem - please come and join us!

For more information, visit:

[www.parkrun.org.uk/cambridge-juniors](http://www.parkrun.org.uk/cambridge-juniors)

## Charity Bike Ride Completed!



Jason Butcher from Knights Way has just returned from completing the Ride Across Britain where he cycled 969 miles from Lands End to John O'Groats in 9 days. In the process he has raised over £3,500 to support children suffering with HIV/AIDS in Lesotho. Around 41,000 children (23%) live with HIV/AIDS, and money raised will go towards increasing antiretroviral treatment which is currently only received by 10% of the children. So if you want to donate to recognise his efforts, visit

[www.justgiving.com/jason-butcher1](http://www.justgiving.com/jason-butcher1)

## PHYSIOMOBILE

**Sarah Koets BSc MCSP MAACP**

Registered with the Health and Care Professions Council

- Back and neck pain
- Sports injuries
- Post operative rehabilitation
- Arm, hand and shoulder problems



- Hip, knee and ankle pain
- Repetitive strain injuries
- Postural problems

Self referral accepted Recognised by all major insurers

Milton Surgery, 87 Coles Road, Milton, Cambridge, CB24 6BL

**07790 512094** - [www.physiomobile.co.uk](http://www.physiomobile.co.uk)

Also at: Fen Ditton and Girton

## Grants for Future Sports Stars

South Cambridgeshire sports stars of the future can now apply for a share of £16,700 of funding to help them reach their full potential. The funding has been announced by South Cambridgeshire District Council in a continuation of its Elite Athlete Grant Scheme. Since 2009, over 80 young talented sports performers have been awarded more than £56,000 to support their sporting dreams.

Grants of up to £2,000 are available to support athletes at all stages of their sporting careers, whether they are competing regionally, making steady progress at national level or representing GB in world class events.

Rhodri Furlong, a Histon-based hockey player, was awarded £500 from the scheme last year and went on to captain Wales in the U18s at the European Championships. He says: "The grant gave me the opportunity to fully commit to the Welsh programme where I gained access to a wide range of support and went on to compete internationally. Without the Council's support, this may not have been possible."

Cllr Mick Martin, South Cambridgeshire District Council's cabinet member with responsibility for sport, said: "I'm very pleased to announce the continuation of this scheme and look forward to awarding grants to more exceptional young sportspeople with South Cambridgeshire connections."

For more information about the scheme and an application form visit [www.scambs.gov.uk/elite-athlete-award-scheme](http://www.scambs.gov.uk/elite-athlete-award-scheme) or call 03450 450 500. The deadline for the next round of applications is December 31st 2014 and awards will be made by January 31st 2015. Previous applicants may apply.

### GJK Accountancy Limited

**Accountancy services**  
**annual and monthly accounts**  
**bookkeeping**  
**VAT and tax returns**  
**Company formations**

griffith.kinsman@ntlworld.com  
 30 The Rowans, Milton, CB24 6YU  
 Mobile 07710 503 148

## Curry & Pizza

Selling delicious...

- ♦ Curry
- ♦ Southern Fried Chicken
- ♦ Burgers
- ♦ Pizza



6B High Street, Milton, Tel: 861948

### Dance, Movement and Storytelling for Children

Through lively classes we invite children to participate in stories and movement in order to encourage independent thought and enquiry. Our material is lively, educational and creative, encouraging both group interaction and individuality.

#### Classes on Friday afternoons at Milton Primary

3.30pm (2-4 years) and  
 4.15pm (4-7 years)

We also run workshops in the holidays and Children's Birthday Parties!

Tel. 07837844759

michelle@creativemovements.co.uk

[www.creativemovements.co.uk](http://www.creativemovements.co.uk)

[www.facebook.com/cambridgecreativemovements](http://www.facebook.com/cambridgecreativemovements)



## Cambridge Vaulting Club at National Champs

The Cambridge Vaulting Club, part of the College of West Anglia's Cambridge Horse Sport Academy, attended the English Vaulting Championships on September 21st at Moulton College.

The team had spent all summer working hard to prepare for the competition, where they did their first ever canter class, as well as a 'Toy Story' themed team freestyle.

The squad came 5th overall which was a fantastic result given that both the horse and vaulters are still very new to the sport.

The Club was established two years ago and started with a loan horse Herbie. The group now train weekly and compete with college-owned horse, Sandie. Vaulting is a rewarding and fun discipline that combines horses and gymnastics.

For more information on vaulting please contact [jrouchy@col-westanglia.ac.uk](mailto:jrouchy@col-westanglia.ac.uk).



## Godden Auto Services Ltd

*Benet Garage, Cambridge Road, Milton, Cambridge, CB24 6AW*

**Servicing and repairs  
to all makes of vehicles**

**MOT TESTS WHILE YOU WAIT**

**By appointment only**

**[www.goddenautoservices.co.uk](http://www.goddenautoservices.co.uk)**

**All major credit cards accepted**

**Tel: 01223 420380**

**Opening times: Monday to Friday 8.30am—5.30pm, Saturday 8.30am—12.30pm**