



[www.mvv.org.uk](http://www.mvv.org.uk)

# Milton Village View

Issue No. 120 – November 2015

## In This Issue...

- Fayre Committee Needed!
- Christmas Events
- Calaid Visit
- Historic Milton Maps

*And much more!*



Photo: CSLT

# Contact Us

Send us your news and photos:

**vv@miltonvillage.org.uk**

1 Knights Way, Milton, CB24 6DE

Deadlines for articles are:

**12th January**

**12th March**

**12th May**

**1st September**

**1st November**

Issues will be published approx.  
2 weeks after the dates above.

## Online Archive

Find back copies of Village View  
(back to April 2011) on our website:

**www.mvv.org.uk**

Printed by Langham Press Ltd.

**Delivered Free  
Circulation 2,000**

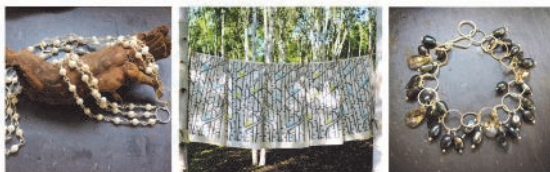
### **Publisher's Notice**

Whilst every effort is made to ensure accuracy the publisher accepts no responsibility for errors or omissions. Views and opinions expressed in the Village View are not necessarily those of the publisher or the editorial staff. The publisher does not accept any responsibility for claims made by advertisers.

## Winter Open Studios

Are you looking for original gifts made by professional local independent artists and craftspeople, without leaving the village? Then why not visit The Garden Studio, 6 Cambridge Road, Milton on the weekend of Saturday 28th and Sunday 29th November?

Jewellers Cheryl Bird and Linda Bartlett are joined by illustrator Alison Hullyer for a festive Winter Open Studio. They will be showing beautifully made items including necklaces, bracelets, earrings and cuff links as well as Alison's range of screen printed tea towels and coasters.



Alison will also have a selection of products she has designed for Phoenix Trading such as cards, wrapping paper, bunting, paper-chains and advent calendars.

Look out for the white flag on the road through the village, parking available in the driveway beside the house. Doors open at 10am and you will be welcomed with mince pies and mulled cider. Closes at 4pm. For more information see:

[www.hullyer.co.uk](http://www.hullyer.co.uk)

[www.divinedecadencejewellery.co.uk](http://www.divinedecadencejewellery.co.uk)

*Alison Hullyer*



If you use our advertisers, please mention Village View. Thank you to our volunteer distributors.

## November

- 28th/29th** Winter Open Studios, 6 Cambridge Road, 10am-4pm (p.2)  
**Sun 29th** Christingle Service, All Saints', 4-5pm  
*A service of light for all the family*



## December

- Fri 4th** Coffee Morning/Bring & Buy, Barnabas Court, 11am-12 (p.4)  
**Sun 6th** Creative Christmas Workshops, Community Centre Annexe (p.5)  
**Mon 7th** Create for Christmas, All Saints' Church Hall, 7.30-9.30pm  
*Book online at [www.allsaintsmilton.org.uk](http://www.allsaintsmilton.org.uk)*  
**Weds 9th** EACH Carol Service, All Saints', 7.30pm  
**Fri 11th** Carols Round the Tree, Lion & Lamb, 6.30pm  
**Sat 12th** Christmas Fayre, Phoenix Trust (Country Park), 10.30am-3.30pm (p.4)  
**Sun 13th** Messy Christmas, All Saints', 4-6pm *A Christmas celebration for all ages*  
**Sun 13th** EACH Santa Fun Run, 10am, [www.each.org.uk/santarun](http://www.each.org.uk/santarun)  
*Get in the festive mood while raising money for EACH*  
**Mon 21st** Carols by Candlelight, with mulled wine & mince pies, All Saints', 7.45pm  
**Mon 21st** United Service, Landbeach & Milton Baptist Church, 6pm  
**Thurs 24th** Crib Service, All Saints', 4pm *Family nativity service*  
**Thurs 24th** Midnight Holy Communion, All Saints', 11.30pm  
**Fri 25th** Christmas Day Holy Communion, All Saints', 8am  
**Fri 25th** Christmas Day Celebration, All Saints', 10.30am  
**Fri 25th** Christmas Service, Landbeach & Milton Baptist Church, 10.30am



## January

- Sun 3rd** Epiphany Carols with the Wren Choir, All Saints', 3.30pm

*See pp.18-19 for more events at the pubs.  
 See [www.milton.org.uk/diary.html](http://www.milton.org.uk/diary.html) for more event details.  
 See [www.miltoncountrypark.org](http://www.miltoncountrypark.org) for more park event details.*

## No Milton Village Fayre in 2016?

Unfortunately, we do not have a Committee to run the 2016 Summer Fayre, so it looks as though this popular village event will no longer be held.

However, if there is anybody interested in forming a committee to organise the fayre but would like to know more about what is involved, please contact Andy at the Community Centre on 862763 or [mcc@miltonvillage.org.uk](mailto:mcc@miltonvillage.org.uk).

*Andy Gray (Community Centre Manager)  
 Rob Farrington (Community Centre Chairman)*



## Phoenix Trust Christmas Fayre

Christmas is coming to Phoenix, with our Christmas Fayre on Saturday 12th December from 10.30am to 3.30pm.



Come and visit Santa, plus lots of festive goodies on sale. There will be refreshments, face painting and Christmas wreaths for sale - made on site.

## Plus the Grand Christmas Raffle

Prizes to include:

- Apple iPad Air
- Apple iPod Touch
- Extra Large Bottle of Rosé Wine

Tickets: £1 each, on sale now at Phoenix Trust Milton sales office.

## Milton Good Companions Coffee Morning



Bring & Buy  
Cakes/Christmas  
Raffle

11am to 12 noon  
Friday 4th December 2015

at Barnabas Court

Everyone Welcome

*Hay play at the Autumn Festival Photo: CSLT*



## PAINTING DECORATING GLAZING

Mobile  
07860 453533  
Phone:  
01223 700800  
(local resident)



**B.J.LEONARD**

## Stephanie's MILTON'S UNISEX HAIRDRESSERS

Professional Hairstyling for Men and Women

Telephone: 01223 420526

*Discount for all new clients*

49 Cambridge Road, Milton, Cambridge, CB24 6AW

## Creative Christmas Workshops for Children

Creative Movements are running 2 holiday workshops on Sunday 6<sup>th</sup> December with dance, movement, storytelling, role-play and Christmas artwork to take home.



Workshops are 2.5 hours long so parents can drop off and finish their Christmas shopping!



**Mr Men & Little Miss Christmas Party** - 3-6 years  
10am -12.30pm

**The Elves and The Shoe Maker**- 4-8 years 1.30pm  
- 4pm

Workshops are both at the Milton Community Centre Annexe.

£20 per child (20% discount for additional siblings); spaces are limited so advance booking is recommended.

Contact Michelle on 07837 844 759 or email:

[michelle@creativemovements.co.uk](mailto:michelle@creativemovements.co.uk)

[www.creativemovements.co.uk/](http://www.creativemovements.co.uk/)

 [cambridgecreativemovements](https://www.facebook.com/cambridgecreativemovements)



**HEATING & PLUMBING  
SERVICES LTD**

- GAS SAFE REGISTERED
- Boiler Installation - Gas & Oil
- Complete Bathroom Design and Installation
- Landlords Certificates
- Power Flush
- Tiling
- Under Floor Heating
- Gas Boiler Servicing
- Free Estimates

*\* Covering Cambridge for 30 years \**



**Ph: 01223 242544**

Email: [malcolm.potts@btconnect.com](mailto:malcolm.potts@btconnect.com)  
Unit 8, Ronald Ralph Court, Wadlows Road,  
Cambridge, CB5 8PX



2163

**J.P.Morley  
Roofing**

Est. 1985



**All types of roofing  
Flat roof specialist**

1 Old School Lane, Milton

Home: 01223 863259

Mobile: 07941 198771

[josephmorley@btinternet.com](mailto:josephmorley@btinternet.com)

## Calais Refugees Help — Thank you!

Following all the sad news in the press about the plight of refugees escaping war, a number of village residents wanted to do something to offer help and show some care and compassion. All Saints church therefore arranged a collection of clothes, blankets, tents, food, etc. We also organised a sale to raise money.

Cakes at the  
Calais sale



The response was incredible; donations flooded in from the village and surrounding area. This enabled us to contribute tents, sleeping bags and blankets and too many food parcels and packs of toiletries to count, to a convoy leaving Cambridge for Calais.

The following week, a van packed with clothes and more blankets and sleeping bags was taken to a CalAid depot (see *next page*). CalAid are a charity that take supplies out to

the refugees as they are needed and work with other charities on the ground in Calais. We still have a large bag of saucepans and cooking utensils and lots more food to send out. In addition to all of this we received cash donations totalling over £400.

The sale received some wonderful donations and was supported well. A great team served refreshments and some wonderful people cooked delicious homemade cakes. The sale raised over £300. A huge thank you needs to go to everyone who helped. Those who donated, sorted, packed and delivered donations and to the team that ran the sale and to those who and to those who supported this event. It was truly a great to see the village coming together in this way, to support those in such great need. Thank you

*Michelle Peters*



- Servicing, Installation and Repairs
- Gas Boilers, Fires, Cookers and Central Heating Systems
- Powerflush Cleansing of Central Heating Systems
- Energy Efficiency upgrades
- Landlord Gas Safety Checks and Certificates

Contact - Eddie Kikas  
Your Local Gas Specialist

Tel/Fax: 01223 861810 Mobile: 07831 228181

Email: [miltongas@btinternet.com](mailto:miltongas@btinternet.com)  
[www.miltongas.co.uk](http://www.miltongas.co.uk)



### Pilates Classes Milton & Landbeach

Mon 9.30am - Mixed Ability Mat Class (MCC)  
Mon 10.30am - Mixed Ability Mat Class (MCC)  
Tues 6.20pm - Intermediate Mat Class (Sch)  
Tues 8.15pm - Mixed Ability Mat Class (Sch)  
Fri 10.30am - Mixed Ability Mat Class (LVH)

Contact Liz on 07768 155278

or [liz.dolman@lovepilates.co.uk](mailto:liz.dolman@lovepilates.co.uk)

NVQ level 3 Pilates & PureStretch Instructor

For further info, visit [www.lovepilates.co.uk](http://www.lovepilates.co.uk)

## CalAid visit

On 4<sup>th</sup> October, Jeremy Thorne and I drove a van from Milton to the CalAid depot in Slough to deliver Milton's contribution in aid for refugees and migrants in Calais. This was quite an experience: CalAid were clearly only expecting, perhaps, five vans all afternoon, but there were five unloading all the time we were there.

We had to wait over an hour before we could get the van in position to begin unloading. It was as if every community in the South of England had sent something. The whole place was filled with a spirit of generosity quite at variance with the attitude of politicians.

So a big thank you to Michelle, Pearl and others at All Saints Church for organising and coordinating everything, and to those who sorted everything into bags and also for all of you who gave something, because without you we'd have had nothing to give.

*Michael English*

## A Year of Osteria

It has been one year since we transformed the Waggon & Horses here in Milton and we look forward to the next one. It has been a challenging year as this is our first business but we are really pleased with the results and we believe that this wouldn't have been possible without the support of the local community: for this we would like to thank you all.

The festive season is coming and we have few offers available in the next months.

Throughout November we are offering for £20 a Tagliere Misto (platter of cheese and cured meat), a selection of bread and a carafe of house wine; this is to experience the true spirit of an Osteria, where you can have a full blown meal or just few drinks and a bite.

As we like to do things a bit different to celebrate your Christmas in December we will have a 5 Course Tasting Menu at £35 per person. We are taking bookings and if you want more information please call us, pop in or visit our website.

Finally, our Set Lunch Menu is still available Tuesday to Friday: three courses and a drink for just £15 or choose only main course for £7.

*Hope to see you soon, The team at Osteria*

## Harmony

### Hair and Beauty Salon

Expert hair stylists for Men, Women  
and Children.

Beauty therapists offering a wide range  
of treatments.

Chiropody (HCPC Registered). Sports therapy and massage  
(See website for more details)

Gift vouchers available

6 High Street, Milton, Cambridge, CB24 6AJ

[www.harmonysalon.co.uk](http://www.harmonysalon.co.uk)

Call **01223 863636** to book an appointment

Open 9 - Late Mon - Fri

9 - 2pm Sat





## Street Lighting

Thank you to everyone who sent in their answers to our survey both online and in paper form. When we met we were able to review all the information before coming to the view that we could not take over the cost of funding the street lights from the County Council, this was also the view of the majority of the respondents to the survey.



From April 2016 the County propose to turn off all the lights after midnight apart from those previously listed here. They will also be dimming all lights.

We are sorry for the short period you had to respond to our survey but we were given very little time ourselves to deal with this matter and tried our best to inform you over the summer period. We are also grateful to the many volunteers who at very

short notice came forward to help deliver the leaflets we produced throughout the village and our village Post Office for holding a response box.

*Milton Parish Council*

### Parish Councillors

Below is an updated list of your councillor contact details (for email addresses, please visit the website at [miltonvillage.org.uk](http://miltonvillage.org.uk) and click on 'Meet Your Parish Councillors'):

#### Parish Councillors

Jane Coston ( <i>Chair</i> )	861447*
David Burch	862485
Rob Farrington	860160
Gary Heaney	690317

Tom Leavens	441129
David Owen	861447*
David Stirrups	470355
Richard Summerfield	860715
* - c/o Parish Office	

#### Parish & District Councillors

Anna Bradnam	862364
Hazel Smith	860752

#### County Councillor

Maurice Leeke	441562
---------------	--------

Parish Clerk: [clerk@miltonvillage.org.uk](mailto:clerk@miltonvillage.org.uk)



**Dance Fitness Class**

#### Zumba Classes in Milton 2014

#### Licensed Zumba Instructor Liz Dolman

Milton Primary School

Tuesday Nights 7.15pm

All Abilities Welcome

Weekly £6 or 5 Session Card Available

For further information

contact Liz on 07768 155278

or [liz.dolman@love2zumba.biz](mailto:liz.dolman@love2zumba.biz)

Visit [www.lovepilates.co.uk/zumba](http://www.lovepilates.co.uk/zumba)

## AMBASSADOR LODGE BED & BREAKFAST

37 High Street, Milton, CB24 6DF  
(next to the Waggon & Horses pub)

Friendly, family-run B&B

Contact: Phil or Fizz Turner  
Tel: 01223 860168

[www.ambassadorlodge.co.uk](http://www.ambassadorlodge.co.uk)  
e-mail: [ambassadorlodge@yahoo.co.uk](mailto:ambassadorlodge@yahoo.co.uk)



## Parish Chairman's Update

### New Parish Councillors

We are very pleased that we now have eleven parish councillors as we welcome David Burch, David Owen, Tom Leavens and Michael Payne. We are still looking to fill four more positions so if you would like to volunteer to become a parish councillor I would be very pleased to hear from you.

### Christmas Tree Lights

This year we are struggling to find someone to put up our usual Christmas lights and so sadly if we can not find anyone then there will not be the usual display.

### North Lodge new recreation ground and pavilion

At last after many years of work to secure new facilities we are nearing the time when the new pavilion and recreation ground are to be handed over to us. We are still working through the legal agreements and a few more issues are still to be resolved on site before the hand over of these facilities are completed. The new facilities were negotiated by the Parish Council as part of planning gain when the houses at North Lodge were planned.

### Hedges

Please could you have a look at your garden and see if the planting is overhanging the footpath and if so please could you arrange for it to be cut back? As generally most footpaths are the responsibility of the County Council, it is them that will contact you if your planting etc. is impeding the footway. On occasions we have contacted local residents where there is a problem to remind them of their responsibility.

*Jane Coston, Chairman of Milton Parish Council*



*For all your Concrete  
And Wooden Garden Products*

Paving, Edging, Ornaments, Bird Feeders, Planters, Trellis,  
Nest Boxes, Pot Hangers, Picnic Benches and much more

**A limited range of Pot Plants  
for your Garden, Planters, and Pot Hangers**

**Tel: 01223 420669**

www.phoenixtrust.org Unit 8, Milton Trading Estate

*Supported work experience for people with learning difficulties*

### SILVER SERVICE TAXI

*Licensed Taxi Service,  
Reliable, Local & Friendly*

**Ian May**

**07989 197816**



Email: [silverservicetaxi@gmail.com](mailto:silverservicetaxi@gmail.com)

**Multi-Seater 1 to 8 passengers  
Airport & Group Bookings welcome  
Specials Needs & A Speciality**

[www.silverservicetaxi.co.uk](http://www.silverservicetaxi.co.uk)

## Milton Primary School in Top 10 for Donations

Milton Village school was in the top ten for donations into a school clothing bank in a national competition run by the Salvation Army last term. This is an amazing achievement and we want to recognise the help of the whole village community in collecting and donating items. In 10 months an amazing 2.5 tonnes has been donated raising over £525 for the school, and the same fantastic amount for the Salvation Army's work with people in need. Thank you Milton!

The bank is just inside the Humphrey's way gate of the school and can be used by anyone whenever the gate is open. Clothes, household linens, bags, belts, shoes, boots, towels, sheets, blankets and duvet covers can all be donated, but please do not leave duvets themselves or pillows or cushions.

Don't forget that even ripped and stained items fit only for recycling can be donated. Less than 1% goes to landfill so it is environmentally friendly too. Profits from the bank are split equally between the Salvation Army and the school. Please ensure everything is clean and dry and in a closed plastic bag.

Thank you to everyone who has made use of the school clothing bank. Please continue to remember it whenever you have a clear out, and support both your village school and the Salvation Army's work with people in need.

Many thanks,

*A Turner*



### C H LUMB

(BUILDERS)

**DRAINAGE - GUTTERING  
UPVC FACIAS & SOFFITS  
PATIOS & FENCING  
ALTERATIONS**

01223 354402

Mobile 07762026290

### Amethyst Caravan Holidays

**Static Caravans available to  
rent at Manor Park  
Hunstanton**

**Tel: 07795 087907**

Email:

[amethystcaravans@hotmail.com](mailto:amethystcaravans@hotmail.com)

# From the Archives

10 Years Ago: Dec 2005

25 Years Ago: Dec 1990

## Parish Office takes shape



New parish office being built on Coles Road Rec. behind the bowls pavilion

## Country Park

The photograph shows the approach area to the park off the Tesco roundabout and will be leveled for the main car parking areas.



# Unwell? Choose Well



Your **pharmacist, GP** or **NHS 111** can help you get treatment quickly

**A&E is for life threatening emergencies only**



for illnesses like headaches, sore throats and stomach aches -  
**Self-care**

for illnesses like coughs and colds -  
**see your pharmacist**



for illnesses that won't go away -  
**see your GP**

unsure where to go or need advice? -  
**call 111**



MSA Fireworks Night  
Photo: Paul Milligan



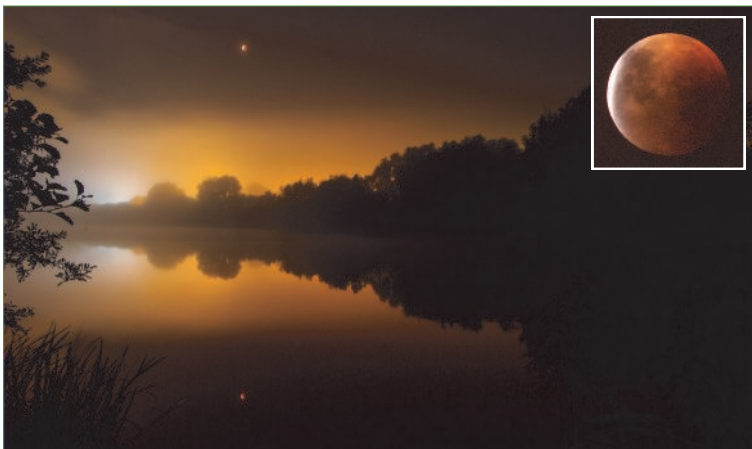
LNER Thompson B1 steam locomotive No 61306, 3 Sept 2015, Terry Briggs



## Blood Moon

The full moon the evening before was bright enough to read the paper by. However with the moon in the earth's shadow, it was very dark. The faint red moon needed a long exposure, causing the low clouds to shine bright from the village street lights.

*Stephen Bennett*



## Need glasses?

Save money, buy direct from ALL EYES Specs

Complete specs from only £9.00!\*

- Repairs & emergency specs\*
- Reglaze your own specs\*
- Complete sunspecs from £49.00\*
- Specs for all sports
- Excellent customer service



\*T & C's apply.

Just bring your new prescription to:

ALL EYES Specs Makers

20 Norman Way Ind. Park

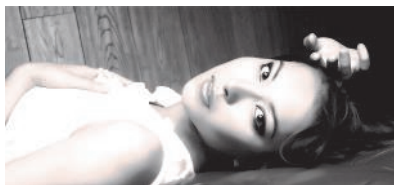
Over, Cambridge CB24 5QE

Tel: 01954 231545; 07824 706969

Mon - Fri; 9am to 5pm

(PLEASE RING FOR AN APPOINTMENT)

[www.all-eyes.co.uk](http://www.all-eyes.co.uk)





## New Cygnets Opens

After years of planning and organising, and a very busy summer of moving, The Cygnets Milton Preschool are finally in their new home on the Milton Primary School site. We had a very well attended Open Day on 4<sup>th</sup> September, and then opened to our first children on Monday 7<sup>th</sup> September.

We still have spaces available for children aged 2-4, so please get in touch with Alison Macklin if you would like more information or to enrol your child.

In other news, we need a shed to store our outside bikes and equipment. If anyone can help either with a second hand shed or in erecting a new shed, please get in touch on [milton.cygnets@gmail.com](mailto:milton.cygnets@gmail.com) /07902 116130.

## Free Transport to Tesco

Do you have difficulty getting Tesco?

Milton Parish Council organises Milton Trolley Bus which is a fortnightly minibus service to Tesco for anyone who is elderly or infirm and without transport. The minibus runs on a Monday morning every other week and residents have approximately an hour at Tesco before their return journey.

This is not only a useful service for residents but is also a social event for many. If you would like to access this service please let us know by calling the Parish Office on 861447 or email: [clerk@miltonvillage.org.uk](mailto:clerk@miltonvillage.org.uk).



Ladybird room (ages 2-3)



Bumblebee room (ages 3-4)

### AFFORDABLE STORAGE

- ✓ SECURE STORAGE
- ✓ FLEXIBLE HIRE PERIODS
- ✓ COMMERCIAL & DOMESTIC
- ✓ RANGE OF SIZES AVAILABLE
- ✓ OFFICE & RETAIL
- ✓ 24 HOUR ACCESS
- ✓ EXCELLENT STORAGE
- ✓ CCTV MONITORED
- ✓ PICK-UP / DELIVERY SERVICE

**01223 420440 / 07711 084164**

email: [mwheeler.bromley@btopenworld.com](mailto:mwheeler.bromley@btopenworld.com)

UNIT 105, NORMAN INDUSTRIAL ESTATE, MILTON, CAMBRIDGE, CB24 6AT

## R.B. Electrical LTD

### N.I.C. Registered

**Your Milton Domestic  
& Industrial Specialists**  
**25 Yrs Experience**

**Tel. 365200**

## Milton WI

WI Members, led by Acting President Christine Copeland, took our October meeting. They had organised a very interesting talk on the origins and varieties of hyacinths which was thoroughly enjoyed by all.

December's meeting will be a week earlier than usual with a celebratory dinner for all members: it will be Milton WI's 90<sup>th</sup> birthday. In January, we will be welcoming Ellee Seymour whose topic will be "Shop Girls – story of a Cambridge Department Store", and in February Andrew Sankey will be talking on the "History of the Cottage Garden".

In addition to our monthly meetings, lunches and games afternoons will be planned over the winter months. Federation activities for members will be available locally. Our two darts teams are practising for the new season and we wish them well in their matches against other WI teams.

As the WI's national and local centenary celebrations come to a close, we look back on a wonderful year of fun and friendship. Much work has gone into the year bringing the WI to the forefront, and now, with the knowledge of what it is about, we hope new members will come forward. Anyone can come along for a 'taster': contact our President Gill Offley (01223 293231) or Secretary Bridget Crow (01223 441755), or just come along. Meetings are on the third Tuesday of each month at 7.30pm in the Church Hall.

*Anne Newman*



If your children are interested in nature and wildlife then don't miss the monthly meetings of the Cambridge Wildlife Watch, the junior branch of the Wildlife Trusts, at Milton Country Park. The sessions take place on the first Saturday of each month and are aimed at children aged 8 to 12 but younger children are welcome accompanied by parents.

The next meeting takes place on 5<sup>th</sup> December in the Park under the heading "Tree Dressing". For more details visit [www.wildlifewatch.org.uk/watchgroups/Cambridge-Wildlife-Watch](http://www.wildlifewatch.org.uk/watchgroups/Cambridge-Wildlife-Watch) or email [cambridgewildlifewatch@hotmail.co.uk](mailto:cambridgewildlifewatch@hotmail.co.uk)

### PHYSIOTHERAPY

Treatment for sports injuries, back and neck pain, joint problems etc.

**Liz Cradock** MCSP, MICT  
Chartered Physiotherapist and  
Reflexologist, HPC registered

*Recognised by major medical insurance companies*

Treatments at:

'Wellbeing at 17', 17 High Street,  
Waterbeach CB25 9JU

**Tel: 01223 860928 Mob: 07714 052389**  
**Email: [liz.cradock.physio@gmail.com](mailto:liz.cradock.physio@gmail.com)**

### STRIKE FIT

Fridays 1pm-2pm  
Milton Community Centre

also available  
**1 to 1 personal training**

Contact : Alex Campbell  
Tel. 01223 862184 or 07746  
122749

Email [alex@alexercise.co.uk](mailto:alex@alexercise.co.uk)  
[www.alexercise.co.uk](http://www.alexercise.co.uk)

## Sing to Remember

Sing to Remember is a new singing group for those with dementia and their carers, led by Jan Payne, a highly respected local musician, teacher and choir leader. The aim is to encourage those whose memory loss makes them uncomfortable joining a mainstream singing group. Partners, friends and carers are welcome and encouraged to join in the fun.



The weekly group will be starting on 3<sup>rd</sup> December at Landbeach Baptist Church, with tea and biscuits at 11am then singing from 11.30-12.30. The first session is free, then £5 per person per session to include their carer.



If you would like to come along to the group, or you think you could volunteer for a couple of hours on a Thursday morning, please contact: Jane Johannessen, Community Development Officer, Care Network on 01954 211919 or [Jane.j@care-network.org.uk](mailto:Jane.j@care-network.org.uk)

## Milton Good Companions

Milton Good Companions Club has enjoyed a good year with various speakers, a summer lunch at The Dolphin, St Ives and visits from Milton School to play bingo with members.



We are always looking for volunteers to help with the running of the day. In particular we are looking for persons who can spend the day as a leader, who can spare one Friday a month. We meet on a Friday from 10.30am to 2.30pm and have 20 members. They have tea and biscuits then a hot lunch. After lunch there is a variety of entertainment arranged by the leader on the day. Those members that live outside of Barnabas Court are transported by volunteer drivers using their own cars.

We are always looking for volunteers to be leaders and drivers: let us know if you can help. And contact us if you or someone you know is interested in joining the club.

*Barbara Brown (Secretary; Tel: 860044), Margaret Nunn (Chairman; Tel: 860829)*

1863  
de  
Philibert Roustin

@ milton post office

coffee  
*postino*

Segafredo  
ESPRESSO

The Post Office, 2 Coles Road, Milton, Cambridge, CB24 6BW  
[postinocoffee.com](http://postinocoffee.com)

## Local Interest

# Milton MU



In September Milton MU members and friends went for a trip on the Ladybird (left) along the River Great Ouse. The weather was pleasant and travelling on the deck afforded a superb view of the natural life found along the river bank. At lunchtime the boat moored in St. Ives for a coffee stop and an opportunity to walk around this attractive market town.

In November Milton MU held a sausage sizzle (right) for members and friends from Stapleford. There was a bring and buy which raised money for MU funds, a table top quiz and lots of opportunity to chat and catch up with longstanding friends.



### Forthcoming Events

In December our Christmas meeting will be held on Tuesday 1 December at 7.30 pm in the church hall. This will be a quiet meditative service that focuses upon the theme of Advent. There will be an opportunity to donate gifts of toiletries which will be forwarded to residents at Whitworth House, a home for young, vulnerable, single women. The meeting will conclude with seasonal refreshments and as usual anyone who is interested in the work of the Mothers' Union is welcome to come along and join us.

Jackie Metcalfe

### Swedish Massage



Contact Alex Campbell on 01223 862184  
or 07746 122749  
email: alex@alexercise.co.uk

Benefits include\*:

- Relief from Stress, Anxiety and Tension
- Feelings of Deep Relaxation
- Improved Mood
- Improved Sleep
- A general sense of Wellbeing

Appointments available in Milton & Chesterton  
Sports Centre, Gilbert Road, Cambridge

\* Massage should not be used in place of conventional medical care. Always consult a GP or other Health professional for medical attention and advice.

## Matthew Harney

General Building Work  
Painting & Decorating

matthew.harney@btinternet.com

Tel: 01223 696508

Mob: 07962 398114





## Litter Brigade Reinforcements



Regular volunteers for the Village Litter Pick on Saturday 24 October were pleased to be joined by nine members of managerial staff from Tesco. Becca Clayton, Compliance Manager (in the purple coat) brought along three colleagues at the start - and five more staff, including Spencer Whitcombe, Branch Manager joined us later. It was a beautiful day and altogether we collected about 20 bags of rubbish from around Tesco, the A14 slip road, under the Jane Coston Bridge, along the bund, the A10 footbridge, Cambridge Road, High Street and Ely Road. Many thanks to the regulars and to two new litter pickers, Mariel Monk and Thomas Kugler, at the left and right hand ends of this photograph.

*Anna Bradnam*

## Winter Gritting: Can You Help?

Local volunteers can help to keep their community moving in freezing weather by taking part in the Community Gritting Scheme. Under this scheme, the parish council agrees specific routes which are important to the local community, with the county council.

Volunteers can sign up to be trained and insured by the county council. They will then be alerted when the weather is forecast to be freezing, and use equipment provided by the county council to grit these routes. If you are interested in helping, please contact the parish clerk on 861447 or email [clerk@miltonvillage.org.uk](mailto:clerk@miltonvillage.org.uk).

## Interested in Helping EACH Raise Funds?

EACH Fundraising team are on the look out for volunteers to help out with a range of tasks including help at events, bucket collections and in the fundraising office. Interested? Contact the Cambridgeshire Fundraising Team on 01223 205180 or email [cambs@each.org.uk](mailto:cambs@each.org.uk).

travel counsellors



*With us...it's personal*

### MILTON VILLAGE TRAVEL AGENT MR ELI KARRAM

IATA and ATOL Member

I can book any holiday you may have seen elsewhere  
Generally more choice and flexibility than available online  
No limit on booking size Business travel UK and abroad  
Everything financially protected, including flights only  
27 years experience No obligation quotations

**01223 855290 or 07963 841 679 any time**

[eli.karram@travelcounsellors.com](mailto:eli.karram@travelcounsellors.com)  
[www.travelcounsellors.co.uk/eli.karram](http://www.travelcounsellors.co.uk/eli.karram)

2014 awards: Queen's Award for Enterprise

## Sports Therapy Services

Sports Massage and Injury Rehabilitation



Don't put up  
with the pain

SAVE 25% on your  
first appointment

Additional offers available

call Lesley on **07940 110309**  
or visit  
[www.sportstherapyservices.co.uk](http://www.sportstherapyservices.co.uk)

Tel: 01223 860327



Congratulations to  
the White Horse,  
who have been  
awarded first  
place for the  
region's Pubs in  
Bloom!

## White Horse

Merry Christmas and A Happy New  
Year to all in Milton and thank you  
for everyone's support.

Many thanks, Ava

[www.whitehorsemilton.co.uk](http://www.whitehorsemilton.co.uk)

### HOWARD'S WAY School of Motoring

#### Manual & Automatic Cars

- Male and Female Driving Instructors
- Pass Plus Courses
- Intensive Courses
- Instructor Training
- Theory & Hazard Perception  
Confidence / Refresher
- Patient and Friendly
- Top Grade 6
- Motorway Courses

### HOWARD'S WAY WINDOWS

- Window Cleaning by Request
- Milton, Waterbeach, Landbeach
- Pubs, Clubs and Offices

T: 01223 440767 M: 07753 617310  
E: hcradock@btinternet.com www.h2way.com

### Lee Beamiss Carpentry & Building

Tel 01223 440001

Mobile 07815 118339

web site [www.leebeamiss.com](http://www.leebeamiss.com)

email enquiries@leebeamiss.com

All your re-upholstery needs  
"COVERED"

### **S.PROCTOR** UPHOLSTERY LTD.

Antique & Modern  
Domestic & Commercial

Foam Cut To Size  
D.I.Y. Sales

Family Trade Since The 1940's

**TEL: 01223 440430**

Email: [sproctorupholstery@gmail.com](mailto:sproctorupholstery@gmail.com)

C2 BUTTON END IND EST, HARSTON, CAMBRIDGE, CB22 7GX

### MILTON ANTIQUES AND COLLECTABLES

Offering a wide range of items  
Clocks, China, Glass,  
Brass, Copper, Silver plated articles  
Costume jewellery, small pieces of furniture  
Musical instruments and much, much, more

363 The Rowans Milton Cambridge

Tel No. 01223 860061

Mob: 07771620752

We also purchase good quality items.

## Lion & Lamb

Tel: 01223 860202

We are delighted to have helped raise over £1000 at the Macmillan Big Coffee Morning held at the pub on the 25<sup>th</sup> September. Huge thanks to all involved in organising, baking and enjoying! Fierce competition surrounded The Macmillan Milton Bake-off competition which was won by Sarah Corder, with her carrot cake - well done Sarah!

Our internal refurbishment is now complete and everyone agrees it looks great – do come along and see for yourselves! Christmas is fast approaching and our big outdoor Christmas tree will be appearing towards the end of November.

### FORTHCOMING EVENTS

**SOUL NIGHT** Friday 20<sup>th</sup> November with Andy Stearn and Chris Brown.

**LADIES DINNER CLUB Christmas Dinner & Wine Tasting** on 1<sup>st</sup> December – this must be booked in advance, tickets available at the bar.

Our Christmas menu is available for bookings from the 1<sup>st</sup>-23<sup>rd</sup> December, with **Christmas Party Nights** on **11<sup>th</sup> and 18<sup>th</sup> December**. Santa's in the bar on **Christmas Eve**.

**NEW** for this year we are also offering a **NEW YEARS EVE four-course dinner** with champagne and a flight of wines, followed by a superb **New Years Eve Party** in the bar with DJ Chris Light to round off the year!

Our menu and details of all Christmas events can be found on our website along with opening times and food service times throughout the festive period. Wishing you all a very merry Christmas and prosperous New Year.

Lawrence & Sally [www.lion-lamb.co.uk](http://www.lion-lamb.co.uk)

## Jolly Brewers

Tel: 01223 863895



We had a fantastic day at the Autumn Festival, it was great to see so many of you: thanks to Milton Brewery for the loan of their tent. Next year we will have more beer as we completely sold out!!

For the second year running we are one of only 26 Cambridgeshire pubs in the 43<sup>rd</sup> Edition of CAMRA Good Beer Guide! Real Ales are always on tap, plus some Festive Guest Beers, including Rocking Rudolph and Fireside, will be available during the party season!

**Christmas Parties** Join us Monday 30<sup>th</sup> November–Tuesday 22<sup>nd</sup> December - Available for Lunch and Dinner. Advanced Reservation recommended with only £10 deposit per person required to secure your booking! The menu is available at the Bar or on our Website.

**Christmas Day** We are open as usual for a lunchtime beer or two, but our popular Christmas Lunch is already fully booked!!!

**New Year** Welcome in the New Year with DJ Steve playing Soul, Disco and the 'Best of the Rest', including some banging New Year's Eve tunes! 8pm 'til Late. Everyone welcome – FREE ENTRY!!

[www.jollybrewersmilton.co.uk](http://www.jollybrewersmilton.co.uk)



**YOUR PROPERTY LOOKED AFTER AS IF IT WERE OUR OWN**

**LETTINGS  
LETTINGS  
& LETTINGS,**

Lettings and Property Management Specialists  
Over 30 Years Experience in the Cambridge Lettings Market  
24/7 contact

**IT'S ALL WE DO, 7 DAYS A WEEK**

Direct line to Jo Clark  
**07976 463 944**  
Direct line to Nicola Webb  
**07896 352 160**  
Office 01223 967277  
or 01954 214441  
[www.letsrentcambridge.co.uk](http://www.letsrentcambridge.co.uk)  
[info@letsrentcambridge.co.uk](mailto:info@letsrentcambridge.co.uk)



Lettings and Property Management Specialists



## Landbeach and Milton Baptist Church

All are welcome to our small but friendly fellowship. Further details from Maureen Clark, tel 01954 250118

## Sunday Services

10.30am  
6pm

Family Service  
Evening Worship  
(4th Sunday @ Girton)

### EMPLOYMENT OR FAMILY PROBLEMS?

- \*Settlement Agreements\*Unfair Dismissal\*
  - \*Discrimination\*Breach of Contract\*
  - \*Divorce\*Children Disputes\*
  - \*Financial Settlements\*Separation Agreements\*
- FREE INITIAL ADVICE**

**SMITH  
MAY**

**SOLICITORS LLP**

Barnwell House, Barnwell Drive,  
Cambridge CB5 8UU

**BRIDGET GILTINANE – Family Lawyer**

[bridget.giltinane@smslaw.co.uk](mailto:bridget.giltinane@smslaw.co.uk)

**JOANNE MAY – Employment Solicitor**

[joanne.may@smslaw.co.uk](mailto:joanne.may@smslaw.co.uk)

**CALL 01223 415372**

**FREE PARKING**

[www.smslaw.co.uk](http://www.smslaw.co.uk)

### Sunday services

**St. Paul's  
MILTON**  
Church at the heart of the community

### Midweek groups & events

#### 8am Holy

#### Communion

A quiet, reflective way to start the day.

#### 10.30am Morning Worship with Children's Groups

Designed to cater for the whole church, from ages 0-100+. Refreshments served.

**Evening Services**  
See website.

Little Rainbows Toddler Group, Parents & Under 1s, Lunch Club, Mothers' Union, Stitchers' Club, Reading Group ...

For full details of all these and more please visit:

[allsaintsmilton.org.uk](http://allsaintsmilton.org.uk)



## Wildlife Notes

Running an errand on my bike at the end of October, I saw a different kind of wildlife: lots of small children wearing scary clothes, looking for lit pumpkins. I've not seen a hedgehog for a week now at the feeding station. It seems early for them to be hibernating since it's been so mild. I'm not sure it's known whether it's day length or temperature, or a mix of both, that signals to them to shut themselves down in a safe place to see out the lean months. At least the ones that were visiting looked fairly fat. The bats I had regularly been seeing in various places also seemed to have disappeared. I noticed their absence a week or so before the clocks changed, while I was still able to cycle home at dusk and thus to see them, so I assume they are hibernating now as well.

The leaves have finally started to fall in large numbers and there have been some lovely colours. What I have really been noticing are the pyracanthas around the place. There is the most wonderful hedge on the Fen Road. One evening in September I came up the Fen Road to find two Chinese tourists taking photographs of it as they thought all the berries on it were so amazing! They explained to me they were really enjoying their rental cycles and exploring further afield than just the colleges and city centre, especially cycling along the river. I said I'd really appreciated the lovely white flowers coating this hedge in the spring too. What I will relish over the next month or so, until it's been stripped bare, is seeing all the blackbirds feasting on it. There are also some pyracanthas in Shirley Close right up against a wall by the road. As I cycle past every morning, I often frighten blackbirds who fly off in a right commotion. There, red and yellow-berried plants alternate. The blackbirds prefer the red as the yellow berries last much longer but are eaten eventually when winter really hits hard. A note that the Police recommend pyracantha hedges as a security measure as they are so prickly. Add to that the facts that they won't get blown over in a gale like a fence, hedgehogs can squeeze underneath them unlike a wall, and they provide food for the birds as well as a visual feast. Maybe we ought to have more in Milton?

*Heather Coleman*



**AG First Aid  
Training**

**Amelia Grant**  
First Aid Trainer Instructor

31 Old School Lane  
Milton, Cambridge

[ameliagrants@btinternet.com](mailto:ameliagrants@btinternet.com)  
<http://www.agfirstaidtraining.co.uk>  
07795680733

*Luxury  
therapies  
at affordable  
prices.*

**No27**  
THERAPY ROOM  
Tracy Wesson  
Holistic Therapist

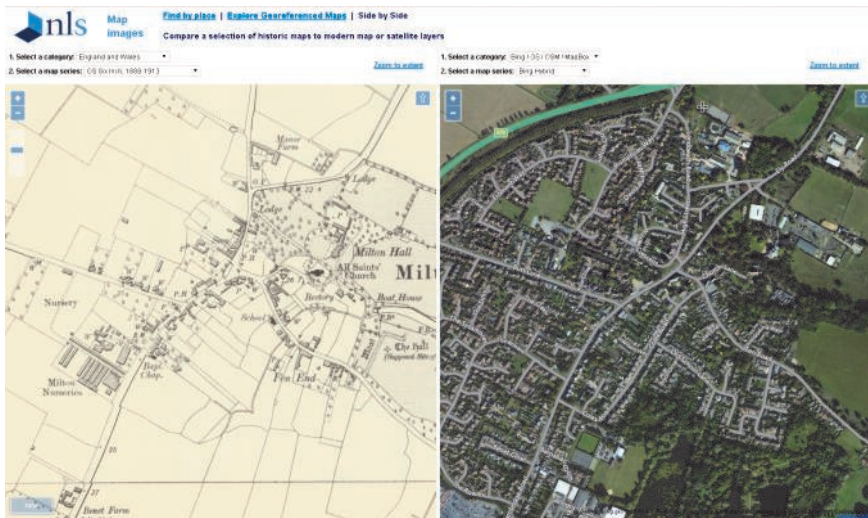
27 Fen Road · Milton · Call 01223 501534  
[WWW.NO27THERAPYROOM.CO.UK](http://WWW.NO27THERAPYROOM.CO.UK)



**20% OFF**  
all treatments  
on your first  
booking

# Historic Maps Of Milton

The village website has just updated *A History of Milton in Maps* ([www.milton.org.uk/history/opus616.html](http://www.milton.org.uk/history/opus616.html)) to add two new maps: a 6" to 1 mile map from the turn of the last century and a 1:25K map from just post World War 2. Both of these are based on screen shots of the excellent *National Library of Scotland side by side map archive* ([maps.nls.uk/geo/explore/sidebyside.cfm](http://maps.nls.uk/geo/explore/sidebyside.cfm)) which we recommend if you want to explore the history of anywhere in the UK using maps. This screen shot of Milton should give you an idea.



You can scroll around the maps by dragging or zooming either map and the other follows. Each map window can show data taken from OS maps from 1888 to 1961 and aerial photography from various sources. Do visit the site and have a look. We think you'll be fascinated.

Paul Oldham

## PHYSIOMOBILE

**Sarah Koets BSc MCSP MAACP**

Registered with the Health and Care Professions Council

- Back and neck pain
- Sports injuries
- Post operative rehabilitation
- Arm, hand and shoulder problems



- Hip, knee and ankle pain
- Repetitive strain injuries
- Postural problems

Self referral accepted Recognised by all major insurers

Milton Surgery, 87 Coles Road, Milton, Cambridge, CB24 6BL

**07790 512094** - [www.physiomobile.co.uk](http://www.physiomobile.co.uk)

Also at: Fen Ditton and Girton

## Milton Tennis Club

The past season has been another good one with regards to membership, tournaments and league results. Membership is around 140, which is similar to last season, and we would welcome players wanting to get back into tennis.

Tournament winners were:

- Dant Cup: Karen Momber & Greg Ryder
- Barham Cup: Carol Cox & Leigh Chapman
- Lock Cup: Ruth Davis & Bingfeng Mei

We have achieved some good successes in our LTA league matches this year and thanks go to Nick Hassett for running the Men's team, Barrie Crick for running the Mixed and Veterans teams and Ruth Davis for running the Ladies team. Nick also ran a Men's Business House league team, winning their league. We came top of the Mixed Doubles in division 9, second in the Men's in division 11 and third in the Ladies division 7. Thanks to all players and good luck for next year.

The new area built at the side of the courts has made it safer for players waiting to play and for stowing bags out of the way. It also accommodates our gazebo during tournaments!

Charles Harcourt and Samy Fennich again ran coaching sessions for adults and juniors; Samy also runs tennis summer camps for juniors and his junior coaching sessions on Friday afternoons run throughout the year.

All information about the club can be found on our webpage:

[www.miltontennisclub.co.uk](http://www.miltontennisclub.co.uk)

*Sue Griffin, Secretary MTC*

## Memorial Whist

A Memorial Christmas Whist Drive in memory of Pat Froment will be held at Milton Community Centre on Tuesday 15<sup>th</sup> December at 7pm.

£4 entrance, includes free raffle ticket. There will be seasonal refreshments

The November Whist Drive will be held on 24<sup>th</sup> Nov at 7pm. Whist drives will continue in 2016 on the 4th Tuesday of the month, at 7pm. Further details from R Daniels, tel 863425.

### **GJK Accountancy Limited**

**Accountancy services  
annual and monthly accounts  
bookkeeping  
VAT and tax returns  
Company formations**

griffith.kinsman@ntlworld.com  
30 The Rowans, Milton, CB24 6YU  
Mobile 07710 503 148

### **Dance, Movement, Storytelling and Musical Theatre for 4-6 years**

**Classes on Friday afternoons at Milton Primary**

3.30pm 4-6 years CM/Musical Theatre  
Come and dance to songs from the musicals this term!  
Pay as you go options available.

We also run workshops in the holidays and Children's Birthday Parties!

Tel. 07837844759  
michelle@creativemovements.co.uk  
www.creativemovements.co.uk  
www.facebook.com/cambridgecreativemovements



## Yoga at the Community Centre

Despite its ancient roots, this practice of strengthening and stretching the body to relax and restore the mind has become increasingly popular over the past decade. It offers many physical benefits, and in addition may help practitioners access an improved sense of well being.

Local Julie Davies (right) is hoping to engage more people in a spot of yoga on Friday mornings at the Community Centre. Julie, who lives in the village, recently qualified as a yoga teacher and is keen to reach members of the community who would like to start a yoga practice from scratch or to offer space to those who would like to practice with others on a Friday morning. Julie feels that there is a yoga for everyone whatever level of fitness or flexibility is presented. The new Friday morning offering complements the current evening classes offered at the Community Centre by Nadia at Ananda Bliss Yoga on Monday evenings and by Julie at StrongSuppleSound on Thursday evenings.



If you are interested and would like more information contact Julie directly at [www.strongsupplesound.com](http://www.strongsupplesound.com) or [strongsupplesound@gmail.com](mailto:strongsupplesound@gmail.com) or Nadia via [www.anandabliss.co.uk](http://www.anandabliss.co.uk)

*Julie Davies*

## Godden Auto Services Ltd

*Benet Garage, Cambridge Road, Milton, Cambridge, CB24 6AW*

**Servicing and repairs  
to all makes of vehicles**

**MOT TESTS WHILE YOU WAIT**

**By appointment only**

**[www.goddenautoservices.co.uk](http://www.goddenautoservices.co.uk)**

**All major credit cards accepted**

**Tel: 01223 420380**

**Opening times: Monday to Friday 8.30am—5.30pm, Saturday 8.30am—12.30pm**