



www.mvv.org.uk

Milton Village View

Issue No. 135 – Nov 2018



In This Issue...

- WW1 & 2: New Benches
- Scouting Update
- Christmas Events

And much more!

Photo: David May

Contact Us

Send us your news and photos:

mvv@milton.org.uk

Mary-Ann Johnson,
1 Knights Way, Milton, CB24 6DE

Deadlines for articles are:

12th January

12th March

12th May

1st September

1st November

Issues will be published approx.
3 weeks after the dates above.

Online Archive

Find back copies of Village View
(back to 1991) on our website:

www.mvv.org.uk

Printed by Langham Press Ltd.

**Delivered Free
Circulation 2,000**

Publisher's Notice

Whilst every effort is made to ensure accuracy the publisher accepts no responsibility for errors or omissions. Views and opinions expressed in the Village View are not necessarily those of the publisher or the editorial staff. The publisher does not accept any responsibility for claims made by advertisers.

Something for everyone at Milton Produce Show



We celebrated the tenth annual Milton Produce Show this year. The people of Milton (and further afield) once again impressed with a fantastic range of

home-grown produce, handicrafts, baking, preserves, photography and more.

In total we had 146 entries from 21 different people, but three names stood out: Jane Veress, who won the cup for handicrafts with her beautiful crocheted blanket and cushions; Jan Morrissey, who won cups for her flower arrangement, carved vegetable creation and delicious loganberry vodka, and Jonathan Western, who won in vegetables, fruit and baking, as well as taking home the coveted Cook Award!



Thanks go to the judges, the Country Park for hosting, and to everyone who entered. We'll be back next autumn so look out for notices nearer the time.

Ellie Crane



If you use our advertisers, please mention Village View. Thank you to our volunteer distributors.

November

Mon 26th Create for Christmas, All Saints', 7.30-9.30pm

December

Sun 2nd Christingle, All Saints', 4pm

Sun 2nd Advent Carols, All Saints', 6pm

Fri 7th Carols Under the Christmas Tree, Lion & Lamb, 7pm (p.18)

8th & 9th CamSAR Santa visit, 4-9pm (p.7)

Sat 15th Informal Christmas Afternoon, Landbeach & Milton Baptist Church, 2.30pm

Sun 16th Messy Christmas, All Saints', 3.30pm (see below)

Tues 18th EACH Carol Service, All Saints', 7pm (p.4)

Weds 19th Carols by Candlelight, All Saints', 7.45pm (see below)

Sat 22nd Pub Carols, Waggon & Horses @ 7pm, White Horse @ 8.30pm

24th/25th Christmas Services, All Saints' (see below)



January

Sun 6th Epiphany Carol Service with the Wren Choir, All Saints', 3.30pm (see below)

More pub events: see pp.18-19.

Regular events: www.milton.org.uk/clubs-societies

Christmas Services and Events at All Saints' Church, Milton

Messy Christmas

Sunday 16th December **3.30pm**

Messy Church with a Christmas theme

Carols by Candlelight

Wednesday 19th December **7.45pm**

*Traditional carols with choir,
followed by seasonal refreshments*

Crib Service

Christmas Eve **4.00pm**

A Christmas treat

not just for the little ones!

Midnight Holy Communion

Christmas Eve **11.30pm**

Christmas Day

8.00am Holy Communion

10.30am Christmas Celebration

*with Holy Communion
Something for everyone
on Christmas morning*

Epiphany Carol Service

Sunday 6th January 2019 **3.30pm**

*Our annual feast of Epiphany
carols and readings*



www.allsaintsmilton.org.uk



Waterbeach Theatre Company presents:

JACK AND THE BEANSTALK

24 - 26 January 2019

Evenings @ 7.30pm

Matinee on 26th @ 2.30pm

at Waterbeach School



EACH Carol Service

East Anglia's Children's Hospices (EACH) would be delighted if you could join us on the 18th December for our Christmas Carol Service at All Saints' Church, Milton.

The service will commence at 7pm and will be followed by mince pies, teas and coffee.

We are really looking forward to this year's event, which will include traditional songs, heartfelt readings and some wonderful performances that we know will be popular with our families, friends and supporters; so please feel free to invite your family and friends too.

The service will end with a retiring collection, raising vital funds to support the children and families we care for.

This is a great opportunity to say thank you to all of our supporters and to bring the local community together.

If you would like to attend, and for any questions, please contact the fundraising team on 01223 204916 or email cambs@each.org.uk.

PAINTING DECORATING GLAZING

Mobile
07860 453533
Phone:
01223 700800
(local resident)



B.J.LEONARD

Stephanie's MILTON'S UNISEX HAIRDRESSERS

Professional Hairstyling for Men and Women

Telephone: 01223 420526

Discount for all new clients

49 Cambridge Road, Milton, Cambridge, CB24 6AW

Christmas Greeting from the Rector

Dear friends, Why not include church in your celebrations this Christmas? Many people of all backgrounds from the Milton community join together at this special time to celebrate the story of the birth of Jesus. Even if it's the only time in the year that you come to church, you will be made very welcome.

There's a real variety of services to choose from this year at All Saints', from the traditional to the 'Messy'! I look forward to welcoming you. Wishing you a very happy Christmas and every blessing at this time of celebration.

Rev. David Chamberlin, Rector of Milton

It's a Wrap! Gift Wrapping Service

I've started up a little business of wrapping presents and as Christmas is fast approaching, I thought this would be a good time to let people know.

The cost is:

- * 50p per present (if you supply your own wrapping paper)
- * 80p per present (if I supply wrapping paper)
- * +20p per present for ribbons & bows

I can also wrap birthday presents, etc. For further information, please contact me via email: jayne508@hotmail.com

Or message me via Facebook at "It's a Wrap".

Jayne Hyde



Etheldreda Medal for Sue Nunn

On Sunday 7th October in Ely Cathedral, Sue Nunn of Coles Road was presented with the Etheldreda Medal by the Bishop of Ely. The medal, named for Etheldreda, the founder of the monastery at Ely that predates the Cathedral, is awarded to a small number of people each year for outstanding service to church and community. Sue's award is in recognition of many years of devoted service to All Saints' Church and the wider community of Milton, mainly through her involvement with the All Saints' Toddler Group and Baby Group, but latterly also with the Patient Participation Group and the Community Café. Congratulations to Sue!

GEOFF BUILD



ALL TYPES OF
BUILDING WORK
UNDERTAKEN – NO
JOB TOO SMALL

CARPENTRY A SPECIALITY – 35 YEARS EXPERIENCE

KITCHEN FITTING – SLABS/PATIOS LAID

CONTACT GEOFF ON 07488230-600 or EMAIL

geoffbuild17@gmail.com

J.P.Morley Roofing

Est. 1985



All types of roofing
Flat roof specialist

34 Fen Road, Milton

Home: 01223 863259

Mobile: 07941 198771

josephmorley@btinternet.com



Photo: Merel Pannebakker

Fen Road Resurfacing

After years of potholes, Fen Road has now been resurfaced as far as the level crossing, making a much smoother ride, particularly for all the cyclists who use Fen Road for their commute to work each day.

The original plan was for the resurfacing to continue all the way to the river. However, County Council Officers have explained that:

“The intention was indeed to resurface all of Fen Road – funded as part of GCP Greenways Quick Wins, but on the day the Network Rail supervisor would not allow the large roller over the rail crossing, despite working methods being previously agreed with them.

The plan is to return to complete this in mid-December.”

Jolly Brewers Closed

The Jolly Brewers is currently closed until further notice.

The kitchen closed on 21st October, and the pub has been listed for sale through Everard Cole Ltd.

The listing says that “The vendor will consider granting a new ‘free of tie’ lease (with an option to purchase).”

New Pizza Delivery Option

The Pizza Company is now delivering to Milton.

**THE
PIZZA
COMPANY**

They are offering a special 25% off for first-time orders from Milton when you call 01223 410800.

www.the-pizzacompany.co.uk



- Servicing, Installation and Repairs
- Gas Boilers, Fires, Cookers and Central Heating Systems
- Powerflush Cleansing of Central Heating Systems
- Energy Efficiency upgrades
- Landlord Gas Safety Checks and Certificates

Contact - Eddie Kikas
Your Local Gas Specialist

Tel/Fax: 01223 861810 Mobile: 07831 228181

Email: miltongas@btinternet.com
www.miltongas.co.uk

Pilates Classes

Milton, Landbeach & Cottenham

Mon 9.30am - Mixed Ability Mat Class (MCC)
Mon 10.30am - Mixed Ability Mat Class (MCC)
NEW CLASS TIMES FOR MILTON SCHOOL
Tues 6.30pm - Intermediate Mat Class (Sch)
Tues 7.30pm - Mixed Ability Mat Class (Sch)
Fri 9.05am - Mixed Ability Mat Class (CBC)
Fri 10.30am - Mixed Ability Mat Class (LVH)

Contact Liz 07768 155278
liz.dolman@lovepilates.co.uk
NVQ level 3 Pilates

**Love
Pilates**

Visit www.lovepilates.co.uk for further information

Santa visiting Milton!

Santa and his CamSAR helpers will have their pre-Christmas visit to Milton again this year, from 4-9pm on 8th and 9th December. You'll be able to see Santa's sleigh, with the lights and music (no sirens this year, to help little ones sleep).

CamSAR will publish route details closer to the time on the "Milton Community" Facebook page, and show Santa's progress there through both evenings.

A huge thank you to everyone in Milton for last year's support and generous donations.

Wayne Bent (CamSAR)



Playground Resurfacing

The new play area in Milton Country Park will not be accessible for the next few weeks while the new turf beds in. It should be open again around mid-December, depending on conditions.

This is important work that will ensure a much better playing surface in the long run and has been scheduled for a quieter period of the year to minimise disappointment.

Many thanks for your co-operation, MCP Team

Harmony

Hair and Beauty Salon

Expert hair stylists for Men, Women
and Children.

Beauty therapists offering a wide range
of treatments.

Chiropody (HCPC Registered). Sports therapy and massage
(See website for more details)

Gift vouchers available

6 High Street, Milton, Cambridge, CB24 6AJ



www.harmonysalon.co.uk

Call **01223 863636** to book an appointment

Open 9 - Late Mon - Fri

9 - 2pm Sat



Parish Council Chairman's Report

Mobile Vehicle Activated Sign (MVAS)



I'm pleased to say that during the time the MVAS speed sign was in position in Ely Road, most drivers were recorded as staying well within the speed limit with the average speed recorded as 25.43 mph. Only 3.4% were recorded as travelling over the speed limit. Sadly, there was one recording of someone travelling at 60mph.

The MVAS was purchased jointly by the Parish Councils of Milton, Waterbeach and Landbeach and a group of representatives of all three councils arrange when and where the sign will be located. They also put the sign in position. We are expecting the sign to be located in Cambridge Road in the near future.

Responsible Parking

In recent months, we have had a number of residents contact us asking us to try to get the County Council to install double yellow lines in areas where people park too close to junctions or are parking their cars irresponsibly. If there is a serious problem with parking, the police are able to act and we suggest you contact them direct. It is an offence to park within a certain distance of a

junction (usually 10m, with or without double yellow lines).

First World War Centenary



To commemorate the centenary of the end of WW1, we have arranged for three metal seats to be installed on the green areas by the War Memorial in Coles Road. These seats have scenes including a field of flowers with doves, the First World War and the Second



Matthew Harney Ltd

General Builder
Kitchens and Bathrooms
Carpentry
Fencing
Painting and Decorating



See my Facebook page for photos of recent work @matthewharneyltd

www.matthewharney.co.uk

Tel: 07962 398114

World War, and replace the existing three seats that had become uneconomic to repair. The new seats should be installed by the end of November. The cost of replacing these seats is coming from the Parish Council's Arts Budget of £50,000 which was handed over to the Parish Council by Bellway Homes as part of the planning agreement for North Lodge Park. This money can only be used for arts projects and a sub-group of the Parish Council are looking into other projects that can be funded by this money.



Old Photos of the Village on the Web

We have been uploading some old photos, including the Harrold Easy collection, onto the parish council website and are currently adding captions. We hope this part of the website will go live during late November. Please contact us if you have any additions

for the captions etc. The Millennium Book has also been scanned to a searchable document which we hope to upload soon.

Public Participation

If you wish to raise anything with the Council you can do this in several ways: by telephoning the Parish Office, by emailing or writing to the Clerk, by popping into the Parish Office and speaking to the Clerk or by attending and speaking at the beginning of one of our meetings.

Parish Councillors Needed

We are at present a council who should have 15 members, but for some years now we have struggled to attract enough people to join us. If you would like to get involved, please contact the Clerk as there are a number of vacancies and we would be very pleased to have more people join us.

I have now been Chairman for almost 5 years and plan not to seek re-election as Chairman but will remain a Parish Councillor.

Jane Coston

Chairman of Milton Parish Council

Parish Office: Tel. 01223 861447

Email: clerk@miltonvillage.org.uk

Website: www.miltonvillage.org.uk



*For all your Concrete
And Wooden Garden Products*

Paving, Edging, Ornaments, Bird Feeders, Planters, Trellis,
Nest Boxes, Pot Hangers, Picnic Benches and much more

**A limited range of Pot Plants
for your Garden, Planters, and Pot Hangers**

Tel: 01223 420669

www.phoenixtrust.org Unit 8, Milton Trading Estate

Supported work experience for people with learning difficulties

SILVER SERVICE TAXI

*Licensed Taxi Service,
Reliable, Local & Friendly*

Ian May

**07989 197816
01223 851158**

Serving Milton for 15 years

Email: silverservicetaxi@gmail.com

**Multi-Seater 1 to 8 passengers
Airport & Group Bookings welcome**

Special Needs & A Speciality

www.silverservicetaxi.co.uk



From the Archives

25 Years Ago: Dec '93

MILTON DOCTOR'S SURGERY

We are very pleased to welcome Dr Cain Hunt to Milton Surgery to join Dr Steward. Cain trained at Addenbrookes Hospital and did his GP training locally in Huntingdon. He is married with two small children, one born since joining the practice, and his wife is also a GP.

The surgery has increased in size recently, taking over the bottom half of the next door house which was previous Dr Drapers. [...]

We are in the process of introducing a computer, a new fax machine and several new telephone lines to improve our accessibility.



Dr C Hunt

10 Years Ago: Dec '08

New Milton Park & Ride is now Open



Milton Parish Councillor, Roger Day parks his bike at the new park & ride. The new site can be accessed from Milton via the A10 footbridge at the north west end of Butt Lane, Milton.

Is your Conservatory too Hot in Summer & too Cold in Winter?

Cooler in Summer

Warmer in Winter

Less rain noise

100% watertight

Choice of tiles or slates



CAMBRIDGE ROOFERS

NO HIDDEN COSTS

PUNCTUALITY

PROFESSIONALISM

COMMUNICATION

01223 782382

info@roofing-cambridge.co.uk
roofing-cambridge.co.uk



CAMBRIDGE ROOFERS LTD.
44 HERTFORD STREET, CAMBRIDGE, CB4 3AG



REGISTERED IN
ENGLAND & WALES
COMPANY NO. 09286628
VAT REG NO. 200035782

Community gritting volunteers needed

The Parish Council has put out a request for volunteers to help with the Community Gritting Team. Under this scheme, the parish council agrees specific routes in their area which are important to the local community and agrees them with the county council. Volunteers undertake training and grit the routes, including the Jane Coston bridge.

Please contact the Clerk of the Parish Council if you are interested, on:

clerk@miltonvillage.org.uk

Archaeological Clarification

The parish archaeological warden, Derek Booth, has written in with more background to "Scheduled Ancient Monuments" (MVV 134). In 2005, Mr. Booth found a large amount of pottery shards in the fields. He instigated further investigations with Oxford Archaeology East, Hills Road and The Perse from 2006-2008, giving the evidence needed for him to advise the Parish Council to apply for Scheduling for the site in 2017, thus preserving the Roman and mediaeval remains against potential development.

Missed Bin?

If you find that your bin has not been collected, you can report it on the SCDC website here:

tinyurl.com/missedbin

Strength and Balance: Stronger for Longer

A major new strength and balance campaign has launched in Cambridgeshire to help people stay stronger for longer.



Simple strength and balance exercises twice a week are proven to keep you independent and enjoying the great things in life, whether it's playing with grandchildren, shopping, socialising with friends or gardening.

For success stories and more information on classes and activities in your area visit:

www.cambridgeshire.gov.uk/strongerforlonger



Available for all occasions
Excellent discounts for charities

Contact: 07981 749614
amy.brookman@cantab.net

**AMBASSADOR LODGE
BED & BREAKFAST**

**37 HIGH STREET
MILTON
CB24 6DF**
(Next to the Waggon & Horses Pub)

**Friendly, family run B & B
Contact Phil or Fizz Turner**

01223 860168
www.ambassadorlodge.co.uk
ambassadorlodge@yahoo.co.uk



Brigita Saliklyte



Red kite, David May

Red Arrows over Milton,
Jenny Robertson

Rebecca Ostler



Autumn Festival, Anna Jarman



Tina Barker



Chris Thomas

Your Photos Could Be Here!

Photos taken in and around Milton always welcome — of places, people, events or just something that strikes you as beautiful. No lower or upper age limit!

Send them to mvv@milton.org.uk, and we'll include as many as we can.

Do you like music?

So does Katie.

why not help her enjoy it....



**Eddie's is looking
for volunteers for its
Befriending &
Family Support
Schemes.**

**It only takes a few
hours of your time
and it really does
change lives.**

Like to know more?

Call us on 01223 883141

or email volunteer@eddies.org.uk



Eddie's

LOCAL SUPPORT FOR PEOPLE WITH
LEARNING DISABILITIES

www.eddies.org.uk

Registered charity no. 1143944

Scan this code with
your QR reader to go
straight to our
volunteering page.



Milton WI

In October, we welcomed Helen Green who spoke to us on "From Home to the Western Front", a fitting talk on WWI army recruits and what happened to them through enlisting, kitting out, being put into platoons and fighting in the trenches. She had many photographs and information about the troops and their lives outside the harrowing fighting itself. We also had a Craft and Produce Sale of members' goods along with a display of other items made by our members for either charity or pleasure.

In November, we'll be looking forward to an evening with Sue Stephenson who will be bringing the "The Swinging 60s" back into our lives!

Lunches and Christmas festivities will follow along with our usual walks, afternoons playing board games, etc. January's meeting will be 'in house' with social time for chatting and discussing WI Resolutions.

New members are welcome. Contact our President Gill Offley (01223 293231) or Secretary Bridget Crow (01223 441755) for further details, or just come along. Meetings are on the third Tuesday of each month (except December meeting) at 7:30pm in the Church Hall.

Anne Newman

Milton Mothers' Union

In October, Mothers' Union made history in electing its first ever Worldwide President from outside the British Isles. Mothers' Union leaders from across the globe voted for Mrs Sheran Harper, from Guyana, to lead the movement's four million members in 84 countries. A new triennium begins in January and there will also be new leadership at both diocesan and local level. With the approach of Remembrance Day and the First World War centenary, we will be making poppies and sharing stories of how Mothers' Union responded to the war in our November meeting.

25th November is the International Day for the Elimination of Violence against Women. It is also the start of 16 days of activism against gender-based violence. Our members will attend a vigil at Ely cathedral during this period. We will collect toiletries for distribution in a local women's refuge and a hostel for vulnerable young women.

In December we will join the Wave of Prayer, praying for members with whom we have special links in overseas dioceses: Lusaka (Zambia); Shyogwe (Rwanda); Sokoto & Ikka (Nigeria) and Karimnagar (India). This will be followed by a Christmas meal shared together in the White Horse. A lovely end to a busy and productive year.

Jackie Metcalfe

C H LUMB

(BUILDERS)

DRAINAGE - GUTTERING

UPVC FACIAS & SOFFITS

PATIOS & FENCING

ALTERATIONS

01223 354402

Mobile 07762026290

**Looking to learn
or refresh your
French?**

French
à la carte

Exams, Business, Leisure...

Professional, qualified and friendly native speaker offers:

- Local tailored private tuition
- Group / family classes
- Conversation
- In-company options
- Exam preparation
- Help with all things French

All levels / ages absolutely welcome

Call or text me: 07792 974035

E-mail me: ameliefalc@gmail.com

Website: frenchalacarte.eu

Scouting In Milton



Beaver Scouts (6 to 8 years old) We've recently had lots of fun making smoothies, playing games and carving pumpkins! We've got lots more planned for this year but the highlight is our Christmas Play at the end of term so we've got lots of rehearsing to do until then!



Cub Scouts (8 to 10½ years old) We've recently cooked on open fires and fundraised for Jimmy's Night Shelter. This term we listened to the Cubs' ideas for the things they'd like to do on Fridays so there's plenty more fun activities coming too! We'll be going to an archery event, visiting the computer museum and getting the chance to make and eat ice cream!



Scouts (10½ to 14 years old) Having had an exciting time away on our Summer Camp experiencing karting, axe throwing and visiting an Aqua Park, there is plenty more that we have planned! We look forward to getting hands on with survival skills, archery and martial arts over the coming months.



Explorer Scouts (14 to 17 years old) Also known as The Milton Mud Muppets, each night is chosen and occasionally run by the Explorers themselves. Nights can vary from outings such as laser quest to outside games and fire lighting. We too have been to summer camp, where we enjoyed a week of cooking on open fires and trying out activities that we wouldn't get to do locally! We enjoyed going on some amazing hikes whilst putting skills that we've learnt throughout the year to the test!



Scouts

Are you interested in joining our team? Subject to the appropriate checks, there are many ways you can get involved in adult Scouting. from being in a uniform running activities to being behind the scenes on our fundraising and development groups! If you are interested, please email us at gsl@50thcambridgescouts.org or visit our website at www.50thcambridgescouts.org

ANDREW EVANS

01954 780 999 – 01223 864335

email: andrew@omegaclean.co.uk www.omegaclean.co.uk

Family Business Since 1980

- | | | |
|-------------------------|------------------------------|----------------------------|
| ✓ Carpet Cleaning | ✓ Leather Cleaning | ✓ Allergy Relief Treatment |
| ✓ Upholstery Cleaning | ✓ Oriental Rug Cleaning | ✓ Odour Eradication |
| ✓ Tile & Grout Cleaning | ✓ Carpet & Fabric Protection | ✓ Stain Removal |
| | | ✓ Carpet Fitting |



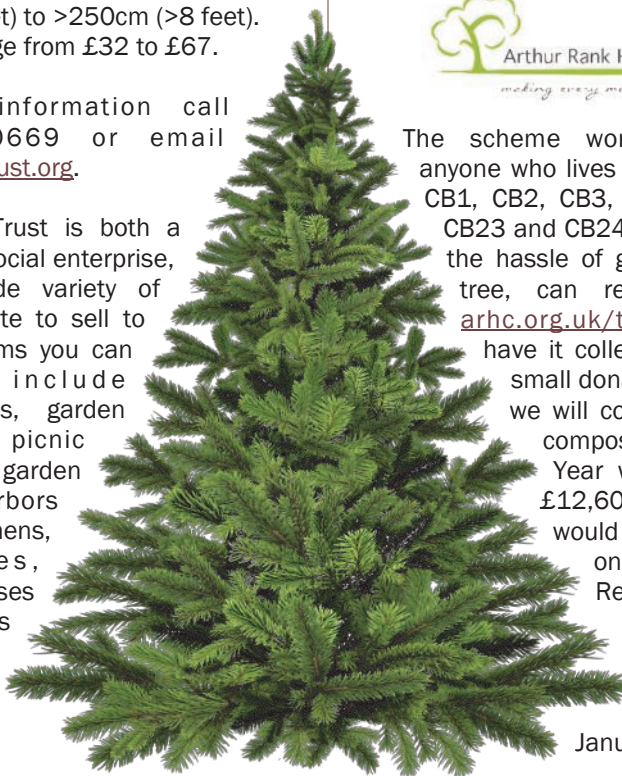
Christmas Trees To Buy...

The Phoenix Trust will be selling a range of Premier Field Cut Christmas Trees this year.

Trees range from
150cm (5 feet) to >250cm (>8 feet).
Prices range from £32 to £67.

For more information call
01223 420669 or email
info@phoenixtrust.org.

The Phoenix Trust is both a charity and a social enterprise, making a wide variety of products on site to sell to the public. Items you can purchase include concrete slabs, garden ornaments, picnic tables and garden benches, arbors and mud kitchens, bird boxes, planters, trellises in all shapes and sizes and bespoke items made to order.



...And Then Recycle!

The Christmas Tree Recycling Scheme at Arthur Rank Hospice Charity is back and bigger than ever!



Arthur Rank Hospice Charity

making every moment count

The scheme works very simply; anyone who lives in postcode areas CB1, CB2, CB3, CB4, CB5, CB22, CB23 and CB24 and doesn't want the hassle of getting rid of their tree, can register online at arhc.org.uk/treerecycling to have it collected by us. For a small donation to the charity we will collect your tree for composting. Last New Year we raised a huge £12,600 but this year we would love to improve on this even more! Register your tree by 1pm on 10th January 2019 for collection on 11th and 12th of January.

SUMMIT

SCAFFOLDING LTD

01223 350179

andy@summitscaffolding.co.uk



SCAFFOLDING
ASSOCIATION

smas*

www.summitscaffolding.co.uk

R.B. Electrical LTD

N.I.C. Registered

**Your Milton Domestic
& Industrial Specialists**
25 Yrs Experience

Tel. 365200

New Milton Colts FC Webmaster Required



Milton Colts Football Club, who are very active in the community across all age groups, are seeking a

volunteer webmaster to update the club's website with news and information on a regular basis. On average this will require no more than one hour per week and virtually nothing over school holidays or summer break.

Mentoring support will be given if needed. The site uses the well known software package WordPress for design and content management so the experience might be good for your CV.

If you have an interest in the internet, sport and/or journalism, that would be a bonus – but it's not necessary. Please email suzan.ziobro@btinternet.com if you are interested in helping our important social venture to thrive.

Suzan Ziobro

HOWARD'S WAY School of Motoring

Manual & Automatic Cars

- Male and Female Driving Instructors
- Pass Plus Courses
- Intensive Courses
- Instructor Training
- Theory & Hazard Perception Confidence / Refresher
- Patient and Friendly
- Top Grade 6
- Motorway Courses

HOWARD'S WAY WINDOWS

- Window Cleaning by Request
- Milton, Waterbeach, Landbeach
- Pubs, Clubs and Offices

T: 01223 440767 M: 07753 617310
E: howardcradock@gmail.com www.h2way.com

PHYSIOTHERAPY

Treatment for sports injuries, back and neck pain, joint problems etc.

Liz Cradock MCSP, MICT
Chartered Physiotherapist and
Reflexologist, HCPC registered

Recognised by major medical insurance companies

Treatments at:

'Wellbeing at 17', 17 High Street,
Waterbeach CB25 9JU

Tel: 01223 860928 Mob: 07714 052389
Email: liz.cradock.physio@gmail.com



Arthur Rank Hospice Charity

**make a
WILL month**

...throughout October 2018



Make a Will to make sure those you care about most are provided for

During October, participating solicitors are waiving their usual fee in exchange for a donation to Arthur Rank Hospice.

To find out how you can take advantage of this offer, visit arhc.org.uk/makeawill.asp or call **01223 675888**

Registered Charity No. 1133354

travel counsellors



With us...it's personal

MILTON VILLAGE TRAVEL AGENT MR ELI KARRAM

IATA and ATOL Member

I can book any holiday you may have seen elsewhere
Generally more choice and flexibility than available online
No limit on booking size Business travel UK and abroad
Everything financially protected, including flights only
30 years' experience No obligation quotations

01223 855290 or 07963 841 679 any time

eli.karram@travelcounsellors.com
www.travelcounsellors.co.uk/eli.karram

Winners: Customer Focus Award -
Lloyds Bank National Business Awards UK 2017

Lion and Lamb

Tel: 01223 860202

www.lion-lamb.co.uk

We are all really excited to see the wonderful Christmas Tree go up, signalling the build up to Christmas. Enjoy a delicious meal or catch up on the latest live sports with 3 screens showing SKY or BT. Our Christmas party menu is available from 3rd-23rd December – available to view online. Do call and book in advance. All December opening times and food service times can be found on our website.

1st December - LDC Christmas Dinner & Wine Tasting. Enjoy some sparkles on arrival then a selection of wines with your 4 course Christmas meal. Tickets must be purchased in advance - £45 per person, includes all tasting wines throughout the evening and dinner.

7th December – Carols under the Christmas Tree. Start the festive season with a sing-along with Milton Carollers, complimentary Mulled Wine & Cider and warm Mince Pies. We are also participating in Alzheimer's Society ELF DAY!, so come along in your best Elf costume and help raise funds for this fabulous cause.

14th December – 80's Christmas with Phil Watts.

21th December – Christmas DISCO and Party Night. Enjoy a boogie from 9pm til late.

24th December – Traditional Christmas Eve in the bar. Wear your best Christmas Jumper – come on down for Mulled Wine & Cider, warm Mince Pies and the tinkle of Santa's bells!

25th December – Merry Christmas! Sorry, but we are closed on Christmas Day

26th December Open from 12 on Boxing Day, meals available, booking recommended.

New Years Eve Party Time! – DJ Chris Light hosts the best NYE party, free entry and drinks “offers” running all night long to ring in 2019! If you are looking for something a bit more special, enjoy a 4 course meal with champagne and a flight of wines in the restaurant – advance booking required.

New Year's Day – Open from 12, serving brunch all day along with our full bar menu - booking highly recommended.

25th January – The Lonely Tone. Join us for a cracking night of live music with The Lonely accompanied by lead singer of the Indietones – Foxy! What a night – don't miss it!

Wishing you all a very merry Christmas and prosperous New Year.

Lawrence, Sally and the team at the Lion & Lamb

Jolly Brewers is CLOSED until Further Notice

All your re-upholstery needs
"COVERED"

S.PROCTOR
UPHOLSTERY LTD.

Antique & Modern
Domestic & Commercial

Foam Cut To Size
D.I.Y. Sales

Family Trade Since The 1940's

TEL: 01223 440430

Email: sproctorupholstery@gmail.com

C2 BUTTON END IND EST, HARSTON, CAMBRIDGE, CB22 7GX

GJK Accountancy Limited

Accountancy services
annual and monthly accounts
bookkeeping
VAT and tax returns
Company formations

griffith.kinsman@ntlworld.com
30 The Rowans, Milton, CB24 6YU
Mobile 07710 503 148

Waggon & Horses

Tel: 01223 570471

www.waggonandhorsesmilton.co.uk

A traditional village pub, open 7 days a week & serving food daily: Sunday–Thursday 09:30–17:30; Friday–Saturday 09:00–20:30. Breakfast is served everyday until midday, including fresh coffee & cakes. Lunch is served midday until 17:30. Our homemade pizza menu is available Friday-Monday, midday-20:30 & takeaways are available. We are now serving Sunday Roasts, every Sunday until 4pm.

We are now taking bookings for Christmas Parties. Please visit our website to see what we have to offer.

Do you have an upcoming event and need a venue or outside catering? We are happy to announce we now offer our services to cater for outdoor parties, from birthday parties to weddings. We have an outdoor bar available with a marquee that will allow your event to be private.

Now showing SKY SPORTS.

Tuesdays – Ale Tuesday £3 a pint between 16:00-20:00

Wednesday – 1st & 3rd Wednesday of the month is Quiz Night.

Thursday – Food truck Thursday 18:00-21:00

Upcoming events:

-  1st December – ‘So Eighties’ Christmas Fancy Dress Party from 7pm
-  31st December – New Years Eve Bash






George and the Waggon Team

White Horse

Tel: 01223 860327

www.facebook.com/whitehorsemilton

Our exciting Autumn line-up includes:

-  November 16th – Blues and Rock band Mola Mola
-  November 17th – Thai Night, 5:30pm (advance booking recommended)
-  December 7th – Karaoke
-  December 22nd – All Saints’ Choir will be Carol Singing with us from 8.30
-  December 31st – Karaoke and New Year’s Eve party

We have a varied menu and regular Chef’s Specials; for all meals you can phone us to book and notify us of any food allergies. We serve food 12-2:30pm & 5:30-8:30pm (Mon-Sat) and 12-8:30pm (Sunday). As well as the main dining area we have a separate room behind the fireplace for small and large parties. Why not come to us for your Office Christmas party? We are taking bookings now for Christmas meals, which will be available from 28th November until 22nd December; Christmas menus and booking forms are on our Facebook page and in the pub – you will need to pre-order your menu selection. All Christmas bookings will need a deposit of £10 per person.

We will be open on Christmas Day and Boxing Day for drinks only – from noon-2pm on Christmas Day and 11am-6pm on Boxing Day. On Christmas Day Alan and Ava will be here as usual to welcome you, and our bar managers (Gemma and Nikki) will be serving you in seasonal costume – an experience not to be missed! We will be open again as usual from 27th December, including New Year’s Day.

Why not give your brain a workout with Alan’s free-to-play Quiz Night (with free chips) every Thursday from 9pm.

Ava, Alan, Adam, Gemma, Nikki, Dan, Carl, Simon, Summer, Millie, Mollie and Fiona



Louise qualified as a dog groomer at the College of West Anglia and has been grooming at a local parlour for the last 4 years.

She has vast experience with most breeds of dogs.

Call today for an appointment on

01954 252869

67 Histon Road
Cottenham
Cambridge
CB24 8UF
www.wagglebumz.co.uk

Give your dog a treat and book today



Landbeach & Milton Baptist Church

All are welcome to our small but friendly fellowship.
Further details from
Maureen Clark,
tel 01954 250118

Sunday Services

10.30am Family Service
6pm Evening Worship
(4th Sunday @ Girton)

New Apostolic Church

High Street, Milton,
CB24 6AJ

Sunday Service @ 10.30am

All welcome

EMPLOYMENT OR FAMILY PROBLEMS?

*Settlement Agreements*Unfair Dismissal*
*Discrimination*Breach of Contract*
*Divorce*Children Disputes*
*Financial Settlements*Separation Agreements*
FREE INITIAL ADVICE

**SMITH
MAY
SOLICITORS LLP**

Barnwell House, Barnwell Drive,
Cambridge CB5 8UU

BRIDGET GILTINANE – Family Lawyer

bridget.giltinane@smslaw.co.uk

JOANNE MAY – Employment Solicitor

joanne.may@smslaw.co.uk

CALL 01223 415372

FREE PARKING

www.smslaw.co.uk

Sunday services

**St. Paul's
MILTON**
Church at the heart of the community

8am Holy Communion

A quiet, reflective way to start the day.

10.30am Morning Worship with Children's Groups

Caters for the whole church, ages 0-100+. Refreshments served.

6.30pm Evening Prayer

Said service with short reflection

Midweek groups & events

Little Rainbows Toddler Group, Parents & Under 1s, Lunch Club, Mothers' Union, Stitchers' Club, Reading Group ...

For full details of all these and more please visit:

allsaintsmilton.org.uk

Volunteers Needed By EACH

Finance Department Assistant

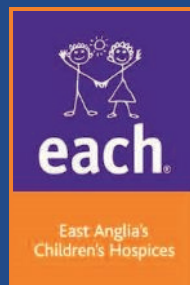
East Anglia's Children's Hospices (EACH) are looking for a friendly and enthusiastic volunteer to assist our Finance Department, based at our Head Office in Milton. Volunteers will be required to help count and log money donations kindly given to us by the public, assist with minor data inputting and general admin assistance within the office. We are looking for a volunteer who can help either one morning/afternoon per week but we can be incredibly flexible with times and the post is subject to an informal interview and two satisfactory references. If you have one hour to spare or two we would love to hear from you. Please contact Vicky Hughes on 01223 205183 or alternatively volunteerservices@each.org.uk

Milton Hospice Maintenance

East Anglia's Children's Hospices (EACH) are looking for volunteers with a keen 'fixer upper' attitude to assist our facilities team with the general day-to-day maintenance tasks at our hospice based in Milton. Roles include general DIY, routine equipment and compliancy checks, assisting with the setting up of equipment and supporting the facilities team with general repairs. Volunteers will be required to attend an informal interview, and positions are subject to an Enhanced DBS (Disclosure and Barring Service) and two satisfactory references. A minimum of one morning or afternoon per week is desired however we can be very flexible. Please contact Vicky Hughes on 01223 205183 or alternatively volunteerservices@each.org.uk

Christmas Collections

EACH are looking for festive volunteers to help at our Christmas collection on 21st December at Milton Tesco! The collection will run from 9am-5pm, accompanied by some music. We will need pairs of volunteers to cover 2-hour shifts and all you will need to do is smile with one of our buckets and watch the donations roll in! If you would like to take part or for further information please contact Ellen on 01223 204916 or email ellen.bing@each.org.uk



**AG First Aid
Training**

Amelia Grant
First Aid Trainer Instructor

31 Old School Lane
Milton, Cambridge
agfirstaidtraining@btinternet.com
<http://www.agfirstaidtraining.co.uk>
07795680733



**J Bowles
Electrical**

**RESIDENTIAL & COMMERCIAL
ELECTRICIAN BASED IN MILTON**

Call John on: 07725 351582

www.jbowleselectrical.co.uk
info@jbowleselectrical.co.uk

Wildlife Notes

I'll start with what feels to me a very worrying observation. Or rather, lack of observation. After saying in my last column how busy our hedgehog feeding station had been much of the summer, that activity has dropped off: I've not seen a hedgehog since mid-late August. A hedgehog enthusiast around the corner also reports a disappearance of hedgehogs and says a friend has also reported a total lack of hogs. Although natural food may have been abundant, I'm not sure they would totally shun easy meals so conclude there are no hedgehogs in my sector of Milton currently. I hope it's not that someone saw a rat, panicked, and has managed to wipe out much of the wildlife in the area. Rat poison is non-specific in its action and will kill any mammal or bird that is unfortunate to consume it, including family pets.

I've had a report from Milton wildlife enthusiast Derek Booth of a red kite along Butt Lane, near the entrance to the tip. I wish I'd seen it. (See *photo on p.12* —ed) He also reports seeing the blackest grey squirrel he's ever seen near the Community Centre.

Taking my car to the local garage is good for my wildlife observations if I can't cadge a lift home; it's a pleasant walk through the Country Park. My mid-September MOT produced more excellent sightings of kingfishers, both on Todd's and Dickerson's Pits. The great crested grebes seem to have had a decent breeding season, with the youngsters still being very noisy and hassling their parents for food.

I've had the odd sighting of kingfishers along the river, both below Baits Bite Lock and along the Long Reach. I feel it's too busy, both on the water and on the banks, for them to stay long so close to the city, but hopefully I'll continue to see one downriver. At the end of October there were three little grebes below Baits Bite Lock. (See photos.app.goo.gl/XTyiPeppoRMXAd527 for more wildlife photos from David May. —ed)

Although we've had a recent cold snap, I think it's been fairly mild so far. There are still plenty of berries on both the hawthorns and the lovely pyracantha hedges in the village, but I am spotting an increasing number of birds near them, so I'm sure they will be bare soon.

Heather Coleman

Est. 2002

THE CLEANING SERVICE

BELLE CASA

~ Beautiful Homes ~



A professional cleaning, washing and ironing service for a fully inclusive rate at only £12.50 per hour*

Housekeepers specially selected & insured
The same housekeeper each week

01223 441055

www.cleanerscambridge.com

*£12.00 for 5 or more hours

Milton Tennis Club

Milton Tennis Club have enjoyed another good year, culminating in our very well-attended end-of-season dinner at the beginning of October. The 2018 winners from our 'in-house' tournaments were:

- Dant Cup: Angela Crick/Karen Momber and Barrie Crick
- Barham Cup: Rosie Eggo and John Whitehouse
- Nick Lock Cup: Angela Crick/Karen Momber and John Whitehouse

LTA League results: Ladies 5th in Division 6, Men's 6th in Division 9, Mixed 2nd in Division 8.
Business House League: 2nd in the Men's matches

A Mixed team was entered in the Super Seniors matches for the first time. All players are aged 60 and over and matches consisting of 3 sets are played during the day. These were very enjoyable, social occasions, although Milton only won one out of five matches. We aim to improve next year!

Tennis continues throughout the winter with club nights on Wednesdays and the LTA winter league. If you are a lapsed tennis player and want to get back into the game, come along and meet us on a Wednesday evening, or contact one of the committee. We have two great coaches in Samy Fennich and Greg Ryder. Samy holds coaching sessions for juniors after school on Fridays and he runs holiday camps. Greg's pre-match coaching sessions are invaluable and he also holds general coaching sessions during the summer.

All information on our website: www.miltontennisclub.co.uk

Sue Griffin, MTC Secretary

Healthy 4 Life: 50+ Exercise Group

FIRST SESSION FREE! Come and join this sociable class for men and women, held in Waterbeach Barracks/Museum on Fridays noon-1pm. Several regulars from Milton and surrounding villages have already joined.

This class is a mixture of seated and standing exercises to improve mobility and balance and help with arthritis, back pain, joint replacement and other age-related medical conditions.

For more information, phone Vanessa on 07751 599826.

Wendy Roberts, wroberts6@live.co.uk



Summit Landscapes
PAVING CARPENTRY
DRIVEWAYS GROUNDWORK
BRICKWORK

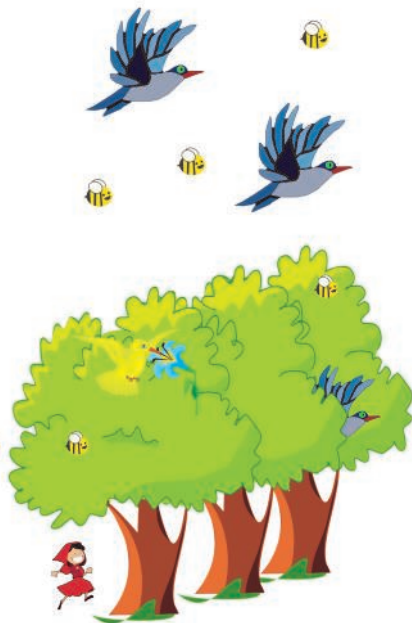
www.landscapingpaving.co.uk
01223 - 929394



Summer

When I think of summer,
I think of the birds and bees.
When I think of summer,
I think of the big green trees.
When I think of summer,
I think of the birds that fly.
When I think of summer,
I believe nothing can die.
When I am in summer,
The sun is burning on my head,
And oh no the grass is dead.
When I think of summer,
Everything is ok.
But here comes winter coming to
take my summer away!

Kirsty Thorne aged 9



Godden Auto Services Ltd

Benet Garage, Cambridge Road, Milton, Cambridge, CB24 6AW

**Servicing and repairs
to all makes of vehicles**

MOT TESTS WHILE YOU WAIT

By appointment only

www.goddenautoservices.co.uk

All major credit cards accepted

Tel: 01223 420380

Opening times: Monday to Friday 8.30am—5.30pm, Closed Sat/Sun