



www.milton.org.uk/mvv

Milton Village View

Issue No. 114 – Sept 2014

In This Issue...

- 'What's On' pull-out
- Welcome Tea
- Autumn Festival
- Flu Vaccinations
- New Year's Disco

And much more!



Zorbing at the Summer Fayre, by Sally Milligan

SILVER SERVICE TAXI

Licensed Taxi Service, Reliable, Local & Friendly

Ian May

Mobile 07989 197816

Tel: 01223 512609

email: silverservicetaxi@gmail.com

Multi-Seater 1 to 8 passengers
Airport & Group Bookings welcome
Specials Needs & A Speciality

www.silverservicetaxi.co.uk



Celebrating over 10 years Supplying Taxi Services in Milton

Contact Us

Send us your news and photos:

vv@miltonvillage.org.uk

1 Knights Way, Milton, CB24 6DE

Deadlines for articles are:

12th January

12th March

12th May

1st September

1st November

Issues will be published approx.
2 weeks after the dates above.

Online Archive

Find back copies of Village View
(back to April 2011) on our website:

milton.org.uk/mvv

Printed by Langham Press Ltd.

**Delivered Free
Circulation 1,850**

Publisher's Notice

Whilst every effort is made to ensure accuracy the publisher accepts no responsibility for errors or omissions. Views and opinions expressed in the Village View are not necessarily those of the publisher or the editorial staff. The publisher does not accept any responsibility for claims made by advertisers.



All villagers are invited to drinks and refreshments at

THE ANNUAL GENERAL MEETING OF MILTON COMMUNITY CENTRE

to see how this charity is managed and how it plays a large part in the village of Milton

TO BE HELD IN THE LOUNGE,
7.00PM ON TUESDAY 14TH OCTOBER

The AGM will start at 7.30pm.

Alpha @ All Saints'



Alpha is a series of interactive sessions that freely explore the basics of the Christian faith. No pressure. No follow up. No charge. Alpha has around ten sessions and includes food, a short talk, and a discussion at the end where you can share your thoughts.

All Saints will be running Alpha in the Autumn in Milton. To find out more about Alpha visit alpha.org.

If you think you'd like to give Alpha a try, please contact All Saints Church Office 01223 441007 or office@allsaintsmilton.org.uk.

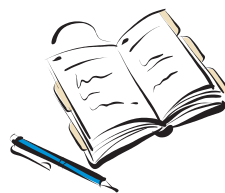


If you use our advertisers, please mention Village View. Thank you to our volunteer distributors.

September

Sun 21st Autumn Festival, including **Produce Show** and **Dog Show**, Milton Country Park (p.6)

Fri 26th **Macmillan Coffee Morning**, Lion & Lamb, 9-11am (p.4)



October

Sun 5th **Welcome Tea** for new residents of Milton, All Saints' Church Hall, 3-5pm

Tues 14th **Community Centre AGM & Drinks**, lounge, 7pm (p.2)

Tues 14th **Cygnets Pre-School AGM**, community centre, 8pm

Sun 19th **Messy Church**, crafty, creative, messy church for all ages, 3.30-5.30pm

Tues 21st **All Saints Reading Group**, 'Edith Cavell' by Diana Souhami, 7.30pm

Sat 25th 'Contagion in Cambridge' Zombie Evacuation Race, Country Park



November

Sun 2nd **Service of Remembering**, All Saints', 3pm

Sun 9th **Remembrance Day**, All Saints' and Coles Rd War Memorial, from 10.30am

Tues 11th **Act of Remembrance**, Coles Rd War Memorial, 11am

Sat 15th **MU Quiz Night**, free entry, All Saints' Church Hall, 7.30pm (p.7)

Sat 22nd **All Saints Nite Live**, with 'The Midas Collection' and 'The Seven Twenty'

See pp.22-23 for more events at the pubs.

See www.milton.org.uk/diary.html for more event details.

See www.miltoncountrypark.org for more park event details.

Family New Year's Eve Disco

Are you wondering what your family will do to celebrate New Year's Eve this year? Then wonder no more! The Family New Year's Eve Disco (and Party Games!) returns to Milton Community Centre.

This is a family-orientated event organised by the Milton Fayre not-for-profit charity staffed by volunteers. Tickets are the cheapest you'll find anywhere and a buffet food snack is included in the price.

It will be a fun-filled night with Disco, Kids' party games, Adults' Bar with alcohol and soft drinks, Adults' Super Card Bingo with cash prizes, Buffet snack break at 9pm for all ... and Midnight Balloon Drop and Pop (for kids and 'big kids' alike!).

After a break of more than five years we expect tickets to sell-out very quickly for this unique event - get yours here: www.miltonfayre.uk/newyear ... but don't leave it too late - tickets are very limited.

Hue Holleran

Macmillan Coffee Morning



This year Milton will have its very own Macmillan Coffee Morning (in support of Macmillan Cancer Support charity). You may have seen posters up all around the village!

26th September 2014

9-11 am

Lion and Lamb Pub (High Street)

Please pop in for a cup of tea or coffee and a piece of cake and give what you can for this fantastic charity!

There will be a raffle/tombola and we have also asked some local businesses to exhibit their products. We would like to say a big thank you to Sally and her staff at the Lion and Lamb for giving up their time providing the venue and all the tea and coffee!

Birgit, Shan, Karen and Sarah

New Summer Fayre Committee

Milton Summer Fayre will take place in July 2015 and a new organising committee has already started the planning! Can you help the Fayre? Please 'like' us at www.miltonfayre.uk/like - we still need your support.

The new organising committee members are: Adam Footman, Ange Mason-Bell, Barry Turner, Dean Snow, Fie MacDonald, Hue Holleran, Jeannie Austin, Judi Turner, Liz Austin, Rachel Bell and Steve Austin — and Charlotte Holleran and Ellen Footman (the 'Teens Team') will organise much-needed specific facilities for teenagers.

Hue Holleran

**PAINTING
DECORATING
GLAZING**

**Mobile
07860 453533
Phone:
01223 700800
(local resident)**

B.J. LEONARD

Stephanie's
MILTON'S UNISEX HAIRDRESSERS

Professional Hairstyling for Men and Women

Telephone: 01223 420526

Discount for all new clients

49 Cambridge Road, Milton, Cambridge, CB24 6AW

Milton Summer Fayre 2014



Photo: Duncan Winterborn

The Milton Summer Fayre outgoing committee would like to say a big "Thank You" to everyone that came along to this year's fayre, and to all the stall holders, entertainers, fantastic bands, Colin Nunn, Richard Twinn for their help in sorting out the electrics, and of course Barry Woodman for keeping the fayre up to date with his announcements throughout the day.

Also, thank you to everyone for helping us raise a thousand pounds for EACH Hospice this year.

We have enjoyed our time on the summer fayre committee, and we are really pleased that a new committee has come forward to take over this great village event. We will give them all our support and wish them well.

Thank you!

Lynda Molloy, Vivian Hill,
Jackie Tolliday, Rebecca
Aldhouse, Micky Hagger,
Diane Hodgson,
Steve Aldhouse



Photo: Duncan Winterborn



M.J Potts

**HEATING & PLUMBING
SERVICES LTD**

- GAS SAFE REGISTERED
- Boiler Installation - Gas & Oil
- Complete Bathroom Design and Installation
- Landlords Certificates
- Power Flush
- Tiling
- Under Floor Heating
- Gas Boiler Servicing
- Free Estimates

* Covering Cambridge for 30 years *

Ph: 01223 242544

Email: malcolm.potts@btconnect.com
Unit 8, Ronald Ralph Court, Wadlows Road,
Cambridge, CB5 8PX



2163

J.P.Morley Roofing

Est. 1985



**All types of roofing
Flat roof specialist**

1 Old School Lane, Milton

Home: 01223 863259

Mobile: 07941 198771

josephmorley@btinternet.com

Autumn Festival, Produce Show & Dog Show!

On Sunday 21st September from 11am to 4pm, Milton Country Park will be hosting its first annual Autumn Festival. They will be welcoming in the new season with a celebration of local food, craft and family fun.

You will be able to enjoy beer supplied by Milton Brewery, sample food from some of our most popular independent street food stalls provided by the popular Cambridge foodPark collective and others, shop for handmade gifts in the craft tent and take part in fun family activities such as outdoor cooking, pond dipping and more!

Why not enter the produce show and show off your own handmade or home grown delights, or even bring along your perfect pooch and enter them in the dog show? The park will even be pressing juice from their own apples. If you bring along your own apples and a bottle they can juice yours too!

With all the stalls being local and independent, and an emphasis on good old-fashioned family fun, the Autumn Festival is the perfect opportunity to come together and celebrate the wealth of products and ingredients we have right here on our doorstep.



Paul Oldham



- Servicing, Installation and Repairs
- Gas Boilers, Fires, Cookers and Central Heating Systems
- Powerflush Cleansing of Central Heating Systems
- Energy Efficiency upgrades
- Landlord Gas Safety Checks and Certificates

Contact - Eddie Kikas
Your Local Gas Specialist

Tel/Fax: 01223 861810 Mobile: 07831 228181

Email: miltongas@btinternet.com
www.miltongas.co.uk

51 Bourneys Manor Close, Willingham, Cambridge, CB24 5GX



Pilates Classes Milton & Landbeach

Mon 9.30am - Mixed Ability Mat Class (MCC)
Mon 10.30am - Mixed Ability Mat Class (MCC)
Tues 6.20pm - Intermediate Mat Class (Sch)
Tues 8.15pm - Mixed Ability Mat Class (Sch)
Fri 10.30am - Mixed Ability Mat Class (LVH)

Contact Liz on 07768 155278
or liz.dolman@lovepilates.co.uk
NVQ level 3 Pilates & PureStretch Instructor
For further info, visit www.lovepilates.co.uk

MU Summer Tea Party & Autumn Programme



A big thank you to everyone who came and supported our summer tea party. The torrential rain stopped, the sun shone and scrumptious cakes and good conversation were shared by all. Furthermore, we were delighted that over £270 was raised for the Mothers' Union 'Away From It All' holiday scheme. This is a most worthwhile national MU project that provides holidays for families and others in particular need who in normal circumstances would not be able to afford the cost of a commercial holiday.

As the year draws to an end we look forward to running a full and varied programme. In October we are using a new location and holding a meeting at Barnabas Court. Barbara Midgely, a former midwife and a diocesan MU member from St. Ives, will be speaking about her experiences as a midwife whilst working in the east end of London in the post-war years.



On November 4th we welcome Lynda Baxter from the new charity High Hopes For Children. One exciting aspect about this charity is the use made of appropriate paper technology to provide essential equipment for children with cerebral palsy or other physical disabilities. Another event that cannot be missed is our Quiz Night on Saturday 15 November. Last year's quiz proved to be a fun filled evening and definitely one to repeat. Our quiz master Gerry Metcalfe is already hard at work planning the brain teasers for this year. Do come along and join us. For more information about the quiz and the meetings listed below please contact Jackie Metcalfe on 564361 or email jacques0701@gmail.com.

Jackie Metcalfe



**For all your Concrete
And Wooden Garden Products**

Paving, Edging, Ornaments, Bird Feeders, Planters, Trellis,
Nest Boxes, Pot Hangers, Picnic Benches and much more

**A limited range of Pot Plants
for your Garden, Planters, and Pot Hangers**

Tel: 01223 420669

www.phoenixtrust.org Unit 8, Milton Trading Estate

Supported work experience for people with learning difficulties

Harmony

Hair and Beauty Salon



www.harmonysalon.co.uk

*Expert hair stylists for Men, Women and Children
Beauty therapists offering a range of treatments*

Telephone **01223 863636** to book an appointment

6 High Street, Milton, Cambridge, CB24 6AJ

Open 9-6pm Monday - Friday
9-2pm Saturday



Postino Coffee



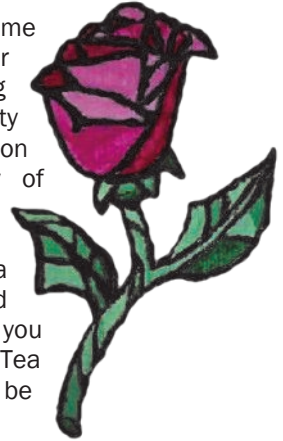
We at Postino Coffee would like to thank all of Milton for getting behind us in supporting Milton's newest coffee bar, at the Post Office on Coles Road. We are now fully functioning offering fresh sandwiches, paninis and breakfast muffins and a range of cakes, tray bakes and oven baked pastries – as well as our amazing massimo blend of Segafredo espresso for all your coffee needs.

Neil Rogers

Cambridge Amateur Artists and Craftists*

We are a group of amateur artists who dabble in painting, sculpting, drawing, knitting, mosaic-making, sewing, photography, leatherwork and a whole lot of other things.

Everyone is welcome regardless of skill or ability. Come along to Milton Community Centre to meet us on the last Thursday of each month. Bring your materials if you'd like to have a play – but no need to bring anything if you just fancy a chat. Tea and biscuits will be provided.



Join us on www.meetup.com/Cambridge-Amateur-Artists-and-Craftists for more details.

Marie Georgiou

**Admit it. It's catchier than Artists and Crafters.*



ZUMBA
fitness

Dance Fitness Class

Zumba Classes in Milton 2014

Licensed Zumba Instructor Liz Dolman

Milton Primary School

Tuesday Nights 7.15pm

All Abilities Welcome

Weekly £6 or 5 Session Card Available

For further information

contact Liz on 07768 155278

or liz.dolman@love2zumba.biz

Visit www.lovepilates.co.uk/zumba

AMBASSADOR LODGE BED & BREAKFAST

37 High Street, Milton, CB24 6DF
(next to the Waggon & Horses pub)

Friendly, family-run B&B

Contact: Phil or Fizz Turner
Tel: 01223 860168

www.ambassadorlodge.co.uk
e-mail: ambassadorlodge@yahoo.co.uk

Thank you!

A BIG THANK YOU to everyone who donated to and supported our stall at the Summer Fayre in aid of Breakthrough in Breast Cancer. We are very happy to let you know we raised £360 for this very worthwhile charity!

Thank you - Alice & Karen

Disability Funding Changes

The Independent Living Fund (ILF) aims to support long term, independent living for severely disabled people by helping them to live at home instead of in residential care. In March 2014, the Government announced that it will be closing on 30th June 2015 when the County Council will take over responsibility for meeting the eligible care and support needs of ILF users.

The County Council and ILF are working closely together to make sure the transfer of responsibility for funding arrangements takes place as smoothly as possible.

The ILF website www.dwp.gov.uk/ilf includes more information about the programme's closure, or you can phone the County Council's Customer Services on 0345 045 5202 with any questions. The ILF is no longer accepting any new applications.

Golf Course & Waggon Latest

You may have noticed that the village golf course has sadly gone into administration.

The landlord and landlady of the Waggon & Horses have also moved on to pastures new, but here the news is better however, as it is currently being refurbished, with a view to re-opening at the beginning of October, running as an Italian restaurant.

Paul Oldham

P&R Parking Charges

As you will know all Cambridge Park & Ride sites, including the one at Milton, now charge for parking. The system Cambridgeshire County Council have installed is an automatic number plate recognition system. This logs the vehicle number plate on the way into the site and on the way out. The first hour is free. If you require more time then the charge is £1 for up to 18 hours parking. Higher charges apply beyond 18 hours.

Tickets are available from the ticket machines next to the building and the passenger can purchase a number of different tickets from these machines depending on their requirements.

There is an option for parking only, for concessionary passholders who still (for now) get free travel on the bus. There is also a button for a park and ride ticket, which the majority of users will press, as this will give them a parking ticket and a ticket for travel in one transaction. Then there is a ride ticket only, for those who have not parked a vehicle in the site and just wish to travel on the bus, which will apply to many people from Milton who walk or cycle to the site.

Customers wishing to pre-pay for parking can do so online on:

www.cambridgeparkandride.com

Enforcement will be via a parking enforcement officer placing an enforcement notice on the vehicle in the car park. No tickets will ever be issued by post. The enforcement will be £50 (reduced to £25 if paid within 2 weeks) or £70 if parked in a disabled bay without Blue badge (reduced to £35 if paid within 2 weeks).

Paul Oldham

All Saints - Pizza Factory Holiday Club



For two days in the summer holidays All Saints Church was transformed into an amazing pizza factory with its own pizza factory oven! Bookings rolled in almost as quickly as the pizzas disappeared, and 73 children turned into master chefs as they created their lunch each day.

The amazing team of teenagers and adults had so much fun together with the children. The Pizza

Factory hosted some very special guests:

Professor Topping: 'That's Rev Chamberlin' whispered a little boy... as Prof Topping, a man of few words, brought them his own unique creations to taste through the day. Then we met the scatty but oh so sweet 'Truly Flavoursome' (our new children's worker!), who educated us all with her 'Amazing Facts'! Then there was the cute and loveable 'Captain Ketchup-ini - Bikini'. Despite his fake Italian accent and poor jokes he delighted the children.

'Did the children enjoy it?' 'Yes'. 'Were the team exhausted by the end?' 'Absolutely!'

'Will we do it again?' 'Of course!'

Julia Chamberlin



C H LUMB

(BUILDERS)

DRAINAGE - GUTTERING
UPVC FACIAS & SOFFITS
PATIOS & FENCING
ALTERATIONS

01223 354402

Mobile 07762026290

Michaela Overton

F.CInst.L.Ex

- ♦ **Wills,**
- ♦ **Probate Assistance**
- ♦ **Lasting Powers of Attorney**

Tel. 07810 140967

Free home visits

Reporting of Smells

There have been intermittent smells reported in the village. Village efforts have already resulted in a number of improvements to a potential source, however smells are still being reported.

If you are affected, please report odours promptly and objectively to the Environment Agency 0800 80 70 60 as well as on the Village Log, instructions found here:

www.milton.org.uk/pong.html

When reporting to the Environment Agency, feedback can be requested on what actions are being taken. It is important that every occurrence is reported and logged so that the Environment Agency can continue to take action to help resolve the situation for those affected.

Curry Pizza is Back!

Takeaway fans in Milton may have spotted that "Curry and Rice" on the High Street has changed its name to "Curry and Pizza", as it's added pizza (including "curry pizza") to its menu, along with burgers and southern fried chicken.

Mary-Ann Johnson

Assistant Parish Clerk Vacancy, Parish Council

Starting Salary: £8.43-£10.30 per hour, dependant on experience (£16,215-£19,817 p.a. FTE).

The Parish Council of 15 Councillors is friendly, dynamic and forward thinking. There is a Parish Council office in the village and the council has achieved Quality Status.

We are looking for someone who is friendly and enjoys working with the public. The post holder will require a high level of IT competence, be organised, efficient and flexible.

Hours will normally be approx. 40 per month. These will be worked in accordance with the demands of the job and will include some evening work and may include weekend work.

Full details and an information pack are available from:

Gemma Faulkner, Parish Clerk, Parish Council Office, Coles Road, tel: 861447 or email: clerk@miltonvillage.org.uk

Closing date for applications: 13 October 2014

If You Live Near Milton, Fixing Your Car Doesn't Have To Be Expensive!

We've a reputation for treating our customers as if they're family.....so you get top quality, friendly service at some of the best prices in town. But don't just take our word for it, see our customer reviews at:

www.cambridgeonline.com or cr-autoservices.co.uk

Tel: 01223 423982

Unit 2, Cambridge Rd Ind Estate (nr. Milton Country Park), Milton, CB24 6AZ



**TYRES & SERVICING
At Probably The
Best Prices In
Cambridge**

Approved fitting centre for blackcircles.com

Lots of FREE Stuff

- FREE Vehicle Health Check
- FREE Antifreeze check
- FREE pre-MoT check
- FREE Brake Fluid check
- FREE Battery check

**M.O.T's at
the best price in
Cambridge!**

**From only
£27***

* not available to trade

Chimney Safety Tips

Winter is coming and after seeing a rise in chimney fires last year, Cambridgeshire Fire and Rescue Service is encouraging all residents to get their chimney professionally swept before the cold sets in. Top tips to enjoy an open fire safely:

- ◆ Sweep your chimney at least once a year and get brickwork inspected, especially the chimney breast and roof space.
- ◆ Do not bank fires too high and let them burn down well and check the hearth before going to bed.
- ◆ Use a fire or spark guard.
- ◆ Do not place objects on the mantelpiece causing you to stand too close to the fire to reach them.
- ◆ Burn only suitable fuels and avoid burning resinous woods as soot builds up quickly.

Ensure you have a working smoke alarm fitted on each floor of your home. To find out if you are eligible for a free home fire safety check, call 0800 917 9994.

'Like' our fan page at www.facebook.com/cambsfrs and follow us on Twitter @cambsfrs.

Crafts & Coffee

Originally started as a flower arranging club, we meet up on a Tuesday morning 10-11.30am at the Milton Community Centre.

We are opening the doors to new members who wish to bring their own craft, or if you just want to come for the company and coffee. Meetings start again on October 7th. Cost will be under £3 each week, just to cover the cost of the hall and refreshments. We look forward to meeting you.

Shirley Proctor

Volunteers Needed

Cambs. College Riding For The Disabled (RDA) is looking for volunteers to join their group based at Milton College. If you would like to help young people fulfil their dreams and learn to ride and are free on Thursday afternoons between 4-6pm, then please call Lulu Boscawen on 01954 789 628 for further details.



Comberton Ramblers Celebrating 40 Years

Comberton Ramblers is a local walking group whose first walk was on the 30th June 1974 from Toft to Caldecote. 10 members attended the walk. Today membership has grown to 48 members from various local villages. We are a friendly group walking on alternative Sundays and covering Cambridgeshire, Hertfordshire, Suffolk and Essex. After a walk of around 4-6 miles, we are often found socialising in a warm local pub.

We all enjoy walking in this beautiful area which is blessed with a variety of countryside from woodlands, rivers and the fens. We often spot wildlife such as deer, birds of prey, butterflies and wild flowers. Regular walking can strengthen your heart, bones and muscles and can reduce the risk of coronary heart disease, stroke, diabetes, osteoporosis and arthritis. Walking also improves your mood, confidence and stamina.

For further details on how to join our sociable rambling group please see our website www.combertonramblers.org.uk or contact Stella at stella.ramblers@hotmail.com

Adult Support

Need information and advice?

Are you:

- ◆ Living with a long-term illness or disability?
- ◆ Providing unpaid support to adult family members or friends who could not manage without your help?
- ◆ Struggling with an age-related condition?

If you answer 'yes' to any of these then why not come along to one of our Adult Support Drop-Ins at Cambridge Central Library, Lion Yard, Cambridge CB2 3QD. 10am – 12noon. The next drop-in is October 29th and there will be advice about healthy snacks.

Our advice is free and confidential and a warm welcome is guaranteed. For further information call Leigh Hornsby on 01480 373220 or mail CarersSupportTeam@cambridgeshire.gov.uk

Community Navigators

Commissioned in 2013, the Community Navigators project is a county-wide initiative that aims to help older people access services and groups to improve their quality of life. This can include directing someone to a local coffee morning or making them aware of what financial support they are entitled to.

Milton is well served by a fantastic team at the surgery and a very diligent community warden: the idea is to complement them and reach more people in need. Community Navigators provide information and a friendly point of contact, and you are welcome to commit as much or as little time as you wish. Full training and support is provided.

If you would like to find out about how you can play an active part in shaping your community, call Wesley on 01954 212100 or mail wesley.freeman-smith@care-network.org.uk.

Carers Away Day

Do you care for someone? A carer is a person of any age – adult or child – who provides unpaid support to a partner, child, relative or friend, who could not manage to live independently, or whose health and wellbeing would deteriorate without this help. Those receiving this care may need help due to frailty, disability or a serious health condition, mental ill health or substance misuse.

Cambridgeshire's Carers Away Day 2014 is being held on October 3rd, 10am-4pm, at the Marriott Hotel in Huntingdon. This free annual event provides carers with the opportunity to take part in informal discussion groups with expert speakers, relax, get creative and have fun by taking part in a range of afternoon activities, and to visit the marketplace of information and advice stands. Lunch and refreshments are provided.

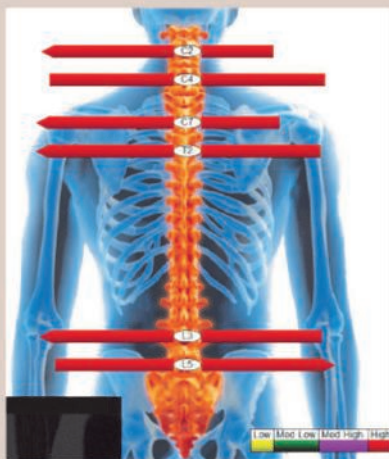
This is an opportunity to meet other carers and share your stories and experiences. Places are limited so please book early to avoid disappointment. To book your place at the Carers Away Day 2014 call the Carers Support Team on 01480 377616 or email: CarersSupportTeam@cambridgeshire.gov.uk. For more information about the day visit www.cambridgeshire.net

There may be support for carers to attend the event so please ask for any assistance you might need to enable you to come.



BACK AND NECK PAIN SPECIALISTS

Winners of the **Patient Partnership Quality Award** from the Royal College of Chiropractors, our Milton clinic offers you excellent treatment for neck and back pain.



Using the latest technology the **Myovision** system allows for increased accuracy in diagnosis and treatment.

See our website or call us for more information:

www.miltonchiropractic.co.uk 01223 864444



2013 - 2015

Accepted by all major
insurance companies

Luxury therapies at affordable prices



Treat yourself to some me time...

...in my home-based holistic treatment room, exclusively for women and by appointment only. I offer a selection of treatments in a professional but personal, one-to-one, friendly, comfortable and relaxed environment.

20% off all treatments on your first booking.

Aromatherapy

Organic Skincare

Hot Stone Massage

Manicure

Pedicure



No27
THERAPY ROOM

Call to book **01223 501534**
27 Fen Road · Milton
Cambridge CB24 6AD
www.no27therapyroom.co.uk

Foodshare

Our aim is to encourage all gardeners to grow a bit more veg and donate the excess to charity. We also want to link school allotments with local charities and encourage school children to grow food for those in need in their community.

One way E.A.C.H. reduce their food bills is by receiving donations from the Allotment via Foodshare volunteers. We currently have Mondays, Wednesdays and Fridays covered. The Foodshare rota runs from May to September. After that, if you have an allotment (or are passing it) and can check the 'bin/station' (taking any produce in there straight to the hospice, if possible) that would be fantastic. If there is produce but you can't take it then please text me on 07895 199028.

We are currently testing a 'totaliser' designed by a member of the Foodshare team, to allow people to keep a record of how much produce they have donated.

Many thanks to all the Milton plot holders who have donated their excess produce to the hospice. We will collate the amount and report back in the next issue.

Theresa, Foodshare Ignite Team

AFFORDABLE STORAGE

- ✓ SECURE STORAGE
- ✓ FLEXIBLE HIRE PERIODS
- ✓ COMMERCIAL & DOMESTIC
- ✓ RANGE OF SIZES AVAILABLE
- ✓ OFFICE & RETAIL
- ✓ 24 HOUR ACCESS
- ✓ EXCELLENT STORAGE
- ✓ CCTV MONITORED
- ✓ PICK-UP / DELIVERY SERVICE

01223 420440 / 07711 084164

email: mwheeler.bromley@btopenworld.com

UNIT 105, NORMAN INDUSTRIAL ESTATE, MILTON, CAMBRIDGE, CB24 6AT

From the Archives

10 Years Ago: Sept 2004

Tom Gillmore to Retire

After almost 21 years as Head teacher at Milton Primary School, Tom Gillmore has decided to retire at the end of the school year, July 2005. Tom has been responsible for leading the school through many changes and two successful Ofsted reports. He describes his time at the school as both stimulating and professionally rewarding but is now looking forward to taking up other more leisurely activities.

25 Years Ago: Sept 1989

What a WHOPPER!

Mike Lock accepting a large Pumpkin from James Capitain for the Flower and Vegetable Show held at The Community Centre on the 2nd September. James won first prize with his Pumpkin at 62lb. Did Mike Lock's gardening tips help?



R.B. Electrical LTD

N.I.C. Registered

**Your Milton Domestic
& Industrial Specialists
25 Yrs Experience**

Tel. 365200

A Field of Fruit

Black berries green to crimson
Ripening prunes from June to July
crinkled and dry.

Blackcurrants juicy and sweet
ready to pick and eat.

Gooseberries round and sour
ripening every hour.

Cream whippy and free
nice for you and me.

Olives round and rhubarb sweet
packed with a powerful taste.

A field of fruit
like a sunset on an evening
Or a rainbow in the sky.

Miranda Steele

Prizewinning Film



My son Martin England (11 years old, until last summer a pupil at our local school, now in year 8 at the Perse) wrote, directed and produced a short film *What Sounds Would You Miss* that won first prize in a competition organised by Cambridgeshire Hearing Help (cambridgeshirehearinghelp.org.uk). All the films are at www.youtube.com/user/camhearinghelp. You can watch Martin's film there or click:

youtu.be/k_XGi2GH_jo

Eagle-eyed viewers might spot a few scenes filmed in the village - along Butt Lane where we live, and around the war memorial!

Mark England

June Litter Pick

*"A swarm of bees in June
is worth a silver spoon..."*

as the saying goes and a swarm of Litter Pickers is worth a 'Thank You'.

Eleven volunteers gave a couple of hours to join the Litter Pick on June 8th. We were 'christening' our new village litter picking sticks, bought with a donation from a village resident, Suzan Ziobro. Thank you Suzan.



June's swarm of Litter Pickers were Anna Bradnam, Robin Adams, Jo Snaith, Karen, Pirate Kenny and Erin Aymys, Anne Stirrups, Angela Steele, Elaine and John Proctor. Peter Harris kindly took the photograph.

It was a beautiful sunny day and we were pleased to find rather less rubbish to collect than on previous occasions - hoorah! Nevertheless we collected 13 bags of rubbish between us from the Cambridge Road and the slip road to the A14, The Sycamores Recreation Ground, under the Jane Coston Bridge and along the bund.

Thank you to all those who took part. Seeing Litter Pickers in action, a village resident offered to help out next time, which was great. The next Litter Pick will be around the last weekend in October (date to be confirmed).

Anna Bradman

Organisations

Milton WI

Autumn is in the air with all it brings, but we have had a great summer. July brought our annual outing this year travelling to Hythe and the Romney Marsh. We had an excellent tour guide, a lovely sunny day, and a fish and chip lunch by the sea. In August, twenty members had lunch at the White Horse and there were various leisure activities pursued as well as hosting tea and cakes at the Village Fayre.



The WI movement will be 100 years old next year and plans are well in hand to commemorate the event. We hope the photo taken at Baits Bite Lock of some of our members will be selected for inclusion in the baton which will journey around the WIs.

On September 16th, Robert Parker will be talking to us on family history research. Our October meeting will be organised by a small band of our own members who will choose the content, speaker etc - always a welcome change from normal proceedings. November will be Chris Clarke with a theatrical make-up demonstration.

We have regular monthly meetings which are held in the Church Hall (7.30 pm on the third Tuesday). New members are always welcome at our WI meetings, and anyone can come along for a taster before deciding whether to join. You can contact our President Gill Offley (01223 293231) or Secretary Bridget Crow (01223 441755) for further details, or you can just come along.

Anne Newman

PHYSIOTHERAPY

Treatment for sports injuries, back and neck pain, joint problems etc.

Liz Cradock MCSP, MICT
Chartered Physiotherapist and
Reflexologist, HPC registered

Recognised by major medical insurance companies

Treatments at:
'Wellbeing at 17', 17 High Street,
Waterbeach CB25 9JU

Tel: 01223 860928 Mob: 07714 052389
Email: liz.cradock.physio@gmail.com

STRIKE FIT

Fridays 1pm-2pm
Milton Community Centre

also available
1 to 1 personal training

Contact : Alex Campbell
Tel. 01223 862184 or 07746
122749

Email alex@alexercise.co.uk
www.alexercise.co.uk

Milton Community Café — New Venue

We were delighted to have so many people coming to the Milton Community Café on Tuesday August 26. Sue Nunn and I picked up the less mobile by car whilst Jane and Sally got the tea and cakes ready and very quickly we had a full house. Our baker, David Hutchings, had made a rich ginger cake and biscuits the size of saucers!

Soon the Scrabble players bagged the sofa and became immersed in triple letter and double word scores. The two Davids, Tony and I had a go at playing Settlers of Catan. Sue Nunn took a break from behind the counter and challenged one of the other ladies to a game of table tennis!

The youth centre was great but we needed a more central location, so from September we will be in the Community Centre Lounge on the fourth Tuesday of every month (if possible). After five months at the low and heavily subsidised price of £1 per person for a drink and excellent cakes baked specially, we are going to adopt the £2 fee used by some other clubs. This should help with the venue hire. I'm happy to keep subsidising the cakes!

The next Community Cafe is booked for Tuesday, 23 September, 2:30-4:30pm. Entry is £2.

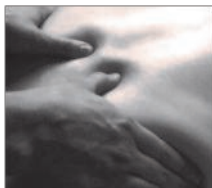
If you need a lift to the venue, give either Sue Nunn or myself call a couple of days in advance (numbers below). We look forward to seeing you at our next Community Cafe. The Community Café is an idea from our Milton Surgery Patient Participation Group.

Chris Thomas - T: 01223 440024

Sue Nunn - T: 01223 861747

Sports Therapy Services

Sports Massage and Injury Rehabilitation



Don't put up
with the pain

SAVE 25% on your
first appointment

Additional offers available

call Lesley on **07940 110309**
or visit
www.sportstherapyservices.co.uk

Need glasses?

Buy direct from the manufacturer!



SAVE UP TO 75%

Just bring in your up-to-date prescription for a Top Quality bargain.

- Premium frames & lenses
- High/Complex prescription
- Reglaze your own frame*
- Emergency supply & repairs*
- Free specs for NHS Vouchers*
- Large selection of frames

(*T&C's apply, please call for details)

Please telephone for an appointment

01954 231545 or 07824 706969

email: info@all-eyes.co.uk

www.all-eyes.co.uk



Visit our Factory Shop:

20 Norman Way Ind. Park,
Over, Cambridge, CB24 5QE

Mon-Fri: 9.00am to 5.00pm

Flu Vaccinations

Milton Surgery will be running the following dedicated flu clinics:

- + Saturday 11th October 9–11am
- + Tuesday 14th October 7–10am
- + Monday 20th October 4–8pm

Flu can be unpleasant but it will usually clear up on its own in a week. However, flu can be more severe in groups such as:

- + anyone over the age of 65
- + pregnant women
- + children and adults with an underlying health condition (particularly long-term heart or respiratory disease) or weakened immune system

Visit www.nhs.uk for more info. These groups are more likely to develop flu complications, such as pneumonia, so a flu jab is recommended every year. The vaccine is given free on the NHS to:

- + adults (18+) at risk of flu (including everyone over 65)
- + children 6 months to 2 years at risk of flu

To make an appointment for a flu jab, or if you are unsure if you are eligible for the flu jab on the NHS, please contact the surgery on 01223 420511.

Milton Good Companions

We are looking for volunteers to help with the Friday club held at Barnabas Court on Fridays (i.e. next term 19 Sept-19 Dec 2014) We particularly need another Leader on approximately a once-a-month basis and also for kitchen assistance.

Anybody interested to know more details please contact Margaret Nunn (01223 860829) or Pauline Waters (01223 860620).

Milton Pre-School

Date for diary: The Cygnets Milton Pre-School Annual General Meeting: October 16th at 8pm, upstairs at the Community Centre.

News from Cygnets: we are now offering full day and half day sessions. There are still a few places available from September. Contact 01223 862323 or

milton.cygnets@gmail.com

Swedish Massage



Contact Alex Campbell on 01223 862184
or 07746 122749
email: alex@alexercise.co.uk

Benefits include*:

- Relief from Stress, Anxiety and Tension
- Feelings of Deep Relaxation
- Improved Mood
- Improved Sleep
- A general sense of Wellbeing

Appointments available in Milton & Chesterton
Sports Centre, Gilbert Road, Cambridge

* Massage should not be used in place of conventional medical care. Always consult a GP or other Health professional for medical attention and advice.

Matthew Harney

General Building Work
Painting & Decorating

matthew.harney@btinternet.com

Tel: 01223 696508

Mob: 07962 398114



College of West Anglia: News & Events

Campus opens up to record visitors

Organisers believe there was a record attendance at this year's Open Farm Sunday, run at the Milton campus of the College of West Anglia.

Alison Barber, head of faculty at the campus, said: "We are absolutely thrilled to have had over 2000 visitors. It is the most we have ever had. It has clearly grown and we got some lovely comments from the visitors."

As well as being able to see animals of all shapes and sizes and rarity, there were numerous attractions, tractor rides and equine displays and visitors were able to handle some of the smaller animals, housed at both the main campus and the farm. One of the newest attractions was a baby llama, born at the farm only two weeks earlier. There were rheas, alpacas, farm animals and smaller animals.

Open Farm Sunday is a growing national promotion, started in 2006, that is designed to get people more interested in farms, farming and food.



Farmer Tom's Open Mornings

Woodside Farm has been throwing its gates open to the public. Visitors had a chance to get up close and feed some of their animals, including lambs, chickens, calves, llamas and pigs. Also there was pedal tractors and children's colouring. For more events like this, visit the College of West Anglia's website www.cwa.ac.uk.

travel counsellors



With us...it's personal

MILTON VILLAGE

TRAVEL AGENT
MR ELI KARRAM

IATA and ATOL Member

I can book any holiday you may have seen elsewhere
Generally more choice and flexibility than available online
No limit on booking size Business travel UK and abroad
Everything financially protected, including flights only
26 years experience No obligation quotations

01223 864260 or 07963 841 679 any time

eli.karram@travelcounsellors.com
www.travelcounsellors.co.uk/eli.karram

2013 awards: Sunday Times / HSBC International Track 200 and
Sunday Times Profit Track 100

Ω

Omega Clean

Cambridge

100% money back guarantee.

Carpet – Upholstery – Rugs

Spotter with every clean. Free!!

01223 864335/07734 711839

Safe – Natural – Cleaning

www.omegaclean.co.uk

White Horse

Tel: 01223 860327

We hope you managed to get along to the White Horse beer festival and joined us in celebrating Ava's birthday and our 30th wedding anniversary.

There is lots going on this autumn, with Poker starting on Wednesday evenings at 8.30pm and Quiz Night every Thursday. We also have a new darts board (free to play), joining the pool and bar billiards tables.

Find us on Facebook to see our specials board and other news from the pub. When we get 500 likes on Facebook, one lucky liker will get free Sunday dinner for two!

Christmas bookings are now open so come and join us for your family or work celebration.

Alan & Ava

HOWARD'S WAY School of Motoring

Manual & Automatic Cars

- Male and Female Driving Instructors
- Pass Plus Courses
- Intensive Courses
- Instructor Training
- Theory & Hazard Perception
- Confidence / Refresher
- Patient and Friendly
- Top Grade 6
- Motorway Courses

HOWARD'S WAY WINDOWS

- Window Cleaning by Request
- Milton, Waterbeach, Landbeach
- Pubs, Clubs and Offices

T: 01223 440767 M: 07753 617310
E: hcradock@btinternet.com www.h2way.com

Lee Beamiss Carpentry & Building

Tel 01223 440001

Mobile 07815 118339

web site www.leebeamiss.com

email enquiries@leebeamiss.com

All your re-upholstery needs
"COVERED"

S. PROCTOR UPHOLSTERY

Antique & Modern
Domestic & Commercial

Foam Cut To Size
D.I.Y. Sales

Family Trade Since The 1940's

TEL: 01223 440430

Email: sproctorupholstery@gmail.com

C2 BUTTON END IND EST, HARSTON, CAMBRIDGE, CB22 7GX

MILTON ANTIQUES AND COLLECTABLES

Offering a wide range of items
Clocks, China, Glass,
Brass, Copper, Silver plated articles
Costume jewellery, small pieces of furniture
Musical instruments and much, much, more

363 The Rowans Milton Cambridge

Tel No. 01223 860061

Mob: 07771620752

We also purchase good quality items.

Lion & Lamb

Tel: 01223 860202

The extensive work to refurbish our garden, patio and car park was completed in August. We now have a brilliant children's play area - "The Lagoon" - with sunken pirate ship, new bouncy castle and giant games along with an al fresco dining space. There is also our brand new website, www.lion-lamb.co.uk, where you can find details on all our forthcoming events along with other information, news and pictures.

On Sept 26th, with thanks to Shân and Karen, we are hosting a Macmillan Coffee Morning (9-11am). Come along for some tea and coffee with delicious home made cakes, biscuits and pastries. We hope to have craft and gift table top stalls along with a raffle and tombola to raise money for this worthy cause.

Wednesday from 8pm is now Poker Night! We have a private room with poker table, waitress service for drinks along with complimentary snacks for the players. Other upcoming events: *Soul Nights*: Sept 19th, Nov 14th; *Ladies Dinner Club*: Oct 7th, Nov 4th; *Psychic Supper*: Oct 22nd, Nov 19th; and live band "The Submarine Racers" on Oct 10th.

Our Halloween Party will be on Oct 31st with hog roast & BBQ from 6pm. FREE children's party from 6:30-8pm with games and prizes for the best Halloween costumes, with the adults taking over from 9pm for the fancy dress disco.

Lawrence & Sally

Jolly Brewers

Tel: 01223 863895

Monday Club: for every drink bought 4-7pm your name will be entered into a draw - if it is pulled out at 7pm you win 5 free drinks of the type purchased (you don't have to drink them all at once!)

Milton Colts Football Club: The Jolly Brewers are proud to be sponsoring the Colts U16s Boys Football Team for this season – Good Luck Lads!!!

Restaurant Events and Themed Evenings

Sept 21st: Milton Country Park Autumn Festival – we will be selling Milton Brewery Ale and Cromwell Cider; this will be our first outside bar.

Sept 24th: Traditional Andalusian Farmhouse Food

Oct 29th: Tastes of the Far East

Nov 26th: Winter Warmer Pie Night

Our 2nd Wine Tasting Evening was a great success. The next event will be held in the New Year.

The pub is the ideal setting for any celebration – contact Caroline who will be happy to help! For our regular offers please check the website.

www.jollybrewersmilton.co.uk



YOUR PROPERTY LOOKED AFTER AS IF IT WERE OUR OWN

**LETTINGS
LETTINGS
& LETTINGS,**

**IT'S ALL
WE DO,
7 DAYS A
WEEK**

Lettings and
Property Management
Specialists
Over 30 Years
Experience in the
Cambridge Lettings Market
24/7 contact

Direct line to Jo Clark
07976 463 944
Direct line to Nicola Webb
07896 352 160
Office 01223 967277
or 01954 214441

www.letsrentcambridge.co.uk
info@letsrentcambridge.co.uk



Lettings and
Property Management
Specialists



Landbeach and Milton Baptist Church

Sunday Services

- 10.30am Family Service
- 6pm Evening Worship

Midweek Home groups

- Tues 7.30pm, Landbeach
- Thurs 10.30am, 143 Waterbeach Rd.

All are welcome to our small but friendly fellowship. Further details from Maureen Clark, tel 01954 250118

EMPLOYMENT OR FAMILY PROBLEMS?

- *Settlement Agreements*Unfair Dismissal*
 - *Discrimination*Breach of Contract*
 - *Divorce*Children Disputes*
 - *Financial Settlements*Separation Agreements*
- FREE INITIAL ADVICE**

**SMITH
MAY
SOLICITORS LLP**

Barnwell House, Barnwell Drive,
Cambridge CB5 8UU

BRIDGET GILTINANE – Family Lawyer

bridget.giltinane@smslaw.co.uk

JOANNE MAY – Employment Solicitor

joanne.may@smslaw.co.uk

CALL 01223 415372

FREE PARKING

www.smslaw.co.uk

Sunday services



Midweek groups & events

8am Holy Communion

A quiet, reflective way to
start the day.

10.30am Morning Worship with Children's Groups

Designed to cater for the
whole church, from ages
0-100+. Refreshments
served.

Evening Services
See website.

Little Rainbows Toddler
Group, Parents & Under
1s, Lunch Club, Mothers'
Union, Stitchers' Club,
Reading Group ...

For full details of all
these and more
please visit:

allsaintsmilton.org.uk

Wildlife Notes

I've had several friends and relatives move house recently and mention various experiences with their new gardens. This, combined with a recent posting on our own village email list, Milton Chat, has made me think about gardens and wildlife.

My cousin was saying the first thing she did was strip everything out of the garden of her new house, which seems a terrible mistake. Surely you can't know that a shrub which doesn't look terribly interesting in autumn needs to be removed until you've seen what it does in the spring? It might produce some lovely flowers, or be the place the blackbirds or robins nest, and could for one season each year be the highlight of your garden.

Autumn is a good time for careful pruning, as plants are mostly going dormant: especially if things are overhanging a pavement or path, or have just got a bit too big, or are misshapen. You can always take more off another day, but you can't put back later.

If you want to put a bird feeder in your garden, it is better on a pole in the middle of lawn or a flower bed, rather than hanging from a tree. Firstly, you can see the birds more clearly, and secondly, they can see predators more easily and cats can't climb the pole and get them while they are feeding. For this to really work, the birds need a staging post to approach the feeder from. This is where decent-sized shrubs or small trees come in handy, as the birds stop in these, check the coast is clear and then come in to grab some food. They may then go back to the bush to actually consume the food.

Shrubs that are thick at the bottom are useful to wildlife like hedgehogs, and you can even feed some of your trimmings off the top into the bottom to make more of a pile for hogs and insects alike rather than putting them all in the green bin.

So whether you've recently moved house, or have been there for years, for the sake of those creatures who share your garden with you, be judicious in your tidying this autumn.

Heather Coleman



AG First Aid Training

Amelia Grant
First Aid Trainer Instructor

31 Old School Lane
Milton, Cambridge
ameliagrant@btinternet.com
<http://www.agfirstaidtraining.co.uk>
07795680733



*Luxury therapies
at affordable
prices.*

No27
THERAPY ROOM

27 Fen Road · Milton
Call to book 01223 501534
www.no27therapyroom.co.uk

20% OFF
all treatments
on your first
booking

Jason's Big Bike Challenge

Jason Butcher from Knights Way has recently completed the biggest challenge of his life... to cycle 1000 miles from Lands End to John O'Groats!



Starting on 6th September, Jason aimed to complete the challenge in just nine days in order to raise money for the children of Lesotho in Africa, where around 23% of children (41,000) live with HIV/AIDS.

The money raised will go towards increasing antiretroviral treatment, which is currently only received by around 10% of the children. Jason aims to raise £3000, so if you would like to make a donation in sponsorship of his ride then this can be done via:

www.justgiving.com/jason-butcher1

Bike Volunteers Needed

- ◆ Do you love riding your bike?
- ◆ Are you young at heart?
- ◆ Do you like being outdoors?
- ◆ Do you enjoy being with people of all abilities?
- ◆ You don't need to be a cycle mechanic!



Find out more about what would be involved by getting in touch or popping by one of our Try It Out Tuesdays or Family Fun Sundays (see www.youcanbiketoo.org for dates).

No commitment necessary - just come and be nosy! This may be just the job for you!

Interested? Get in touch with Ruth ruth@theyoucanhub.org.uk or phone her: 07521 905448

PHYSIOMOBILE

Sarah Koets BSc MCSP MAACP

Registered with the Health and Care Professions Council

- Back and neck pain
- Sports injuries
- Post operative rehabilitation
- Arm, hand and shoulder problems



- Hip, knee and ankle pain
- Repetitive strain injuries
- Postural problems

Self referral accepted Recognised by all major insurers

Milton Surgery, 87 Coles Road, Milton, Cambridge, CB24 6BL

07790 512094 - www.physiomobile.co.uk

Also at: Fen Ditton and Girton



I'm so excited to be bringing to Milton this exciting gentle movement and dance class for mums and dads or carers with their babies and toddlers in soft structured slings and baby carriers or wraps. I have a four year old daughter who I carried as a baby; when I became pregnant with my son I knew I wanted to use carriers with him for a lot longer. Having your baby so close to you and having your hands free is great.

While looking at carriers for sale I came across Sling Swing which had been founded in Wolverhampton. They had even taken their dancing to Britain's Got Talent and danced in front of the Judges. I loved the idea of this class and wanted to bring it to my area.

Musical styles include pop, hip hop, Charleston, Cha Cha, Salsa, Swing, Disco, Motown, 90s, Musical theatre and much more. Participants are encouraged to wear their little ones in high quality slings and carriers, and spares are always available for people wanting to try one out.

Classes are fun, exciting and innovative. Come along and have a boogie!! The aim of the classes is to have fun in a friendly, musical environment and to really bond with your baby!

Classes will start in Milton on Monday 22nd September at Milton Community Centre. They will be at 10.40am until 11.25am.

Your first class will be free. Drop in price is £5 a session. The other options are to buy a card of 5 lessons to be used within an 8 week time limit for £22.50, or the full term of 11 classes for £44.

Please find us on Facebook ('Sling Swing Cambridgeshire').

Stacey Thomas

GJK Accountancy Limited

**Accountancy services
annual and monthly accounts
bookkeeping
VAT and tax returns
Company formations**

griffith.kinsman@ntlworld.com
30 The Rowans, Milton, CB24 6YU
Mobile 07710 503 148

Curry & Pizza

Selling delicious...

- ♦ Curry
- ♦ Southern Fried Chicken
- ♦ Burgers
- ♦ Pizza



6B High Street, Milton, Tel: 861948

Dance, Movement and Storytelling for Children

Through lively classes we invite children to participate in stories and movement in order to encourage independent thought and enquiry. Our material is lively, educational and creative, encouraging both group interaction and individuality.

Classes on Friday afternoons at Milton Primary

3.30pm (2-4 years) and
4.15pm (4-7 years)

We also run workshops in the holidays and Children's Birthday Parties!

Tel. 07837844759

michelle@creativemovements.co.uk

www.creativemovements.co.uk

www.facebook.com/cambridgecreativemovements



Milton Bowls Club: New Sponsorship



Milton F.C. (Seniors)

If you are interested in joining as a player or helper and would like information about the club please call Club Secretary Fraser Confrey on 07763 351490 or email fconfrey@waitrose.com

If you are under the age of 30 then you will have heard of a Bar Hill fashion retailer called SUPREMEBEING. So: what are these persons of more mature years doing wearing jackets made by SUPREMEBEING?

Milton Outdoor Bowls Club has been sponsored by the company and is very

grateful to SUPREMEBEING (www.supremebeing.com) for providing these splendid jackets to wear on the green. There have been many favourable comments from other clubs.

As one of our committee members commented, “we can’t play bowls but we sure do look smart!”

Jim Daniels

Godden Auto Services Ltd

Benet Garage, Cambridge Road, Milton, Cambridge, CB24 6AW

**Servicing and repairs
to all makes of vehicles**

MOT TESTS WHILE YOU WAIT

By appointment only

www.goddenautoservices.co.uk

All major credit cards accepted

Tel: 01223 420380

Opening times: Monday to Friday 8.30am—5.30pm, Saturday 8.30am—12.30pm