



www.mvv.org.uk

Milton Village View

Issue No. 119 – Sept 2015

In This Issue...

- 8-page "What's On" pull-out
- Autumn Festival
- Street Lights Off - Survey
- Collection for Refugees

And much more!



Lane Academy at the Summer Fayre, Mary-Ann Johnson

Contact Us

Send us your news and photos:

vv@miltonvillage.org.uk

1 Knights Way, Milton, CB24 6DE

Deadlines for articles are:

12th January

12th March

12th May

1st September

1st November

Issues will be published approx.
2 weeks after the dates above.

Online Archive

Find back copies of Village View
(back to April 2011) on our website:

milton.org.uk/mvv

Printed by Langham Press Ltd.

**Delivered Free
Circulation 2,000**

Publisher's Notice

Whilst every effort is made to ensure accuracy the publisher accepts no responsibility for errors or omissions. Views and opinions expressed in the Village View are not necessarily those of the publisher or the editorial staff. The publisher does not accept any responsibility for claims made by advertisers.

Milton Outdoor Bowls Club A Pre-Christmas Concert



To celebrate the 25TH anniversary of Milton Outdoor Bowls Club.

With Nigel 'Boy' Syer (comedian and musician) at Milton Community Centre, Saturday 28th November, 7 for 7.30pm.

Tickets are £8 for adults, £5 for under 16s, available from 1st October at community centre office OR contact Bob Waters on 860620.

Light refreshments included & raffle.

School Fireworks

The Firework Evening at school is on Friday 6th, gates open at 6pm, fireworks begin at 6.45pm.

Community members are welcome to join the school at this fun event.

Tickets available on the gate. Pre-school children free.

Food stalls, drinks and fun 'light up' goodies will be available.

All proceeds benefit the children at Milton Primary School. Thank you for your support.

MSA Committee



If you use our advertisers, please mention Village View. Thank you to our volunteer distributors.

September

Sun 27th Autumn Festival/Produce Show, Country Park, 11am-4m (p.4)



October

Sat 3rd Calais Refugee Sale, All Saints' Church Hall, 11am-1pm (p.7)

Sat 3rd Women's Breakfast, White Horse, 8.30am

Sun 4th Harvest Service, 10.30am / Harvest Tea & Songs of Praise, 4pm

Sun 4th CWA Table-top Sale, CWA indoor arena, 10am-2pm (see p.22)

Weds 7th Learn to Walk Nordic course, Country Park, 1.30-2.30pm

Sat 10th Phoenix Trust Charity Dance, Community Centre, 8-11.45pm

Tickets on sale from Phoenix Trust Sales Office

Weds 14th Learn to Walk Nordic course, Country Park, 1.30-2.30pm

Weds 14th Community Centre AGM, Community Centre Annexe, 7 for 7.30pm (p.23)

Thurs 15th Tennis Club AGM, Community Centre, 7pm (p.23)

Sat 24th Litter Pick, meet at the Parish Office, 2-4pm

Sat 31st Messy Light Party, All Saints' Church, 4.30-6.30pm



November

Sun 1st Service of Remembering, All Saints' Church, 4pm

Fri 6th Fireworks Night, Milton Primary School, 6 for 6.45pm (p.2)

Sun 8th Remembrance Day Service, All Saints' Church, 10.30am

Weds 11th Act of Remembrance, Coles Road War Memorial, 11am

Sat 28th MOBC Pre-Christmas Concert, Community Centre, 7 for 7.30pm (p.2)

See pp.18-19 for more events at the pubs.

See www.milton.org.uk/diary.html for more event details.

See www.miltoncountrypark.org for more park event details.

Junior Superheroes

Cambridge Junior Parkrun celebrated its first anniversary earlier this summer, with a superhero-themed run.



Charlotte Lemanski



Charlotte Lemanski

Batman and Robin ran with Supermen, Spidermen and others to mark the occasion.

Mary-Ann Johnson

Breast Cancer Campaign Thank You!

A huge thank you again to everyone who donated & supported our stall for Breast Cancer Campaign at the Milton Fete.

We raised £330! This will go directly to the charity, to help change the lives of people affected by breast cancer.

Thank you!

Alice & Karen

Autumn Festival & Produce Show



Milton Country Park's Autumn Festival returns on Sunday 27th September after a very successful first event in 2014. The event is a **free family fun day** designed to showcase some of our finest local independent food, craft and community enterprise, while being an important fundraiser for the park.

Having listened to last year's feedback we have doubled the size of the **craft area**,

including work by popular village artist Alison Hullyer and **workshops** given by community arts group Rowan Humberstone.

Foodies will be spoilt for choice, with highlights including the popular street food collective foodPark in the meadow, new restaurant-style food provider Provenance, and tea party specialists The Events Tree taking over the orchard to serve cream teas in a vintage tent.

Families will also have lots to keep them busy with **den building**, **campfire cooking**, **pond dipping**, **forest school crafts**, 'hay play', boats on the lake, and animals and tractors from the College of West Anglia. In the Wild Place, local community enterprise Gap Learning will be adding a magical theme with **enchanted workshops**, where budding little witches and wizards can create charms, music, spells and potions.

You can also enter the **produce show**, visit the Jolly Brewers' bar for **local ales** and cider, see a yarn bombed bike, get a free **bike health check** from C6 Bikes, join the orchard volunteers at the apple press, dance around a maypole and get your face painted – festival style!

September 27th 11am-4pm. Free entry, car park £3

For information, including booking activities, please visit:

www.miltoncountrypark.org/autumnfestival.html

Sarah Harris, Lorraine Whybrow and Sarah Metcalfe

**PAINTING
DECORATING
GLAZING**

Mobile
07860 453533
Phone:
01223 700800
(local resident)



B.J. LEONARD

Stephanie's
MILTON'S UNISEX HAIRDRESSERS

Professional Hairstyling for Men and Women

Telephone: 01223 420526

Discount for all new clients

49 Cambridge Road, Milton, Cambridge, CB24 6AW

Milton Village Fayre, 2015

Milton Fayre organising committee would like to thank everyone that supported us with the fayre this year. The fayre was a massive success, raising much-needed funds for local charities. There were 80 stalls, demonstrations and live music. The free waterslide provided by Alexercise proved to be very



popular, along with the inflatables for £1 a go.

Special thanks go to Community Centre Manager Andy Gray - and



Geoff who jumped in to help on the front entrance for most of the day! We are very grateful to Cambridge105 for their support before and during the event and very special thanks to Spencer and Tara at Tesco Milton for supplying the stage at short notice and for all your other support. We'd also like to thank all the local businesses who sponsored an advert in the programme, or provided a raffle prize.

Photos: Guy Austin

Milton Fayre Committee

(Alex Campbell, Angela Mason-Bell, Barry Turner, Judi Turner, Hue Holleran, Charlotte Holleran, Steve Austin, Liz Austin, Jeannie Austin, Fiona MacDonald)



**HEATING & PLUMBING
SERVICES LTD**

- GAS SAFE REGISTERED
- Boiler Installation - Gas & Oil
- Complete Bathroom Design and Installation
- Landlords Certificates
- Power Flush
- Tiling
- Under Floor Heating
- Gas Boiler Servicing
- Free Estimates

* Covering Cambridge for 30 years *



Ph: 01223 242544

Email: malcolm.potts@btconnect.com
Unit 8, Ronald Ralph Court, Wadlows Road,
Cambridge, CB5 8PX



2163

**J.P.Morley
Roofing**

Est. 1985



**All types of roofing
Flat roof specialist**

1 Old School Lane, Milton

Home: 01223 863259

Mobile: 07941 198771

josephmorley@btinternet.com

Celebrating after the appeal hearing



Village Fayre 2016

Regrettably, the 2015 Village Fayre Committee have decided not to continue, so Milton we are looking for a new committee to come forward and organise next year's fayre. Please contact Andy Gray at the Community Centre for more details – mcc@miltonvillage.org.uk or 01223 862763.

The Community Centre and the Parish Council would like to take this opportunity to thank the outgoing Committee for their hard work throughout the year and in particular Hue Holleran and Fie MacDonald, who were both instrumental in making this year's fayre such a success.

*Rob Farrington (Chair) and Andy Gray
(Milton Community Centre Manager)*

Milton-IVC Bus Saved!

The free school bus between Milton and Impington Village College has been saved, thanks to the hard work of parents and supporters. They collated a 76-page comprehensive report, including painstaking measurements and photographs, which demonstrated the dangers of the route; they did traffic analysis which showed there was not sufficient time for pedestrians to cross the entrance to the P&R site safely; they gathered signatures on a petition and they collated letters from children attending IVC expressing their concerns. Finally, numerous letters of appeal were submitted by parents, councillors and, tellingly, a trainer of bus drivers – all expressing concern about the safety of the route.

The Appeal Hearing was on 30 June. Having heard the presentation by the council officer and his answers to questions from councillors and parents, the Panel decided that they did not believe that the route was 'available'. This was based on the poor quality of the responses from the council officers, to questions about the safety of the route and how this had been assessed, and the written evidence presented by the Appellants.

Milton Bus Group



MILTONgasservices
your local gas specialist

161938



- Servicing, Installation and Repairs
- Gas Boilers, Fires, Cookers and Central Heating Systems
- Powerflush Cleansing of Central Heating Systems
- Energy Efficiency upgrades
- Landlord Gas Safety Checks and Certificates

Contact - Eddie Kikas
Your Local Gas Specialist

Tel/Fax: 01223 861810 Mobile: 07831 228181

Email: miltongas@btinternet.com
www.miltongas.co.uk



Pilates Classes Milton & Landbeach

Mon 9.30am - Mixed Ability Mat Class (MCC)
Mon 10.30am - Mixed Ability Mat Class (MCC)
Tues 6.20pm - Intermediate Mat Class (Sch)
Tues 8.15pm - Mixed Ability Mat Class (Sch)
Fri 10.30am - Mixed Ability Mat Class (LVH)

Contact Liz on 07768 155278

or liz.dolman@lovepilates.co.uk

NVQ level 3 Pilates & PureStretch Instructor

For further info, visit www.lovepilates.co.uk

Help for the Refugees in Calais!

All Saints' Milton are collecting items of need for the refugees in Calais, and fundraising to help buy more supplies. Can you help?

At present the items most needed are:

Food; Toiletries; First Aid Kit Items; Warm Men's/ Teenage Boys' Clothes & Shoes - e.g. New Underwear, Socks, Warm Clothes, Trainers and Doc Martin type Men's shoes/boots (sizes 7-9), Men's Jeans/Trousers waist 28-32, belts, Woolly hats, scarves, gloves

Other: Blankets, Sleeping Bags, Duvets, Pots and Pans, Tents and Tarpaulins, Rubbish Bags, Candles, Dynamo Torches

The items and donations will be passed to Cambridge Calais Refugee Action, who are going to Calais on 3rd October and will deliver them to the refugees. There will also be deliveries from Cambridge to Calais every fortnight through the winter. Anything that can't be used in Calais will be passed on to where else it is needed.

There will also be a sale in the church hall on Saturday morning 3rd October 11am-1pm, to raise money for the refugees. If you have anything that could be sold, please donate these too. Please bring items or donations to the church office, weekdays 9-12.30pm, or Sundays 10-10.30/12-12.30.

As Justin Welby tweeted recently: "[This is] not politics, just the love of Jesus in action."

Many Thanks, Michelle Peters



Harmony

Hair and Beauty Salon

Expert hair stylists for Men, Women
and Children.

Beauty therapists offering a wide range
of treatments.

Chiropody (HCPC Registered). Sports therapy and massage
(See website for more details)

Gift vouchers available

6 High Street, Milton, Cambridge, CB24 6AJ

www.harmonysalon.co.uk

Call **01223 863636** to book an appointment
Open 9 - Late Mon - Fri
9 - 2pm Sat





ZUMBA®
fitness

Dance Fitness Class

Zumba Classes in Milton 2014
Licensed Zumba Instructor Liz Dolman

Milton Primary School
Tuesday Nights 7.15pm
All Abilities Welcome
Weekly £6 or 5 Session Card Available

For further information
contact Liz on 07768 155278
or liz.dolman@love2zumba.biz

Visit www.lovepilates.co.uk/zumba

AMBASSADOR LODGE
BED & BREAKFAST

37 High Street, Milton, CB24 6DF
(next to the Waggon & Horses pub)

Friendly, family-run B&B

Contact: Phil or Fizz Turner
Tel: 01223 860168

www.ambassadorlodge.co.uk
e-mail: ambassadorlodge@yahoo.co.uk



PhoenixMilton

Quality handmade paving and garden accessories and supported work and life skill development

*For all your Concrete
and Wooden Garden Products*

Paving, Edging, Ornaments, Bird Feeders, Planters, Trellis,
Nest Boxes, Pot Hangers, Picnic Benches and much more

**A limited range of Pot Plants
for your Garden, Planters, and Pot Hangers**

Tel: 01223 420669 Opening Hours Tues - Fri
9.00am to 3.30pm

www.phoenixtrust.org Unit 8, Milton Trading Estate

Supported work experience for people with learning difficulties

SILVER SERVICE TAXI

*Licensed Taxi Service,
Reliable, Local & Friendly*

Ian May

07989 197816



Email: silverservicetaxi@gmail.com

Multi-Seater 1 to 8 passengers
Airport & Group Bookings welcome
Specials Needs & A Speciality

www.silverservicetaxi.co.uk

STAR CURTAINS

25 years of expertise
Come & buy direct from our factory
Beautiful fabrics ~ superb quality ~
great prices
Friendly & efficient service

www.starcurtains.co.uk

2B Swan Lane Business Park,
Exning, CB8 7FN

Opening hours:
Mon to Thurs
9.00 to 4.30
Fri & Sat
10.00 to 2.00

01638
578700

County Council to Turn Off almost 90% of Milton Street Lights after Midnight

The County Council, as part of their ongoing cuts, propose to dim all street lights. They also propose to turn off almost 90% of the lights between midnight and 6am. This will affect 41 Cambridgeshire communities from April 2016 and will save the County £272,000.

Milton Parish Council were told in mid July that Milton is one of the communities that will be affected by this proposal as we now have the new street lights that can be dimmed and/or switched off.

There are 360 street lights listed in Milton and the County Council is proposing to dim all of them by 40%, and turn off 313 of them after midnight.

The only lights that will remain on after midnight (but will be dimmed) will be these:

- ◆ All the lights in Cambridge Rd, Ely Rd and Landbeach Rd. (35 lights)
- ◆ All the lights in High Street (*apart from columns L14WGQ, L20WGQ & L21WGQ which will be turned off*). (5 lights)
- ◆ Benet Close - Column no. L1WGY (1 light)
- ◆ Butt Lane - Column no. L1WGK (1 light)
- ◆ Coles Rd - Column no. L1WHT (1 light)
- ◆ Crane Industrial Estate - Column no. CC1 (1 light)
- ◆ The Rowans - Column no. L1WAQ & L60WAQ (2 lights)
- ◆ Willow Crescent - Column no. L5WGU (1 light)



Our initial survey shows that in addition some lights on linking passages are not on the county lists at all whilst others are and have been listed to be turned off so this will need further clarification.

Milton Parish Council has been asked to pay for the lights if they are to remain on after midnight.

The cost to the Parish Council would be around £4,000 per year (£12 per light plus admin fee).

It is likely that as more cuts are made, parish councils will be asked to cover the cost of other services and we are mindful of this and will have to decide priorities. Presently a Band D property in Milton contributes £73.63 per year to the Parish Council to cover the cost of running the wide range of services that are provided here, and £4,000 would be an increase of around £2.30 for each Band D property.

As the cost of keeping the lights on would have to be added to parish rate we would like to have your views and would be very grateful if you could **fill in and return our survey (on next page)** to: The Parish Office, Coles Road, Milton, CB24 6BL. There is also a box for returns located at the post office in Coles Road.

We also have an online survey which can be found at www.surveymonkey.com/r/K7JK5VL
The **closing date for the survey responses is the 27th Sept.**

Jane Coston, Chairman of Milton Parish Council



Milton Parish Council Street Light Survey

1. Do you think the Parish Council should pay to keep lights on that are to be switched off between midnight and 6am? **Yes/No**

2. Do you think the Parish Council should pay to keep all the lights on fully so they are not dimmed at all times? **Yes/No**

3. If the decision is not to pay for all the lighting after midnight are there any particular lights that you feel should remain on? **Yes/No**

If yes, please can you state your reasons and give the location and column numbers:

4. If the decision is not to pay for lights to remain on fully and they are therefore dimmed at all times are there any particular lights you feel should not be dimmed? **Yes/No**

If yes please can you state your reasons and give the location and column numbers:

Name: _____

Street name and number: _____

Please return this survey to: The Parish Office, Coles Road, Milton, CB24 6BL. There is also a box for returns located in the post office in Coles Road.

Thank you for your time filling in this questionnaire. **Please send us your responses by Sunday 27^h September 2015.** (We are happy to receive photocopies of this form)

C H LUMB

(BUILDERS)

DRAINAGE - GUTTERING
UPVC FACIAS & SOFFITS
PATIOS & FENCING
ALTERATIONS

01223 354402

Mobile 07762026290

Amethyst Caravan Holidays

Static Caravans available to
rent at Manor Park
Hunstanton

Tel: 07795 087907

Email:

amethystcaravans@hotmail.com



The Edmund Trust



Working with people with learning disabilities

Support Worker vacancies: part time (weekends, early morning/late afternoon), full time and relief (casual) work

Starting salary £8.16/£8.63 per hour*

The Edmund Trust is a local charity and our mission is to empower and support people of all ages with a learning disability, across Cambridgeshire.

We are looking for people who are keen to support children and adults with learning disabilities, who can demonstrate enthusiasm, flexibility, good practical and organisational skills and who have a “hands on”, common sense approach.

We have opportunities for people who are unqualified or qualified to Level 2 Diploma or NVQ2 in Health and Social Care – a good basic education is our minimum requirement as full training will be given. Ideally you will be a car driver, preferably with your own car.

This role will involve travel to Milton and Fulbourn for training.

Additional benefits: pension scheme, childcare vouchers, 30 days holiday per year, bank holidays paid at time and a half, business mileage paid at 40p per mile.

*depending on qualifications

For a job pack and Application Form visit our website www.edmundtrust.org.uk
or contact **Sue Chapman** on 01223 883130
or email HRco-ordinators@edmundtrust.org.uk

The Edmund Trust is an Equal Opportunities employer and welcomes applications from all sectors of the community. Successful candidates will be subject to Disclosure and Barring Service checks prior to appointment.

The Edmund Trust, Edmund House, 9 Church Lane, Fulbourn, Cambridge CB21 5EP
(Registered Charity No.1030968)

Milton Parish Council Vacancy ASSISTANT PARISH CLERK

Would you like to train as a parish clerk?

MILTON PARISH COUNCIL is seeking a flexible, reliable and self-motivated Assistant Clerk who enjoys working with the public to work in the Parish Office. Supporting the Acting Clerk; you will be responsible for administration duties as well as general admin support. The post is for 20 hours per month and initially will be on a 6 month contract. The successful

Improving Our Play Areas

Would you be interested in getting involved and working with a small group of parish councillors to plan and design improvements to our play areas?

Milton is lucky as it has many play areas spread across the village. These were installed at the time the village was expanding and some have been in place over 30 years. They have been maintained and equipment has been replaced when necessary but the Parish Council is now looking to replace equipment and improve these areas.

If you would like to get involved, please contact the Parish Office on 861447 or email:

clerk@miltonvillage.org.uk

applicants appropriate training* will be paid for by the council (*cost over £1,000, terms and conditions apply). We are ideally seeking someone with at least 3 years' experience in a busy office environment.

Starting Salary: between £8.61-£10.52 per hour dependant on experience. Ideally this post would suit someone who is interested in gaining experience as a Clerk and would like to follow a course to obtain a qualification to be an experienced Clerk.

For an informal discussion and/or an application form please contact Jane Coston, Parish Council Chairman or Susan Wilkin, Acting Clerk to Milton Parish Council on 01223 861447 or email: clerk@miltonvillage.org.uk

Applications must be returned by 19th October 2015 for interviews during the following week. Previous applicants need not apply.

Need glasses?

Save money, buy direct from ALL EYES Specs
Complete specs from only £9.00!*

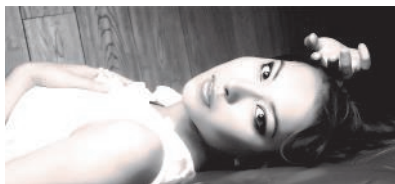
- Repairs & emergency specs*
- Reglaze your own specs*
- Complete sunspecs from £49.00*
- Specs for all sports
- Excellent customer service



*T & C's apply.

Just bring your new prescription to:

ALL EYES Specs Makers
20 Norman Way Ind. Park
Over, Cambridge CB24 5QE
Tel: 01954 231545; 07824 706969
Mon - Fri; 9am to 5pm
(PLEASE RING FOR AN APPOINTMENT)
www.all-eyes.co.uk



Save money this autumn on energy bills with the Cambridgeshire Energy Switch scheme, which has launched for the fifth time with registration now open.



Cambridgeshire Energy Switch

Previously, the scheme has enabled over 700 households within the county to make average savings of more than £200 per year. Registration is completely free with no obligations.

The scheme is backed by Cambridgeshire County as well as the County's five district and city councils. The Cambridgeshire Energy Switch scheme uses the collective bargaining power of residents to bid for better gas and electricity prices. The scheme is open to all residents, including those on either credit or pre-payment meters.

Register before midnight on **Monday 12 October** to find out whether you could save money on your energy bills. To register online, or find out more, visit:

www.cambridgeshire.gov.uk/switch

Alternatively, contact us for further information or assistance: tel 703874 or email Energy.Switch@cambridgeshire.gov.uk



Parklife 2015

Photos by Paul Oldham, taken at the Parklife event in June at the Country Park.



AFFORDABLE STORAGE

- ✓ SECURE STORAGE
- ✓ FLEXIBLE HIRE PERIODS
- ✓ COMMERCIAL & DOMESTIC
- ✓ RANGE OF SIZES AVAILABLE
- ✓ OFFICE & RETAIL
- ✓ 24 HOUR ACCESS
- ✓ EXCELLENT STORAGE
- ✓ CCTV MONITORED
- ✓ PICK-UP / DELIVERY SERVICE

01223 420440 / 07711 084164

email: mwheeler.bromley@btopenworld.com

UNIT 105, NORMAN INDUSTRIAL ESTATE, MILTON, CAMBRIDGE, CB24 6AT

R.B. Electrical LTD

N.I.C. Registered

**Your Milton Domestic
& Industrial Specialists**
25 Yrs Experience

Tel. 365200

From the Archives

31-10 Years Ago:
MVV Oct 2005

Head Teacher at Milton Primary School Retires

Tom Gillmore retired in July after 21 years as Headteacher of Milton CE Primary School. The governors held a retirement party for him, the children presented songs and cards at a leaving assembly and the parents presented cards and a cheque to Mr Gillmore in the playground. Tom Gillmore said "I have thoroughly enjoyed my time at Milton School. The job of headteacher is both challenging and stimulating. I shall miss everyone at the school particularly, of course, the children who have made the job so worth while. I shall be very sad to leave but I look forward to a new chapter in life."



Tom Gillmore

Below is part of a letter Tom sent home to parents:

'You may be interested in a few reflections on the changes I have seen in my 21 years here. There were 170 children in 6 classes when I was first appointed. It was then a typical small village school and the village was half its present size as well. Over my first 8 years pupils were being constantly admitted as new houses were built until we had over 400 pupils. We also went through a period of having four or five mobile classrooms before we were provided with a large new building 15 years ago to replace a small wooden block that stood where the junior building is now. In those days the juniors were in the present infant block and the infants were in the demolished building. My office and the library used to be where class 4 is now. The secretary's office was in classes 3 & 4 cloakroom. The main school entrance was next to it. The secretary had a large old typewriter. Now we have two office PCs on a network to the LEA. Such is the pace of change in a short space of time. So I feel that I have been the head of two different schools without moving from Milton.'

Tom is succeeded by new head, Sue Dorrington.

PHYSIOTHERAPY

Treatment for sports injuries, back and neck pain, joint problems etc.

Liz Cradock MCSP, MICT
Chartered Physiotherapist and
Reflexologist, HPC registered

Recognised by major medical insurance companies

Treatments at:

'Wellbeing at 17', 17 High Street,
Waterbeach CB25 9JU

Tel: 01223 860928 Mob: 07714 052389
Email: liz.cradock.physio@gmail.com

STRIKE FIT

Fridays 1pm-2pm
Milton Community Centre

also available
1 to 1 personal training

Contact : Alex Campbell
Tel. 01223 862184 or 07746
122749

Email alex@alexercise.co.uk
www.alexercise.co.uk

Cambourne Catholic Church



Claudia writes for the Catholic community in general for the surrounding villages as there are not many Catholic Churches in the area. We are trying to reach out to villages around Cambourne to let other Catholics know there is a Catholic community here in Cambourne that welcomes everyone.

Saturday Evenings - 17:00 Mass (inc children's liturgy)

First Saturday of the month -16:20 Rosary

First Sunday of the Month -19:30 Praise and worship (Churches together)

For details of Adoration, confessions, sacramental preparations and social and youth events, check our Facebook page at www.facebook.com/CambourneCatholicChurch

Claudia Chetcuti Ganado

Milton MU

9th August is Mary Sumner Day and each year on that day MU members give thanks for their founder and celebrate the work of the Mothers' Union. This year Milton MU provided cakes at All Saints and sold cards and bookmarks. Nearly £100 was raised.

Thanks to everyone who supported our recent Strawberry Tea. The total raised for the MU Big Wheels Appeal was £223.

On 22nd September we will be holding a service of Holy Communion in the church. This will start at the usual meeting time of 7:30 pm, be celebrated by Revd. Dr. Simon Bradford and followed by refreshments.

On 6th October we are inviting members from Stapleford MU and other friends to our annual Sausage Sizzle. The cost is £5.

On 3rd November there will be a special meeting to mark the approach of 16 Days of Activism against Gender-based Violence.

On 17th November Ely Diocese is holding a Quiet Day at All Saints. It costs £6 and will be led by Revd. Anne Aldridge.

Advent Meditation is on 1st December. Take time out at the start of a busy season, be still and quiet and focus upon the meaning of Advent and Christmas.

For more details about the MU please contact Jackie Metcalfe: jacques0701@gmail.com

1863
de
Philibert Roustin

@milton post office

coffee
postino

Segafredo
ESPRESSO

The Post Office, 2 Coles Road, Milton, Cambridge, CB24 6BW
postinocoffee.com

Milton WI

In July, members enjoyed a visit to Cromer for their summer outing. Despite some light rain, it was a most pleasant day which included the end of the pier variety show.

Following the August break, September's meeting will be a celebration of the WI Centenary with a Bring and Share Supper. Our speaker for the evening will be Luanne Hill and her topic will be "What Colour and Style should I Wear?" A group of our members will be planning and taking the October meeting. Our Christmas celebration will be in November when Eliza McClelland will be entertaining us with an evening entitled "A Christmas Garland". Eliza is a vivacious and talented artist for a highly entertaining evening.

December will bring Milton WI's 90th Anniversary, and on the 8th, which is the exact date of the first meeting in 1925, we'll be having a grand party evening with a celebratory dinner. 16 year old Hilda Coulson originally broached the idea of a Milton WI, and 29 members attended the first meeting, the President being Helen Crafer, the Rector's wife.

In addition to monthly meetings, lunches, walks, games afternoons etc are being organised. New members are welcome; anyone can come along for a 'taster'. Contact our President Gill Offley (01223 293231) or Secretary Bridget Crow (01223 441755) or just come along. Meetings are on the third Tuesday each month at 7:30pm in the Church Hall.

Anne Newman

New Patchwork Club

Please come and join this friendly group, exchange your ideas and techniques. We are meeting at the Community Centre on

Monday 7th Sep/2nd Nov 13:30-15:30

Saturday 17th Oct/12th Dec 9:30-11:30

Price: £3.50 to cover the cost of the hall

More information at [facebook.com/NGRPatchwork](https://www.facebook.com/NGRPatchwork)

Alarms 4 Life for Landlords

Landlords of privately rented properties in Cambs can get free smoke and CO alarms at fire stations on 28th September. Under new safety laws expected in October, smoke alarms must be fitted on every floor of rented homes and carbon monoxide alarms in properties which burn solid fuels. For full details, go to www.cambsfire.gov.uk/firesafety/alarms4life.php

Swedish Massage



Contact Alex Campbell on 01223 862184
or 07746 122749
email: alex@alexercise.co.uk

Benefits include*:

- Relief from Stress, Anxiety and Tension
- Feelings of Deep Relaxation
- Improved Mood
- Improved Sleep
- A general sense of Wellbeing

Appointments available in Milton & Chesterton
Sports Centre, Gilbert Road, Cambridge

* Massage should not be used in place of conventional medical care. Always consult a GP or other Health professional for medical attention and advice.

Matthew Harney

General Building Work
Painting & Decorating

matthew.harney@btinternet.com

Tel: 01223 696508

Mob: 07962 398114



Photo Fun in Hall End!

Chris Thomas has been capturing all kinds of behaviour in Hall End and keeping a record on the Milton Community Facebook page at facebook.com/groups/MiltonVillage. Here are a few examples that Chris has uploaded in the past few months.

"The first of our apples from a heavily laden tree this year. The blackberry was a bonus."



"The Dancing Ghosts visit Hall End"



"A fond memory of my Mothers visiting Hall End"



"A glorious day in Milton, so what better place for Hall End to decamp to but the river!"



"Sick and tired of the grey wet weather, Chris escapes into sunshine at Hall End"



travel counsellors



With us...it's personal

MILTON VILLAGE TRAVEL AGENT MR ELI KARRAM

IATA and ATOL Member

I can book any holiday you may have seen elsewhere
Generally more choice and flexibility than available online
No limit on booking size Business travel UK and abroad
Everything financially protected, including flights only
27 years experience No obligation quotations

01223 855290 or 07963 841 679 any time

eli.karram@travelcounsellors.com
www.travelcounsellors.co.uk/eli.karram

2014 awards: Queen's Award for Enterprise

Sports Therapy Services

Sports Massage and Injury Rehabilitation



Don't put up
with the pain

SAVE 25% on your
first appointment

Additional offers available

call Lesley on **07940 110309**
or visit
www.sportstherapyservices.co.uk

Around the Pubs

Jolly Brewers

Tel: 01223 863895

Welcome to Corina and Lee: come in and meet the new team at the pub – sample some fantastic food, real ale and lager, watch all the major sporting events on TV, and if you have friends or family coming to stay look out for deals on our B&B rooms!

New for Sunday: food available from noon-8pm, with Sunday Roast available all day!

Sunday 27th September, Milton Country Park Autumn Festival: visit our Outside Bar where we will be selling Local Real Ale and Cider. The event includes street food, craft stalls, the annual produce show and lots of activities for families.

Book for the Festive Season: Christmas Day and Party menus available at the end of September.

Celebrations: the Pub is the ideal setting – contact Corina who will be happy to help!

For our regular offers please check the website: www.jollybrewersmilton.co.uk



HOWARD'S WAY School of Motoring

Manual & Automatic Cars

- Male and Female Driving Instructors
- Pass Plus Courses
- Intensive Courses
- Instructor Training
- Theory & Hazard Perception Confidence / Refresher
- Patient and Friendly
- Top Grade 6
- Motorway Courses

HOWARD'S WAY WINDOWS

- Window Cleaning by Request
- Milton, Waterbeach, Landbeach
- Pubs, Clubs and Offices

T: 01223 440767 M: 07753 617310
E: hcradock@btinternet.com www.h2way.com

Lee Beamiss Carpentry & Building

Tel 01223 440001

Mobile 07815 118339

web site www.leebeamiss.com

email enquiries@leebeamiss.com

All your re-upholstery needs
"COVERED"

S.PROCTOR UPHOLSTERY

Antique & Modern
Domestic & Commercial

Foam Cut To Size
D.I.Y. Sales

Family Trade Since The 1940's

TEL: 01223 440430

Email: sproctorupholstery@gmail.com

C2 BUTTON END IND EST, HARSTON, CAMBRIDGE, CB22 7GX

MILTON ANTIQUES AND COLLECTABLES

Offering a wide range of items
Clocks, China, Glass,
Brass, Copper, Silver plated articles
Costume jewellery, small pieces of furniture
Musical instruments and much, much, more

363 The Rowans Milton Cambridge

Tel No. 01223 860061

Mob: 07771620752

We also purchase good quality items.

White Horse

Tel: 01223 860327

Quiz night continues 9pm every Thursday. Free to play. Karaoke continues on the first Friday each month and on New Year's Eve: please arrive before 11pm to see New Year in.

We are taking Christmas bookings now: call in for a menu. Free bottle of wine for groups of six or more. Christmas Day we will be open for drinks only, from an earlier time of 11am to 2:30pm. Be lovely to see you all for a drink before you all go home to eat Christmas dinner. Boxing Day we open all day which is good for all those who like to meet up with friends or family for darts or a game of bar billiard or pool.

Please book for Sunday lunch times due to the ever increased numbers for Sunday Roasts. Food is served every lunch time and evening. Do come and try our chef's popular menu and his specials board. Sharp's Doombar has continued to be popular with five other ales to sample. We now have Aspoll Cider and our new addition on tap Somersby Cider.

Hope to see you all soon.

Alan, Ava and all the staff.

Lion & Lamb

Tel: 01223 860202

It's been great to see so many enjoying the garden and facilities here at the Lion & Lamb throughout the summer months. We hope the adults are enjoying the new chill out area and that everyone will love the full interior refurbishment we are half-way through!

Getting so much support from you all at the Summer Fayre has enabled us to make some donations back to the community...

- Donation to The Sycamores Pavilion Refurbishment Project
- Sponsorship for Milton Netball Club
- Ongoing sponsorship to Milton Football Club & Milton Cricket Club
- We are also in the process of making a donation to Milton Primary School

None of this would be possible without your support – so thank you! Our next fundraising *Quiz Night* will be on September 23rd to help local company Mathworks and their employees who are taking part in Byte Night 2015 to prevent youth homelessness and change the lives of vulnerable young people. All are welcome: £10 entry for teams of 4.

We will host our biggest ever *Macmillan Coffee Morning* on September 25th from 9am-2pm. Tea, coffee and delicious treats along with craft and gift stalls, tombola and raffle. Do come and help us raise money for this worthy cause.

Our annual *Hallowe'en Party* will take place on 30th October. Hog Roast & BBQ from 6pm. FREE children's party from 6.30-8pm in the Ghostly Pirates Lagoon with apple bobbing, piñata, cake decorating, sweet hunt and prizes for the best costumes, with the adults taking over from 9pm for the Fancy Dress Disco till the wee hours!

Ladies Dinner Club: September 8th with Trisha and her involvement with "Dementia Friends". October 6th with Trevor and a talk on Victoria v Elizabeth II. November 3rd with Bev Briggs – Personal Shopper. Christmas Wine Tasting on 1st December!

Psychic Suppers: September 9th, October 7th and November 25th.

Soul Night: September 18th and November 20th.

Christmas & New Years Eve menus and events can be found along with everything else on our website www.lion-lamb.co.uk

Sally & Lawrence



YOUR PROPERTY LOOKED AFTER AS IF IT WERE OUR OWN

**LETTINGS
LETTINGS
& LETTINGS,**

**IT'S ALL
WE DO,
7 DAYS A
WEEK**

Lettings and
Property Management
Specialists
Over 30 Years
Experience in the
Cambridge Lettings Market
24/7 contact

Direct line to Jo Clark
07976 463 944
Direct line to Nicola Webb
07896 352 160
Office 01223 967277
or 01954 214441

www.letsrentcambridge.co.uk
info@letsrentcambridge.co.uk



Lettings and
Property Management
Specialists



Landbeach and Milton Baptist Church

All are welcome to our small but friendly
fellowship. Further details from Maureen
Clark, tel 01954 250118

Sunday Services

10.30am
6pm

Family Service
Evening Worship
(4th Sunday @ Girton)

EMPLOYMENT OR FAMILY PROBLEMS?

- *Settlement Agreements*Unfair Dismissal*
 - *Discrimination*Breach of Contract*
 - *Divorce*Children Disputes*
 - *Financial Settlements*Separation Agreements*
- FREE INITIAL ADVICE**

**SMITH
MAY
SOLICITORS LLP**

Barnwell House, Barnwell Drive,
Cambridge CB5 8UU

BRIDGET GILTINANE – Family Lawyer

bridget.giltinane@smslaw.co.uk

JOANNE MAY – Employment Solicitor

joanne.may@smslaw.co.uk

CALL 01223 415372

FREE PARKING

www.smslaw.co.uk

Sunday services

**St. Paul's
MILTON**
Church at the heart of the community

Midweek groups & events

8am Holy Communion

A quiet, reflective way to
start the day.

10.30am Morning Worship with Children's Groups

Designed to cater for the
whole church, from ages
0-100+. Refreshments
served.

Evening Services
See website.

Little Rainbows Toddler
Group, Parents & Under
1s, Lunch Club, Mothers'
Union, Stitchers' Club,
Reading Group ...

For full details of all
these and more
please visit:

allsaintsmilton.org.uk

Wildlife Notes

Well summer seems to be over, unless, after this is printed, we suddenly get some decent weather. However, I doubt many migratory birds would be around to see it. I find that unless I keep a really close eye out, I never quite know when they've gone but just realise I've not seen them for a week or so. I've not seen swifts since the first week of August so they probably spend only around three months here. It was a surprise then at the very end of August to see one solitary individual over Midsummer Common. Also the common terns I'd seen from May to July all along the river weren't evident from some point in August. I'd love to know where the terns nest. I cycled to Waterbeach one evening and saw one catch a fish and then fly towards Milton. Could the ballast by the side of the railway resemble the pebbly shoreline they favour? Perhaps passing trains are less of a disturbance problem than people or dogs?

Swallows and housemartins were still abundant at the very end of August. I was surprised to see a grey wagtail at Tesco in June as normally it's only the pied variety that roost there. When I'd done my shopping, a young grey one was in a similar place by the edge of the goods road. Grey wagtails are normally found along waterways, not supermarket car parks - I see them regularly at Baits Bite Lock. Is the shrubbery along the road somewhere it is possible to nest? At least the herons are staying by the river where they should be; there are at least two between Baits Bite Lock and Chesterton, probably more at the moment.

A suggestion: now the nights are drawing in, remember to watch your speed and keep an eye out for hedgehogs from dusk as they really don't know the Green Cross Code. I still seem to have at least two individuals visiting the feeding station, both looking a very healthy size. At this time of year, it's the juveniles that are a real worry as they may not put enough weight on in time to safely survive hibernation which probably starts around the end of October, depending on the weather. Also, when using strimmers, please check first that there isn't a hedgehog asleep in the unwanted undergrowth.

Heather Coleman



**AG First Aid
Training**

Amelia Grant
First Aid Trainer Instructor

31 Old School Lane
Milton, Cambridge

ameliagrant@btinternet.com
<http://www.agfirstaidtraining.co.uk>
07795680733

*Luxury
therapies
at affordable
prices.*

No27
THERAPY ROOM
Tracy Wesson
Holistic Therapist

27 Fen Road · Milton · Call 01223 501534
WWW.NO27THERAPYROOM.CO.UK



20% OFF
all treatments
on your first
booking

Country Park Photo Blog

Local photographer Peter Higdon has been running a photography project at the Park. In his own words; "Having acquired a Labrador puppy last summer, I looked for a project in which I could mix exercising the dog with photography. The immediate trigger for the project was a discussion at Milton Photographic Club on the subject of finding colour in the local landscape in a drab February".



Examples of Peter's photographs from his blog

Peter has continued posting articles about the Park to his blog at a-year-in-the-park.blogspot.co.uk which has become an interesting read about the Park's changing seasons, as he compares what the camera sees with his memory of previous years.

CWA Events

Visit Farmer Tom's

Woodside Farm is the College of West Anglia's (CWA) commercial mixed farm in Milton. At regular intervals throughout the year, it is open on a Saturday for children to get up-close with the resident animals at Farmer Tom's. There is a 'viewing and handling' area which gives young people the opportunity to learn what happens on a working farm.

These events usually take place on a Saturday (11am-1pm) every few weeks with special open days for occasions such as Halloween and Christmas. More details at tinyurl.com/farmertoms

Equestrian Table Top Sale

CWA Cambridge Campus in Milton is hosting an Equestrian Table-Top Sale on Sunday 4th October 2015 10am-2pm.

It be held in the indoor arena at the College of West Anglia Cambridge Campus, Milton.

Sellers can book as many tables (£5 each) as they require at tinyurl.com/ettsale. Tables are provided and sellers may arrive at 9am to set up.

There is no admittance fee for buyers but we will have a donation bucket on the gate collecting for EACH- suggested donation £1.

PHYSIOMOBILE

Sarah Koets BSc MCSP MAACP

Registered with the Health and Care Professions Council

- Back and neck pain
- Sports injuries
- Post operative rehabilitation
- Arm, hand and shoulder problems



- Hip, knee and ankle pain
- Repetitive strain injuries
- Postural problems

Self referral accepted Recognised by all major insurers

Milton Surgery, 87 Coles Road, Milton, Cambridge, CB24 6BL

07790 512094 - www.physiomobile.co.uk

Also at: Fen Ditton and Girton



All villagers are invited to drinks and refreshments at

THE ANNUAL GENERAL MEETING OF MILTON COMMUNITY CENTRE

to see how this charity is managed
and how it plays a large part in the
village of Milton

TO BE HELD IN THE ANNEXE,
7:00PM ON WEDNESDAY 14TH
OCTOBER

The AGM will start at 7:30pm

Milton Tennis Club Annual General Meeting

Thursday 15th October, 7pm
Milton Community Centre, Coles Road
Join us for cheese, wine and a short quiz
before the AGM.

Sue Griffin, Secretary MTC

GJK Accountancy Limited

Accountancy services
annual and monthly accounts
bookkeeping
VAT and tax returns
Company formations

griffith.kinsman@ntlworld.com
30 The Rowans, Milton, CB24 6YU
Mobile 07710 503 148

Curry & Pizza

Selling delicious...

- ♦ Curry
- ♦ Southern
Fried Chicken
- ♦ Burgers
- ♦ Pizza



6B High Street, Milton, Tel: 861948

Dance, Movement, Storytelling and Musical Theatre for 4-6 years

Classes on Friday afternoons at Milton Primary

3.30pm 4-6 years CM/Musical Theatre
Come and dance to songs from the musicals this term!
Pay as you go options available.

We also run workshops in the holidays and Children's Birthday Parties!



Tel. 07837844759
michelle@creativemovements.co.uk
www.creativemovements.co.uk
www.facebook.com/cambridgecreativemovements

World Success for Karate Club

Milton once again has its own world karate champion.

Several years ago Alex Campbell triumphed in the veteran's sparring division at the world championships in Florida. In July this year he repeated his success by winning the Senior Kodanja traditional forms division at the WWTSDF world championships in Las Vegas.

The Milton Tang Soo Do Club also provided the silver medallist, Warren Langford, in the same division. Both trained under



6th Dan Master instructor Geoff Keerie who has run the club since 1986 and has guided 85 students to black belt. Alex and Warren, both 5th Dan Masters, run their own clubs locally and attend the Wednesday evening club in the community centre.

Another Milton resident and club member, 3rd Dan black belt Simon Clarke, also competed in Las Vegas. Well done to all for putting Milton on the World Martial Arts map.

Paul Capitan

Godden Auto Services Ltd

Benet Garage, Cambridge Road, Milton, Cambridge, CB24 6AW

**Servicing and repairs
to all makes of vehicles**

MOT TESTS WHILE YOU WAIT

By appointment only

www.goddenautoservices.co.uk

All major credit cards accepted

Tel: 01223 420380

Opening times: Monday to Friday 8.30am—5.30pm, Saturday 8.30am—12.30pm